

# National Mining Association

## Weekly Statistical Summary

---

February 17, 2017 Edition  
(Data for Week Ending February 11, 2017)

Prepared by  
National Mining Association



Suite 500 East, 101 Constitution Avenue, NW  
Washington, DC, 20001  
Phone (202) 463-2600  
Visit us at <http://www.nma.org>

# NMA Weekly Statistical Summary

Vol. 55, No. 6  
Dated 02/17/17

## PRODUCTION, CONSUMPTION & TRADE

	Week Ended			* Cumulative Jan 1 to		
	02/11/17	02/06/16	% Chng	02/11/17	02/11/16	% Chng
<b>EIA Coal Production (000 Tons):</b>						
Week Ended/Year to Date	16,488	13,530	21.9%	95,862	82,407	16.3%
52 Weeks Ended	762,117	864,323	-11.8%			
AAR Coal Rail Cars Loaded:	89,318	73,298	21.9%	519,291	446,897	16.2%
<b>DOC Coal Trade (000 Tons)</b>						
	December 16/15		% Chng	Jan - Dec 16/15		% Chng
<b>Exports:</b>						
Metallurgical	4,639	3,136	47.9%	40,930	46,007	-11.0%
Steam *	3,282	1,704	92.6%	18,918	27,591	-31.4%
Lignite	7	5	40.0%	71	63	12.7%
Anthracite	4	4	0.0%	401	336	19.3%
<b>Total</b>	7,932	4,849	63.6%	60,320	73,997	-18.5%
<b>Imports:</b>	652	969	-32.7%	9,850	11,318	-13.0%
	Week Ended			Cumulative Week 1 to		
	02/11/17	02/13/16	% Chng	02/11/17	02/13/16	% Chng
<b>EI Electric Total Output (Mil. Kwh)</b>	74,849	79,816	-6.2%	463,098	474,571	-2.4%
<b>EI Coal Region Output (Mil. Kwh)</b>	63,545	69,194	-8.2%	393,584	408,758	-3.7%
<b>AISI Raw Steel Output (000 Tons)</b>	1,738	1,709	1.7%	10,300	9,803	5.1%

## EIA (SNL ENERGY) AVERAGE COAL & NATURAL GAS SPOT PRICES Dollars Per Short Ton

Average Coal Spot Prices (\$/Short Ton)	Week Ending			Natural Gas Spot Prices (\$/MMBtu)	
	02/10/17	02/03/17	% Chng	Wed.	02/08/17
Central App, 12,500 Btu, 1.2 SO <sub>2</sub>	\$50.05	\$50.05	0.0%	Henry Hub	3.05
Northern App, 13,000 Btu, < 3.0 SO <sub>2</sub>	45.80	45.80	0.0%	New York	4.50
Illinois Basin, 11,800, 5.0 SO <sub>2</sub>	31.75	31.75	0.0%	Chicago	3.02
Powder River Basin, 8,800 Btu 0.8 SO <sub>2</sub>	11.80	11.80	0.0%	Cal.Comp.Avg.	3.02
Uinta Basin, 11,700 Btu, 0.8 SO <sub>2</sub>	41.15	41.15	0.0%		

Coal exports and Imports are "as reported" (not revised); \*Steam excludes lignite & anthracite. All data in this report are preliminary and subject to revision.

Sources: Energy Information Administration; Edison Electric Institute; American Iron & Steel Institute; Association of American Railroads; Dept. of Commerce; SNL Energy; NGI's Daily Gas Price Index



**NMA**  
THE AMERICAN RESOURCE

National Mining Association Web Site: [http:// www.nma.org](http://www.nma.org)

<b>EIA Estimated Weekly U.S. Coal Production Overview</b>									
	<b>Week Ended</b>			<b>Year to Date</b>			<b>52 Weeks Ended</b>		
<b>Coal-Producing Region &amp; State</b> <b>(thousand short tons)</b>	<b>2/11/2017</b> <b>(week 6)</b>	<b>2/4/2017</b> <b>(week 5)</b>	<b>2/6/2016</b> <b>(week 6)</b>	<b>2/11/2017</b>	<b>2/11/2016</b>	<b>% Change</b>	<b>2/11/2017</b>	<b>2/6/2016</b>	<b>% Change</b>
Alabama	187	196	191	1,100	1,165	-5.6	8,911	12,440	-28.4
Alaska	28	30	24	163	147	10.3	1,103	1,191	-7.4
Arizona	119	125	104	697	636	9.6	5,577	6,596	-15.4
Arkansas	1	1	1	6	5	12.5	45	87	-48.3
Coloradc	211	211	194	1,238	1,182	4.7	11,613	17,618	-34.1
Illinois	1,029	1,094	885	6,043	5,392	12.1	46,462	53,598	-13.3
Indiana	676	707	565	3,973	3,440	15.5	30,314	33,183	-8.6
Kansas	3	3	2	16	13	22.2	73	187	-61.0
<b>Kentucky Total</b>	<b>944</b>	<b>986</b>	<b>887</b>	<b>5,484</b>	<b>5,404</b>	<b>1.5</b>	<b>44,533</b>	<b>58,801</b>	<b>-24.3</b>
Eastern (KY)	351	364	358	2,027	2,183	-7.1	17,397	26,601	-34.6
Western (KY)	593	622	529	3,456	3,221	7.3	27,135	32,199	-15.7
Louisiana	63	64	51	366	313	17.2	2,945	3,381	-12.9
Maryland	32	33	28	183	171	6.7	1,520	1,828	-16.8
Mississippi	67	73	60	395	367	7.7	2,994	3,125	-4.2
Missouri	5	5	3	32	20	60.3	222	138	60.9
Montana	661	686	581	3,809	3,538	7.7	32,580	40,198	-19.0
New Mexicc	326	303	336	1,852	2,045	-9.5	14,786	19,782	-25.3
North Dakota	741	773	564	4,344	3,433	26.5	30,681	28,580	7.4
Ohio	336	358	305	1,969	1,855	6.1	14,514	16,496	-12.0
Oklahoma	16	17	13	93	80	17.4	689	762	-9.6
<b>Pennsylvania Tota</b>	<b>1,042</b>	<b>1,073</b>	<b>808</b>	<b>6,142</b>	<b>4,921</b>	<b>24.8</b>	<b>46,981</b>	<b>49,232</b>	<b>-4.6</b>
Anthracite (PA)	41	43	34	238	205	15.9	1,844	2,112	-12.7
Bituminous (PA)	1,001	1,030	774	5,903	4,716	25.2	45,138	47,120	-4.2
Tennessee	19	21	18	111	110	0.5	799	904	-11.6
Texas	1,111	1,175	775	6,519	4,723	38.0	44,212	36,587	20.8
Utah	355	369	263	2,094	1,602	30.8	14,764	14,252	3.6
Virginia	332	344	250	1,956	1,520	28.6	14,249	13,993	1.8
<b>West Virginia Total</b>	<b>1,868</b>	<b>1,952</b>	<b>1,506</b>	<b>10,922</b>	<b>9,173</b>	<b>19.1</b>	<b>84,060</b>	<b>91,745</b>	<b>-8.4</b>
Northern (WV)	1,082	1,117	804	6,307	4,899	28.7	46,989	46,247	1.6
Southern (WV)	786	835	702	4,615	4,274	8.0	37,071	45,497	-18.5
Wyoming	6,315	6,427	5,114	36,359	31,151	16.7	307,491	359,620	-14.5
<b>Appalachian Tota</b>	<b>4,168</b>	<b>4,341</b>	<b>3,464</b>	<b>24,408</b>	<b>21,098</b>	<b>15.7</b>	<b>188,432</b>	<b>213,239</b>	<b>-11.6</b>
<b>Interior Total</b>	<b>3,564</b>	<b>3,760</b>	<b>2,885</b>	<b>20,899</b>	<b>17,573</b>	<b>18.9</b>	<b>155,091</b>	<b>163,247</b>	<b>-5.0</b>
<b>Western Total</b>	<b>8,757</b>	<b>8,923</b>	<b>7,181</b>	<b>50,555</b>	<b>43,735</b>	<b>15.6</b>	<b>418,594</b>	<b>487,837</b>	<b>-14.2</b>
<b>East of Mississippi River</b>	<b>6,533</b>	<b>6,837</b>	<b>5,503</b>	<b>38,275</b>	<b>33,519</b>	<b>14.2</b>	<b>295,337</b>	<b>335,344</b>	<b>-11.9</b>
<b>West of Mississippi River</b>	<b>9,955</b>	<b>10,188</b>	<b>8,027</b>	<b>57,587</b>	<b>48,888</b>	<b>17.8</b>	<b>466,781</b>	<b>528,978</b>	<b>-11.8</b>
Bituminous and Lignite	16,447	16,982	13,496	95,624	82,201	16.3	760,274	862,211	-11.8
Anthracite	41	43	34	238	205	15.9	1,844	2,112	-12.7
<b>U.S. Total</b>	<b>16,488</b>	<b>17,024</b>	<b>13,530</b>	<b>95,862</b>	<b>82,407</b>	<b>16.3</b>	<b>762,117</b>	<b>864,323</b>	<b>-11.8</b>
Railroad Cars Loaded	89,318	92,222	73,298	519,291	446,897	16.2	4,240,878	4,945,893	-14.3

Source: Energy Information Administration

Prepared by EEI's Business Information Group

**EEI**  
**WEEKLY ELECTRIC OUTPUT**

Volume 85 No. 6

**OUTPUT FOR WEEK ENDED - Feb 11, 2017**

**Feb 15, 2017**

The net available amount of electric energy distributed by the Total Electric Utility Industry+ for the week ended Saturday, Feb 11, 2017 was 74,849 gigawatthours (GWh), according to the Edison Electric Institute. This is equivalent to 155 on the weekly electric output index.

**WEEKLY ELECTRIC OUTPUT BY GEOGRAPHIC DIVISION**  
(48 CONTIGUOUS STATES)

	Week Ended February 11		52 Weeks Ended February 11	
	GWh Output	% Increase Over Corresponding Week of 2016	GWh Output	% Increase Over Corresponding Period of 2016
New England	2,482	-4.4	123,586	-1.6
Mid-Atlantic	8,383	-7.6	434,566	-1.2
Central Industrial	13,593	-7.7	673,806	0.5
West Central	6,220	-3.7	329,986	0.2
Southeast	18,414	-15.5	1,022,537	0.1
South Central	11,873	-1.5	715,407	1.3
Rocky Mountain	5,062	-0.2	275,800	-0.9
Pacific Northwest	3,710	16.7	155,150	1.4
Pacific Southwest	5,112	5.5	284,082	-0.3
Total United States	74,849	-6.2	4,014,920	0.1

**WEEKLY ELECTRIC OUTPUT IN PREVIOUS WEEKS--GWh**

Week Ended	2017	Week Ended	2016	% Inc. (17/16)	52 Weeks Ended	2017	% Inc. (17/16)
Jan 21	73,665	Jan 23	83,491	-11.8	Jan 21	4,020,133	0.2
Jan 28	75,253	Jan 30	77,913	-3.4	Jan 28	4,017,473	0.1
Feb 04	76,896	Feb 06	74,481	3.2	Feb 04	4,019,888	0.3
Feb 11	74,849	Feb 13	79,816	-6.2	Feb 11	4,014,920	0.1
Feb 11	<b>463,098</b>	Feb 13	<b>474,571</b>	<b>-2.4</b>	<b>YEAR TO DATE, FIRST 6 WEEKS</b>		

**WEEKLY ELECTRIC OUTPUT INDEX--TOTAL U.S.\***  
**SEASONALLY ADJUSTED 1982 = 100**

Week Ended	2017	Week Ended	2016	Week Ended	2015
Jan 21	161	Jan 23	193	Jan 24	177
Jan 28	167	Jan 30	176	Jan 31	176
Feb 04	160	Feb 06	167	Feb 07	183
Feb 11	155	Feb 13	183	Feb 14	179

\* Excludes Alaska and Hawaii.

+ Includes investor-owned companies, cooperatives and government-owned utilities.

Copyright © 2017 Edison Electric Institute. All rights reserved.

**EEl WEEKLY ELECTRIC OUTPUT BY GEOGRAPHIC DIVISION  
(48 CONTIGUOUS STATES)**

	Week Ended			NMA CUMULATIVE JANUARY WEEK ONE TO			52 Weeks Ended		
	11-Feb 2017 GWh Output	13-Feb 2016 GWh Output	% Increase Over Corresponding Week of 2016	11-Feb 2017 GWh Output	13-Feb 2016 GWh Output	% Increase Over Corresponding Week of 2016	11-Feb 2017 GWh Output	13-Feb 2016 GWh Output	% Increase Over Corresponding Week of 2016
<b>New England</b>	2,482	2,597	-4.4%	<b>14,624</b>	<b>15,010</b>	<b>-2.6%</b>	123,586	125,538	-1.6%
<b>Mid-Atlantic</b>	8,383	9,075	-7.6%	<b>50,793</b>	<b>52,309</b>	<b>-2.9%</b>	434,566	439,692	-1.2%
<b>Central Industrial</b>	13,593	14,729	-7.7%	<b>80,273</b>	<b>83,301</b>	<b>-3.6%</b>	673,806	670,539	0.5%
<b>West Central</b>	6,220	6,460	-3.7%	<b>38,586</b>	<b>39,355</b>	<b>-2.0%</b>	329,986	329,459	0.2%
<b>Southeast</b>	18,414	21,803	-15.5%	<b>115,715</b>	<b>125,141</b>	<b>-7.5%</b>	1,022,537	1,021,483	0.1%
<b>South Central</b>	11,873	12,054	-1.5%	<b>75,239</b>	<b>76,166</b>	<b>-1.2%</b>	715,407	706,529	1.3%
<b>Rocky Mountain</b>	5,062	5,073	-0.2%	<b>32,978</b>	<b>32,486</b>	<b>1.5%</b>	275,800	278,175	-0.9%
<b>Pacific Northwest</b>	3,710	3,180	16.7%	<b>23,911</b>	<b>20,986</b>	<b>13.9%</b>	155,150	152,960	1.4%
<b>Pacific Southwest</b>	5,112	4,845	5.5%	<b>30,979</b>	<b>29,816</b>	<b>3.9%</b>	284,082	284,989	-0.3%
<b>Total United States <sup>1/</sup></b>	<b>74,849</b>	<b>79,816</b>	<b>-6.2%</b>	<b>463,098</b>	<b>474,570</b>	<b>-2.4%</b>	4,014,920	4,009,364	0.1%
<b>Coal Regions Only <sup>2/</sup></b>	63,545	69,194	-8.2%	<b>393,584</b>	<b>408,758</b>	<b>-3.7%</b>	3,452,102	3,445,877	0.2%

Notes: EEI output data are an estimate of electricity load made available for distribution derived as weekly net generation + purchases from non-utilities + net imports - exports - sales for resale. It is not meant to be a measure of electricity generation for the U.S. EEI survey data represent the majority of national distribution (large utilities, large government power projects, some independent and large municipal power projects). The remaining segment of the industry (smaller producers) is estimated. Non-utility generation is captured via direct sales to utilities.

<sup>1/</sup> Excludes Alaska and Hawaii

<sup>2/</sup> Excludes New England and Pacific regions

SOURCE: Edison Electric Institute (EEI), *Weekly Electric Output Report*.

AMERICAN IRON AND STEEL INSTITUTE  
 25 Massachusetts Avenue, NW, Suite 800  
 Washington, D.C. 20001

February 13, 2017

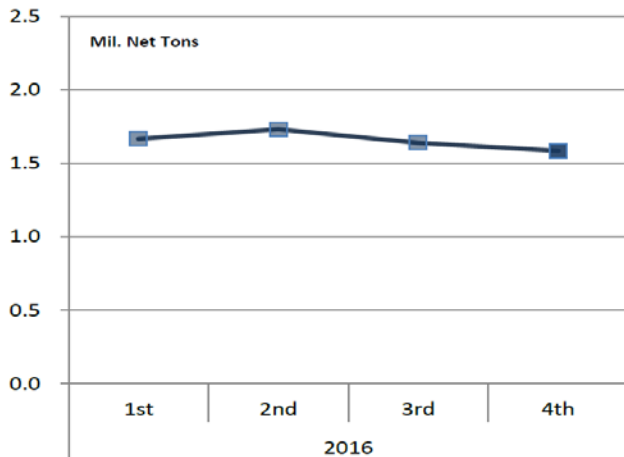
**ESTIMATED WEEKLY RAW STEEL \* PRODUCTION**

<u>Period</u>	<u>Thousand Net Tons</u>	<u>Percent Change from Previous Period</u>	<u>Percent Capability Utilization**</u>	<u>Production by District</u>		
				<u>Week Ending</u>		
				<u>Feb 11</u>	<u>Feb. 4</u>	
<b><u>Week Ending</u></b>				North East	212	216
				Great Lakes	662	648
February 11, 2017	1,738	0.9	73.4	Midwest	166	163
February 11, 2016	1,709	1.7	73.1	Southern	628	626
February 4, 2017	1,723	-0.7	72.7	Western	70	70
				<b>Total</b>	<b>1,738</b>	<b>1,723</b>
<b><u>Year-to-Date +</u></b>						
February 11, 2017	10,300	5.1	72.4			
February 11, 2016	9,803	-	70.8			

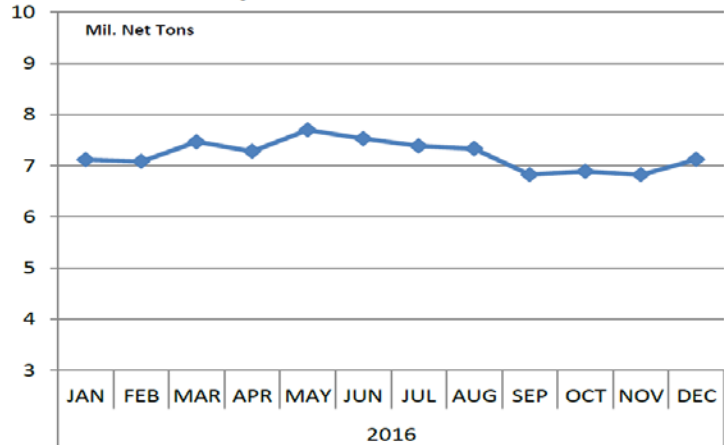
\*Raw steel production tonnage included in this report is estimated based on a sampling of steel producers (50% of domestic producers). Therefore, this report should be used primarily to assess production trends. The AISI production report "AIS 7," produced monthly and available by subscription, provides a more accurate summary of steel production based on data supplied by companies representing approximately 75% of U.S. production capacity plus includes revisions for previous months.

NOTE: Capability for the fourth quarter 2016 is approximately 31.2 million net tons vs. 31.4 million net tons for the same period last year, and 30.7 million tons for the third quarter of 2016.

**Average Weekly Raw Steel Production**



**Monthly Raw Steel Production**



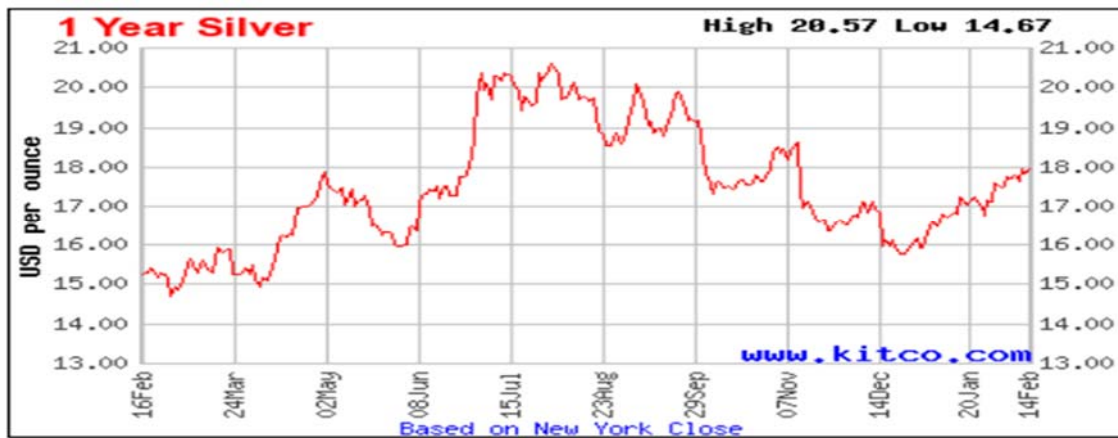
\*Steel in the first solid state after melting suitable for further processing or sale, including ingots, steel for castings and strand or pressure cast blooms, slabs or other product forms. \*\* Based on tonnage capability to produce raw steel for a sustained full order book.



Source: Kitco website - [www.kitco.com/connecting.html](http://www.kitco.com/connecting.html)

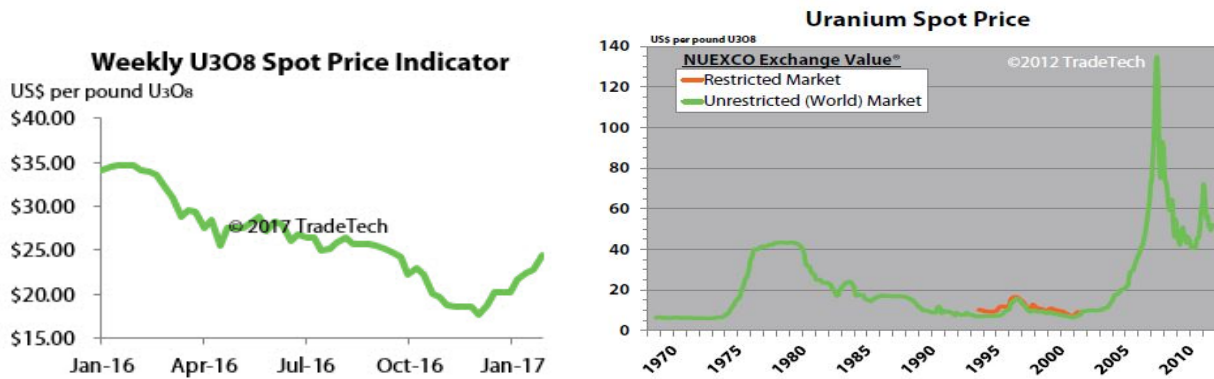


Source: Kitco website - [www.kitco.com/connecting.html](http://www.kitco.com/connecting.html)

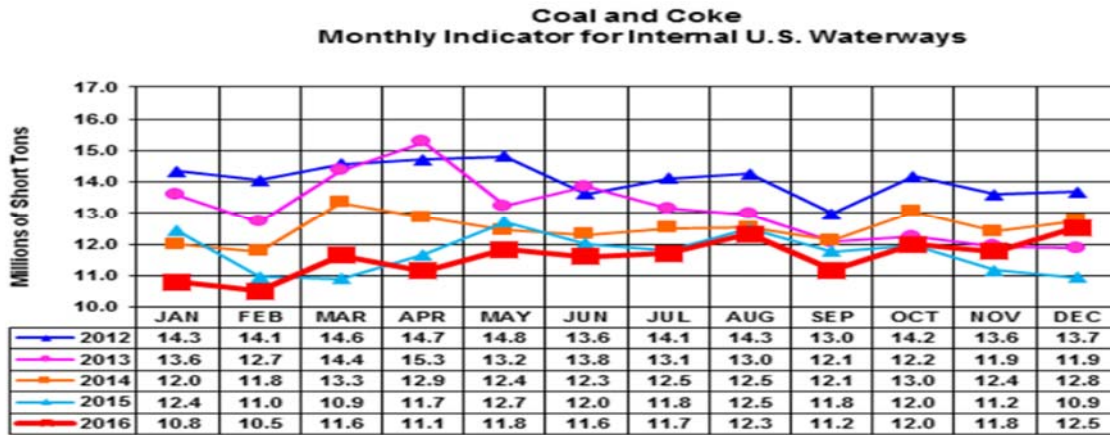


Source: Kitco website - [www.kitco.com/connecting.html](http://www.kitco.com/connecting.html)

### Trade Tech's Uranium Price Indicators



Source: Trade Tech, Uranium Info Website – [www.uranium.info](http://www.uranium.info)



Source: U.S. Army Corps of Engineers, Waterborne Commerce Statistics Center

### NYMEX Coal Futures Near-month Contract Final Settlement Price



Source: The New York Mercantile Exchange (NYMEX), Daily Energy Bulletin.

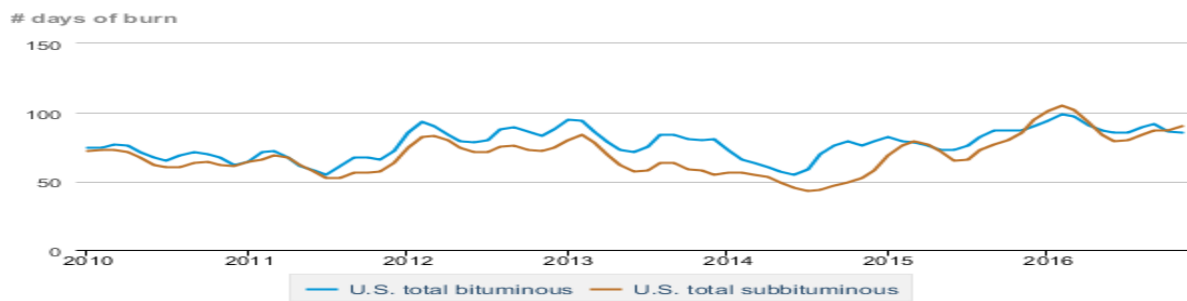
Source: Energy Information Administration, based on NYMEX and Daily Energy Bulletin data

### Average weekly coal commodity spot prices dollars per short ton

	Week ending					Week ago
	01/13/17	01/20/17	01/27/17	02/03/17	02/10/17	change
Central Appalachia 12,500 Btu, 1.2 SO <sub>2</sub>	\$46.50	\$50.00	\$50.00	\$50.05	\$50.05	\$0.00
Northern Appalachia 13,000 Btu, < 3.0 SO <sub>2</sub>	\$44.30	\$45.75	\$45.75	\$45.80	\$45.80	\$0.00
Illinois Basin 11,800 Btu, 5.0 SO <sub>2</sub>	\$35.00	\$35.00	\$35.00	\$31.75	\$31.75	\$0.00
Powder River Basin 8,800 Btu, 0.8 SO <sub>2</sub>	\$11.05	\$11.80	\$11.80	\$11.80	\$11.80	\$0.00
Uinta Basin 11,700 Btu, 0.8 SO <sub>2</sub>	\$41.10	\$41.10	\$41.10	\$41.15	\$41.15	\$0.00

Source: Energy Information Administration (with permission from SNL), *Coal News and Markets Report*

### Days of burn by non-lignite coal rank, January 2009 - November 2016



Source: U.S. Energy Information Administration

Source: Energy Information Administration, *Electricity Monthly Update Report*

Region	Temperature – heating & cooling degree days (week ending Feb 02)					
	HDD Current	HDD deviation from:		CDD Current	CDD deviation from:	
		normal	last year		normal	last year
New England	235	-39	44	0	0	0
Middle Atlantic	224	-37	20	0	0	0
E N Central	260	-31	52	0	0	0
W N Central	248	-57	37	0	0	0
South Atlantic	152	-26	13	2	-5	-4
E S Central	153	-28	35	0	-1	-1
W S Central	95	-35	19	2	-2	-4
Mountain	221	-1	15	0	-1	0
Pacific	105	-8	-6	0	-1	0
United States	191	-28	25	1	-1	-1

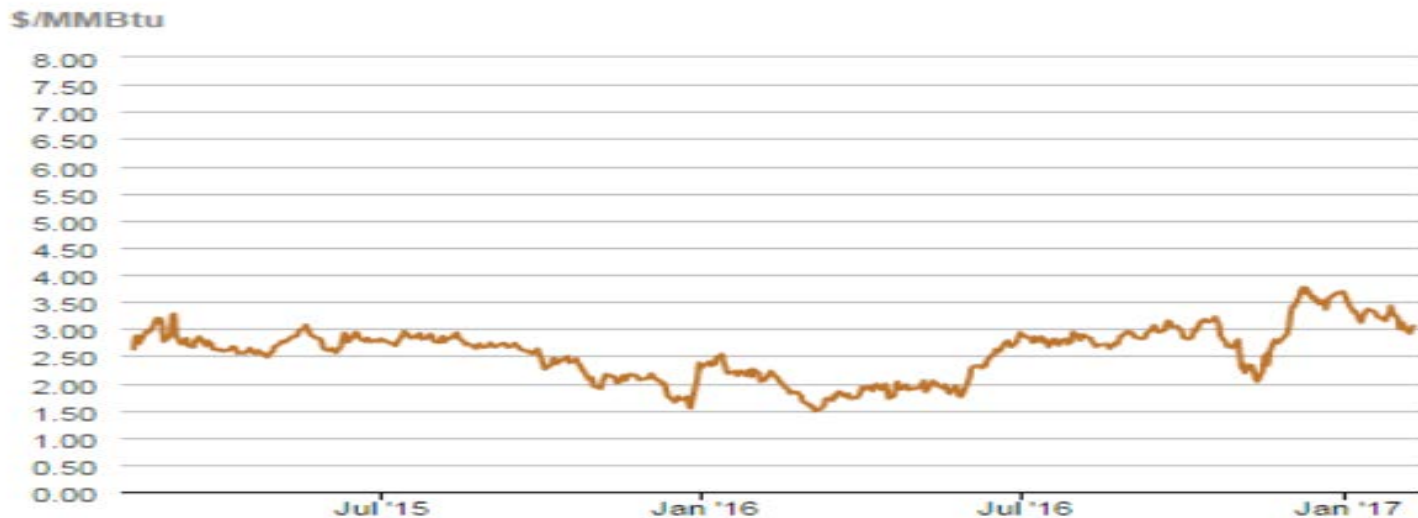
Note: HDD = heating degree day; CDD = cooling degree day  
Source: National Oceanic and Atmospheric Administration

Source: Energy Information Administration

USGS Production of Selected Mineral Commodities	2016 Year to Date - 3rd Quarter	2015 Year to Date - 3rd Quarter	Percent Change
Aluminum, secondary (000 Mt.)	673.0	556.0	21%
Cement (Mil. Mt.)	62.3	61.1	2%
Copper (000 Mt.)	1,080.0	1,040.0	4%
Gold (Mt.)	157.0	157.0	0%
Gypsum (Mil. Mt.)	12.4	11.3	10%
Iron Ore (Mil. Mt.)	29.3	32.8	-11%
Lead (000 Mt.)	260.0	277.0	-6%
Molybdenum (000 Mt.)	26.1	40.1	-35%
Phosphate rock (Mil. Mt.)	20.2	20.8	-3%
Sand & gravel, construction (Mil. Mt.)	732.0	703.0	4%
Silver (Mt.)	853.0	814.0	5%
Soda ash (Mil. Mt.)	8.8	8.7	1%
Stone, crushed (Mil. Mt.)	1,050.0	990.0	6%
Zinc (000 Mt.)	597.0	604.0	-1%

Source: U.S. Geological Survey, Mineral Industry Surveys. Percent change based on USGS rounded numbers. 2016 data are preliminary estimates.

**Natural gas spot prices (Henry Hub)**



eia Source: Natural Gas Intelligence

Source: Energy Information Administration, *Natural Gas Weekly Update*

**EIA Coal Stocks and Average Number of Days of Burn (Power Sector)**

Coal stocks and average number of days of burn for non-lignite coal by region (electric power sector)

Zone	Coal	November 2016		November 2015			October 2016		
		Stocks (1000 tons)	Days of Burn	Stocks (1000 tons)	Days of Burn	% Change of Stocks	Stocks (1000 tons)	Days of Burn	% Change of Stocks
Northeast	Bituminous	5,891	77	8,032	89	-26.6%	5,646	84	4.3%
	Subbituminous	153	63	708	147	-78.4%	136	69	11.9%
South	Bituminous	30,741	82	37,019	91	-17.0%	27,996	83	9.8%
	Subbituminous	6,491	75	7,584	84	-14.4%	6,039	73	7.5%
Midwest	Bituminous	17,154	90	17,550	82	-2.3%	16,909	94	1.4%
	Subbituminous	45,254	85	45,375	74	-0.3%	43,096	84	5.0%
West	Bituminous	6,099	93	5,785	78	5.4%	5,859	84	4.1%
	Subbituminous	34,098	102	39,044	104	-12.7%	31,312	95	8.9%
U.S. Total	Bituminous	59,885	85	68,386	87	-12.4%	56,410	86	6.2%
	Subbituminous	85,996	90	92,710	85	-7.2%	80,583	87	6.7%

Source: Energy Information Administration, *Electricity Monthly Update*

### EIA Working Natural Gas Underground Storage

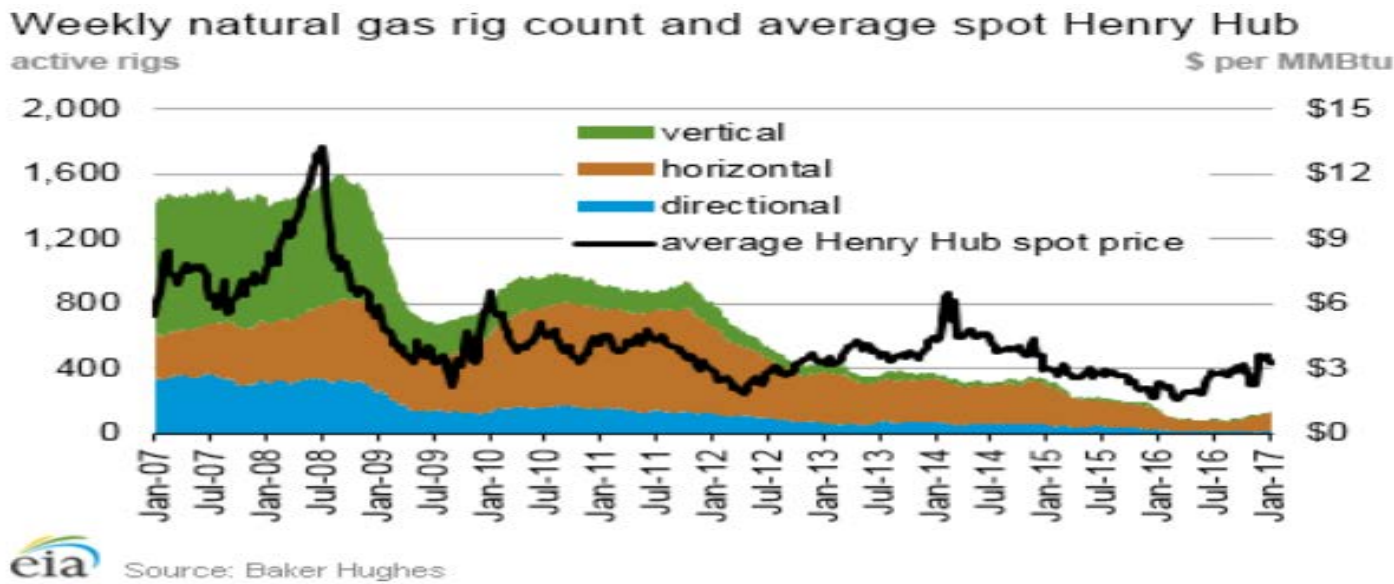
**Working gas in underground storage**

Region	Stocks billion cubic feet (Bcf)		
	2017-02-03	2017-01-27	change
East	520	569	-49
Midwest	685	730	-45
Mountain	155	164	-9
Pacific	208 C	221	-13
South Central	991	1,027	-36
<b>Total</b>	<b>2,559 C</b>	<b>2,711</b>	<b>-152</b>

Source: U.S. Energy Information Administration

Source: Energy Information Administration, *Natural Gas Weekly Update*

### EIA Natural Gas Rig Count and Price Trend



Source: Energy Information Administration, *Natural Gas Weekly Update*

### EIA Oil and Natural Gas Rig Productivity

Region	New-well oil production per rig barrels/day			New-well gas production per rig thousand cubic feet/day		
	February 2017	March 2017	change	February 2017	March 2017	change
Bakken	987	990	12	1,424	1,455	31
Eagle Ford	1,428	1,438	10	4,436	4,518	82
Haynesville	31	32	1	7,011	7,112	101
Marcellus	69	70	1	12,865	13,028	163
Niobrara	1,285	1,305	20	4,156	4,266	110
Permian	660	668	8	1,097	1,107	10
Utica	110	102	(8)	10,371	10,472	101
Rig-weighted average	699	713	14	3,500	3,509	9

Source: Energy Information Administration, *Drilling Productivity Report*