

National Mining Association

Weekly Statistical Summary

December 20, 2019 Edition
(Data for Week Ending December 14, 2019)

Prepared by
National Mining Association



Suite 500 East, 101 Constitution Avenue, NW
Washington, DC, 20001
Phone (202) 463-2600
Visit us at <http://www.nma.org>

NMA Weekly Statistical Summary

Vol. 57, No. 50
Dated 12/20/19

PRODUCTION, CONSUMPTION & TRADE

	Week Ended			* Cumulative Jan 1 to		
	12/14/19	12/15/18	% Chng	12/14/19	12/14/18	% Chng
EIA Coal Production (000 Tons):						
Week Ended/Year to Date	12,728	15,607	-18.4%	677,041	723,378	-6.4%
52 Weeks Ended	707,802	753,180	-6.0%			
AAR Coal Rail Cars Loaded:	72,320	91,218	-20.7%	3,848,033	4,222,558	-8.9%
Coal Production Month Ended - Nov.	November 19/18		% Chng	Jan - Nov 19/18		% Chng
	54,228	62,857	-13.7%	649,025	692,694	-6.3%
DOC Coal Trade (000 Tons)						
Exports:	October 19/18		% Chng	Jan - Oct 19/18		% Chng
Metallurgical	3,835	5,836	-34.3%	46,311	52,176	-11.2%
Steam Bit. *	2,581	4,816	-46.4%	32,293	45,444	-28.9%
Lignite	9	6	50.0%	78	71	9.9%
Anthracite	7	28	-75.0%	239	195	22.6%
Total	6,432	10,686	-39.8%	78,921	97,886	-19.4%
Imports:	742	304	144.1%	5,716	4,656	22.8%
	Week Ended			Cumulative Week 1 to		
	12/14/19	12/15/18	% Chng	12/14/19	12/15/18	% Chng
EI Electric Total Output (Mil. Kwh)	77,234	79,940	-3.4%	3,890,876	3,964,360	-1.9%
EI Coal Region Output (Mil. Kwh)	66,409	68,943	-3.7%	3,370,092	3,430,625	-1.8%
AISI Raw Steel Output (000 Tons)	1,844	1,861	-0.9%	92,584	90,916	1.8%

EIA (SNL ENERGY) AVERAGE COAL & NATURAL GAS SPOT PRICES Dollars Per Short Ton

Average Coal Spot Prices (\$/Short Ton)	Week Ending			Natural Gas Spot Prices (\$/MMBtu)	
	12/13/19	12/06/19	% Chng	Wed. 12/11/19	
Central App, 12,500 Btu, 1.2 SO ₂	\$61.55	\$61.90	-0.6%	Henry Hub	2.28
Northern App, 13,000 Btu, < 3.0 SO ₂	51.95	52.40	-0.9%	New York	2.84
Illinois Basin, 11,800, 5.0 SO ₂	36.30	36.45	-0.4%	Chicago	2.13
Powder River Basin, 8,800 Btu 0.8 SO ₂	11.75	11.80	-0.4%	Cal.Comp.Avg.	2.83
Uinta Basin, 11,700 Btu, 0.8 SO ₂	32.20	32.35	-0.5%		

Coal exports and Imports are "as reported" (not revised); *Steam excludes lignite & anthracite. All data in this report are preliminary and subject to revision. r/ revised.

Sources: EIA; Edison Electric Institute; American Iron & Steel Institute; Association of American Railroads; Dept. of Commerce; SNL Energy; NGI's Daily Gas Price Index



NMA
THE AMERICAN RESOURCE

National Mining Association Web Site: [http:// www.nma.org](http://www.nma.org)

EIA Estimated Weekly U.S. Coal Production Overview

Coal-Producing Region & State (thousand short tons)	Week Ended			Year to Date			52 Weeks Ended		
	12/14/2019 (week 50)	12/7/2019 (week 49)	12/15/2018 (week 50)	12/14/2019	12/14/2018	% Change	12/14/2019	12/15/2018	% Change
Alabama	266	254	297	14,011	14,160	-1.0	14,596	14,643	-0.3
Alaska	21	20	24	947	852	11.1	993	893	11.2
Arizona	.	.	130	3,843	6,276	-38.8	4,100	6,551	-37.4
Colorado	221	228	271	12,015	13,457	-10.7	12,548	14,029	-10.6
Illinois	891	846	998	45,885	47,385	-3.2	47,852	49,156	-2.7
Indiana	608	614	735	31,559	33,054	-4.5	33,008	34,248	-3.6
Kentucky Total	659	675	796	35,463	38,068	-6.8	37,032	39,600	-6.5
Eastern (KY)	253	253	333	13,666	16,382	-16.6	14,322	17,092	-16.2
Western (KY)	406	422	463	21,797	21,686	0.5	22,710	22,507	0.9
Louisiana	21	20	24	1,284	1,434	-10.4	1,331	1,507	-11.7
Maryland	27	28	28	1,397	1,238	12.8	1,453	1,300	11.8
Mississippi	45	44	54	2,609	2,826	-7.7	2,716	2,916	-6.9
Missouri	4	3	5	188	248	-24.0	199	257	-22.6
Montana	668	590	883	32,891	36,756	-10.5	34,630	38,265	-9.5
New Mexico	324	321	322	14,796	10,115	46.3	15,431	10,553	46.2
North Dakota	485	472	591	25,203	28,401	-11.3	26,368	29,553	-10.8
Ohio	157	147	199	7,844	8,575	-8.5	8,236	8,950	-8.0
Oklahoma	6	6	8	246	700	-64.8	261	722	-63.9
Pennsylvania Total	870	878	1,025	46,864	47,814	-2.0	48,885	49,691	-1.6
Anthracite (PA)	44	42	41	2,260	1,809	24.9	2,342	1,884	24.3
Bituminous (PA)	826	835	984	44,603	46,005	-3.0	46,543	47,807	-2.6
Tennessee	5	6	4	378	223	69.9	387	233	66.1
Texas	394	419	456	21,901	23,865	-8.2	22,799	25,339	-10.0
Utah	265	288	278	14,108	13,035	8.2	14,655	13,662	7.3
Virginia	222	223	263	11,979	12,458	-3.8	12,499	12,952	-3.5
West Virginia Total	1,652	1,642	1,892	89,310	91,535	-2.4	93,039	95,258	-2.3
Northern (WV)	852	872	964	45,150	44,091	2.4	47,049	45,988	2.3
Southern (WV)	800	770	928	44,160	47,445	-6.9	45,990	49,270	-6.7
Wyoming	4,917	5,017	6,324	262,320	290,902	-9.8	274,784	302,902	-9.3
Appalachian Total	3,452	3,431	4,042	185,450	192,385	-3.6	193,417	200,120	-3.3
Interior Total	2,375	2,374	2,742	125,470	131,198	-4.4	130,875	136,652	-4.2
Western Total	6,901	6,936	8,822	366,121	399,794	-8.4	383,510	416,407	-7.9
East of Mississippi River	5,403	5,357	6,292	287,301	297,336	-3.4	299,703	308,947	-3.0
West of Mississippi River	7,326	7,384	9,314	389,741	426,041	-8.5	408,099	444,233	-8.1
Bituminous and Lignite	12,685	12,699	15,565	674,781	721,569	-6.5	705,460	751,296	-6.1
Anthracite	44	42	41	2,260	1,809	24.9	2,342	1,884	24.3
U.S. Total	12,728	12,741	15,607	677,041	723,378	-6.4	707,802	753,180	-6.0
Railroad Cars Loaded	72,320	72,402	91,218	3,848,033	4,222,558	-8.9	4,030,162	4,395,383	-8.3

Source: Energy Information Administration



Weekly Electric Output

Volume 87 No. 50

OUTPUT FOR WEEK ENDED - Dec 14, 2019

Dec 18, 2019

The net available amount of electric energy distributed by the Total Electric Utility Industry* for the week ended Saturday, Dec 14, 2019 was **77,234** gigawatthours (GWh), according to the Edison Electric Institute. This is equivalent to **168** on the weekly electric output index.

WEEKLY ELECTRIC OUTPUT BY GEOGRAPHIC DIVISION

(48 CONTIGUOUS STATES)

	Week Ended December 14		52 Weeks Ended December 14	
	GWh Output	% Increase Over Corresponding Week of 2018	GWh Output	% Increase Over Corresponding Period of 2018
New England	2,383	-3.5	117,002	-4.7
Mid-Atlantic	8,383	-3.4	427,850	-3.1
Central Industrial	12,998	-2.4	660,721	-3.7
West Central	6,564	0.7	329,842	-2.6
Southeast	19,053	-7.9	1,028,368	-2.4
South Central	13,721	-3.0	768,157	0.5
Rocky Mountain	5,690	1.6	283,446	0.7
Pacific Northwest	3,489	-1.6	157,217	0.4
Pacific Southwest	4,953	-0.6	267,637	-3.5
Total United States	77,234	-3.4	4,040,240	-2.0

WEEKLY ELECTRIC OUTPUT IN PREVIOUS WEEKS--GWh

Week Ended	2019	Week Ended	2018	% Inc. (19/18)	52 Weeks Ended	2019	% Inc. (19/18)
Nov 23	71,732	Nov 24	72,136	-0.6	Nov 23	4,051,170	-1.6
Nov 30	70,815	Dec 01	76,038	-6.9	Nov 30	4,045,947	-1.9
Dec 07	76,146	Dec 08	79,147	-3.8	Dec 07	4,042,946	-2.0
Dec 14	77,234	Dec 15	79,940	-3.4	Dec 14	4,040,240	-2.0
Dec 14	3,890,876	Dec 15	3,964,360	-1.9	YEAR TO DATE, FIRST 50 WEEKS		

WEEKLY ELECTRIC OUTPUT INDEX--TOTAL U.S.*

SEASONALLY ADJUSTED 1982 = 100

Week Ended	2019	Week Ended	2018	Week Ended	2017
Nov 23	185	Nov 24	178	Nov 25	181
Nov 30	178	Dec 01	185	Dec 02	184
Dec 07	173	Dec 08	185	Dec 09	202
Dec 14	168	Dec 15	179	Dec 16	203

* Excludes Alaska and Hawaii.

+ Includes investor-owned companies, cooperatives and government-owned utilities.

Copyright © 2019 Edison Electric Institute. All rights reserved.

EEl WEEKLY ELECTRIC OUTPUT BY GEOGRAPHIC DIVISION
(48 CONTIGUOUS STATES)

	Week Ended			NMA CUMULATIVE JANUARY WEEK ONE TO			52 Weeks Ended		
	14-Dec 2019 GWh Output	15-Dec 2018 GWh Output	% Increase Over Corresponding Week of 2018	14-Dec 2019 GWh Output	15-Dec 2018 GWh Output	% Increase Over Corresponding Week of 2018	14-Dec 2019 GWh Output	15-Dec 2018 GWh Output	% Increase Over Corresponding Week of 2018
New England	2,383	2,469	-3.5%	112,362	117,569	-4.4%	117,002	122,764	-4.7%
Mid-Atlantic	8,383	8,674	-3.4%	411,580	424,125	-3.0%	427,850	441,535	-3.1%
Central Industrial	12,998	13,315	-2.4%	635,740	659,599	-3.6%	660,721	686,399	-3.7%
West Central	6,564	6,518	0.7%	317,434	325,490	-2.5%	329,842	338,702	-2.6%
Southeast	19,053	20,682	-7.9%	990,398	1,013,933	-2.3%	1,028,368	1,053,903	-2.4%
South Central	13,721	14,151	-3.0%	742,427	737,213	0.7%	768,157	764,239	0.5%
Rocky Mountain	5,690	5,603	1.6%	272,513	270,265	0.8%	283,446	281,354	0.7%
Pacific Northwest	3,489	3,545	-1.6%	150,329	149,056	0.9%	157,217	156,647	0.4%
Pacific Southwest	4,953	4,984	-0.6%	258,097	267,111	-3.4%	267,637	277,213	-3.5%
Total United States ^{1/}	<u>77,234</u>	<u>79,941</u>	-3.4%	<u>3,890,880</u>	<u>3,964,361</u>	<u>-1.9%</u>	4,040,240	4,122,756	-2.0%
Coal Regions Only ^{2/}	66,409	68,943	-3.7%	3,370,092	3,430,625	-1.8%	3,498,384	3,566,132	-1.9%

Notes: EEI output data are an estimate of electricity load made available for distribution derived as weekly net generation + purchases from non-utilities + net imports - exports - sales for resale. It is not meant to be a measure of electricity generation for the U.S. EEI survey data represent the majority of national distribution (large utilities, large government power projects, some independent and large municipal power projects). The remaining segment of the industry (smaller producers) is estimated. Non-utility generation is captured via direct sales to utilities.

^{1/} Excludes Alaska and Hawaii

^{2/} Excludes New England and Pacific regions

SOURCE: Edison Electric Institute (EEI), *Weekly Electric Output Report*.

AMERICAN IRON AND STEEL INSTITUTE
 25 Massachusetts Avenue, NW, Suite 800
 Washington, D.C. 20001

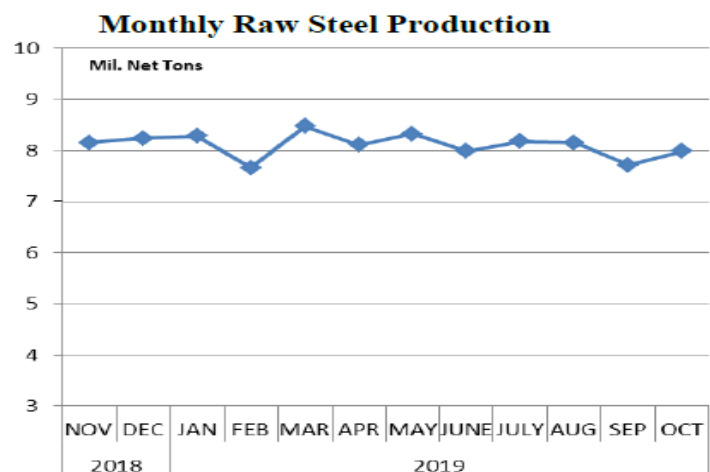
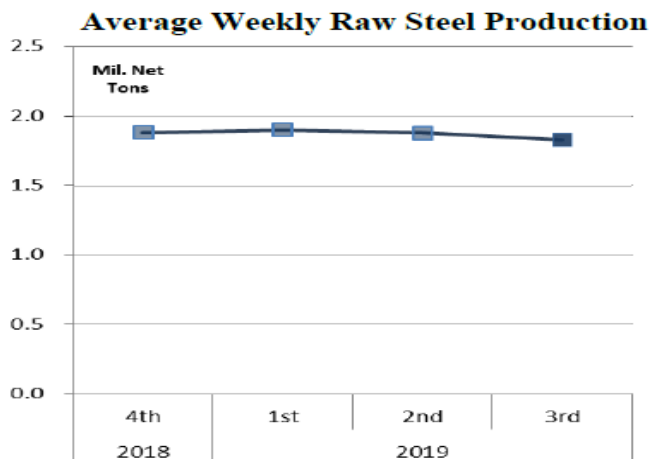
December 16, 2019

ESTIMATED WEEKLY RAW STEEL * PRODUCTION

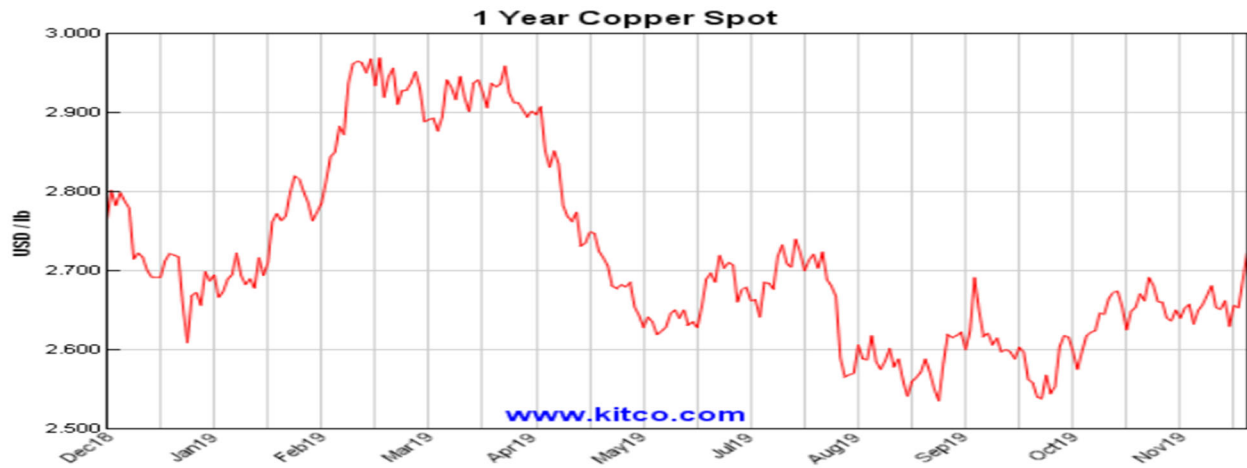
<u>Period</u>	<u>Thousand Net Tons</u>	<u>Percent Change from Previous Period</u>	<u>Percent Capability Utilization**</u>	<u>Production by District</u>		
				<u>Week Ending Dec 14</u>	<u>Week Ending Dec 7</u>	
<u>Week Ending</u>				North East	212	225
				Great Lakes	681	653
December 14, 2019	1,844	1.3	79.7	Midwest	192	193
December 14, 2018	1,861	-0.9	79.4	Southern	669	666
December 7, 2019	1,821	-0.8	78.7	Western	90	84
				Total	1,844	1,821
<u>Year-to-Date +</u>						
December 14, 2019	92,584	1.8	80.1			
December 14, 2018	90,916	-	78.2			

*Raw steel production tonnage included in this report is estimated based on a sampling of steel producers (50% of domestic producers). Therefore, this report should be used primarily to assess production trends. The AISI production report "AIS 7," produced monthly and available by subscription, provides a more accurate summary of steel production based on data supplied by companies representing approximately 75% of U.S. production capacity plus includes revisions for previous months.

NOTE: Capacity for the fourth quarter 2019 is approximately 30.4 million net tons vs. 30.8 million net tons for the same period last year, and 30.6 million tons for the third quarter of 2019.



*Steel in the first solid state after melting suitable for further processing or sale, including ingots, steel for castings and strand or pressure cast blooms, slabs or other product forms. ** Based on tonnage capability to produce raw steel for a sustained full order book.



Source: Kitco website - www.kitco.com/connecting.html



Source: Kitco website - www.kitco.com/connecting.html

U.S. Rail Traffic¹

Week 50, 2019 – Ended December 14, 2019

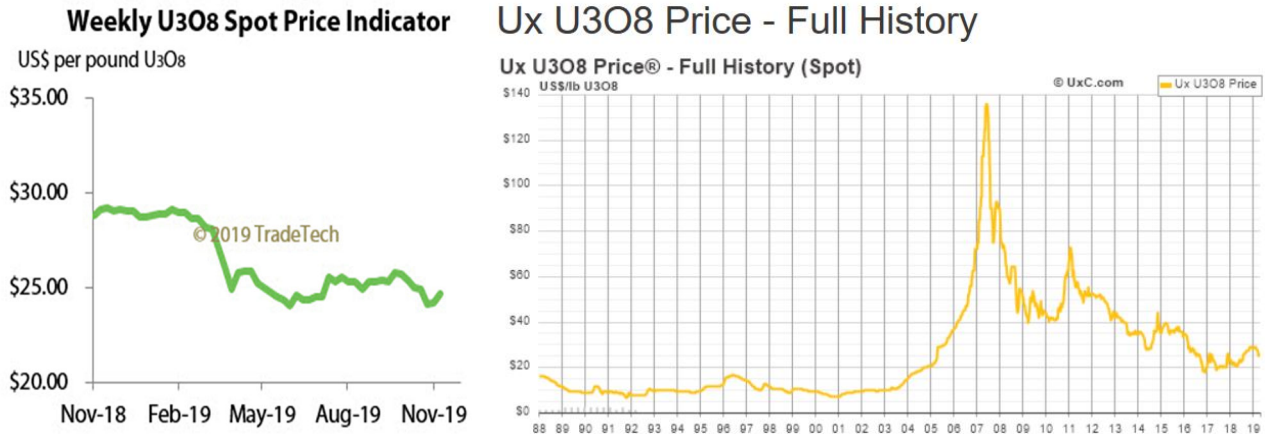
	This Week		Year-To-Date		
	Cars	vs 2018	Cumulative	Avg/wk ²	vs 2018
Total Carloads	243,290	-9.0%	12,535,766	250,715	-4.7%
Chemicals	30,908	-3.0%	1,600,191	32,004	-0.5%
Coal	72,320	-20.6%	3,867,685	77,354	-8.8%
Farm Products excl. Grain, and Food	15,454	-3.3%	778,054	15,561	-4.1%
Forest Products	9,684	-4.6%	490,503	9,810	-4.5%
Grain	20,709	-8.3%	1,078,859	21,577	-5.5%
Metallic Ores and Metals	22,633	-5.4%	1,087,912	21,758	-6.8%
Motor Vehicles and Parts	18,061	4.4%	806,498	16,130	-2.8%
Nonmetallic Minerals	29,443	-3.8%	1,708,937	34,179	-4.4%
Petroleum and Petroleum Products	13,643	0.7%	635,461	12,709	12.7%
Other	10,435	2.0%	481,666	9,633	-1.3%
Total Intermodal Units	277,299	-8.0%	13,287,891	265,758	-5.0%
Total Traffic	520,589	-8.5%	25,823,657	516,473	-4.8%

¹ Excludes U.S. operations of Canadian Pacific, CN and GMXT.

² Average per week figures may not sum to totals as a result of independent rounding.

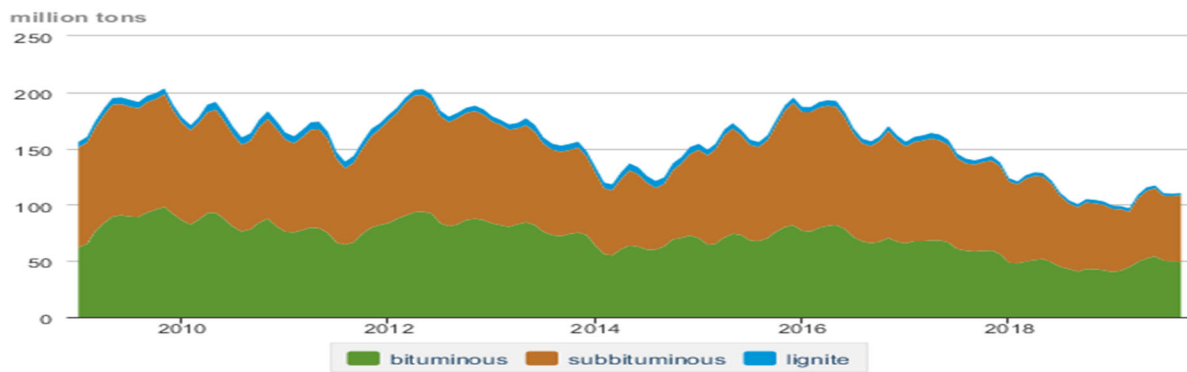
Source: AAR website - <https://www.aar.org/Pages/NEWS-and-EVENTS.aspx>

Trade Tech's and UX's Uranium Price Indicators



Sources: Trade Tech, Uranium Info Website – www.uranium.info ; Source: Ux Consulting Co., LLC – <http://www.uxc.com>

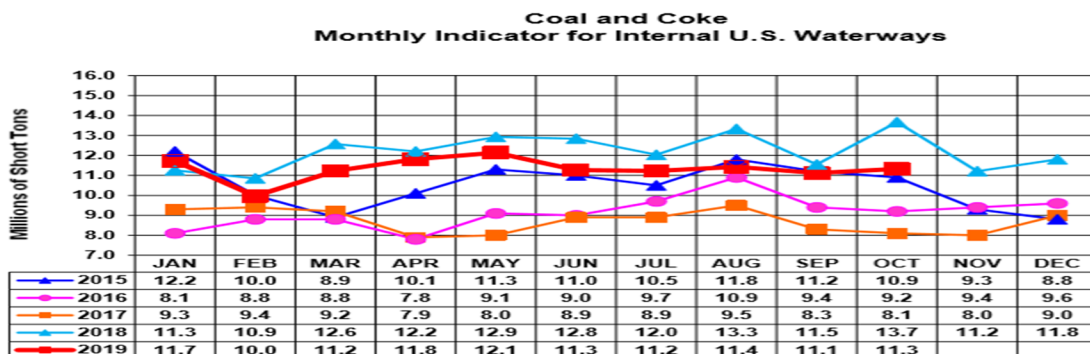
Coal stocks by type, January 2009 - September 2019



Source: U.S. Energy Information Administration

Source: Energy Information Administration, Electric Monthly Update

Source: Energy Information Administration, Electric Monthly Update



For the Internal U.S. Waterway Monthly Indicators, estimates for the most recent month are based on lock performance management data. The estimates will be superseded by actual data as it becomes available.

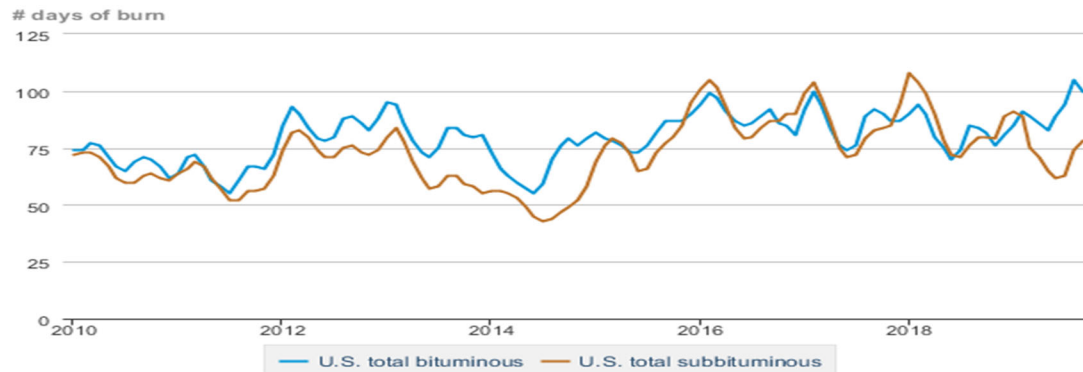
Source: Waterborne Commerce Statistics Center

Average weekly coal commodity spot prices dollars per short ton

	Week ending					Week ago
	11/15/19	11/22/19	11/29/19	12/06/19	12/13/19	change
Central Appalachia 12,500 Btu, 1.2 SO ₂	\$65.40	\$61.90	\$61.90	\$61.90	\$61.55	\$-0.35
Northern Appalachia 13,000 Btu, < 3.0 SO ₂	\$57.90	\$52.40	\$52.40	\$52.40	\$51.95	\$-0.45
Illinois Basin 11,800 Btu, 5.0 SO ₂	\$38.95	\$36.45	\$36.45	\$36.45	\$36.30	\$-0.15
Powder River Basin 8,800 Btu, 0.8 SO ₂	\$12.15	\$11.80	\$11.80	\$11.80	\$11.75	\$-0.05
Uinta Basin 11,700 Btu, 0.8 SO ₂	\$34.10	\$32.35	\$32.35	\$32.35	\$32.20	\$-0.15

Source: Energy Information Administration (with permission from SNL), *Coal Market Report*

Days of burn by non-lignite coal rank, January 2009 - September 2019



Source: U.S. Energy Information Administration

Source: Energy Information Administration, *Electricity Monthly Update Report*

Temperature – heating & cooling degree days (week ending Dec 05)

Region	HDD Current	HDD deviation from:		CDD Current	CDD deviation from:	
		normal	last year		normal	last year
New England	240	36	41	0	0	0
Middle Atlantic	219	25	28	0	0	0
E N Central	205	-18	-7	0	0	0
W N Central	216	-33	-23	0	0	0
South Atlantic	131	-4	3	6	-4	-6
E S Central	129	-10	11	0	-1	-1
W S Central	73	-28	-8	7	4	-2
Mountain	204	-5	-11	0	0	0
Pacific	125	16	5	0	-1	0
United States	171	-3	2	2	0	-1

Note: HDD = heating degree day; CDD = cooling degree day

Source: National Oceanic and Atmospheric Administration

Source: Energy Information Administration, *Natural Gas Weekly Update*.

USGS Production of Selected Mineral Commodities	2019 Year to Date - 2nd Quarter	2018 Year to Date - 2nd Quarter	Percent Change
Aluminum, secondary (000 Mt.)	419.0	417.0	0%
Cement (Mil. Mt.)	40.3	40.5	0%
Copper (000 Mt.)	604.0	599.0	1%
Gold (Mt.)	104.0	110.0	-5%
Gypsum (Mil. Mt.)	8.7	8.4	4%
Iron Ore (Mil. Mt.)	23.3	24.0	-3%
Lead (000 Mt.)	136.0	129.0	5%
Molybdenum (000 Mt.)	22.0	20.8	6%
Phosphate rock (Mil. Mt.)	11.4	13.6	-16%
Sand & gravel, construction (Mil. Mt.)	441.0	432.0	2%
Silver (Mt.)	519.0	446.0	16%
Soda ash (Mil. Mt.)	5.8	5.8	0%
Stone, crushed (Mil. Mt.)	687.0	639.0	8%
Zinc (000 Mt.)	374.0	384.0	-3%

Source: U.S. Geological Survey, Mineral Industry Surveys. Percent change based on USGS rounded numbers. 2019 data are preliminary estimates. W - withheld, N/A - not available

Natural gas spot prices (Henry Hub)

dollars per million British thermal units



eia Source: Natural Gas Intelligence

Source: Energy Information Administration, *Natural Gas Weekly*.

EIA Coal Stocks and Average Number of Days of Burn (Power Sector)

Coal stocks and average number of days of burn for non-lignite coal by region (electric power sector)

Zone	Coal	September 2019		September 2018		% Change of Stocks	August 2019		% Change of Stocks
		Stocks (1000 tons)	Days of Burn	Stocks (1000 tons)	Days of Burn		Stocks (1000 tons)	Days of Burn	
Northeast	Bituminous	3,897	191	2,829	84	37.8%	3,831	189	1.7%
	Subbituminous	162	159	163	139	-0.7%	162	181	0.0%
South	Bituminous	21,291	104	18,000	86	18.3%	22,765	112	-6.5%
	Subbituminous	4,676	61	4,669	59	0.2%	4,455	54	5.0%
Midwest	Bituminous	10,286	86	8,876	78	15.9%	10,180	87	1.0%
	Subbituminous	22,172	92	26,427	88	-16.1%	21,385	87	3.7%
West	Bituminous	3,408	73	4,301	92	-20.7%	3,888	84	-12.3%
	Subbituminous	20,078	72	20,238	77	-0.8%	20,266	68	-0.9%
U.S. Total	Bituminous	38,881	100	34,006	84	14.3%	40,664	105	-4.4%
	Subbituminous	47,088	78	51,497	80	-8.6%	46,268	74	1.8%

Source: U.S. Energy Information Administration

Source: Energy Information Administration, *Electricity Monthly Update*

EIA Working Natural Gas Underground Storage

Working gas in underground storage

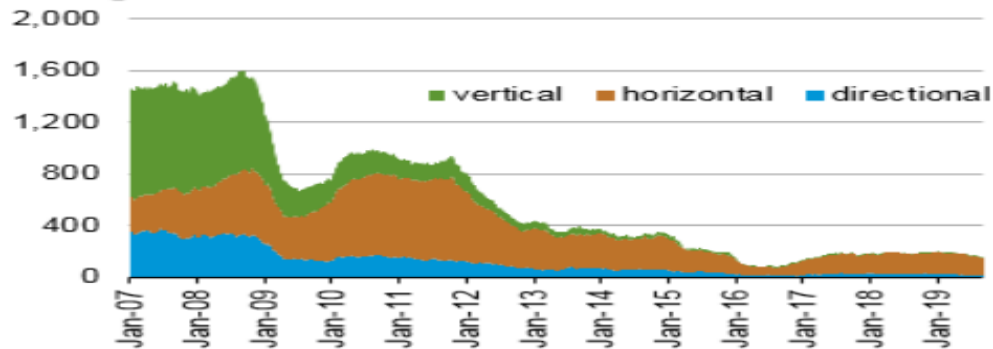
Region	Stocks billion cubic feet (Bcf)		
	2019-12-06	2019-11-29	change
East	867	891	-24
Midwest	1,013	1,040	-27
Mountain	193	200	-7
Pacific	276	286	-10
South Central	1,168	1,174	-6
Total	3,518	3,591	-73

Source: Form EIA-912, *Weekly Underground Natural Gas Storage Report*

Source: Energy Information Administration, *Natural Gas Weekly Update*

EIA Natural Gas Rig Count

Weekly natural gas rig count active rigs



Source: Baker Hughes Inc.

Source: Energy Information Administration, *Natural Gas Weekly Update*

EIA Oil and Natural Gas Rig Productivity

Region	New-well oil production per rig barrels/day			New-well gas production per rig thousand cubic feet/day		
	December 2019	January 2020	change	December 2019	January 2020	change
Anadarko	606	625	19	4,141	4,230	89
Appalachia	161	164	3	18,662	18,740	78
Bakken	1,515	1,553	38	2,235	2,282	47
Eagle Ford	1,432	1,449	17	4,920	4,929	9
Haynesville	27	27	-	10,322	10,366	44
Niobrara	1,210	1,214	4	4,224	4,229	5
Permian	796	798	2	1,558	1,563	5
Rig-weighted average	821	833	12	4,186	4,092	(94)

Source: Energy Information Administration, *Drilling Productivity Report*