
NATIONAL MINING ASSOCIATION

Weekly Statistical Summary

September 11, 2020 Edition
(Data for Week Ending September 5, 2020)

Prepared by
National Mining Association



101 Constitution Avenue, NW, Suite 500 East
Washington, DC, 20001
Phone (202) 463-2600
<http://www.nma.org>

NMA Weekly Statistical Summary

Vol. 58, No. 36
Dated 09/11/20

PRODUCTION, CONSUMPTION & TRADE

	Week Ended			* Cumulative Jan 1 to		
	09/05/20	09/07/19	% Chng	09/05/20	09/05/19	% Chng
EIA Coal Production (000 Tons):						
Week Ended/Year to Date	10,686	13,457	-20.6%	362,526	492,049	-26.3%
52 Weeks Ended	572,916	735,103	-22.1%			
AAR Coal Rail Cars Loaded:	60,842	79,446	-23.4%	2,023,642	2,778,479	-27.2%
DOC Coal Trade (000 Tons)						
Exports:						
	July 20/19		% Chng	Jan - July 20/19		% Chng
Metallurgical	3,724	3,656	1.9%	24,397	32,661	-25.3%
Steam Bit. *	1,581	2,761	-42.7%	15,551	24,144	-35.6%
Lignite	7	8	-12.5%	54	55	-1.8%
Anthracite	52	70	-25.7%	146	191	-23.6%
Total	5,364	6,495	-17.4%	40,148	57,051	-29.6%
Imports:						
	473	511	-7.4%	2,959	3,804	-22.2%
EI Electric Total Output (Mil. Kwh)						
	Week Ended		% Chng	Cumulative Week 1 to		% Chng
	09/05/20	09/07/19	% Chng	09/05/20	09/07/19	% Chng
EI Electric Total Output (Mil. Kwh)	84,215	83,846	0.4%	2,769,275	2,844,821	-2.7%
EI Coal Region Output (Mil. Kwh)	73,348	72,482	1.2%	2,397,476	2,465,755	-2.8%
AISI Raw Steel Output (000 Tons)	1,428	1,813	-21.2%	53,269	66,730	-20.2%

EIA (S&P Global) AVERAGE COAL & NATURAL GAS SPOT PRICES Dollars Per Short Ton

Average Coal Spot Prices (\$/Short Ton)	Week Ending			Natural Gas Spot Prices (\$/MMBtu)	
	09/04/20	08/28/20	% Chng	Wed.	09/02/20
Central App, 12,500 Btu, 1.2 SO ₂	\$59.50	\$55.50	7.2%	Henry Hub	2.19
Northern App, 13,000 Btu, < 3.0 SO ₂	42.45	42.45	0.0%	New York	1.76
Illinois Basin, 11,800, 5.0 SO ₂	34.05	34.05	0.0%	Chicago	2.17
Powder River Basin, 8,800 Btu 0.8 SO ₂	11.70	11.60	0.9%	Cal.Comp.Avg.	3.05
Uinta Basin, 11,700 Btu, 0.8 SO ₂	29.10	29.10	0.0%		

Coal exports and Imports are "as reported" (not revised); *Steam excludes lignite & anthracite. All data in this report are preliminary and subject to revision. r/ revised.

Sources: EIA; Edison Electric Institute; American Iron & Steel Institute; Association of American Railroads; Dept. of Commerce; S&P Global; NGI's Daily Gas Price Index



NMA
THE AMERICAN RESOURCE

National Mining Association Web Site: [http:// www.nma.org](http://www.nma.org)

EIA Estimated Weekly U.S. Coal Production Overview									
Coal-Producing Region & State (thousand short tons)	Week Ended			Year to Date			52 Weeks Ended		
	9/5/2020 (week 36)	8/29/2020 (week 35)	9/7/2019 (week 36)	9/5/2020	9/5/2019	% Change	9/5/2020	9/7/2019	% Change
Alabama	215	207	252	8,323	10,219	-18.6	12,156	14,824	-18.0
Alaska	17	17	17	670	669	0.2	971	1,010	-3.9
Arizona	.	.	43	.	3,686	-100.0	144	5,720	-97.5
Colorado	191	195	246	6,684	9,105	-26.6	10,377	13,382	-22.5
Illinois	609	617	859	21,978	33,609	-34.6	34,017	49,138	-30.8
Indiana	414	437	565	14,220	22,460	-36.7	23,157	33,710	-31.3
Kentucky Total	468	514	659	16,008	26,059	-38.6	25,870	38,395	-32.6
Eastern (KY)	166	180	253	5,668	10,184	-44.3	9,282	15,354	-39.5
Western (KY)	302	335	406	10,341	15,875	-34.9	16,588	23,040	-28.0
Louisiana	26	30	35	782	1,083	-27.8	1,227	1,507	-18.6
Maryland	23	25	27	821	1,020	-19.5	1,264	1,445	-12.5
Mississippi	49	44	54	1,739	1,908	-8.9	2,513	2,797	-10.2
Missouri	3	3	4	106	135	-21.8	159	217	-26.7
Montana	590	652	785	18,984	23,275	-18.4	29,952	36,683	-18.3
New Mexico	208	232	254	7,332	10,216	-28.2	11,578	14,998	-22.8
North Dakota	476	453	507	17,363	18,153	-4.4	26,061	27,488	-5.2
Ohio	93	100	135	2,845	5,652	-49.7	4,934	8,719	-43.4
Oklahoma	3	3	4	26	164	-84.4	87	317	-72.6
Pennsylvania Total	737	788	845	24,632	34,490	-28.6	39,977	50,180	-20.3
Anthracite (PA)	52	58	47	1,580	1,669	-5.3	2,509	2,306	8.8
Bituminous (PA)	685	730	798	23,051	32,821	-29.8	37,468	47,874	-21.7
Tennessee	10	10	11	182	285	-36.2	329	358	-8.1
Texas	367	377	475	12,297	16,225	-24.2	19,242	23,572	-18.4
Utah	215	205	234	8,532	10,381	-17.8	12,489	14,709	-15.1
Virginia	198	212	246	6,934	8,745	-20.7	10,587	12,839	-17.5
West Virginia Total	1,354	1,417	1,709	45,890	66,083	-30.6	72,741	95,564	-23.9
Northern (WV)	688	710	831	23,622	33,033	-28.5	37,428	47,870	-21.8
Southern (WV)	666	707	878	22,268	33,050	-32.6	35,313	47,693	-26.0
Wyoming	4,422	4,519	5,488	146,180	188,428	-22.4	233,085	287,532	-18.9
Appalachian Total	2,795	2,939	3,479	95,295	136,677	-30.3	151,271	199,283	-24.1
Interior Total	1,772	1,846	2,403	61,487	91,459	-32.8	96,989	134,297	-27.8
Western Total	6,119	6,273	7,576	205,744	263,913	-22.0	324,656	401,522	-19.1
East of Mississippi River	4,169	4,372	5,363	143,571	210,529	-31.8	227,546	307,968	-26.1
West of Mississippi River	6,517	6,686	8,094	218,954	281,520	-22.2	345,370	427,134	-19.1
Bituminous and Lignite	10,634	11,000	13,410	360,945	490,380	-26.4	570,408	732,797	-22.2
Anthracite	52	58	47	1,580	1,669	-5.3	2,509	2,306	8.8
U.S. Total	10,686	11,058	13,457	362,526	492,049	-26.3	572,916	735,103	-22.1
Railroad Cars Loaded	60,842	62,919	79,446	2,023,642	2,778,479	-27.2	3,232,927	4,204,479	-23.1

Source: Energy Information Administration



Weekly Electric Output

Volume 88 No. 36

OUTPUT FOR WEEK ENDED - Sep 05, 2020

Sep 10, 2020

The net available amount of electric energy distributed by the Total Electric Utility Industry* for the week ended Saturday, **Sep 05, 2020** was **84,215** gigawatthours (GWh), according to the Edison Electric Institute. This is equivalent to **178** on the weekly electric output index.

WEEKLY ELECTRIC OUTPUT BY GEOGRAPHIC DIVISION

(48 CONTIGUOUS STATES)

	Week Ended September 05		52 Weeks Ended September 05	
	GWh Output	% Increase Over Corresponding Week of 2019	GWh Output	% Increase Over Corresponding Period of 2019
New England	2,225	4.0	115,106	-2.7
Mid-Atlantic	8,626	5.8	416,283	-3.5
Central Industrial	12,588	4.9	642,482	-3.5
West Central	6,348	2.0	325,063	-1.6
Southeast	22,469	3.8	997,290	-3.7
South Central	17,024	-3.7	763,972	0.6
Rocky Mountain	6,293	-7.2	286,712	1.7
Pacific Northwest	2,602	-0.6	155,455	-0.9
Pacific Southwest	6,040	-8.6	264,960	-1.4
Total United States	84,215	0.4	3,967,323	-2.0

WEEKLY ELECTRIC OUTPUT IN PREVIOUS WEEKS--GWh

Week Ended	2020	Week Ended	2019	% Inc. (20/19)	52 Weeks Ended	2020	% Inc. (20/19)
Aug 15	91,497	Aug 17	90,024	1.6	Aug 15	3,961,968	-2.3
Aug 22	86,400	Aug 24	89,601	-3.6	Aug 22	3,958,767	-2.4
Aug 29	90,683	Aug 31	82,497	9.9	Aug 29	3,966,954	-2.1
Sep 05	84,215	Sep 07	83,846	0.4	Sep 05	3,967,323	-2.0
Sep 05	2,769,275	Sep 07	2,844,821	-2.7	YEAR TO DATE, FIRST 36 WEEKS		

WEEKLY ELECTRIC OUTPUT INDEX--TOTAL U.S.*

SEASONALLY ADJUSTED 1982 = 100

Week Ended	2020	Week Ended	2019	Week Ended	2018
Aug 15	183	Aug 17	185	Aug 18	173
Aug 22	175	Aug 24	186	Aug 25	163
Aug 29	187	Aug 31	174	Sep 01	175
Sep 05	178	Sep 07	183	Sep 08	173

* Excludes Alaska and Hawaii.

+ Includes investor-owned companies, cooperatives and government-owned utilities.

Copyright © 2020 Edison Electric Institute. All rights reserved.

EEl WEEKLY ELECTRIC OUTPUT BY GEOGRAPHIC DIVISION
(48 CONTIGUOUS STATES)

	Week Ended			NMA CUMULATIVE JANUARY WEEK ONE TO			52 Weeks Ended		
	5-Sep 2020 GWh Output	7-Sep 2019 GWh Output	% Increase Over Corresponding Week	5-Sep 2020 GWh Output	7-Sep 2019 GWh Output	% Increase Over Corresponding Week	5-Sep 2020 GWh Output	7-Sep 2019 GWh Output	% Increase Over Corresponding Week
New England	2,225	2,140	4.0%	80,498	82,527	-2.5%	115,106	118,302	-2.7%
Mid-Atlantic	8,626	8,152	5.8%	291,182	303,416	-4.0%	416,283	431,429	-3.5%
Central Industrial	12,588	12,003	4.9%	449,081	467,074	-3.9%	642,482	665,563	-3.5%
West Central	6,348	6,225	2.0%	226,270	231,078	-2.1%	325,063	330,232	-1.6%
Southeast	22,469	21,643	3.8%	694,628	724,781	-4.2%	997,290	1,035,233	-3.7%
South Central	17,024	17,681	-3.7%	536,632	542,545	-1.1%	763,972	759,634	0.6%
Rocky Mountain	6,293	6,778	-7.2%	199,683	196,861	1.4%	286,712	281,900	1.7%
Pacific Northwest	2,602	2,618	-0.6%	107,218	109,264	-1.9%	155,455	156,919	-0.9%
Pacific Southwest	6,040	6,606	-8.6%	184,084	187,277	-1.7%	264,960	268,717	-1.4%
Total United States ^{1/}	84,215	83,846	0.4%	2,769,276	2,844,823	-2.7%	3,967,323	4,047,929	-2.0%
Coal Regions Only ^{2/}	73,348	72,482	1.2%	2,397,476	2,465,755	-2.8%	3,431,802	3,503,991	-2.1%

Notes: EEI output data are an estimate of electricity load made available for distribution derived as weekly net generation + purchases from non-utilities + net imports - exports - sales for resale. It is not meant to be a measure of electricity generation for the U.S. EEI survey data represent the majority of national distribution (large utilities, large government power projects, some independent and large municipal power projects). The remaining segment of the industry (smaller producers) is estimated. Non-utility generation is captured via direct sales to utilities.

^{1/} Excludes Alaska and Hawaii

^{2/} Excludes New England and Pacific regions

SOURCE: Edison Electric Institute (EEI), *Weekly Electric Output Report*.

AMERICAN IRON AND STEEL INSTITUTE
 25 Massachusetts Avenue, NW, Suite 800
 Washington, D.C. 20001

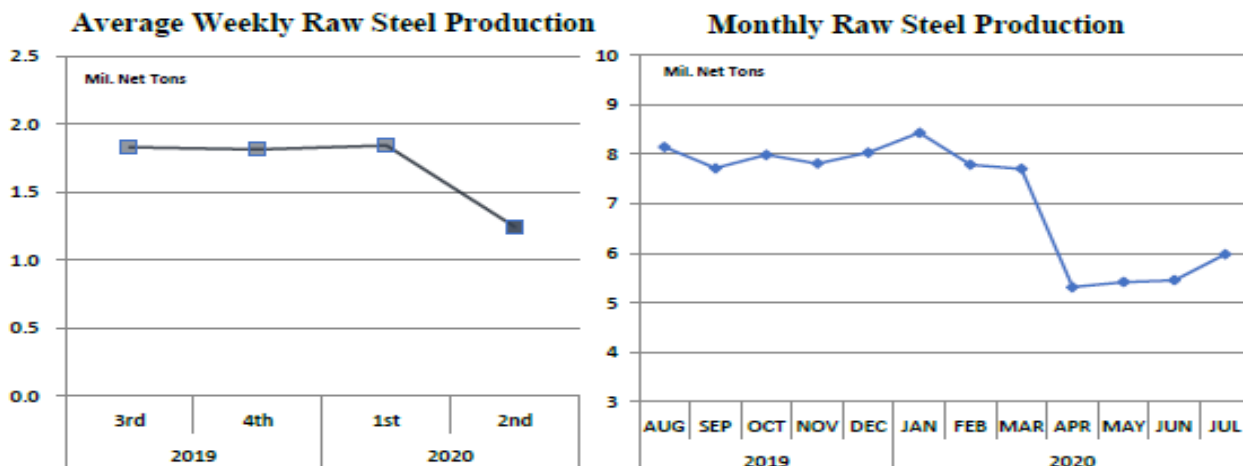
September 8, 2020

ESTIMATED WEEKLY RAW STEEL * PRODUCTION

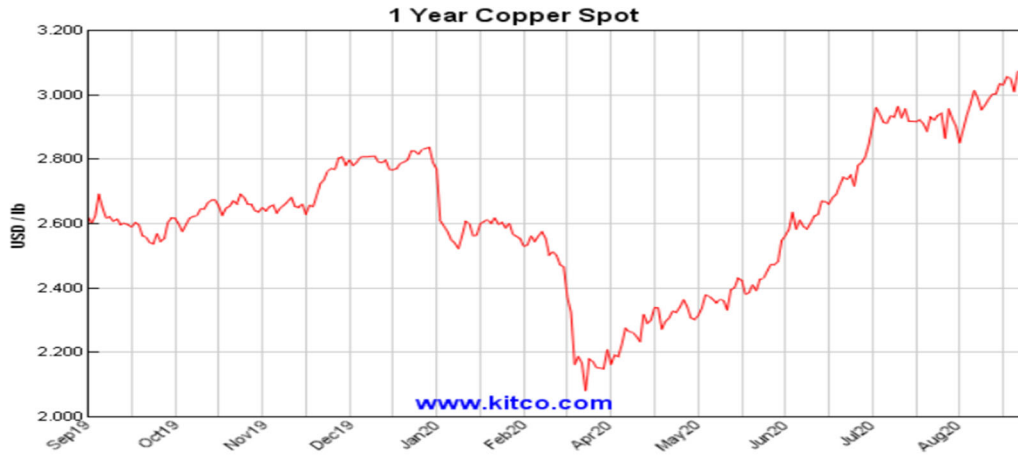
<u>Period</u>	<u>Thousand Net Tons</u>	<u>Percent Change from Previous Period</u>	<u>Percent Capability Utilization**</u>	<u>Production by District</u>		
				<u>Week Ending</u>		
				<u>Sep 5</u>	<u>Aug 29</u>	
<u>Week Ending</u>				North East	138	113
				Great Lakes	503	478
September 5, 2020	1,428	3.3	63.7	Midwest	157	162
September 5, 2019	1,813	-21.2	78.0	Southern	558	556
August 29, 2020	1,383	-2.1	61.7	Western	72	74
				Total	1,428	1,383
<u>Year-to-Date +</u>						
September 5, 2020	53,269	-20.2	65.9			
September 5, 2019	66,730	-	80.6			

*Raw steel production tonnage included in this report is estimated based on a sampling of steel producers (50% of domestic producers). Therefore, this report should be used primarily to assess production trends. The AISI production report "AIS 7," produced monthly and available by subscription, provides a more accurate summary of steel production based on data supplied by companies representing approximately 75% of U.S. production capacity plus includes revisions for previous months.

NOTE: Capacity for the third quarter 2020 is approximately 29.4 million net tons vs. 30.6 million net tons for the same period last year, and 29.1 million tons for the second quarter of 2020.



*Steel in the first solid state after melting suitable for further processing or sale, including ingots, steel for castings and strand or pressure cast blooms, slabs or other product forms. ** Based on tonnage capability to produce raw steel for a sustained full order book.



Source: Kitco website - www.kitco.com/connecting.html



Source: Kitco website - www.kitco.com/connecting.html

Week 36, 2020 – Ended September 5, 2020

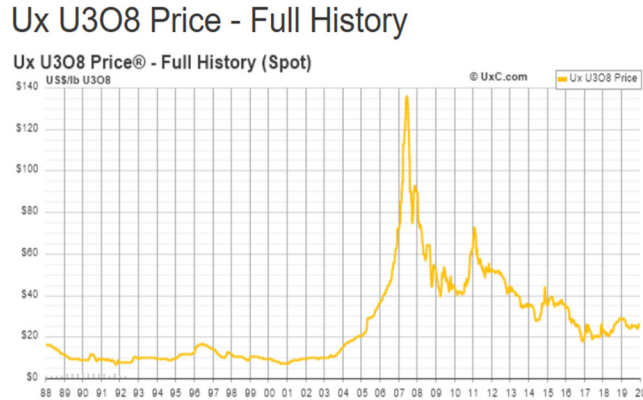
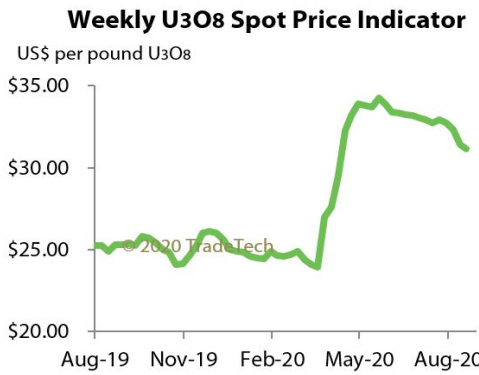
	This Week		Year-To-Date		
	Cars	vs 2019	Cumulative	Avg/wk ²	vs 2019
Total Carloads	222,298	-6.9%	7,670,555	213,071	-15.8%
Chemicals	30,290	-1.9%	1,104,669	30,685	-4.9%
Coal	60,842	-23.3%	2,053,728	57,048	-27.2%
Farm Products excl. Grain, and Food	15,351	5.7%	548,655	15,240	-2.1%
Forest Products	9,203	2.1%	332,830	9,245	-6.5%
Grain	23,003	32.4%	753,872	20,941	-4.4%
Metallic Ores and Metals	17,634	-12.0%	637,877	17,719	-19.8%
Motor Vehicles and Parts	16,296	11.9%	422,744	11,743	-27.3%
Nonmetallic Minerals	29,585	-9.6%	1,075,436	29,873	-13.7%
Petroleum and Petroleum Products	10,056	-13.9%	400,229	11,117	-12.5%
Other	10,038	15.0%	340,515	9,459	-0.9%
Total Intermodal Units	287,339	24.8%	8,897,816	247,162	-6.9%
Total Traffic	509,637	8.6%	16,568,371	460,233	-11.3%

¹ Excludes U.S. operations of Canadian Pacific, CN and GMXT.

² Average per week figures may not sum to totals as a result of independent rounding.

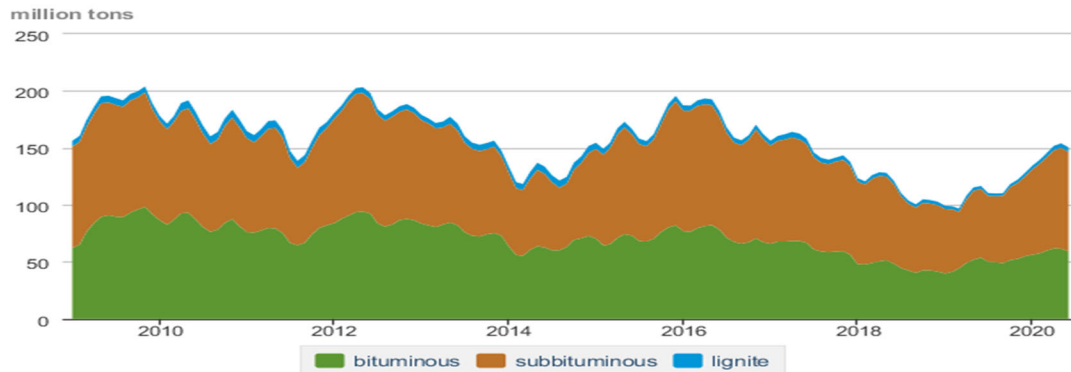
Source: AAR website - <https://www.aar.org/Pages/NEWS-and-EVENTS.aspx>

Trade Tech's and UX's Uranium Price Indicators



Sources: Trade Tech, Uranium Info Website – www.uranium.info ; Source: Ux Consulting Co., LLC – <http://www.uxc.com>

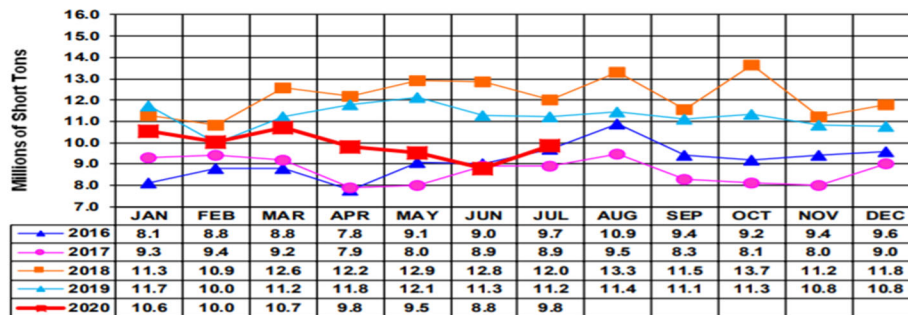
Coal stocks by type, January 2009 - June 2020



Source: U.S. Energy Information Administration

Source: Energy Information Administration, Electric Monthly Update

Coal and Coke Monthly Indicator for Internal U.S. Waterways



For the Internal U.S. Waterway Monthly Indicators, estimates for the most recent month are based on lock performance management data. The estimates will be superseded by actual data as it becomes available.

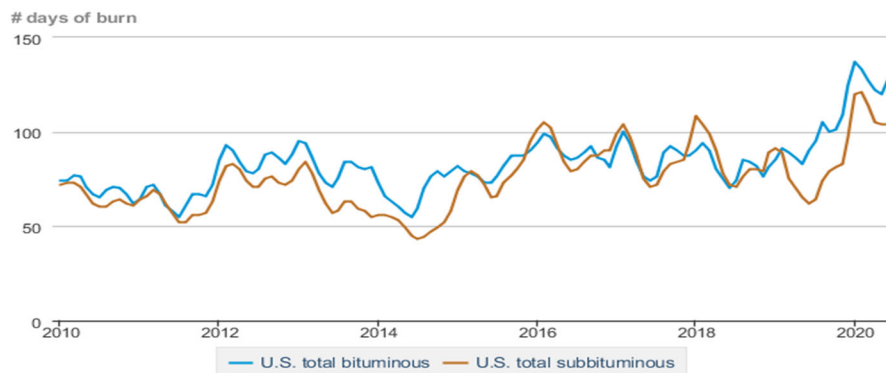
Source: Waterborne Commerce Statistics Center

Average weekly coal commodity spot prices
dollars per short ton

	Week ending					Week ago
	08/07/20	08/14/20	08/21/20	08/28/20	09/04/20	change
Central Appalachia 12,500 Btu, 1.2 SO ₂	\$55.50	\$55.50	\$55.50	\$55.50	\$59.50	\$4.00
Northern Appalachia 13,000 Btu, < 3.0 SO ₂	\$42.45	\$42.45	\$42.45	\$42.45	\$42.45	\$0.00
Illinois Basin 11,800 Btu, 5.0 SO ₂	\$34.05	\$34.05	\$34.05	\$34.05	\$34.05	\$0.00
Powder River Basin 8,800 Btu, 0.8 SO ₂	\$11.60	\$11.60	\$11.60	\$11.60	\$11.70	\$0.10
Uinta Basin 11,700 Btu, 0.8 SO ₂	\$29.10	\$29.10	\$29.10	\$29.10	\$29.10	\$0.00

Source: Energy Information Administration (with permission from S&P Global), *Coal Market Report*

Days of burn by non-lignite coal rank, January 2010 - June 2020



Source: U.S. Energy Information Administration

Source: Energy Information Administration, *Electricity Monthly Update Report*

Temperature – heating & cooling degree days (week ending Aug 27)

Region	HDD Current	HDD deviation from:		CDD Current	CDD deviation from:	
		normal	last year		normal	last year
New England	5	-2	-9	45	20	28
Middle Atlantic	0	-4	-5	70	32	47
E N Central	0	-7	-12	76	39	56
W N Central	0	-10	-11	81	31	47
South Atlantic	0	-1	0	101	17	14
E S Central	0	-1	0	87	8	4
W S Central	0	0	0	117	3	-13
Mountain	0	-12	-1	95	31	13
Pacific	1	-4	0	70	28	4
United States	0	-5	-5	84	24	23

Note: HDD = heating degree day; CDD = cooling degree day

Source: National Oceanic and Atmospheric Administration

Source: Energy Information Administration, *Natural Gas Weekly Update*.

USGS Production of Selected Mineral Commodities	2020 Year to Date - 2nd Quarter	2019 Year to Date - 2nd Quarter	Percent Change
Aluminum, secondary (000 Mt.)	410.0	419.0	-2%
Cement (Mil. Mt.)	41.5	40.2	3%
Copper (000 Mt.)	590.0	615.0	-4%
Gold (Mt.)	91.9	100.0	-8%
Gypsum (Mil. Mt.)	8.5	8.7	-2%
Iron Ore (Mil. Mt.)	17.4	23.3	-25%
Lead (000 Mt.)	137.0	136.0	1%
Molybdenum (000 Mt.)	29.2	21.7	35%
Phosphate rock (Mil. Mt.)	11.9	11.3	5%
Sand & gravel, construction (Mil. Mt.)	428.0	431.0	-1%
Silver (Mt.)	490.0	482.0	2%
Soda ash (Mil. Mt.)	5.1	5.8	-12%
Stone, crushed (Mil. Mt.)	694.0	699.0	-1%
Zinc (000 Mt.)	308.0	362.0	-15%

Source: U.S. Geological Survey, Mineral Industry Surveys. Percent change based on USGS rounded numbers. 2020 data are preliminary estimates. W - withheld, N/A - not available

Natural gas spot prices (Henry Hub)

dollars per million British thermal units



eia Source: Natural Gas Intelligence

Source: Energy Information Administration, *Natural Gas Weekly*.

EIA Coal Stocks and Average Number of Days of Burn (Power Sector)

Coal stocks and average number of days of burn for non-lignite coal by region (electric power sector)

Zone	Coal	June 2020		June 2019		% Change of Stocks	May 2020		% Change of Stocks
		Stocks (1000 tons)	Days of Burn	Stocks (1000 tons)	Days of Burn		Stocks (1000 tons)	Days of Burn	
Northeast	Bituminous	3,857	278	4,129	196	-6.6%	3,895	282	-1.0%
	Subbituminous	162	232	163	227	-1.1%	162	253	0.0%
South	Bituminous	25,421	116	24,501	91	3.8%	25,808	110	-1.5%
	Subbituminous	7,789	82	4,739	45	64.4%	8,398	88	-7.3%
Midwest	Bituminous	14,156	117	10,844	78	30.5%	14,036	112	0.9%
	Subbituminous	30,931	126	22,647	73	36.6%	31,397	122	-1.5%
West	Bituminous	4,059	166	3,776	71	7.5%	3,950	165	2.8%
	Subbituminous	29,708	93	20,773	58	43.0%	29,864	94	-0.5%
U.S. Total	Bituminous	47,493	128	43,250	90	9.8%	47,689	120	-0.4%
	Subbituminous	68,589	104	48,322	62	41.9%	69,821	104	-1.8%

Source: Energy Information Administration, *Electricity Monthly Update*

EIA Working Natural Gas Underground Storage

Working gas in underground storage

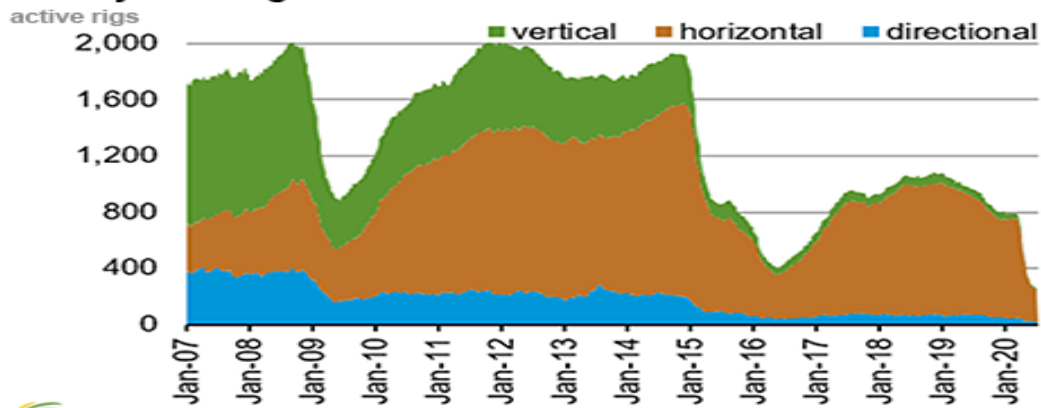
Region	Stocks billion cubic feet (Bcf)		
	2020-08-28	2020-08-21	change
East	789	775	14
Midwest	924	904	20
Mountain	212	212	0
Pacific	304	306	-2
South Central	1,225	1,223	2
Total	3,455	3,420	35

Source: Form EIA-912, *Weekly Underground Natural Gas Storage Report*

Source: Energy Information Administration, *Natural Gas Weekly Update*

EIA Natural Gas Rig Count

Weekly total rig count



Source: Baker Hughes Co.

Source: Energy Information Administration, *Natural Gas Weekly Update*

EIA Oil and Natural Gas Rig Productivity

Region	New-well oil production per rig barrels/day			New-well gas production per rig thousand cubic feet/day		
	August 2020	September 2020	change	August 2020	September 2020	change
Anadarko	1,275	1,301	26	7,641	7,794	153
Appalachia	169	171	2	24,204	24,930	726
Bakken	2,099	2,368	269	2,839	3,207	368
Eagle Ford	2,418	2,466	48	8,265	8,430	165
Haynesville	19	20	1	11,196	11,207	11
Niobrara	1,932	2,028	96	5,462	5,571	109
Permian	963	1,127	164	1,873	2,098	225
Rig-weighted average	898	982	84	7,189	7,409	220

Source: Energy Information Administration, *Drilling Productivity Report*