
NATIONAL MINING ASSOCIATION

Weekly Statistical Summary

September 18, 2020 Edition
(Data for Week Ending September 12, 2020)

Prepared by
National Mining Association



101 Constitution Avenue, NW, Suite 500 East
Washington, DC, 20001
Phone (202) 463-2600
<http://www.nma.org>

NMA Weekly Statistical Summary

Vol. 58, No. 37
Dated 09/18/20

PRODUCTION, CONSUMPTION & TRADE

	Week Ended			* Cumulative Jan 1 to		
	09/12/20	09/14/19	% Chng	09/12/20	09/12/19	% Chng
EIA Coal Production (000 Tons):						
Week Ended/Year to Date	10,335	14,048	-26.4%	372,861	506,033	-26.3%
52 Weeks Ended	569,203	734,663	-22.5%			
AAR Coal Rail Cars Loaded:	60,278	80,753	-25.4%	2,083,920	2,859,462	-27.1%
Coal Production Month Ended - Aug	August 2019		% Chng	Jan - August 2019		% Chng
	47,394	63,795	-25.7%	354,725	482,461	-26.5%
DOC Coal Trade (000 Tons)						
Exports:	July 2019		% Chng	Jan - July 2019		% Chng
Metallurgical	3,724	3,656	1.9%	24,397	32,661	-25.3%
Steam Bit. *	1,581	2,761	-42.7%	15,551	24,144	-35.6%
Lignite	7	8	-12.5%	54	55	-1.8%
Anthracite	52	70	-25.7%	146	191	-23.6%
Total	5,364	6,495	-17.4%	40,148	57,051	-29.6%
Imports:	473	511	-7.4%	2,959	3,804	-22.2%
	Week Ended			Cumulative Week 1 to		
	09/12/20	09/14/19	% Chng	09/12/20	09/14/19	% Chng
EI Electric Total Output (Mil. Kwh)	77,474	84,144	-7.9%	2,846,749	2,928,965	-2.8%
EI Coal Region Output (Mil. Kwh)	66,640	73,640	-9.5%	2,464,116	2,539,395	-3.0%
AISI Raw Steel Output (000 Tons)	1,459	1,801	-19.0%	54,728	68,531	-20.1%

EIA (S&P Global) AVERAGE COAL & NATURAL GAS SPOT PRICES Dollars Per Short Ton

Average Coal Spot Prices (\$/Short Ton)	Week Ending			Natural Gas Spot Prices (\$/MMBtu)	
	09/11/20	09/04/20	% Chng	Wed.	09/09/20
Central App, 12,500 Btu, 1.2 SO ₂	\$59.50	\$59.50	0.0%	Henry Hub	2.19
Northern App, 13,000 Btu, < 3.0 SO ₂	42.45	42.45	0.0%	New York	1.66
Illinois Basin, 11,800, 5.0 SO ₂	34.05	34.05	0.0%	Chicago	1.95
Powder River Basin, 8,800 Btu 0.8 SO ₂	11.70	11.70	0.0%	Cal.Comp.Avg.	2.88
Uinta Basin, 11,700 Btu, 0.8 SO ₂	29.10	29.10	0.0%		

Coal exports and Imports are "as reported" (not revised); *Steam excludes lignite & anthracite. All data in this report are preliminary and subject to revision. r/ revised.

Sources: EIA; Edison Electric Institute; American Iron & Steel Institute; Association of American Railroads; Dept. of Commerce; S&P Global; NGI's Daily Gas Price Index



NMA
THE AMERICAN RESOURCE

National Mining Association Web Site: [http:// www.nma.org](http://www.nma.org)

EIA Estimated Weekly U.S. Coal Production Overview									
Coal-Producing Region & State (thousand short tons)	Week Ended			Year to Date			52 Weeks Ended		
	9/12/2020 (week 37)	9/5/2020 (week 36)	9/14/2019 (week 37)	9/12/2020	9/12/2019	% Change	9/12/2020	9/14/2019	% Change
Alabama	205	215	263	8,528	10,481	-18.6	12,098	14,816	-18.3
Alaska	17	17	18	687	687	-0.1	969	1,014	-4.4
Arizona	.	.	45	.	3,731	-100.0	99	5,637	-98.2
Colorado	183	191	257	6,867	9,361	-26.6	10,302	13,369	-22.9
Illinois	593	609	897	22,570	34,502	-34.6	33,713	49,113	-31.4
Indiana	399	414	590	14,619	23,047	-36.6	22,966	33,673	-31.8
Kentucky Total	443	468	688	16,452	26,745	-38.5	25,626	38,361	-33.2
Eastern (KY)	155	166	264	5,822	10,447	-44.3	9,173	15,311	-40.1
Western (KY)	289	302	424	10,629	16,298	-34.8	16,453	23,051	-28.6
Louisiana	24	26	36	805	1,119	-28.0	1,214	1,505	-19.3
Maryland	23	23	28	844	1,048	-19.5	1,259	1,453	-13.4
Mississippi	45	49	56	1,784	1,964	-9.2	2,502	2,789	-10.3
Missouri	3	3	4	108	139	-22.1	157	216	-27.3
Montana	559	590	819	19,543	24,090	-18.9	29,691	36,790	-19.3
New Mexico	197	208	266	7,528	10,481	-28.2	11,509	15,037	-23.5
North Dakota	460	476	530	17,822	18,680	-4.6	25,991	27,429	-5.2
Ohio	87	93	141	2,932	5,792	-49.4	4,880	8,681	-43.8
Oklahoma	3	3	5	28	169	-83.4	85	303	-71.9
Pennsylvania Total	729	737	883	25,361	35,369	-28.3	39,823	50,195	-20.7
Anthracite (PA)	49	52	49	1,629	1,718	-5.2	2,508	2,320	8.1
Bituminous (PA)	680	685	833	23,732	33,650	-29.5	37,315	47,874	-22.1
Tennessee	9	10	11	191	296	-35.6	327	365	-10.4
Texas	352	367	496	12,649	16,719	-24.3	19,098	23,574	-19.0
Utah	208	215	244	8,740	10,624	-17.7	12,453	14,694	-15.3
Virginia	188	198	256	7,122	9,000	-20.9	10,519	12,855	-18.2
West Virginia Total	1,312	1,354	1,784	47,202	67,859	-30.4	72,269	95,594	-24.4
Northern (WV)	670	688	868	24,291	33,897	-28.3	37,230	47,897	-22.3
Southern (WV)	643	666	917	22,911	33,962	-32.5	35,039	47,697	-26.5
Wyoming	4,297	4,422	5,729	150,477	194,132	-22.5	231,653	287,200	-19.3
Appalachian Total	2,708	2,795	3,631	98,003	140,292	-30.1	150,348	199,270	-24.6
Interior Total	1,707	1,772	2,508	63,194	93,956	-32.7	96,188	134,223	-28.3
Western Total	5,920	6,119	7,908	211,664	271,785	-22.1	322,667	401,170	-19.6
East of Mississippi River	4,034	4,169	5,599	147,606	216,102	-31.7	225,981	307,894	-26.6
West of Mississippi River	6,301	6,517	8,449	225,255	289,931	-22.3	343,222	426,769	-19.6
Bituminous and Lignite	10,286	10,634	13,999	371,232	504,315	-26.4	566,695	732,343	-22.6
Anthracite	49	52	49	1,629	1,718	-5.2	2,508	2,320	8.1
U.S. Total	10,335	10,686	14,048	372,861	506,033	-26.3	569,203	734,663	-22.5
Railroad Cars Loaded	60,278	60,842	80,753	2,083,920	2,859,462	-27.1	3,212,452	4,199,670	-23.5

Source: Energy Information Administration



Weekly Electric Output

Volume 88 No. 37

OUTPUT FOR WEEK ENDED - Sep 12, 2020

Sep 16, 2020

The net available amount of electric energy distributed by the Total Electric Utility Industry* for the week ended Saturday, **Sep 12, 2020** was **77,474** gigawatthours (GWh), according to the Edison Electric Institute. This is equivalent to **187** on the weekly electric output index.

WEEKLY ELECTRIC OUTPUT BY GEOGRAPHIC DIVISION

(48 CONTIGUOUS STATES)

	Week Ended September 12		52 Weeks Ended September 12	
	GWh Output	% Increase Over Corresponding Week of 2019	GWh Output	% Increase Over Corresponding Period of 2019
New England	2,273	7.5	115,264	-2.5
Mid-Atlantic	8,368	1.1	416,370	-3.5
Central Industrial	11,694	-11.5	640,959	-3.8
West Central	5,867	-11.2	324,320	-1.8
Southeast	20,014	-11.0	994,804	-4.0
South Central	15,333	-11.8	761,917	0.0
Rocky Mountain	5,364	-5.0	286,432	1.7
Pacific Northwest	2,471	-0.8	155,434	-1.0
Pacific Southwest	6,090	3.3	265,153	-1.4
Total United States	77,474	-7.9	3,960,652	-2.3

WEEKLY ELECTRIC OUTPUT IN PREVIOUS WEEKS--GWh

Week Ended	2020	Week Ended	2019	% Inc. (20/19)	52 Weeks Ended	2020	% Inc. (20/19)
Aug 22	86,400	Aug 24	89,601	-3.6	Aug 22	3,958,767	-2.4
Aug 29	90,683	Aug 31	82,497	9.9	Aug 29	3,966,954	-2.1
Sep 05	84,215	Sep 07	83,846	0.4	Sep 05	3,967,323	-2.0
Sep 12	77,474	Sep 14	84,144	-7.9	Sep 12	3,960,653	-2.3
Sep 12	2,846,749	Sep 14	2,928,965	-2.8	YEAR TO DATE, FIRST 37 WEEKS		

WEEKLY ELECTRIC OUTPUT INDEX--TOTAL U.S.* SEASONALLY ADJUSTED 1982 = 100

Week Ended	2020	Week Ended	2019	Week Ended	2018
Aug 22	175	Aug 24	186	Aug 25	163
Aug 29	187	Aug 31	174	Sep 01	175
Sep 05	178	Sep 07	183	Sep 08	173
Sep 12	187	Sep 14	200	Sep 15	182

* Excludes Alaska and Hawaii.

+ Includes investor-owned companies, cooperatives and government-owned utilities.

Copyright © 2020 Edison Electric Institute. All rights reserved.

**EEI WEEKLY ELECTRIC OUTPUT BY GEOGRAPHIC DIVISION
(48 CONTIGUOUS STATES)**

	Week Ended			NMA CUMULATIVE JANUARY WEEK ONE TO			52 Weeks Ended		
	12-Sep 2020 GWh Output	14-Sep 2019 GWh Output	% Increase Over Corresponding Week	12-Sep 2020 GWh Output	14-Sep 2019 GWh Output	% Increase Over Corresponding Week	12-Sep 2020 GWh Output	14-Sep 2019 GWh Output	% Increase Over Corresponding Week
New England	2,273	2,115	7.5%	82,771	84,642	-2.2%	115,264	118,170	-2.5%
Mid-Atlantic	8,368	8,281	1.1%	299,550	311,697	-3.9%	416,370	431,535	-3.5%
Central Industrial	11,694	13,217	-11.5%	460,775	480,291	-4.1%	640,959	666,253	-3.8%
West Central	5,867	6,610	-11.2%	232,137	237,688	-2.3%	324,320	330,193	-1.8%
Southeast	20,014	22,500	-11.0%	714,642	747,281	-4.4%	994,804	1,036,791	-4.0%
South Central	15,333	17,388	-11.8%	551,965	559,933	-1.4%	761,917	762,076	0.0%
Rocky Mountain	5,364	5,644	-5.0%	205,047	202,505	1.3%	286,432	281,716	1.7%
Pacific Northwest	2,471	2,492	-0.8%	109,689	111,756	-1.8%	155,434	156,928	-1.0%
Pacific Southwest	6,090	5,897	3.3%	190,174	193,174	-1.6%	265,153	268,814	-1.4%
Total United States ^{1/}	<u>77,474</u>	<u>84,144</u>	-7.9%	<u>2,846,750</u>	<u>2,928,967</u>	-2.8%	3,960,653	4,052,476	-2.3%
Coal Regions Only ^{2/}	66,640	73,640	-9.5%	2,464,116	2,539,395	-3.0%	3,424,802	3,508,564	-2.4%

Notes: EEI output data are an estimate of electricity load made available for distribution derived as weekly net generation + purchases from non-utilities + net imports - exports - sales for resale. It is not meant to be a measure of electricity generation for the U.S. EEI survey data represent the majority of national distribution (large utilities, large government power projects, some independent and large municipal power projects). The remaining segment of the industry (smaller producers) is estimated. Non-utility generation is captured via direct sales to utilities.

^{1/} Excludes Alaska and Hawaii

^{2/} Excludes New England and Pacific regions

SOURCE: Edison Electric Institute (EEI), *Weekly Electric Output Report*.

AMERICAN IRON AND STEEL INSTITUTE
 25 Massachusetts Avenue, NW, Suite 800
 Washington, D.C. 20001

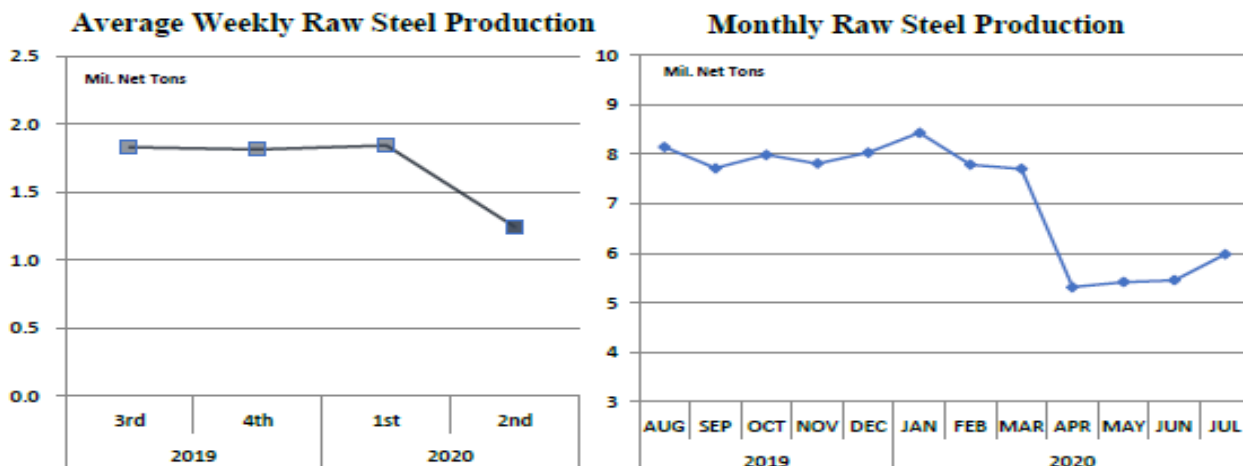
September 14, 2020

ESTIMATED WEEKLY RAW STEEL * PRODUCTION

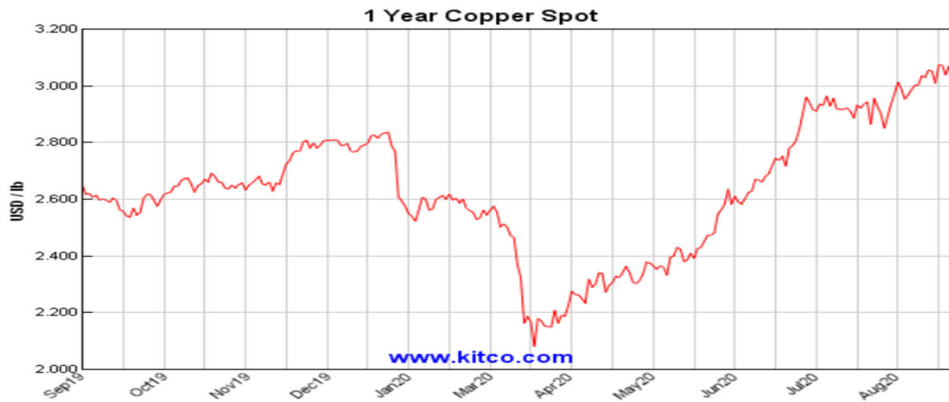
<u>Period</u>	<u>Thousand Net Tons</u>	<u>Percent Change from Previous Period</u>	<u>Percent Capability Utilization**</u>	<u>Production by District</u>		
				<u>Week Ending</u>		
				<u>Sep 12</u>	<u>Sep 5</u>	
<u>Week Ending</u>				North East	122	138
				Great Lakes	530	503
September 12, 2020	1,459	2.2	65.1	Midwest	172	157
September 12, 2019	1,801	-19.0	77.4	Southern	565	558
September 5, 2020	1,428	3.3	63.7	Western	<u>70</u>	<u>72</u>
				Total	1,459	1,428
<u>Year-to-Date +</u>						
September 12, 2020	54,728	-20.1	65.9			
September 12, 2019	68,531	-	80.3			

*Raw steel production tonnage included in this report is estimated based on a sampling of steel producers (50% of domestic producers). Therefore, this report should be used primarily to assess production trends. The AISI production report "AIS 7," produced monthly and available by subscription, provides a more accurate summary of steel production based on data supplied by companies representing approximately 75% of U.S. production capacity plus includes revisions for previous months.

NOTE: Capacity for the third quarter 2020 is approximately 29.4 million net tons vs. 30.6 million net tons for the same period last year, and 29.1 million tons for the second quarter of 2020.



*Steel in the first solid state after melting suitable for further processing or sale, including ingots, steel for castings and strand or pressure cast blooms, slabs or other product forms. ** Based on tonnage capability to produce raw steel for a sustained full order book.



Source: Kitco website - www.kitco.com/connecting.html



Source: Kitco website - www.kitco.com/connecting.html

U.S. Rail Traffic¹
Week 37, 2020 – Ended September 12, 2020

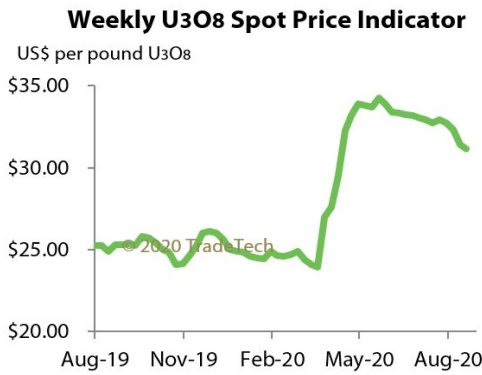
	This Week		Year-To-Date		
	Cars	vs 2019	Cumulative	Avg/wk ²	vs 2019
Total Carloads	214,142	-15.2%	7,884,697	213,100	-15.8%
Chemicals	29,239	-5.7%	1,133,908	30,646	-5.0%
Coal	60,278	-25.4%	2,114,006	57,135	-27.2%
Farm Products excl. Grain, and Food	15,314	-0.4%	563,969	15,242	-2.0%
Forest Products	8,947	-9.4%	341,777	9,237	-6.6%
Grain	21,550	16.8%	775,422	20,957	-3.9%
Metallic Ores and Metals	18,157	-20.4%	656,034	17,731	-19.8%
Motor Vehicles and Parts	14,968	-13.7%	437,712	11,830	-26.9%
Nonmetallic Minerals	26,760	-25.2%	1,102,196	29,789	-14.0%
Petroleum and Petroleum Products	10,376	-11.1%	410,605	11,097	-12.4%
Other	8,553	-9.4%	349,068	9,434	-1.1%
Total Intermodal Units	260,643	-5.0%	9,158,459	247,526	-6.9%
Total Traffic	474,785	-9.9%	17,043,156	460,626	-11.2%

¹ Excludes U.S. operations of Canadian Pacific, CN and GMXT.

² Average per week figures may not sum to totals as a result of independent rounding.

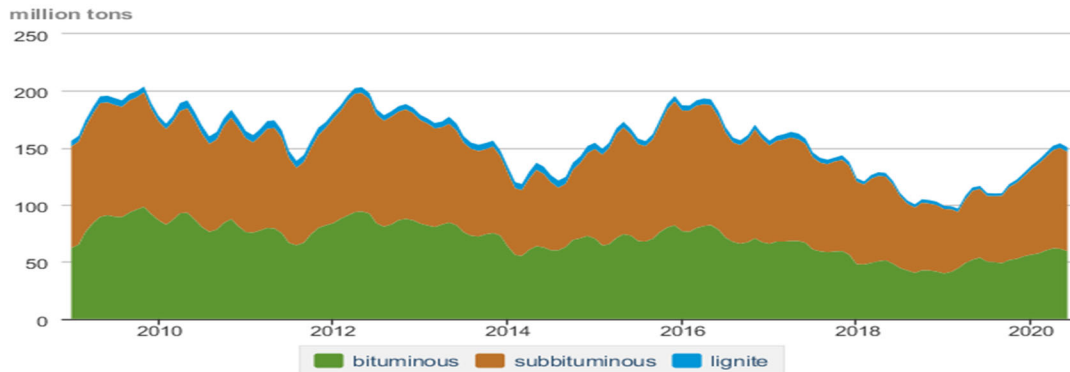
Source: AAR website - <https://www.aar.org/Pages/NEWS-and-EVENTS.aspx>

Trade Tech's and UX's Uranium Price Indicators



Sources: Trade Tech, Uranium Info Website – www.uranium.info ; Source: Ux Consulting Co., LLC – <http://www.uxc.com>

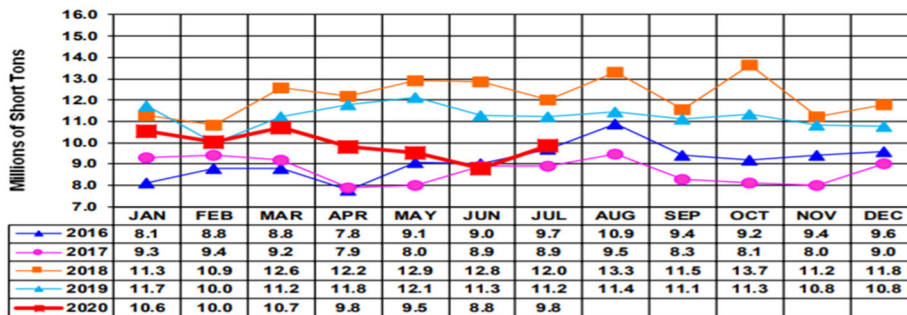
Coal stocks by type, January 2009 - June 2020



Source: U.S. Energy Information Administration

Source: Energy Information Administration, Electric Monthly Update

Coal and Coke Monthly Indicator for Internal U.S. Waterways



For the Internal U.S. Waterway Monthly Indicators, estimates for the most recent month are based on lock performance management data. The estimates will be superseded by actual data as it becomes available.

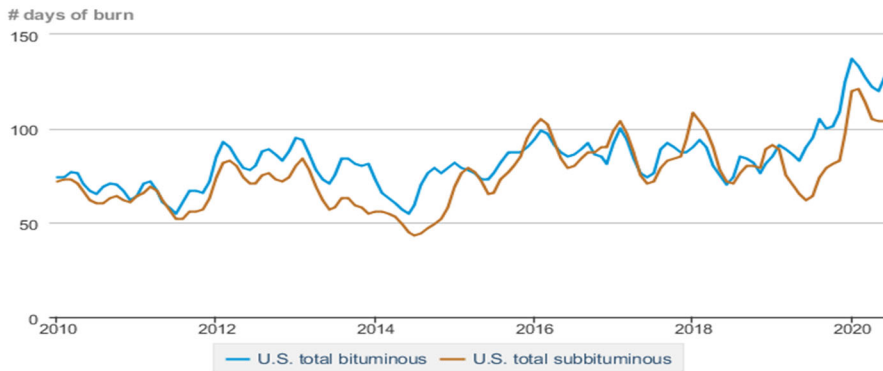
Source: Waterborne Commerce Statistics Center

Average weekly coal commodity spot prices
dollars per short ton

	Week ending					Week ago
	08/14/20	08/21/20	08/28/20	09/04/20	09/11/20	change
Central Appalachia 12,500 Btu, 1.2 SO ₂	\$55.50	\$55.50	\$55.50	\$59.50	\$59.50	\$0.00
Northern Appalachia 13,000 Btu, < 3.0 SO ₂	\$42.45	\$42.45	\$42.45	\$42.45	\$42.45	\$0.00
Illinois Basin 11,800 Btu, 5.0 SO ₂	\$34.05	\$34.05	\$34.05	\$34.05	\$34.05	\$0.00
Powder River Basin 8,800 Btu, 0.8 SO ₂	\$11.60	\$11.60	\$11.60	\$11.70	\$11.70	\$0.00
Uinta Basin 11,700 Btu, 0.8 SO ₂	\$29.10	\$29.10	\$29.10	\$29.10	\$29.10	\$0.00

Source: Energy Information Administration (with permission from S&P Global), *Coal Market Report*

Days of burn by non-lignite coal rank, January 2010 - June 2020



Source: U.S. Energy Information Administration

Source: Energy Information Administration, *Electricity Monthly Update Report*

Temperature – heating & cooling degree days (week ending Sep 03)

Region	HDD Current	HDD deviation from:		CDD Current	CDD deviation from:	
		normal	last year		normal	last year
New England	7	-2	1	19	1	2
Middle Atlantic	2	-4	0	46	17	13
E N Central	5	-5	-5	45	16	23
W N Central	9	-6	-4	43	3	7
South Atlantic	0	-1	0	106	28	17
E S Central	0	-1	0	101	30	24
W S Central	0	-1	0	133	27	11
Mountain	8	-10	7	64	7	-25
Pacific	2	-5	2	48	9	-24
United States	3	-4	-1	70	17	7

Note: HDD = heating degree day; CDD = cooling degree day

Source: National Oceanic and Atmospheric Administration

Source: Energy Information Administration, *Natural Gas Weekly Update*.

USGS Production of Selected Mineral Commodities	2020 Year to Date - 2nd Quarter	2019 Year to Date - 2nd Quarter	Percent Change
Aluminum, secondary (000 Mt.)	410.0	419.0	-2%
Cement (Mil. Mt.)	41.5	40.2	3%
Copper (000 Mt.)	590.0	615.0	-4%
Gold (Mt.)	91.9	100.0	-8%
Gypsum (Mil. Mt.)	8.5	8.7	-2%
Iron Ore (Mil. Mt.)	17.4	23.3	-25%
Lead (000 Mt.)	137.0	136.0	1%
Molybdenum (000 Mt.)	29.2	21.7	35%
Phosphate rock (Mil. Mt.)	11.9	11.3	5%
Sand & gravel, construction (Mil. Mt.)	428.0	431.0	-1%
Silver (Mt.)	490.0	482.0	2%
Soda ash (Mil. Mt.)	5.1	5.8	-12%
Stone, crushed (Mil. Mt.)	694.0	699.0	-1%
Zinc (000 Mt.)	308.0	362.0	-15%

Source: U.S. Geological Survey, Mineral Industry Surveys. Percent change based on USGS rounded numbers. 2020 data are preliminary estimates. W - withheld, N/A - not available

Natural gas spot prices (Henry Hub)

dollars per million British thermal units



eia Source: Natural Gas Intelligence

Source: Energy Information Administration, *Natural Gas Weekly*.

EIA Coal Stocks and Average Number of Days of Burn (Power Sector)

Coal stocks and average number of days of burn for non-lignite coal by region (electric power sector)

Zone	Coal	June 2020		June 2019		% Change of Stocks	May 2020		% Change of Stocks
		Stocks (1000 tons)	Days of Burn	Stocks (1000 tons)	Days of Burn		Stocks (1000 tons)	Days of Burn	
Northeast	Bituminous	3,857	278	4,129	196	-6.6%	3,895	282	-1.0%
	Subbituminous	162	232	163	227	-1.1%	162	253	0.0%
South	Bituminous	25,421	116	24,501	91	3.8%	25,808	110	-1.5%
	Subbituminous	7,789	82	4,739	45	64.4%	8,398	88	-7.3%
Midwest	Bituminous	14,156	117	10,844	78	30.5%	14,036	112	0.9%
	Subbituminous	30,931	126	22,647	73	36.6%	31,397	122	-1.5%
West	Bituminous	4,059	166	3,776	71	7.5%	3,950	165	2.8%
	Subbituminous	29,708	93	20,773	58	43.0%	29,864	94	-0.5%
U.S. Total	Bituminous	47,493	128	43,250	90	9.8%	47,689	120	-0.4%
	Subbituminous	68,589	104	48,322	62	41.9%	69,821	104	-1.8%

Source: Energy Information Administration, *Electricity Monthly Update*

EIA Working Natural Gas Underground Storage

Working gas in underground storage

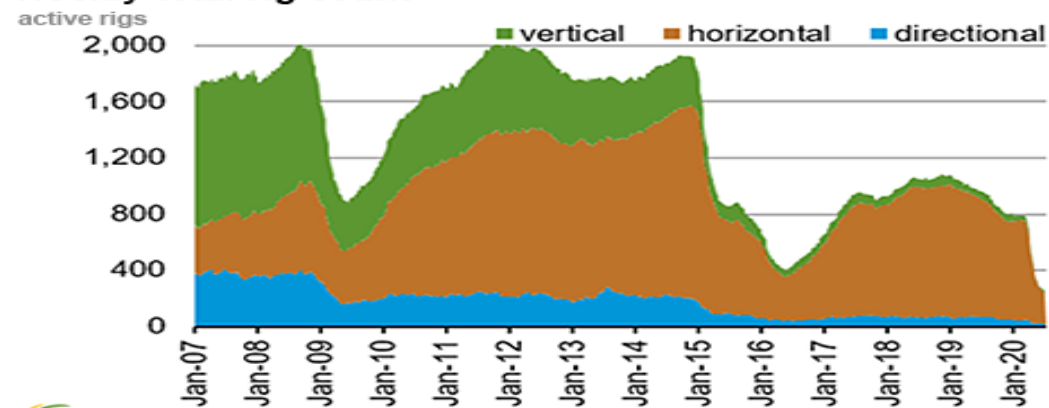
Region	Stocks billion cubic feet (Bcf)		
	2020-09-04	2020-08-28	change
East	805	789	16
Midwest	953	924	29
Mountain	216	212	4
Pacific	308	304	4
South Central	1,243	1,225	18
Total	3,525	3,455	70

Source: Form EIA-912, *Weekly Underground Natural Gas Storage Report*

Source: Energy Information Administration, *Natural Gas Weekly Update*

EIA Natural Gas Rig Count

Weekly total rig count



Source: Baker Hughes Co.

Source: Energy Information Administration, *Natural Gas Weekly Update*

EIA Oil and Natural Gas Rig Productivity

Region	New-well oil production per rig barrels/day			New-well gas production per rig thousand cubic feet/day		
	September 2020	October 2020	change	September 2020	October 2020	change
Anadarko	1,070	1,016	(54)	6,801	6,461	(340)
Appalachia	171	172	1	25,664	26,177	513
Bakken	2,368	2,200	(168)	3,207	2,944	(263)
Eagle Ford	2,383	2,430	47	8,416	8,584	168
Haynesville	20	20	-	11,268	11,270	2
Niobrara	2,019	2,029	10	5,545	5,556	11
Permian	1,114	1,192	78	2,102	2,144	42
Rig-weighted average	962	993	31	7,491	7,438	(53)

Source: Energy Information Administration, *Drilling Productivity Report*