
NATIONAL MINING ASSOCIATION

Weekly Statistical Summary

October 2, 2020 Edition
(Data for Week Ending September 26, 2020)

Prepared by
National Mining Association



101 Constitution Avenue, NW, Suite 500 East
Washington, DC, 20001
Phone (202) 463-2600
<http://www.nma.org>

NMA Weekly Statistical Summary

Vol. 58, No. 39
Dated 10/02/20

PRODUCTION, CONSUMPTION & TRADE

	Week Ended			* Cumulative Jan 1 to		
	09/26/20	09/28/19	% Chng	09/26/20	09/26/19	% Chng
EIA Coal Production (000 Tons):						
Week Ended/Year to Date	10,247	13,755	-25.5%	393,927	533,592	-26.2%
52 Weeks Ended	562,793	732,114	-23.1%			
AAR Coal Rail Cars Loaded:	58,220	79,066	-26.4%	2,203,596	3,017,886	-27.0%
Coal Production Month Ended - Aug	August 2019		% Chng	Jan - August 2019		% Chng
	47,394	63,795	-25.7%	354,725	482,461	-26.5%
DOC Coal Trade (000 Tons)						
Exports:	July 2019		% Chng	Jan - July 2019		% Chng
Metallurgical	3,724	3,656	1.9%	24,397	32,661	-25.3%
Steam Bit. *	1,581	2,761	-42.7%	15,551	24,144	-35.6%
Lignite	7	8	-12.5%	54	55	-1.8%
Anthracite	52	70	-25.7%	146	191	-23.6%
Total	5,364	6,495	-17.4%	40,148	57,051	-29.6%
Imports:	473	511	-7.4%	2,959	3,804	-22.2%
	Week Ended			Cumulative Week 1 to		
	09/26/20	09/28/19	% Chng	09/26/20	09/28/19	% Chng
EI Electric Total Output (Mil. Kwh)	69,966	79,349	-11.8%	2,990,701	3,089,084	-3.2%
EI Coal Region Output (Mil. Kwh)	59,965	68,919	-13.0%	2,587,930	2,679,051	-3.4%
AISI Raw Steel Output (000 Tons)	1,480	1,801	-17.8%	57,654	72,134	-20.1%

EIA (S&P Global) AVERAGE COAL & NATURAL GAS SPOT PRICES Dollars Per Short Ton

Average Coal Spot Prices (\$/Short Ton)	Week Ending			Natural Gas Spot Prices (\$/MMBtu)	
	09/25/20	09/18/20	% Chng	Wed.	09/23/20
Central App, 12,500 Btu, 1.2 SO ₂	\$59.50	\$59.50	0.0%	Henry Hub	1.74
Northern App, 13,000 Btu, < 3.0 SO ₂	42.45	42.45	0.0%	New York	1.28
Illinois Basin, 11,800, 5.0 SO ₂	34.05	34.05	0.0%	Chicago	1.74
Powder River Basin, 8,800 Btu 0.8 SO ₂	11.70	11.70	0.0%	Cal.Comp.Avg.	2.76
Uinta Basin, 11,700 Btu, 0.8 SO ₂	29.10	29.10	0.0%		

Coal exports and Imports are "as reported" (not revised); *Steam excludes lignite & anthracite. All data in this report are preliminary and subject to revision. r/ revised.

Sources: EIA; Edison Electric Institute; American Iron & Steel Institute; Association of American Railroads; Dept. of Commerce; S&P Global; NGI's Daily Gas Price Index



NMA
THE AMERICAN RESOURCE

National Mining Association Web Site: [http:// www.nma.org](http://www.nma.org)

EIA Estimated Weekly U.S. Coal Production Overview									
Coal-Producing Region & State (thousand short tons)	Week Ended			Year to Date			52 Weeks Ended		
	9/26/2020 (week 39)	9/19/2020 (week 38)	9/28/2019 (week 39)	9/26/2020	9/26/2019	% Change	9/26/2020	9/28/2019	% Change
Alabama	206	212	258	8,946	10,997	-18.7	12,001	14,768	-18.7
Alaska	16	17	18	719	723	-0.5	966	1,021	-5.4
Arizona	.	.	44	.	3,819	-100.0	12	5,459	-99.8
Colorado	183	195	252	7,245	9,865	-26.6	10,177	13,313	-23.6
Illinois	584	592	878	23,747	36,261	-34.5	33,136	48,955	-32.3
Indiana	397	415	578	15,432	24,204	-36.2	22,624	33,527	-32.5
Kentucky Total	449	472	674	17,373	28,095	-38.2	25,201	38,212	-34.0
Eastern (KY)	159	168	259	6,150	10,965	-43.9	8,984	15,190	-40.9
Western (KY)	290	304	415	11,224	17,130	-34.5	16,217	23,022	-29.6
Louisiana	25	27	36	857	1,190	-28.0	1,195	1,497	-20.2
Maryland	23	24	28	890	1,104	-19.4	1,249	1,466	-14.8
Mississippi	47	49	55	1,880	2,074	-9.4	2,488	2,766	-10.1
Missouri	3	3	4	114	147	-22.4	155	214	-27.6
Montana	566	614	802	20,723	25,698	-19.4	29,268	36,917	-20.7
New Mexico	199	211	260	7,939	11,002	-27.8	11,400	15,087	-24.4
North Dakota	456	501	519	18,779	19,719	-4.8	25,912	27,243	-4.9
Ohio	89	91	138	3,113	6,069	-48.7	4,784	8,587	-44.3
Oklahoma	3	3	5	33	178	-81.2	81	275	-70.5
Pennsylvania Total	706	727	864	26,794	37,100	-27.8	39,530	50,122	-21.1
Anthracite (PA)	50	56	48	1,735	1,815	-4.4	2,518	2,345	7.4
Bituminous (PA)	657	670	816	25,059	35,285	-29.0	37,012	47,777	-22.5
Tennessee	9	10	11	211	319	-33.9	325	378	-14.0
Texas	352	380	486	13,380	17,692	-24.4	18,859	23,520	-19.8
Utah	206	211	239	9,157	11,102	-17.5	12,393	14,634	-15.3
Virginia	189	201	251	7,513	9,503	-20.9	10,408	12,860	-19.1
West Virginia Total	1,299	1,342	1,747	49,843	71,360	-30.2	71,420	95,448	-25.2
Northern (WV)	660	684	850	25,635	35,600	-28.0	36,876	47,849	-22.9
Southern (WV)	639	658	897	24,208	35,760	-32.3	34,544	47,599	-27.4
Wyoming	4,241	4,523	5,610	159,241	205,372	-22.5	229,210	285,844	-19.8
Appalachian Total	2,681	2,775	3,556	103,458	147,416	-29.8	148,700	198,818	-25.2
Interior Total	1,699	1,773	2,456	66,666	98,877	-32.6	94,754	133,776	-29.2
Western Total	5,868	6,271	7,743	223,802	287,299	-22.1	319,338	399,519	-20.1
East of Mississippi River	3,998	4,136	5,482	155,740	227,086	-31.4	223,165	307,088	-27.3
West of Mississippi River	6,249	6,683	8,273	238,187	306,507	-22.3	339,628	425,025	-20.1
Bituminous and Lignite	10,198	10,763	13,706	392,192	531,777	-26.2	560,275	729,769	-23.2
Anthracite	50	56	48	1,735	1,815	-4.4	2,518	2,345	7.4
U.S. Total	10,247	10,819	13,755	393,927	533,592	-26.2	562,793	732,114	-23.1
Railroad Cars Loaded	58,220	61,456	79,066	2,203,596	3,017,886	-27.0	3,174,181	4,180,282	-24.1

Source: Energy Information Administration



Weekly Electric Output

Volume 88 No. 39

OUTPUT FOR WEEK ENDED - Sep 26, 2020

Sep 30, 2020

The net available amount of electric energy distributed by the Total Electric Utility Industry* for the week ended Saturday, **Sep 26, 2020** was **69,966** gigawatthours (GWh), according to the Edison Electric Institute. This is equivalent to **178** on the weekly electric output index.

WEEKLY ELECTRIC OUTPUT BY GEOGRAPHIC DIVISION

(48 CONTIGUOUS STATES)

	Week Ended September 26		52 Weeks Ended September 26	
	GWh Output	% Increase Over Corresponding Week of 2019	GWh Output	% Increase Over Corresponding Period of 2019
New England	1,944	-9.8	115,011	-2.4
Mid-Atlantic	6,832	-15.9	414,517	-3.8
Central Industrial	10,713	-10.3	637,717	-4.2
West Central	5,945	-0.7	322,974	-2.3
Southeast	16,878	-17.7	989,373	-4.5
South Central	13,618	-19.4	757,294	-1.0
Rocky Mountain	5,979	9.4	287,085	2.1
Pacific Northwest	2,450	-3.3	155,324	-1.0
Pacific Southwest	5,607	-2.3	265,190	-1.4
Total United States	69,966	-11.8	3,944,485	-2.7

WEEKLY ELECTRIC OUTPUT IN PREVIOUS WEEKS--GWh

Week Ended	2020	Week Ended	2019	% Inc. (20/19)	52 Weeks Ended	2020	% Inc. (20/19)
Sep 05	84,215	Sep 07	83,846	0.4	Sep 05	3,967,323	-2.0
Sep 12	77,474	Sep 14	84,144	-7.9	Sep 12	3,960,653	-2.3
Sep 19	73,986	Sep 21	80,770	-8.4	Sep 19	3,953,869	-2.4
Sep 26	69,966	Sep 28	79,349	-11.8	Sep 26	3,944,485	-2.7
Sep 26	2,990,701	Sep 28	3,089,084	-3.2	YEAR TO DATE, FIRST 39 WEEKS		

WEEKLY ELECTRIC OUTPUT INDEX--TOTAL U.S.*

SEASONALLY ADJUSTED 1982 = 100

Week Ended	2020	Week Ended	2019	Week Ended	2018
Sep 05	178	Sep 07	183	Sep 08	173
Sep 12	187	Sep 14	200	Sep 15	182
Sep 19	182	Sep 21	195	Sep 22	196
Sep 26	178	Sep 28	198	Sep 29	180

* Excludes Alaska and Hawaii.

+ Includes investor-owned companies, cooperatives and government-owned utilities.

Copyright © 2020 Edison Electric Institute. All rights reserved.

**EEl WEEKLY ELECTRIC OUTPUT BY GEOGRAPHIC DIVISION
(48 CONTIGUOUS STATES)**

	Week Ended			NMA CUMULATIVE JANUARY WEEK ONE TO			52 Weeks Ended		
	26-Sep 2020 GWh Output	28-Sep 2019 GWh Output	% Increase Over Corresponding Week	26-Sep 2020 GWh Output	28-Sep 2019 GWh Output	% Increase Over Corresponding Week	26-Sep 2020 GWh Output	28-Sep 2019 GWh Output	% Increase Over Corresponding Week
New England	1,944	2,156	-9.8%	86,676	88,800	-2.4%	115,011	117,851	-2.4%
Mid-Atlantic	6,832	8,124	-15.9%	313,449	327,450	-4.3%	414,517	431,073	-3.8%
Central Industrial	10,713	11,938	-10.3%	482,365	505,123	-4.5%	637,717	665,924	-4.2%
West Central	5,945	5,988	-0.7%	243,876	250,772	-2.7%	322,974	330,677	-2.3%
Southeast	16,878	20,510	-17.7%	750,432	788,502	-4.8%	989,373	1,036,112	-4.5%
South Central	13,618	16,892	-19.4%	581,006	593,597	-2.1%	757,294	765,199	-1.0%
Rocky Mountain	5,979	5,467	9.4%	216,802	213,607	1.5%	287,085	281,191	2.1%
Pacific Northwest	2,450	2,532	-3.2%	114,568	116,744	-1.9%	155,324	156,832	-1.0%
Pacific Southwest	5,607	5,742	-2.4%	201,528	204,491	-1.4%	265,190	268,907	-1.4%
Total United States ^{1/}	<u>69,966</u>	<u>79,349</u>	-11.8%	<u>2,990,702</u>	<u>3,089,086</u>	<u>-3.2%</u>	3,944,485	4,053,766	-2.7%
Coal Regions Only ^{2/}	59,965	68,919	-13.0%	2,587,930	2,679,051	-3.4%	3,408,960	3,510,176	-2.9%

Notes: EEI output data are an estimate of electricity load made available for distribution derived as weekly net generation + purchases from non-utilities + net imports - exports - sales for resale. It is not meant to be a measure of electricity generation for the U.S. EEI survey data represent the majority of national distribution (large utilities, large government power projects, some independent and large municipal power projects). The remaining segment of the industry (smaller producers) is estimated. Non-utility generation is captured via direct sales to utilities.

^{1/} Excludes Alaska and Hawaii

^{2/} Excludes New England and Pacific regions

SOURCE: Edison Electric Institute (EEI), *Weekly Electric Output Report*.

AMERICAN IRON AND STEEL INSTITUTE
 25 Massachusetts Avenue, NW, Suite 800
 Washington, D.C. 20001

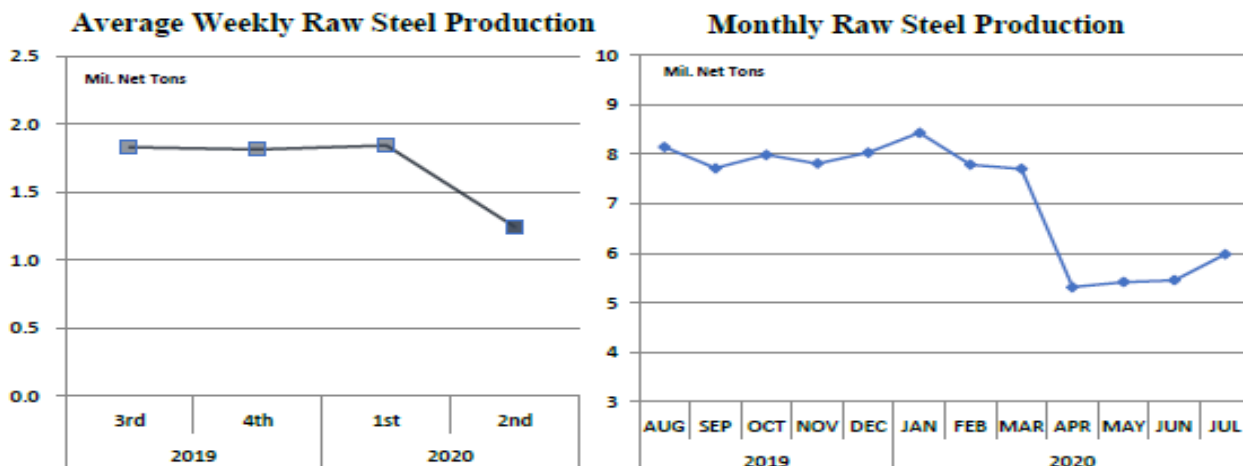
September 28, 2020

ESTIMATED WEEKLY RAW STEEL * PRODUCTION

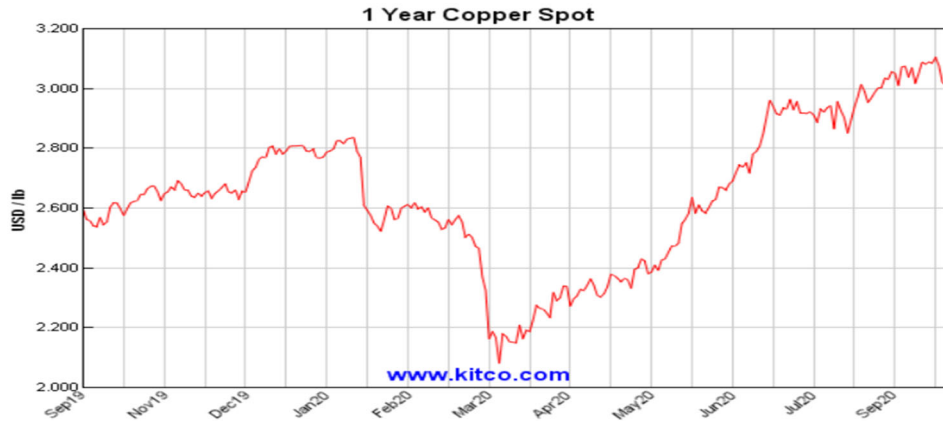
<u>Period</u>	<u>Thousand Net Tons</u>	<u>Percent Change from Previous Period</u>	<u>Percent Capability Utilization**</u>	<u>Production by District</u>		
				<u>Week Ending Sep 26</u>	<u>Week Ending Sep 19</u>	
<u>Week Ending</u>				North East	128	135
				Great Lakes	526	527
September 26, 2020	1,480	2.4	66.1	Midwest	163	169
September 26, 2019	1,801	-17.8	77.4	Southern	590	553
September 19, 2020	1,446	-0.9	64.5	Western	73	62
				Total	1,480	1,446
<u>Year-to-Date +</u>						
September 26, 2020	57,654	-20.1	65.8			
September 26, 2019	72,134	-	80.3			

*Raw steel production tonnage included in this report is estimated based on a sampling of steel producers (50% of domestic producers). Therefore, this report should be used primarily to assess production trends. The AISI production report "AIS 7," produced monthly and available by subscription, provides a more accurate summary of steel production based on data supplied by companies representing approximately 75% of U.S. production capacity plus includes revisions for previous months.

NOTE: Capacity for the third quarter 2020 is approximately 29.4 million net tons vs. 30.6 million net tons for the same period last year, and 29.1 million tons for the second quarter of 2020.



*Steel in the first solid state after melting suitable for further processing or sale, including ingots, steel for castings and strand or pressure cast blooms, slabs or other product forms. ** Based on tonnage capability to produce raw steel for a sustained full order book.



Source: Kitco website - www.kitco.com/connecting.html



Source: Kitco website - www.kitco.com/connecting.html

U.S. Rail Traffic¹
Week 39, 2020 – Ended September 26, 2020

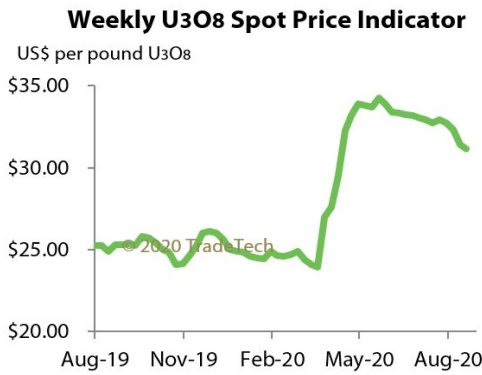
	This Week		Year-To-Date		
	Cars	vs 2019	Cumulative	Avg/wk ²	vs 2019
Total Carloads	224,146	-10.5%	8,335,530	213,732	-15.5%
Chemicals	30,078	-8.9%	1,193,917	30,613	-5.1%
Coal	58,220	-26.5%	2,233,682	57,274	-27.0%
Farm Products excl. Grain, and Food	15,666	3.1%	595,106	15,259	-1.7%
Forest Products	9,536	-5.3%	360,820	9,252	-6.4%
Grain	24,995	39.4%	822,547	21,091	-2.5%
Metallic Ores and Metals	19,695	-7.2%	695,272	17,827	-19.3%
Motor Vehicles and Parts	16,340	2.6%	471,662	12,094	-25.2%
Nonmetallic Minerals	29,977	-15.2%	1,162,782	29,815	-14.1%
Petroleum and Petroleum Products	10,501	-14.2%	431,978	11,076	-12.4%
Other	9,138	-11.6%	367,764	9,430	-1.4%
Total Intermodal Units	294,144	5.5%	9,747,872	249,945	-6.2%
Total Traffic	518,290	-2.1%	18,083,402	463,677	-10.7%

¹ Excludes U.S. operations of Canadian Pacific, CN and GMXT.

² Average per week figures may not sum to totals as a result of independent rounding.

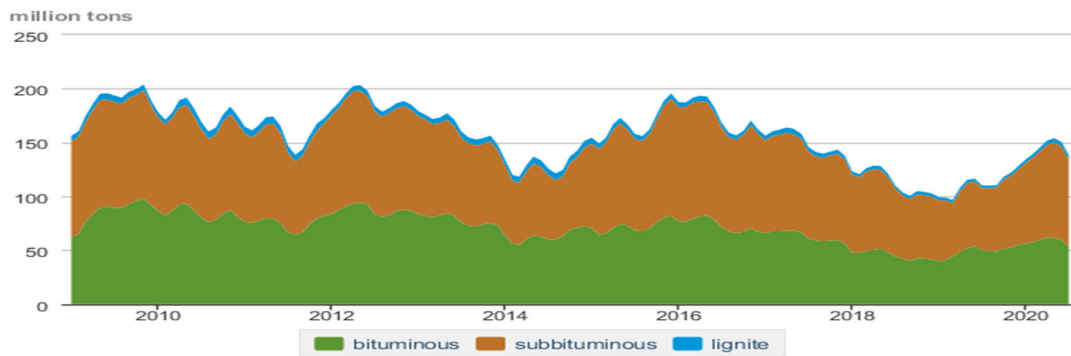
Source: AAR website - <https://www.aar.org/Pages/NEWS-and-EVENTS.aspx>

Trade Tech's and UX's Uranium Price Indicators



Sources: Trade Tech, Uranium Info Website – www.uranium.info ; Source: Ux Consulting Co., LLC – <http://www.uxc.com>

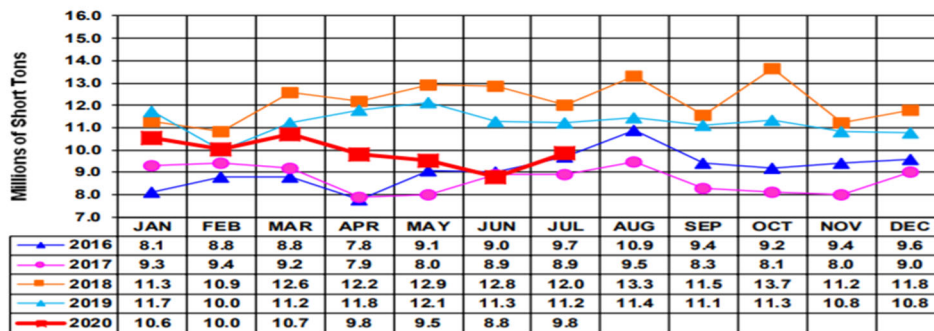
Coal stocks by type, January 2009 - July 2020



Source: U.S. Energy Information Administration

Source: Energy Information Administration, Electric Monthly Update

Coal and Coke Monthly Indicator for Internal U.S. Waterways



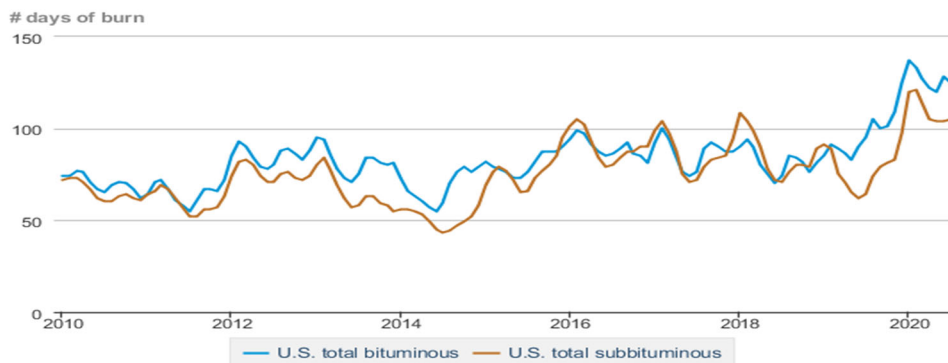
For the Internal U.S. Waterway Monthly Indicators, estimates for the most recent month are based on lock performance management data. The estimates will be superseded by actual data as it becomes available.

Source: Waterborne Commerce Statistics Center

	Week ending					Week ago
	08/28/20	09/04/20	09/11/20	09/18/20	09/25/20	change
Central Appalachia 12,500 Btu, 1.2 SO ₂	\$55.50	\$59.50	\$59.50	\$59.50	\$59.50	\$0.00
Northern Appalachia 13,000 Btu, < 3.0 SO ₂	\$42.45	\$42.45	\$42.45	\$42.45	\$42.45	\$0.00
Illinois Basin 11,800 Btu, 5.0 SO ₂	\$34.05	\$34.05	\$34.05	\$34.05	\$34.05	\$0.00
Powder River Basin 8,800 Btu, 0.8 SO ₂	\$11.60	\$11.70	\$11.70	\$11.70	\$11.70	\$0.00
Uinta Basin 11,700 Btu, 0.8 SO ₂	\$29.10	\$29.10	\$29.10	\$29.10	\$29.10	\$0.00

Source: Energy Information Administration (with permission from S&P Global), *Coal Market Report*

Days of burn by non-lignite coal rank, January 2010 - July 2020



Source: U.S. Energy Information Administration

Source: Energy Information Administration, *Electricity Monthly Update Report*

Temperature – heating & cooling degree days (week ending Sep 17)

Region	HDD Current	HDD deviation from:		CDD Current	CDD deviation from:	
		normal	last year		normal	last year
New England	33	6	-2	4	0	1
Middle Atlantic	22	3	13	5	-9	-12
E N Central	25	1	21	8	-7	-32
W N Central	36	7	27	12	-9	-48
South Atlantic	6	2	6	72	9	-22
E S Central	0	-5	0	75	24	-31
W S Central	1	-1	1	86	2	-33
Mountain	20	-14	6	41	0	-7
Pacific	2	-8	-3	42	10	3
United States	16	-1	10	40	2	-20

Note: HDD = heating degree day; CDD = cooling degree day

Source: National Oceanic and Atmospheric Administration

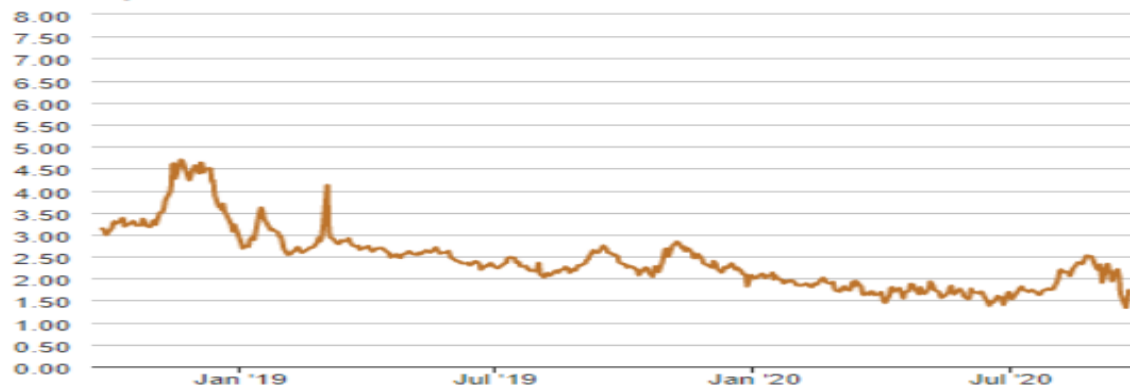
Source: Energy Information Administration, *Natural Gas Weekly Update*.

USGS Production of Selected Mineral Commodities	2020 Year to Date - 2nd Quarter	2019 Year to Date - 2nd Quarter	Percent Change
Aluminum, secondary (000 Mt.)	410.0	419.0	-2%
Cement (Mil. Mt.)	41.5	40.2	3%
Copper (000 Mt.)	590.0	615.0	-4%
Gold (Mt.)	91.9	100.0	-8%
Gypsum (Mil. Mt.)	8.5	8.7	-2%
Iron Ore (Mil. Mt.)	17.4	23.3	-25%
Lead (000 Mt.)	137.0	136.0	1%
Molybdenum (000 Mt.)	29.2	21.7	35%
Phosphate rock (Mil. Mt.)	11.9	11.3	5%
Sand & gravel, construction (Mil. Mt.)	428.0	431.0	-1%
Silver (Mt.)	490.0	482.0	2%
Soda ash (Mil. Mt.)	5.1	5.8	-12%
Stone, crushed (Mil. Mt.)	694.0	699.0	-1%
Zinc (000 Mt.)	308.0	362.0	-15%

Source: U.S. Geological Survey, Mineral Industry Surveys. Percent change based on USGS rounded numbers. 2020 data are preliminary estimates. W - withheld, N/A - not available

Natural gas spot prices (Henry Hub)

dollars per million British thermal units



 Source: Natural Gas Intelligence

Source: Energy Information Administration, *Natural Gas Weekly*.

EIA Coal Stocks and Average Number of Days of Burn (Power Sector)

Coal stocks and average number of days of burn for non-lignite coal by region (electric power sector)

Zone	Coal	July 2020		July 2019		% Change of Stocks	June 2020		% Change of Stocks
		Stocks (1000 tons)	Days of Burn	Stocks (1000 tons)	Days of Burn		Stocks (1000 tons)	Days of Burn	
Northeast	Bituminous	3,669	271	3,762	181	-2.5%	3,857	278	-4.9%
	Subbituminous	160	213	163	206	-2.3%	162	232	-1.2%
South	Bituminous	21,739	112	22,745	97	-4.4%	25,421	116	-14.5%
	Subbituminous	6,712	77	4,194	42	60.0%	7,789	82	-13.8%
Midwest	Bituminous	13,674	119	10,054	79	36.0%	14,156	117	-3.4%
	Subbituminous	29,169	128	21,373	76	36.5%	30,931	126	-5.7%
West	Bituminous	3,598	149	3,938	80	-8.6%	4,059	166	-11.4%
	Subbituminous	27,067	94	20,398	60	32.7%	29,708	93	-8.9%
U.S. Total	Bituminous	42,679	125	40,499	95	5.4%	47,493	128	-10.1%
	Subbituminous	63,108	105	46,129	64	36.8%	68,589	104	-8.0%

Source: Energy Information Administration, *Electricity Monthly Update*

EIA Working Natural Gas Underground Storage

Working gas in underground storage

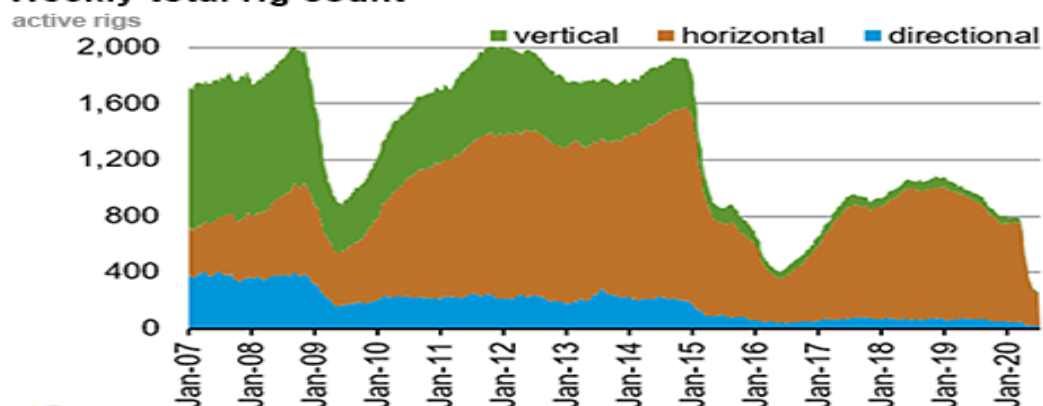
Region	Stocks billion cubic feet (Bcf)		
	2020-09-18	2020-09-11	change
East	851	825	26
Midwest	1,009	983	26
Mountain	225	221	4
Pacific	312	310	2
South Central	1,283	1,276	7
Total	3,680	3,614	66

Source: Form EIA-912, *Weekly Underground Natural Gas Storage Report*

Source: Energy Information Administration, *Natural Gas Weekly Update*

EIA Natural Gas Rig Count

Weekly total rig count



Source: Baker Hughes Co.

Source: Energy Information Administration, *Natural Gas Weekly Update*

EIA Oil and Natural Gas Rig Productivity

Region	New-well oil production per rig barrels/day			New-well gas production per rig thousand cubic feet/day		
	September 2020	October 2020	change	September 2020	October 2020	change
Anadarko	1,070	1,016	(54)	6,801	6,461	(340)
Appalachia	171	172	1	25,664	26,177	513
Bakken	2,368	2,200	(168)	3,207	2,944	(263)
Eagle Ford	2,383	2,430	47	8,416	8,584	168
Haynesville	20	20	-	11,268	11,270	2
Niobrara	2,019	2,029	10	5,545	5,556	11
Permian	1,114	1,192	78	2,102	2,144	42
Rig-weighted average	962	993	31	7,491	7,438	(53)

Source: Energy Information Administration, *Drilling Productivity Report*