

---

# NATIONAL MINING ASSOCIATION

## *Weekly Statistical Summary*

---

**October 9, 2020 Edition**  
**(Data for Week Ending October 3, 2020)**

**Prepared by**  
**National Mining Association**



101 Constitution Avenue, NW, Suite 500 East  
Washington, DC, 20001  
Phone (202) 463-2600  
<http://www.nma.org>

# NMA Weekly Statistical Summary

Vol. 58, No. 40  
Dated 10/09/20

## PRODUCTION, CONSUMPTION & TRADE

	Week Ended			* Cumulative Jan 1 to		
	10/03/20	10/05/19	% Chng	10/03/20	10/03/19	% Chng
<b>EIA Coal Production (000 Tons):</b>						
Week Ended/Year to Date	10,344	13,416	-22.9%	404,272	547,100	-26.1%
52 Weeks Ended	559,722	730,331	-23.4%			
AAR Coal Rail Cars Loaded:	58,722	76,970	-23.7%	2,262,318	3,095,435	-26.9%
Coal Production Month Ended - Sep	<b>September 20/19</b> 45,094	<b>% Chng</b> 58,597	<b>% Chng</b> -23.0%	<b>Jan - September 20/19</b> 399,819	<b>% Chng</b> 541,059	<b>% Chng</b> -26.1%
<b>DOC Coal Trade (000 Tons)</b>						
<b>Exports:</b>	<b>August 20/19</b>			<b>Jan - August 20/19</b>		
			<b>% Chng</b>			<b>% Chng</b>
Metallurgical	2,915	5,022	-42.0%	27,312	37,683	-27.5%
Steam Bit. *	1,599	2,677	-40.3%	17,150	26,821	-36.1%
Lignite	6	5	20.0%	60	60	0.0%
Anthracite	7	5	40.0%	153	196	-21.9%
<b>Total</b>	<b>4,527</b>	<b>7,709</b>	<b>-41.3%</b>	<b>44,675</b>	<b>64,760</b>	<b>-31.0%</b>
<b>Imports:</b>	314	519	-39.5%	3,272	4,323	-24.3%
	<b>Week Ended</b>			<b>Cumulative Week 1 to</b>		
	<b>10/03/20</b>	<b>10/05/19</b>	<b>% Chng</b>	<b>10/03/20</b>	<b>10/05/19</b>	<b>% Chng</b>
<b>EI Electric Total Output (Mil. Kwh)</b>	70,736	80,103	-11.7%	3,061,437	3,169,187	-3.4%
<b>EI Coal Region Output (Mil. Kwh)</b>	59,923	70,562	-15.1%	2,647,853	2,749,613	-3.7%
<b>AISI Raw Steel Output (000 Tons)</b>	1,484	1,803	-17.7%	59,444	73,936	-19.6%

## EIA (S&P Global) AVERAGE COAL & NATURAL GAS SPOT PRICES Dollars Per Short Ton

Average Coal Spot Prices (\$/Short Ton)	Week Ending			Natural Gas Spot Prices (\$/MMBtu)	
	10/02/20	09/25/20	% Chng	Wed.	09/30/20
Central App, 12,500 Btu, 1.2 SO <sub>2</sub>	\$59.50	\$59.50	0.0%	Henry Hub	1.63
Northern App, 13,000 Btu, < 3.0 SO <sub>2</sub>	42.45	42.45	0.0%	New York	0.95
Illinois Basin, 11,800, 5.0 SO <sub>2</sub>	34.05	34.05	0.0%	Chicago	1.45
Powder River Basin, 8,800 Btu 0.8 SO <sub>2</sub>	11.75	11.70	0.4%	Cal.Comp.Avg.	3.47
Uinta Basin, 11,700 Btu, 0.8 SO <sub>2</sub>	29.10	29.10	0.0%		

Coal exports and Imports are "as reported" (not revised); \*Steam excludes lignite & anthracite. All data in this report are preliminary and subject to revision. r/ revised.

Sources: EIA; Edison Electric Institute; American Iron & Steel Institute; Association of American Railroads; Dept. of Commerce; S&P Global; NGI's Daily Gas Price Index



**NMA**  
THE AMERICAN RESOURCE

National Mining Association Web Site: [http:// www.nma.org](http://www.nma.org)

<b>EIA Estimated Weekly U.S. Coal Production Overview</b>									
Coal-Producing Region & State (thousand short tons)	Week Ended			Year to Date			52 Weeks Ended		
	10/3/2020 (week 40)	9/26/2020 (week 39)	10/5/2019 (week 40)	10/3/2020	10/3/2019	% Change	10/3/2020	10/5/2019	% Change
Alabama	203	206	245	9,149	11,246	-18.6	11,959	14,725	-18.8
Alaska	18	16	19	737	741	-0.5	965	1,018	-5.2
Arizona	.	.	12	.	3,843	-100.0	.	5,343	.
Colorado	182	183	236	7,427	10,107	-26.5	10,123	13,283	-23.8
Illinois	570	584	774	24,317	37,072	-34.4	32,932	48,757	-32.5
Indiana	391	397	569	15,822	24,775	-36.1	22,446	33,388	-32.8
<b>Kentucky Total</b>	<b>441</b>	<b>449</b>	<b>631</b>	<b>17,814</b>	<b>28,741</b>	<b>-38.0</b>	<b>25,011</b>	<b>38,070</b>	<b>-34.3</b>
Eastern (KY)	149	159	232	6,299	11,206	-43.8	8,901	15,098	-41.0
Western (KY)	292	290	399	11,516	17,534	-34.3	16,110	22,972	-29.9
Louisiana	25	25	29	882	1,222	-27.8	1,191	1,501	-20.7
Maryland	23	23	28	913	1,132	-19.3	1,244	1,467	-15.2
Mississippi	45	47	50	1,924	2,126	-9.5	2,483	2,761	-10.1
Missouri	3	3	3	116	150	-22.4	155	212	-26.9
Montana	559	566	705	21,281	26,438	-19.5	29,122	36,777	-20.8
New Mexico	199	199	270	8,138	11,267	-27.8	11,330	15,051	-24.7
North Dakota	484	456	551	19,263	20,257	-4.9	25,845	27,214	-5.0
Ohio	82	89	133	3,195	6,204	-48.5	4,733	8,527	-44.5
Oklahoma	2	3	4	35	183	-80.6	79	271	-70.8
<b>Pennsylvania Total</b>	<b>737</b>	<b>706</b>	<b>969</b>	<b>27,531</b>	<b>38,026</b>	<b>-27.6</b>	<b>39,299</b>	<b>50,103</b>	<b>-21.6</b>
Anthracite (PA)	52	50	58	1,788	1,869	-4.4	2,512	2,363	6.3
Bituminous (PA)	685	657	911	25,744	36,157	-28.8	36,787	47,739	-22.9
Tennessee	9	9	9	219	329	-33.2	324	383	-15.4
Texas	356	352	445	13,736	18,151	-24.3	18,769	23,512	-20.2
Utah	218	206	251	9,374	11,348	-17.4	12,359	14,615	-15.4
Virginia	196	189	234	7,708	9,743	-20.9	10,370	12,837	-19.2
<b>West Virginia Total</b>	<b>1,282</b>	<b>1,299</b>	<b>1,712</b>	<b>51,125</b>	<b>73,080</b>	<b>-30.0</b>	<b>70,990</b>	<b>95,318</b>	<b>-25.5</b>
Northern (WV)	655	660	877	26,290	36,464	-27.9	36,654	47,795	-23.3
Southern (WV)	627	639	835	24,835	36,616	-32.2	34,336	47,523	-27.7
Wyoming	4,321	4,241	5,537	163,562	210,921	-22.5	227,995	285,199	-20.1
<b>Appalachian Total</b>	<b>2,681</b>	<b>2,681</b>	<b>3,562</b>	<b>106,139</b>	<b>150,966</b>	<b>-29.7</b>	<b>147,819</b>	<b>198,458</b>	<b>-25.5</b>
<b>Interior Total</b>	<b>1,683</b>	<b>1,699</b>	<b>2,273</b>	<b>68,349</b>	<b>101,213</b>	<b>-32.5</b>	<b>94,164</b>	<b>133,374</b>	<b>-29.4</b>
<b>Western Total</b>	<b>5,981</b>	<b>5,868</b>	<b>7,580</b>	<b>229,783</b>	<b>294,921</b>	<b>-22.1</b>	<b>317,738</b>	<b>398,500</b>	<b>-20.3</b>
<b>East of Mississippi River</b>	<b>3,978</b>	<b>3,998</b>	<b>5,354</b>	<b>159,718</b>	<b>232,474</b>	<b>-31.3</b>	<b>221,789</b>	<b>306,336</b>	<b>-27.6</b>
<b>West of Mississippi River</b>	<b>6,366</b>	<b>6,249</b>	<b>8,062</b>	<b>244,553</b>	<b>314,626</b>	<b>-22.3</b>	<b>337,932</b>	<b>423,996</b>	<b>-20.3</b>
Bituminous and Lignite	10,292	10,198	13,357	402,484	545,231	-26.2	557,210	727,968	-23.5
Anthracite	52	50	58	1,788	1,869	-4.4	2,512	2,363	6.3
<b>U.S. Total</b>	<b>10,344</b>	<b>10,247</b>	<b>13,416</b>	<b>404,272</b>	<b>547,100</b>	<b>-26.1</b>	<b>559,722</b>	<b>730,331</b>	<b>-23.4</b>
Railroad Cars Loaded	58,722	58,220	76,970	2,262,318	3,095,435	-26.9	3,155,933	4,168,313	-24.3

Source: Energy Information Administration



## Weekly Electric Output

Volume 88 No. 40

### OUTPUT FOR WEEK ENDED - Oct 03, 2020

Oct 07, 2020

The net available amount of electric energy distributed by the Total Electric Utility Industry\* for the week ended Saturday, **Oct 03, 2020** was **70,736** gigawatthours (GWh), according to the Edison Electric Institute. This is equivalent to **183** on the weekly electric output index.

### WEEKLY ELECTRIC OUTPUT BY GEOGRAPHIC DIVISION

(48 CONTIGUOUS STATES)

	Week Ended October 03		52 Weeks Ended October 03	
	GWh Output	% Increase Over Corresponding Week of 2019	GWh Output	% Increase Over Corresponding Period of 2019
New England	2,124	5.0	115,111	-2.3
Mid-Atlantic	7,268	-6.9	413,980	-4.0
Central Industrial	10,498	-14.2	635,985	-4.5
West Central	5,659	-7.6	322,509	-2.5
Southeast	17,628	-21.9	984,428	-5.1
South Central	13,341	-19.7	754,025	-1.6
Rocky Mountain	5,529	5.9	287,394	2.3
Pacific Northwest	2,493	-8.4	155,096	-1.1
Pacific Southwest	6,196	29.2	266,590	-0.6
Total United States	70,736	-11.7	3,935,118	-3.0

### WEEKLY ELECTRIC OUTPUT IN PREVIOUS WEEKS--GWh

Week Ended	2020	Week Ended	2019	% Inc. (20/19)	52 Weeks Ended	2020	% Inc. (20/19)
Sep 12	77,474	Sep 14	84,144	-7.9	Sep 12	3,960,653	-2.3
Sep 19	73,986	Sep 21	80,770	-8.4	Sep 19	3,953,869	-2.4
Sep 26	69,966	Sep 28	79,349	-11.8	Sep 26	3,944,485	-2.7
Oct 03	70,736	Oct 05	80,103	-11.7	Oct 03	3,935,119	-3.0
<b>Oct 03</b>	<b>3,061,437</b>	<b>Oct 05</b>	<b>3,169,187</b>	<b>-3.4</b>	<b>YEAR TO DATE, FIRST 40 WEEKS</b>		

### WEEKLY ELECTRIC OUTPUT INDEX--TOTAL U.S.\* SEASONALLY ADJUSTED 1982 = 100

Week Ended	2020	Week Ended	2019	Week Ended	2018
Sep 12	187	Sep 14	200	Sep 15	182
Sep 19	182	Sep 21	195	Sep 22	196
Sep 26	178	Sep 28	198	Sep 29	180
Oct 03	183	Oct 05	205	Oct 06	194

\* Excludes Alaska and Hawaii.

+ Includes investor-owned companies, cooperatives and government-owned utilities.

Copyright © 2020 Edison Electric Institute. All rights reserved.

**EEI WEEKLY ELECTRIC OUTPUT BY GEOGRAPHIC DIVISION  
(48 CONTIGUOUS STATES)**

	Week Ended			NMA CUMULATIVE JANUARY WEEK ONE TO			52 Weeks Ended		
	3-Oct 2020 GWh Output	5-Oct 2019 GWh Output	% Increase Over Corresponding Week	3-Oct 2020 GWh Output	5-Oct 2019 GWh Output	% Increase Over Corresponding Week	3-Oct 2020 GWh Output	5-Oct 2019 GWh Output	% Increase Over Corresponding Week
<b>New England</b>	2,124	2,024	4.9%	<b>88,800</b>	<b>90,824</b>	<b>-2.2%</b>	115,111	117,821	-2.3%
<b>Mid-Atlantic</b>	7,268	7,804	-6.9%	<b>320,717</b>	<b>335,254</b>	<b>-4.3%</b>	413,980	431,091	-4.0%
<b>Central Industrial</b>	10,498	12,231	-14.2%	<b>492,863</b>	<b>517,354</b>	<b>-4.7%</b>	635,985	666,184	-4.5%
<b>West Central</b>	5,659	6,124	-7.6%	<b>249,535</b>	<b>256,896</b>	<b>-2.9%</b>	322,509	330,928	-2.5%
<b>Southeast</b>	17,628	22,574	-21.9%	<b>768,060</b>	<b>811,076</b>	<b>-5.3%</b>	984,428	1,036,860	-5.1%
<b>South Central</b>	13,341	16,610	-19.7%	<b>594,347</b>	<b>610,207</b>	<b>-2.6%</b>	754,025	766,418	-1.6%
<b>Rocky Mountain</b>	5,529	5,219	5.9%	<b>222,331</b>	<b>218,826</b>	<b>1.6%</b>	287,394	281,011	2.3%
<b>Pacific Northwest</b>	2,493	2,721	-8.4%	<b>117,061</b>	<b>119,465</b>	<b>-2.0%</b>	155,096	156,891	-1.1%
<b>Pacific Southwest</b>	6,196	4,796	29.2%	<b>207,724</b>	<b>209,287</b>	<b>-0.7%</b>	266,590	268,286	-0.6%
<b>Total United States</b> <sup>1/</sup>	70,736	80,103	-11.7%	<b>3,061,438</b>	<b>3,169,189</b>	<b>-3.4%</b>	3,935,118	4,055,490	-3.0%
<b>Coal Regions Only</b> <sup>2/</sup>	59,923	70,562	-15.1%	<b>2,647,853</b>	<b>2,749,613</b>	<b>-3.7%</b>	3,398,321	3,512,492	-3.3%

Notes: EEI output data are an estimate of electricity load made available for distribution derived as weekly net generation + purchases from non-utilities + net imports - exports - sales for resale. It is not meant to be a measure of electricity generation for the U.S. EEI survey data represent the majority of national distribution (large utilities, large government power projects, some independent and large municipal power projects). The remaining segment of the industry (smaller producers) is estimated. Non-utility generation is captured via direct sales to utilities.

<sup>1/</sup> Excludes Alaska and Hawaii

<sup>2/</sup> Excludes New England and Pacific regions

SOURCE: Edison Electric Institute (EEI), *Weekly Electric Output Report*.

AMERICAN IRON AND STEEL INSTITUTE  
 25 Massachusetts Avenue, NW, Suite 800  
 Washington, D.C. 20001

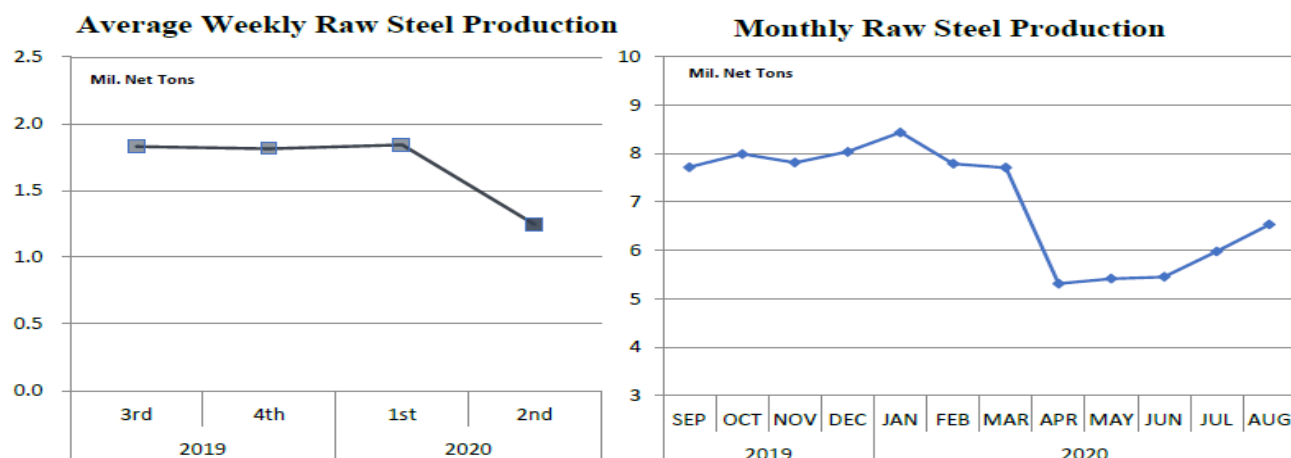
October 5, 2020

**ESTIMATED WEEKLY RAW STEEL \* PRODUCTION**

<u>Period</u>	<u>Thousand Net Tons</u>	<u>Percent Change from Previous Period</u>	<u>Percent Capability Utilization**</u>	<u>Production by District</u>		
				<u>Week Ending Oct. 3</u>	<u>Week Ending Sep 26</u>	
<b><u>Week Ending</u></b>				North East	144	128
				Great Lakes	531	526
October 3, 2020	1,484	0.3	66.6	Midwest	168	163
October 3, 2019	1,803	-17.7	77.7	Southern	575	590
September 26, 2020	1,480	2.4	66.1	Western	66	73
				<b>Total</b>	<b>1,484</b>	<b>1,480</b>
<b><u>Year-to-Date +</u></b>						
October 3, 2020	59,444	-19.6	66.2			
October 3, 2019	73,936	-	80.3			

\*Raw steel production tonnage included in this report is estimated based on a sampling of steel producers (50% of domestic producers). Therefore, this report should be used primarily to assess production trends. The AISI production report "AIS 7," produced monthly and available by subscription, provides a more accurate summary of steel production based on data supplied by companies representing approximately 75% of U.S. production capacity plus includes revisions for previous months.

NOTE: Capacity for the fourth quarter 2020 is approximately 29.1 million net tons vs. 30.4 million net tons for the same period last year, and 29.4 million tons for the third quarter of 2020.



\*Steel in the first solid state after melting suitable for further processing or sale, including ingots, steel for castings and strand or pressure cast blooms, slabs or other product forms. \*\* Based on tonnage capability to produce raw steel for a sustained full order book.



Source: Kitco website - [www.kitco.com/connecting.html](http://www.kitco.com/connecting.html)



Source: Kitco website - [www.kitco.com/connecting.html](http://www.kitco.com/connecting.html)

**U.S. Rail Traffic<sup>1</sup>**  
 Week 40, 2020 – Ended October 3, 2020

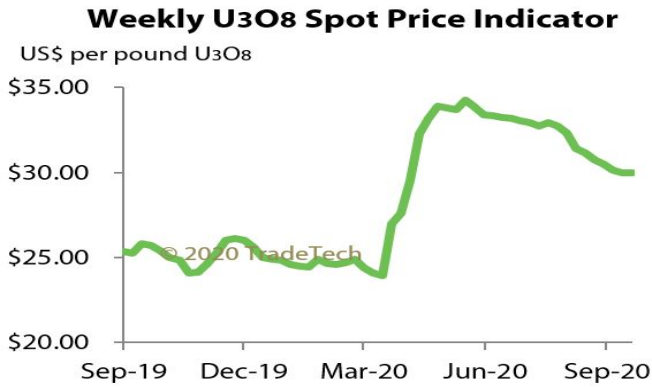
	This Week		Year-To-Date		
	Cars	vs 2019	Cumulative	Avg/wk <sup>2</sup>	vs 2019
<b>Total Carloads</b>	<b>232,273</b>	<b>-5.9%</b>	<b>8,567,803</b>	<b>214,195</b>	<b>-15.3%</b>
Chemicals	31,377	-3.8%	1,225,294	30,632	-5.1%
Coal	58,722	-23.5%	2,292,404	57,310	-26.9%
Farm Products excl. Grain, and Food	16,261	1.0%	611,367	15,284	-1.7%
Forest Products	9,641	-1.0%	370,461	9,262	-6.3%
Grain	26,534	34.8%	849,081	21,227	-1.7%
Metallic Ores and Metals	21,669	14.8%	716,941	17,924	-18.5%
Motor Vehicles and Parts	16,392	4.1%	488,054	12,201	-24.5%
Nonmetallic Minerals	30,483	-12.9%	1,193,265	29,832	-14.0%
Petroleum and Petroleum Products	10,428	-17.2%	442,406	11,060	-12.5%
Other	10,766	11.3%	378,530	9,463	-1.1%
<b>Total Intermodal Units</b>	<b>286,488</b>	<b>6.9%</b>	<b>10,034,360</b>	<b>250,859</b>	<b>-5.9%</b>
<b>Total Traffic</b>	<b>518,761</b>	<b>0.8%</b>	<b>18,602,163</b>	<b>465,054</b>	<b>-10.4%</b>

<sup>1</sup> Excludes U.S. operations of Canadian Pacific, CN and GMXT.

<sup>2</sup> Average per week figures may not sum to totals as a result of independent rounding.

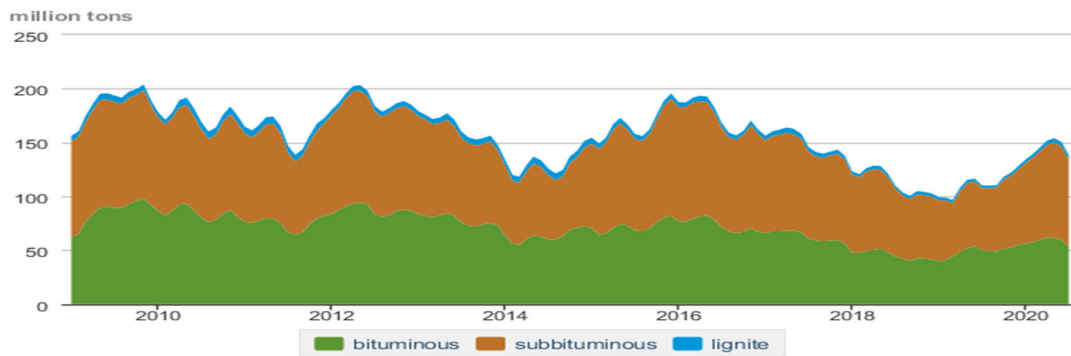
Source: AAR website - <https://www.aar.org/Pages/NEWS-and-EVENTS.aspx>

### Trade Tech's and UX's Uranium Price Indicators



Sources: Trade Tech, Uranium Info Website – [www.uranium.info](http://www.uranium.info) ; Source: Ux Consulting Co., LLC – <http://www.uxc.com>

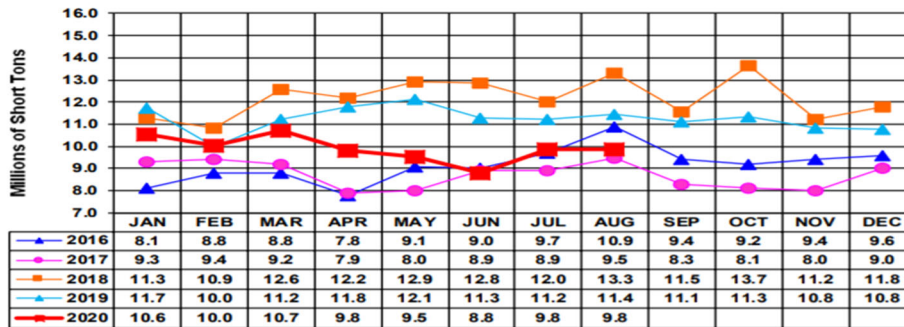
#### Coal stocks by type, January 2009 - July 2020



Source: U.S. Energy Information Administration

Source: Energy Information Administration, Electric Monthly Update

#### Coal and Coke Monthly Indicator for Internal U.S. Waterways



For the Internal U.S. Waterway Monthly Indicators, estimates for the most recent month are based on lock performance management data. The estimates will be superseded by actual data as it becomes available.

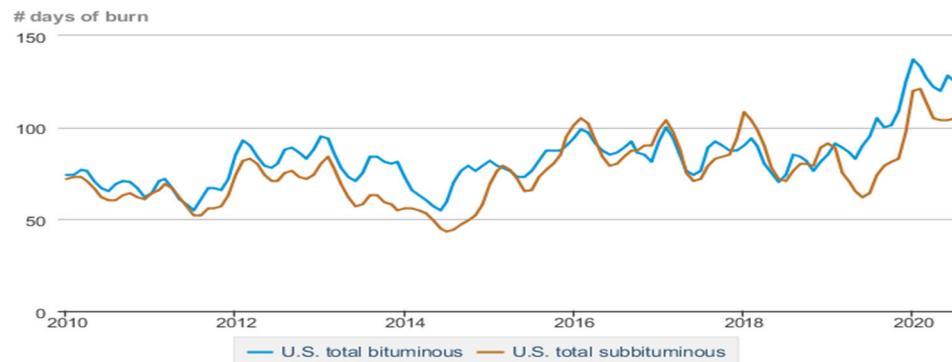
Source: Waterborne Commerce Statistics Center

Average weekly coal commodity spot prices  
dollars per short ton

	Week ending					Week ago
	09/04/20	09/11/20	09/18/20	09/25/20	10/02/20	change
Central Appalachia 12,500 Btu, 1.2 SO <sub>2</sub>	\$59.50	\$59.50	\$59.50	\$59.50	\$59.50	\$0.00
Northern Appalachia 13,000 Btu, < 3.0 SO <sub>2</sub>	\$42.45	\$42.45	\$42.45	\$42.45	\$42.45	\$0.00
Illinois Basin 11,800 Btu, 5.0 SO <sub>2</sub>	\$34.05	\$34.05	\$34.05	\$34.05	\$34.05	\$0.00
Powder River Basin 8,800 Btu, 0.8 SO <sub>2</sub>	\$11.70	\$11.70	\$11.70	\$11.70	\$11.75	\$0.05
Uinta Basin 11,700 Btu, 0.8 SO <sub>2</sub>	\$29.10	\$29.10	\$29.10	\$29.10	\$29.10	\$0.00

Source: Energy Information Administration (with permission from S&P Global), *Coal Market Report*

Days of burn by non-lignite coal rank, January 2010 - July 2020



Source: U.S. Energy Information Administration

Source: Energy Information Administration, *Electricity Monthly Update Report*

Temperature – heating & cooling degree days (week ending Sep 24)

Region	HDD Current	HDD deviation from:		CDD Current	CDD deviation from:	
		normal	last year		normal	last year
New England	69	27	46	0	-1	-12
Middle Atlantic	56	24	44	0	-8	-17
E N Central	52	16	46	0	-9	-37
W N Central	30	-9	20	10	-3	-33
South Atlantic	34	23	32	40	-14	-25
E S Central	24	13	23	21	-19	-51
W S Central	5	3	5	44	-27	-71
Mountain	10	-33	-19	49	16	21
Pacific	4	-10	-2	37	11	11
United States	32	7	24	24	-6	-24

Note: HDD = heating degree day; CDD = cooling degree day

Source: National Oceanic and Atmospheric Administration

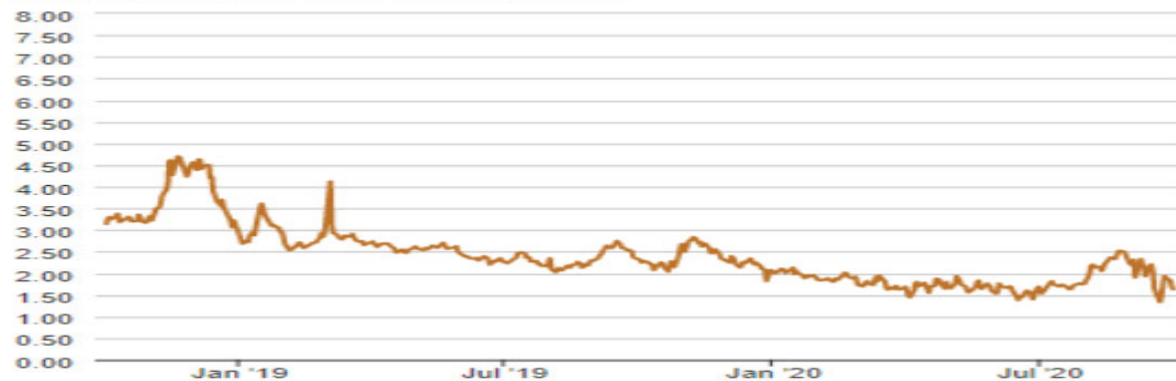
Source: Energy Information Administration, *Natural Gas Weekly Update*.

USGS Production of Selected Mineral Commodities	2020 Year to Date - 2nd Quarter	2019 Year to Date - 2nd Quarter	Percent Change
Aluminum, secondary (000 Mt.)	410.0	419.0	-2%
Cement (Mil. Mt.)	41.5	40.2	3%
Copper (000 Mt.)	590.0	615.0	-4%
Gold (Mt.)	91.9	100.0	-8%
Gypsum (Mil. Mt.)	8.5	8.7	-2%
Iron Ore (Mil. Mt.)	17.4	23.3	-25%
Lead (000 Mt.)	137.0	136.0	1%
Molybdenum (000 Mt.)	29.2	21.7	35%
Phosphate rock (Mil. Mt.)	11.9	11.3	5%
Sand & gravel, construction (Mil. Mt.)	428.0	431.0	-1%
Silver (Mt.)	490.0	482.0	2%
Soda ash (Mil. Mt.)	5.1	5.8	-12%
Stone, crushed (Mil. Mt.)	694.0	699.0	-1%
Zinc (000 Mt.)	308.0	362.0	-15%

Source: U.S. Geological Survey, Mineral Industry Surveys. Percent change based on USGS rounded numbers. 2020 data are preliminary estimates. W - withheld, N/A - not available

### Natural gas spot prices (Henry Hub)

dollars per million British thermal units



eia Source: Natural Gas Intelligence

Source: Energy Information Administration, *Natural Gas Weekly*.

### EIA Coal Stocks and Average Number of Days of Burn (Power Sector)

Coal stocks and average number of days of burn for non-lignite coal by region (electric power sector)

Zone	Coal	July 2020		July 2019		% Change of Stocks	June 2020		% Change of Stocks
		Stocks (1000 tons)	Days of Burn	Stocks (1000 tons)	Days of Burn		Stocks (1000 tons)	Days of Burn	
Northeast	Bituminous	3,669	271	3,762	181	-2.5%	3,857	278	-4.9%
	Subbituminous	160	213	163	206	-2.3%	162	232	-1.2%
South	Bituminous	21,739	112	22,745	97	-4.4%	25,421	116	-14.5%
	Subbituminous	6,712	77	4,194	42	60.0%	7,789	82	-13.8%
Midwest	Bituminous	13,674	119	10,054	79	36.0%	14,156	117	-3.4%
	Subbituminous	29,169	128	21,373	76	36.5%	30,931	126	-5.7%
West	Bituminous	3,598	149	3,938	80	-8.6%	4,059	166	-11.4%
	Subbituminous	27,067	94	20,398	60	32.7%	29,708	93	-8.9%
U.S. Total	Bituminous	42,679	125	40,499	95	5.4%	47,493	128	-10.1%
	Subbituminous	63,108	105	46,129	64	36.8%	68,589	104	-8.0%

Source: Energy Information Administration, *Electricity Monthly Update*

### EIA Working Natural Gas Underground Storage

**Working gas in underground storage**

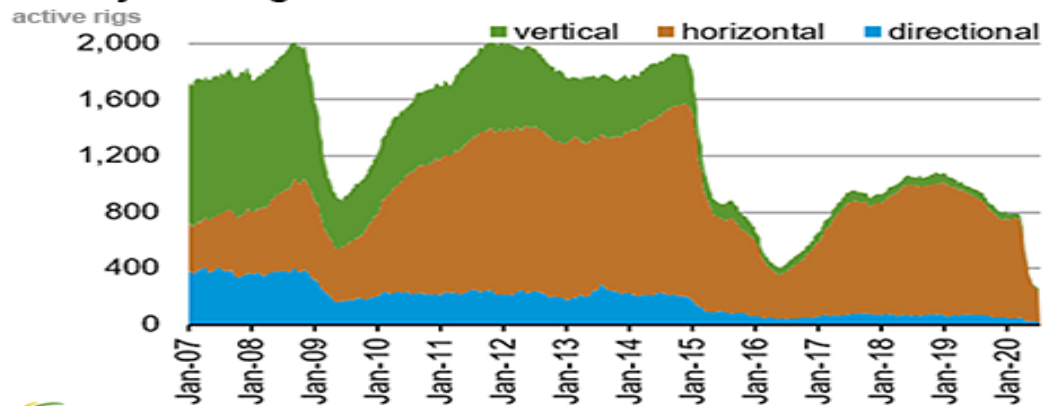
Region	Stocks billion cubic feet (Bcf)		
	2020-09-25	2020-09-18	change
East	872	851	21
Midwest	1,033	1,009	24
Mountain	231	225	6
Pacific	316	312	4
South Central	1,304	1,283	21
<b>Total</b>	<b>3,756</b>	<b>3,680</b>	<b>76</b>

Source: Form EIA-912, *Weekly Underground Natural Gas Storage Report*

Source: Energy Information Administration, *Natural Gas Weekly Update*

### EIA Natural Gas Rig Count

#### Weekly total rig count



Source: Baker Hughes Co.

Source: Energy Information Administration, *Natural Gas Weekly Update*

### EIA Oil and Natural Gas Rig Productivity

Region	New-well oil production per rig barrels/day			New-well gas production per rig thousand cubic feet/day		
	September 2020	October 2020	change	September 2020	October 2020	change
Anadarko	1,070	1,016	(54)	6,801	6,461	(340)
Appalachia	171	172	1	25,664	26,177	513
Bakken	2,368	2,200	(168)	3,207	2,944	(263)
Eagle Ford	2,383	2,430	47	8,416	8,584	168
Haynesville	20	20	-	11,268	11,270	2
Niobrara	2,019	2,029	10	5,545	5,556	11
Permian	1,114	1,192	78	2,102	2,144	42
Rig-weighted average	962	993	31	7,491	7,438	(53)

Source: Energy Information Administration, *Drilling Productivity Report*