

---

# NATIONAL MINING ASSOCIATION

## *Weekly Statistical Summary*

---

**October 16, 2020 Edition**  
**(Data for Week Ending October 10, 2020)**

**Prepared by**  
**National Mining Association**



101 Constitution Avenue, NW, Suite 500 East  
Washington, DC, 20001  
Phone (202) 463-2600  
<http://www.nma.org>

# NMA Weekly Statistical Summary

Vol. 58, No. 41  
Dated 10/16/20

## PRODUCTION, CONSUMPTION & TRADE

	Week Ended			* Cumulative Jan 1 to		
	10/10/20	10/12/19	% Chng	10/10/20	10/10/19	% Chng
<b>EIA Coal Production (000 Tons):</b>						
Week Ended/Year to Date	11,000	12,890	-14.7%	415,272	560,140	-25.9%
52 Weeks Ended	557,832	728,454	-23.4%			
AAR Coal Rail Cars Loaded:	62,229	73,902	-15.8%	2,324,547	3,170,198	-26.7%
Coal Production Month Ended - Sep	<b>September 20/19</b> 45,094	<b>% Chng</b> 58,597	<b>% Chng</b> -23.0%	<b>Jan - September 20/19</b> 399,819	<b>% Chng</b> 541,059	<b>% Chng</b> -26.1%
<b>DOC Coal Trade (000 Tons)</b>						
<b>Exports:</b>	<b>August 20/19</b>		<b>% Chng</b>	<b>Jan - August 20/19</b>		<b>% Chng</b>
Metallurgical	2,915	5,022	-42.0%	27,312	37,683	-27.5%
Steam Bit. *	1,599	2,677	-40.3%	17,150	26,821	-36.1%
Lignite	6	5	20.0%	60	60	0.0%
Anthracite	7	5	40.0%	153	196	-21.9%
<b>Total</b>	<b>4,527</b>	<b>7,709</b>	<b>-41.3%</b>	<b>44,675</b>	<b>64,760</b>	<b>-31.0%</b>
<b>Imports:</b>	314	519	-39.5%	3,272	4,323	-24.3%
	<b>Week Ended</b>			<b>Cumulative Week 1 to</b>		
	<b>10/10/20</b>	<b>10/12/19</b>	<b>% Chng</b>	<b>10/10/20</b>	<b>10/12/19</b>	<b>% Chng</b>
<b>EI Electric Total Output (Mil. Kwh)</b>	69,806	70,459	-0.9%	3,131,243	3,239,646	-3.3%
<b>EI Coal Region Output (Mil. Kwh)</b>	60,041	60,684	-1.1%	2,707,894	2,810,297	-3.6%
<b>AISI Raw Steel Output (000 Tons)</b>	1,502	1,805	-16.8%	60,946	75,741	-19.5%

## EIA (S&P Global) AVERAGE COAL & NATURAL GAS SPOT PRICES Dollars Per Short Ton

Average Coal Spot Prices (\$/Short Ton)	Week Ending			Natural Gas Spot Prices (\$/MMBtu)	
	10/09/20	10/02/20	% Chng	Wed.	10/07/20
Central App, 12,500 Btu, 1.2 SO <sub>2</sub>	\$59.50	\$59.50	0.0%	Henry Hub	2.03
Northern App, 13,000 Btu, < 3.0 SO <sub>2</sub>	42.45	42.45	0.0%	New York	1.15
Illinois Basin, 11,800, 5.0 SO <sub>2</sub>	34.05	34.05	0.0%	Chicago	1.58
Powder River Basin, 8,800 Btu 0.8 SO <sub>2</sub>	11.70	11.70	0.0%	Cal.Comp.Avg.	2.63
Uinta Basin, 11,700 Btu, 0.8 SO <sub>2</sub>	29.10	29.10	0.0%		

Coal exports and Imports are "as reported" (not revised); \*Steam excludes lignite & anthracite. All data in this report are preliminary and subject to revision. r/ revised.

Sources: EIA; Edison Electric Institute; American Iron & Steel Institute; Association of American Railroads; Dept. of Commerce; S&P Global; NGI's Daily Gas Price Index



**NMA**  
THE AMERICAN RESOURCE

National Mining Association Web Site: [http:// www.nma.org](http://www.nma.org)

## EIA Estimated Weekly U.S. Coal Production Overview

Coal-Producing Region & State (thousand short tons)	Week Ended			Year to Date			52 Weeks Ended		
	10/10/2020 (week 41)	10/3/2020 (week 40)	10/12/2019 (week 41)	10/10/2020	10/10/2019	% Change	10/10/2020	10/12/2019	% Change
Alabama	227	203	233	9,375	11,482	-18.3	11,953	14,677	-18.6
Alaska	19	18	19	756	760	-0.5	966	1,014	-4.7
Arizona	.	.	.	.	3,843	-100.0	.	5,219	.
Colorado	192	182	224	7,619	10,333	-26.3	10,092	13,251	-23.8
Illinois	591	570	714	24,909	37,795	-34.1	32,809	48,527	-32.4
Indiana	415	391	549	16,237	25,331	-35.9	22,311	33,241	-32.9
<b>Kentucky Total</b>	<b>459</b>	<b>441</b>	<b>597</b>	<b>18,273</b>	<b>29,344</b>	<b>-37.7</b>	<b>24,873</b>	<b>37,913</b>	<b>-34.4</b>
Eastern (KY)	153	149	216	6,452	11,425	-43.5	8,838	14,998	-41.1
Western (KY)	306	292	381	11,821	17,920	-34.0	16,035	22,915	-30.0
Louisiana	25	25	26	908	1,248	-27.3	1,190	1,504	-20.9
Maryland	25	23	27	938	1,160	-19.2	1,241	1,468	-15.5
Mississippi	46	45	46	1,970	2,172	-9.3	2,482	2,756	-9.9
Missouri	3	3	3	119	153	-22.3	154	210	-26.7
Montana	587	559	650	21,869	27,095	-19.3	29,059	36,592	-20.6
New Mexico	217	199	265	8,355	11,535	-27.6	11,282	15,011	-24.8
North Dakota	575	484	546	19,839	20,809	-4.7	25,874	27,200	-4.9
Ohio	85	82	128	3,280	6,333	-48.2	4,690	8,467	-44.6
Oklahoma	2	2	4	38	186	-79.8	78	267	-70.8
<b>Pennsylvania Total</b>	<b>799</b>	<b>737</b>	<b>976</b>	<b>28,330</b>	<b>39,013</b>	<b>-27.4</b>	<b>39,122</b>	<b>50,108</b>	<b>-21.9</b>
Anthracite (PA)	60	52	60	1,847	1,930	-4.3	2,512	2,384	5.4
Bituminous (PA)	739	685	916	26,483	37,084	-28.6	36,610	47,724	-23.3
Tennessee	9	9	9	229	338	-32.2	325	387	-16.0
Texas	378	356	417	14,114	18,574	-24.0	18,730	23,499	-20.3
Utah	228	218	248	9,602	11,599	-17.2	12,339	14,599	-15.5
Virginia	204	196	221	7,912	9,966	-20.6	10,353	12,809	-19.2
<b>West Virginia Total</b>	<b>1,348</b>	<b>1,282</b>	<b>1,647</b>	<b>52,472</b>	<b>74,747</b>	<b>-29.8</b>	<b>70,690</b>	<b>95,175</b>	<b>-25.7</b>
Northern (WV)	700	655	859	26,990	37,333	-27.7	36,494	47,742	-23.6
Southern (WV)	648	627	788	25,483	37,413	-31.9	34,196	47,433	-27.9
Wyoming	4,566	4,321	5,343	168,128	216,326	-22.3	227,218	284,558	-20.2
<b>Appalachian Total</b>	<b>2,849</b>	<b>2,681</b>	<b>3,456</b>	<b>108,988</b>	<b>154,463</b>	<b>-29.4</b>	<b>147,212</b>	<b>198,089</b>	<b>-25.7</b>
<b>Interior Total</b>	<b>1,766</b>	<b>1,683</b>	<b>2,141</b>	<b>70,116</b>	<b>103,379</b>	<b>-32.2</b>	<b>93,790</b>	<b>132,920</b>	<b>-29.4</b>
<b>Western Total</b>	<b>6,385</b>	<b>5,981</b>	<b>7,293</b>	<b>236,168</b>	<b>302,299</b>	<b>-21.9</b>	<b>316,830</b>	<b>397,445</b>	<b>-20.3</b>
<b>East of Mississippi River</b>	<b>4,207</b>	<b>3,978</b>	<b>5,147</b>	<b>163,925</b>	<b>237,680</b>	<b>-31.0</b>	<b>220,849</b>	<b>305,529</b>	<b>-27.7</b>
<b>West of Mississippi River</b>	<b>6,793</b>	<b>6,366</b>	<b>7,743</b>	<b>251,347</b>	<b>322,460</b>	<b>-22.1</b>	<b>336,983</b>	<b>422,925</b>	<b>-20.3</b>
Bituminous and Lignite	10,940	10,292	12,830	413,424	558,210	-25.9	555,320	726,070	-23.5
Anthracite	60	52	60	1,847	1,930	-4.3	2,512	2,384	5.4
<b>U.S. Total</b>	<b>11,000</b>	<b>10,344</b>	<b>12,890</b>	<b>415,272</b>	<b>560,140</b>	<b>-25.9</b>	<b>557,832</b>	<b>728,454</b>	<b>-23.4</b>
<b>Railroad Cars Loaded</b>	<b>62,229</b>	<b>58,722</b>	<b>73,902</b>	<b>2,324,547</b>	<b>3,170,198</b>	<b>-26.7</b>	<b>3,144,260</b>	<b>4,155,903</b>	<b>-24.3</b>

Source: Energy Information Administration



# Weekly Electric Output

Volume 88 No. 41

**OUTPUT FOR WEEK ENDED - Oct 10, 2020**

**Oct 14, 2020**

The net available amount of electric energy distributed by the Total Electric Utility Industry\* for the week ended Saturday, **Oct 10, 2020** was **69,806** gigawatthours (GWh), according to the Edison Electric Institute. This is equivalent to **171** on the weekly electric output index.

**WEEKLY ELECTRIC OUTPUT BY GEOGRAPHIC DIVISION**

(48 CONTIGUOUS STATES)

	Week Ended October 10		52 Weeks Ended October 10	
	GWh Output	% Increase Over Corresponding Week of 2019	GWh Output	% Increase Over Corresponding Period of 2019
New England	1,908	-5.5	115,000	-2.3
Mid-Atlantic	6,730	-6.5	413,510	-3.9
Central Industrial	10,632	-0.9	635,893	-4.3
West Central	5,674	0.9	322,560	-2.5
Southeast	17,538	-1.1	984,232	-4.9
South Central	14,137	-1.1	753,871	-1.7
Rocky Mountain	5,330	4.3	287,612	2.3
Pacific Northwest	2,495	-11.1	154,784	-1.4
Pacific Southwest	5,362	8.4	267,003	-0.4
Total United States	69,806	-0.9	3,934,465	-2.9

**WEEKLY ELECTRIC OUTPUT IN PREVIOUS WEEKS--GWh**

Week Ended	2020	Week Ended	2019	% Inc. (20/19)	52 Weeks Ended	2020	% Inc. (20/19)
Sep 19	73,986	Sep 21	80,770	-8.4	Sep 19	3,953,869	-2.4
Sep 26	69,966	Sep 28	79,349	-11.8	Sep 26	3,944,485	-2.7
Oct 03	70,736	Oct 05	80,103	-11.7	Oct 03	3,935,119	-3.0
Oct 10	69,806	Oct 12	70,459	-0.9	Oct 10	3,934,465	-2.9
<b>Oct 10</b>	<b>3,131,243</b>	<b>Oct 12</b>	<b>3,239,646</b>	<b>-3.3</b>	<b>YEAR TO DATE, FIRST 41 WEEKS</b>		

**WEEKLY ELECTRIC OUTPUT INDEX--TOTAL U.S.\***

**SEASONALLY ADJUSTED 1982 = 100**

Week Ended	2020	Week Ended	2019	Week Ended	2018
Sep 19	182	Sep 21	195	Sep 22	196
Sep 26	178	Sep 28	198	Sep 29	180
Oct 03	183	Oct 05	205	Oct 06	194
Oct 10	171	Oct 12	174	Oct 13	183

\* Excludes Alaska and Hawaii.

+ Includes investor-owned companies, cooperatives and government-owned utilities.

Copyright © 2020 Edison Electric Institute. All rights reserved.

**EEl WEEKLY ELECTRIC OUTPUT BY GEOGRAPHIC DIVISION  
(48 CONTIGUOUS STATES)**

	Week Ended			NMA CUMULATIVE JANUARY WEEK ONE TO			52 Weeks Ended		
	10-Oct 2020 GWh Output	12-Oct 2019 GWh Output	% Increase Over Corresponding Week	10-Oct 2020 GWh Output	12-Oct 2019 GWh Output	% Increase Over Corresponding Week	10-Oct 2020 GWh Output	12-Oct 2019 GWh Output	% Increase Over Corresponding Week
<b>New England</b>	1,908	2,020	-5.5%	<b>90,708</b>	<b>92,844</b>	<b>-2.3%</b>	115,000	117,687	-2.3%
<b>Mid-Atlantic</b>	6,730	7,200	-6.5%	<b>327,447</b>	<b>342,454</b>	<b>-4.4%</b>	413,510	430,168	-3.9%
<b>Central Industrial</b>	10,632	10,724	-0.9%	<b>503,495</b>	<b>528,078</b>	<b>-4.7%</b>	635,893	664,713	-4.3%
<b>West Central</b>	5,674	5,623	0.9%	<b>255,209</b>	<b>262,519</b>	<b>-2.8%</b>	322,560	330,717	-2.5%
<b>Southeast</b>	17,538	17,734	-1.1%	<b>785,598</b>	<b>828,810</b>	<b>-5.2%</b>	984,232	1,035,102	-4.9%
<b>South Central</b>	14,137	14,291	-1.1%	<b>608,484</b>	<b>624,498</b>	<b>-2.6%</b>	753,871	766,979	-1.7%
<b>Rocky Mountain</b>	5,330	5,112	4.3%	<b>227,661</b>	<b>223,938</b>	<b>1.7%</b>	287,612	281,232	2.3%
<b>Pacific Northwest</b>	2,495	2,807	-11.1%	<b>119,556</b>	<b>122,272</b>	<b>-2.2%</b>	154,784	157,062	-1.5%
<b>Pacific Southwest</b>	5,362	4,948	8.4%	<b>213,086</b>	<b>214,235</b>	<b>-0.5%</b>	267,003	268,189	-0.4%
<b>Total United States</b> <sup>1/</sup>	69,806	70,459	-0.9%	<b>3,131,244</b>	<b>3,239,648</b>	<b>-3.3%</b>	3,934,465	4,051,849	-2.9%
<b>Coal Regions Only</b> <sup>2/</sup>	60,041	60,684	-1.1%	<b>2,707,894</b>	<b>2,810,297</b>	<b>-3.6%</b>	3,397,678	3,508,911	-3.2%

Notes: EEI output data are an estimate of electricity load made available for distribution derived as weekly net generation + purchases from non-utilities + net imports - exports - sales for resale. It is not meant to be a measure of electricity generation for the U.S. EEI survey data represent the majority of national distribution (large utilities, large government power projects, some independent and large municipal power projects). The remaining segment of the industry (smaller producers) is estimated. Non-utility generation is captured via direct sales to utilities.

<sup>1/</sup> Excludes Alaska and Hawaii

<sup>2/</sup> Excludes New England and Pacific regions

SOURCE: Edison Electric Institute (EEI), *Weekly Electric Output Report*.

AMERICAN IRON AND STEEL INSTITUTE  
 25 Massachusetts Avenue, NW, Suite 800  
 Washington, D.C. 20001

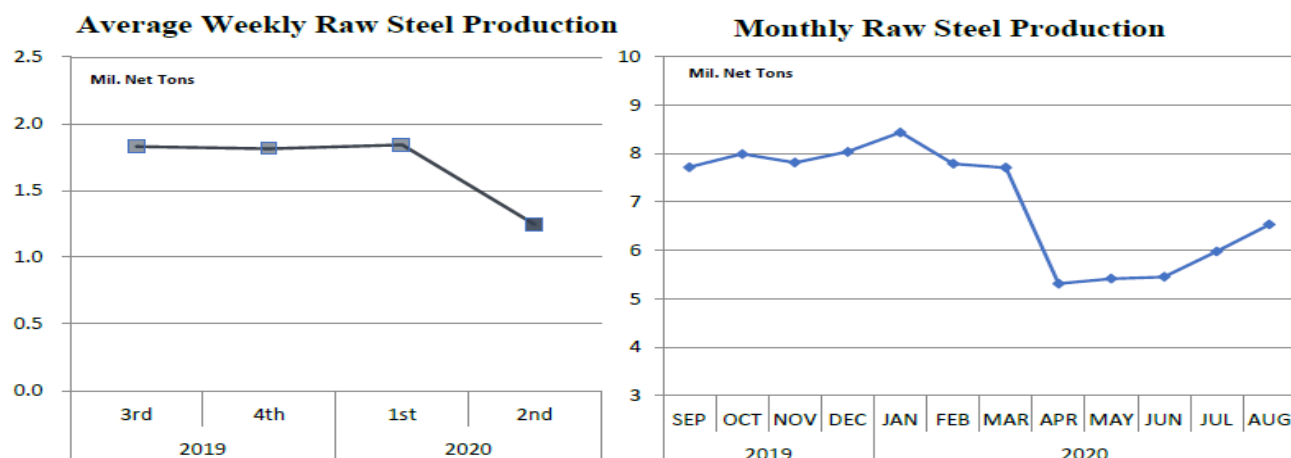
October 12, 2020

**ESTIMATED WEEKLY RAW STEEL \* PRODUCTION**

<u>Period</u>	<u>Thousand Net Tons</u>	<u>Percent Change from Previous Period</u>	<u>Percent Capability Utilization**</u>	<u>Production by District</u>		
				<u>Week Ending Oct.10</u>	<u>Week Ending Oct.3</u>	
<b><u>Week Ending</u></b>				North East	147	128
				Great Lakes	538	526
October 10, 2020	1,502	1.2	67.9	Midwest	154	163
October 10, 2019	1,805	-16.8	78.0	Southern	592	590
October 3, 2020	1,484	0.3	66.6	Western	71	73
				<b>Total</b>	<b>1,502</b>	<b>1,480</b>
<b><u>Year-to-Date +</u></b>						
October 10, 2020	60,946	-19.5	66.2			
October 10, 2019	75,741	-	80.1			

\*Raw steel production tonnage included in this report is estimated based on a sampling of steel producers (50% of domestic producers). Therefore, this report should be used primarily to assess production trends. The AISI production report "AIS 7," produced monthly and available by subscription, provides a more accurate summary of steel production based on data supplied by companies representing approximately 75% of U.S. production capacity plus includes revisions for previous months.

NOTE: Capacity for the fourth quarter 2020 is approximately 29.1 million net tons vs. 30.4 million net tons for the same period last year, and 29.4 million tons for the third quarter of 2020.



\*Steel in the first solid state after melting suitable for further processing or sale, including ingots, steel for castings and strand or pressure cast blooms, slabs or other product forms. \*\* Based on tonnage capability to produce raw steel for a sustained full order book.



Source: Kitco website - [www.kitco.com/connecting.html](http://www.kitco.com/connecting.html)



Source: Kitco website - [www.kitco.com/connecting.html](http://www.kitco.com/connecting.html)

### U.S. Rail Traffic<sup>1</sup>

Week 41, 2020 – Ended October 10, 2020

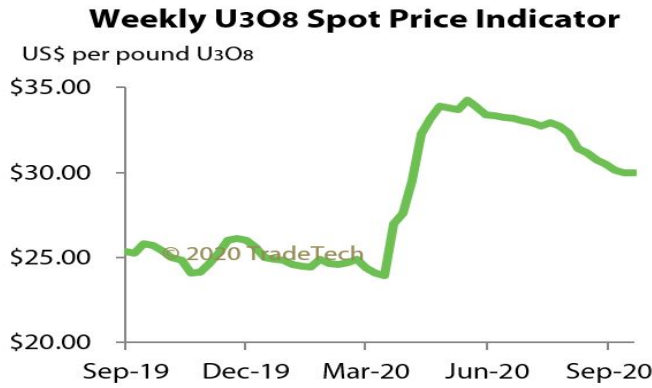
	This Week		Year-To-Date		
	Cars	vs 2019	Cumulative	Avg/wk <sup>2</sup>	vs 2019
<b>Total Carloads</b>	<b>230,964</b>	<b>-5.2%</b>	<b>8,798,767</b>	<b>214,604</b>	<b>-15.0%</b>
Chemicals	31,035	0.5%	1,256,329	30,642	-5.0%
Coal	62,229	-15.7%	2,354,633	57,430	-26.7%
Farm Products excl. Grain, and Food	16,316	3.0%	627,683	15,309	-1.5%
Forest Products	9,607	0.3%	380,068	9,270	-6.1%
Grain	27,434	31.2%	876,515	21,378	-0.9%
Metallic Ores and Metals	17,472	-11.2%	734,413	17,913	-18.4%
Motor Vehicles and Parts	16,103	5.3%	504,157	12,297	-23.8%
Nonmetallic Minerals	30,479	-14.2%	1,223,744	29,847	-14.1%
Petroleum and Petroleum Products	10,259	-19.2%	452,665	11,041	-12.7%
Other	10,030	7.0%	388,560	9,477	-0.9%
<b>Total Intermodal Units</b>	<b>289,488</b>	<b>8.4%</b>	<b>10,323,848</b>	<b>251,801</b>	<b>-5.5%</b>
<b>Total Traffic</b>	<b>520,452</b>	<b>1.9%</b>	<b>19,122,615</b>	<b>466,405</b>	<b>-10.1%</b>

<sup>1</sup> Excludes U.S. operations of Canadian Pacific, CN and GMXT.

<sup>2</sup> Average per week figures may not sum to totals as a result of independent rounding.

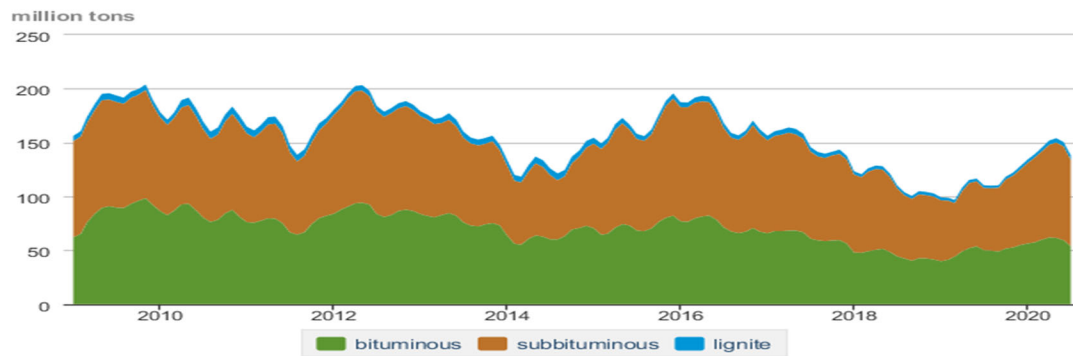
Source: AAR website - <https://www.aar.org/Pages/NEWS-and-EVENTS.aspx>

### Trade Tech's and UX's Uranium Price Indicators



Sources: Trade Tech, Uranium Info Website – [www.uranium.info](http://www.uranium.info) ; Source: Ux Consulting Co., LLC – <http://www.uxc.com>

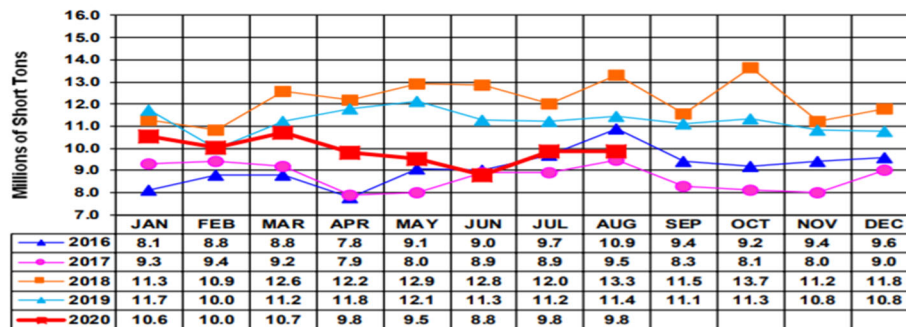
### Coal stocks by type, January 2009 - July 2020



Source: U.S. Energy Information Administration

Source: Energy Information Administration, Electric Monthly Update

### Coal and Coke Monthly Indicator for Internal U.S. Waterways



For the Internal U.S. Waterway Monthly Indicators, estimates for the most recent month are based on lock performance management data. The estimates will be superseded by actual data as it becomes available.

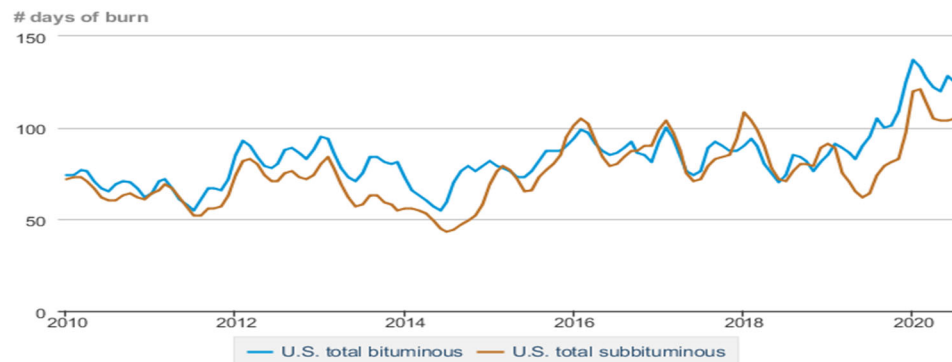
Source: Waterborne Commerce Statistics Center

**Average weekly coal commodity spot prices**  
*dollars per short ton*

	Week ending					Week ago
	09/11/20	09/18/20	09/25/20	10/02/20	10/09/20	change
Central Appalachia <i>12,500 Btu, 1.2 SO<sub>2</sub></i>	\$59.50	\$59.50	\$59.50	\$59.50	\$59.50	\$0.00
Northern Appalachia <i>13,000 Btu, &lt; 3.0 SO<sub>2</sub></i>	\$42.45	\$42.45	\$42.45	\$42.45	\$42.45	\$0.00
Illinois Basin <i>11,800 Btu, 5.0 SO<sub>2</sub></i>	\$34.05	\$34.05	\$34.05	\$34.05	\$34.05	\$0.00
Powder River Basin <i>8,800 Btu, 0.8 SO<sub>2</sub></i>	\$11.70	\$11.70	\$11.70	\$11.75	\$11.75	\$0.00
Uinta Basin <i>11,700 Btu, 0.8 SO<sub>2</sub></i>	\$29.10	\$29.10	\$29.10	\$29.10	\$29.10	\$0.00

Source: Energy Information Administration (with permission from S&P Global), *Coal Market Report*

**Days of burn by non-lignite coal rank, January 2010 - July 2020**



 Source: U.S. Energy Information Administration

Source: Energy Information Administration, *Electricity Monthly Update Report*

**Temperature – heating & cooling degree days (week ending Oct 01)**

Region	HDD Current	HDD deviation from:		CDD Current	CDD deviation from:	
		normal	last year		normal	last year
New England	7	-51	-16	16	15	11
Middle Atlantic	13	-35	5	13	8	-7
E N Central	44	-7	28	7	2	-25
W N Central	47	-4	10	12	3	-21
South Atlantic	10	-10	10	50	5	-46
E S Central	19	0	19	27	-3	-73
W S Central	9	4	9	47	-10	-71
Mountain	41	-13	-11	38	12	19
Pacific	5	-13	-36	50	31	45
United States	23	-13	3	31	7	-19

Note: HDD = heating degree day; CDD = cooling degree day

Source: National Oceanic and Atmospheric Administration

Source: Energy Information Administration, *Natural Gas Weekly Update*.

USGS Production of Selected Mineral Commodities	2020 Year to Date - 2nd Quarter	2019 Year to Date - 2nd Quarter	Percent Change
Aluminum, secondary (000 Mt.)	410.0	419.0	-2%
Cement (Mil. Mt.)	41.5	40.2	3%
Copper (000 Mt.)	590.0	615.0	-4%
Gold (Mt.)	91.9	100.0	-8%
Gypsum (Mil. Mt.)	8.5	8.7	-2%
Iron Ore (Mil. Mt.)	17.4	23.3	-25%
Lead (000 Mt.)	137.0	136.0	1%
Molybdenum (000 Mt.)	29.2	21.7	35%
Phosphate rock (Mil. Mt.)	11.9	11.3	5%
Sand & gravel, construction (Mil. Mt.)	428.0	431.0	-1%
Silver (Mt.)	490.0	482.0	2%
Soda ash (Mil. Mt.)	5.1	5.8	-12%
Stone, crushed (Mil. Mt.)	694.0	699.0	-1%
Zinc (000 Mt.)	308.0	362.0	-15%

Source: U.S. Geological Survey, Mineral Industry Surveys. Percent change based on USGS rounded numbers. 2020 data are preliminary estimates. W - withheld, N/A - not available

**Natural gas spot prices (Henry Hub)**



Source: Energy Information Administration, *Natural Gas Weekly*

**EIA Coal Stocks and Average Number of Days of Burn (Power Sector)**

Coal stocks and average number of days of burn for non-lignite coal by region (electric power sector)

Zone	Coal	July 2020		July 2019		% Change of Stocks	June 2020		% Change of Stocks
		Stocks (1000 tons)	Days of Burn	Stocks (1000 tons)	Days of Burn		Stocks (1000 tons)	Days of Burn	
Northeast	Bituminous	3,669	271	3,762	181	-2.5%	3,857	278	-4.9%
	Subbituminous	160	213	163	206	-2.3%	162	232	-1.2%
South	Bituminous	21,739	112	22,745	97	-4.4%	25,421	116	-14.5%
	Subbituminous	6,712	77	4,194	42	60.0%	7,789	82	-13.8%
Midwest	Bituminous	13,674	119	10,054	79	36.0%	14,156	117	-3.4%
	Subbituminous	29,169	128	21,373	76	36.5%	30,931	126	-5.7%
West	Bituminous	3,598	149	3,938	80	-8.6%	4,059	166	-11.4%
	Subbituminous	27,067	94	20,398	60	32.7%	29,708	93	-8.9%
U.S. Total	Bituminous	42,679	125	40,499	95	5.4%	47,493	128	-10.1%
	Subbituminous	63,108	105	46,129	64	36.8%	68,589	104	-8.0%

Source: Energy Information Administration, *Electricity Monthly Update*

### EIA Working Natural Gas Underground Storage

#### Working gas in underground storage

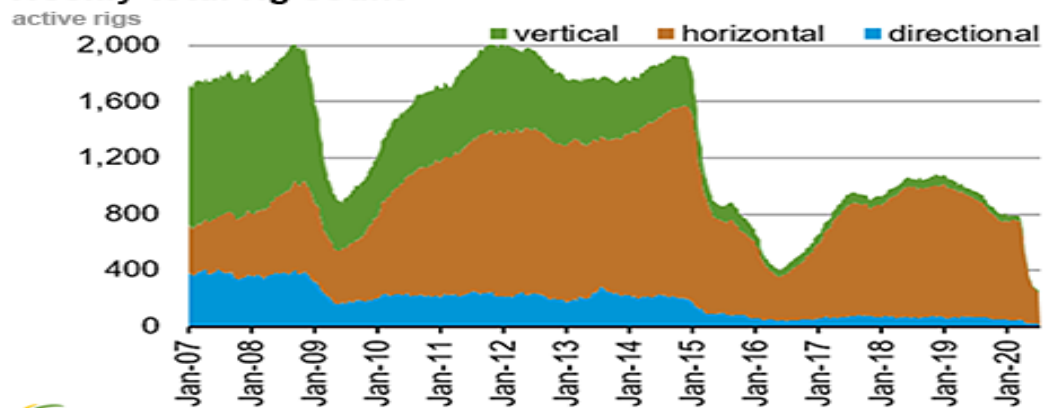
Region	Stocks billion cubic feet (Bcf)		
	2020-10-02	2020-09-25	change
East	893	872	21
Midwest	1,062	1,033	29
Mountain	236	231	5
Pacific	318	316	2
South Central	1,322	1,304	18
Total	3,831	3,756	75

Source: Form EIA-912, *Weekly Underground Natural Gas Storage Report*

Source: Energy Information Administration, *Natural Gas Weekly Update*

### EIA Natural Gas Rig Count

#### Weekly total rig count



Source: Baker Hughes Co.

Source: Energy Information Administration, *Natural Gas Weekly Update*

### EIA Oil and Natural Gas Rig Productivity

Region	New-well oil production per rig barrels/day			New-well gas production per rig thousand cubic feet/day		
	October 2020	November 2020	change	October 2020	November 2020	change
Anadarko	1,031	980	(51)	6,484	6,160	(324)
Appalachia	172	173	1	26,177	26,700	523
Bakken	2,273	2,300	27	3,000	3,105	105
Eagle Ford	2,449	2,498	49	8,523	8,694	171
Haynesville	20	20	-	11,269	11,271	2
Niobrara	2,028	2,038	10	5,554	5,565	11
Permian	1,199	1,283	84	2,155	2,198	43
Rig-weighted average	1,001	1,031	30	7,445	7,582	137

Source: Energy Information Administration, *Drilling Productivity Report*