
NATIONAL MINING ASSOCIATION

Weekly Statistical Summary

January 1, 2021 Edition
(Data for Week Ending December 26, 2020)

Prepared by
National Mining Association



101 Constitution Avenue, NW, Suite 500 East
Washington, DC, 20001
Phone (202) 463-2600
<http://www.nma.org>

NMA Weekly Statistical Summary

Vol. 58, No. 52
Dated 01/01/21

PRODUCTION, CONSUMPTION & TRADE

	Week Ended			* Cumulative Jan 1 to		
	12/26/20	12/28/19	% Chng	12/26/20	12/26/19	% Chng
EIA Coal Production (000 Tons):						
Week Ended/Year to Date	8,751	10,267	-14.8%	532,040	698,247	-23.8%
52 Weeks Ended	537,150	704,470	-23.8%			
AAR Coal Rail Cars Loaded:	50,742	60,454	-16.1%	2,984,677	3,963,124	-24.7%
Coal Production Month Ended - Nov	November 20/19 45,960	% Chng 54,393	% Chng -15.5%	Jan - Nov 20/19 492,618	% Chng 653,126	% Chng -24.6%
DOC Coal Trade (000 Tons)						
Exports:	October 20/19			Jan - Oct 20/19		
			% Chng			% Chng
Metallurgical	3,416	3,835	-10.9%	34,272	46,311	-26.0%
Steam Bit. *	1,623	2,581	-37.1%	20,593	32,293	-36.2%
Lignite	7	9	-22.2%	77	78	-1.3%
Anthracite	4	7	-42.9%	162	239	-32.2%
Total	5,050	6,432	-21.5%	55,104	78,921	-30.2%
Imports:	263	742	-64.6%	4,036	5,716	-29.4%
	Week Ended			Cumulative Week 1 to		
	12/26/20	12/28/19	% Chng	12/26/20	12/28/19	% Chng
EI Electric Total Output (Mil. Kwh)	76,347	70,949	7.6%	3,923,809	4,042,869	-2.9%
EI Coal Region Output (Mil. Kwh)	65,789	60,262	9.2%	3,389,243	3,500,082	-3.2%
AISI Raw Steel Output (000 Tons)	1,600	1,815	-11.8%	78,739	95,709	-17.7%

EIA (S&P Global) AVERAGE COAL & NATURAL GAS SPOT PRICES Dollars Per Short Ton

Average Coal Spot Prices (\$/Short Ton)	Week Ending			Natural Gas Spot Prices (\$/MMBtu)	
	12/26/20	12/18/20	% Chng	Wed.	12/16/20
Central App, 12,500 Btu, 1.2 SO ₂	\$54.35	\$54.35	0.0%	Henry Hub	2.67
Northern App, 13,000 Btu, < 3.0 SO ₂	45.15	45.15	0.0%	New York	5.53
Illinois Basin, 11,800, 5.0 SO ₂	34.10	34.10	0.0%	Chicago	2.55
Powder River Basin, 8,800 Btu 0.8 SO ₂	11.55	11.55	0.0%	Cal.Comp.Avg.	3.72
Uinta Basin, 11,700 Btu, 0.8 SO ₂	29.85	29.85	0.0%		

Coal exports and Imports are "as reported" (not revised); *Steam excludes lignite & anthracite. All data in this report are preliminary and subject to revision. r/ revised.

Sources: EIA; Edison Electric Institute; American Iron & Steel Institute; Association of American Railroads; Dept. of Commerce; S&P Global; NGI's Daily Gas Price Index



NMA
THE AMERICAN RESOURCE

National Mining Association Web Site: [http:// www.nma.org](http://www.nma.org)

EIA Estimated Weekly U.S. Coal Production Overview									
Coal-Producing Region & State (thousand short tons)	Week Ended			Year to Date			52 Weeks Ended		
	12/26/2020 (week 52)	12/19/2020 (week 51)	12/28/2019 (week 52)	12/26/2020	12/26/2019	% Change	12/26/2020	12/28/2019	% Change
Alabama	190	226	186	11,984	13,978	-14.3	12,077	14,094	-14.3
Alaska	17	21	15	992	963	3.0	999	972	2.8
Arizona	3,843	-100.0	.	3,870	.
Colorado	153	193	178	9,756	12,728	-23.4	9,844	12,836	-23.3
Illinois	471	588	569	30,973	45,449	-31.9	31,256	45,821	-31.8
Indiana	324	406	437	20,182	31,215	-35.3	20,400	31,495	-35.2
Kentucky Total	369	467	475	23,518	35,738	-34.2	23,754	36,042	-34.1
Eastern (KY)	120	154	172	7,974	13,736	-41.9	8,060	13,856	-41.8
Western (KY)	249	313	303	15,543	22,002	-29.4	15,694	22,186	-29.3
Louisiana	16	21	20	889	1,522	-41.6	899	1,532	-41.3
Maryland	18	23	22	1,118	1,454	-23.1	1,129	1,466	-23.0
Mississippi	40	51	37	2,810	2,668	5.3	2,829	2,690	5.2
Missouri	2	3	3	156	187	-16.9	157	189	-16.9
Montana	452	581	518	26,706	34,061	-21.6	26,964	34,395	-21.6
New Mexico	178	218	211	10,708	14,370	-25.5	10,813	14,498	-25.4
North Dakota	486	573	435	26,859	26,656	0.8	27,075	26,904	0.6
Ohio	67	84	102	3,801	7,699	-50.6	3,852	7,770	-50.4
Oklahoma	2	2	3	23	225	-89.8	24	227	-89.4
Pennsylvania Total	625	762	777	35,859	49,468	-27.5	36,246	49,906	-27.4
Anthracite (PA)	45	55	48	2,407	2,573	-6.5	2,431	2,596	-6.4
Bituminous (PA)	580	707	729	33,452	46,894	-28.7	33,815	47,310	-28.5
Tennessee	7	10	7	205	430	-52.5	208	433	-52.0
Texas	298	380	332	18,727	23,046	-18.7	18,893	23,237	-18.7
Utah	198	245	197	12,855	14,251	-9.8	12,953	14,365	-9.8
Virginia	159	201	176	9,686	12,331	-21.5	9,773	12,437	-21.4
West Virginia Total	1,051	1,313	1,312	65,949	92,395	-28.6	66,602	93,169	-28.5
Northern (WV)	563	697	685	35,199	46,541	-24.4	35,539	46,940	-24.3
Southern (WV)	488	616	628	30,750	45,854	-32.9	31,063	46,229	-32.8
Wyoming	3,628	4,612	4,256	218,285	273,570	-20.2	220,403	276,119	-20.2
Appalachian Total	2,238	2,773	2,753	136,577	191,492	-28.7	137,947	193,131	-28.6
Interior Total	1,402	1,765	1,705	89,303	126,314	-29.3	90,152	127,379	-29.2
Western Total	5,112	6,443	5,809	306,160	380,441	-19.5	309,051	383,960	-19.5
East of Mississippi River	3,322	4,132	4,100	206,086	292,826	-29.6	208,126	295,324	-29.5
West of Mississippi River	5,430	6,849	6,168	325,955	405,420	-19.6	329,024	409,146	-19.6
Bituminous and Lignite	8,707	10,927	10,219	529,633	695,673	-23.9	534,720	701,874	-23.8
Anthracite	45	55	48	2,407	2,573	-6.5	2,431	2,596	-6.4
U.S. Total	8,751	10,981	10,267	532,040	698,247	-23.8	537,150	704,470	-23.8
Railroad Cars Loaded	50,742	62,110	60,454	2,984,677	3,963,124	-24.7	3,014,762	4,000,171	-24.6

Source: Energy Information Administration



Weekly Electric Output

Volume 88 No. 52

OUTPUT FOR WEEK ENDED - Dec 26, 2020

Dec 30, 2020

The net available amount of electric energy distributed by the Total Electric Utility Industry* for the week ended Saturday, **Dec 26, 2020** was **76,347** gigawatthours (GWh), according to the Edison Electric Institute. This is equivalent to **177** on the weekly electric output index.

WEEKLY ELECTRIC OUTPUT BY GEOGRAPHIC DIVISION

(48 CONTIGUOUS STATES)

	Week Ended December 26		52 Weeks Ended December 26	
	GWh Output	% Increase Over Corresponding Week of 2019	GWh Output	% Increase Over Corresponding Period of 2019
New England	2,307	2.9	114,308	-2.4
Mid-Atlantic	8,092	2.1	408,677	-4.6
Central Industrial	12,345	10.2	630,703	-4.5
West Central	6,258	8.2	321,004	-2.7
Southeast	19,920	17.0	984,921	-4.1
South Central	13,623	7.3	756,856	-1.7
Rocky Mountain	5,551	-1.4	287,084	1.1
Pacific Northwest	3,523	-0.8	153,806	-2.3
Pacific Southwest	4,728	-3.4	266,450	-0.6
Total United States	76,347	7.6	3,923,809	-2.9

WEEKLY ELECTRIC OUTPUT IN PREVIOUS WEEKS--GWh

Week Ended	2020	Week Ended	2019	% Inc. (20/19)	52 Weeks Ended	2020	% Inc. (20/19)
Dec 05	75,942	Dec 07	76,146	-0.3	Dec 05	3,921,175	-3.0
Dec 12	75,475	Dec 14	77,234	-2.3	Dec 12	3,919,416	-3.0
Dec 19	80,039	Dec 21	81,044	-1.2	Dec 19	3,918,411	-3.1
Dec 26	76,347	Dec 28	70,949	7.6	Dec 26	3,923,809	-2.9
Dec 26	3,923,809	Dec 28	4,042,869	-2.9	YEAR TO DATE, FIRST 52 WEEKS		

WEEKLY ELECTRIC OUTPUT INDEX--TOTAL U.S.*

SEASONALLY ADJUSTED 1982 = 100

Week Ended	2020	Week Ended	2019	Week Ended	2018
Dec 05	172	Dec 07	173	Dec 08	185
Dec 12	165	Dec 14	168	Dec 15	179
Dec 19	176	Dec 21	179	Dec 22	172
Dec 26	177	Dec 28	163	Dec 29	172

* Excludes Alaska and Hawaii.

+ Includes investor-owned companies, cooperatives and government-owned utilities.

Copyright © 2020 Edison Electric Institute. All rights reserved.

**EEl WEEKLY ELECTRIC OUTPUT BY GEOGRAPHIC DIVISION
(48 CONTIGUOUS STATES)**

	Week Ended			NMA CUMULATIVE JANUARY WEEK ONE TO			52 Weeks Ended		
	26-Dec 2020 GWh Output	28-Dec 2019 GWh Output	% Increase Over Corresponding Week	26-Dec 2020 GWh Output	28-Dec 2019 GWh Output	% Increase Over Corresponding Week	26-Dec 2020 GWh Output	28-Dec 2019 GWh Output	% Increase Over Corresponding Week
New England	2,307	2,242	2.9%	114,308	117,136	-2.4%	114,308	117,133	-2.4%
Mid-Atlantic	8,092	7,925	2.1%	408,677	428,518	-4.6%	408,677	428,514	-4.6%
Central Industrial	12,345	11,202	10.2%	630,704	660,479	-4.5%	630,703	660,478	-4.5%
West Central	6,258	5,782	8.2%	321,003	329,868	-2.7%	321,004	329,870	-2.7%
Southeast	19,920	17,025	17.0%	984,918	1,027,440	-4.1%	984,921	1,027,445	-4.1%
South Central	13,623	12,697	7.3%	756,856	769,888	-1.7%	756,856	769,886	-1.7%
Rocky Mountain	5,551	5,631	-1.4%	287,085	283,889	1.1%	287,084	283,887	1.1%
Pacific Northwest	3,523	3,553	-0.8%	153,805	157,501	-2.3%	153,806	157,502	-2.3%
Pacific Southwest	4,728	4,892	-3.4%	266,454	268,154	-0.6%	266,450	268,153	-0.6%
Total United States ^{1/}	76,347	70,949	7.6%	3,923,810	4,042,873	-2.9%	3,923,809	4,042,868	-2.9%
Coal Regions Only ^{2/}	65,789	60,262	9.2%	3,389,243	3,500,082	-3.2%	3,389,245	3,500,080	-3.2%

Notes: EEI output data are an estimate of electricity load made available for distribution derived as weekly net generation + purchases from non-utilities + net imports - exports - sales for resale. It is not meant to be a measure of electricity generation for the U.S. EEI survey data represent the majority of national distribution (large utilities, large government power projects, some independent and large municipal power projects). The remaining segment of the industry (smaller producers) is estimated. Non-utility generation is captured via direct sales to utilities.

^{1/} Excludes Alaska and Hawaii

^{2/} Excludes New England and Pacific regions

SOURCE: Edison Electric Institute (EEI), *Weekly Electric Output Report*.

AMERICAN IRON AND STEEL INSTITUTE
 25 Massachusetts Avenue, NW, Suite 800
 Washington, D.C. 20001

December 28, 2020

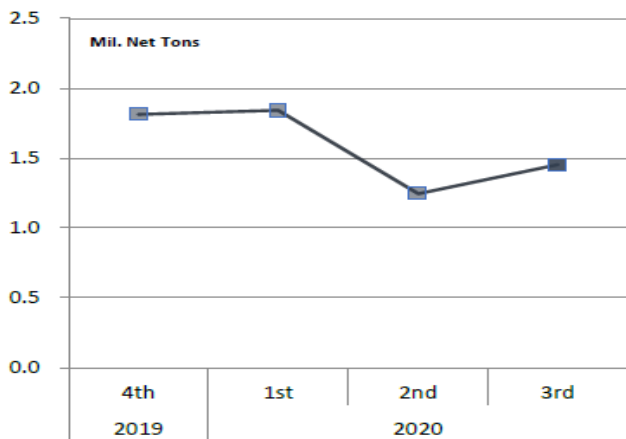
ESTIMATED WEEKLY RAW STEEL * PRODUCTION

<u>Period</u>	<u>Thousand Net Tons</u>	<u>Percent Change from Previous Period</u>	<u>Percent Capability Utilization**</u>	<u>Production by District</u>		
				<u>Week Ending Dec 26</u>	<u>Week Ending Dec 19</u>	
<u>Week Ending</u>				North East	138	141
				Great Lakes	576	581
December 26, 2020	1,600	-1.2	72.3	Midwest	170	172
December 26, 2019	1,815	-11.8	78.5	Southern	646	650
December 19, 2020	1,619	3.3	73.2	Western	<u>70</u>	<u>75</u>
				Total	1,600	1,619
<u>Year-to-Date +</u>						
December 26, 2020	78,739	-17.7	67.4			
December 26, 2019	95,709	-	79.8			

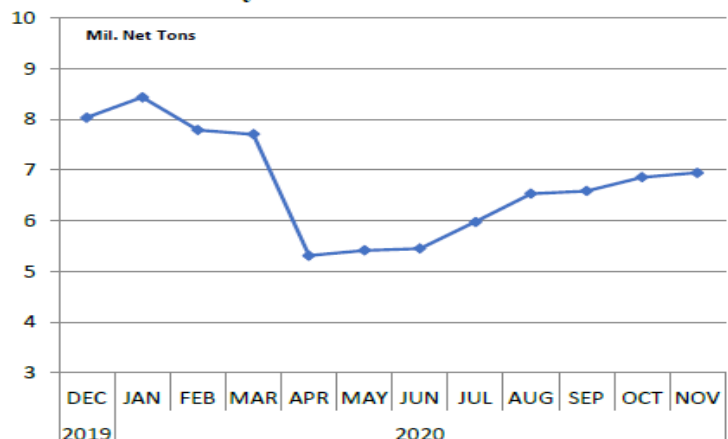
*Raw steel production tonnage included in this report is estimated based on a sampling of steel producers (50% of domestic producers). Therefore, this report should be used primarily to assess production trends. The AISI production report "AIS 7," produced monthly and available by subscription, provides a more accurate summary of steel production based on data supplied by companies representing approximately 75% of U.S. production capacity plus includes revisions for previous months.

NOTE: Capacity for the fourth quarter 2020 is approximately 29.1 million net tons vs. 30.4 million net tons for the same period last year, and 29.4 million tons for the third quarter of 2020.

Average Weekly Raw Steel Production



Monthly Raw Steel Production



*Steel in the first solid state after melting suitable for further processing or sale, including ingots, steel for castings and strand or pressure cast blooms, slabs or other product forms. ** Based on tonnage capability to produce raw steel for a sustained full order book.



Source: Kitco website - www.kitco.com/connecting.html

U.S. Rail Traffic¹
Week 52, 2020 – Ended December 26, 2020

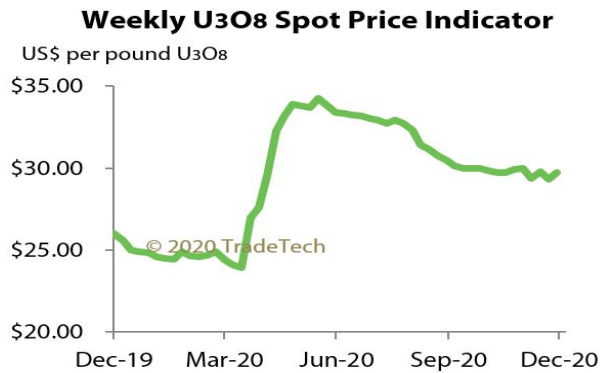
	This Week		Year-To-Date		
	Cars	vs 2019	Cumulative	Avg/wk ²	vs 2019
Total Carloads	185,029	-3.4%	11,279,815	216,920	-13.0%
Chemicals	27,479	-4.8%	1,603,086	30,829	-3.5%
Coal	50,742	-15.9%	3,014,762	57,976	-24.6%
Farm Products excl. Grain, and Food	13,562	0.6%	803,854	15,459	-0.4%
Forest Products	8,352	-4.5%	483,067	9,290	-5.1%
Grain	21,769	40.2%	1,165,912	22,421	4.5%
Metallic Ores and Metals	18,330	-8.0%	950,372	18,276	-15.9%
Motor Vehicles and Parts	10,211	19.2%	668,318	12,852	-19.7%
Nonmetallic Minerals	17,641	-7.3%	1,526,849	29,362	-13.2%
Petroleum and Petroleum Products	10,296	-9.3%	569,640	10,955	-13.8%
Other	6,647	17.6%	493,955	9,499	-0.6%
Total Intermodal Units	220,082	20.8%	13,455,711	258,764	-2.0%
Total Traffic	405,111	8.4%	24,735,526	475,683	-7.4%

¹ Excludes U.S. operations of Canadian Pacific, CN and GMXT.

² Average per week figures may not sum to totals as a result of independent rounding.

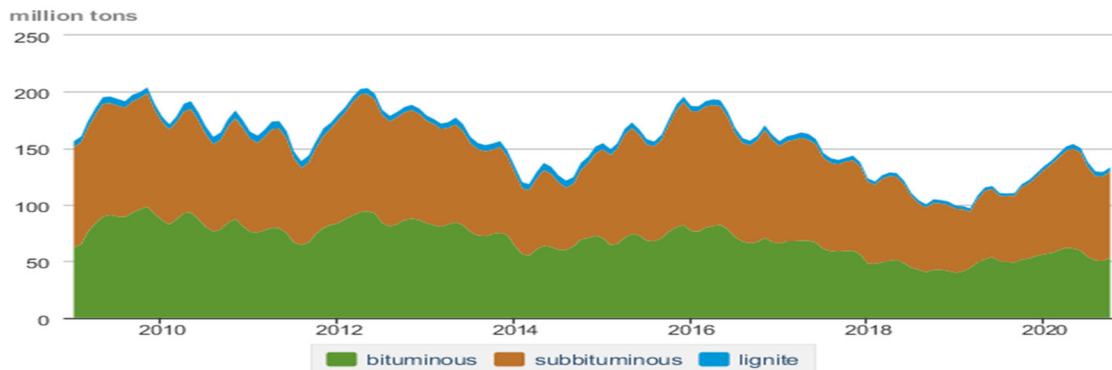
Source: AAR website - <https://www.aar.org/Pages/NEWS-and-EVENTS.aspx>

Trade Tech's and UX's Uranium Price Indicators



Sources: Trade Tech, Uranium Info Website – www.uranium.info ; Source: Ux Consulting Co., LLC – <http://www.uxc.com>

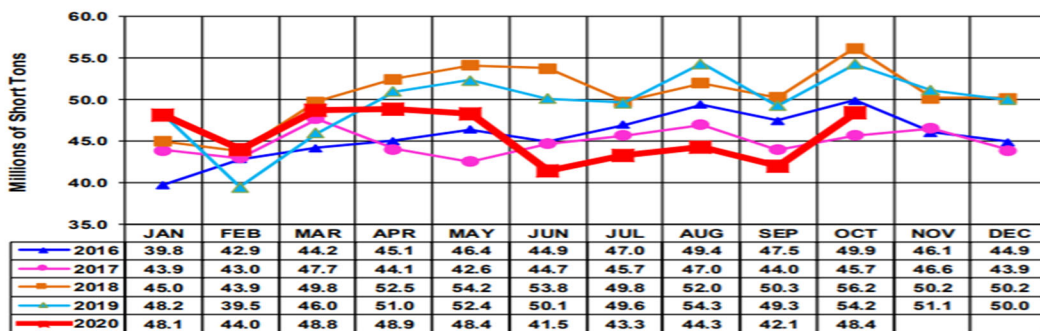
Coal stocks by type, January 2009 - October 2020



Source: U.S. Energy Information Administration

Source: Energy Information Administration, Electric Monthly Update

All Commodities Monthly Indicator for Internal U.S. Waterways



For the Internal U.S. Waterway Monthly Indicators, estimates for the most recent month are based on lock performance management data. The estimates will be superseded by actual data as it becomes available.

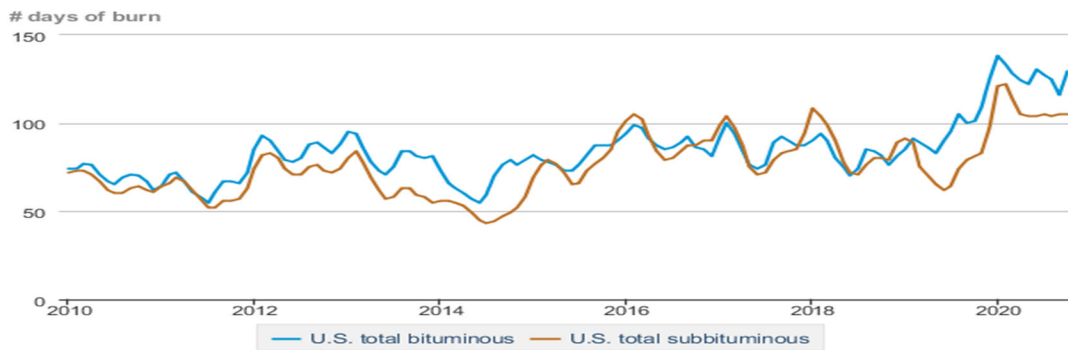
Source: Waterborne Commerce Statistics Center

Average weekly coal commodity spot prices *dollars per short ton*

	Week ending					Week ago
	11/27/20	12/04/20	12/11/20	12/18/20	12/25/20	change
Central Appalachia <i>12,500 Btu, 1.2 SO₂</i>	\$52.75	\$54.35	\$54.35	\$54.35	\$54.35	\$0.00
Northern Appalachia <i>13,000 Btu, < 3.0 SO₂</i>	\$43.80	\$45.15	\$45.15	\$45.15	\$45.15	\$0.00
Illinois Basin <i>11,800 Btu, 5.0 SO₂</i>	\$34.10	\$34.10	\$34.10	\$34.10	\$34.10	\$0.00
Powder River Basin <i>8,800 Btu, 0.8 SO₂</i>	\$11.60	\$11.55	\$11.55	\$11.55	\$11.55	\$0.00
Uinta Basin <i>11,700 Btu, 0.8 SO₂</i>	\$29.95	\$29.85	\$29.85	\$29.85	\$29.85	\$0.00

Source: Energy Information Administration (with permission from S&P Global), *Coal Market Report*

Days of burn by non-lignite coal rank, January 2010 - October 2020



Source: U.S. Energy Information Administration

Source: Energy Information Administration, *Electricity Monthly Update Report*

Region	Temperature – heating & cooling degree days (week ending Dec 10)					
	HDD Current	HDD deviation from:		CDD Current	CDD deviation from:	
		normal	last year		normal	last year
New England	212	-4	-8	0	0	0
Middle Atlantic	202	-3	0	0	0	0
E N Central	208	-28	-15	0	0	0
W N Central	191	-71	-60	0	0	0
South Atlantic	153	9	26	4	-5	-6
E S Central	154	6	32	0	-1	0
W S Central	99	-10	22	0	-3	-5
Mountain	186	-31	4	0	0	0
Pacific	86	-28	-10	0	-1	0
United States	164	-20	-4	1	-1	-2

Note: HDD = heating degree day; CDD = cooling degree day

Source: National Oceanic and Atmospheric Administration

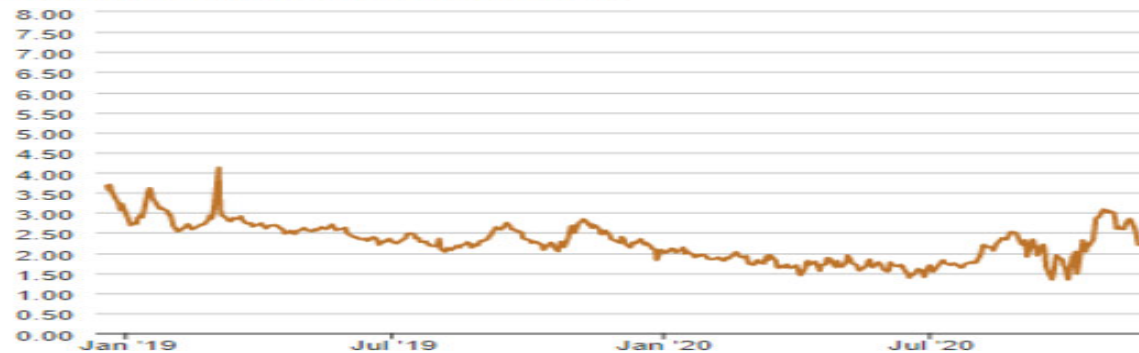
Source: Energy Information Administration, *Natural Gas Weekly Update*.

USGS Production of Selected Mineral Commodities	2020 Year to Date - 2nd Quarter	2019 Year to Date - 2nd Quarter	Percent Change
Aluminum, secondary (000 Mt.)	410.0	419.0	-2%
Cement (Mil. Mt.)	41.5	40.2	3%
Copper (000 Mt.)	590.0	615.0	-4%
Gold (Mt.)	91.9	100.0	-8%
Gypsum (Mil. Mt.)	8.5	8.7	-2%
Iron Ore (Mil. Mt.)	17.4	23.3	-25%
Lead (000 Mt.)	137.0	136.0	1%
Molybdenum (000 Mt.)	29.2	21.7	35%
Phosphate rock (Mil. Mt.)	11.9	11.3	5%
Sand & gravel, construction (Mil. Mt.)	428.0	431.0	-1%
Silver (Mt.)	490.0	482.0	2%
Soda ash (Mil. Mt.)	5.1	5.8	-12%
Stone, crushed (Mil. Mt.)	694.0	699.0	-1%
Zinc (000 Mt.)	308.0	362.0	-15%

Source: U.S. Geological Survey, Mineral Industry Surveys. Percent change based on USGS rounded numbers. 2020 data are preliminary estimates. W - withheld, N/A - not available

Natural gas spot prices (Henry Hub)

dollars per million British thermal units



eia Source: Natural Gas Intelligence

Source: Energy Information Administration, *Natural Gas Weekly*.

EIA Coal Stocks and Average Number of Days of Burn (Power Sector)

Coal stocks and average number of days of burn for non-lignite coal by region (electric power sector)

Zone	Coal	October 2020		October 2019		% Change of Stocks	September 2020		
		Stocks (1000 tons)	Days of Burn	Stocks (1000 tons)	Days of Burn		Stocks (1000 tons)	Days of Burn	% Change of Stocks
Northeast	Bituminous	4,274	314	3,996	193	7.0%	3,910	284	9.3
	Subbituminous	160	142	162	158	-1.2%	160	159	0.0
South	Bituminous	20,332	119	23,217	109	-12.4%	17,908	105	13.5
	Subbituminous	6,062	85	5,236	64	15.8%	6,060	83	0.0
Midwest	Bituminous	13,745	114	11,182	85	22.9%	13,327	112	3.1
	Subbituminous	28,477	123	25,172	98	13.1%	28,696	125	-0.8
West	Bituminous	3,894	182	3,223	66	20.8%	3,815	160	2.1
	Subbituminous	23,270	93	21,285	71	9.3%	23,383	92	-0.5
U.S. Total	Bituminous	42,244	129	41,617	101	1.5%	38,960	116	8.4
	Subbituminous	57,968	105	51,854	81	11.8%	58,299	105	-0.6

Source: Energy Information Administration, *Electricity Monthly Update*

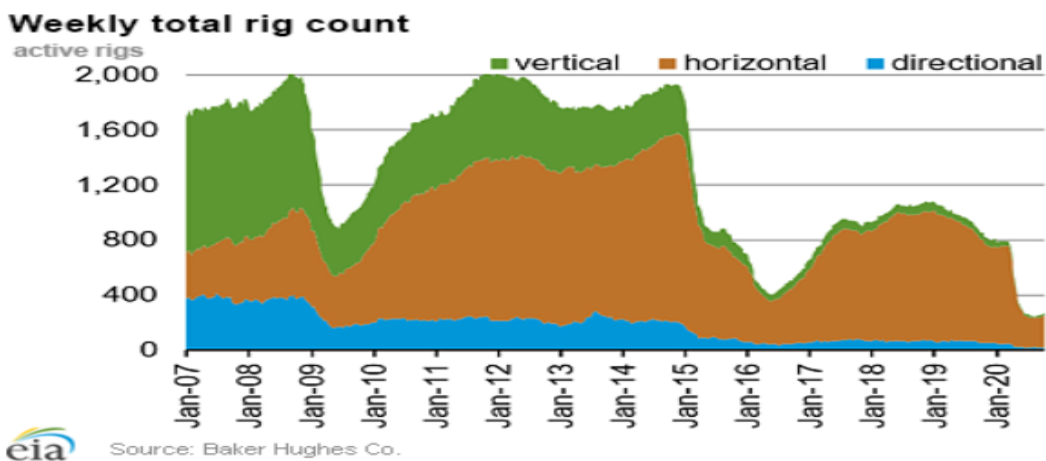
EIA Working Natural Gas Underground Storage

Region	Stocks billion cubic feet (Bcf)		
	2020-12-11	2020-12-04	change
East	881	915	-34
Midwest	1,059	1,095	-36
Mountain	223	232	-9
Pacific	306	312	-6
South Central	1,256	1,294	-38
Total	3,726	3,848	-122

Source: Form EIA-912, *Weekly Underground Natural Gas Storage Report*

Source: Energy Information Administration, *Natural Gas Weekly Update*

EIA Natural Gas Rig Count



Source: Energy Information Administration, *Natural Gas Weekly Update*

EIA Oil and Natural Gas Rig Productivity

Region	New-well oil production per rig barrels/day			New-well gas production per rig thousand cubic feet/day		
	December 2020	January 2021	change	December 2020	January 2021	change
Anadarko	952	905	(47)	5,935	5,639	(296)
Appalachia	175	177	2	26,727	26,754	27
Bakken	2,083	2,042	(41)	2,763	2,724	(39)
Eagle Ford	2,334	2,171	(163)	7,381	6,864	(517)
Haynesville	20	20	-	11,216	11,218	2
Niobrara	2,030	2,010	(20)	5,536	5,481	(55)
Permian	1,217	1,156	(61)	2,085	1,981	(104)
Rig-weighted average	1,036	1,025	(11)	7,278	6,710	(568)

Source: Energy Information Administration, *Drilling Productivity Report*