

---

# NATIONAL MINING ASSOCIATION

## *Weekly Statistical Summary*

---

**December 4, 2020 Edition**  
**(Data for Week Ending November 28, 2020)**

**Prepared by**  
**National Mining Association**



101 Constitution Avenue, NW, Suite 500 East  
Washington, DC, 20001  
Phone (202) 463-2600  
<http://www.nma.org>

# NMA Weekly Statistical Summary

Vol. 58, No. 48  
Dated 12/04/20

## PRODUCTION, CONSUMPTION & TRADE

	Week Ended			* Cumulative Jan 1 to		
	11/28/20	11/30/19	% Chng	11/28/20	11/28/19	% Chng
<b>EIA Coal Production (000 Tons):</b>						
Week Ended/Year to Date	10,575	11,836	-10.7%	489,266	649,812	-24.7%
52 Weeks Ended	542,449	714,642	-24.1%			
AAR Coal Rail Cars Loaded:	59,775	67,858	-11.9%	2,742,855	3,684,311	-25.6%
Coal Production Month Ended - Oct	<b>October 2019</b>		<b>% Chng</b>	<b>Jan - Oct 2019</b>		<b>% Chng</b>
	46,599	57,674	-19.2%	446,418	598,733	-25.4%
<b>DOC Coal Trade (000 Tons)</b>						
<b>Exports:</b>	<b>September 2019</b>			<b>Jan - Sep 2019</b>		
			<b>% Chng</b>			<b>% Chng</b>
Metallurgical	3,543	4,794	-26.1%	30,855	42,476	-27.4%
Steam Bit. *	1,820	2,891	-37.0%	18,970	29,712	-36.2%
Lignite	10	9	11.1%	70	69	1.4%
Anthracite	7	5	40.0%	158	232	-31.9%
<b>Total</b>	<b>5,380</b>	<b>7,699</b>	<b>-30.1%</b>	<b>50,053</b>	<b>72,489</b>	<b>-31.0%</b>
<b>Imports:</b>	501	651	-23.0%	3,773	4,974	-24.1%
	<b>Week Ended</b>			<b>Cumulative Week 1 to</b>		
	<b>11/28/20</b>	<b>11/30/19</b>	<b>% Chng</b>	<b>11/28/20</b>	<b>11/30/19</b>	<b>% Chng</b>
<b>EI Electric Total Output (Mil. Kwh)</b>	68,010	70,815	-4.0%	3,616,006	3,737,496	-3.3%
<b>EI Coal Region Output (Mil. Kwh)</b>	58,123	60,313	-3.6%	3,124,133	3,238,465	-3.5%
<b>AISI Raw Steel Output (000 Tons)</b>	1,561	1,823	-14.4%	72,186	88,446	-18.4%

## EIA (S&P Global) AVERAGE COAL & NATURAL GAS SPOT PRICES Dollars Per Short Ton

Average Coal Spot Prices (\$/Short Ton)	Week Ending			Natural Gas Spot Prices (\$/MMBtu)	
	11/20/20	11/13/20	% Chng	Wed.	11/18/20
Central App, 12,500 Btu, 1.2 SO <sub>2</sub>	\$52.75	\$52.75	0.0%	Henry Hub	2.36
Northern App, 13,000 Btu, < 3.0 SO <sub>2</sub>	43.80	43.80	0.0%	New York	1.70
Illinois Basin, 11,800, 5.0 SO <sub>2</sub>	34.10	34.10	0.0%	Chicago	2.08
Powder River Basin, 8,800 Btu 0.8 SO <sub>2</sub>	11.60	11.60	0.0%	Cal.Comp.Avg.	3.16
Uinta Basin, 11,700 Btu, 0.8 SO <sub>2</sub>	29.95	29.95	0.0%		

Coal exports and Imports are "as reported" (not revised); \*Steam excludes lignite & anthracite. All data in this report are preliminary and subject to revision. r/ revised.

Sources: EIA; Edison Electric Institute; American Iron & Steel Institute; Association of American Railroads; Dept. of Commerce; S&P Global; NGI's Daily Gas Price Index



**NMA**  
THE AMERICAN RESOURCE

National Mining Association Web Site: [http:// www.nma.org](http://www.nma.org)

<b>EIA Estimated Weekly U.S. Coal Production Overview</b>									
	<b>Week Ended</b>			<b>Year to Date</b>			<b>52 Weeks Ended</b>		
<b>Coal-Producing Region &amp; State</b> (thousand short tons)	11/28/2020 (week 48)	11/21/2020 (week 47)	11/30/2019 (week 48)	11/28/2020	11/28/2019	% Change	11/28/2020	11/30/2019	% Change
Alabama	209	230	214	10,846	13,103	-17.2	11,807	14,332	-17.6
Alaska	19	19	17	890	892	-0.2	968	990	-2.2
Arizona	.	.	.	.	3,843	-100.0	.	4,357	.
Colorado	186	195	205	8,916	11,888	-25.0	9,839	13,012	-24.4
Illinois	563	600	656	28,838	42,764	-32.6	31,786	46,882	-32.2
Indiana	395	420	504	18,996	29,151	-34.8	21,262	32,190	-33.9
<b>Kentucky Total</b>	<b>445</b>	<b>465</b>	<b>548</b>	<b>21,383</b>	<b>33,496</b>	<b>-36.2</b>	<b>23,845</b>	<b>36,787</b>	<b>-35.2</b>
Eastern (KY)	148	156	198	7,480	12,926	-42.1	8,371	14,293	-41.4
Western (KY)	296	310	350	13,902	20,570	-32.4	15,474	22,494	-31.2
Louisiana	26	26	23	1,088	1,426	-23.7	1,193	1,525	-21.8
Maryland	24	25	25	1,102	1,351	-18.4	1,216	1,470	-17.3
Mississippi	45	47	43	2,282	2,494	-8.5	2,473	2,720	-9.1
Missouri	3	3	3	138	175	-21.3	151	197	-23.4
Montana	573	595	597	25,855	31,618	-18.2	28,537	35,264	-19.1
New Mexico	206	220	243	9,803	13,376	-26.7	10,895	14,714	-26.0
North Dakota	530	583	501	23,588	24,605	-4.1	25,840	27,075	-4.6
Ohio	81	86	117	3,839	7,220	-46.8	4,366	8,036	-45.7
Oklahoma	2	2	3	50	211	-76.4	65	242	-73.1
<b>Pennsylvania Total</b>	<b>756</b>	<b>810</b>	<b>896</b>	<b>33,661</b>	<b>45,801</b>	<b>-26.5</b>	<b>37,687</b>	<b>50,094</b>	<b>-24.8</b>
Anthracite (PA)	57	61	55	2,251	2,348	-4.1	2,499	2,527	-1.1
Bituminous (PA)	699	749	841	31,410	43,454	-27.7	35,188	47,567	-26.0
Tennessee	9	10	8	292	398	-26.5	328	418	-21.5
Texas	367	383	383	16,676	21,477	-22.4	18,398	23,380	-21.3
Utah	221	231	227	11,172	13,320	-16.1	12,194	14,479	-15.8
Virginia	200	206	203	9,321	11,502	-19.0	10,232	12,597	-18.8
<b>West Virginia Total</b>	<b>1,286</b>	<b>1,366</b>	<b>1,512</b>	<b>61,454</b>	<b>86,206</b>	<b>-28.7</b>	<b>68,250</b>	<b>94,087</b>	<b>-27.5</b>
Northern (WV)	662	709	789	31,618	43,312	-27.0	35,164	47,330	-25.7
Southern (WV)	624	657	723	29,836	42,894	-30.4	33,087	46,756	-29.2
Wyoming	4,431	4,629	4,906	199,074	253,494	-21.5	221,118	279,793	-21.0
<b>Appalachian Total</b>	<b>2,713</b>	<b>2,888</b>	<b>3,173</b>	<b>127,996</b>	<b>178,506</b>	<b>-28.3</b>	<b>142,256</b>	<b>195,327</b>	<b>-27.2</b>
<b>Interior Total</b>	<b>1,697</b>	<b>1,790</b>	<b>1,966</b>	<b>81,971</b>	<b>118,270</b>	<b>-30.7</b>	<b>90,803</b>	<b>129,630</b>	<b>-30.0</b>
<b>Western Total</b>	<b>6,165</b>	<b>6,473</b>	<b>6,697</b>	<b>279,299</b>	<b>353,036</b>	<b>-20.9</b>	<b>309,390</b>	<b>389,685</b>	<b>-20.6</b>
<b>East of Mississippi River</b>	<b>4,012</b>	<b>4,264</b>	<b>4,726</b>	<b>192,015</b>	<b>273,486</b>	<b>-29.8</b>	<b>213,251</b>	<b>299,612</b>	<b>-28.8</b>
<b>West of Mississippi River</b>	<b>6,562</b>	<b>6,886</b>	<b>7,110</b>	<b>297,250</b>	<b>376,325</b>	<b>-21.0</b>	<b>329,198</b>	<b>415,030</b>	<b>-20.7</b>
Bituminous and Lignite	10,518	11,090	11,781	487,015	647,464	-24.8	539,951	712,115	-24.2
Anthracite	57	61	55	2,251	2,348	-4.1	2,499	2,527	-1.1
<b>U.S. Total</b>	<b>10,575</b>	<b>11,151</b>	<b>11,836</b>	<b>489,266</b>	<b>649,812</b>	<b>-24.7</b>	<b>542,449</b>	<b>714,642</b>	<b>-24.1</b>
Railroad Cars Loaded	59,775	63,032	67,858	2,742,855	3,684,311	-25.6	3,050,148	4,065,199	-25.0

Source: Energy Information Administration



## Weekly Electric Output

Volume 88 No. 48

### OUTPUT FOR WEEK ENDED - Nov 28, 2020

Dec 02, 2020

The net available amount of electric energy distributed by the Total Electric Utility Industry\* for the week ended Saturday, **Nov 28, 2020** was **68,010** gigawatthours (GWh), according to the Edison Electric Institute. This is equivalent to **170** on the weekly electric output index.

### WEEKLY ELECTRIC OUTPUT BY GEOGRAPHIC DIVISION

(48 CONTIGUOUS STATES)

	Week Ended November 28		52 Weeks Ended November 28	
	GWh Output	% Increase Over Corresponding Week of 2019	GWh Output	% Increase Over Corresponding Period of 2019
New England	2,110	-2.5	114,612	-2.1
Mid-Atlantic	6,957	-9.1	410,196	-4.2
Central Industrial	11,138	-5.0	631,142	-4.6
West Central	5,703	-2.6	321,230	-2.7
Southeast	16,495	-2.7	980,905	-4.9
South Central	12,601	-0.7	755,046	-1.8
Rocky Mountain	5,229	-4.0	287,234	1.4
Pacific Northwest	3,179	-9.9	153,973	-2.2
Pacific Southwest	4,598	-4.4	267,041	-0.2
Total United States	68,010	-4.0	3,921,379	-3.1

### WEEKLY ELECTRIC OUTPUT IN PREVIOUS WEEKS--GWh

Week Ended	2020	Week Ended	2019	% Inc. (20/19)	52 Weeks Ended	2020	% Inc. (20/19)
Nov 07	68,843	Nov 09	72,007	-4.4	Nov 07	3,933,808	-2.9
Nov 14	69,222	Nov 16	76,452	-9.5	Nov 14	3,926,579	-3.1
Nov 21	69,338	Nov 23	71,732	-3.3	Nov 21	3,924,184	-3.1
Nov 28	68,010	Nov 30	70,815	-4.0	Nov 28	3,921,379	-3.1
<b>Nov 28</b>	<b>3,616,006</b>	<b>Nov 30</b>	<b>3,737,496</b>	<b>-3.3</b>	<b>YEAR TO DATE, FIRST 48 WEEKS</b>		

### WEEKLY ELECTRIC OUTPUT INDEX--TOTAL U.S.\*

SEASONALLY ADJUSTED 1982 = 100

Week Ended	2020	Week Ended	2019	Week Ended	2018
Nov 07	178	Nov 09	188	Nov 10	180
Nov 14	174	Nov 16	195	Nov 17	191
Nov 21	177	Nov 23	185	Nov 24	178
Nov 28	170	Nov 30	178	Dec 01	185

\* Excludes Alaska and Hawaii.

+ Includes investor-owned companies, cooperatives and government-owned utilities.

Copyright © 2020 Edison Electric Institute. All rights reserved.

**EEl WEEKLY ELECTRIC OUTPUT BY GEOGRAPHIC DIVISION  
(48 CONTIGUOUS STATES)**

	Week Ended			NMA CUMULATIVE JANUARY WEEK ONE TO			52 Weeks Ended		
	28-Nov 2020 GWh Output	30-Nov 2019 GWh Output	% Increase Over Corresponding Week	28-Nov 2020 GWh Output	30-Nov 2019 GWh Output	% Increase Over Corresponding Week	28-Nov 2020 GWh Output	30-Nov 2019 GWh Output	% Increase Over Corresponding Week
<b>New England</b>	2,110	2,164	-2.5%	<b>105,012</b>	<b>107,536</b>	<b>-2.3%</b>	114,612	117,018	-2.1%
<b>Mid-Atlantic</b>	6,957	7,653	-9.1%	<b>376,422</b>	<b>394,744</b>	<b>-4.6%</b>	410,196	428,190	-4.2%
<b>Central Industrial</b>	11,138	11,724	-5.0%	<b>580,502</b>	<b>609,837</b>	<b>-4.8%</b>	631,142	661,691	-4.6%
<b>West Central</b>	5,703	5,852	-2.5%	<b>295,827</b>	<b>304,467</b>	<b>-2.8%</b>	321,230	330,175	-2.7%
<b>Southeast</b>	16,495	16,953	-2.7%	<b>906,213</b>	<b>952,753</b>	<b>-4.9%</b>	980,905	1,031,129	-4.9%
<b>South Central</b>	12,601	12,684	-0.7%	<b>700,712</b>	<b>715,554</b>	<b>-2.1%</b>	755,046	769,214	-1.8%
<b>Rocky Mountain</b>	5,229	5,447	-4.0%	<b>264,457</b>	<b>261,110</b>	<b>1.3%</b>	287,234	283,341	1.4%
<b>Pacific Northwest</b>	3,179	3,530	-9.9%	<b>139,819</b>	<b>143,346</b>	<b>-2.5%</b>	153,973	157,505	-2.2%
<b>Pacific Southwest</b>	4,598	4,808	-4.4%	<b>247,043</b>	<b>248,153</b>	<b>-0.4%</b>	267,041	267,684	-0.2%
<b>Total United States <sup>1/</sup></b>	<u>68,010</u>	<u>70,815</u>	-4.0%	<u><b>3,616,007</b></u>	<u><b>3,737,500</b></u>	<b>-3.3%</b>	3,921,379	4,045,947	-3.1%
<b>Coal Regions Only <sup>2/</sup></b>	58,123	60,313	-3.6%	<b>3,124,133</b>	<b>3,238,465</b>	<b>-3.5%</b>	3,385,753	3,503,740	-3.4%

Notes: EEl output data are an estimate of electricity load made available for distribution derived as weekly net generation + purchases from non-utilities + net imports - exports - sales for resale. It is not meant to be a measure of electricity generation for the U.S. EEl survey data represent the majority of national distribution (large utilities, large government power projects, some independent and large municipal power projects). The remaining segment of the industry (smaller producers) is estimated. Non-utility generation is captured via direct sales to utilities.

<sup>1/</sup> Excludes Alaska and Hawaii

<sup>2/</sup> Excludes New England and Pacific regions

SOURCE: Edison Electric Institute (EEl), *Weekly Electric Output Report*.

AMERICAN IRON AND STEEL INSTITUTE  
 25 Massachusetts Avenue, NW, Suite 800  
 Washington, D.C. 20001

November 30, 2020

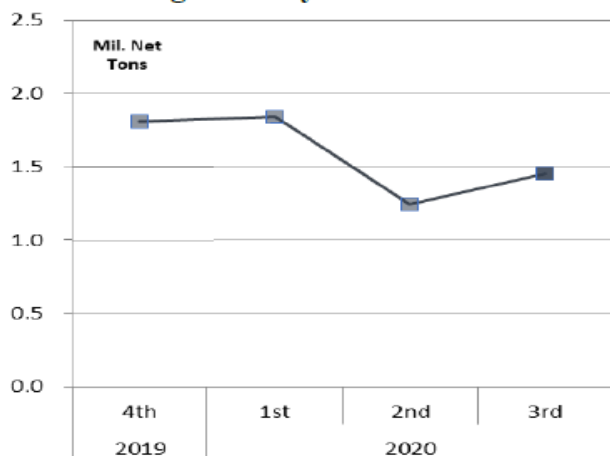
**ESTIMATED WEEKLY RAW STEEL\* PRODUCTION**

<u>Period</u>	<u>Thousand Net Tons</u>	<u>Percent Change from Previous Period</u>	<u>Percent Capability Utilization**</u>	<u>Production by District</u>		
				<u>Week Ending Nov. 28</u>	<u>Week Ending Nov. 21</u>	
<b><u>Week Ending</u></b>				North East	129	136
				Great Lakes	549	541
November 28, 2020	1,561	-1.3	70.6	Midwest	162	170
November 28, 2019	1,823	-14.4	78.8	Southern	655	665
November 21, 2020	1,582	0.1	71.5	Western	66	70
				<b>Total</b>	<b>1,561</b>	<b>1,582</b>
<b><u>Year-to-Date +</u></b>						
November 28, 2020	72,186	-18.4	67.2			
November 28, 2019	88,446	-	80.0			

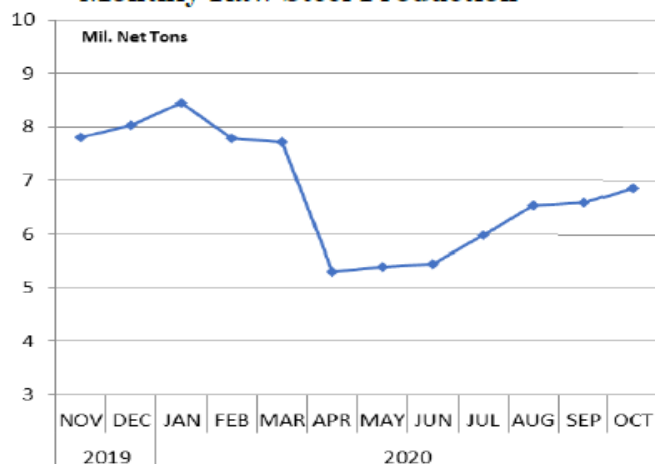
\*Raw steel production tonnage included in this report is estimated based on a sampling of steel producers (50% of domestic producers). Therefore, this report should be used primarily to assess production trends. The AISI production report "AIS 7," produced monthly and available by subscription, provides a more accurate summary of steel production based on data supplied by companies representing approximately 75% of U.S. production capacity plus includes revisions for previous months.

NOTE: Capacity for the fourth quarter 2020 is approximately 29.1 million net tons vs. 30.4 million net tons for the same period last year, and 29.4 million tons for the third quarter of 2020.

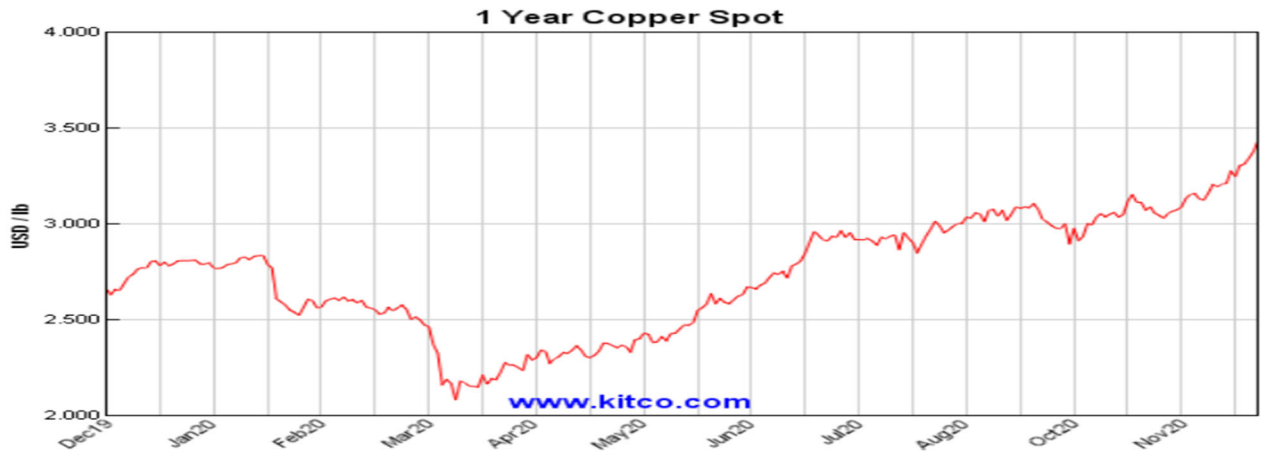
**Average Weekly Raw Steel Production**



**Monthly Raw Steel Production**



\*Steel in the first solid state after melting suitable for further processing or sale, including ingots, steel for castings and strand or pressure cast blooms, slabs or other product forms. \*\* Based on tonnage capability to produce raw steel for a sustained full order book.



Source: Kitco website - [www.kitco.com/connecting.html](http://www.kitco.com/connecting.html)

### U.S. Rail Traffic<sup>1</sup> Week 48, 2020 – Ended November 28, 2020

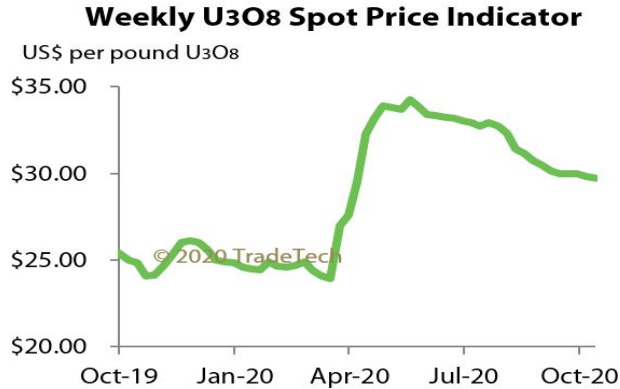
	This Week		Year-To-Date		
	Cars	vs 2019	Cumulative	Avg/wk <sup>2</sup>	vs 2019
<b>Total Carloads</b>	<b>206,288</b>	<b>-4.1%</b>	<b>10,380,769</b>	<b>216,266</b>	<b>-13.8%</b>
Chemicals	28,628	3.2%	1,473,446	30,697	-4.2%
Coal	59,775	-11.8%	2,772,941	57,770	-25.5%
Farm Products excl. Grain, and Food	14,519	2.1%	741,449	15,447	-0.7%
Forest Products	8,847	-2.1%	445,461	9,280	-5.4%
Grain	25,099	23.0%	1,061,943	22,124	2.6%
Metallic Ores and Metals	18,839	-4.1%	869,901	18,123	-16.8%
Motor Vehicles and Parts	11,994	-7.4%	608,279	12,672	-21.1%
Nonmetallic Minerals	22,173	-7.4%	1,426,584	29,721	-13.4%
Petroleum and Petroleum Products	9,071	-24.3%	524,448	10,926	-13.8%
Other	7,343	-0.6%	456,317	9,507	-0.8%
<b>Total Intermodal Units</b>	<b>246,504</b>	<b>11.2%</b>	<b>12,340,929</b>	<b>257,103</b>	<b>-3.1%</b>
<b>Total Traffic</b>	<b>452,792</b>	<b>3.7%</b>	<b>22,721,698</b>	<b>473,369</b>	<b>-8.3%</b>

<sup>1</sup> Excludes U.S. operations of Canadian Pacific, CN and GMXT.

<sup>2</sup> Average per week figures may not sum to totals as a result of independent rounding.

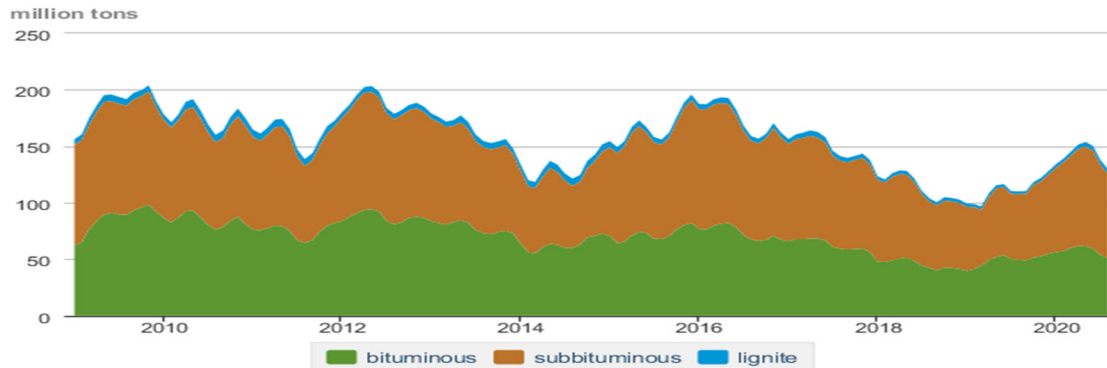
Source: AAR website - <https://www.aar.org/Pages/NEWS-and-EVENTS.aspx>

### Trade Tech's and UX's Uranium Price Indicators



Sources: Trade Tech, Uranium Info Website – [www.uranium.info](http://www.uranium.info) ; Source: Ux Consulting Co., LLC – <http://www.uxc.com>

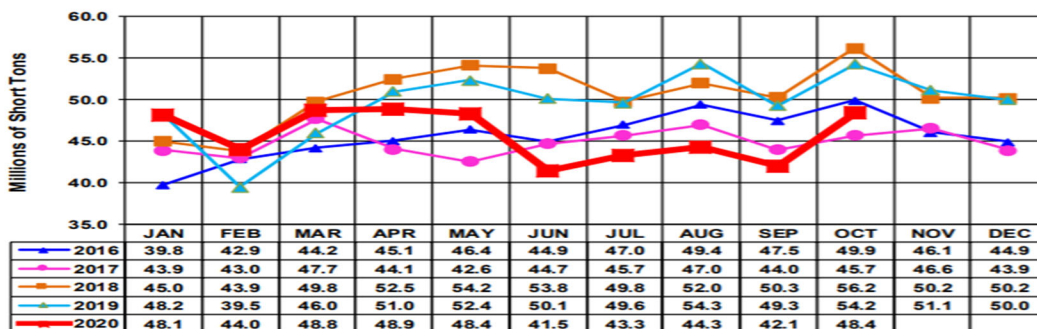
### Coal stocks by type, January 2009 - August 2020



Source: U.S. Energy Information Administration

Source: Energy Information Administration, Electric Monthly Update

### All Commodities Monthly Indicator for Internal U.S. Waterways



For the Internal U.S. Waterway Monthly Indicators, estimates for the most recent month are based on lock performance management data. The estimates will be superseded by actual data as it becomes available.

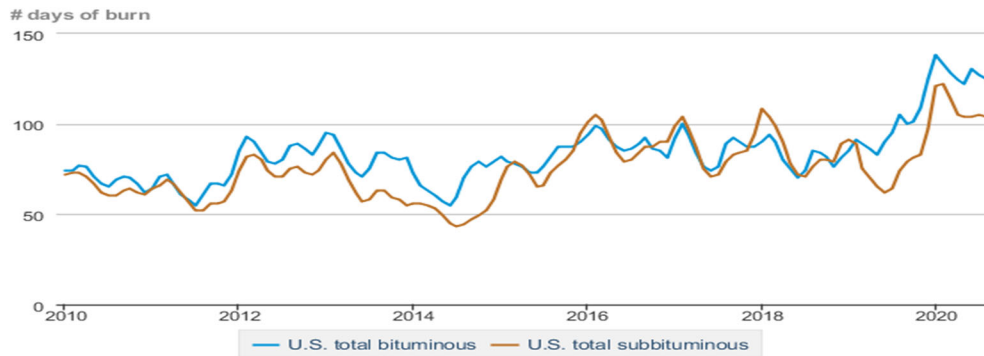
Source: Waterborne Commerce Statistics Center

**Average weekly coal commodity spot prices**  
dollars per short ton

	Week ending					Week ago
	10/23/20	10/30/20	11/06/20	11/13/20	11/20/20	change
Central Appalachia 12,500 Btu, 1.2 SO <sub>2</sub>	\$59.50	\$51.20	\$51.20	\$52.75	\$52.75	\$0.00
Northern Appalachia 13,000 Btu, < 3.0 SO <sub>2</sub>	\$42.45	\$42.50	\$42.50	\$43.80	\$43.80	\$0.00
Illinois Basin 11,800 Btu, 5.0 SO <sub>2</sub>	\$34.05	\$34.10	\$34.10	\$34.10	\$34.10	\$0.00
Powder River Basin 8,800 Btu, 0.8 SO <sub>2</sub>	\$11.75	\$11.65	\$11.65	\$11.60	\$11.60	\$0.00
Uinta Basin 11,700 Btu, 0.8 SO <sub>2</sub>	\$29.10	\$30.05	\$30.05	\$29.95	\$29.95	\$0.00

Source: Energy Information Administration (with permission from S&P Global), *Coal Market Report*

**Days of burn by non-lignite coal rank, January 2010 - August 2020**



 Source: U.S. Energy Information Administration

Source: Energy Information Administration, *Electricity Monthly Update Report*

**Temperature – heating & cooling degree days (week ending Nov 12)**

Region	HDD Current	HDD deviation from:		CDD Current	CDD deviation from:	
		normal	last year		normal	last year
New England	50	-99	-155	0	0	0
Middle Atlantic	48	-92	-151	0	0	0
E N Central	69	-89	-186	1	1	1
W N Central	108	-66	-158	0	0	0
South Atlantic	23	-68	-108	35	20	19
E S Central	29	-64	-129	10	8	10
W S Central	20	-38	-92	29	20	26
Mountain	163	7	28	3	1	-3
Pacific	118	43	88	0	-1	0
United States	73	-49	-94	11	7	7

Note: HDD = heating degree day; CDD = cooling degree day

Source: National Oceanic and Atmospheric Administration

Source: Energy Information Administration, *Natural Gas Weekly Update*.

USGS Production of Selected Mineral Commodities	2020 Year to Date - 2nd Quarter	2019 Year to Date - 2nd Quarter	Percent Change
Aluminum, secondary (000 Mt.)	410.0	419.0	-2%
Cement (Mil. Mt.)	41.5	40.2	3%
Copper (000 Mt.)	590.0	615.0	-4%
Gold (Mt.)	91.9	100.0	-8%
Gypsum (Mil. Mt.)	8.5	8.7	-2%
Iron Ore (Mil. Mt.)	17.4	23.3	-25%
Lead (000 Mt.)	137.0	136.0	1%
Molybdenum (000 Mt.)	29.2	21.7	35%
Phosphate rock (Mil. Mt.)	11.9	11.3	5%
Sand & gravel, construction (Mil. Mt.)	428.0	431.0	-1%
Silver (Mt.)	490.0	482.0	2%
Soda ash (Mil. Mt.)	5.1	5.8	-12%
Stone, crushed (Mil. Mt.)	694.0	699.0	-1%
Zinc (000 Mt.)	308.0	362.0	-15%

Source: U.S. Geological Survey, Mineral Industry Surveys. Percent change based on USGS rounded numbers. 2020 data are preliminary estimates. W - withheld, N/A - not available

### Natural gas spot prices (Henry Hub)

dollars per million British thermal units



eia Source: Natural Gas Intelligence

Source: Energy Information Administration, *Natural Gas Weekly*.

### EIA Coal Stocks and Average Number of Days of Burn (Power Sector)

Coal stocks and average number of days of burn for non-lignite coal by region (electric power sector)

Zone	Coal	September 2020		September 2019		% Change of Stocks	August 2020		% Change of Stocks
		Stocks (1000 tons)	Days of Burn	Stocks (1000 tons)	Days of Burn		Stocks (1000 tons)	Days of Burn	
Northeast	Bituminous	3,910	284	3,897	191	0.3%	3,691	278	5.9%
	Subbituminous	160	159	162	159	-1.2%	160	185	0.0%
South	Bituminous	17,908	105	21,293	104	-15.9%	19,740	114	-9.3%
	Subbituminous	6,060	83	4,676	61	29.6%	5,936	76	2.1%
Midwest	Bituminous	13,327	112	10,242	85	30.1%	13,059	115	2.1%
	Subbituminous	28,696	125	22,369	93	28.3%	27,509	125	4.3%
West	Bituminous	3,815	160	3,408	73	11.9%	3,910	163	-2.4%
	Subbituminous	23,383	92	20,078	72	16.5%	24,495	92	-4.5%
U.S. Total	Bituminous	38,960	116	38,840	100	0.3%	40,400	125	-3.6%
	Subbituminous	58,299	105	47,285	79	23.3%	58,099	104	0.3%

Source: Energy Information Administration, *Electricity Monthly Update*

### EIA Working Natural Gas Underground Storage

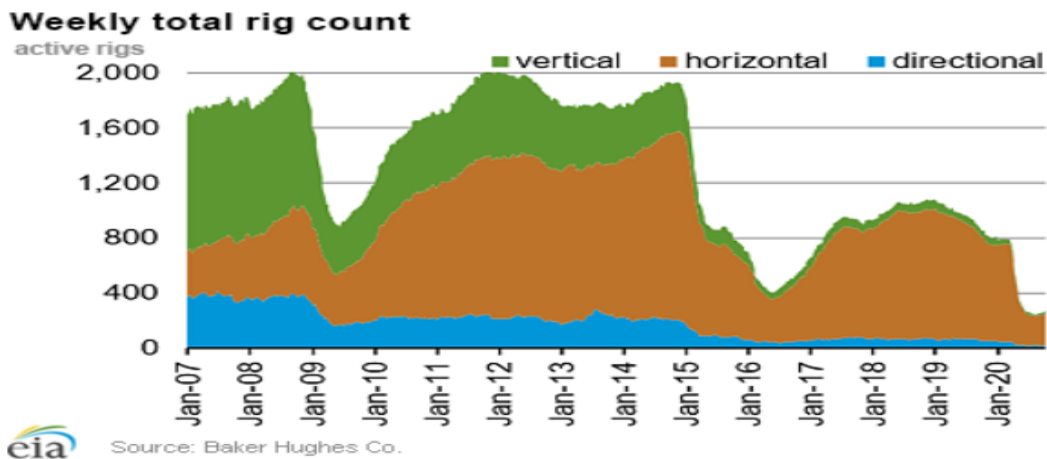
**Working gas in underground storage**

Region	Stocks billion cubic feet (Bcf)		
	2020-11-13	2020-11-06	change
East	953	942	11
Midwest	1,139	1,127	12
Mountain	241	243	-2
Pacific	319	322	-3
South Central	1,306	1,293	13
<b>Total</b>	<b>3,958</b>	<b>3,927</b>	<b>31</b>

Source: Form EIA-912, *Weekly Underground Natural Gas Storage Report*

Source: Energy Information Administration, *Natural Gas Weekly Update*

### EIA Natural Gas Rig Count



Source: Energy Information Administration, *Natural Gas Weekly Update*

### EIA Oil and Natural Gas Rig Productivity

Region	New-well oil production per rig barrels/day			New-well gas production per rig thousand cubic feet/day		
	November 2020	December 2020	change	November 2020	December 2020	change
Anadarko	1,003	953	(50)	6,248	5,936	(312)
Appalachia	173	175	2	26,700	26,727	27
Bakken	2,300	1,917	(383)	3,036	2,588	(448)
Eagle Ford	2,521	2,496	(25)	7,944	7,150	(794)
Haynesville	20	20	-	11,235	11,237	2
Niobrara	2,044	2,024	(20)	5,591	5,535	(56)
Permian	1,282	1,217	(65)	2,199	2,089	(110)
Rig-weighted average	1,033	1,039	6	7,545	7,258	(287)

Source: Energy Information Administration, *Drilling Productivity Report*