

---

# NATIONAL MINING ASSOCIATION

## *Weekly Statistical Summary*

---

**December 11, 2020 Edition**  
**(Data for Week Ending December 5, 2020)**

**Prepared by**  
**National Mining Association**



101 Constitution Avenue, NW, Suite 500 East  
Washington, DC, 20001  
Phone (202) 463-2600  
<http://www.nma.org>

# NMA Weekly Statistical Summary

Vol. 58, No. 49  
Dated 12/11/20

## PRODUCTION, CONSUMPTION & TRADE

	Week Ended			* Cumulative Jan 1 to		
	12/05/20	12/07/19	% Chng	12/05/20	12/05/19	% Chng
<b>EIA Coal Production (000 Tons):</b>						
Week Ended/Year to Date	11,526	12,628	-8.7%	501,032	662,218	-24.3%
52 Weeks Ended	541,587	712,121	-23.9%			
AAR Coal Rail Cars Loaded:	65,192	72,402	-10.0%	2,808,048	3,755,432	-25.2%
Coal Production Month Ended - Nov	<b>November 20/19</b> 45,960	<b>% Chng</b> 54,393	<b>% Chng</b> -15.5%	<b>Jan - Nov 20/19</b> 492,618	<b>% Chng</b> 653,126	<b>% Chng</b> -24.6%
<b>DOC Coal Trade (000 Tons)</b>						
<b>Exports:</b>	<b>October 20/19</b>			<b>Jan - Oct 20/19</b>		
			<b>% Chng</b>			<b>% Chng</b>
Metallurgical	3,416	3,835	-10.9%	34,272	46,311	-26.0%
Steam Bit. *	1,623	2,581	-37.1%	20,593	32,293	-36.2%
Lignite	7	9	-22.2%	77	78	-1.3%
Anthracite	4	7	-42.9%	162	239	-32.2%
<b>Total</b>	<b>5,050</b>	<b>6,432</b>	<b>-21.5%</b>	<b>55,104</b>	<b>78,921</b>	<b>-30.2%</b>
<b>Imports:</b>	263	742	-64.6%	4,036	5,716	-29.4%
	<b>Week Ended</b>			<b>Cumulative Week 1 to</b>		
	<b>12/05/20</b>	<b>12/07/19</b>	<b>% Chng</b>	<b>12/05/20</b>	<b>12/07/19</b>	<b>% Chng</b>
<b>EI Electric Total Output (Mil. Kwh)</b>	75,942	76,146	-0.3%	3,691,948	3,813,642	-3.2%
<b>EI Coal Region Output (Mil. Kwh)</b>	65,451	65,218	0.4%	3,189,584	3,303,683	-3.5%
<b>AISI Raw Steel Output (000 Tons)</b>	1,579	1,818	-13.1%	73,765	90,264	-18.3%

## EIA (S&P Global) AVERAGE COAL & NATURAL GAS SPOT PRICES Dollars Per Short Ton

Average Coal Spot Prices (\$/Short Ton)	Week Ending			Natural Gas Spot Prices (\$/MMBtu)	
	12/04/20	11/27/20	% Chng	Wed.	12/2/20
Central App, 12,500 Btu, 1.2 SO <sub>2</sub>	\$54.35	\$52.75	3.0%	Henry Hub	2.70
Northern App, 13,000 Btu, < 3.0 SO <sub>2</sub>	45.15	43.80	3.1%	New York	2.45
Illinois Basin, 11,800, 5.0 SO <sub>2</sub>	34.10	34.10	0.0%	Chicago	2.62
Powder River Basin, 8,800 Btu 0.8 SO <sub>2</sub>	11.55	11.60	-0.4%	Cal.Comp.Avg.	3.16
Uinta Basin, 11,700 Btu, 0.8 SO <sub>2</sub>	29.85	29.95	-0.3%		

Coal exports and Imports are "as reported" (not revised); \*Steam excludes lignite & anthracite. All data in this report are preliminary and subject to revision. r/ revised.

Sources: EIA; Edison Electric Institute; American Iron & Steel Institute; Association of American Railroads; Dept. of Commerce; S&P Global; NGI's Daily Gas Price Index



**NMA**  
THE AMERICAN RESOURCE

National Mining Association Web Site: [http:// www.nma.org](http://www.nma.org)

## EIA Estimated Weekly U.S. Coal Production Overview

Coal-Producing Region & State (thousand short tons)	Week Ended			Year to Date			52 Weeks Ended		
	12/5/2020 (week 49)	11/28/2020 (week 48)	12/7/2019 (week 49)	12/5/2020	12/5/2019	% Change	12/5/2020	12/7/2019	% Change
Alabama	233	209	228	11,326	13,327	-15.0	12,059	14,272	-15.5
Alaska	24	19	19	932	910	2.5	992	985	0.7
Arizona	.	.	.	.	3,843	-100.0	.	4,230	.
Colorado	203	186	219	9,213	12,103	-23.9	9,916	12,969	-23.5
Illinois	605	563	700	29,304	43,452	-32.6	31,551	46,613	-32.3
Indiana	418	395	538	19,032	29,680	-35.9	20,760	32,014	-35.2
<b>Kentucky Total</b>	<b>493</b>	<b>445</b>	<b>585</b>	<b>22,205</b>	<b>34,070</b>	<b>-34.8</b>	<b>24,082</b>	<b>36,599</b>	<b>-34.2</b>
Eastern (KY)	158	148	211	7,542	13,133	-42.6	8,221	14,182	-42.0
Western (KY)	335	296	373	14,662	20,937	-30.0	15,861	22,418	-29.2
Louisiana	23	26	25	833	1,450	-42.6	913	1,527	-40.2
Maryland	24	24	27	1,054	1,377	-23.5	1,140	1,469	-22.4
Mississippi	54	45	45	2,666	2,539	5.0	2,812	2,712	3.7
Missouri	3	3	3	147	178	-17.6	157	195	-19.5
Montana	607	573	637	25,084	32,244	-22.2	27,130	35,044	-22.6
New Mexico	229	206	259	10,085	13,630	-26.0	10,918	14,661	-25.5
North Dakota	599	530	535	25,184	25,130	0.2	26,901	27,036	-0.5
Ohio	84	81	125	3,564	7,343	-51.5	3,965	7,968	-50.2
Oklahoma	1	2	4	17	215	-92.0	29	238	-87.8
<b>Pennsylvania Total</b>	<b>809</b>	<b>756</b>	<b>956</b>	<b>33,677</b>	<b>46,741</b>	<b>-27.9</b>	<b>36,747</b>	<b>50,055</b>	<b>-26.6</b>
Anthracite (PA)	59	57	59	2,250	2,405	-6.4	2,439	2,545	-4.2
Bituminous (PA)	750	699	897	31,426	44,335	-29.1	34,307	47,510	-27.8
Tennessee	10	9	9	178	406	-56.2	205	422	-51.4
Texas	399	367	409	17,663	21,879	-19.3	18,976	23,347	-18.7
Utah	273	221	242	12,163	13,559	-10.3	12,942	14,452	-10.4
Virginia	221	200	216	9,123	11,714	-22.1	9,818	12,557	-21.8
<b>West Virginia Total</b>	<b>1,358</b>	<b>1,286</b>	<b>1,614</b>	<b>62,226</b>	<b>87,791</b>	<b>-29.1</b>	<b>67,408</b>	<b>93,864</b>	<b>-28.2</b>
Northern (WV)	716	662	842	33,211	44,139	-24.8	35,915	47,237	-24.0
Southern (WV)	641	624	772	29,015	43,652	-33.5	31,494	46,627	-32.5
Wyoming	4,855	4,431	5,234	205,357	258,636	-20.6	222,166	278,890	-20.3
<b>Appalachian Total</b>	<b>2,896</b>	<b>2,713</b>	<b>3,386</b>	<b>128,689</b>	<b>181,832</b>	<b>-29.2</b>	<b>139,563</b>	<b>194,789</b>	<b>-28.4</b>
<b>Interior Total</b>	<b>1,840</b>	<b>1,697</b>	<b>2,097</b>	<b>84,324</b>	<b>120,330</b>	<b>-29.9</b>	<b>91,059</b>	<b>129,065</b>	<b>-29.4</b>
<b>Western Total</b>	<b>6,791</b>	<b>6,165</b>	<b>7,145</b>	<b>288,018</b>	<b>360,055</b>	<b>-20.0</b>	<b>310,965</b>	<b>388,267</b>	<b>-19.9</b>
<b>East of Mississippi River</b>	<b>4,309</b>	<b>4,012</b>	<b>5,042</b>	<b>194,354</b>	<b>278,440</b>	<b>-30.2</b>	<b>210,547</b>	<b>298,547</b>	<b>-29.5</b>
<b>West of Mississippi River</b>	<b>7,217</b>	<b>6,562</b>	<b>7,586</b>	<b>306,678</b>	<b>383,778</b>	<b>-20.1</b>	<b>331,039</b>	<b>413,574</b>	<b>-20.0</b>
Bituminous and Lignite	11,467	10,518	12,570	498,781	659,812	-24.4	539,147	709,576	-24.0
Anthracite	59	57	59	2,250	2,405	-6.4	2,439	2,545	-4.2
<b>U.S. Total</b>	<b>11,526</b>	<b>10,575</b>	<b>12,628</b>	<b>501,032</b>	<b>662,218</b>	<b>-24.3</b>	<b>541,587</b>	<b>712,121</b>	<b>-23.9</b>
Railroad Cars Loaded	65,192	59,775	72,402	2,808,048	3,755,432	-25.2	3,042,939	4,049,058	-24.8

Source: Energy Information Administration



# Weekly Electric Output

Volume 88 No. 49

**OUTPUT FOR WEEK ENDED - Dec 05, 2020**

**Dec 09, 2020**

The net available amount of electric energy distributed by the Total Electric Utility Industry\* for the week ended Saturday, Dec 05, 2020 was **75,942** gigawatthours (GWh), according to the Edison Electric Institute. This is equivalent to **172** on the weekly electric output index.

**WEEKLY ELECTRIC OUTPUT BY GEOGRAPHIC DIVISION**

(48 CONTIGUOUS STATES)

	Week Ended December 05		52 Weeks Ended December 05	
	GWh Output	% Increase Over Corresponding Week of 2019	GWh Output	% Increase Over Corresponding Period of 2019
New England	2,162	-11.5	114,330	-2.4
Mid-Atlantic	7,568	-10.5	409,311	-4.4
Central Industrial	12,484	-3.3	630,722	-4.6
West Central	6,270	-2.1	321,096	-2.6
Southeast	19,116	2.8	981,429	-4.7
South Central	14,341	9.0	756,236	-1.6
Rocky Mountain	5,672	-0.7	287,193	1.4
Pacific Northwest	3,474	-0.6	153,953	-2.1
Pacific Southwest	4,855	-2.7	266,905	-0.3
Total United States	75,942	-0.3	3,921,175	-3.0

**WEEKLY ELECTRIC OUTPUT IN PREVIOUS WEEKS--GWh**

Week Ended	2020	Week Ended	2019	% Inc. (20/19)	52 Weeks Ended	2020	% Inc. (20/19)
Nov 14	69,222	Nov 16	76,452	-9.5	Nov 14	3,926,579	-3.1
Nov 21	69,338	Nov 23	71,732	-3.3	Nov 21	3,924,184	-3.1
Nov 28	68,010	Nov 30	70,815	-4.0	Nov 28	3,921,379	-3.1
Dec 05	75,942	Dec 07	76,146	-0.3	Dec 05	3,921,175	-3.0
<b>Dec 05</b>	<b>3,691,948</b>	<b>Dec 07</b>	<b>3,813,642</b>	<b>-3.2</b>	<b>YEAR TO DATE, FIRST 49 WEEKS</b>		

**WEEKLY ELECTRIC OUTPUT INDEX--TOTAL U.S.\***

**SEASONALLY ADJUSTED 1982 = 100**

Week Ended	2020	Week Ended	2019	Week Ended	2018
Nov 14	174	Nov 16	195	Nov 17	191
Nov 21	177	Nov 23	185	Nov 24	178
Nov 28	170	Nov 30	178	Dec 01	185
Dec 05	172	Dec 07	173	Dec 08	185

\* Excludes Alaska and Hawaii.

+ Includes investor-owned companies, cooperatives and government-owned utilities.

Copyright © 2020 Edison Electric Institute. All rights reserved.

**EEl WEEKLY ELECTRIC OUTPUT BY GEOGRAPHIC DIVISION**  
**(48 CONTIGUOUS STATES)**

	Week Ended			NMA CUMULATIVE JANUARY WEEK ONE TO			52 Weeks Ended		
	5-Dec 2020 GWh Output	7-Dec 2019 GWh Output	% Increase Over Corresponding Week	5-Dec 2020 GWh Output	7-Dec 2019 GWh Output	% Increase Over Corresponding Week	5-Dec 2020 GWh Output	7-Dec 2019 GWh Output	% Increase Over Corresponding Week
<b>New England</b>	2,162	2,443	-11.5%	<b>107,174</b>	<b>109,979</b>	<b>-2.6%</b>	114,330	117,089	-2.4%
<b>Mid-Atlantic</b>	7,568	8,453	-10.5%	<b>383,990</b>	<b>403,197</b>	<b>-4.8%</b>	409,311	428,141	-4.4%
<b>Central Industrial</b>	12,484	12,905	-3.3%	<b>592,986</b>	<b>622,742</b>	<b>-4.8%</b>	630,722	661,037	-4.6%
<b>West Central</b>	6,270	6,403	-2.1%	<b>302,097</b>	<b>310,870</b>	<b>-2.8%</b>	321,096	329,796	-2.6%
<b>Southeast</b>	19,116	18,592	2.8%	<b>925,329</b>	<b>971,345</b>	<b>-4.7%</b>	981,429	1,029,997	-4.7%
<b>South Central</b>	14,341	13,152	9.0%	<b>715,053</b>	<b>728,706</b>	<b>-1.9%</b>	756,236	768,586	-1.6%
<b>Rocky Mountain</b>	5,672	5,713	-0.7%	<b>270,129</b>	<b>266,823</b>	<b>1.2%</b>	287,193	283,358	1.4%
<b>Pacific Northwest</b>	3,474	3,494	-0.6%	<b>143,293</b>	<b>146,840</b>	<b>-2.4%</b>	153,953	157,273	-2.1%
<b>Pacific Southwest</b>	4,855	4,991	-2.7%	<b>251,898</b>	<b>253,144</b>	<b>-0.5%</b>	266,905	267,669	-0.3%
<b>Total United States</b> <sup>1/</sup>	<u>75,942</u>	<u>76,146</u>	-0.3%	<u><b>3,691,949</b></u>	<u><b>3,813,646</b></u>	<u><b>-3.2%</b></u>	3,921,175	4,042,946	-3.0%
<b>Coal Regions Only</b> <sup>2/</sup>	65,451	65,218	0.4%	<b>3,189,584</b>	<b>3,303,683</b>	<b>-3.5%</b>	3,385,987	3,500,915	-3.3%

Notes: EEI output data are an estimate of electricity load made available for distribution derived as weekly net generation + purchases from non-utilities + net imports - exports - sales for resale. It is not meant to be a measure of electricity generation for the U.S. EEI survey data represent the majority of national distribution (large utilities, large government power projects, some independent and large municipal power projects). The remaining segment of the industry (smaller producers) is estimated. Non-utility generation is captured via direct sales to utilities.

<sup>1/</sup> Excludes Alaska and Hawaii

<sup>2/</sup> Excludes New England and Pacific regions

SOURCE: Edison Electric Institute (EEI), *Weekly Electric Output Report*.

AMERICAN IRON AND STEEL INSTITUTE  
 25 Massachusetts Avenue, NW, Suite 800  
 Washington, D.C. 20001

December 7, 2020

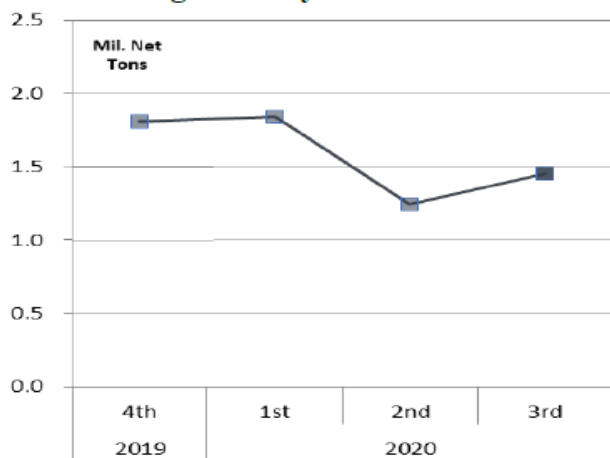
**ESTIMATED WEEKLY RAW STEEL\* PRODUCTION**

<u>Period</u>	<u>Thousand Net Tons</u>	<u>Percent Change from Previous Period</u>	<u>Percent Capability Utilization**</u>	<u>Production by District</u>		
				<u>Week Ending</u>		
				<u>Dec. 5</u>	<u>Nov. 28</u>	
<b><u>Week Ending</u></b>				North East	144	129
				Great Lakes	555	549
December 5, 2020	1,579	1.2	71.4	Midwest	169	162
December 5, 2019	1,818	-13.1	78.6	Southern	641	655
November 28, 2020	1,561	-1.3	70.6	Western	<u>70</u>	<u>66</u>
				Total	1,579	1,561
<b><u>Year-to-Date +</u></b>						
December 5, 2020	73,765	-18.3	67.2			
December 5, 2019	90,264	-	80.0			

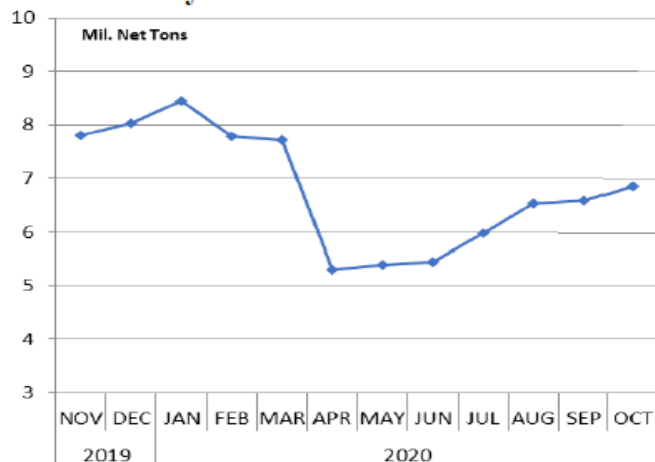
\*Raw steel production tonnage included in this report is estimated based on a sampling of steel producers (50% of domestic producers). Therefore, this report should be used primarily to assess production trends. The AISI production report "AIS 7," produced monthly and available by subscription, provides a more accurate summary of steel production based on data supplied by companies representing approximately 75% of U.S. production capacity plus includes revisions for previous months.

NOTE: Capacity for the fourth quarter 2020 is approximately 29.1 million net tons vs. 30.4 million net tons for the same period last year, and 29.4 million tons for the third quarter of 2020.

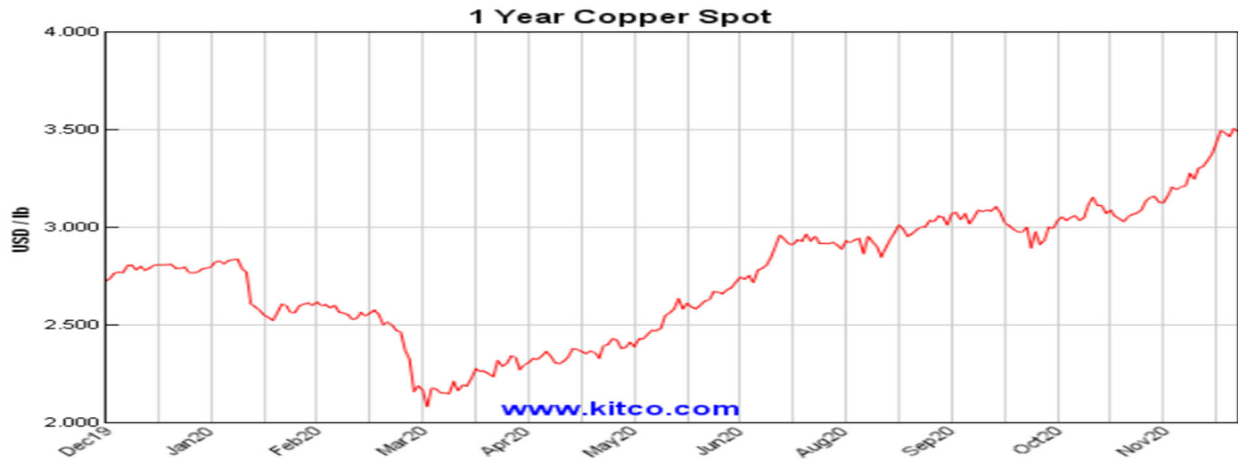
**Average Weekly Raw Steel Production**



**Monthly Raw Steel Production**



\*Steel in the first solid state after melting suitable for further processing or sale, including ingots, steel for castings and strand or pressure cast blooms, slabs or other product forms. \*\* Based on tonnage capability to produce raw steel for a sustained full order book.



Source: Kitco website - [www.kitco.com/connecting.html](http://www.kitco.com/connecting.html)

**U.S. Rail Traffic<sup>1</sup>**

Week 49, 2020 – Ended December 5, 2020

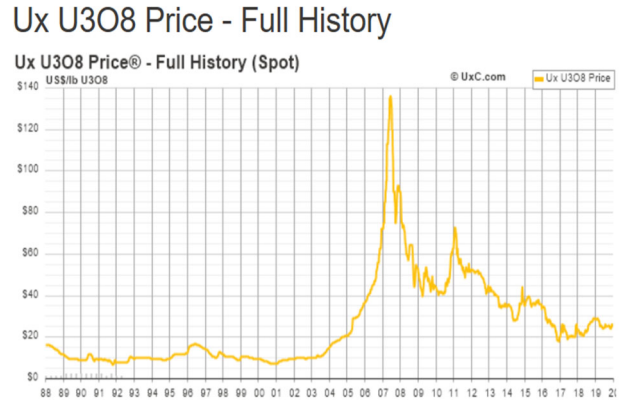
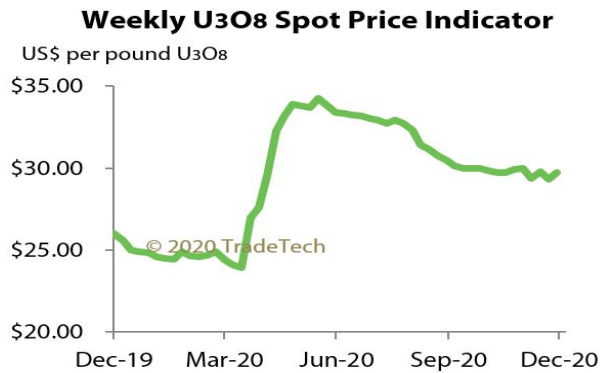
	This Week		Year-To-Date		
	Cars	vs 2019	Cumulative	Avg/wk <sup>2</sup>	vs 2019
<b>Total Carloads</b>	<b>244,986</b>	<b>-1.4%</b>	<b>10,625,755</b>	<b>216,852</b>	<b>-13.6%</b>
Chemicals	36,294	12.5%	1,509,740	30,811	-3.8%
Coal	65,192	-10.4%	2,838,133	57,921	-25.2%
Farm Products excl. Grain, and Food	17,494	8.5%	758,943	15,489	-0.5%
Forest Products	9,966	0.9%	455,427	9,294	-5.3%
Grain	27,950	20.5%	1,089,893	22,243	3.0%
Metallic Ores and Metals	19,896	-1.8%	889,797	18,159	-16.5%
Motor Vehicles and Parts	16,453	-4.2%	624,732	12,750	-20.8%
Nonmetallic Minerals	28,714	-10.3%	1,455,298	29,700	-13.4%
Petroleum and Petroleum Products	11,710	-13.8%	536,158	10,942	-13.8%
Other	11,317	0.6%	467,634	9,544	-0.8%
<b>Total Intermodal Units</b>	<b>297,217</b>	<b>10.5%</b>	<b>12,638,146</b>	<b>257,921</b>	<b>-2.9%</b>
<b>Total Traffic</b>	<b>542,203</b>	<b>4.8%</b>	<b>23,263,901</b>	<b>474,773</b>	<b>-8.1%</b>

<sup>1</sup> Excludes U.S. operations of Canadian Pacific, CN and GMXT.

<sup>2</sup> Average per week figures may not sum to totals as a result of independent rounding.

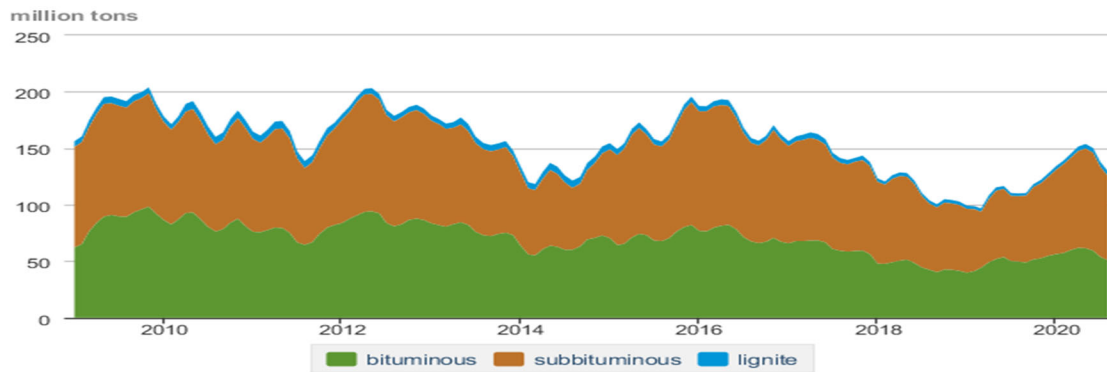
Source: AAR website - <https://www.aar.org/Pages/NEWS-and-EVENTS.aspx>

### Trade Tech's and UX's Uranium Price Indicators



Sources: Trade Tech, Uranium Info Website – [www.uranium.info](http://www.uranium.info) ; Source: Ux Consulting Co., LLC – <http://www.uxc.com>

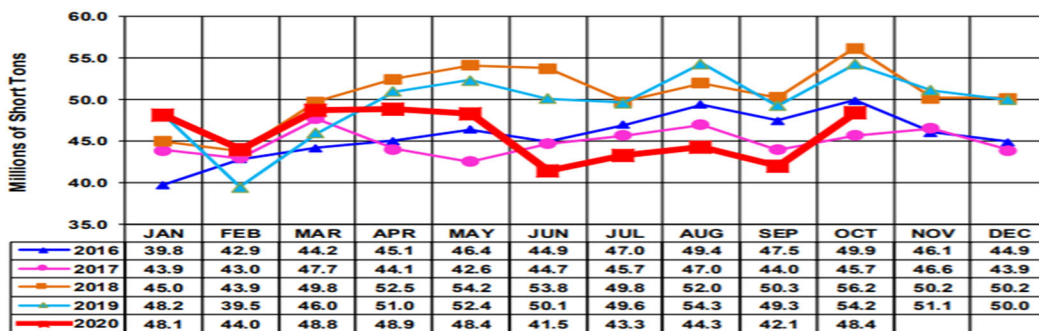
#### Coal stocks by type, January 2009 - August 2020



Source: U.S. Energy Information Administration

Source: Energy Information Administration, Electric Monthly Update

#### All Commodities Monthly Indicator for Internal U.S. Waterways



For the Internal U.S. Waterway Monthly Indicators, estimates for the most recent month are based on lock performance management data. The estimates will be superseded by actual data as it becomes available.

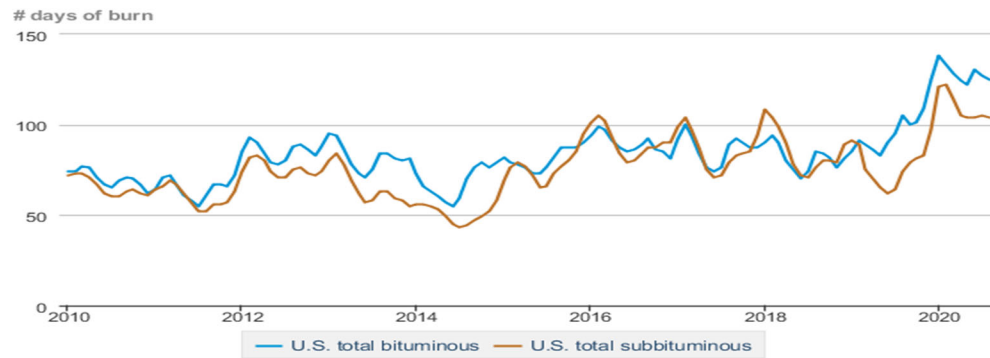
Source: Waterborne Commerce Statistics Center

**Average weekly coal commodity spot prices**  
dollars per short ton

	Week ending					Week ago
	11/06/20	11/13/20	11/20/20	11/27/20	12/04/20	change
Central Appalachia 12,500 Btu, 1.2 SO <sub>2</sub>	\$51.20	\$52.75	\$52.75	\$52.75	\$54.35	\$1.60
Northern Appalachia 13,000 Btu, < 3.0 SO <sub>2</sub>	\$42.50	\$43.80	\$43.80	\$43.80	\$45.15	\$1.35
Illinois Basin 11,800 Btu, 5.0 SO <sub>2</sub>	\$34.10	\$34.10	\$34.10	\$34.10	\$34.10	\$0.00
Powder River Basin 8,800 Btu, 0.8 SO <sub>2</sub>	\$11.65	\$11.60	\$11.60	\$11.60	\$11.55	-\$0.05
Uinta Basin 11,700 Btu, 0.8 SO <sub>2</sub>	\$30.05	\$29.95	\$29.95	\$29.95	\$29.85	-\$0.10

Source: Energy Information Administration (with permission from S&P Global), *Coal Market Report*

**Days of burn by non-lignite coal rank, January 2010 - August 2020**



 Source: U.S. Energy Information Administration

Source: Energy Information Administration, *Electricity Monthly Update Report*

**Temperature – heating & cooling degree days (week ending Nov 26)**

Region	HDD Current	HDD deviation from:		CDD Current	CDD deviation from:	
		normal	last year		normal	last year
New England	151	-30	-17	0	0	0
Middle Atlantic	128	-44	-31	0	0	0
E N Central	158	-40	-14	0	0	0
W N Central	186	-36	-8	0	0	0
South Atlantic	82	-36	-29	15	4	7
E S Central	82	-40	-16	0	-1	0
W S Central	43	-43	-17	16	12	7
Mountain	172	-21	-29	3	3	3
Pacific	96	-3	-10	0	-1	0
United States	123	-32	-18	5	2	2

Note: HDD = heating degree day; CDD = cooling degree day

Source: National Oceanic and Atmospheric Administration

Source: Energy Information Administration, *Natural Gas Weekly Update*.

USGS Production of Selected Mineral Commodities	2020 Year to Date - 2nd Quarter	2019 Year to Date - 2nd Quarter	Percent Change
Aluminum, secondary (000 Mt.)	410.0	419.0	-2%
Cement (Mil. Mt.)	41.5	40.2	3%
Copper (000 Mt.)	590.0	615.0	-4%
Gold (Mt.)	91.9	100.0	-8%
Gypsum (Mil. Mt.)	8.5	8.7	-2%
Iron Ore (Mil. Mt.)	17.4	23.3	-25%
Lead (000 Mt.)	137.0	136.0	1%
Molybdenum (000 Mt.)	29.2	21.7	35%
Phosphate rock (Mil. Mt.)	11.9	11.3	5%
Sand & gravel, construction (Mil. Mt.)	428.0	431.0	-1%
Silver (Mt.)	490.0	482.0	2%
Soda ash (Mil. Mt.)	5.1	5.8	-12%
Stone, crushed (Mil. Mt.)	694.0	699.0	-1%
Zinc (000 Mt.)	308.0	362.0	-15%

Source: U.S. Geological Survey, Mineral Industry Surveys. Percent change based on USGS rounded numbers. 2020 data are preliminary estimates. W - withheld, N/A - not available

### Natural gas spot prices (Henry Hub)

dollars per million British thermal units



eia Source: Natural Gas Intelligence

Source: Energy Information Administration, *Natural Gas Weekly*.

### EIA Coal Stocks and Average Number of Days of Burn (Power Sector)

#### Coal stocks and average number of days of burn for non-lignite coal by region (electric power sector)

Zone	Coal	September 2020		September 2019			August 2020		
		Stocks (1000 tons)	Days of Burn	Stocks (1000 tons)	Days of Burn	% Change of Stocks	Stocks (1000 tons)	Days of Burn	% Change of Stock
Northeast	Bituminous	3,910	284	3,897	191	0.3%	3,691	278	5.9%
	Subbituminous	160	159	162	159	-1.2%	160	185	0.0%
South	Bituminous	17,908	105	21,293	104	-15.9%	19,740	114	-9.3%
	Subbituminous	6,060	83	4,676	61	29.6%	5,936	76	2.1%
Midwest	Bituminous	13,327	112	10,242	85	30.1%	13,059	115	2.1%
	Subbituminous	28,696	125	22,369	93	28.3%	27,509	125	4.3%
West	Bituminous	3,815	160	3,408	73	11.9%	3,910	163	-2.4%
	Subbituminous	23,383	92	20,078	72	16.5%	24,495	92	-4.5%
U.S. Total	Bituminous	38,960	116	38,840	100	0.3%	40,400	125	-3.6%
	Subbituminous	58,299	105	47,285	79	23.3%	58,099	104	0.3%

Source: Energy Information Administration, *Electricity Monthly Update*

### EIA Working Natural Gas Underground Storage

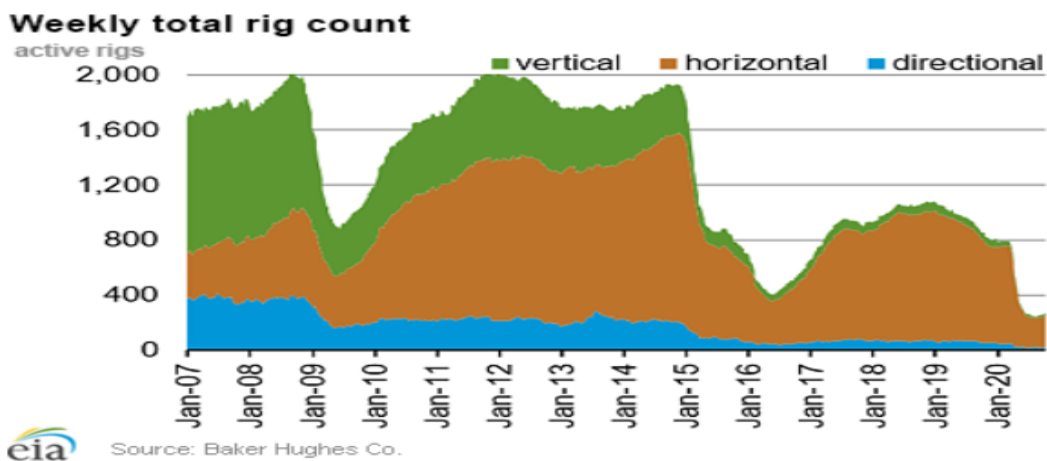
**Working gas in underground storage**

Region	Stocks billion cubic feet (Bcf)		
	2020-11-27	2020-11-20	change
East	934	934	0
Midwest	1,122	1,133	-11
Mountain	240	242	-2
Pacific	318	320	-2
South Central	1,326	1,312	14
<b>Total</b>	<b>3,939</b>	<b>3,940</b>	<b>-1</b>

Source: Form EIA-912, *Weekly Underground Natural Gas Storage Report*

Source: Energy Information Administration, *Natural Gas Weekly Update*

### EIA Natural Gas Rig Count



Source: Energy Information Administration, *Natural Gas Weekly Update*

### EIA Oil and Natural Gas Rig Productivity

Region	New-well oil production per rig barrels/day			New-well gas production per rig thousand cubic feet/day		
	November 2020	December 2020	change	November 2020	December 2020	change
Anadarko	1,003	953	(50)	6,248	5,936	(312)
Appalachia	173	175	2	26,700	26,727	27
Bakken	2,300	1,917	(383)	3,036	2,588	(448)
Eagle Ford	2,521	2,496	(25)	7,944	7,150	(794)
Haynesville	20	20	-	11,235	11,237	2
Niobrara	2,044	2,024	(20)	5,591	5,535	(56)
Permian	1,282	1,217	(65)	2,199	2,089	(110)
Rig-weighted average	1,033	1,039	6	7,545	7,258	(287)

Source: Energy Information Administration, *Drilling Productivity Report*