

---

# NATIONAL MINING ASSOCIATION

## *Weekly Statistical Summary*

---

**December 18, 2020 Edition**  
**(Data for Week Ending December 12, 2020)**

**Prepared by**  
**National Mining Association**



101 Constitution Avenue, NW, Suite 500 East  
Washington, DC, 20001  
Phone (202) 463-2600  
<http://www.nma.org>

# NMA Weekly Statistical Summary

Vol. 58, No. 50  
Dated 12/18/20

## PRODUCTION, CONSUMPTION & TRADE

	Week Ended			* Cumulative Jan 1 to		
	12/12/20	12/14/19	% Chng	12/12/20	12/12/19	% Chng
<b>EIA Coal Production (000 Tons):</b>						
Week Ended/Year to Date	11,276	12,614	-10.6%	512,308	674,836	-24.1%
52 Weeks Ended	540,249	709,129	-23.8%			
AAR Coal Rail Cars Loaded:	63,777	72,320	-11.8%	2,871,825	3,827,785	-25.0%
Coal Production Month Ended - Nov	<b>November 20/19</b> 45,960	<b>% Chng</b> 54,393	<b>% Chng</b> -15.5%	<b>Jan - Nov 20/19</b> 492,618	<b>% Chng</b> 653,126	<b>% Chng</b> -24.6%
<b>DOC Coal Trade (000 Tons)</b>						
<b>Exports:</b>	<b>October 20/19</b>			<b>Jan - Oct 20/19</b>		
			<b>% Chng</b>			<b>% Chng</b>
Metallurgical	3,416	3,835	-10.9%	34,272	46,311	-26.0%
Steam Bit. *	1,623	2,581	-37.1%	20,593	32,293	-36.2%
Lignite	7	9	-22.2%	77	78	-1.3%
Anthracite	4	7	-42.9%	162	239	-32.2%
<b>Total</b>	<b>5,050</b>	<b>6,432</b>	<b>-21.5%</b>	<b>55,104</b>	<b>78,921</b>	<b>-30.2%</b>
<b>Imports:</b>	263	742	-64.6%	4,036	5,716	-29.4%
	<b>Week Ended</b>			<b>Cumulative Week 1 to</b>		
	<b>12/12/20</b>	<b>12/14/19</b>	<b>% Chng</b>	<b>12/12/20</b>	<b>12/14/19</b>	<b>% Chng</b>
<b>EI Electric Total Output (Mil. Kwh)</b>	75,475	77,234	-2.3%	3,767,423	3,890,876	-3.2%
<b>EI Coal Region Output (Mil. Kwh)</b>	64,711	66,409	-2.6%	3,254,295	3,370,092	-3.4%
<b>AISI Raw Steel Output (000 Tons)</b>	1,567	1,815	-13.7%	75,332	92,079	-18.2%

## EIA (S&P Global) AVERAGE COAL & NATURAL GAS SPOT PRICES Dollars Per Short Ton

Average Coal Spot Prices (\$/Short Ton)	Week Ending			Natural Gas Spot Prices (\$/MMBtu)	
	12/11/20	12/04/20	% Chng	Wed.	12/9/20
Central App, 12,500 Btu, 1.2 SO <sub>2</sub>	\$54.35	\$54.35	0.0%	Henry Hub	2.45
Northern App, 13,000 Btu, < 3.0 SO <sub>2</sub>	45.15	45.15	0.0%	New York	2.35
Illinois Basin, 11,800, 5.0 SO <sub>2</sub>	34.10	34.10	0.0%	Chicago	2.27
Powder River Basin, 8,800 Btu 0.8 SO <sub>2</sub>	11.55	11.55	0.0%	Cal.Comp.Avg.	3.35
Uinta Basin, 11,700 Btu, 0.8 SO <sub>2</sub>	29.85	29.85	0.0%		

Coal exports and Imports are "as reported" (not revised); \*Steam excludes lignite & anthracite. All data in this report are preliminary and subject to revision. r/ revised.

Sources: EIA; Edison Electric Institute; American Iron & Steel Institute; Association of American Railroads; Dept. of Commerce; S&P Global; NGI's Daily Gas Price Index



**NMA**  
THE AMERICAN RESOURCE

National Mining Association Web Site: [http:// www.nma.org](http://www.nma.org)

<b>EIA Estimated Weekly U.S. Coal Production Overview</b>									
	<b>Week Ended</b>			<b>Year to Date<sup>1</sup></b>			<b>52 Weeks Ended</b>		
<b>Coal-Producing Region &amp; State</b> (thousand short tons)	<b>12/12/2020</b> (week 50)	<b>12/5/2020</b> (week 49)	<b>12/14/2019</b> (week 50)	<b>12/12/2020</b>	<b>12/12/2019</b>	<b>% Change</b>	<b>12/12/2020</b>	<b>12/14/2019</b>	<b>% Change</b>
Alabama	242	233	228	11,568	13,555	-14.7	12,073	14,204	-15.0
Alaska	21	24	19	954	929	2.7	995	980	1.5
Arizona	.	.	.	.	3,843	-100.0	.	4,100	.
Colorado	197	203	219	9,410	12,322	-23.6	9,894	12,917	-23.4
Illinois	610	605	699	29,914	44,151	-32.2	31,462	46,314	-32.1
Indiana	420	418	537	19,452	30,218	-35.6	20,642	31,817	-35.1
<b>Kentucky Total</b>	<b>476</b>	<b>493</b>	<b>584</b>	<b>22,681</b>	<b>34,654</b>	<b>-34.6</b>	<b>23,975</b>	<b>36,387</b>	<b>-34.1</b>
Eastern (KY)	157	158	211	7,700	13,344	-42.3	8,168	14,060	-41.9
Western (KY)	319	335	373	14,981	21,310	-29.7	15,807	22,327	-29.2
Louisiana	20	23	25	853	1,475	-42.2	908	1,529	-40.6
Maryland	24	24	27	1,077	1,404	-23.3	1,137	1,468	-22.5
Mississippi	52	54	45	2,719	2,584	5.2	2,819	2,704	4.3
Missouri	3	3	3	150	182	-17.3	157	193	-18.7
Montana	588	607	636	25,673	32,880	-21.9	27,082	34,798	-22.2
New Mexico	227	229	259	10,312	13,889	-25.8	10,886	14,597	-25.4
North Dakota	615	599	534	25,799	25,664	0.5	26,982	26,979	s
Ohio	87	84	125	3,651	7,468	-51.1	3,927	7,894	-50.3
Oklahoma	2	1	4	19	218	-91.1	27	234	-88.5
<b>Pennsylvania Total</b>	<b>795</b>	<b>809</b>	<b>955</b>	<b>34,472</b>	<b>47,696</b>	<b>-27.7</b>	<b>36,587</b>	<b>49,984</b>	<b>-26.8</b>
Anthracite (PA)	57	59	59	2,307	2,464	-6.4	2,437	2,562	-4.9
Bituminous (PA)	738	750	896	32,164	45,231	-28.9	34,149	47,422	-28.0
Tennessee	10	10	8	188	415	-54.7	206	426	-51.6
Texas	386	399	408	18,049	22,288	-19.0	18,954	23,300	-18.7
Utah	249	273	242	12,412	13,801	-10.1	12,948	14,416	-10.2
Virginia	202	221	216	9,325	11,930	-21.8	9,804	12,510	-21.6
<b>West Virginia Total</b>	<b>1,359</b>	<b>1,358</b>	<b>1,612</b>	<b>63,585</b>	<b>89,404</b>	<b>-28.9</b>	<b>67,156</b>	<b>93,584</b>	<b>-28.2</b>
Northern (WV)	727	716	841	33,938	44,980	-24.5	35,801	47,115	-24.0
Southern (WV)	632	641	771	29,647	44,423	-33.3	31,354	46,469	-32.5
Wyoming	4,689	4,855	5,228	210,046	263,867	-20.4	221,627	277,794	-20.2
<b>Appalachian Total</b>	<b>2,876</b>	<b>2,896</b>	<b>3,382</b>	<b>131,566</b>	<b>185,215</b>	<b>-29.0</b>	<b>139,058</b>	<b>194,129</b>	<b>-28.4</b>
<b>Interior Total</b>	<b>1,813</b>	<b>1,840</b>	<b>2,095</b>	<b>86,137</b>	<b>122,426</b>	<b>-29.6</b>	<b>90,777</b>	<b>128,418</b>	<b>-29.3</b>
<b>Western Total</b>	<b>6,587</b>	<b>6,791</b>	<b>7,137</b>	<b>294,605</b>	<b>367,195</b>	<b>-19.8</b>	<b>310,414</b>	<b>386,582</b>	<b>-19.7</b>
<b>East of Mississippi River</b>	<b>4,278</b>	<b>4,309</b>	<b>5,037</b>	<b>198,631</b>	<b>283,478</b>	<b>-29.9</b>	<b>209,788</b>	<b>297,291</b>	<b>-29.4</b>
<b>West of Mississippi River</b>	<b>6,998</b>	<b>7,217</b>	<b>7,577</b>	<b>313,676</b>	<b>391,358</b>	<b>-19.8</b>	<b>330,461</b>	<b>411,838</b>	<b>-19.8</b>
Bituminous and Lignite	11,219	11,467	12,555	510,000	672,372	-24.1	537,811	706,566	-23.9
Anthracite	57	59	59	2,307	2,464	-6.4	2,437	2,562	-4.9
<b>U.S. Total</b>	<b>11,276</b>	<b>11,526</b>	<b>12,614</b>	<b>512,308</b>	<b>674,836</b>	<b>-24.1</b>	<b>540,249</b>	<b>709,129</b>	<b>-23.8</b>
Railroad Cars Loaded	63,777	65,192	72,320	2,871,825	3,827,785	-25.0	3,034,396	4,030,160	-24.7

Source: Energy Information Administration



## Weekly Electric Output

Volume 88 No. 50

### OUTPUT FOR WEEK ENDED - Dec 12, 2020

Dec 16, 2020

The net available amount of electric energy distributed by the Total Electric Utility Industry\* for the week ended Saturday, **Dec 12, 2020** was **75,475** gigawatthours (GWh), according to the Edison Electric Institute. This is equivalent to **165** on the weekly electric output index.

### WEEKLY ELECTRIC OUTPUT BY GEOGRAPHIC DIVISION

(48 CONTIGUOUS STATES)

	Week Ended December 12		52 Weeks Ended December 12	
	GWh Output	% Increase Over Corresponding Week of 2019	GWh Output	% Increase Over Corresponding Period of 2019
New England	2,349	-1.4	114,296	-2.3
Mid-Atlantic	8,036	-4.1	408,964	-4.4
Central Industrial	12,301	-5.4	630,024	-4.6
West Central	6,151	-6.3	320,684	-2.8
Southeast	19,287	1.2	981,662	-4.5
South Central	13,261	-3.4	755,775	-1.6
Rocky Mountain	5,675	-0.3	287,178	1.3
Pacific Northwest	3,502	0.4	153,967	-2.1
Pacific Southwest	4,913	-0.8	266,866	-0.3
Total United States	75,475	-2.3	3,919,416	-3.0

### WEEKLY ELECTRIC OUTPUT IN PREVIOUS WEEKS--GWh

Week Ended	2020	Week Ended	2019	% Inc. (20/19)	52 Weeks Ended	2020	% Inc. (20/19)
Nov 21	69,338	Nov 23	71,732	-3.3	Nov 21	3,924,184	-3.1
Nov 28	68,010	Nov 30	70,815	-4.0	Nov 28	3,921,379	-3.1
Dec 05	75,942	Dec 07	76,146	-0.3	Dec 05	3,921,175	-3.0
Dec 12	75,475	Dec 14	77,234	-2.3	Dec 12	3,919,416	-3.0
<b>Dec 12</b>	<b>3,767,423</b>	<b>Dec 14</b>	<b>3,890,876</b>	<b>-3.2</b>	<b>YEAR TO DATE, FIRST 50 WEEKS</b>		

### WEEKLY ELECTRIC OUTPUT INDEX--TOTAL U.S.\* SEASONALLY ADJUSTED 1982 = 100

Week Ended	2020	Week Ended	2019	Week Ended	2018
Nov 21	177	Nov 23	185	Nov 24	178
Nov 28	170	Nov 30	178	Dec 01	185
Dec 05	172	Dec 07	173	Dec 08	185
Dec 12	165	Dec 14	168	Dec 15	179

\* Excludes Alaska and Hawaii.

+ Includes investor-owned companies, cooperatives and government-owned utilities.

Copyright © 2020 Edison Electric Institute. All rights reserved.

**EEl WEEKLY ELECTRIC OUTPUT BY GEOGRAPHIC DIVISION  
(48 CONTIGUOUS STATES)**

	Week Ended			NMA CUMULATIVE JANUARY WEEK ONE TO			52 Weeks Ended		
	12-Dec 2020 GWh Output	14-Dec 2019 GWh Output	% Increase Over Corresponding Week	12-Dec 2020 GWh Output	14-Dec 2019 GWh Output	% Increase Over Corresponding Week	12-Dec 2020 GWh Output	14-Dec 2019 GWh Output	% Increase Over Corresponding Week
<b>New England</b>	2,349	2,383	-1.4%	<b>109,523</b>	<b>112,362</b>	<b>-2.5%</b>	114,296	117,002	-2.3%
<b>Mid-Atlantic</b>	8,036	8,383	-4.1%	<b>392,026</b>	<b>411,580</b>	<b>-4.8%</b>	408,964	427,850	-4.4%
<b>Central Industrial</b>	12,301	12,998	-5.4%	<b>605,287</b>	<b>635,740</b>	<b>-4.8%</b>	630,024	660,721	-4.6%
<b>West Central</b>	6,151	6,564	-6.3%	<b>308,248</b>	<b>317,434</b>	<b>-2.9%</b>	320,684	329,842	-2.8%
<b>Southeast</b>	19,287	19,053	1.2%	<b>944,616</b>	<b>990,398</b>	<b>-4.6%</b>	981,662	1,028,368	-4.5%
<b>South Central</b>	13,261	13,721	-3.4%	<b>728,314</b>	<b>742,427</b>	<b>-1.9%</b>	756,775	768,157	-1.5%
<b>Rocky Mountain</b>	5,675	5,690	-0.3%	<b>275,804</b>	<b>272,513</b>	<b>1.2%</b>	287,178	283,446	1.3%
<b>Pacific Northwest</b>	3,502	3,489	0.4%	<b>146,795</b>	<b>150,329</b>	<b>-2.4%</b>	153,967	157,217	-2.1%
<b>Pacific Southwest</b>	4,913	4,953	-0.8%	<b>256,811</b>	<b>258,097</b>	<b>-0.5%</b>	266,866	267,637	-0.3%
<b>Total United States</b> <sup>1/</sup>	<u>75,475</u>	<u>77,234</u>	-2.3%	<u><b>3,767,424</b></u>	<u><b>3,890,880</b></u>	<b>-3.2%</b>	3,920,416	4,040,240	-3.0%
<b>Coal Regions Only</b> <sup>2/</sup>	64,711	66,409	-2.6%	<b>3,254,295</b>	<b>3,370,092</b>	<b>-3.4%</b>	3,385,287	3,498,384	-3.2%

Notes: EEI output data are an estimate of electricity load made available for distribution derived as weekly net generation + purchases from non-utilities + net imports - exports - sales for resale. It is not meant to be a measure of electricity generation for the U.S. EEI survey data represent the majority of national distribution (large utilities, large government power projects, some independent and large municipal power projects). The remaining segment of the industry (smaller producers) is estimated. Non-utility generation is captured via direct sales to utilities.

<sup>1/</sup> Excludes Alaska and Hawaii

<sup>2/</sup> Excludes New England and Pacific regions

SOURCE: Edison Electric Institute (EEI), *Weekly Electric Output Report*.

AMERICAN IRON AND STEEL INSTITUTE  
 25 Massachusetts Avenue, NW, Suite 800  
 Washington, D.C. 20001

December 14, 2020

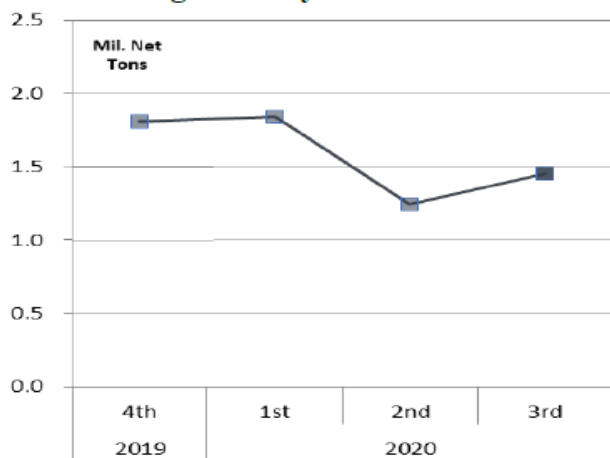
**ESTIMATED WEEKLY RAW STEEL\* PRODUCTION**

<u>Period</u>	<u>Thousand Net Tons</u>	<u>Percent Change from Previous Period</u>	<u>Percent Capability Utilization**</u>	<u>Production by District</u>		
				<u>Week Ending</u>		
				<u>Dec12</u>	<u>Dec 5</u>	
<b><u>Week Ending</u></b>				North East	144	144
				Great Lakes	558	555
December 12, 2020	1,567	-0.8	70.9	Midwest	165	169
December 12, 2019	1,815	-13.7	78.5	Southern	628	641
December 5, 2020	1,579	1.2	71.4	Western	<u>72</u>	<u>70</u>
				Total	1,567	1,579
<b><u>Year-to-Date +</u></b>						
December 12, 2020	75,332	-18.2	67.3			
December 12, 2019	92,079	-	79.8			

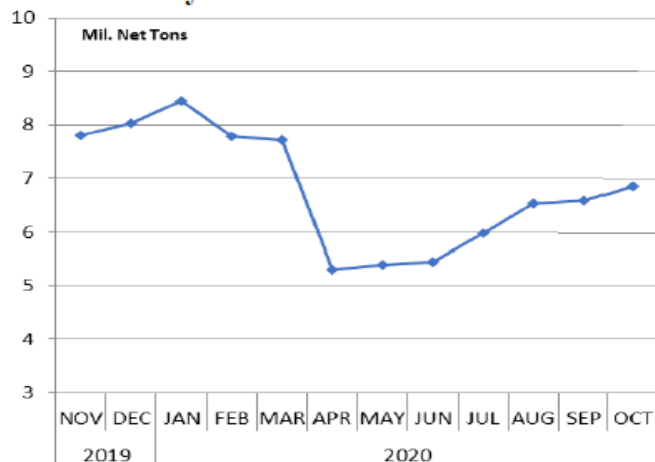
\*Raw steel production tonnage included in this report is estimated based on a sampling of steel producers (50% of domestic producers). Therefore, this report should be used primarily to assess production trends. The AISI production report "AIS 7," produced monthly and available by subscription, provides a more accurate summary of steel production based on data supplied by companies representing approximately 75% of U.S. production capacity plus includes revisions for previous months.

NOTE: Capacity for the fourth quarter 2020 is approximately 29.1 million net tons vs. 30.4 million net tons for the same period last year, and 29.4 million tons for the third quarter of 2020.

**Average Weekly Raw Steel Production**



**Monthly Raw Steel Production**



\*Steel in the first solid state after melting suitable for further processing or sale, including ingots, steel for castings and strand or pressure cast blooms, slabs or other product forms. \*\* Based on tonnage capability to produce raw steel for a sustained full order book.



Source: Kitco website - [www.kitco.com/connecting.html](http://www.kitco.com/connecting.html)

**U.S. Rail Traffic<sup>1</sup>**  
 Week 50, 2020 – Ended December 12, 2020

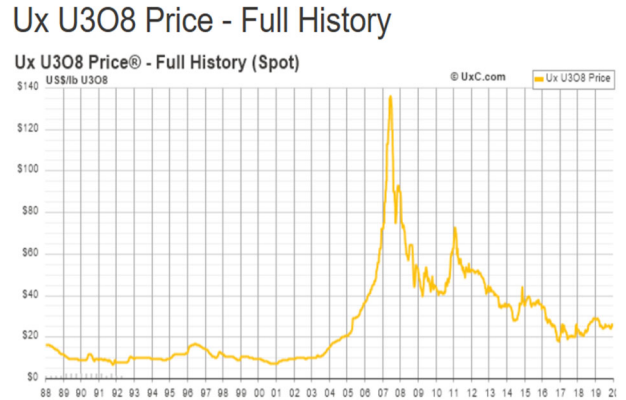
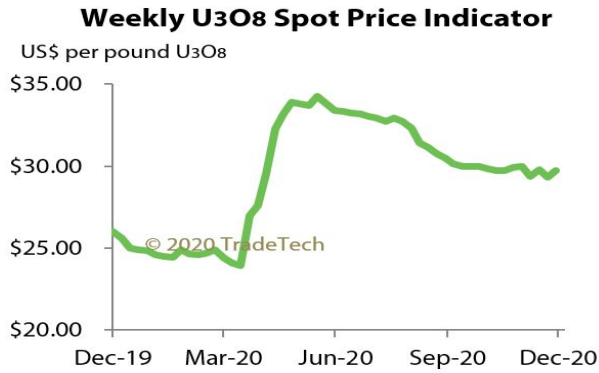
	This Week		Year-To-Date		
	Cars	vs 2019	Cumulative	Avg/wk <sup>2</sup>	vs 2019
<b>Total Carloads</b>	<b>238,193</b>	<b>-2.2%</b>	<b>10,863,948</b>	<b>217,279</b>	<b>-13.3%</b>
Chemicals	32,591	5.4%	1,542,331	30,847	-3.6%
Coal	63,777	-11.9%	2,901,910	58,038	-25.0%
Farm Products excl. Grain, and Food	15,978	3.4%	774,921	15,498	-0.4%
Forest Products	9,556	-1.3%	464,983	9,300	-5.2%
Grain	28,390	36.6%	1,118,283	22,366	3.7%
Metallic Ores and Metals	20,765	-8.2%	910,562	18,211	-16.3%
Motor Vehicles and Parts	17,602	-2.6%	642,334	12,847	-20.4%
Nonmetallic Minerals	28,070	-4.7%	1,483,368	29,667	-13.2%
Petroleum and Petroleum Products	11,485	-16.4%	547,643	10,953	-13.8%
Other	9,979	-4.3%	477,613	9,552	-0.8%
<b>Total Intermodal Units</b>	<b>308,016</b>	<b>11.1%</b>	<b>12,946,162</b>	<b>258,923</b>	<b>-2.6%</b>
<b>Total Traffic</b>	<b>546,209</b>	<b>4.9%</b>	<b>23,810,110</b>	<b>476,202</b>	<b>-7.8%</b>

<sup>1</sup> Excludes U.S. operations of Canadian Pacific, CN and GMXT.

<sup>2</sup> Average per week figures may not sum to totals as a result of independent rounding.

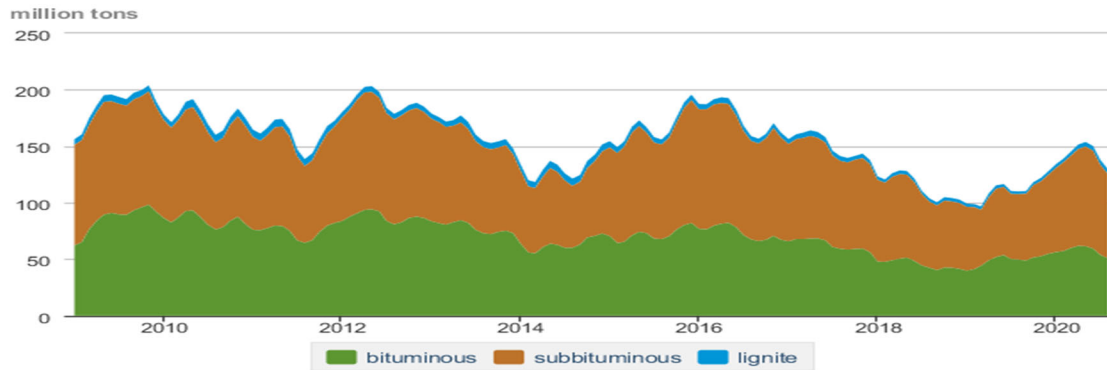
Source: AAR website - <https://www.aar.org/Pages/NEWS-and-EVENTS.aspx>

### Trade Tech's and UX's Uranium Price Indicators



Sources: Trade Tech, Uranium Info Website – [www.uranium.info](http://www.uranium.info) ; Source: Ux Consulting Co., LLC – <http://www.uxc.com>

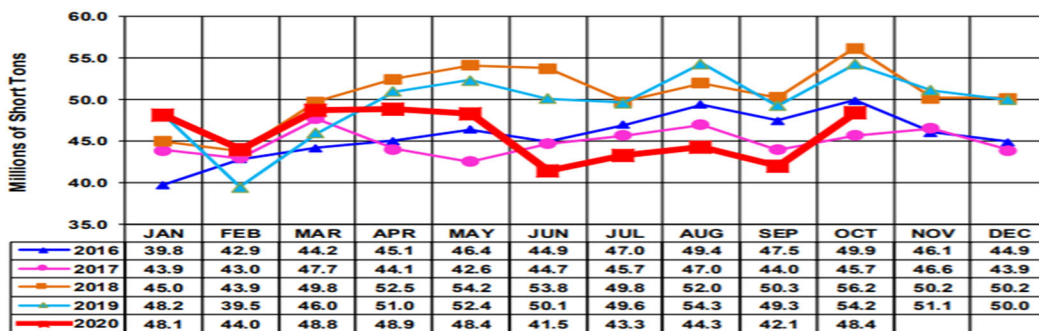
### Coal stocks by type, January 2009 - August 2020



Source: U.S. Energy Information Administration

Source: Energy Information Administration, Electric Monthly Update

### All Commodities Monthly Indicator for Internal U.S. Waterways



For the Internal U.S. Waterway Monthly Indicators, estimates for the most recent month are based on lock performance management data. The estimates will be superseded by actual data as it becomes available.

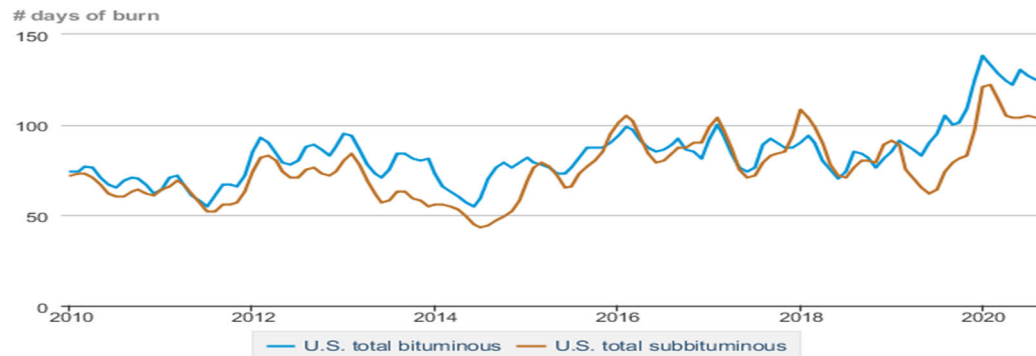
Source: Waterborne Commerce Statistics Center

### Average weekly coal commodity spot prices dollars per short ton

	Week ending					Week ago
	11/13/20	11/20/20	11/27/20	12/04/20	12/11/20	change
Central Appalachia 12,500 Btu, 1.2 SO <sub>2</sub>	\$52.75	\$52.75	\$52.75	\$54.35	\$54.35	\$0.00
Northern Appalachia 13,000 Btu, < 3.0 SO <sub>2</sub>	\$43.80	\$43.80	\$43.80	\$45.15	\$45.15	\$0.00
Illinois Basin 11,800 Btu, 5.0 SO <sub>2</sub>	\$34.10	\$34.10	\$34.10	\$34.10	\$34.10	\$0.00
Powder River Basin 8,800 Btu, 0.8 SO <sub>2</sub>	\$11.60	\$11.60	\$11.60	\$11.55	\$11.55	\$0.00
Uinta Basin 11,700 Btu, 0.8 SO <sub>2</sub>	\$29.95	\$29.95	\$29.95	\$29.85	\$29.85	\$0.00

Source: Energy Information Administration (with permission from S&P Global), *Coal Market Report*

### Days of burn by non-lignite coal rank, January 2010 - August 2020



Source: U.S. Energy Information Administration

Source: Energy Information Administration, *Electricity Monthly Update Report*

### Temperature – heating & cooling degree days (week ending Dec 03)

Region	HDD Current	HDD deviation from:		CDD Current	CDD deviation from:	
		normal	last year		normal	last year
New England	145	-54	-87	0	0	0
Middle Atlantic	147	-42	-66	0	0	0
E N Central	204	-14	-3	0	0	0
W N Central	222	-21	-3	0	0	0
South Atlantic	118	-13	-8	9	-1	1
E S Central	155	20	26	0	-1	0
W S Central	113	15	34	2	-2	-5
Mountain	215	8	3	0	0	0
Pacific	92	-15	-44	0	-1	0
United States	157	-14	-17	2	0	0

Note: HDD = heating degree day; CDD = cooling degree day

Source: National Oceanic and Atmospheric Administration

Source: Energy Information Administration, *Natural Gas Weekly Update*.

USGS Production of Selected Mineral Commodities	2020 Year to Date - 2nd Quarter	2019 Year to Date - 2nd Quarter	Percent Change
Aluminum, secondary (000 Mt.)	410.0	419.0	-2%
Cement (Mil. Mt.)	41.5	40.2	3%
Copper (000 Mt.)	590.0	615.0	-4%
Gold (Mt.)	91.9	100.0	-8%
Gypsum (Mil. Mt.)	8.5	8.7	-2%
Iron Ore (Mil. Mt.)	17.4	23.3	-25%
Lead (000 Mt.)	137.0	136.0	1%
Molybdenum (000 Mt.)	29.2	21.7	35%
Phosphate rock (Mil. Mt.)	11.9	11.3	5%
Sand & gravel, construction (Mil. Mt.)	428.0	431.0	-1%
Silver (Mt.)	490.0	482.0	2%
Soda ash (Mil. Mt.)	5.1	5.8	-12%
Stone, crushed (Mil. Mt.)	694.0	699.0	-1%
Zinc (000 Mt.)	308.0	362.0	-15%

Source: U.S. Geological Survey, Mineral Industry Surveys. Percent change based on USGS rounded numbers. 2020 data are preliminary estimates. W - withheld, N/A - not available

**Natural gas spot prices (Henry Hub)**

dollars per million British thermal units



eia Source: Natural Gas Intelligence

Source: Energy Information Administration, *Natural Gas Weekly*.

**EIA Coal Stocks and Average Number of Days of Burn (Power Sector)**

**Coal stocks and average number of days of burn for non-lignite coal by region (electric power sector)**

Zone	Coal	September 2020		September 2019		% Change of Stocks	August 2020		
		Stocks (1000 tons)	Days of Burn	Stocks (1000 tons)	Days of Burn		Stocks (1000 tons)	Days of Burn	% Chang of Stock
Northeast	Bituminous	3,910	284	3,897	191	0.3%	3,691	278	5.9%
	Subbituminous	160	159	162	159	-1.2%	160	185	0.0%
South	Bituminous	17,908	105	21,293	104	-15.9%	19,740	114	-9.3%
	Subbituminous	6,060	83	4,676	61	29.6%	5,936	76	2.1%
Midwest	Bituminous	13,327	112	10,242	85	30.1%	13,059	115	2.1%
	Subbituminous	28,696	125	22,369	93	28.3%	27,509	125	4.3%
West	Bituminous	3,815	160	3,408	73	11.9%	3,910	163	-2.4%
	Subbituminous	23,383	92	20,078	72	16.5%	24,495	92	-4.5%
U.S. Total	Bituminous	38,960	116	38,840	100	0.3%	40,400	125	-3.6%
	Subbituminous	58,299	105	47,285	79	23.3%	58,099	104	0.3%

Source: Energy Information Administration, *Electricity Monthly Update*

### EIA Working Natural Gas Underground Storage

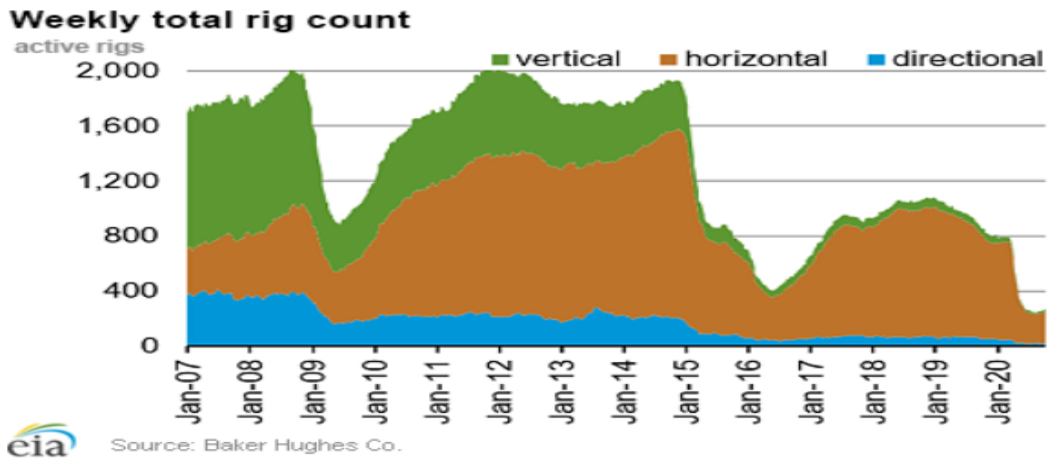
#### Working gas in underground storage

Region	Stocks billion cubic feet (Bcf)		
	2020-12-04	2020-11-27	change
East	915	934	-19
Midwest	1,095	1,122	-27
Mountain	232	240	-8
Pacific	312	318	-6
South Central	1,294	1,326	-32
<b>Total</b>	<b>3,848</b>	<b>3,939</b>	<b>-91</b>

Source: Form EIA-912, Weekly Underground Natural Gas Storage Report

Source: Energy Information Administration, Natural Gas Weekly Update

### EIA Natural Gas Rig Count



Source: Energy Information Administration, Natural Gas Weekly Update

### EIA Oil and Natural Gas Rig Productivity

Region	New-well oil production per rig barrels/day			New-well gas production per rig thousand cubic feet/day		
	December 2020	January 2021	change	December 2020	January 2021	change
Anadarko	952	905	(47)	5,935	5,639	(296)
Appalachia	175	177	2	26,727	26,754	27
Bakken	2,083	2,042	(41)	2,763	2,724	(39)
Eagle Ford	2,334	2,171	(163)	7,381	6,864	(517)
Haynesville	20	20	-	11,216	11,218	2
Niobrara	2,030	2,010	(20)	5,536	5,481	(55)
Permian	1,217	1,156	(61)	2,085	1,981	(104)
Rig-weighted average	1,036	1,025	(11)	7,278	6,710	(568)

Source: Energy Information Administration, Drilling Productivity Report