
NATIONAL MINING ASSOCIATION

Weekly Statistical Summary

December 25, 2020 Edition
(Data for Week Ending December 19, 2020)

Prepared by
National Mining Association



101 Constitution Avenue, NW, Suite 500 East
Washington, DC, 20001
Phone (202) 463-2600
<http://www.nma.org>

NMA Weekly Statistical Summary

Vol. 58, No. 51
Dated 12/25/20

PRODUCTION, CONSUMPTION & TRADE

	Week Ended			* Cumulative Jan 1 to		
	12/19/20	12/21/19	% Chng	12/19/20	12/19/19	% Chng
EIA Coal Production (000 Tons):						
Week Ended/Year to Date	10,981	12,564	-12.6%	523,289	687,414	-23.9%
52 Weeks Ended	538,666	705,616	-23.7%			
AAR Coal Rail Cars Loaded:	62,110	72,032	-13.8%	2,933,935	3,899,894	-24.8%
DOC Coal Trade (000 Tons)						
Exports:						
	October 20/19		% Chng	Jan - Oct 20/19		% Chng
Metallurgical	3,416	3,835	-10.9%	34,272	46,311	-26.0%
Steam Bit. *	1,623	2,581	-37.1%	20,593	32,293	-36.2%
Lignite	7	9	-22.2%	77	78	-1.3%
Anthracite	4	7	-42.9%	162	239	-32.2%
Total	5,050	6,432	-21.5%	55,104	78,921	-30.2%
Imports:						
	263	742	-64.6%	4,036	5,716	-29.4%
EI Electric Total Output (Mil. Kwh)						
	Week Ended		% Chng	Cumulative Week 1 to		% Chng
	12/19/20	12/21/19		12/19/20	12/21/19	
EI Electric Total Output (Mil. Kwh)	80,039	81,044	-1.2%	3,847,462	3,971,920	-3.1%
EI Coal Region Output (Mil. Kwh)	69,159	69,728	-0.8%	3,323,454	3,439,820	-3.4%
AISI Raw Steel Output (000 Tons)	1,619	1,815	-10.8%	76,951	93,894	-18.0%

EIA (S&P Global) AVERAGE COAL & NATURAL GAS SPOT PRICES Dollars Per Short Ton

Average Coal Spot Prices (\$/Short Ton)	Week Ending			Natural Gas Spot Prices (\$/MMBtu)	
	12/18/20	12/11/20	% Chng	Wed.	12/16/20
Central App, 12,500 Btu, 1.2 SO ₂	\$54.35	\$54.35	0.0%	Henry Hub	2.67
Northern App, 13,000 Btu, < 3.0 SO ₂	45.15	45.15	0.0%	New York	5.53
Illinois Basin, 11,800, 5.0 SO ₂	34.10	34.10	0.0%	Chicago	2.55
Powder River Basin, 8,800 Btu 0.8 SO ₂	11.55	11.55	0.0%	Cal.Comp.Avg.	3.72
Uinta Basin, 11,700 Btu, 0.8 SO ₂	29.85	29.85	0.0%		

Coal exports and Imports are "as reported" (not revised); *Steam excludes lignite & anthracite. All data in this report are preliminary and subject to revision. r/ revised.
Sources: EIA; Edison Electric Institute; American Iron & Steel Institute; Association of American Railroads; Dept. of Commerce; S&P Global; NGI's Daily Gas Price Index



NMA
THE AMERICAN RESOURCE

National Mining Association Web Site: [http:// www.nma.org](http://www.nma.org)

Weekly U.S. Coal Production Overview									
Coal-Producing Region & State (thousand short tons)	Week Ended			Year to Date			52 Weeks Ended		
	12/19/2020 (week 51)	12/12/2020 (week 50)	12/21/2019 (week 51)	12/19/2020	12/19/2019	% Change	12/19/2020	12/21/2019	% Change
Alabama	226	242	227	11,794	13,783	-14.4	12,072	14,125	-14.5
Alaska	21	21	18	975	947	2.9	997	974	2.4
Arizona	3,843	-100.0	.	3,965	.
Colorado	193	197	218	9,603	12,540	-23.4	9,870	12,856	-23.2
Illinois	588	610	696	30,502	44,848	-32.0	31,354	45,982	-31.8
Indiana	406	420	535	19,858	30,754	-35.4	20,513	31,595	-35.1
Kentucky Total	467	476	582	23,149	35,237	-34.3	23,860	36,149	-34.0
Eastern (KY)	154	157	210	7,854	13,555	-42.1	8,111	13,927	-41.8
Western (KY)	313	319	371	15,294	21,682	-29.5	15,749	22,221	-29.1
Louisiana	21	20	25	873	1,500	-41.8	904	1,529	-40.9
Maryland	23	24	27	1,100	1,431	-23.1	1,133	1,465	-22.7
Mississippi	51	52	45	2,770	2,629	5.4	2,825	2,693	4.9
Missouri	3	3	3	153	185	-17.0	157	190	-17.4
Montana	581	588	634	26,254	33,515	-21.7	27,029	34,522	-21.7
New Mexico	218	227	258	10,530	14,148	-25.6	10,846	14,523	-25.3
North Dakota	573	615	532	26,372	26,197	0.7	27,023	26,902	0.4
Ohio	84	87	124	3,735	7,592	-50.8	3,887	7,814	-50.3
Oklahoma	2	2	4	21	222	-90.4	26	230	-88.7
Pennsylvania Total	762	795	951	35,234	48,648	-27.6	36,398	49,879	-27.0
Anthracite (PA)	55	57	59	2,362	2,523	-6.4	2,434	2,578	-5.6
Bituminous (PA)	707	738	893	32,872	46,125	-28.7	33,964	47,301	-28.2
Tennessee	10	10	8	197	423	-53.4	208	430	-51.6
Texas	380	386	407	18,429	22,695	-18.8	18,927	23,237	-18.5
Utah	245	249	241	12,657	14,043	-9.9	12,952	14,371	-9.9
Virginia	201	202	215	9,527	12,145	-21.6	9,790	12,454	-21.4
West Virginia Total	1,313	1,359	1,606	64,898	91,011	-28.7	66,863	93,241	-28.3
Northern (WV)	697	727	838	34,636	45,819	-24.4	35,661	46,960	-24.1
Southern (WV)	616	632	768	30,263	45,192	-33.0	31,202	46,281	-32.6
Wyoming	4,612	4,689	5,208	214,658	269,080	-20.2	221,031	276,488	-20.1
Appalachian Total	2,773	2,876	3,369	134,339	188,588	-28.8	138,462	193,334	-28.4
Interior Total	1,765	1,813	2,086	87,901	124,515	-29.4	90,455	127,679	-29.2
Western Total	6,443	6,587	7,109	301,048	374,312	-19.6	309,749	384,603	-19.5
East of Mississippi River	4,132	4,278	5,017	202,764	288,501	-29.7	208,904	295,826	-29.4
West of Mississippi River	6,849	6,998	7,547	320,525	398,913	-19.7	329,762	409,790	-19.5
Bituminous and Lignite	10,927	11,219	12,505	520,927	684,891	-23.9	536,233	703,038	-23.7
Anthracite	55	57	59	2,362	2,523	-6.4	2,434	2,578	-5.6
U.S. Total	10,981	11,276	12,564	523,289	687,414	-23.9	538,666	705,616	-23.7
Railroad Cars Loaded	62,110	63,777	72,032	2,933,935	3,899,894	-24.8	3,024,474	4,008,228	-24.5

Source: Energy Information Administration



Weekly Electric Output

Volume 88 No. 51

OUTPUT FOR WEEK ENDED - Dec 19, 2020

Dec 23, 2020

The net available amount of electric energy distributed by the Total Electric Utility Industry* for the week ended Saturday, **Dec 19, 2020** was **80,039** gigawatthours (GWh), according to the Edison Electric Institute. This is equivalent to **176** on the weekly electric output index.

WEEKLY ELECTRIC OUTPUT BY GEOGRAPHIC DIVISION

(48 CONTIGUOUS STATES)

	Week Ended December 19		52 Weeks Ended December 19	
	GWh Output	% Increase Over Corresponding Week of 2019	GWh Output	% Increase Over Corresponding Period of 2019
New England	2,478	-2.1	114,242	-2.5
Mid-Atlantic	8,559	-5.0	408,510	-4.7
Central Industrial	13,072	-3.4	629,560	-4.8
West Central	6,497	-2.3	320,528	-2.9
Southeast	20,382	1.8	982,027	-4.6
South Central	14,919	1.1	755,930	-1.8
Rocky Mountain	5,730	-0.3	287,163	1.2
Pacific Northwest	3,487	-3.6	153,835	-2.3
Pacific Southwest	4,915	-4.9	266,615	-0.5
Total United States	80,039	-1.2	3,918,411	-3.1

WEEKLY ELECTRIC OUTPUT IN PREVIOUS WEEKS--GWh

Week Ended	2020	Week Ended	2019	% Inc. (20/19)	52 Weeks Ended	2020	% Inc. (20/19)
Nov 28	68,010	Nov 30	70,815	-4.0	Nov 28	3,921,379	-3.1
Dec 05	75,942	Dec 07	76,146	-0.3	Dec 05	3,921,175	-3.0
Dec 12	75,475	Dec 14	77,234	-2.3	Dec 12	3,919,416	-3.0
Dec 19	80,039	Dec 21	81,044	-1.2	Dec 19	3,918,411	-3.1
Dec 19	3,847,462	Dec 21	3,971,920	-3.1	YEAR TO DATE, FIRST 51 WEEKS		

WEEKLY ELECTRIC OUTPUT INDEX--TOTAL U.S.*

SEASONALLY ADJUSTED 1982 = 100

Week Ended	2020	Week Ended	2019	Week Ended	2018
Nov 28	170	Nov 30	178	Dec 01	185
Dec 05	172	Dec 07	173	Dec 08	185
Dec 12	165	Dec 14	168	Dec 15	179
Dec 19	176	Dec 21	179	Dec 22	172

* Excludes Alaska and Hawaii.

+ Includes investor-owned companies, cooperatives and government-owned utilities.

Copyright © 2020 Edison Electric Institute. All rights reserved.

**EEl WEEKLY ELECTRIC OUTPUT BY GEOGRAPHIC DIVISION
(48 CONTIGUOUS STATES)**

	Week Ended			NMA CUMULATIVE JANUARY WEEK ONE TO			52 Weeks Ended		
	19-Dec 2020 GWh Output	21-Dec 2019 GWh Output	% Increase Over Corresponding Week	19-Dec 2020 GWh Output	21-Dec 2019 GWh Output	% Increase Over Corresponding Week	19-Dec 2020 GWh Output	21-Dec 2019 GWh Output	% Increase Over Corresponding Week
New England	2,478	2,532	-2.1%	112,001	114,894	-2.5%	114,242	117,160	-2.5%
Mid-Atlantic	8,559	9,013	-5.0%	400,585	420,593	-4.8%	408,510	428,489	-4.7%
Central Industrial	13,072	13,537	-3.4%	618,359	649,277	-4.8%	629,560	661,279	-4.8%
West Central	6,497	6,652	-2.3%	314,745	324,086	-2.9%	320,528	330,138	-2.9%
Southeast	20,382	20,017	1.8%	964,998	1,010,415	-4.5%	982,027	1,029,172	-4.6%
South Central	14,919	14,764	1.0%	743,233	757,191	-1.8%	755,930	769,680	-1.8%
Rocky Mountain	5,730	5,745	-0.3%	281,534	278,258	1.2%	287,163	283,799	1.2%
Pacific Northwest	3,487	3,619	-3.6%	150,282	153,948	-2.4%	153,835	157,409	-2.3%
Pacific Southwest	4,915	5,165	-4.8%	261,726	263,262	-0.6%	266,615	267,912	-0.5%
Total United States ^{1/}	80,039	81,044	-1.2%	3,847,463	3,971,924	-3.1%	3,918,410	4,045,038	-3.1%
Coal Regions Only ^{2/}	69,159	69,728	-0.8%	3,323,454	3,439,820	-3.4%	3,383,718	3,502,557	-3.4%

Notes: EEI output data are an estimate of electricity load made available for distribution derived as weekly net generation + purchases from non-utilities + net imports - exports - sales for resale. It is not meant to be a measure of electricity generation for the U.S. EEI survey data represent the majority of national distribution (large utilities, large government power projects, some independent and large municipal power projects). The remaining segment of the industry (smaller producers) is estimated. Non-utility generation is captured via direct sales to utilities.

^{1/} Excludes Alaska and Hawaii

^{2/} Excludes New England and Pacific regions

SOURCE: Edison Electric Institute (EEI), *Weekly Electric Output Report*.

AMERICAN IRON AND STEEL INSTITUTE
 25 Massachusetts Avenue, NW, Suite 800
 Washington, D.C. 20001

December 21, 2020

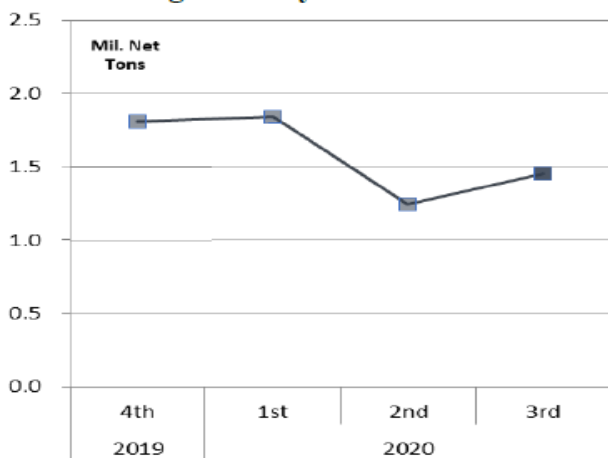
ESTIMATED WEEKLY RAW STEEL* PRODUCTION

<u>Period</u>	<u>Thousand Net Tons</u>	<u>Percent Change from Previous Period</u>	<u>Percent Capability Utilization**</u>	<u>Production by District</u>		
				<u>Week Ending Dec 19</u>	<u>Week Ending Dec 12</u>	
<u>Week Ending</u>				North East	141	144
				Great Lakes	581	558
December 19, 2020	1,619	3.3	73.2	Midwest	172	165
December 19, 2019	1,815	-10.8	78.5	Southern	650	628
December 12, 2020	1,567	-0.8	70.9	Western	<u>75</u>	<u>72</u>
				Total	1,619	1,567
<u>Year-to-Date +</u>						
December 19, 2020	76,951	-18.0	67.4			
December 19, 2019	93,894	-	79.8			

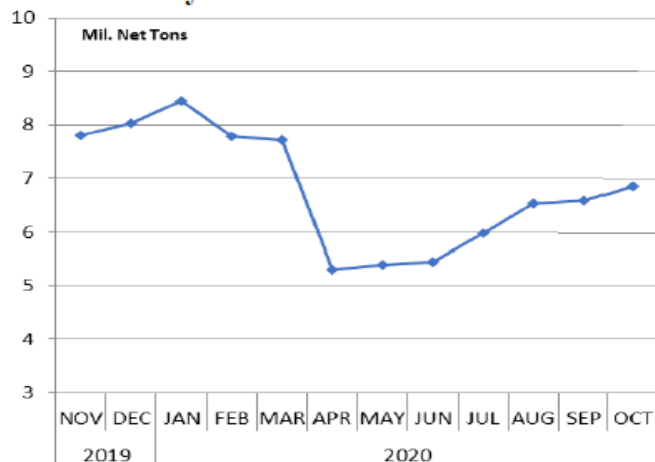
*Raw steel production tonnage included in this report is estimated based on a sampling of steel producers (50% of domestic producers). Therefore, this report should be used primarily to assess production trends. The AISI production report "AIS 7," produced monthly and available by subscription, provides a more accurate summary of steel production based on data supplied by companies representing approximately 75% of U.S. production capacity plus includes revisions for previous months.

NOTE: Capacity for the fourth quarter 2020 is approximately 29.1 million net tons vs. 30.4 million net tons for the same period last year, and 29.4 million tons for the third quarter of 2020.

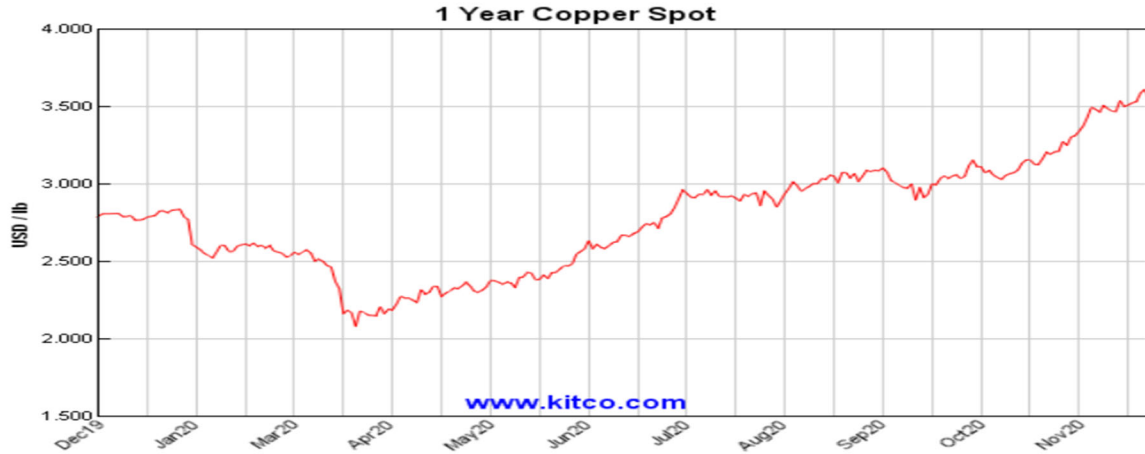
Average Weekly Raw Steel Production



Monthly Raw Steel Production



*Steel in the first solid state after melting suitable for further processing or sale, including ingots, steel for castings and strand or pressure cast blooms, slabs or other product forms. ** Based on tonnage capability to produce raw steel for a sustained full order book.



Source: Kitco website - www.kitco.com/connecting.html

U.S. Rail Traffic¹
 Week 51, 2020 – Ended December 19, 2020

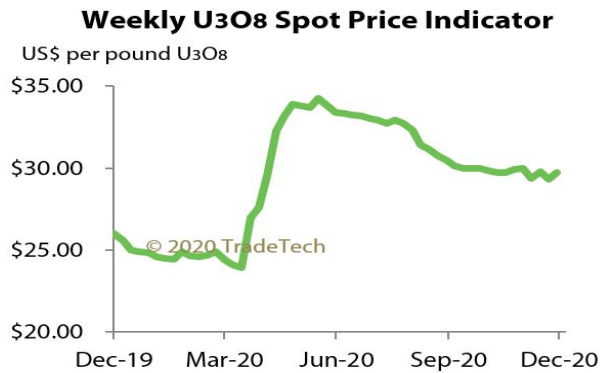
	This Week		Year-To-Date		
	Cars	vs 2019	Cumulative	Avg/wk ²	vs 2019
Total Carloads	230,838	-5.8%	11,094,786	217,545	-13.2%
Chemicals	33,276	2.7%	1,575,607	30,894	-3.5%
Coal	62,110	-13.8%	2,964,020	58,118	-24.8%
Farm Products excl. Grain, and Food	15,371	-1.5%	790,292	15,496	-0.4%
Forest Products	9,732	-2.5%	474,715	9,308	-5.2%
Grain	25,860	19.8%	1,144,143	22,434	4.0%
Metallic Ores and Metals	21,480	-4.4%	932,042	18,275	-16.1%
Motor Vehicles and Parts	15,773	-6.0%	658,107	12,904	-20.1%
Nonmetallic Minerals	25,840	-14.3%	1,509,208	29,592	-13.2%
Petroleum and Petroleum Products	11,701	-17.1%	559,344	10,968	-13.9%
Other	9,695	-1.6%	487,308	9,555	-0.8%
Total Intermodal Units	289,467	10.3%	13,235,629	259,522	-2.3%
Total Traffic	520,305	2.5%	24,330,415	477,067	-7.6%

¹ Excludes U.S. operations of Canadian Pacific, CN and GMXT.

² Average per week figures may not sum to totals as a result of independent rounding.

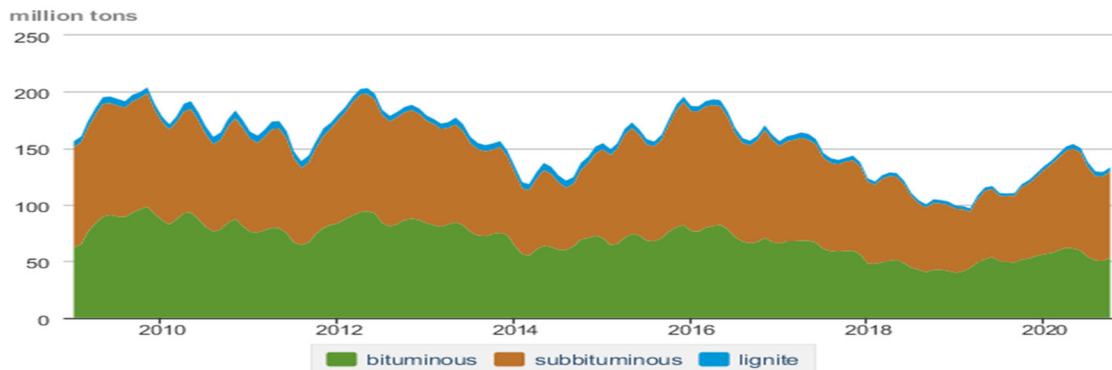
Source: AAR website - <https://www.aar.org/Pages/NEWS-and-EVENTS.aspx>

Trade Tech's and UX's Uranium Price Indicators



Sources: Trade Tech, Uranium Info Website – www.uranium.info ; Source: Ux Consulting Co., LLC – <http://www.uxc.com>

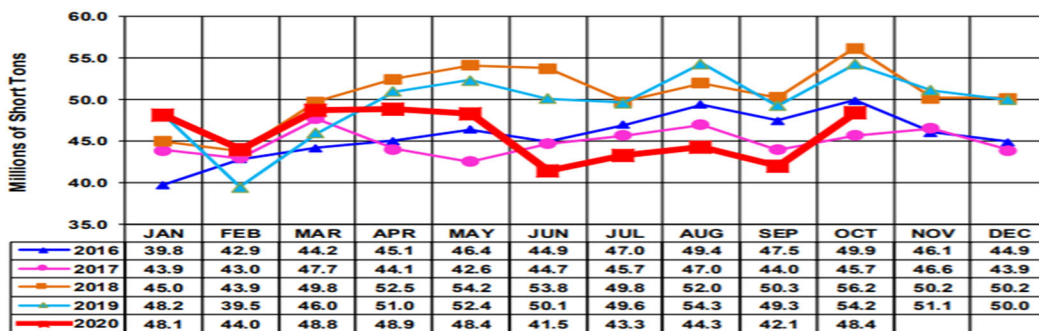
Coal stocks by type, January 2009 - October 2020



Source: U.S. Energy Information Administration

Source: Energy Information Administration, Electric Monthly Update

All Commodities Monthly Indicator for Internal U.S. Waterways



For the Internal U.S. Waterway Monthly Indicators, estimates for the most recent month are based on lock performance management data. The estimates will be superseded by actual data as it becomes available.

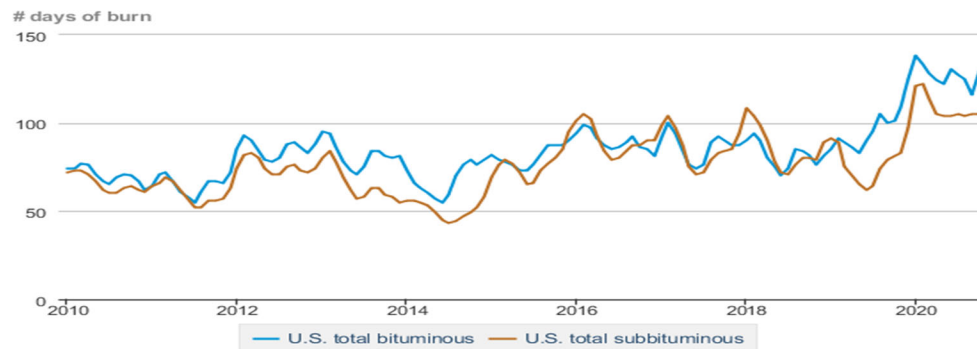
Source: Waterborne Commerce Statistics Center

Average weekly coal commodity spot prices dollars per short ton

	Week ending					Week ago
	11/20/20	11/27/20	12/04/20	12/11/20	12/18/20	change
Central Appalachia 12,500 Btu, 1.2 SO ₂	\$52.75	\$52.75	\$54.35	\$54.35	\$54.35	\$0.00
Northern Appalachia 13,000 Btu, < 3.0 SO ₂	\$43.80	\$43.80	\$45.15	\$45.15	\$45.15	\$0.00
Illinois Basin 11,800 Btu, 5.0 SO ₂	\$34.10	\$34.10	\$34.10	\$34.10	\$34.10	\$0.00
Powder River Basin 8,800 Btu, 0.8 SO ₂	\$11.60	\$11.60	\$11.55	\$11.55	\$11.55	\$0.00
Uinta Basin 11,700 Btu, 0.8 SO ₂	\$29.95	\$29.95	\$29.85	\$29.85	\$29.85	\$0.00

Source: Energy Information Administration (with permission from S&P Global), *Coal Market Report*

Days of burn by non-lignite coal rank, January 2010 - October 2020



Source: U.S. Energy Information Administration

Source: Energy Information Administration, *Electricity Monthly Update Report*

Temperature – heating & cooling degree days (week ending Dec 10)

Region	HDD Current	HDD deviation from:		CDD Current	CDD deviation from:	
		normal	last year		normal	last year
New England	212	-4	-8	0	0	0
Middle Atlantic	202	-3	0	0	0	0
E N Central	208	-28	-15	0	0	0
W N Central	191	-71	-60	0	0	0
South Atlantic	153	9	26	4	-5	-6
E S Central	154	6	32	0	-1	0
W S Central	99	-10	22	0	-3	-5
Mountain	186	-31	4	0	0	0
Pacific	86	-28	-10	0	-1	0
United States	164	-20	-4	1	-1	-2

Note: HDD = heating degree day; CDD = cooling degree day

Source: National Oceanic and Atmospheric Administration

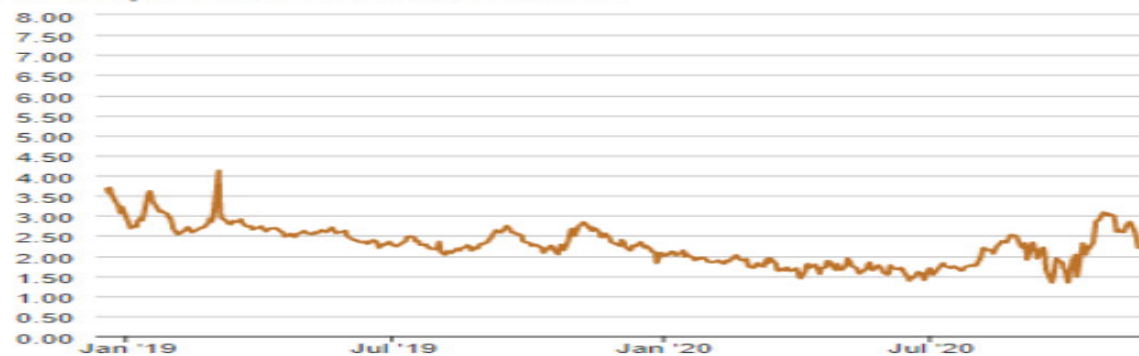
Source: Energy Information Administration, *Natural Gas Weekly Update*.

USGS Production of Selected Mineral Commodities	2020 Year to Date - 2nd Quarter	2019 Year to Date - 2nd Quarter	Percent Change
Aluminum, secondary (000 Mt.)	410.0	419.0	-2%
Cement (Mil. Mt.)	41.5	40.2	3%
Copper (000 Mt.)	590.0	615.0	-4%
Gold (Mt.)	91.9	100.0	-8%
Gypsum (Mil. Mt.)	8.5	8.7	-2%
Iron Ore (Mil. Mt.)	17.4	23.3	-25%
Lead (000 Mt.)	137.0	136.0	1%
Molybdenum (000 Mt.)	29.2	21.7	35%
Phosphate rock (Mil. Mt.)	11.9	11.3	5%
Sand & gravel, construction (Mil. Mt.)	428.0	431.0	-1%
Silver (Mt.)	490.0	482.0	2%
Soda ash (Mil. Mt.)	5.1	5.8	-12%
Stone, crushed (Mil. Mt.)	694.0	699.0	-1%
Zinc (000 Mt.)	308.0	362.0	-15%

Source: U.S. Geological Survey, Mineral Industry Surveys. Percent change based on USGS rounded numbers. 2020 data are preliminary estimates. W - withheld, N/A - not available

Natural gas spot prices (Henry Hub)

dollars per million British thermal units



eia Source: Natural Gas Intelligence

Source: Energy Information Administration, *Natural Gas Weekly*.

EIA Coal Stocks and Average Number of Days of Burn (Power Sector)

Coal stocks and average number of days of burn for non-lignite coal by region (electric power sector)

Zone	Coal	October 2020		October 2019		% Change of Stocks	September 2020		
		Stocks (1000 tons)	Days of Burn	Stocks (1000 tons)	Days of Burn		Stocks (1000 tons)	Days of Burn	% Change of Stocks
Northeast	Bituminous	4,274	314	3,996	193	7.0%	3,910	284	9.3
	Subbituminous	160	142	162	158	-1.2%	160	159	0.0
South	Bituminous	20,332	119	23,217	109	-12.4%	17,908	105	13.5
	Subbituminous	6,062	85	5,236	64	15.8%	6,060	83	0.0
Midwest	Bituminous	13,745	114	11,182	85	22.9%	13,327	112	3.1
	Subbituminous	28,477	123	25,172	98	13.1%	28,696	125	-0.8
West	Bituminous	3,894	182	3,223	66	20.8%	3,815	160	2.1
	Subbituminous	23,270	93	21,285	71	9.3%	23,383	92	-0.5
U.S. Total	Bituminous	42,244	129	41,617	101	1.5%	38,960	116	8.4
	Subbituminous	57,968	105	51,854	81	11.8%	58,299	105	-0.6

Source: Energy Information Administration, *Electricity Monthly Update*

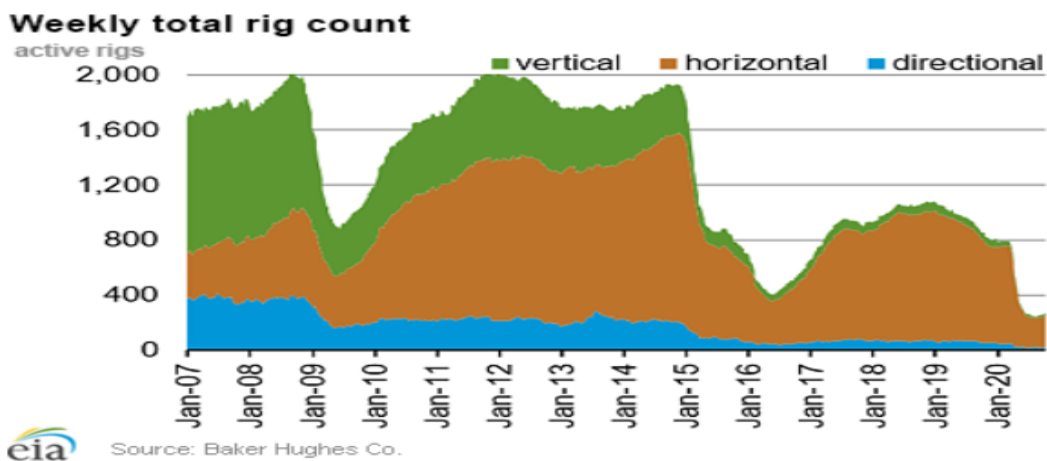
EIA Working Natural Gas Underground Storage

Region	Stocks billion cubic feet (Bcf)		
	2020-12-11	2020-12-04	change
East	881	915	-34
Midwest	1,059	1,095	-36
Mountain	223	232	-9
Pacific	306	312	-6
South Central	1,256	1,294	-38
Total	3,726	3,848	-122

Source: Form EIA-912, *Weekly Underground Natural Gas Storage Report*

Source: Energy Information Administration, *Natural Gas Weekly Update*

EIA Natural Gas Rig Count



Source: Energy Information Administration, *Natural Gas Weekly Update*

EIA Oil and Natural Gas Rig Productivity

Region	New-well oil production per rig barrels/day			New-well gas production per rig thousand cubic feet/day		
	December 2020	January 2021	change	December 2020	January 2021	change
Anadarko	952	905	(47)	5,935	5,639	(296)
Appalachia	175	177	2	26,727	26,754	27
Bakken	2,083	2,042	(41)	2,763	2,724	(39)
Eagle Ford	2,334	2,171	(163)	7,381	6,864	(517)
Haynesville	20	20	-	11,216	11,218	2
Niobrara	2,030	2,010	(20)	5,536	5,481	(55)
Permian	1,217	1,156	(61)	2,085	1,981	(104)
Rig-weighted average	1,036	1,025	(11)	7,278	6,710	(568)

Source: Energy Information Administration, *Drilling Productivity Report*