
NATIONAL MINING ASSOCIATION

Weekly Statistical Summary

January 28, 2022 Edition
(Data for Week Ending January 22, 2022)

Prepared by
National Mining Association



101 Constitution Avenue, NW, Suite 500 East
Washington, DC, 20001
Phone (202) 463-2600
<http://www.nma.org>

NMA Weekly Statistical Summary

Vol. 60, No.4
Dated 01/28/22

PRODUCTION, CONSUMPTION & TRADE

	Week Ended			* Cumulative Jan 1 to		
	01/22/22	01/23/21	% Chng	01/22/22	01/22/21	% Chng
EIA Coal Production (000 Tons):						
Week Ended/Year to Date	11,605	11,653	-0.4%	34,738	34,445	0.9%
52 Weeks Ended	577,194	526,604	9.6%			
AAR Coal Rail Cars Loaded:	66,313	63,474	4.5%	196,341	188,002	4.4%
DOC Coal Trade (000 Tons)						
Exports:						
	Nov 21/20			Jan - Nov 21/20		
			% Chng			% Chng
Metallurgical	3,577	3,735	-4.2%	41,381	38,006	8.9%
Steam Bit. *	3,410	3,208	6.3%	36,125	23,801	51.8%
Lignite	6	6	0.0%	71	83	-14.5%
Anthracite	6	74	-91.9%	281	236	19.1%
Total	6,999	7,023	-0.3%	77,858	62,126	25.3%
Imports:	436	639	-31.8%	4,701	4,676	0.5%
EI Electric Total Output (Mil. Kwh)						
	Week Ended			Cumulative Week 1 to		
	01/22/22	01/23/21	% Chng	01/22/22	01/23/21	% Chng
EI Coal Region Output (Mil. Kwh)	85,137	77,172	10.3%	320,767	309,192	3.7%
EI Coal Region Output (Mil. Kwh)	74,351	66,701	11.5%	276,142	267,460	3.2%
AISI Raw Steel Output (000 Tons)	1,803	1,736	3.9%	5,704	5,456	4.5%

EIA (S&P Global) AVERAGE COAL & NATURAL GAS SPOT PRICES Dollars Per Short Ton

Average Coal Spot Prices (\$/Short Ton)	Week Ending			Natural Gas Spot Prices (\$/MMBtu)	
	01/21/22	01/14/22	% Chng	Wed.	01/19/22
Central App, 12,500 Btu, 1.2 SO ₂	\$89.70	\$86.55	3.6%	Henry Hub	4.74
Northern App, 13,000 Btu, < 3.0 SO ₂	73.35	70.80	3.6%	New York	15.96
Illinois Basin, 11,800, 5.0 SO ₂	87.90	86.55	1.6%	Chicago	4.65
Powder River Basin, 8,800 Btu 0.8 SO ₂	29.05	28.05	3.6%	Cal.Comp.Avg.	4.95
Uinta Basin, 11,700 Btu, 0.8 SO ₂	32.10	31.00	3.5%		

Coal exports and Imports are "as reported" (not revised); *Steam excludes lignite & anthracite. All data in this report are preliminary and subject to revision. r/ revised.

Sources: EIA; Edison Electric Institute; American Iron & Steel Institute; Association of American Railroads; Dept. of Commerce; S&P Global; NGI's Daily Gas Price Index



NMA

THE AMERICAN RESOURCE

National Mining Association Web Site: [http:// www.nma.org](http://www.nma.org)

EIA Estimated Weekly U.S. Coal Production Overview

Coal-Producing Region & State (thousand short tons)	Week Ended			Year to Date			52 Weeks Ended		
	1/22/2022 (week 3)	1/15/2022 (week 2)	1/23/2021 (week 3)	1/22/2022	1/22/2021	% Change	1/22/2022	1/23/2021	% Change
Alabama	195	192	258	556	764	-27.2	9,815	11,977	-18.1
Alaska	21	23	26	67	76	-12.2	1,064	1,013	5
Colorado	215	220	201	639	595	7.4	11,145	9,860	13
Illinois	939	926	930	2,728	2,749	-0.8	39,510	31,963	23.6
Indiana	356	369	405	1,073	1,198	-10.4	18,890	19,402	-2.6
Kentucky total	549	559	547	1,633	1,617	1	26,596	23,739	12
Eastern (KY)	217	214	192	632	567	11.5	9,955	8,180	21.7
Western (KY)	332	345	355	1,001	1,050	-4.6	16,641	15,560	6.9
Louisiana	4	4	5	13	14	-9.1	288	564	-48.9
Maryland	25	27	29	78	84	-7.3	1,274	1,130	12.7
Mississippi	63	61	67	183	199	-8	3,125	2,627	19
Missouri	1	2	2	4	4	-0.6	65	150	-56.7
Montana	552	566	545	1,644	1,612	2	28,049	25,767	8.9
New Mexico	155	156	195	453	577	-21.5	8,379	9,907	-15.4
North Dakota	538	541	581	1,572	1,718	-8.5	27,071	26,074	3.8
Ohio	43	49	63	138	185	-25.5	2,645	3,405	-22.3
Oklahoma	s	1	-100
Pennsylvania total	1,016	1,038	977	3,041	2,889	5.3	44,349	35,994	23.2
Anthracite (PA)	35	36	41	103	121	-14.8	1,948	2,300	-15.3
Bituminous (PA)	982	1,002	936	2,937	2,767	6.1	42,401	33,694	25.8
Tennessee	64	.
Texas	279	292	309	837	915	-8.5	16,586	19,130	-13.3
Utah	230	240	260	695	768	-9.5	12,434	12,908	-3.7
Virginia	227	235	223	681	658	3.5	11,023	9,577	15.1
West Virginia total	1,686	1,725	1,651	5,045	4,879	3.4	78,843	67,004	17.7
Northern (WV)	995	1,025	952	2,987	2,813	6.2	45,521	37,426	21.6
Southern (WV)	691	700	699	2,058	2,066	-0.4	33,322	29,578	12.7
Wyoming	4,508	4,691	4,379	13,658	12,945	5.5	236,045	214,348	10.1
Appalachian total	3,410	3,480	3,392	10,171	10,025	1.5	157,903	137,330	15
Interior total	1,974	1,999	2,074	5,840	6,129	-4.7	95,105	89,396	6.4
Western total	6,220	6,437	6,188	18,727	18,291	2.4	324,186	299,877	8.1
East of Mississippi River	5,100	5,181	5,149	15,156	15,221	-0.4	236,069	206,882	14.1
West of Mississippi River	6,505	6,735	6,503	19,582	19,224	1.9	341,125	319,722	6.7
Bituminous and lignite	11,570	11,880	11,612	34,635	34,324	0.9	575,247	524,304	9.7
Anthracite	35	36	41	103	121	-14.8	1,948	2,300	-15.3
U.S. total	11,605	11,916	11,653	34,738	34,445	0.8	577,194	526,604	9.6
Railroad cars loaded	66,313	67,867	63,474	196,341	188,002	4.4	3,334,961	2,972,428	12.2

Source: Energy Information Administration



Weekly Electric Output

Volume 90 No. 4

OUTPUT FOR WEEK ENDED - Jan 22, 2022

Jan 26, 2022

The net available amount of electric energy distributed by the Total Electric Utility Industry* for the week ended Saturday, **Jan 22, 2022** was **85,137** gigawatthours (GWh), according to the Edison Electric Institute. This is equivalent to **188** on the weekly electric output index.

WEEKLY ELECTRIC OUTPUT BY GEOGRAPHIC DIVISION

(48 CONTIGUOUS STATES)

	Week Ended January 22		52 Weeks Ended January 22	
	GWh Output	% Increase Over Corresponding Week of 2021	GWh Output	% Increase Over Corresponding Period of 2021
New England	2,563	10.2	116,412	1.8
Mid-Atlantic	9,167	11.0	420,135	2.9
Central Industrial	14,126	8.0	652,759	3.5
West Central	6,967	6.9	337,230	5.1
Southeast	22,675	13.2	1,014,819	2.5
South Central	15,546	17.5	780,475	2.7
Rocky Mountain	5,870	5.2	293,540	2.3
Pacific Northwest	3,519	-0.3	159,846	4.3
Pacific Southwest	4,704	2.0	268,994	1.1
Total United States	85,137	10.3	4,044,209	2.9

WEEKLY ELECTRIC OUTPUT IN PREVIOUS WEEKS--GWh

Week Ended	2022	Week Ended	2021	% Inc. (22/21)	52 Weeks Ended	2022	% Inc. (22/21)
Jan 01	72,412	Jan 02	74,553	-2.9	Jan 01	4,030,494	2.6
Jan 08	82,453	Jan 09	78,040	5.7	Jan 08	4,034,906	2.7
Jan 15	80,764	Jan 16	79,427	1.7	Jan 15	4,036,244	2.6
Jan 22	85,137	Jan 23	77,172	10.3	Jan 22	4,044,209	2.9
Jan 22	320,767	Jan 23	309,192	3.7	YEAR TO DATE, FIRST 4 WEEKS		

WEEKLY ELECTRIC OUTPUT INDEX--TOTAL U.S.*

SEASONALLY ADJUSTED 1982 = 100

Week Ended	2022	Week Ended	2021	Week Ended	2020
Jan 01	160	Jan 02	160	Jan 04	158
Jan 08	179	Jan 09	165	Jan 11	163
Jan 15	176	Jan 16	169	Jan 18	163
Jan 22	188	Jan 23	166	Jan 25	157

* Excludes Alaska and Hawaii.

+ Includes investor-owned companies, cooperatives and government-owned utilities.

Copyright © 2022 Edison Electric Institute. All rights reserved.

**EI WEEKLY ELECTRIC OUTPUT BY GEOGRAPHIC DIVISION
(48 CONTIGUOUS STATES)**

	Week Ended			NMA CUMULATIVE JANUARY WEEK ONE TO			52 Weeks Ended		
	22-Jan 2022 GWh Output	23-Jan 2021 GWh Output	% Increase Over Corresponding Week	22-Jan 2022 GWh Output	23-Jan 2021 GWh Output	% Increase Over Corresponding Week	22-Jan 2022 GWh Output	23-Jan 2021 GWh Output	% Increase Over Corresponding Week
New England	2,563	2,327	10.1%	9,793	9,312	5.2%	116,412	114,307	1.8%
Mid-Atlantic	9,167	8,255	11.0%	34,142	32,304	5.7%	420,135	408,230	2.9%
Central Industrial	14,126	13,081	8.0%	53,176	51,459	3.3%	652,759	630,962	3.5%
West Central	6,967	6,518	6.9%	27,412	25,316	8.3%	337,230	320,942	5.1%
Southeast	22,675	20,031	13.2%	80,236	80,255	0.0%	1,014,819	990,086	2.5%
South Central	15,546	13,236	17.5%	58,246	55,789	4.4%	780,475	759,872	2.7%
Rocky Mountain	5,870	5,580	5.2%	22,930	22,337	2.7%	293,540	286,832	2.3%
Pacific Northwest	3,519	3,531	-0.3%	15,436	13,760	12.2%	159,846	153,305	4.3%
Pacific Southwest	4,704	4,613	2.0%	19,395	18,660	3.9%	268,994	266,078	1.1%
Total United States ^{1/}	<u>85,137</u>	<u>77,172</u>	10.3%	<u>320,766</u>	<u>309,192</u>	3.7%	<u>4,044,210</u>	<u>3,930,614</u>	2.9%
Coal Regions Only ^{2/}	74,351	66,701	11.5%	276,142	267,460	3.2%	3,498,958	3,396,924	3.0%

Notes: EEI output data are an estimate of electricity load made available for distribution derived as weekly net generation + purchases from non-utilities + net imports - exports - sales for resale. It is not meant to be a measure of electricity generation for the U.S. EEI survey data represent the majority of national distribution (large utilities, large government power projects, some independent and large municipal power projects). The remaining segment of the industry (smaller producers) is estimated. Non-utility generation is captured via direct sales to utilities.

^{1/} Excludes Alaska and Hawaii

^{2/} Excludes New England and Pacific regions

SOURCE: Edison Electric Institute (EEI), *Weekly Electric Output Report*.

AMERICAN IRON AND STEEL INSTITUTE
 25 Massachusetts Avenue, NW, Suite 800
 Washington, D.C. 20001

January 24, 2022

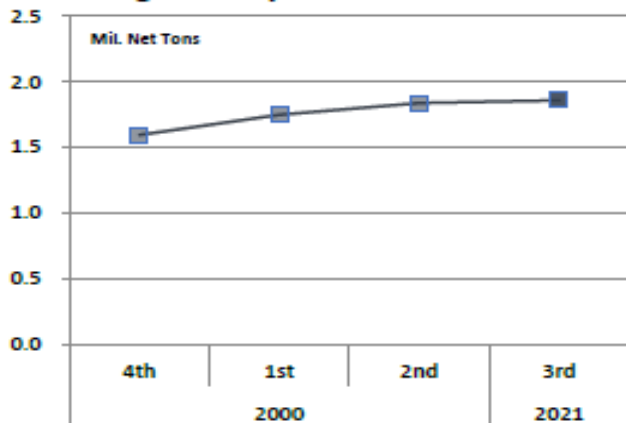
ESTIMATED WEEKLY RAW STEEL * PRODUCTION

<u>Period</u>	<u>Thousand Net Tons</u>	<u>Percent Change from Previous Period</u>	<u>Percent Capability Utilization**</u>	<u>Production by District</u>		
				<u>Week Ending Jan 22</u>	<u>Week Ending Jan 15</u>	
<u>Week Ending</u>				North East	168	170
				Great Lakes	634	629
January 22, 2022	1,803	-1.6	81.9	Midwest	201	209
January 22, 2021	1,736	3.9	76.6	Southern	720	742
January 15, 2022	1,833	1.1	83.2	Western	80	83
				Total	1,803	1,833
<u>Year-to-Date +</u>						
January 22, 2022	5,704	4.5	82.4			
January 22, 2021	5,456	-	76.6			

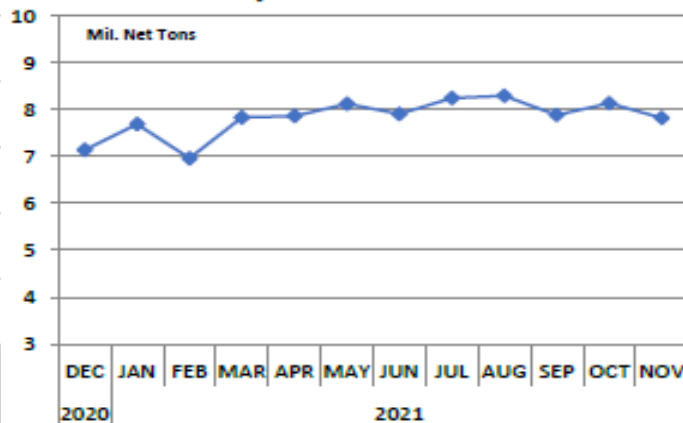
*Raw steel production tonnage included in this report is estimated based on a sampling of steel producers (50% of domestic producers). Therefore, this report should be used primarily to assess production trends. The AISI production report "AIS 7," produced monthly and available by subscription, provides a more accurate summary of steel production based on data supplied by companies representing approximately 75% of U.S. production capacity plus includes revisions for previous months.

NOTE: Capability for the fourth quarter 2021 is approximately 29.0 million net tons. Given the large number of changes to steelmaking capability and the evolving market, AISI is updating the capacity statistics.

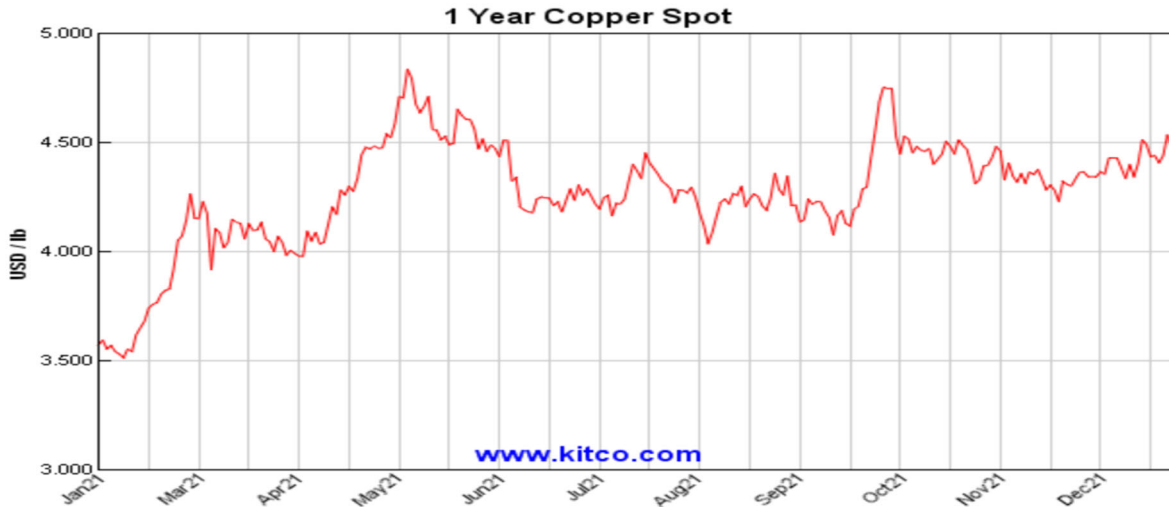
Average Weekly Raw Steel Production



Monthly Raw Steel Production



*Steel in the first solid state after melting suitable for further processing or sale, including ingots, steel for castings and strand or pressure cast blooms, slabs or other product forms. ** Based on tonnage capability to produce raw steel for a sustained full order book.



Source: Kitco website - www.kitco.com/connecting.html

U.S. Rail Traffic¹
Week 3, 2022 – Ended January 22, 2022

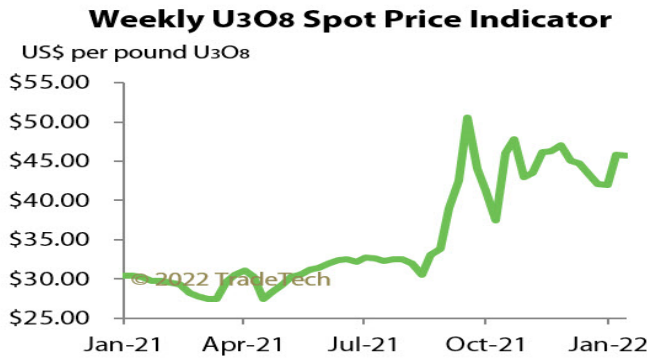
	This Week		Year-To-Date		
	Cars	vs 2021	Cumulative	Avg/wk ²	vs 2021
Total Carloads	223,395	-3.3%	667,062	222,354	-4.5%
Chemicals	34,024	5.9%	102,396	34,132	0.1%
Coal	66,313	4.3%	189,096	63,032	4.1%
Farm Products excl. Grain, and Food	15,824	-2.0%	47,588	15,863	-4.5%
Forest Products	9,865	-3.1%	29,518	9,839	-2.7%
Grain	23,259	-14.8%	69,555	23,185	-15.6%
Metallic Ores and Metals	20,110	-3.6%	61,791	20,597	-8.7%
Motor Vehicles and Parts	10,845	-23.2%	33,973	11,324	-21.0%
Nonmetallic Minerals	25,354	0.5%	78,334	26,111	2.8%
Petroleum and Petroleum Products	9,608	-23.2%	28,284	9,428	-21.7%
Other	8,193	-8.5%	26,527	8,842	-8.0%
Total Intermodal Units	254,067	-14.8%	744,778	248,259	-15.7%
Total Traffic	477,462	-9.8%	1,411,840	470,613	-10.8%

¹ Excludes U.S. operations of Canadian Pacific, CN and GMXT.

² Average per week figures may not sum to totals as a result of independent rounding.

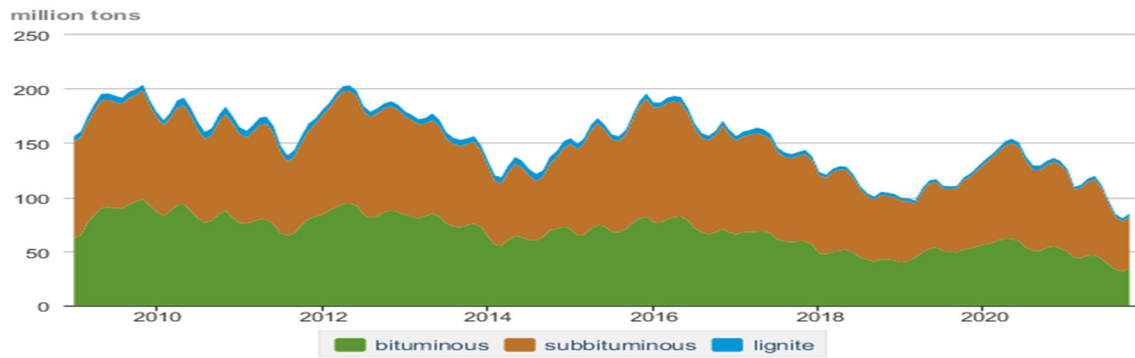
Source: AAR website - <https://www.aar.org/Pages/NEWS-and-EVENTS.aspx>

Trade Tech's and UX's Uranium Price Indicators



Sources: Trade Tech, Uranium Info Website – www.uranium.info ; Source: Ux Consulting Co., LLC – <http://www.uxc.com>

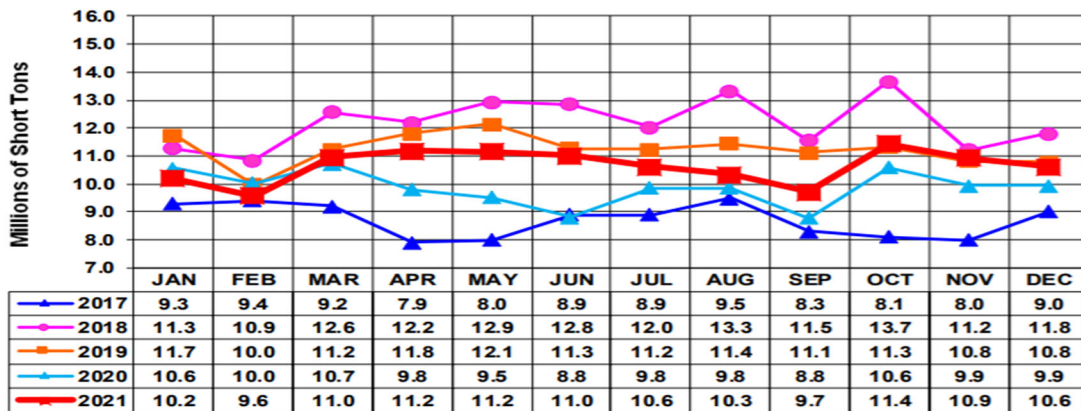
Coal stocks by type, January 2009 - October 2021



Source: U.S. Energy Information Administration

Source: Energy Information Administration, Electric Monthly Update

Coal and Coke Monthly Indicator for Internal U.S. Waterways



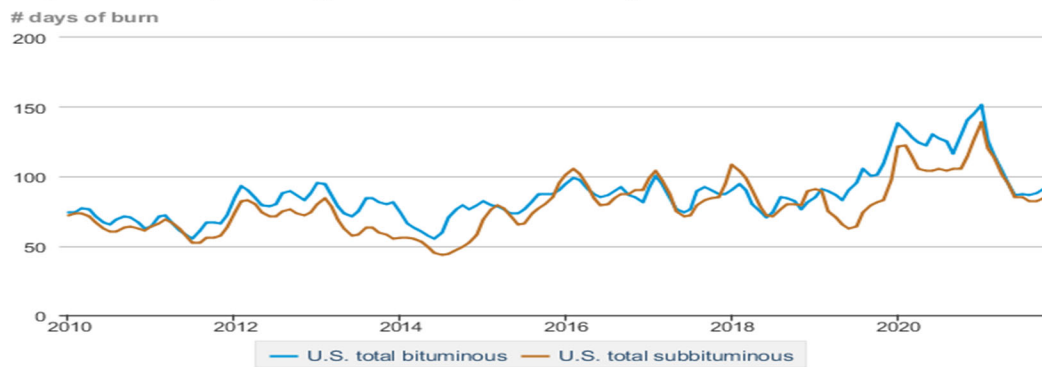
Source: Waterborne Commerce Statistics Center

Average weekly coal commodity spot prices
dollars per short ton

	Week ending					Week ago
	12/24/21	12/31/21	01/07/22	01/14/22	01/21/22	change
Central Appalachia 12,500 Btu, 1.2 SO ₂	\$92.50	\$92.50	\$86.55	\$86.55	\$89.70	\$3.15
Northern Appalachia 13,000 Btu, < 3.0 SO ₂	\$74.20	\$74.20	\$70.80	\$70.80	\$73.35	\$2.55
Illinois Basin 11,800 Btu, 5.0 SO ₂	\$44.55	\$44.55	\$86.55	\$86.55	\$87.90	\$1.35
Powder River Basin 8,800 Btu, 0.8 SO ₂	\$30.10	\$30.10	\$28.05	\$28.05	\$29.05	\$1.00
Uinta Basin 11,700 Btu, 0.8 SO ₂	\$33.15	\$33.15	\$31.00	\$31.00	\$32.10	\$1.10

Source: Energy Information Administration (with permission from S&P Global), *Coal Market Report*

Days of burn by non-lignite coal rank, January 2010 - October 2021



Source: U.S. Energy Information Administration

Source: Energy Information Administration, *Electricity Monthly Update Report*

Temperature – heating & cooling degree days (week ending Jan 13)

Region	HDDs			CDDs		
	Current total	Deviation from normal	Deviation from last year	Current total	Deviation from normal	Deviation from last year
New England	283	10	42	0	0	0
Middle Atlantic	272	11	37	0	0	0
E N Central	290	-6	42	0	0	0
W N Central	293	-25	48	0	0	0
South Atlantic	183	0	0	9	1	6
E S Central	183	-7	-24	0	-2	0
W S Central	107	-34	-61	1	-2	1
Mountain	197	-39	-28	0	0	0
Pacific	94	-30	-7	0	0	0
United States	213	-13	11	2	0	1

Source: Chart by the U.S. Energy Information Administration (EIA), based on data from the National Oceanic and Atmospheric Administration
Note: HDDs=heating degree days; CDDs=cooling degree days

Source: Energy Information Administration, *Natural Gas Weekly Update*.

USGS Production of Selected Mineral Commodities	2021 Year to Date - 3rd Quarter	2020 Year to Date - 3rd Quarter	Percent Change
Aluminum, secondary (000 Mt.)	628.0	543.0	16%
Cement (Mil. Mt.)	67.6	66.3	2%
Copper (000 Mt.)	912.0	906.0	1%
Gold (Mt.)	135.0	144.0	-6%
Gypsum (Mil. Mt.)	14.2	12.8	11%
Iron Ore (Mil. Mt.)	34.9	27.0	29%
Lead (000 Mt.)	220.0	219.0	0%
Molybdenum (000 Mt.)	31.8	37.7	-16%
Phosphate rock (Mil. Mt.)	16.6	18.0	-8%
Sand & gravel, construction (Mil. Mt.)	753.0	705.0	7%
Silver (Mt.)	773.0	760.0	2%
Soda ash (Mil. Mt.)	8.7	7.3	19%
Stone, crushed (Mil. Mt.)	1,140.0	1,110.0	3%
Zinc (000 Mt.)	530.0	505.0	5%

Source: U.S. Geological Survey, Mineral Industry Surveys. Percent change based on USGS rounded numbers. 2020 data are preliminary estimates. W - withheld, N/A - not available



Source: Graph by the U.S. Energy Information Administration (EIA), based on data from Natural Gas Intelligence
Note: Henry Hub prices reported for February 16 and 17, 2021, exceeded the published range, averaging \$16.96/MMBtu and \$23.61/MMBtu, respectively.

Source: Energy Information Administration, *Natural Gas Weekly*.

Coal stocks and average number of days of burn for non-lignite coal by region (electric power sector)

Zone	Coal	November 2021		November 2020		% Change of Stocks	October 2021		% Change of Stock:
		Stocks (1000 tons)	Days of Burn	Stocks (1000 tons)	Days of Burn		Stocks (1000 tons)	Days of Burn	
Northeast	Bituminous	2,525	365	4,135	325	-38.9%	2,164	350	16.7%
	Subbituminous	.	.	160	139
South	Bituminous	13,129	90	21,268	130	-38.3%	12,052	85	8.9%
	Subbituminous	3,565	59	6,539	100	-45.5%	3,297	52	8.1%
Midwest	Bituminous	9,827	93	14,001	121	-29.8%	9,252	86	6.2%
	Subbituminous	19,739	104	28,798	133	-31.5%	19,179	104	2.9%
West	Bituminous	1,993	101	3,934	197	-49.3%	1,800	88	10.8%
	Subbituminous	17,034	86	24,124	103	-29.4%	15,142	73	12.5%
U.S. Total	Bituminous	27,475	100	43,338	140	-36.6%	25,268	91	8.7%
	Subbituminous	40,338	90	59,621	114	-32.3%	37,618	84	7.2%

Source: Energy Information Administration, *Electricity Monthly Update*

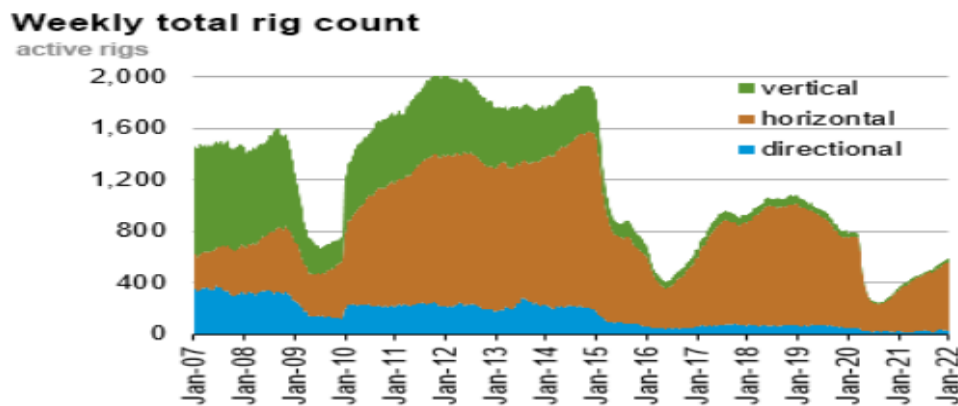
EIA Working Natural Gas Underground Storage

Region	Stocks billion cubic feet (Bcf)		
	2022-01-14	2022-01-07	change
East	669	730	-61
Midwest	770	835	-65
Mountain	151	159	-8
Pacific	201	204	-3
South Central	1,019	1,088	-69
Total	2,810	3,016	-206

Source: U.S. Energy Information Administration Form EIA-912, *Weekly Underground Natural Gas Storage Report*

Source: Energy Information Administration, *Natural Gas Weekly Update*

EIA Natural Gas Rig Count



Source: Graph by the U.S. Energy Information Administration (EIA), based on data from Baker Hughes Company

Source: Energy Information Administration, *Natural Gas Weekly Update*

EIA Oil and Natural Gas Rig Productivity

Region	NEW-WELL PRODUCTION PER RIG BY REGION			PRODUCTION BY REGION			DUC WELLS BY REGION		
	New-well oil production per rig barrels/day			New-well gas production per rig thousand cubic feet/day					
	December 2021	January 2022	change	December 2021	January 2022	change	December 2021	January 2022	change
Anadarko	794	778	(16)	4,084	3,961	(123)			
Appalachia	188	188	-	30,284	30,345	61			
Bakken	2,130	2,088	(42)	2,983	2,923	(60)			
Eagle Ford	2,370	2,363	(7)	8,506	8,480	(26)			
Haynesville	19	19	-	11,865	11,966	101			
Niobrara	1,636	1,603	(33)	4,440	4,351	(89)			
Permian	1,214	1,210	(4)	2,281	2,269	(12)			
Rig-weighted average	1,142	1,140	(2)	6,272	6,312	40			

Source: Energy Information Administration, *Drilling Productivity Report*