
NATIONAL MINING ASSOCIATION

Weekly Statistical Summary

February 4, 2022 Edition
(Data for Week Ending January 29, 2022)

Prepared by
National Mining Association



101 Constitution Avenue, NW, Suite 500 East
Washington, DC, 20001
Phone (202) 463-2600
<http://www.nma.org>

NMA Weekly Statistical Summary

Vol. 60, No.5
Dated 02/04/22

PRODUCTION, CONSUMPTION & TRADE

	Week Ended			* Cumulative Jan 1 to		
	01/29/22	01/30/21	% Chng	01/29/22	01/29/21	% Chng
EIA Coal Production (000 Tons):						
Week Ended/Year to Date	11,850	11,273	5.1%	46,587	45,767	1.8%
52 Weeks Ended	577,771	525,375	10.0%			
AAR Coal Rail Cars Loaded:	67,825	61,405	10.5%	264,166	249,675	5.8%
DOC Coal Trade (000 Tons)						
Exports:						
	Nov 21/20		% Chng	Jan - Nov 21/20		% Chng
Metallurgical	3,577	3,735	-4.2%	41,381	38,006	8.9%
Steam Bit. *	3,410	3,208	6.3%	36,125	23,801	51.8%
Lignite	6	6	0.0%	71	83	-14.5%
Anthracite	6	74	-91.9%	281	236	19.1%
Total	6,999	7,023	-0.3%	77,858	62,126	25.3%
Imports:	436	639	-31.8%	4,701	4,676	0.5%
EI Electric Output (Mil. Kwh)						
	Week Ended		% Chng	Cumulative Week 1 to		% Chng
	01/29/22	01/30/21		01/29/22	01/30/21	
EI Electric Total Output (Mil. Kwh)	85,093	78,912	7.8%	405,860	388,104	4.6%
EI Coal Region Output (Mil. Kwh)	74,034	67,772	9.2%	350,176	335,232	4.5%
AISI Raw Steel Output (000 Tons)	1,796	1,736	3.5%	7,500	7,192	4.3%

EIA (S&P Global) AVERAGE COAL & NATURAL GAS SPOT PRICES Dollars Per Short Ton

Average Coal Spot Prices (\$/Short Ton)	Week Ending			Natural Gas Spot Prices (\$/MMBtu)	
	01/28/22	01/21/22	% Chng	Wed.	01/26/22
Central App, 12,500 Btu, 1.2 SO ₂	\$89.70	\$89.70	0.0%	Henry Hub	4.37
Northern App, 13,000 Btu, < 3.0 SO ₂	73.35	73.35	0.0%	New York	11.92
Illinois Basin, 11,800, 5.0 SO ₂	75.50	87.90	-14.1%	Chicago	4.26
Powder River Basin, 8,800 Btu 0.8 SO ₂	23.90	29.05	-17.7%	Cal.Comp.Avg.	4.83
Uinta Basin, 11,700 Btu, 0.8 SO ₂	29.35	32.10	-8.6%		

Coal exports and Imports are "as reported" (not revised); *Steam excludes lignite & anthracite. All data in this report are preliminary and subject to revision. r/ revised.

Sources: EIA; Edison Electric Institute; American Iron & Steel Institute; Association of American Railroads; Dept. of Commerce; S&P Global; NGI's Daily Gas Price Index



NMA

THE AMERICAN RESOURCE

National Mining Association Web Site: [http:// www.nma.org](http://www.nma.org)

EIA Estimated Weekly U.S. Coal Production Overview

Coal-Producing Region & State (thousand short tons)	Week Ended			Year to Date			52 Weeks Ended		
	1/29/2022 (week 5)	1/22/2022 (week 4)	1/30/2021 (week 5)	1/29/2022	1/29/2021	% Change	1/29/2022	1/30/2021	% Change
Alabama	174	195	250	730	1,015	-28.1	9,739	11,956	-18.5
Alaska	24	21	25	90	101	-10.4	1,062	1,014	4.7
Colorado	214	215	195	853	790	8.0	11,165	9,833	13.5
Illinois	903	939	900	3,630	3,652	-0.6	39,513	32,116	23.0
Indiana	368	356	392	1,441	1,592	-9.4	18,866	19,294	-2.2
Kentucky Total	554	549	529	2,187	2,148	1.8	26,621	23,664	12.5
Eastern (KY)	211	217	185	843	753	11.9	9,980	8,165	22.2
Western (KY)	343	332	344	1,345	1,395	-3.6	16,641	15,499	7.4
Louisiana	4	4	5	17	19	-8.9	287	533	-46.2
Maryland	27	25	28	106	112	-5.7	1,274	1,126	13.1
Mississippi	63	63	65	246	265	-6.9	3,123	2,645	18.1
Missouri	1	1	1	6	6	-0.5	65	148	-56.1
Montana	556	552	528	2,200	2,142	2.7	28,077	25,643	9.5
New Mexico	149	155	189	602	767	-21.5	8,339	9,832	-15.2
North Dakota	516	538	562	2,088	2,282	-8.5	27,024	26,034	3.8
Ohio	49	43	60	187	246	-24.0	2,633	3,360	-21.6
Oklahoma	s	s	.
Pennsylvania Total	1,042	1,016	945	4,083	3,838	6.4	44,446	36,005	23.4
Anthracite (PA)	34	35	40	138	161	-14.5	1,942	2,284	-15.0
Bituminous (PA)	1,008	982	906	3,945	3,677	7.3	42,503	33,720	26.0
Tennessee	57	.
Texas	280	279	299	1,117	1,215	-8.1	16,567	19,008	-12.8
Utah	237	230	251	932	1,021	-8.7	12,419	12,864	-3.5
Virginia	232	227	215	913	874	4.5	11,040	9,530	15.8
West Virginia Total	1,727	1,686	1,597	6,773	6,483	4.5	78,973	67,074	17.7
Northern (WV)	1,023	995	921	4,010	3,738	7.3	45,623	37,599	21.3
Southern (WV)	704	691	676	2,763	2,745	0.6	33,350	29,476	13.1
Wyoming	4,727	4,508	4,236	18,385	17,200	6.9	236,536	213,637	10.7
Appalachian Total	3,463	3,410	3,281	13,633	13,320	2.3	158,085	137,274	15.2
Interior Total	1,963	1,974	2,006	7,803	8,144	-4.2	95,063	89,244	6.5
Western Total	6,423	6,220	5,986	25,151	24,303	3.5	324,623	298,857	8.6
East of Mississippi River	5,140	5,100	4,982	20,296	20,225	0.4	236,228	206,828	14.2
West of Mississippi River	6,709	6,505	6,291	26,291	25,543	2.9	341,543	318,548	7.2
Bituminous and Lignite	11,815	11,570	11,233	46,450	45,606	1.8	575,829	523,091	10.1
Anthracite	34	35	40	138	161	-14.5	1,942	2,284	-15.0
U.S. Total	11,850	11,605	11,273	46,587	45,767	1.8	577,771	525,375	10.0
Railroad Cars Loaded	67,825	66,313	61,405	264,166	249,675	5.8	3,341,381	2,964,572	12.7

Source: Energy Information Administration



Weekly Electric Output

Volume 90 No. 5

OUTPUT FOR WEEK ENDED - Jan 29, 2022

Feb 02, 2022

The net available amount of electric energy distributed by the Total Electric Utility Industry* for the week ended Saturday, **Jan 29, 2022** was **85,093** gigawatthours (GWh), according to the Edison Electric Institute. This is equivalent to **205** on the weekly electric output index.

WEEKLY ELECTRIC OUTPUT BY GEOGRAPHIC DIVISION

(48 CONTIGUOUS STATES)

	Week Ended January 29		52 Weeks Ended January 29	
	GWh Output	% Increase Over Corresponding Week of 2021	GWh Output	% Increase Over Corresponding Period of 2021
New England	2,570	1.3	116,444	1.6
Mid-Atlantic	9,215	3.2	420,422	2.8
Central Industrial	14,547	7.9	653,820	3.5
West Central	7,059	6.7	337,670	5.1
Southeast	22,377	13.7	1,017,519	2.7
South Central	14,988	13.0	782,199	2.9
Rocky Mountain	5,848	0.8	293,589	2.3
Pacific Northwest	3,711	-0.7	159,821	4.0
Pacific Southwest	4,778	-1.8	268,907	1.0
Total United States	85,093	7.8	4,050,391	3.0

WEEKLY ELECTRIC OUTPUT IN PREVIOUS WEEKS--GWh

Week Ended	2022	Week Ended	2021	% Inc. (22/21)	52 Weeks Ended	2022	% Inc. (22/21)
Jan 08	82,453	Jan 09	78,040	5.7	Jan 08	4,034,906	2.7
Jan 15	80,764	Jan 16	79,427	1.7	Jan 15	4,036,244	2.6
Jan 22	85,137	Jan 23	77,172	10.3	Jan 22	4,044,209	2.9
Jan 29	85,093	Jan 30	78,912	7.8	Jan 29	4,050,391	3.0
Jan 29	405,860	Jan 30	388,104	4.6	YEAR TO DATE, FIRST 5 WEEKS		

WEEKLY ELECTRIC OUTPUT INDEX--TOTAL U.S.*

SEASONALLY ADJUSTED 1982 = 100

Week Ended	2022	Week Ended	2021	Week Ended	2020
Jan 08	179	Jan 09	165	Jan 11	163
Jan 15	176	Jan 16	169	Jan 18	163
Jan 22	188	Jan 23	166	Jan 25	157
Jan 29	205	Jan 30	174	Feb 01	171

* Excludes Alaska and Hawaii.

+ Includes investor-owned companies, cooperatives and government-owned utilities.

Copyright © 2022 Edison Electric Institute. All rights reserved.

**EEl WEEKLY ELECTRIC OUTPUT BY GEOGRAPHIC DIVISION
(48 CONTIGUOUS STATES)**

	Week Ended			NMA CUMULATIVE JANUARY WEEK ONE TO			52 Weeks Ended		
	29-Jan	30-Jan	% Increase Over Corresponding Week	29-Jan	30-Jan	% Increase Over Corresponding Week	29-Jan	30-Jan	% Increase Over Corresponding Week
	2022 GWh Output	2021 GWh Output		2022 GWh Output	2021 GWh Output		2022 GWh Output	2021 GWh Output	
New England	2,570	2,538	1.3%	12,363	11,850	4.3%	116,444	114,579	1.6%
Mid-Atlantic	9,215	8,928	3.2%	43,357	41,232	5.2%	420,422	408,909	2.8%
Central Industrial	14,547	13,485	7.9%	67,723	64,944	4.3%	653,820	631,511	3.5%
West Central	7,059	6,619	6.6%	34,471	31,935	7.9%	337,670	321,206	5.1%
Southeast	22,377	19,677	13.7%	102,613	99,932	2.7%	1,017,519	990,632	2.7%
South Central	14,988	13,264	13.0%	73,234	69,053	6.1%	782,199	759,906	2.9%
Rocky Mountain	5,848	5,799	0.8%	28,778	28,136	2.3%	293,589	287,108	2.3%
Pacific Northwest	3,711	3,736	-0.7%	19,147	17,496	9.4%	159,821	153,654	4.0%
Pacific Southwest	4,778	4,866	-1.8%	24,173	23,526	2.8%	268,907	266,203	1.0%
Total United States ^{1/}	<u>85,093</u>	<u>78,912</u>	7.8%	<u>405,859</u>	<u>388,104</u>	4.6%	<u>4,050,391</u>	<u>3,933,708</u>	3.0%
Coal Regions Only ^{2/}	74,034	67,772	9.2%	350,176	335,232	4.5%	3,505,219	3,399,272	3.1%

Notes: EEI output data are an estimate of electricity load made available for distribution derived as weekly net generation + purchases from non-utilities + net imports - exports - sales for resale. It is not meant to be a measure of electricity generation for the U.S. EEI survey data represent the majority of national distribution (large utilities, large government power projects, some independent and large municipal power projects). The remaining segment of the industry (smaller producers) is estimated. Non-utility generation is captured via direct sales to utilities.

^{1/} Excludes Alaska and Hawaii

^{2/} Excludes New England and Pacific regions

SOURCE: Edison Electric Institute (EEI), *Weekly Electric Output Report*.

AMERICAN IRON AND STEEL INSTITUTE
 25 Massachusetts Avenue, NW, Suite 800
 Washington, D.C. 20001

January 31, 2022

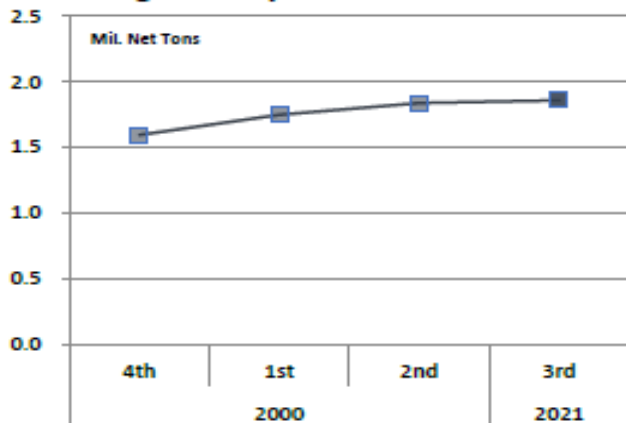
ESTIMATED WEEKLY RAW STEEL * PRODUCTION

<u>Period</u>	<u>Thousand Net Tons</u>	<u>Percent Change from Previous Period</u>	<u>Percent Capability Utilization**</u>	<u>Production by District</u>		
				<u>Week Ending Jan 29</u>	<u>Week Ending Jan 22</u>	
<u>Week Ending</u>				North East	170	168
				Great Lakes	624	634
January 29, 2022	1,796	-0.4	81.6	Midwest	211	201
January 29, 2021	1,736	3.5	76.6	Southern	716	720
January 22, 2022	1,803	-1.6	81.9	Western	75	80
				Total	1,796	1,803
<u>Year-to-Date +</u>						
January 29, 2022	7,500	4.3	82.2			
January 29, 2021	7,192	-	76.6			

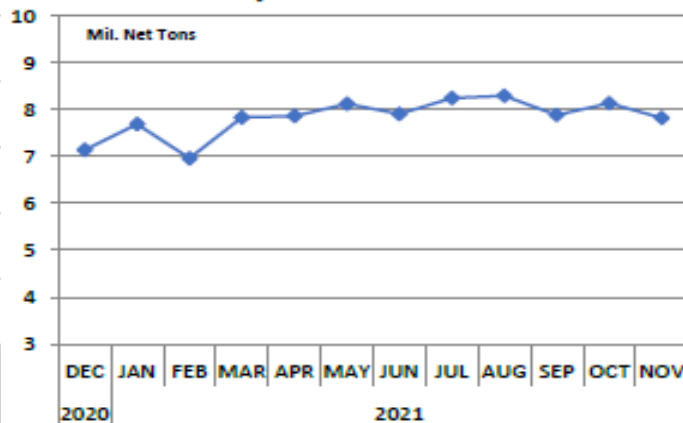
*Raw steel production tonnage included in this report is estimated based on a sampling of steel producers (50% of domestic producers). Therefore, this report should be used primarily to assess production trends. The AISI production report "AIS 7," produced monthly and available by subscription, provides a more accurate summary of steel production based on data supplied by companies representing approximately 75% of U.S. production capacity plus includes revisions for previous months.

NOTE: Capability for the fourth quarter 2021 is approximately 29.0 million net tons. Given the large number of changes to steelmaking capability and the evolving market, AISI is updating the capacity statistics.

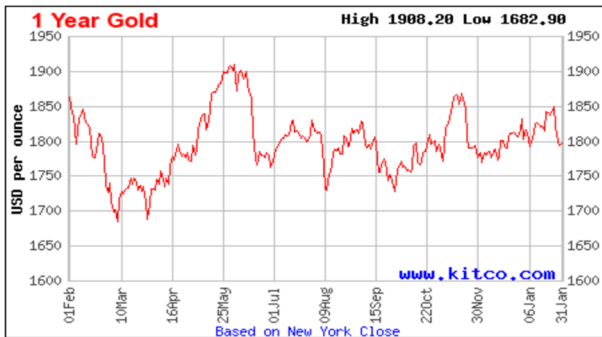
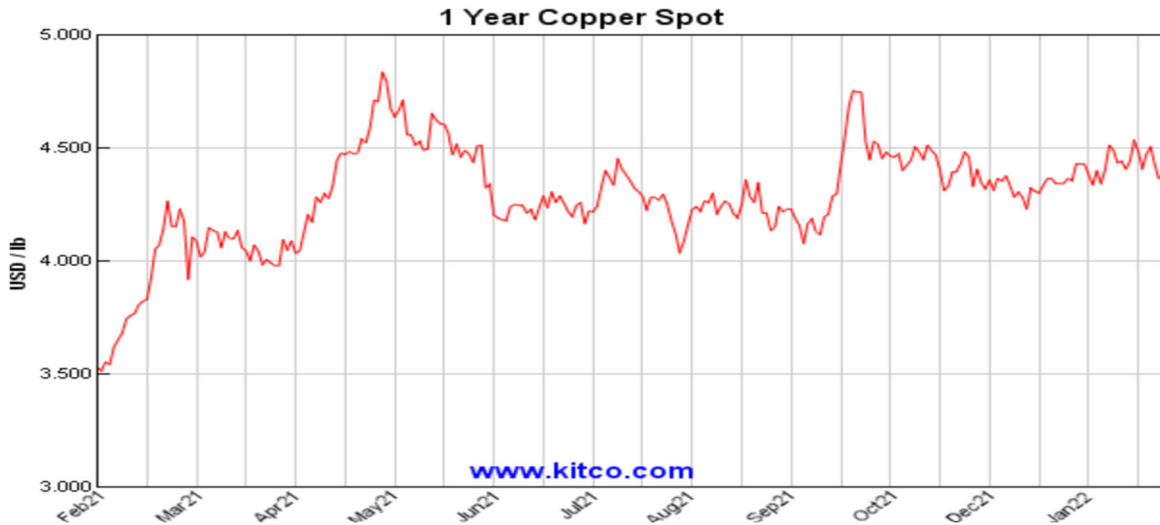
Average Weekly Raw Steel Production



Monthly Raw Steel Production



*Steel in the first solid state after melting suitable for further processing or sale, including ingots, steel for castings and strand or pressure cast blooms, slabs or other product forms. ** Based on tonnage capability to produce raw steel for a sustained full order book.



Source: Kitco website - www.kitco.com/connecting.html

U.S. Rail Traffic¹
Week 4, 2022 – Ended January 29, 2022

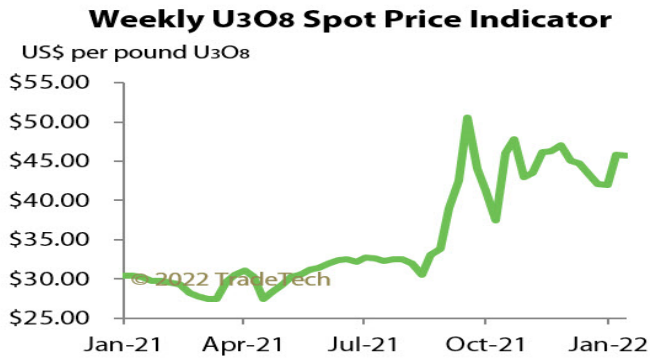
	This Week		Year-To-Date		
	Cars	vs 2021	Cumulative	Avg/wk ²	vs 2021
Total Carloads	235,203	1.5%	902,265	225,566	-3.0%
Chemicals	34,977	2.8%	137,373	34,343	0.8%
Coal	67,825	10.1%	256,921	64,230	5.6%
Farm Products excl. Grain, and Food	16,867	3.0%	64,455	16,114	-2.7%
Forest Products	10,107	0.7%	39,625	9,906	-1.8%
Grain	24,959	-9.2%	94,514	23,629	-14.0%
Metallic Ores and Metals	21,146	-2.5%	82,937	20,734	-7.2%
Motor Vehicles and Parts	12,904	-16.4%	46,877	11,719	-19.8%
Nonmetallic Minerals	27,703	12.4%	106,037	26,509	5.1%
Petroleum and Petroleum Products	9,625	-14.8%	37,909	9,477	-20.1%
Other	9,090	0.1%	35,617	8,904	-6.1%
Total Intermodal Units	256,665	-11.3%	1,001,443	250,361	-14.6%
Total Traffic	491,868	-5.6%	1,903,708	475,927	-9.5%

¹ Excludes U.S. operations of Canadian Pacific, CN and GMXT.

² Average per week figures may not sum to totals as a result of independent rounding.

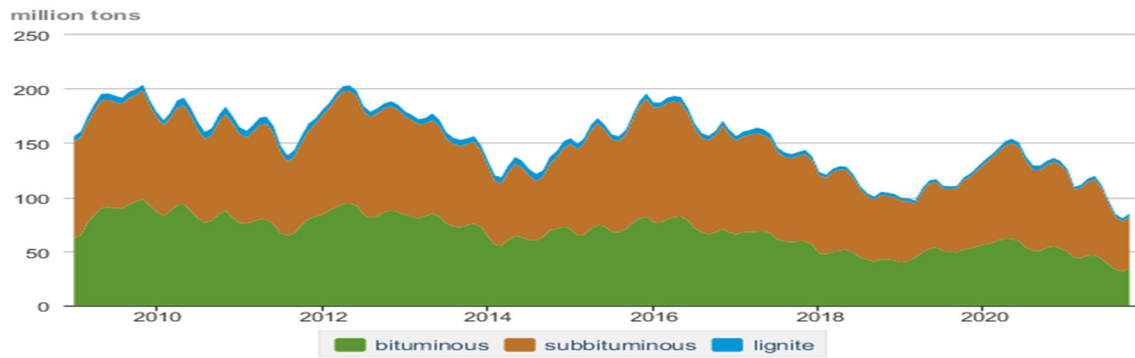
Source: AAR website - <https://www.aar.org/Pages/NEWS-and-EVENTS.aspx>

Trade Tech's and UX's Uranium Price Indicators



Sources: Trade Tech, Uranium Info Website – www.uranium.info ; Source: Ux Consulting Co., LLC – <http://www.uxc.com>

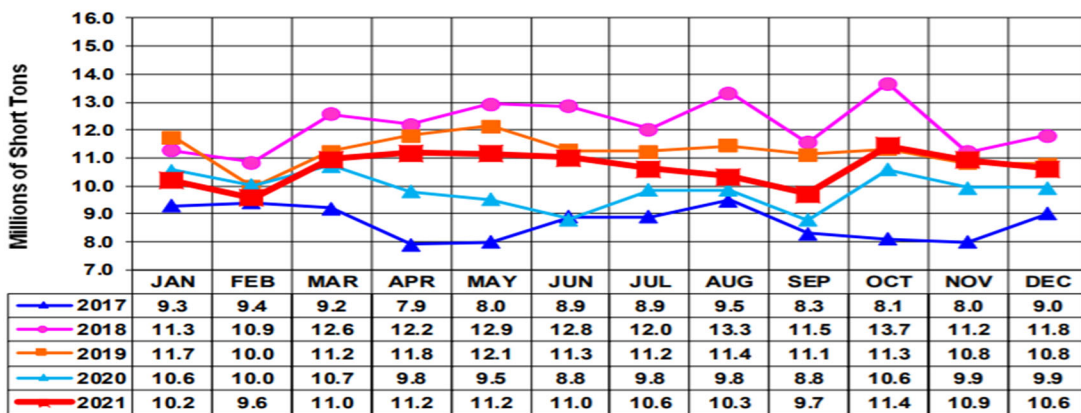
Coal stocks by type, January 2009 - October 2021



Source: U.S. Energy Information Administration

Source: Energy Information Administration, Electric Monthly Update

Coal and Coke Monthly Indicator for Internal U.S. Waterways



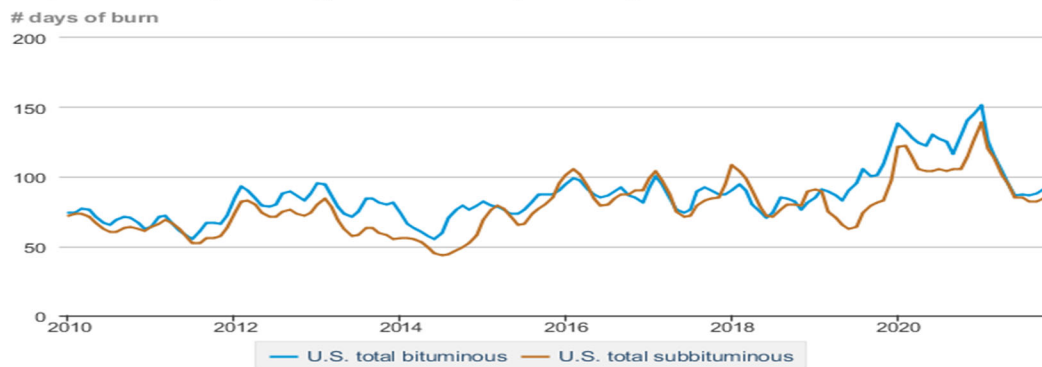
Source: Waterborne Commerce Statistics Center

Average weekly coal commodity spot prices dollars per short ton

	Week ending					Week ago
	12/31/21	01/07/22	01/14/22	01/21/22	01/28/22	change
Central Appalachia 12,500 Btu, 1.2 SO ₂	\$92.50	\$86.55	\$86.55	\$89.70	\$89.70	\$0.00
Northern Appalachia 13,000 Btu, < 3.0 SO ₂	\$74.20	\$70.80	\$70.80	\$73.35	\$73.35	\$0.00
Illinois Basin 11,800 Btu, 5.0 SO ₂	\$44.55	\$86.55	\$86.55	\$87.90	\$75.50	-\$12.40
Powder River Basin 8,800 Btu, 0.8 SO ₂	\$30.10	\$28.05	\$28.05	\$29.05	\$23.90	-\$5.15
Uinta Basin 11,700 Btu, 0.8 SO ₂	\$33.15	\$31.00	\$31.00	\$32.10	\$29.35	-\$2.75

Source: Energy Information Administration (with permission from S&P Global), *Coal Market Report*

Days of burn by non-lignite coal rank, January 2010 - October 2021



Source: U.S. Energy Information Administration

Source: Energy Information Administration, *Electricity Monthly Update Report*

Temperature – heating & cooling degree days (week ending Jan 20)

Region	HDDs			CDDs		
	Current total	Deviation from normal	Deviation from last year	Current total	Deviation from normal	Deviation from last year
New England	282	7	79	0	0	0
Middle Atlantic	269	6	68	0	0	0
E N Central	288	-9	50	0	0	0
W N Central	304	-14	58	0	0	0
South Atlantic	188	5	21	1	-7	1
E S Central	190	0	21	0	-2	0
W S Central	124	-16	7	1	-3	1
Mountain	205	-27	10	0	0	0
Pacific	94	-27	28	0	-1	0
United States	216	-10	39	0	-2	0

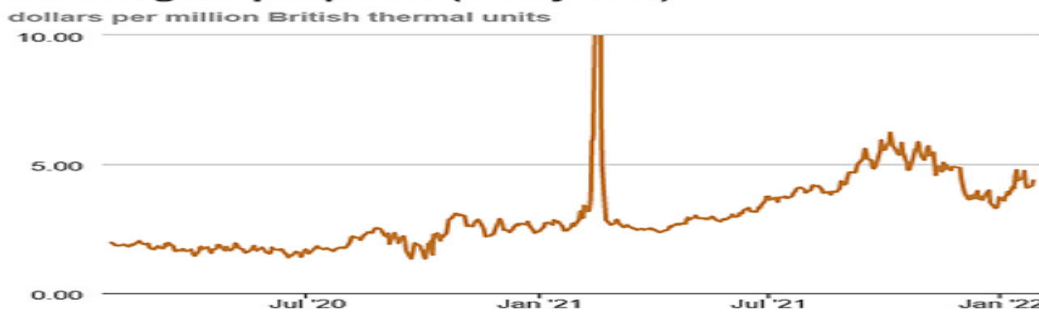
Source: Chart by the U.S. Energy Information Administration (EIA), based on data from the National Oceanic and Atmospheric Administration
Note: HDDs=heating degree days; CDDs=cooling degree days

Source: Energy Information Administration, *Natural Gas Weekly Update*.

USGS Production of Selected Mineral Commodities	2021 Year to Date - 3rd Quarter	2020 Year to Date - 3rd Quarter	Percent Change
Aluminum, secondary (000 Mt.)	628.0	543.0	16%
Cement (Mil. Mt.)	67.6	66.3	2%
Copper (000 Mt.)	912.0	906.0	1%
Gold (Mt.)	135.0	144.0	-6%
Gypsum (Mil. Mt.)	14.2	12.8	11%
Iron Ore (Mil. Mt.)	34.9	27.0	29%
Lead (000 Mt.)	220.0	219.0	0%
Molybdenum (000 Mt.)	31.8	37.7	-16%
Phosphate rock (Mil. Mt.)	16.6	18.0	-8%
Sand & gravel, construction (Mil. Mt.)	753.0	705.0	7%
Silver (Mt.)	773.0	760.0	2%
Soda ash (Mil. Mt.)	8.7	7.3	19%
Stone, crushed (Mil. Mt.)	1,140.0	1,110.0	3%
Zinc (000 Mt.)	530.0	505.0	5%

Source: U.S. Geological Survey, Mineral Industry Surveys. Percent change based on USGS rounded numbers. 2020 data are preliminary estimates. W - withheld, N/A - not available

Natural gas spot prices (Henry Hub)



Source: Graph by the U.S. Energy Information Administration (EIA), based on data from Natural Gas Intelligence
 Note: Henry Hub prices reported for February 16 and 17, 2021, exceeded the published range, averaging \$16.96/MMBtu and \$23.61/MMBtu, respectively.

Source: Energy Information Administration, *Natural Gas Weekly*.

Coal stocks and average number of days of burn for non-lignite coal by region (electric power sector)

Zone	Coal	November 2021		November 2020		% Change of Stocks	October 2021		% Change of Stock
		Stocks (1000 tons)	Days of Burn	Stocks (1000 tons)	Days of Burn		Stocks (1000 tons)	Days of Burn	
Northeast	Bituminous	2,525	365	4,135	325	-38.9%	2,164	350	16.7%
	Subbituminous	.	.	160	139
South	Bituminous	13,129	90	21,268	130	-38.3%	12,052	85	8.9%
	Subbituminous	3,565	59	6,539	100	-45.5%	3,297	52	8.1%
Midwest	Bituminous	9,827	93	14,001	121	-29.8%	9,252	86	6.2%
	Subbituminous	19,739	104	28,798	133	-31.5%	19,179	104	2.9%
West	Bituminous	1,993	101	3,934	197	-49.3%	1,800	88	10.8%
	Subbituminous	17,034	86	24,124	103	-29.4%	15,142	73	12.5%
U.S. Total	Bituminous	27,475	100	43,338	140	-36.6%	25,268	91	8.7%
	Subbituminous	40,338	90	59,621	114	-32.3%	37,618	84	7.2%

Source: Energy Information Administration, *Electricity Monthly Update*

EIA Working Natural Gas Underground Storage

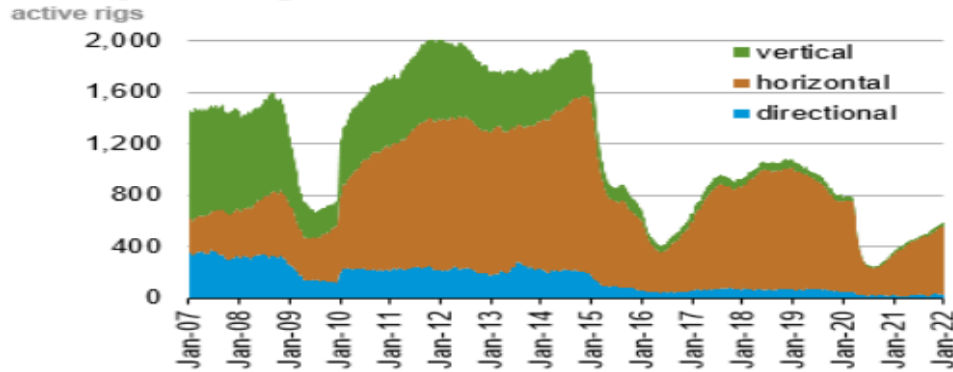
Working gas in underground storage

Region	Stocks billion cubic feet (Bcf)		
	2022-01-21	2022-01-14	change
East	609	669	-60
Midwest	701	770	-69
Mountain	143	151	-8
Pacific	201	201	0
South Central	938	1,019	-81
Total	2,591	2,810	-219

Source: U.S. Energy Information Administration Form EIA-912, *Weekly Underground Natural Gas Storage Report*

EIA Natural Gas Rig Count

Weekly total rig count



Source: Graph by the U.S. Energy Information Administration (EIA), based on data from Baker Hughes Company

Source: Energy Information Administration, *Natural Gas Weekly Update*

EIA Oil and Natural Gas Rig Productivity

NEW-WELL PRODUCTION PER RIG BY REGION

PRODUCTION BY REGION

DUC WELLS BY REGION

Region	New-well oil production per rig barrels/day			New-well gas production per rig thousand cubic feet/day		
	January 2022	February 2022	change	January 2022	February 2022	change
Anadarko	762	731	(31)	3,941	3,744	(197)
Appalachia	188	188	-	30,399	30,551	152
Bakken	2,106	2,000	(106)	2,948	2,800	(148)
Eagle Ford	2,304	2,235	(69)	8,348	8,181	(167)
Haynesville	19	19	-	11,971	12,073	102
Niobrara	1,603	1,570	(33)	4,351	4,264	(87)
Permian	1,210	1,195	(15)	2,309	2,281	(28)
Rig-weighted average	1,135	1,116	(19)	6,327	6,183	(144)

Source: Energy Information Administration, *Drilling Productivity Report*