



NATIONAL MINING ASSOCIATION

WEEKLY STATISTICAL SUMMARY

November 4, 2022 Edition
(Data for Week Ending October 29, 2022)

Prepared by
National Mining Association

101 Constitution Avenue NW, Suite 500 East
Washington, DC 20001
(202) 463-2600
www.nma.org



NMA WEEKLY STATISTICAL SUMMARY

Vol. 60, No. 44 | Dated 11/04/22

PRODUCTION, CONSUMPTION & TRADE

	Week Ended			* Cumulative Jan 1 to		
	10/29/22	10/30/21	% Chg	10/29/22	10/29/21	% Chg
EIA Coal Production (000 Tons):						
Week Ended/Year to Date	12,340	11,508	7.2%	497,060	477,155	4.2%
52 Weeks Ended	595,840	567,799	4.9%			
AAR Coal Rail Cars Loaded:	70,984	66,818	6.2%	2,855,076	2,751,646	3.8%
Coal Production	Sep 22/21		% Chg	Jan - Sep 22/21		% Chg
Month Ended - September	51,372	49,760	3.2%	447,814	431,076	3.9%

U.S. Department of Commerce Coal Trade (000 Tons)

	Aug 22/21		% Chg	Jan - Aug 22/21		% Chg
Exports:						
Metallurgical	3,496	4,260	-17.9%	30,859	29,688	3.9%
Steam Bit. *	3,447	3,404	1.3%	25,652	27,116	-5.4%
Lignite	6	6	0.0%	54	51	5.9%
Anthracite	<u>14</u>	<u>27</u>	-48.1%	<u>307</u>	<u>221</u>	38.9%
Total	6,963	7,697	-9.5%	56,872	57,076	-0.4%
Imports:	779	368	111.7%	4,397	3,538	24.3%

	Week Ended			Cumulative Week 1 to		
	10/29/22	10/30/21	% Chg	10/29/22	10/30/21	% Chg
EI Electric Total Output (Mil. Kwh)	68,883	69,278	-0.6%	3,528,439	3,446,673	2.4%
EI Coal Region Output (Mil. Kwh)	59,552	59,874	-0.5%	3,061,972	2,987,217	2.5%
AISI Raw Steel Output (000 Tons)	1,663	1,836	-9.4%	74,707	78,392	-4.7%

EIA AVERAGE COAL & NATURAL GAS SPOT PRICES

Dollars Per Short Ton

Average Coal Spot Prices (\$/Short Ton)	Week Ending			Natural Gas Spot Prices (\$/MMBtu)	
	10/28/22	10/21/22	% Chg	Wed.	10/26/22
Central App, 12,500 Btu, 1.2 SO ₂	\$182.10	\$176.65	3.1%	Henry Hub	5.26
Northern App, 13,000 Btu, < 3.0 SO ₂	185.80	180.25	3.1%	New York	4.44
Illinois Basin, 11,800, 5.0 SO ₂	186.50	186.50	0.0%	Chicago	5.03
Powder River Basin, 8,800 Btu 0.8 SO ₂	17.15	17.45	-1.7%	Cal.Comp.Avg.	6.44
Uinta Basin, 11,700 Btu, 0.8 SO ₂	41.80	41.95	-0.4%		

Coal exports and Imports are "as reported" (not revised); *Steam excludes lignite & anthracite. All data in this report are preliminary and subject to revision. r/ revised.
Sources: EIA; Edison Electric Institute; American Iron & Steel Institute; Association of American Railroads; Dept. of Commerce; S&P Global; NGI's Daily Gas Price Index

EIA Estimated Weekly U.S. Coal Production Overview

Coal-Producing Region & State (thousand short tons)	Week Ended			Year to Date			52 Weeks Ended		
	10/29/2022 (week 44)	10/22/2022 (week 43)	10/30/2021 (week 44)	10/29/2022	10/29/2021	% Change	10/29/2022	10/30/2021	% Change
Alabama	171	154	155	7,597	8,091	-6.1	8,929	9,928	-10.1
Alaska	20	20	21	795	855	-7.1	979	1,040	-5.9
Colorado	322	292	274	11,475	9,488	20.9	13,827	11,246	23.0
Illinois	674	628	617	30,886	31,475	-1.9	36,178	36,826	-1.8
Indiana	440	438	390	18,081	16,073	12.5	21,428	19,154	11.9
Kentucky total	589	578	544	23,562	21,687	8.7	28,231	25,867	9.1
Eastern (KY)	260	254	220	10,073	8,213	22.7	11,961	9,627	24.2
Western (KY)	329	324	324	13,490	13,474	0.1	16,270	16,240	0.2
Louisiana	6	6	6	265	250	6.1	315	306	2.9
Maryland	26	25	23	1,109	1,061	4.6	1,309	1,239	5.6
Mississippi	67	66	55	2,835	2,719	4.3	3,310	2,959	11.9
Missouri	1	1	1	43	39	9.1	48	65	-26.2
Montana	629	601	586	24,795	23,473	5.6	29,826	28,040	6.4
New Mexico	247	245	223	8,716	7,320	19.1	10,632	8,776	21.1
North Dakota	546	514	489	22,087	22,250	-0.7	26,287	26,566	-1.1
Ohio	59	57	58	2,250	2,251	-0.1	2,750	2,780	-1.1
Oklahoma	s	s	s	1	s	72.6	1	s	100.0
Pennsylvania total	756	743	787	32,804	35,562	-7.8	39,562	42,148	-6.1
Anthracite (PA)	55	54	49	2,020	1,688	19.7	2,437	2,063	18.1
Bituminous (PA)	701	689	739	30,784	33,874	-9.1	37,125	40,085	-7.4
Tennessee	.	.	.	s	.	100.0	s	.	.
Texas	392	362	380	14,473	13,935	3.9	17,739	17,166	3.3
Utah	238	236	242	9,574	10,327	-7.3	11,650	12,465	-6.5
Virginia	220	212	215	8,977	9,032	-0.6	10,820	10,810	0.1
West Virginia total	1,697	1,643	1,570	68,964	64,936	6.2	82,443	76,607	7.6
Northern (WV)	955	932	915	38,366	36,492	5.1	46,216	43,448	6.4
Southern (WV)	743	711	656	30,598	28,445	7.6	36,227	33,159	9.3
Wyoming	5,239	5,166	4,870	207,770	196,332	5.8	249,577	233,810	6.7
Appalachian total	3,190	3,089	3,029	131,774	129,146	2.0	157,775	153,139	3.0
Interior total	1,909	1,825	1,772	80,073	77,966	2.7	95,287	92,717	2.8
Western total	7,241	7,075	6,706	285,212	270,043	5.6	342,778	321,943	6.5
East of Mississippi River	4,700	4,545	4,415	197,066	192,886	2.2	234,960	228,319	2.9
West of Mississippi River	7,640	7,443	7,093	299,994	284,268	5.5	360,880	339,480	6.3
Bituminous and lignite	12,285	11,935	11,459	495,040	475,467	4.1	593,403	565,736	4.9
Anthracite	55	54	49	2,020	1,688	19.7	2,437	2,063	18.1
U.S. total	12,340	11,988	11,508	497,060	477,155	4.2	595,840	567,799	4.9
Railroad cars loaded	70,984	68,889	66,818	2,855,076	2,751,646	3.8	3,429,613	3,285,047	4.4

Source: Energy Information Administration



Weekly Electric Output

Volume 90 No. 44

OUTPUT FOR WEEK ENDED - Oct 29, 2022

Nov 02, 2022

The net available amount of electric energy distributed by the Total Electric Utility Industry* for the week ended Saturday, **Oct 29, 2022** was **68,883** gigawatthours (GWh), according to the Edison Electric Institute. This is equivalent to **180** on the weekly electric output index.

WEEKLY ELECTRIC OUTPUT BY GEOGRAPHIC DIVISION

(48 CONTIGUOUS STATES)

	Week Ended October 29		52 Weeks Ended October 29	
	GWh Output	% Increase Over Corresponding Week of 2021	GWh Output	% Increase Over Corresponding Period of 2021
New England	1,954	-2.4	115,873	-0.2
Mid-Atlantic	6,787	-0.8	418,511	0.1
Central Industrial	10,738	-0.8	654,859	0.8
West Central	5,838	0.4	340,218	1.9
Southeast	16,974	-1.2	1,027,709	1.2
South Central	14,104	0.3	828,887	6.6
Rocky Mountain	5,111	-0.7	294,844	0.6
Pacific Northwest	2,625	0.0	159,776	1.1
Pacific Southwest	4,752	-0.6	273,723	2.5
Total United States	68,883	-0.6	4,114,400	2.1

WEEKLY ELECTRIC OUTPUT IN PREVIOUS WEEKS--GWh

Week Ended	2022	Week Ended	2021	% Inc. (22/21)	52 Weeks Ended	2022	% Inc. (22/21)
Oct 08	69,706	Oct 09	75,195	-7.3	Oct 08	4,116,091	2.2
Oct 15	70,244	Oct 16	73,017	-3.8	Oct 15	4,113,318	2.0
Oct 22	69,780	Oct 23	68,303	2.2	Oct 22	4,114,795	2.1
Oct 29	68,883	Oct 30	69,278	-0.6	Oct 29	4,114,400	2.1
Oct 29	3,528,439	Oct 30	3,446,673	2.4	YEAR TO DATE, FIRST 44 WEEKS		

WEEKLY ELECTRIC OUTPUT INDEX--TOTAL U.S.*

SEASONALLY ADJUSTED 1982 = 100

Week Ended	2022	Week Ended	2021	Week Ended	2020
Oct 08	176	Oct 09	187	Oct 10	171
Oct 15	181	Oct 16	185	Oct 17	174
Oct 22	183	Oct 23	175	Oct 24	177
Oct 29	180	Oct 30	177	Oct 31	175

* Excludes Alaska and Hawaii.

+ Includes investor-owned companies, cooperatives and government-owned utilities.

Copyright © 2022 Edison Electric Institute. All rights reserved.

**EI WEEKLY ELECTRIC OUTPUT BY GEOGRAPHIC DIVISION
(48 CONTIGUOUS STATES)**

	Week Ended			NMA CUMULATIVE JANUARY WEEK ONE TO			52 Weeks Ended		
	29-Oct 2022 GWh Output	30-Oct 2021 GWh Output	% Increase Over Corresponding Week	29-Oct 2022 GWh Output	30-Oct 2021 GWh Output	% Increase Over Corresponding Week	29-Oct 2022 GWh Output	30-Oct 2021 GWh Output	% Increase Over Corresponding Week
New England	1,954	2,001	-2.3%	98,421	98,479	-0.1%	115,873	116,085	-0.2%
Mid-Atlantic	6,787	6,845	-0.8%	357,909	357,696	0.1%	418,511	418,214	0.1%
Central Industrial	10,738	10,829	-0.8%	559,123	555,304	0.7%	654,859	649,983	0.8%
West Central	5,838	5,815	0.4%	290,684	285,602	1.8%	340,218	333,885	1.9%
Southeast	16,974	17,173	-1.2%	881,322	868,452	1.5%	1,027,709	1,015,859	1.2%
South Central	14,104	14,065	0.3%	721,274	670,400	7.6%	828,887	777,448	6.6%
Rocky Mountain	5,111	5,147	-0.7%	251,660	249,763	0.8%	294,844	293,150	0.6%
Pacific Northwest	2,625	2,624	0.0%	133,521	131,921	1.2%	159,776	158,114	1.1%
Pacific Southwest	4,752	4,779	-0.6%	234,524	229,061	2.4%	273,723	267,150	2.5%
Total United States ^{1/}	68,883	69,278	-0.6%	3,528,438	3,446,678	2.4%	4,114,400	4,029,888	2.1%
Coal Regions Only ^{2/}	59,552	59,874	-0.5%	3,061,972	2,987,217	2.5%	3,565,028	3,488,539	2.2%

Notes: EEI output data are an estimate of electricity load made available for distribution derived as weekly net generation + purchases from non-utilities + net imports - exports - sales for resale. It is not meant to be a measure of electricity generation for the U.S. EEI survey data represent the majority of national distribution (large utilities, large government power projects, some independent and large municipal power projects). The remaining segment of the industry (smaller producers) is estimated. Non-utility generation is captured via direct sales to utilities.

^{1/} Excludes Alaska and Hawaii

^{2/} Excludes New England and Pacific regions

SOURCE: Edison Electric Institute (EEI), *Weekly Electric Output Report*.

AMERICAN IRON AND STEEL INSTITUTE
 25 Massachusetts Avenue, NW, Suite 800
 Washington, D.C. 20001

October 31, 2022

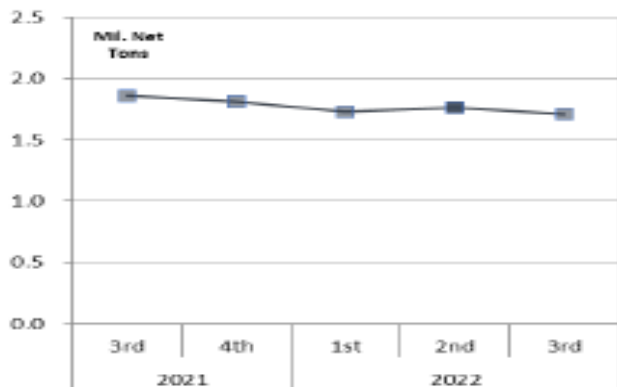
ESTIMATED WEEKLY RAW STEEL * PRODUCTION

Period	Thousand Net Tons	Percent Change from Previous Period	Percent Capacity Utilization**	Production by District		
				Week Ending Oct 29	Week Ending Oct 22	
<u>Week Ending</u>				North East	144	142
				Great Lakes	556	553
October 29, 2022	1,663	-0.4	74.5	Midwest	176	179
October 29, 2021	1,836	-9.4	83.2	Southern	721	726
October 22, 2022	1,669	-1.1	74.8	Western	66	69
				Total	1,663	1,669
<u>Year-to-Date +</u>						
October 29, 2022	74,707	-4.7	79.0			
October 29, 2021	78,392	-	81.2			

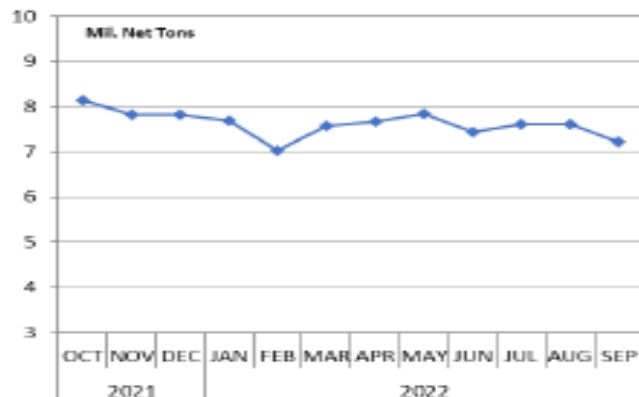
*Raw steel production tonnage included in this report is estimated based on a sampling of steel producers (50% of domestic producers). Therefore, this report should be used primarily to assess production trends. The AISI production report "AIS 7," produced monthly and available by subscription, provides a more accurate summary of steel production based on data supplied by companies representing approximately 75% of U.S. production capacity plus includes revisions for previous months.

NOTE: Rate of capability utilization for June 2022 was approximately 79.6%, 7.45 million net tons. Given the large number of changes to steelmaking capability and the evolving market, AISI is updating the capacity statistics.

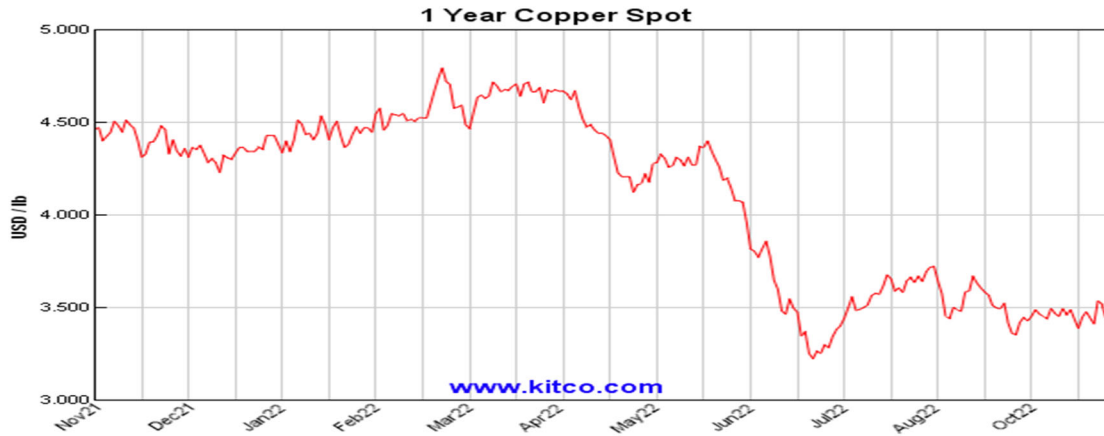
Average Weekly Raw Steel Production



Monthly Raw Steel Production



*Steel in the first solid state after melting suitable for further processing or sale, including ingots, steel for castings and strand or pressure cast blooms, slabs or other product forms. ** Based on tonnage capability to produce raw steel for a sustained full order book.



Source: Kitco website - www.kitco.com/connecting.html

U.S. Rail Traffic¹
Week 43, 2022 – Ended October 29, 2022

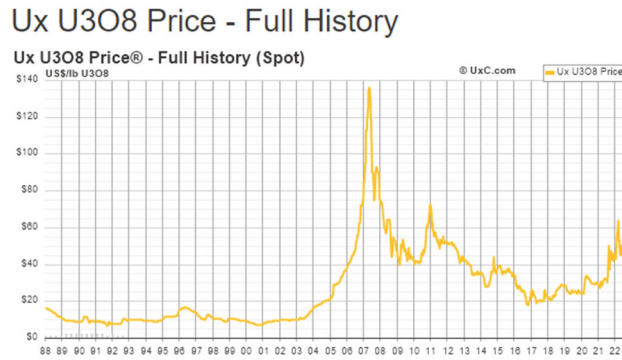
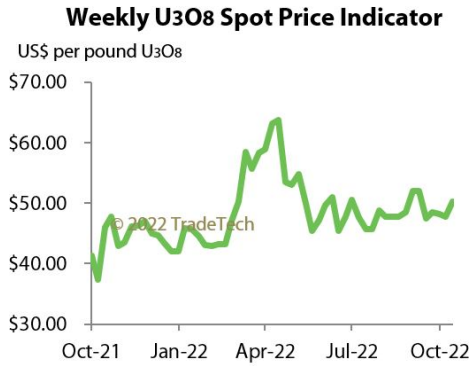
	This Week		Year-To-Date		
	Cars	vs 2021	Cumulative	Avg/wk ²	vs 2021
Total Carloads	244,425	2.6%	9,971,376	231,892	0.1%
Chemicals	31,092	-6.5%	1,425,191	33,144	2.4%
Coal	70,984	6.0%	2,847,835	66,229	3.7%
Farm Products excl. Grain, and Food	16,857	-1.9%	701,196	16,307	3.4%
Forest Products	8,908	-8.3%	417,904	9,719	-3.3%
Grain	25,653	3.6%	950,475	22,104	-4.2%
Metallic Ores and Metals	22,108	-8.0%	903,476	21,011	-7.6%
Motor Vehicles and Parts	15,002	18.7%	570,962	13,278	2.6%
Nonmetallic Minerals	34,438	11.8%	1,358,408	31,591	4.2%
Petroleum and Petroleum Products	10,122	6.0%	411,227	9,563	-9.1%
Other	9,261	-2.1%	384,702	8,947	-9.8%
Total Intermodal Units	270,032	-0.7%	11,321,976	263,302	-4.8%
Total Traffic	514,457	0.8%	21,293,352	495,194	-2.5%

¹ Excludes U.S. operations of Canadian Pacific, CN and GMXT.

² Average per week figures may not sum to totals as a result of independent rounding.

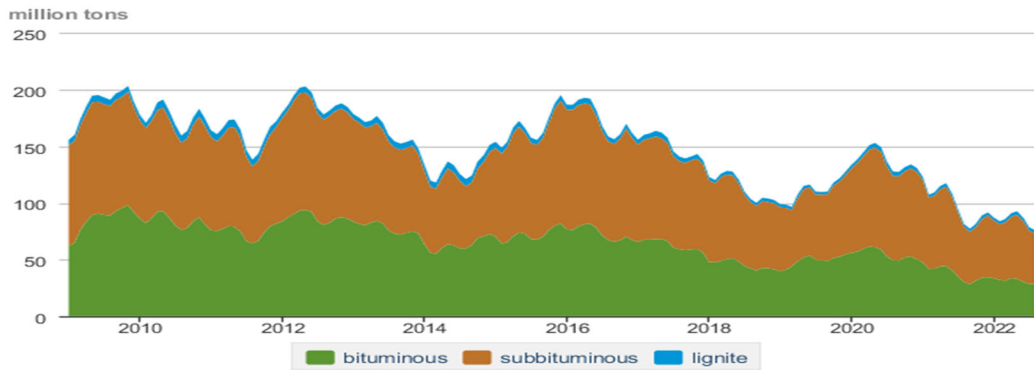
Source: AAR website - <https://www.aar.org/Pages/NEWS-and-EVENTS.aspx>

Trade Tech's and UX's Uranium Price Indicators



Sources: Trade Tech, Uranium Info Website – www.uranium.info ; Source: Ux Consulting Co., LLC – <http://www.uxc.com>

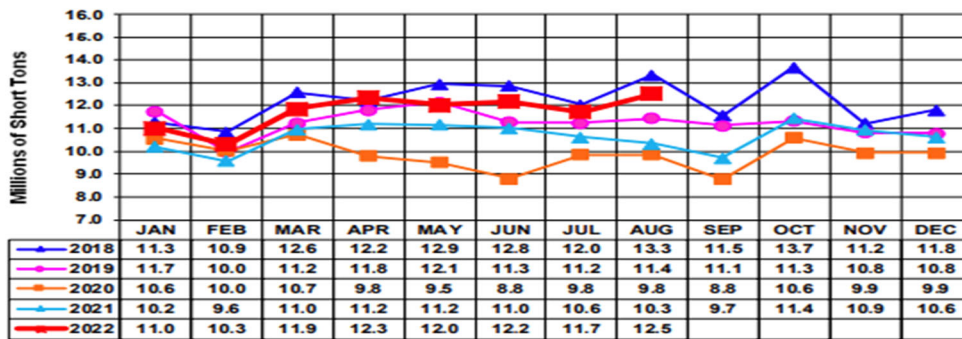
Coal stocks by type, January 2009 - August 2022



Source: U.S. Energy Information Administration

Source: Energy Information Administration, Electric Monthly Update

Coal and Coke Monthly Indicator for Internal U.S. Waterways



For the Internal U.S. Waterway Monthly Indicators, estimates for the most recent month are based on lock performance management data. The estimates will be superseded by actual data as it becomes available.

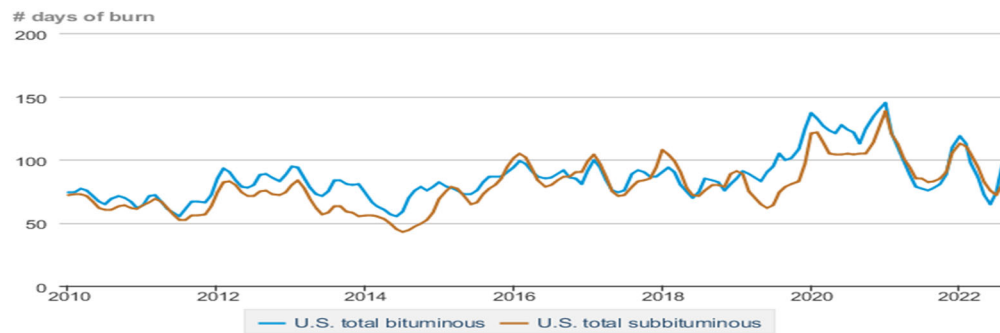
Source: Waterborne Commerce Statistics Center

Average weekly coal commodity spot prices dollars per short ton

	Week ending					Week ago
	09/30/22	10/07/22	10/14/22	10/21/22	10/28/22	change
Central Appalachia 12,500 Btu, 1.2 SO ₂	\$204.95	\$204.95	\$176.65	\$176.65	\$182.10	\$5.45
Northern Appalachia 13,000 Btu, < 3.0 SO ₂	\$187.55	\$187.55	\$180.25	\$180.25	\$185.80	\$5.55
Illinois Basin 11,800 Btu, 5.0 SO ₂	\$196.75	\$196.75	\$186.50	\$186.50	\$186.50	\$0.00
Powder River Basin 8,800 Btu, 0.8 SO ₂	\$16.25	\$16.25	\$17.45	\$17.45	\$17.15	\$-0.30
Uinta Basin 11,700 Btu, 0.8 SO ₂	\$42.40	\$42.40	\$41.95	\$41.95	\$41.80	\$-0.15

Source: Energy Information Administration (with permission from S&P Global), *Coal Market Report*

Days of burn by non-lignite coal rank, January 2010 - August 2022



Source: U.S. Energy Information Administration

Source: Energy Information Administration, *Electricity Monthly Update Report*

Temperature – heating & cooling degree days (week ending Oct 20)

Region	HDDs			CDDs		
	Current total	Deviation from normal	Deviation from last year	Current total	Deviation from normal	Deviation from last year
New England	89	-16	41	0	0	-2
Middle Atlantic	101	8	61	0	-1	-7
E N Central	150	52	94	0	-1	-4
W N Central	158	61	82	0	-2	0
South Atlantic	73	21	43	18	-7	-17
E S Central	89	39	53	1	-9	-16
W S Central	39	20	19	24	-3	-9
Mountain	70	-23	-41	12	1	7
Pacific	12	-25	-40	13	6	12
United States	90	18	39	9	-2	-5

Data source: National Oceanic and Atmospheric Administration
Note: HDDs=heating degree days; CDDs=cooling degree days

Source: Energy Information Administration, *Natural Gas Weekly Update*.

USGS Production of Selected Mineral Commodities	2022 Year to Date - 2nd Quarter	2021 Year to Date - 2nd Quarter	Percent Change
Aluminum, secondary (000 Mt.)	434.0	418.0	4%
Cement (Mil. Mt.)	44.1	42.6	4%
Copper (000 Mt.)	621.0	595.0	4%
Gold (Mt.)	80.8	89.1	-9%
Gypsum (Mil. Mt.)	9.1	9.6	-5%
Iron Ore (Mil. Mt.)	22.6	26.0	-13%
Lead (000 Mt.)	142.0	146.0	-3%
Molybdenum (000 Mt.)	20.5	22.4	-8%
Palladium (Mt.)	5.9	7.2	-18%
Phosphate rock (Mil. Mt.)	10.0	11.0	-9%
Platinum (Mt.)	1.7	2.1	-19%
Sand & gravel, construction (Mil. Mt.)	459.0	448.0	2%
Silver (Mt.)	504.0	516.0	-2%
Soda ash (Mil. Mt.)	5.5	5.6	-2%
Stone, crushed (Mil. Mt.)	705.0	688.0	2%
Zinc (000 Mt.)	369.0	354.0	4%

Source: U.S. Geological Survey, Mineral Industry Surveys. Percent change based on USGS rounded numbers. 2022 data are preliminary estimates. W - withheld, N/A - not available

Natural gas spot prices (Henry Hub)
dollars per million British thermal units



Data source: Natural Gas Intelligence

Source: Energy Information Administration, *Natural Gas Weekly*.

Coal stocks and average number of days of burn for non-lignite coal by region (electric power sector)

Zone	Coal	August 2022		August 2021		% Change of Stocks	July 2022		% Change of Stocks
		Stocks (1000 tons)	Days of Burn	Stocks (1000 tons)	Days of Burn		Stocks (1000 tons)	Days of Burn	
Northeast	Bituminous	1,607	362	1,634	242	-1.6%	1,672	365	-3.8%
	Subbituminous								
South	Bituminous	11,197	88	11,024	73	1.6%	10,833	56	3.4%
	Subbituminous	3,310	47	3,009	38	10.0%	3,254	38	1.7%
Midwest	Bituminous	6,528	76	5,951	61	9.7%	6,748	65	-3.3%
	Subbituminous	14,452	96	18,048	102	-19.9%	15,941	93	-9.3%
West	Bituminous	3,186	165	2,156	109	47.7%	3,221	159	-1.1%
	Subbituminous	14,614	79	16,520	77	-11.5%	15,571	70	-6.1%
U.S. Total	Bituminous	22,517	96	20,766	76	8.4%	22,473	74	0.2%
	Subbituminous	32,375	81	37,576	82	-13.8%	34,766	72	-6.9%

Source: Energy Information Administration, *Electricity Monthly Update*

EIA Working Natural Gas Underground Storage

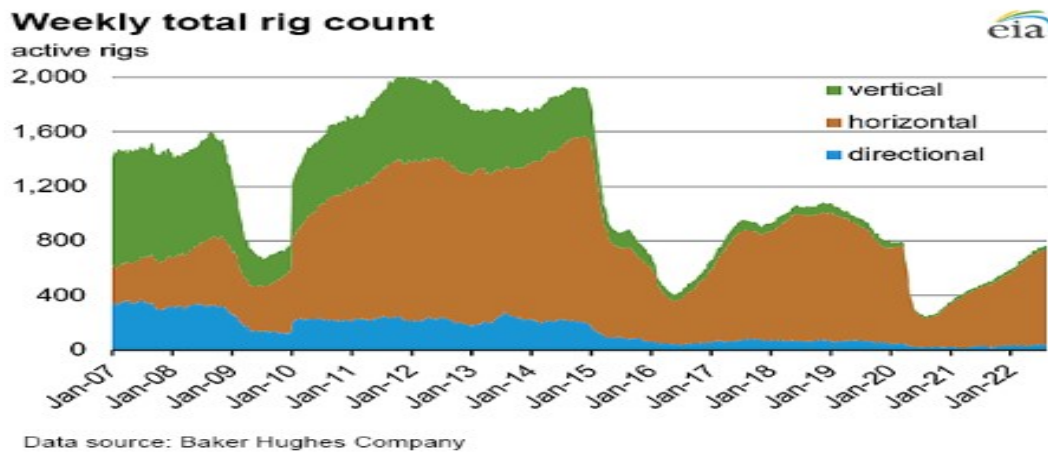
Working gas in underground storage

Region	Stocks billion cubic feet (Bcf)		
	2022-10-21	2022-10-14	change
East	825	812	13
Midwest	1,007	987	20
Mountain	199	195	4
Pacific	248	249	-1
South Central	1,116	1,099	17
Total	3,394	3,342	52

Data source: U.S. Energy Information Administration Form EIA-912, *Weekly Underground Natural Gas Storage Report*

Source: Energy Information Administration, *Natural Gas Weekly Update*

EIA Natural Gas Rig Count



Source: Energy Information Administration, *Natural Gas Weekly Update*

EIA Oil and Natural Gas Rig Productivity

Region	NEW-WELL PRODUCTION PER RIG BY REGION			PRODUCTION BY REGION			DUC WELLS BY REGION		
	New-well oil production per rig barrels/day			New-well gas production per rig thousand cubic feet/day					
	October 2022	November 2022	change	October 2022	November 2022	change			
Anadarko	692	695	3	3,771	3,786	15			
Appalachia	191	191	-	27,869	27,874	5			
Bakken	1,701	1,704	3	2,492	2,506	14			
Eagle Ford	1,587	1,571	(16)	6,258	6,133	(125)			
Haynesville	20	20	-	10,835	10,781	(54)			
Niobrara	1,398	1,391	(7)	3,599	3,545	(54)			
Permian	1,078	1,061	(17)	2,116	2,093	(23)			
Rig-weighted average	980	966	(14)	5,570	5,564	(6)			

Source: Energy Information Administration, *Drilling Productivity Report*

USGS Cobalt – U.S. Trade, Reported Stocks and Listed Prices

Cobalt - March 2022	Mar-22	Year to Date
U.S. Imports for Consumption - Metals (mt)	648	1,840
U.S. Exports of Cobalt Materials - Cobalt Content (mt)	597	1,340
Reported Stocks of Cobalt Metal (mt)	U.S. Govt	LME
	302	248
Listed Prices by Type (\$/lb): US Spot & LME Cash Avg.	38.17	36.47

Source: USGS, Mineral Industry Survey, Cobalt in March 2022, May 2022

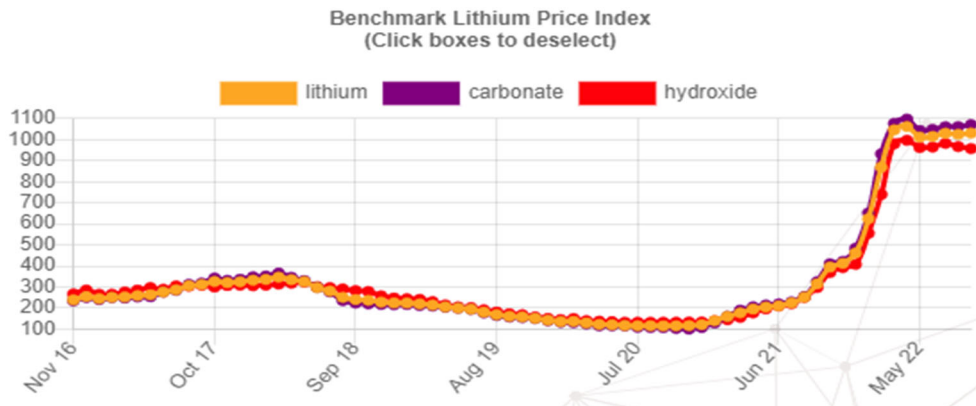
Cobalt and Lithium Prices

Cobalt Prices (US\$/pound):



Source: Dailymetalprice.com - <https://www.dailymetalprice.com/metalpricecharts.php?c=co&u=lb&d=0>

Lithium Price Index:



Source: Benchmark Mineral Intelligence - <https://www.benchmarkminerals.com/lithium-prices/>