



NATIONAL MINING ASSOCIATION

WEEKLY STATISTICAL SUMMARY

August 11, 2023 Edition
(Data for Week Ending August 5, 2023)

Prepared by
National Mining Association

101 Constitution Avenue NW, Suite 500 East
Washington, DC 20001
(202) 463-2600
www.nma.org



NMA WEEKLY STATISTICAL SUMMARY

Vol. 61, No. 31 | Dated 08/11/23

PRODUCTION, CONSUMPTION & TRADE

	Week Ended			* Cumulative Jan 1 to		
	08/05/23	07/30/22	% Chg	08/05/23	08/05/22	% Chg
EIA Coal Production (000 Tons):						
Week Ended/Year to Date	11,160	11,811	-5.5%	352,520	351,718	0.2%
52 Weeks Ended	604,813	588,016	2.9%			
<i>Note: the year 2022 has an extra Saturday</i>						
AAR Coal Rail Cars Loaded:	64,574	68,617	-5.9%	2,020,105	2,010,048	0.5%
Coal Production	Jul 23/22		% Chg	Jan - Jul 23/22		% Chg
Month Ended - July	49,065	49,301	-0.5%	344,373	343,223	0.3%

U.S. Department of Commerce Coal Trade (000 Tons)

	June 23/22		% Chg	Jan - June 23/22		% Chg
Coal Exports:						
Metallurgical	3,923	4,551	-13.8%	25,014	23,541	6.3%
Steam Bit. *	4,041	2,967	36.2%	23,288	19,440	19.8%
Lignite	9	7	28.6%	52	42	23.8%
Anthracite	<u>36</u>	<u>68</u>	-47.1%	<u>400</u>	<u>191</u>	109.4%
Total	8,009	7,593	5.5%	48,754	43,214	12.8%
Coal Imports:	282	627	-55.0%	2,034	2,958	-31.2%

	Week Ended			Cumulative Week 1 to		
	08/05/23	08/06/22	% Chg	08/05/23	08/06/22	% Chg
EEl Electric Total Output (Mil. Kwh)	95,336	96,094	-0.8%	2,429,747	2,510,961	-3.2%
EEl Coal Region Output (Mil. Kwh)	83,968	83,577	0.5%	2,110,109	2,186,184	-3.5%
AISI Raw Steel Output (000 Tons)	1,727	1,720	0.4%	52,870	54,082	-2.2%

EIA AVERAGE COAL & NATURAL GAS SPOT PRICES

Dollars Per Short Ton

Average Coal Spot Prices (\$/Short Ton)	Week Ending			Natural Gas Spot Prices (\$/MMBtu)	
	08/04/23	07/28/23	% Chg	Wed.	8/02/23
Central App, 12,500 Btu, 1.2 SO ₂	\$66.25	\$62.25	6.4%	Henry Hub	2.43
Northern App, 13,000 Btu, < 3.0 SO ₂	52.50	52.60	-0.2%	New York	1.16
Illinois Basin, 11,800, 5.0 SO ₂	50.00	50.00	0.0%	Chicago	2.22
Powder River Basin, 8,800 Btu 0.8 SO ₂	14.30	14.30	0.0%	Cal.Comp.Avg.	4.78
Uinta Basin, 11,700 Btu, 0.8 SO ₂	32.50	32.50	0.0%		

Coal exports and Imports are "as reported" (not revised); *Steam excludes lignite & anthracite. All data in this report are preliminary and subject to revision. r/ revised.

Sources: EIA; Edison Electric Institute; American Iron & Steel Institute; Association of American Railroads; Dept. of Commerce; S&P Global; NGI's Daily Gas Price Index

EIA Estimated Weekly U.S. Coal Production Overview									
Coal-Producing Region & State (thousand short tons)	Week Ended			Year to Date			52 Weeks Ended		
	8/5/2023 (week 31)	7/29/2023 (week 30)	7/30/2022 (week 31)	8/5/2023	8/5/2022	% Change	8/5/2023	7/30/2022	% Change
Alabama	224	235	216	6,786	6,130	10.7	11,297	9,433	19.8
Alaska	20	20	18	611	572	6.7	1,068	982	8.8
Colorado	225	244	264	7,281	7,669	-5.1	12,625	13,213	-4.5
Illinois	727	798	704	24,240	22,860	6.0	39,522	35,548	11.2
Indiana	527	546	462	15,984	13,505	18.4	26,438	21,444	23.3
Kentucky total	554	580	544	17,708	16,898	4.8	29,741	27,639	7.6
Eastern (KY)	248	259	230	7,699	7,064	9.0	12,874	11,364	13.3
Western (KY)	306	321	314	10,009	9,834	1.8	16,867	16,275	3.6
Louisiana	6	6	6	184	175	5.2	321	316	1.6
Maryland	28	29	28	821	847	-3.1	1,455	1,341	8.5
Mississippi	62	68	70	1,821	2,032	-10.4	3,216	3,253	-1.1
Missouri	2	2	1	66	41	60.0	99	47	110.6
Montana	492	532	568	16,329	17,083	-4.4	27,954	29,315	-4.6
New Mexico	197	203	227	5,833	6,400	-8.8	10,173	10,413	-2.3
North Dakota	501	517	569	15,708	15,981	-1.7	26,932	26,596	1.3
Ohio	36	38	44	1,226	1,561	-21.5	2,193	2,755	-20.4
Oklahoma	s	s	s	1	1	83.9	2	1	100.0
Pennsylvania total	753	777	716	24,034	23,725	1.3	40,789	39,336	3.7
Anthracite (PA)	51	55	48	1,658	1,427	16.2	2,757	2,347	17.5
Bituminous (PA)	702	723	669	22,376	22,298	0.3	38,032	36,989	2.8
Tennessee	s	s	.	1	s	41.9	1	s	100.0
Texas	306	318	334	9,208	9,894	-6.9	16,677	17,690	-5.7
Utah	152	168	224	5,109	6,734	-24.1	9,285	11,730	-20.8
Virginia	220	229	225	6,779	6,286	7.8	11,669	10,764	8.4
West Virginia total	1,606	1,710	1,617	51,996	49,888	4.2	87,118	81,088	7.4
Northern (WV)	903	955	930	28,350	27,824	1.9	48,285	45,616	5.9
Southern (WV)	703	756	687	23,646	22,064	7.2	38,833	35,472	9.5
Wyoming	4,524	4,753	4,973	140,794	143,437	-1.8	246,237	245,112	0.5
Appalachian total	3,114	3,277	3,076	99,341	95,501	4.0	167,396	156,082	7.2
Interior total	1,935	2,059	1,892	61,514	58,341	5.4	103,142	94,573	9.1
Western total	6,110	6,438	6,843	191,665	197,875	-3.1	334,274	337,361	-0.9
East of Mississippi River	4,736	5,010	4,627	151,395	143,732	5.3	253,439	232,602	9.0
West of Mississippi River	6,424	6,764	7,184	201,124	207,986	-3.3	351,374	355,414	-1.1
Bituminous and lignite	11,109	11,719	11,764	350,862	350,291	0.2	602,056	585,669	2.8
Anthracite	51	55	48	1,658	1,427	16.2	2,757	2,347	17.5
U.S. total	11,160	11,774	11,811	352,520	351,718	0.2	604,813	588,016	2.9
Railroad cars loaded	64,574	67,915	68,617	2,020,105	2,010,048	0.5	3,492,769	3,392,395	3.0

Source: Energy Information Administration



Weekly Electric Output

Volume 91 No. 31

OUTPUT FOR WEEK ENDED - Aug 05, 2023

Aug 09, 2023

The net available amount of electric energy distributed by the Total Electric Utility Industry* for the week ended Saturday, **Aug 05, 2023** was **95,336** gigawatthours (GWh), according to the Edison Electric Institute. This is equivalent to **200** on the weekly electric output index.

WEEKLY ELECTRIC OUTPUT BY GEOGRAPHIC DIVISION

(48 CONTIGUOUS STATES)

	Week Ended August 05		52 Weeks Ended August 05	
	GWh Output	% Increase Over Corresponding Week of 2022	GWh Output	% Increase Over Corresponding Period of 2022
New England	2,189	-25.6	111,824	-4.5
Mid-Atlantic	9,118	-10.8	404,998	-4.0
Central Industrial	14,813	-1.8	637,602	-3.7
West Central	7,626	-1.8	337,589	-1.3
Southeast	23,533	-0.8	1,003,311	-3.2
South Central	22,153	10.4	838,850	1.4
Rocky Mountain	6,725	0.2	293,733	-0.1
Pacific Northwest	2,911	-3.6	161,536	1.0
Pacific Southwest	6,268	-4.3	272,244	1.5
Total United States	95,336	-0.8	4,061,687	-1.6

WEEKLY ELECTRIC OUTPUT IN PREVIOUS WEEKS--GWh

Week Ended	2023	Week Ended	2022	% Inc. (23/22)	52 Weeks Ended	2023	% Inc. (23/22)
Jul 15	94,718	Jul 16	92,684	2.2	Jul 15	4,062,708	-1.1
Jul 22	95,454	Jul 23	99,445	-4.0	Jul 22	4,058,716	-1.5
Jul 29	97,452	Jul 30	93,723	4.0	Jul 29	4,062,445	-1.4
Aug 05	95,336	Aug 06	96,094	-0.8	Aug 05	4,061,687	-1.6
Aug 05	2,429,747	Aug 06	2,510,961	-3.2	YEAR TO DATE, FIRST 31 WEEKS		

WEEKLY ELECTRIC OUTPUT INDEX--TOTAL U.S.*

SEASONALLY ADJUSTED 1982 = 100

Week Ended	2023	Week Ended	2022	Week Ended	2021
Jul 15	197	Jul 16	177	Jul 17	169
Jul 22	195	Jul 23	191	Jul 24	171
Jul 29	203	Jul 30	182	Jul 31	181
Aug 05	200	Aug 06	190	Aug 07	169

* Excludes Alaska and Hawaii.

+ Includes investor-owned companies, cooperatives and government-owned utilities.

Copyright © 2023 Edison Electric Institute. All rights reserved.

EEI WEEKLY ELECTRIC OUTPUT BY GEOGRAPHIC DIVISION (48 CONTIGUOUS STATES)

	Week Ended			NMA CUMULATIVE JANUARY WEEK ONE TO			52 Weeks Ended		
	5-Aug 2023 GWh Output	6-Aug 2022 GWh Output	% Increase Over Corresponding Week	5-Aug 2023 GWh Output	6-Aug 2022 GWh Output	% Increase Over Corresponding Week	5-Aug 2023 GWh Output	6-Aug 2022 GWh Output	% Increase Over Corresponding Week
New England	2,189	2,944	-25.6%	65,993	69,949	-5.7%	111,824	117,046	-4.5%
Mid-Atlantic	9,118	10,223	-10.8%	239,964	254,429	-5.7%	404,998	421,789	-4.0%
Central Industrial	14,813	15,090	-1.8%	385,377	405,399	-4.9%	637,602	662,355	-3.7%
West Central	7,626	7,764	-1.8%	201,924	206,171	-2.1%	337,589	341,893	-1.3%
Southeast	23,533	23,732	-0.8%	601,015	634,256	-5.2%	1,003,311	1,036,681	-3.2%
South Central	22,153	20,058	10.4%	509,417	511,105	-0.3%	838,850	827,242	1.4%
Rocky Mountain	6,725	6,710	0.2%	172,413	174,824	-1.4%	293,733	294,030	-0.1%
Pacific Northwest	2,911	3,020	-3.6%	97,597	97,422	0.2%	161,536	159,870	1.0%
Pacific Southwest	6,268	6,553	-4.3%	156,048	157,406	-0.9%	272,244	268,274	1.5%
Total United States ^{1/}	<u>95,336</u>	<u>96,094</u>	-0.8%	<u>2,429,747</u>	<u>2,510,961</u>	-3.2%	<u>4,061,687</u>	<u>4,129,180</u>	-1.6%
Coal Regions Only ^{2/}	83,968	83,577	0.5%	2,110,109	2,186,184	-3.5%	3,516,083	3,583,990	-1.9%

Notes: EEI output data are an estimate of electricity load made available for distribution derived as weekly net generation + purchases from non-utilities + net imports - exports - sales for resale. It is not meant to be a measure of electricity generation for the U.S. EEI survey data represent the majority of national distribution (large utilities, large government power projects, some independent and large municipal power projects). The remaining segment of the industry (smaller producers) is estimated. Non-utility generation is captured via direct sales to utilities. **Note: the year 2022 has an extra Saturday.**

^{1/} Excludes Alaska and Hawaii

^{2/} Excludes New England and Pacific regions

SOURCE: Edison Electric Institute (EEI), *Weekly Electric Output Report*.

AMERICAN IRON AND STEEL INSTITUTE
 25 Massachusetts Avenue, NW, Suite 800
 Washington, D.C. 20001

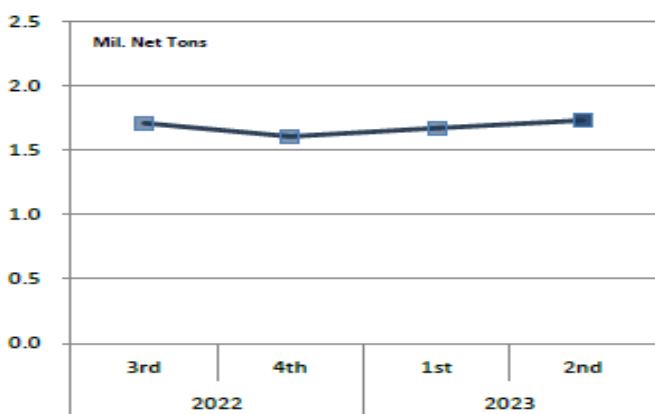
August 7, 2023

ESTIMATED WEEKLY RAW STEEL * PRODUCTION

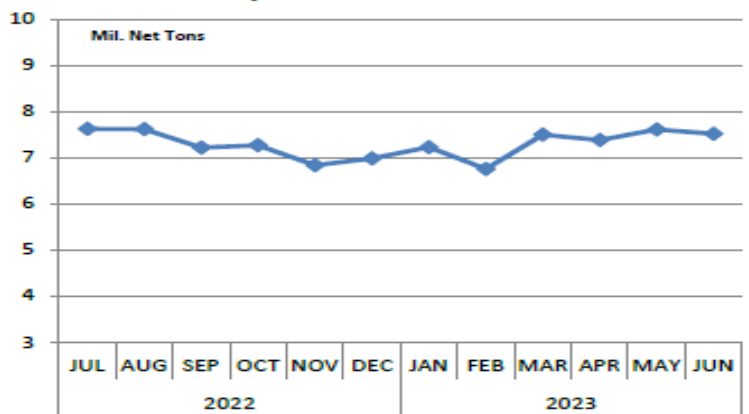
<u>Period</u>	<u>Thousand Net Tons</u>	<u>Percent Change from Previous Period</u>	<u>Percent Capability Utilization**</u>	<u>Production by District</u>		
				<u>Week Ending August 5</u>	<u>Week Ending July 29</u>	
<u>Week Ending</u>				North East	133	134
				Great Lakes	549	552
August 5, 2023	1,727	-1.3	75.9	Midwest	225	219
August 5, 2022	1,720	0.4	78.0	Southern	752	782
July 29, 2023	1,749	0.5	76.9	Western	68	62
				Total	1,727	1,749
<u>Year-to-Date +</u>						
August 5, 2023	52,870	-2.2	75.9			
August 5, 2022	54,082	-	79.9			

*Raw steel production tonnage included in this report is estimated based on a sampling of steel producers (50% of domestic producers). Therefore, this report should be used primarily to assess production trends. The AISI production report "AIS 7," produced monthly and available by subscription, provides a more accurate summary of steel production based on data supplied by companies representing approximately 75% of U.S. production capacity plus includes revisions for previous months.

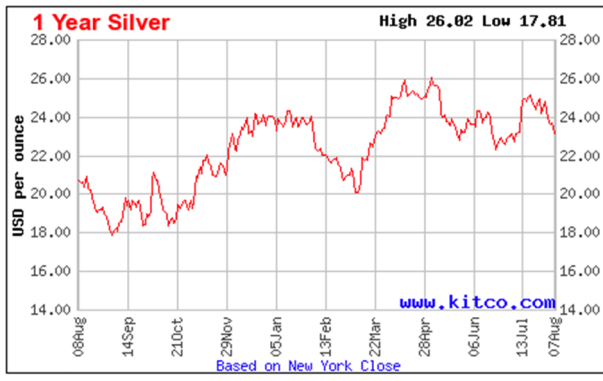
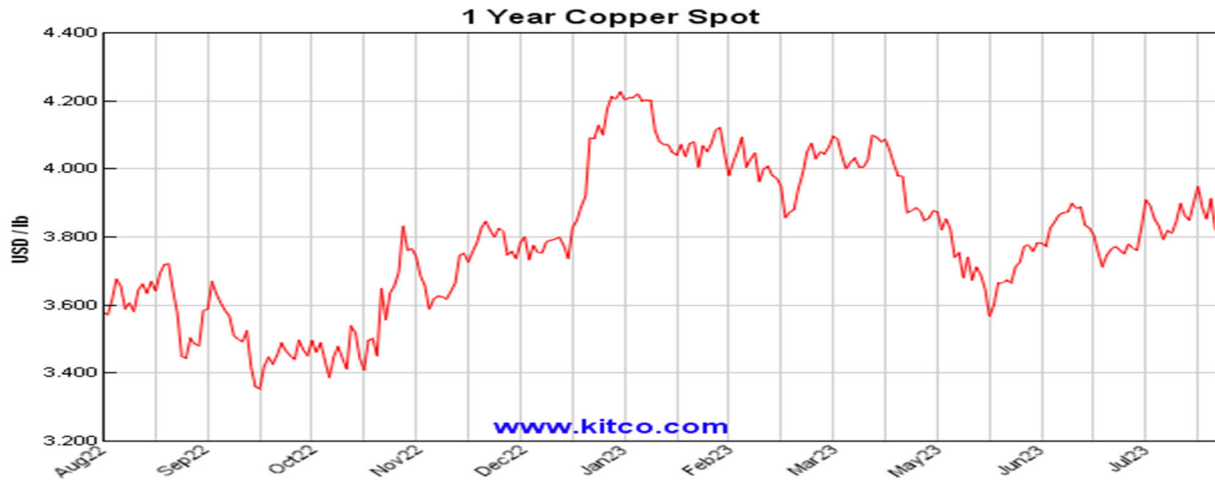
Average Weekly Raw Steel Production



Monthly Raw Steel Production



*Steel in the first solid state after melting suitable for further processing or sale, including ingots, steel for castings and strand or pressure cast blooms, slabs or other product forms. ** Based on tonnage capability to produce raw steel for a sustained full order book.



Source: Kitco website - www.kitco.com/connecting.html

U.S. Rail Traffic¹
Week 31, 2023 – Ended August 5, 2023

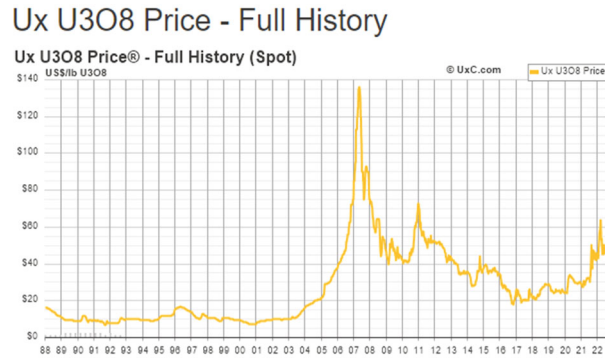
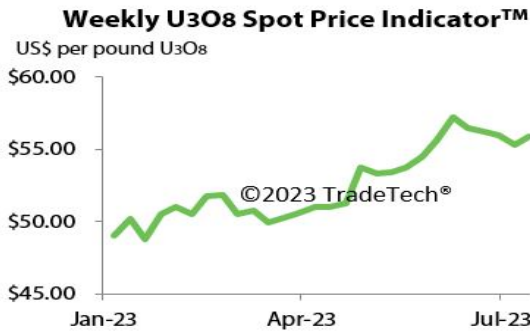
	This Week		Year-To-Date		
	Cars	vs 2022	Cumulative	Avg/wk ²	vs 2022
Total Carloads	222,199	-1.0%	6,941,594	223,922	0.4%
Chemicals	30,264	-2.6%	964,646	31,118	-3.7%
Coal	64,574	-1.9%	2,020,086	65,164	0.4%
Farm Products excl. Grain, and Food	15,849	3.9%	500,860	16,157	1.2%
Forest Products	7,784	-8.4%	253,017	8,162	-7.0%
Grain	15,623	-19.0%	575,290	18,558	-11.8%
Metallic Ores and Metals	22,050	5.4%	639,935	20,643	5.0%
Motor Vehicles and Parts	14,991	13.1%	454,511	14,662	13.4%
Nonmetallic Minerals	33,368	-1.7%	980,321	31,623	4.4%
Petroleum and Petroleum Products	9,388	6.4%	288,701	9,313	9.2%
Other	8,308	10.9%	264,227	8,523	-2.4%
Total Intermodal Units	249,739	-5.2%	7,330,887	236,480	-9.5%
Total Traffic	471,938	-3.2%	14,272,481	460,403	-5.0%

¹ Excludes U.S. operations of CPKC, CN and GMXT.

² Average per week figures may not sum to totals as a result of independent rounding.

Source: AAR website - <https://www.aar.org/Pages/NEWS-and-EVENTS.aspx>

Trade Tech's and UX's Uranium Price Indicators



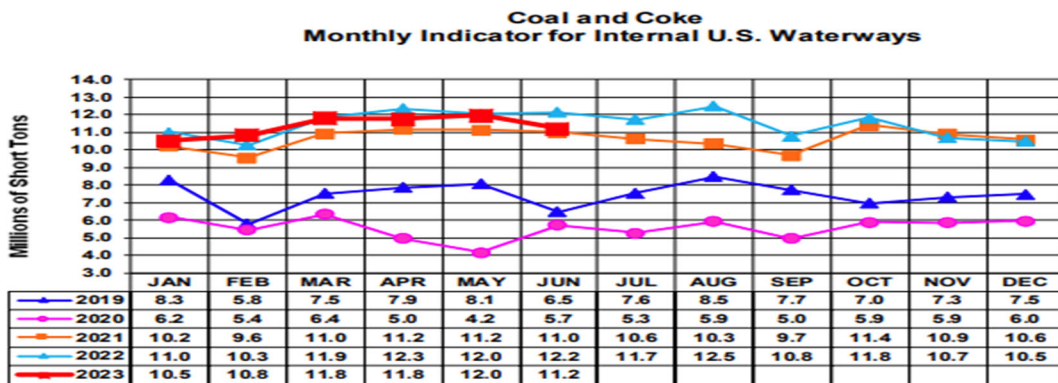
Sources: Trade Tech, Uranium Info Website – www.uranium.info ; Source: Ux Consulting Co., LLC – <http://www.uxc.com>

Coal stocks and average number of days of burn for non-lignite coal by region (electric power sector)

Zone	Coal	May 2023		May 2022		% Change of Stocks	April 2023		% Change of Stocks
		Stocks (1000 tons)	Days of Burn	Stocks (1000 tons)	Days of Burn		Stocks (1000 tons)	Days of Burn	
Northeast	Bituminous	2,850	365	1,384	270	105.9%	2,823	365	1.0%
	Subbituminous								
South	Bituminous	20,896	111	12,627	66	65.5%	19,487	110	7.2%
	Subbituminous	5,969	80	3,503	45	70.4%	5,616	89	6.3%
Midwest	Bituminous	12,076	103	8,091	75	49.2%	10,958	105	10.2%
	Subbituminous	32,457	136	22,185	107	46.3%	31,626	134	2.6%
West	Bituminous	3,000	140	3,143	147	-4.6%	2,672	136	12.3%
	Subbituminous	30,704	133	20,688	92	48.4%	27,759	127	10.6%
U.S. Total	Bituminous	38,822	118	25,246	76	53.8%	35,939	115	8.0%
	Subbituminous	69,131	125	46,377	89	49.1%	65,000	124	6.4%

Source: U.S. Energy Information Administration

Source: Energy Information Administration, Electric Monthly Update



For the Internal U.S. Waterway Monthly Indicators, estimates for the most recent month are based on lock performance management data. The estimates will be superseded by actual data as it becomes available.

Source: Waterborne Commerce Statistics Center

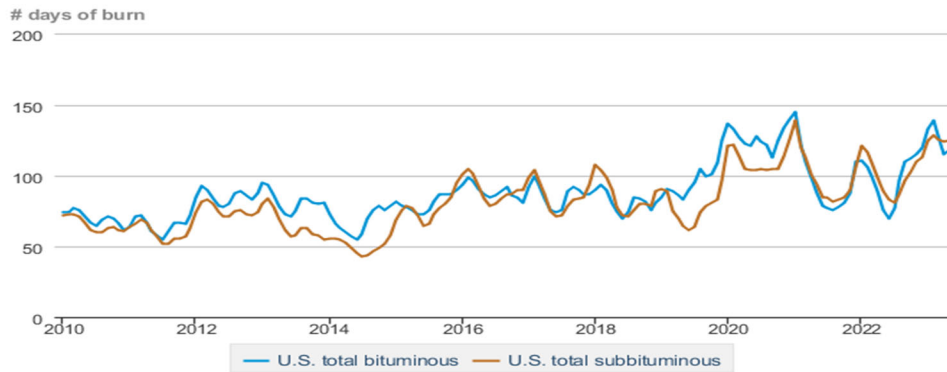
Average weekly coal commodity spot prices
dollars per short ton

	Week ending					Week ago
	07/07/23	07/14/23	07/21/23	07/28/23	08/04/23	change
Central Appalachia 12,500 Btu, 1.2 SO ₂	\$65.50	\$62.00	\$62.25	\$62.25	\$66.25	\$4.00
Northern Appalachia 13,000 Btu, < 3.0 SO ₂	\$56.00	\$53.50	\$52.60	\$52.60	\$52.50	-\$0.10
Illinois Basin 11,800 Btu, 5.0 SO ₂	\$52.75	\$50.00	\$50.00	\$50.00	\$50.00	\$0.00
Powder River Basin 8,800 Btu, 0.8 SO ₂	\$14.45	\$14.30	\$14.30	\$14.30	\$14.30	\$0.00
Uinta Basin 11,700 Btu, 0.8 SO ₂	\$34.00	\$33.75	\$32.50	\$32.50	\$32.50	\$0.00

Data source: With permission, S&P Global

Source: Energy Information Administration (with permission from S&P Global), *Coal Market Report*

Days of burn by non-lignite coal rank, January 2010 - May 2023



eia Data source: U.S. Energy Information Administration

Source: Energy Information Administration, *Electricity Monthly Update Report*

Temperature – heating & cooling degree days (week ending Jul 27)

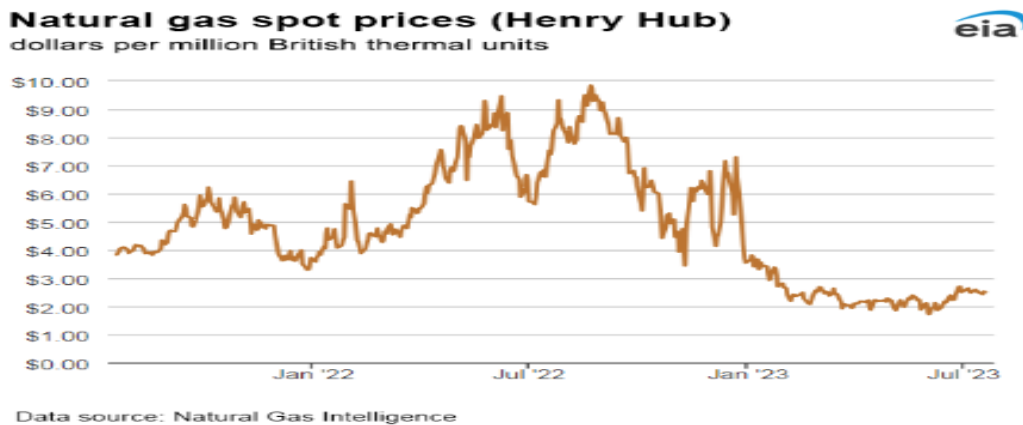
Region	HDDs			CDDs		
	Current total	Deviation from normal	Deviation from last year	Current total	Deviation from normal	Deviation from last year
New England	0	-2	0	55	10	-25
Middle Atlantic	0	-2	0	63	4	-27
E N Central	1	-2	0	59	1	-8
W N Central	0	-3	-1	82	10	5
South Atlantic	0	0	0	103	5	-9
E S Central	0	0	0	95	0	-17
W S Central	0	0	0	139	13	-10
Mountain	0	-3	0	109	29	20
Pacific	1	-2	0	75	29	11
United States	0	-2	0	86	11	-7

Data source: National Oceanic and Atmospheric Administration
Note: HDDs=heating degree days; CDDs=cooling degree days

Source: Energy Information Administration, *Natural Gas Weekly Update*.

U.S. Production of Selected Mineral Commodities	2023 Year to Date - 1st Quarter	2022 Year to Date - 1st Quarter	Percent Change
Aluminum, secondary (000 Mt.)	223.0	215.0	4%
Cement (Mil. Mt.)	18.4	19.0	-3%
Copper (000 Mt.)	291.0	308.0	-6%
Gold (Mt.)	40.4	40.2	0%
Gypsum (Mil. Mt.)	4.7	4.3	9%
Iron Ore (Mil. Mt.)	10.1	8.7	16%
Lead (000 Mt.)	67.2	68.6	-2%
Molybdenum (000 Mt.)	8.1	8.8	-8%
Palladium (Mt.)	2.4	2.9	-17%
Phosphate rock (Mil. Mt.)	4.6	4.6	0%
Platinum (Mt.)	0.7	0.9	-22%
Sand & gravel, construction (Mil. Mt.)	160.0	175.0	-9%
Silver (Mt.)	269.0	258.0	4%
Soda ash (Mil. Mt.)	2.6	2.8	-7%
Stone, crushed (Mil. Mt.)	300.0	295.0	2%
Zinc (000 Mt.)	178.0	180.0	-1%

Source: U.S. Geological Survey, Mineral Industry Surveys. Percent change based on USGS rounded numbers. 2022 data are preliminary estimates. W - withheld, N/A - not available



Source: Energy Information Administration, *Natural Gas Weekly*.

Coal stocks and average number of days of burn for non-lignite coal by region (electric power sector)

Zone	Coal	May 2023		May 2022		% Change of Stocks	April 2023		% Change of Stocks
		Stocks (1000 tons)	Days of Burn	Stocks (1000 tons)	Days of Burn		Stocks (1000 tons)	Days of Burn	
Northeast	Bituminous	2,850	365	1,384	270	105.9%	2,823	365	1.0%
	Subbituminous								
South	Bituminous	20,896	111	12,627	66	65.5%	19,487	110	7.2%
	Subbituminous	5,969	80	3,503	45	70.4%	5,616	89	6.3%
Midwest	Bituminous	12,076	103	8,091	75	49.2%	10,958	105	10.2%
	Subbituminous	32,457	136	22,185	107	46.3%	31,626	134	2.6%
West	Bituminous	3,000	140	3,143	147	-4.6%	2,672	136	12.3%
	Subbituminous	30,704	133	20,688	92	48.4%	27,759	127	10.6%
U.S. Total	Bituminous	38,822	118	25,246	76	53.8%	35,939	115	8.0%
	Subbituminous	69,131	125	46,377	89	49.1%	65,000	124	6.4%

Source: U.S. Energy Information Administration

Source: Energy Information Administration, *Electricity Monthly Update*

Mining-Related Commodity Prices

Commodity Price - Snapshot		
Metals Prices	Date	Price
Cobalt Spot Price (\$/lb)	8/8/23	\$15.15
Copper Spot Price (\$/lb)	8/9/23	\$3.76
Gold Spot Price (\$/ounce)	8/9/23	\$1,916.28
Lead Spot Price (\$/lb)	8/8/23	\$0.95
Lithium Spot Price (\$/kg)	8/9/23	\$36.01
Molybdenum Spot Price (\$/kg)	8/8/23	\$52.63
Nickel Spot Price (\$/lb)	8/8/23	\$9.34
Silver Spot Price (\$/ounce)	8/9/23	\$22.67
Steel HRC Price (\$/mt)	8/9/23	\$747.47
Steel Rebar Price (\$/mt)	8/9/23	\$501.84
Zinc Spot Price (\$/lb)	8/9/23	\$1.12
Energy Prices	Date	Price
Coal Price - Australian Premium Coking Coal Futures (\$/mt)	8/8/23	\$247.25
Coal Spot Price - Central Appalachian (\$/st)	8/4/23	\$66.25
Coal Spot Price - Newcastle futures (\$/mt)	8/8/23	\$142.29
Coal Spot Price - Rotterdam futures (\$/mt)	8/9/23	\$116.00
Natural Gas Spot Price - Henry Hub (\$/mmbtu)	8/2/23	\$2.43
Uranium Spot Price (\$/lb)	8/7/23	\$56.75

Sources: publically available data from eia.gov, dailymetalprice.com, tradingeconomics.com, sgxgroup.com, investing.com

EIA Working Natural Gas Underground Storage

Working gas in underground storage

Region	Stocks billion cubic feet (Bcf)		
	2023-07-28	2023-07-21	change
East	680	670	10
Midwest	775	757	18
Mountain	191	189	2
Pacific	230	232	-2
South Central	1,124	1,139	-15
Total	3,001	2,987	14

Data source: U.S. Energy Information Administration Form EIA-912, *Weekly Underground Natural Gas Storage Report*
 Note: Totals may not equal sum of components because of independent rounding.

Source: Energy Information Administration, *Natural Gas Weekly Update*

EIA Oil and Natural Gas Rig Productivity

Region	NEW-WELL PRODUCTION PER RIG BY REGION			PRODUCTION BY REGION			DUC WELLS BY REGION		
	July 2023	August 2023	change	July 2023	August 2023	change	July 2023	August 2023	change
Anadarko	679	686	7	4,031	4,132	101			
Appalachia	193	193	-	23,656	23,692	36			
Bakken	1,662	1,686	24	2,572	2,618	46			
Eagle Ford	1,424	1,439	15	5,838	5,896	58			
Haynesville	19	19	-	10,916	11,516	600			
Niobrara	1,430	1,437	7	3,955	4,014	59			
Permian	1,058	1,061	3	2,027	2,033	6			
Rig-weighted average	949	963	14	5,245	5,245	-			

Source: Energy Information Administration, *Drilling Productivity Report*

USGS Cobalt – U.S. Trade, Reported Stocks and Listed Prices

Cobalt - April 2023	May-23	Year to Date
U.S. Imports for Consumption - Metals (mt)	671	3,330
U.S. Exports of Cobalt Materials - Cobalt Content (mt)	522	2,230
Reported Stocks of Cobalt Metal (mt)	U.S. Govt	LME
	302	96
Listed Prices by Type (\$/lb): US Spot & LME Cash Avg.	14.44	15.07

Source: USGS, Mineral Industry Survey, Cobalt in May, July 2023

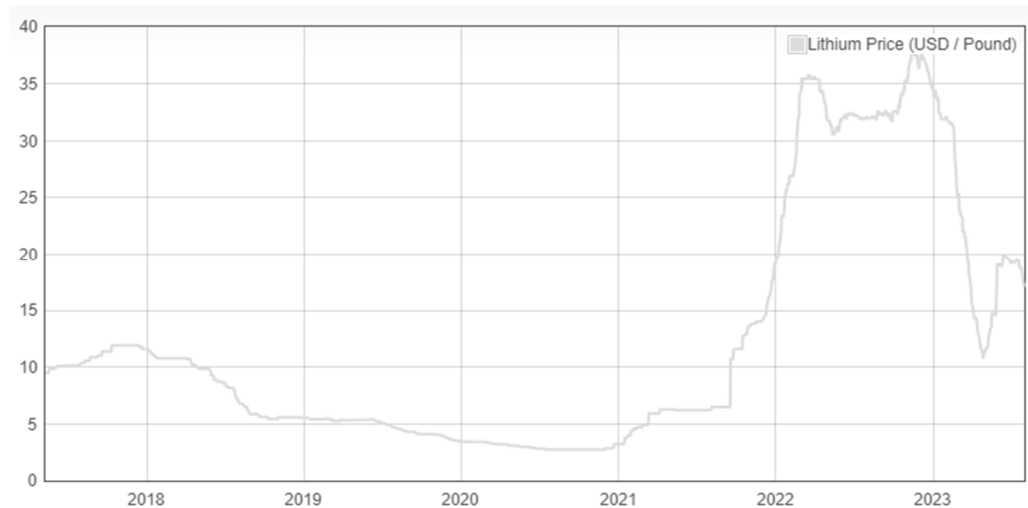
Cobalt and Lithium Prices

Cobalt Prices (US\$/pound):



Source: Dailymetalprice.com - <https://www.dailymetalprice.com/metalpricecharts.php?c=co&u=lb&d=0>

Lithium Prices (US\$/pound):



Source: Dailymetalprice.com - <https://www.dailymetalprice.com/metalpricecharts.php>