



# NATIONAL MINING ASSOCIATION

## WEEKLY STATISTICAL SUMMARY

**August 18, 2023 Edition**  
(Data for Week Ending August 12, 2023)

Prepared by  
**National Mining Association**

101 Constitution Avenue NW, Suite 500 East  
Washington, DC 20001  
(202) 463-2600  
[www.nma.org](http://www.nma.org)



# NMA WEEKLY STATISTICAL SUMMARY

Vol. 61, No. 32 | Dated 08/18/23

## PRODUCTION, CONSUMPTION & TRADE

	Week Ended			* Cumulative Jan 1 to		
	08/12/23	08/06/22	% Chg	08/12/23	08/12/22	% Chg
EIA Coal Production (000 Tons):						
Week Ended/Year to Date	11,941	11,328	5.4%	364,460	363,569	0.2%
52 Weeks Ended	605,425	587,981	3.0%			
<i>Note: the year 2022 has an extra Saturday</i>						
AAR Coal Rail Cars Loaded:	69,176	65,812	5.1%	2,089,281	2,078,892	0.5%
Coal Production	Jul 23/22		% Chg	Jan - Jul 23/22		% Chg
Month Ended - July	49,065	49,301	-0.5%	344,373	343,223	0.3%

### U.S. Department of Commerce Coal Trade (000 Tons)

	June 23/22		% Chg	Jan - June 23/22		% Chg
Coal Exports:						
Metallurgical	3,923	4,551	-13.8%	25,014	23,541	6.3%
Steam Bit. *	4,041	2,967	36.2%	23,288	19,440	19.8%
Lignite	9	7	28.6%	52	42	23.8%
Anthracite	<u>36</u>	<u>68</u>	-47.1%	<u>400</u>	<u>191</u>	109.4%
Total	8,009	7,593	5.5%	48,754	43,214	12.8%
Coal Imports:	282	627	-55.0%	2,034	2,958	-31.2%

	Week Ended			Cumulative Week 1 to		
	08/12/23	08/13/22	% Chg	08/12/23	08/13/22	% Chg
EEl Electric Total Output (Mil. Kwh)	92,749	91,862	1.0%	2,522,496	2,602,823	-3.1%
EEl Coal Region Output (Mil. Kwh)	81,279	79,533	2.2%	2,191,388	2,265,717	-3.3%
AISI Raw Steel Output (000 Tons)	1,737	1,719	1.0%	54,607	55,801	-2.1%

## EIA AVERAGE COAL & NATURAL GAS SPOT PRICES

Dollars Per Short Ton

Average Coal Spot Prices (\$/Short Ton)	Week Ending			Natural Gas Spot Prices (\$/MMBtu)	
	08/11/23	08/04/23	% Chg	Wed.	8/09/23
Central App, 12,500 Btu, 1.2 SO <sub>2</sub>	\$66.25	\$66.25	0.0%	Henry Hub	2.91
Northern App, 13,000 Btu, < 3.0 SO <sub>2</sub>	52.50	52.50	0.0%	New York	1.43
Illinois Basin, 11,800, 5.0 SO <sub>2</sub>	50.00	50.00	0.0%	Chicago	2.64
Powder River Basin, 8,800 Btu 0.8 SO <sub>2</sub>	14.30	14.30	0.0%	Cal.Comp.Avg.	4.79
Uinta Basin, 11,700 Btu, 0.8 SO <sub>2</sub>	32.50	32.50	0.0%		

Coal exports and Imports are "as reported" (not revised); \*Steam excludes lignite & anthracite. All data in this report are preliminary and subject to revision. r/ revised.

Sources: EIA; Edison Electric Institute; American Iron & Steel Institute; Association of American Railroads; Dept. of Commerce; S&P Global; NGI's Daily Gas Price Index

<b>EIA Estimated Weekly U.S. Coal Production Overview</b>									
Coal-Producing Region & State (thousand short tons)	Week Ended			Year to Date			52 Weeks Ended		
	8/12/2023 (week 32)	8/5/2023 (week 31)	8/6/2022 (week 32)	8/12/2023	8/12/2022	% Change	8/12/2023	8/6/2022	% Change
Alabama	238	224	207	7,024	6,346	10.7	11,328	9,468	19.6
Alaska	20	20	17	630	590	6.8	1,070	982	9.0
Colorado	250	225	253	7,531	7,934	-5.1	12,622	13,207	-4.4
Illinois	790	727	675	25,030	23,566	6.2	39,636	35,604	11.3
Indiana	550	527	443	16,534	13,969	18.4	26,545	21,504	23.4
<b>Kentucky total</b>	<b>585</b>	<b>554</b>	<b>522</b>	<b>18,293</b>	<b>17,444</b>	<b>4.9</b>	<b>29,804</b>	<b>27,674</b>	<b>7.7</b>
Eastern (KY)	260	248	221	7,959	7,295	9.1	12,913	11,392	13.4
Western (KY)	325	306	301	10,334	10,149	1.8	16,891	16,282	3.7
Louisiana	6	6	6	191	182	5.1	322	313	2.9
Maryland	29	28	27	850	876	-2.9	1,457	1,343	8.5
Mississippi	69	62	67	1,891	2,102	-10.1	3,218	3,255	-1.1
Missouri	2	2	1	67	42	59.8	100	48	108.3
Montana	544	492	545	16,873	17,652	-4.4	27,953	29,262	-4.5
New Mexico	199	197	218	6,032	6,628	-9.0	10,154	10,476	-3.1
North Dakota	515	501	546	16,222	16,552	-2.0	26,901	26,587	1.2
Ohio	38	36	42	1,264	1,605	-21.3	2,189	2,742	-20.2
Oklahoma	s	s	s	1	1	77.3	2	1	100.0
<b>Pennsylvania total</b>	<b>776</b>	<b>753</b>	<b>687</b>	<b>24,809</b>	<b>24,443</b>	<b>1.5</b>	<b>40,877</b>	<b>39,318</b>	<b>4.0</b>
Anthracite (PA)	57	51	46	1,715	1,475	16.3	2,768	2,354	17.6
Bituminous (PA)	718	702	641	23,094	22,969	0.5	38,109	36,964	3.1
Tennessee	s	s	.	1	s	50.0	1	s	100.0
Texas	321	306	320	9,530	10,229	-6.8	16,678	17,641	-5.5
Utah	177	152	215	5,286	6,959	-24.0	9,247	11,704	-21.0
Virginia	235	220	216	7,013	6,512	7.7	11,688	10,759	8.6
<b>West Virginia total</b>	<b>1,744</b>	<b>1,606</b>	<b>1,551</b>	<b>53,740</b>	<b>51,510</b>	<b>4.3</b>	<b>87,311</b>	<b>81,206</b>	<b>7.5</b>
Northern (WV)	971	903	892	29,321	28,757	2.0	48,364	45,718	5.8
Southern (WV)	773	703	659	24,419	22,753	7.3	38,947	35,488	9.7
Wyoming	4,852	4,524	4,770	145,646	148,426	-1.9	246,320	244,885	0.6
<b>Appalachian total</b>	<b>3,320</b>	<b>3,114</b>	<b>2,951</b>	<b>102,661</b>	<b>98,588</b>	<b>4.1</b>	<b>167,765</b>	<b>156,229</b>	<b>7.4</b>
<b>Interior total</b>	<b>2,064</b>	<b>1,935</b>	<b>1,814</b>	<b>63,578</b>	<b>60,239</b>	<b>5.5</b>	<b>103,392</b>	<b>94,649</b>	<b>9.2</b>
<b>Western total</b>	<b>6,556</b>	<b>6,110</b>	<b>6,563</b>	<b>198,221</b>	<b>204,741</b>	<b>-3.2</b>	<b>334,267</b>	<b>337,103</b>	<b>-0.8</b>
<b>East of Mississippi River</b>	<b>5,055</b>	<b>4,736</b>	<b>4,438</b>	<b>156,450</b>	<b>148,374</b>	<b>5.4</b>	<b>254,056</b>	<b>232,874</b>	<b>9.1</b>
<b>West of Mississippi River</b>	<b>6,886</b>	<b>6,424</b>	<b>6,891</b>	<b>208,010</b>	<b>215,194</b>	<b>-3.3</b>	<b>351,369</b>	<b>355,107</b>	<b>-1.1</b>
Bituminous and lignite	11,883	11,109	11,283	362,745	362,094	0.2	602,657	585,627	2.9
Anthracite	57	51	46	1,715	1,475	16.3	2,768	2,354	17.6
<b>U.S. total</b>	<b>11,941</b>	<b>11,160</b>	<b>11,328</b>	<b>364,460</b>	<b>363,569</b>	<b>0.2</b>	<b>605,425</b>	<b>587,981</b>	<b>3.0</b>
Railroad cars loaded	69,176	64,574	65,812	2,089,281	2,078,892	0.5	3,496,133	3,391,369	3.1

Source: Energy Information Administration



**Weekly Electric Output**

**Volume 91 No. 32**

**OUTPUT FOR WEEK ENDED - Aug 12, 2023**

**Aug 16, 2023**

The net available amount of electric energy distributed by the Total Electric Utility Industry\* for the week ended Saturday, **Aug 12, 2023** was **92,749** gigawatthours (GWh), according to the Edison Electric Institute. This is equivalent to **198** on the weekly electric output index.

**WEEKLY ELECTRIC OUTPUT BY GEOGRAPHIC DIVISION**

(48 CONTIGUOUS STATES)

	Week Ended August 12		52 Weeks Ended August 12	
	GWh Output	% Increase Over Corresponding Week of 2022	GWh Output	% Increase Over Corresponding Period of 2022
New England	2,412	-15.3	111,388	-4.7
Mid-Atlantic	9,069	-12.8	403,665	-4.3
Central Industrial	13,316	-2.7	637,232	-3.7
West Central	7,303	-3.3	337,342	-1.3
Southeast	22,504	2.4	1,003,839	-3.1
South Central	22,439	15.7	841,898	1.7
Rocky Mountain	6,648	1.9	293,854	0.0
Pacific Northwest	2,844	-3.3	161,438	1.0
Pacific Southwest	6,214	-5.0	271,918	1.3
Total United States	92,749	1.0	4,062,574	-1.6

**WEEKLY ELECTRIC OUTPUT IN PREVIOUS WEEKS--GWh**

Week Ended	2023	Week Ended	2022	% Inc. (23/22)	52 Weeks Ended	2023	% Inc. (23/22)
Jul 22	95,454	Jul 23	99,445	-4.0	Jul 22	4,058,716	-1.5
Jul 29	97,452	Jul 30	93,723	4.0	Jul 29	4,062,445	-1.4
Aug 05	95,336	Aug 06	96,094	-0.8	Aug 05	4,061,687	-1.6
Aug 12	92,749	Aug 13	91,862	1.0	Aug 12	4,062,574	-1.6
<b>Aug 12</b>	<b>2,522,496</b>	<b>Aug 13</b>	<b>2,602,823</b>	<b>-3.1</b>	<b>YEAR TO DATE, FIRST 32 WEEKS</b>		

**WEEKLY ELECTRIC OUTPUT INDEX--TOTAL U.S.\***

**SEASONALLY ADJUSTED 1982 = 100**

Week Ended	2023	Week Ended	2022	Week Ended	2021
Jul 22	195	Jul 23	191	Jul 24	171
Jul 29	203	Jul 30	182	Jul 31	181
Aug 05	200	Aug 06	190	Aug 07	169
Aug 12	198	Aug 13	197	Aug 14	192

\* Excludes Alaska and Hawaii.

+ Includes investor-owned companies, cooperatives and government-owned utilities.

Copyright © 2023 Edison Electric Institute. All rights reserved.

**EI WEEKLY ELECTRIC OUTPUT BY GEOGRAPHIC DIVISION  
(48 CONTIGUOUS STATES)**

	Week Ended			NMA CUMULATIVE JANUARY WEEK ONE TO			52 Weeks Ended		
	12-Aug 2023 GWh Output	13-Aug 2022 GWh Output	% Increase Over Corresponding Week	12-Aug 2023 GWh Output	13-Aug 2022 GWh Output	% Increase Over Corresponding Week	12-Aug 2023 GWh Output	13-Aug 2022 GWh Output	% Increase Over Corresponding Week
<b>New England</b>	2,412	2,849	-15.3%	<b>68,405</b>	<b>72,798</b>	<b>-6.0%</b>	111,388	116,934	-4.7%
<b>Mid-Atlantic</b>	9,069	10,402	-12.8%	<b>249,033</b>	<b>264,831</b>	<b>-6.0%</b>	403,665	421,764	-4.3%
<b>Central Industrial</b>	13,316	13,687	-2.7%	<b>398,693</b>	<b>419,086</b>	<b>-4.9%</b>	637,232	661,379	-3.7%
<b>West Central</b>	7,303	7,549	-3.3%	<b>209,227</b>	<b>213,720</b>	<b>-2.1%</b>	337,342	341,833	-1.3%
<b>Southeast</b>	22,504	21,977	2.4%	<b>623,519</b>	<b>656,233</b>	<b>-5.0%</b>	1,003,839	1,035,926	-3.1%
<b>South Central</b>	22,439	19,392	15.7%	<b>531,856</b>	<b>530,497</b>	<b>0.3%</b>	841,898	827,682	1.7%
<b>Rocky Mountain</b>	6,648	6,526	1.9%	<b>179,061</b>	<b>181,350</b>	<b>-1.3%</b>	293,854	293,889	0.0%
<b>Pacific Northwest</b>	2,844	2,941	-3.3%	<b>100,441</b>	<b>100,363</b>	<b>0.1%</b>	161,438	159,833	1.0%
<b>Pacific Southwest</b>	6,214	6,539	-5.0%	<b>162,262</b>	<b>163,945</b>	<b>-1.0%</b>	271,918	268,368	1.3%
<b>Total United States <sup>1/</sup></b>	<u>92,749</u>	<u>91,862</u>	1.0%	<u><b>2,522,496</b></u>	<u><b>2,602,823</b></u>	<b>-3.1%</b>	<u>4,062,574</u>	<u>4,127,608</u>	-1.6%
<b>Coal Regions Only <sup>2/</sup></b>	81,279	79,533	2.2%	<b>2,191,388</b>	<b>2,265,717</b>	<b>-3.3%</b>	3,517,830	3,582,473	-1.8%

**Notes:** EEI output data are an estimate of electricity load made available for distribution derived as weekly net generation + purchases from non-utilities + net imports - exports - sales for resale. It is not meant to be a measure of electricity generation for the U.S. EEI survey data represent the majority of national distribution (large utilities, large government power projects, some independent and large municipal power projects). The remaining segment of the industry (smaller producers) is estimated. Non-utility generation is captured via direct sales to utilities. **Note: the year 2022 has an extra Saturday.**

<sup>1/</sup> Excludes Alaska and Hawaii

<sup>2/</sup> Excludes New England and Pacific regions

SOURCE: Edison Electric Institute (EEI), *Weekly Electric Output Report*.

AMERICAN IRON AND STEEL INSTITUTE  
 25 Massachusetts Avenue, NW, Suite 800  
 Washington, D.C. 20001

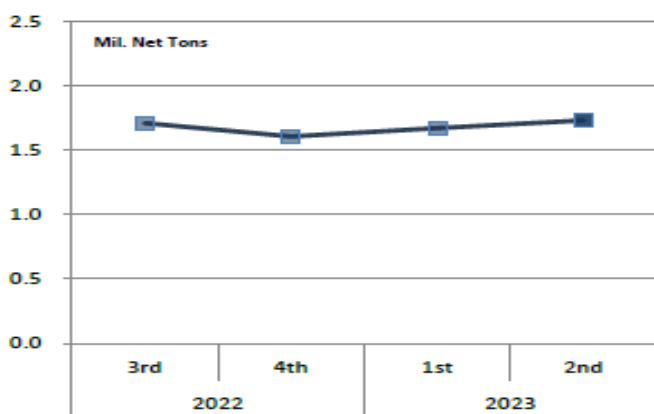
August 14, 2023

**ESTIMATED WEEKLY RAW STEEL \* PRODUCTION**

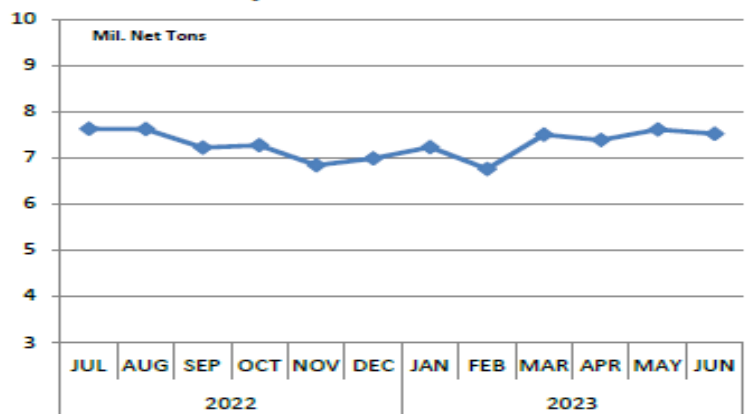
<u>Period</u>	<u>Thousand Net Tons</u>	<u>Percent Change from Previous Period</u>	<u>Percent Capability Utilization**</u>	<u>Production by District</u>		
				<u>Week Ending Aug 12</u>	<u>Aug 5</u>	
<b><u>Week Ending</u></b>				North East	132	133
				Great Lakes	568	549
August 12, 2023	1,737	0.6	76.4	Midwest	217	225
August 12, 2022	1,719	1.0	78.0	Southern	749	752
August 5, 2023	1,727	-1.3	75.9	Western	71	68
				<b>Total</b>	<b>1,737</b>	<b>1,727</b>
<b><u>Year-to-Date +</u></b>						
August 12, 2023	54,607	-2.1	75.9			
August 12, 2022	55,801	-	79.7			

\*Raw steel production tonnage included in this report is estimated based on a sampling of steel producers (50% of domestic producers). Therefore, this report should be used primarily to assess production trends. The AISI production report "AIS 7," produced monthly and available by subscription, provides a more accurate summary of steel production based on data supplied by companies representing approximately 75% of U.S. production capacity plus includes revisions for previous months.

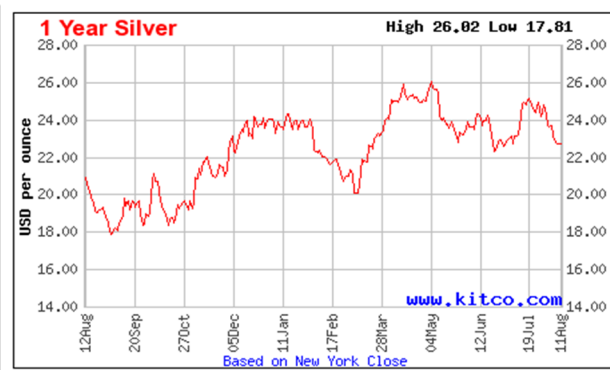
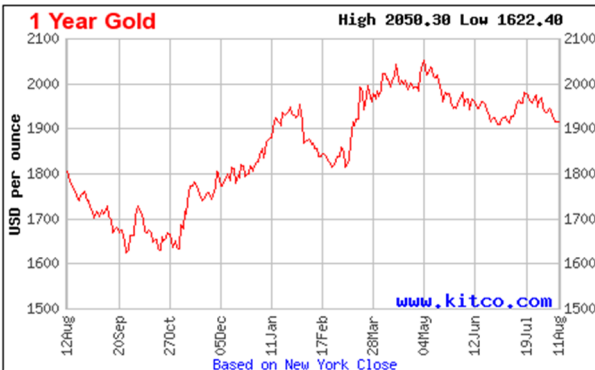
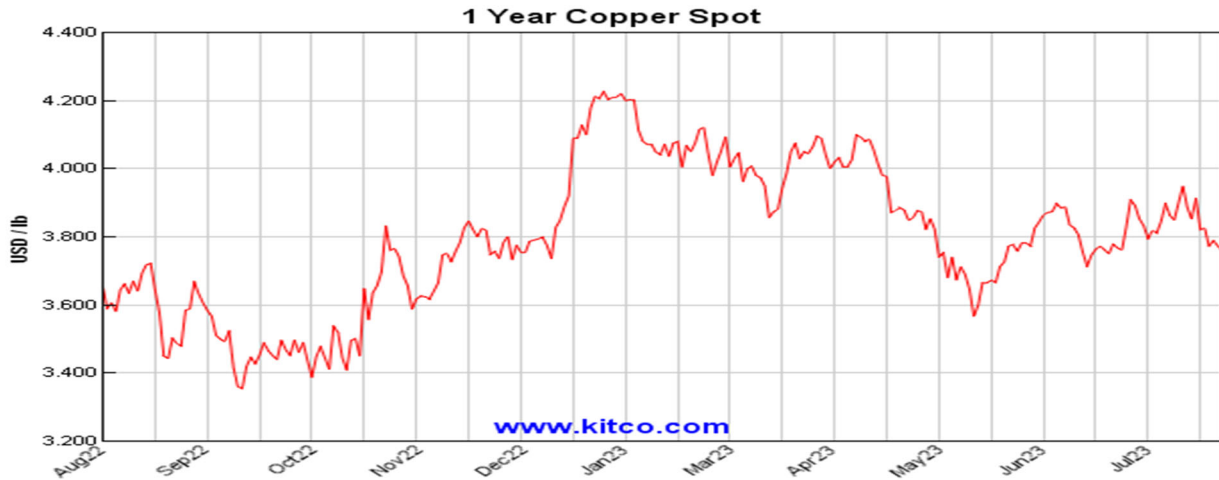
**Average Weekly Raw Steel Production**



**Monthly Raw Steel Production**



\*Steel in the first solid state after melting suitable for further processing or sale, including ingots, steel for castings and strand or pressure cast blooms, slabs or other product forms. \*\* Based on tonnage capability to produce raw steel for a sustained full order book.



Source: Kitco website - [www.kitco.com/connecting.html](http://www.kitco.com/connecting.html)

**U.S. Rail Traffic<sup>1</sup>**  
 Week 32, 2023 – Ended August 12, 2023

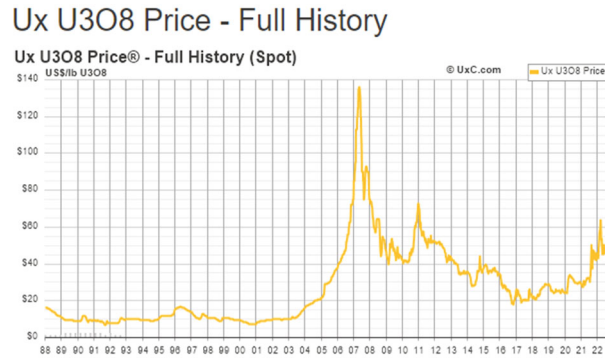
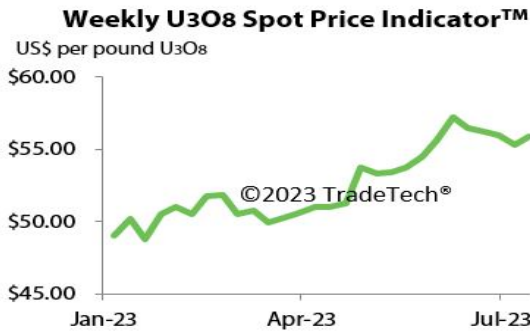
	This Week		Year-To-Date		
	Cars	vs 2022	Cumulative	Avg/wk <sup>2</sup>	vs 2022
<b>Total Carloads</b>	<b>224,412</b>	<b>-3.0%</b>	<b>7,166,006</b>	<b>223,938</b>	<b>0.2%</b>
Chemicals	29,957	-5.9%	994,603	31,081	-3.8%
Coal	69,176	-0.2%	2,089,262	65,289	0.4%
Farm Products excl. Grain, and Food	15,635	-3.4%	516,495	16,140	1.1%
Forest Products	7,415	-15.1%	260,432	8,139	-7.3%
Grain	14,533	-28.2%	589,823	18,432	-12.3%
Metallic Ores and Metals	20,361	-1.1%	660,296	20,634	4.8%
Motor Vehicles and Parts	14,945	11.4%	469,456	14,671	13.4%
Nonmetallic Minerals	33,157	-2.4%	1,013,478	31,671	4.2%
Petroleum and Petroleum Products	9,952	16.6%	298,653	9,333	9.5%
Other	9,281	8.1%	273,508	8,547	-2.1%
<b>Total Intermodal Units</b>	<b>248,086</b>	<b>-5.3%</b>	<b>7,578,973</b>	<b>236,843</b>	<b>-9.4%</b>
<b>Total Traffic</b>	<b>472,498</b>	<b>-4.2%</b>	<b>14,744,979</b>	<b>460,781</b>	<b>-4.9%</b>

<sup>1</sup> Excludes U.S. operations of CPKC, CN and GMXT.

<sup>2</sup> Average per week figures may not sum to totals as a result of independent rounding.

Source: AAR website - <https://www.aar.org/Pages/NEWS-and-EVENTS.aspx>

### Trade Tech's and UX's Uranium Price Indicators



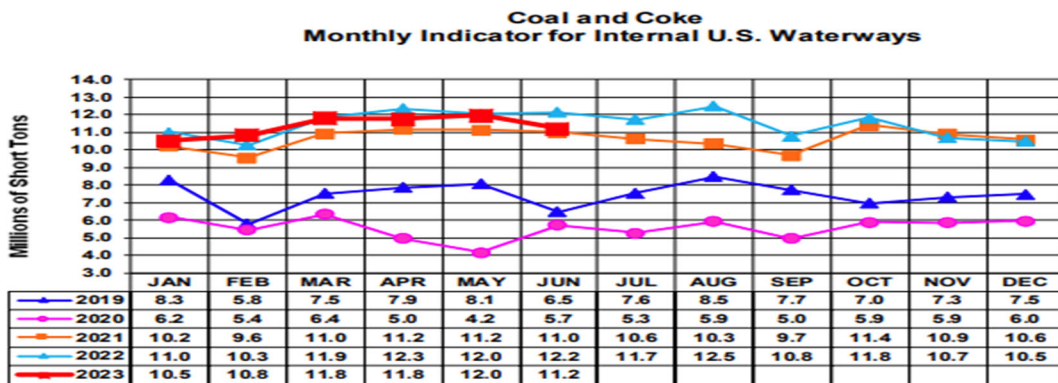
Sources: Trade Tech, Uranium Info Website – [www.uranium.info](http://www.uranium.info) ; Source: Ux Consulting Co., LLC – <http://www.uxc.com>

### Coal stocks and average number of days of burn for non-lignite coal by region (electric power sector)

Zone	Coal	May 2023		May 2022		% Change of Stocks	April 2023		% Change of Stocks
		Stocks (1000 tons)	Days of Burn	Stocks (1000 tons)	Days of Burn		Stocks (1000 tons)	Days of Burn	
Northeast	Bituminous	2,850	365	1,384	270	105.9%	2,823	365	1.0%
	Subbituminous	-	-	-	-	-	-	-	-
South	Bituminous	20,896	111	12,627	66	65.5%	19,487	110	7.2%
	Subbituminous	5,969	80	3,503	45	70.4%	5,616	89	6.3%
Midwest	Bituminous	12,076	103	8,091	75	49.2%	10,958	105	10.2%
	Subbituminous	32,457	136	22,185	107	46.3%	31,626	134	2.6%
West	Bituminous	3,000	140	3,143	147	-4.6%	2,672	136	12.3%
	Subbituminous	30,704	133	20,688	92	48.4%	27,759	127	10.6%
U.S. Total	Bituminous	38,822	118	25,246	76	53.8%	35,939	115	8.0%
	Subbituminous	69,131	125	46,377	89	49.1%	65,000	124	6.4%

Source: U.S. Energy Information Administration

Source: Energy Information Administration, Electric Monthly Update



For the Internal U.S. Waterway Monthly Indicators, estimates for the most recent month are based on lock performance management data. The estimates will be superseded by actual data as it becomes available.

Source: Waterborne Commerce Statistics Center

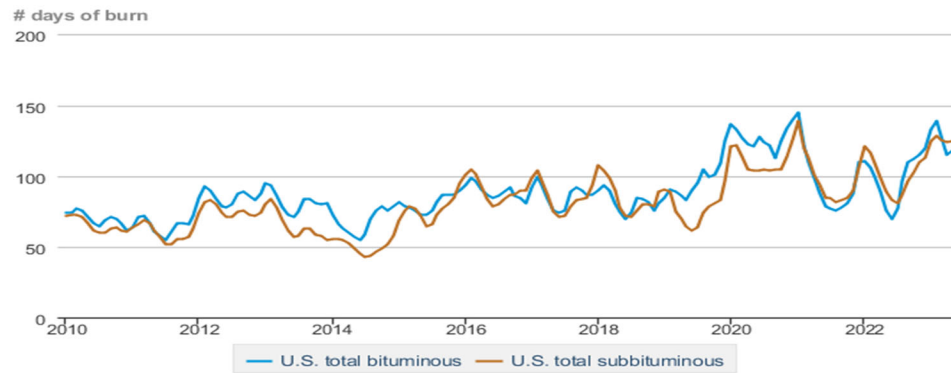
**Average weekly coal commodity spot prices**  
dollars per short ton

	Week ending					Week ago
	07/14/23	07/21/23	07/28/23	08/04/23	08/11/23	change
Central Appalachia 12,500 Btu, 1.2 SO <sub>2</sub>	\$62.00	\$62.25	\$62.25	\$66.25	\$66.25	\$0.00
Northern Appalachia 13,000 Btu, < 3.0 SO <sub>2</sub>	\$53.50	\$52.60	\$52.60	\$52.50	\$52.50	\$0.00
Illinois Basin 11,800 Btu, 5.0 SO <sub>2</sub>	\$50.00	\$50.00	\$50.00	\$50.00	\$50.00	\$0.00
Powder River Basin 8,800 Btu, 0.8 SO <sub>2</sub>	\$14.30	\$14.30	\$14.30	\$14.30	\$14.30	\$0.00
Uinta Basin 11,700 Btu, 0.8 SO <sub>2</sub>	\$33.75	\$32.50	\$32.50	\$32.50	\$32.50	\$0.00

Data source: With permission, S&P Global

Source: Energy Information Administration (with permission from S&P Global), *Coal Market Report*

**Days of burn by non-lignite coal rank, January 2010 - May 2023**



eia Data source: U.S. Energy Information Administration

Source: Energy Information Administration, *Electricity Monthly Update Report*

**Temperature – heating & cooling degree days (week ending Aug 03)**

Region	HDDs			CDDs		
	Current total	Deviation from normal	Deviation from last year	Current total	Deviation from normal	Deviation from last year
New England	4	2	4	33	-12	-30
Middle Atlantic	2	-1	2	51	-8	-18
E N Central	2	-3	0	56	-1	1
W N Central	0	-2	-2	82	11	14
South Atlantic	0	0	0	97	0	-12
E S Central	0	0	0	101	6	1
W S Central	0	0	0	154	28	11
Mountain	0	-2	0	90	12	12
Pacific	0	-2	0	60	13	-14
United States	1	-1	0	80	6	-5

Data source: National Oceanic and Atmospheric Administration  
Note: HDDs=heating degree days; CDDs=cooling degree days

Source: Energy Information Administration, *Natural Gas Weekly Update*.

U.S. Production of Selected Mineral Commodities	2023 Year to Date - 1st Quarter	2022 Year to Date - 1st Quarter	Percent Change
Aluminum, secondary (000 Mt.)	223.0	215.0	4%
Cement (Mil. Mt.)	18.4	19.0	-3%
Copper (000 Mt.)	291.0	308.0	-6%
Gold (Mt.)	40.4	40.2	0%
Gypsum (Mil. Mt.)	4.7	4.3	9%
Iron Ore (Mil. Mt.)	10.1	8.7	16%
Lead (000 Mt.)	67.2	68.6	-2%
Molybdenum (000 Mt.)	8.1	8.8	-8%
Palladium (Mt.)	2.4	2.9	-17%
Phosphate rock (Mil. Mt.)	4.6	4.6	0%
Platinum (Mt.)	0.7	0.9	-22%
Sand & gravel, construction (Mil. Mt.)	160.0	175.0	-9%
Silver (Mt.)	269.0	258.0	4%
Soda ash (Mil. Mt.)	2.6	2.8	-7%
Stone, crushed (Mil. Mt.)	300.0	295.0	2%
Zinc (000 Mt.)	178.0	180.0	-1%

Source: U.S. Geological Survey, Mineral Industry Surveys. Percent change based on USGS rounded numbers. 2022 data are preliminary estimates. W - withheld, N/A - not available



Data source: Natural Gas Intelligence

Source: Energy Information Administration, *Natural Gas Weekly*.

**Coal stocks and average number of days of burn for non-lignite coal by region (electric power sector)**

Zone	Coal	May 2023		May 2022		% Change of Stocks	April 2023		% Change of Stocks
		Stocks (1000 tons)	Days of Burn	Stocks (1000 tons)	Days of Burn		Stocks (1000 tons)	Days of Burn	
Northeast	Bituminous	2,850	365	1,384	270	105.9%	2,823	365	1.0%
	Subbituminous								
South	Bituminous	20,896	111	12,627	66	65.5%	19,487	110	7.2%
	Subbituminous	5,969	80	3,503	45	70.4%	5,616	89	6.3%
Midwest	Bituminous	12,076	103	8,091	75	49.2%	10,958	105	10.2%
	Subbituminous	32,457	136	22,185	107	46.3%	31,626	134	2.6%
West	Bituminous	3,000	140	3,143	147	-4.6%	2,672	136	12.3%
	Subbituminous	30,704	133	20,688	92	48.4%	27,759	127	10.6%
U.S. Total	Bituminous	38,822	118	25,246	76	53.8%	35,939	115	8.0%
	Subbituminous	69,131	125	46,377	89	49.1%	65,000	124	6.4%

Source: U.S. Energy Information Administration

Source: Energy Information Administration, *Electricity Monthly Update*

### Mining-Related Commodity Prices

Commodity Price - Snapshot		
Metals Prices	Date	Price
Cobalt Spot Price (\$/lb)	8/14/23	\$15.15
Copper Spot Price (\$/lb)	8/15/23	\$3.65
Gold Spot Price (\$/ounce)	8/15/23	\$1,904.10
Lead Spot Price (\$/lb)	8/14/23	\$0.94
Lithium Spot Price (\$/kg)	8/15/23	\$34.92
Molybdenum Spot Price (\$/kg)	8/14/23	\$58.75
Nickel Spot Price (\$/lb)	8/14/23	\$8.97
Silver Spot Price (\$/ounce)	8/15/23	\$22.41
Steel HRC Price (\$/mt)	8/15/23	\$745.30
Steel Rebar Price (\$/mt)	8/15/23	\$491.32
Zinc Spot Price (\$/lb)	8/15/23	\$1.04
Energy Prices	Date	Price
Coal Price - Australian Premium Coking Coal Futures (\$/mt)	8/15/23	\$251.83
Coal Spot Price - Central Appalachian (\$/st)	8/11/23	\$66.25
Coal Spot Price - Newcastle futures (\$/mt)	8/15/23	\$146.63
Coal Spot Price - Rotterdam futures (\$/mt)	8/14/23	\$115.60
Natural Gas Spot Price - Henry Hub (\$/mmbtu)	8/9/23	\$2.91
Uranium Spot Price (\$/lb)	8/7/23	\$56.75

Sources: publically available data from eia.gov, dailymetalprice.com, tradingeconomics.com, sgxgroup.com, investing.com

### EIA Working Natural Gas Underground Storage

#### Working gas in underground storage

Region	Stocks billion cubic feet (Bcf)		
	2023-08-04	2023-07-28	change
East	700	680	20
Midwest	793	775	18
Mountain	196	191	5
Pacific	233	230	3
South Central	1,108	1,124	-16
Total	3,030	3,001	29

Data source: U.S. Energy Information Administration Form EIA-912, *Weekly Underground Natural Gas Storage Report*

Note: Totals may not equal sum of components because of independent rounding.

Source: Energy Information Administration, *Natural Gas Weekly Update*

### EIA Oil and Natural Gas Rig Productivity

Region	NEW-WELL PRODUCTION PER RIG BY REGION			PRODUCTION BY REGION			DUC WELLS BY REGION		
	July 2023	August 2023	change	July 2023	August 2023	change	July 2023	August 2023	change
Anadarko	679	686	7	4,031	4,132	101			
Appalachia	193	193	-	23,656	23,692	36			
Bakken	1,662	1,686	24	2,572	2,618	46			
Eagle Ford	1,424	1,439	15	5,838	5,896	58			
Haynesville	19	19	-	10,916	11,516	600			
Niobrara	1,430	1,437	7	3,955	4,014	59			
Permian	1,058	1,061	3	2,027	2,033	6			
Rig-weighted average	949	963	14	5,245	5,245	-			

Source: Energy Information Administration, *Drilling Productivity Report*

### USGS Cobalt – U.S. Trade, Reported Stocks and Listed Prices

Cobalt - April 2023	May-23	Year to Date
U.S. Imports for Consumption - Metals (mt)	671	3,330
U.S. Exports of Cobalt Materials - Cobalt Content (mt)	522	2,230
Reported Stocks of Cobalt Metal (mt)	U.S. Govt	LME
	302	96
Listed Prices by Type (\$/lb): US Spot & LME Cash Avg.	14.44	15.07

Source: USGS, Mineral Industry Survey, Cobalt in May, July 2023

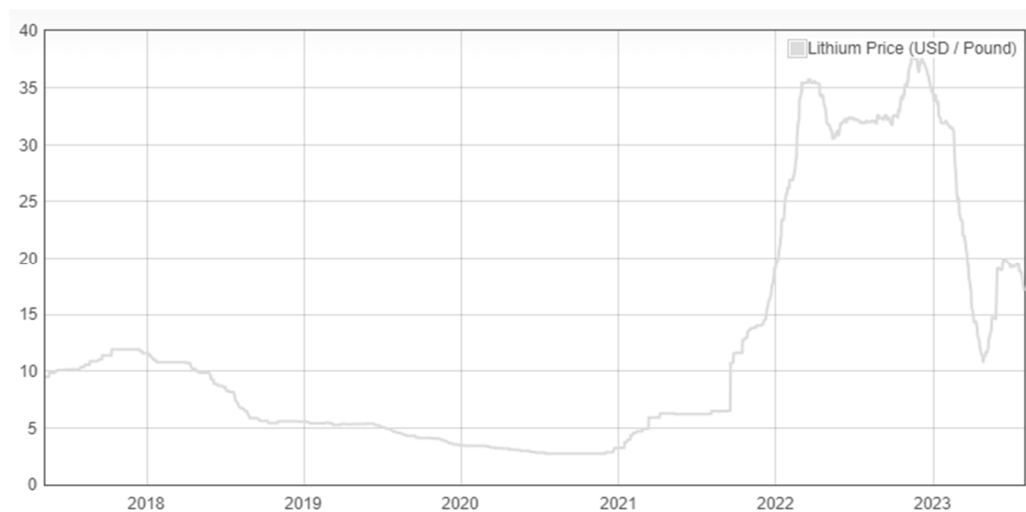
### Cobalt and Lithium Prices

#### Cobalt Prices (US\$/pound):



Source: Dailymetalprice.com - <https://www.dailymetalprice.com/metalpricecharts.php?c=co&u=lb&d=0>

#### Lithium Prices (US\$/pound):



Source: Dailymetalprice.com - <https://www.dailymetalprice.com/metalpricecharts.php>