



# NATIONAL MINING ASSOCIATION

## WEEKLY STATISTICAL SUMMARY

**August 25, 2023 Edition**  
(Data for Week Ending August 19, 2023)

Prepared by  
**National Mining Association**

101 Constitution Avenue NW, Suite 500 East  
Washington, DC 20001  
(202) 463-2600  
[www.nma.org](http://www.nma.org)



# NMA WEEKLY STATISTICAL SUMMARY

Vol. 61, No. 33 | Dated 08/25/23

## PRODUCTION, CONSUMPTION & TRADE

	Week Ended			* Cumulative Jan 1 to		
	08/19/23	08/14/22	% Chg	08/19/23	08/19/22	% Chg
EIA Coal Production (000 Tons):						
Week Ended/Year to Date	12,033	11,929	0.9%	376,493	375,345	0.3%
52 Weeks Ended	605,529	588,509	2.9%			
<i>Note: the year 2022 has an extra Saturday</i>						
AAR Coal Rail Cars Loaded:	69,773	69,300	0.7%	2,159,054	2,147,303	0.5%
Coal Production	Jul 23/22		% Chg	Jan - Jul 23/22		% Chg
Month Ended - July	49,065	49,301	-0.5%	344,373	343,223	0.3%

### U.S. Department of Commerce Coal Trade (000 Tons)

	June 23/22		% Chg	Jan - June 23/22		% Chg
Coal Exports:						
Metallurgical	3,923	4,551	-13.8%	25,014	23,541	6.3%
Steam Bit. *	4,041	2,967	36.2%	23,288	19,440	19.8%
Lignite	9	7	28.6%	52	42	23.8%
Anthracite	<u>36</u>	<u>68</u>	-47.1%	<u>400</u>	<u>191</u>	109.4%
Total	8,009	7,593	5.5%	48,754	43,214	12.8%
Coal Imports:	282	627	-55.0%	2,034	2,958	-31.2%

	Week Ended			Cumulative Week 1 to		
	08/19/23	08/20/22	% Chg	08/19/23	08/20/22	% Chg
EEl Electric Total Output (Mil. Kwh)	92,153	86,685	6.3%	2,614,649	2,689,508	-2.8%
EEl Coal Region Output (Mil. Kwh)	80,163	74,696	7.3%	2,271,551	2,340,413	-2.9%
AISI Raw Steel Output (000 Tons)	1,756	1,719	2.2%	56,363	57,520	-2.0%

## EIA AVERAGE COAL & NATURAL GAS SPOT PRICES

Dollars Per Short Ton

Average Coal Spot Prices (\$/Short Ton)	Week Ending			Natural Gas Spot Prices (\$/MMBtu)	
	08/18/23	08/11/23	% Chg	Wed.	8/16/23
Central App, 12,500 Btu, 1.2 SO <sub>2</sub>	\$70.00	\$66.25	5.7%	Henry Hub	2.55
Northern App, 13,000 Btu, < 3.0 SO <sub>2</sub>	52.50	52.50	0.0%	New York	1.36
Illinois Basin, 11,800, 5.0 SO <sub>2</sub>	50.00	50.00	0.0%	Chicago	2.38
Powder River Basin, 8,800 Btu 0.8 SO <sub>2</sub>	14.30	14.30	0.0%	Cal.Comp.Avg.	4.75
Uinta Basin, 11,700 Btu, 0.8 SO <sub>2</sub>	32.50	32.50	0.0%		

Coal exports and Imports are "as reported" (not revised); \*Steam excludes lignite & anthracite. All data in this report are preliminary and subject to revision. r/ revised.

Sources: EIA; Edison Electric Institute; American Iron & Steel Institute; Association of American Railroads; Dept. of Commerce; S&P Global; NGI's Daily Gas Price Index

<b>EIA Estimated Weekly U.S. Coal Production Overview</b>									
Coal-Producing Region & State (thousand short tons)	Week Ended			Year to Date			52 Weeks Ended		
	8/19/2023 (week 33)	8/12/2023 (week 32)	8/13/2022 (week 33)	8/19/2023	8/19/2022	% Change	8/19/2023	8/13/2022	% Change
Alabama	240	238	218	7,265	6,561	10.7	11,351	9,514	19.3
Alaska	20	20	18	650	608	6.9	1,072	983	9.1
Colorado	250	250	267	7,781	8,197	-5.1	12,606	13,213	-4.6
Illinois	799	790	711	25,829	24,268	6.4	39,724	35,695	11.3
Indiana	559	550	467	17,093	14,430	18.5	26,636	21,586	23.4
<b>Kentucky total</b>	<b>594</b>	<b>585</b>	<b>550</b>	<b>18,886</b>	<b>17,986</b>	<b>5.0</b>	<b>29,848</b>	<b>27,735</b>	<b>7.6</b>
Eastern (KY)	265	260	233	8,224	7,525	9.3	12,946	11,431	13.3
Western (KY)	329	325	317	10,663	10,462	1.9	16,903	16,304	3.7
Louisiana	6	6	6	197	188	5.1	322	311	3.5
Maryland	29	29	29	880	904	-2.7	1,458	1,347	8.2
Mississippi	70	69	71	1,961	2,172	-9.7	3,218	3,260	-1.3
Missouri	2	2	1	69	43	59.9	100	49	104.1
Montana	545	544	573	17,418	18,219	-4.4	27,924	29,235	-4.5
New Mexico	208	199	229	6,240	6,854	-9.0	10,132	10,549	-4.0
North Dakota	529	515	575	16,752	17,119	-2.1	26,856	26,606	0.9
Ohio	39	38	44	1,303	1,649	-21.0	2,184	2,730	-20.0
Oklahoma	s	s	s	2	1	70.9	2	1	100.0
<b>Pennsylvania total</b>	<b>796</b>	<b>776</b>	<b>723</b>	<b>25,605</b>	<b>25,158</b>	<b>1.8</b>	<b>40,950</b>	<b>39,333</b>	<b>4.1</b>
Anthracite (PA)	56	57	48	1,771	1,522	16.4	2,776	2,363	17.5
Bituminous (PA)	740	718	675	23,833	23,635	0.8	38,173	36,970	3.3
Tennessee	s	s	.	1	s	58.3	1	s	100.0
Texas	325	321	337	9,855	10,562	-6.7	16,665	17,609	-5.4
Utah	172	177	226	5,459	7,182	-24.0	9,194	11,690	-21.4
Virginia	235	235	228	7,248	6,737	7.6	11,695	10,766	8.6
<b>West Virginia total</b>	<b>1,750</b>	<b>1,744</b>	<b>1,633</b>	<b>55,490</b>	<b>53,122</b>	<b>4.5</b>	<b>87,428</b>	<b>81,402</b>	<b>7.4</b>
Northern (WV)	977	971	939	30,298	29,684	2.1	48,402	45,864	5.5
Southern (WV)	773	773	694	25,192	23,438	7.5	39,026	35,538	9.8
Wyoming	4,865	4,852	5,023	150,511	153,385	-1.9	246,162	244,895	0.5
<b>Appalachian total</b>	<b>3,354</b>	<b>3,320</b>	<b>3,107</b>	<b>106,015</b>	<b>101,655</b>	<b>4.3</b>	<b>168,012</b>	<b>156,523</b>	<b>7.3</b>
<b>Interior total</b>	<b>2,090</b>	<b>2,064</b>	<b>1,911</b>	<b>65,668</b>	<b>62,126</b>	<b>5.7</b>	<b>103,571</b>	<b>94,815</b>	<b>9.2</b>
<b>Western total</b>	<b>6,590</b>	<b>6,556</b>	<b>6,911</b>	<b>204,811</b>	<b>211,564</b>	<b>-3.2</b>	<b>333,946</b>	<b>337,171</b>	<b>-1.0</b>
<b>East of Mississippi River</b>	<b>5,110</b>	<b>5,055</b>	<b>4,673</b>	<b>161,560</b>	<b>152,987</b>	<b>5.6</b>	<b>254,493</b>	<b>233,367</b>	<b>9.1</b>
<b>West of Mississippi River</b>	<b>6,923</b>	<b>6,886</b>	<b>7,256</b>	<b>214,933</b>	<b>222,357</b>	<b>-3.3</b>	<b>351,036</b>	<b>355,142</b>	<b>-1.2</b>
Bituminous and lignite	11,977	11,883	11,881	374,722	373,822	0.2	602,753	586,147	2.8
Anthracite	56	57	48	1,771	1,522	16.4	2,776	2,363	17.5
<b>U.S. total</b>	<b>12,033</b>	<b>11,941</b>	<b>11,929</b>	<b>376,493</b>	<b>375,345</b>	<b>0.3</b>	<b>605,529</b>	<b>588,509</b>	<b>2.9</b>
Railroad cars loaded	69,773	69,176	69,300	2,159,054	2,147,303	0.5	3,496,606	3,393,615	3.0

Source: Energy Information Administration



# Weekly Electric Output

Volume 91 No. 33

**OUTPUT FOR WEEK ENDED - Aug 19, 2023**

**Aug 23, 2023**

The net available amount of electric energy distributed by the Total Electric Utility Industry\* for the week ended Saturday, **Aug 19, 2023** was **92,153** gigawatthours (GWh), according to the Edison Electric Institute. This is equivalent to **191** on the weekly electric output index.

**WEEKLY ELECTRIC OUTPUT BY GEOGRAPHIC DIVISION**

(48 CONTIGUOUS STATES)

	Week Ended August 19		52 Weeks Ended August 19	
	GWh Output	% Increase Over Corresponding Week of 2022	GWh Output	% Increase Over Corresponding Period of 2022
New England	2,371	0.2	111,391	-4.5
Mid-Atlantic	9,250	5.1	404,113	-4.0
Central Industrial	12,613	-1.9	636,984	-3.5
West Central	6,869	0.6	337,384	-1.1
Southeast	22,678	8.9	1,005,700	-2.8
South Central	21,593	15.3	844,766	2.0
Rocky Mountain	7,160	7.5	294,351	0.1
Pacific Northwest	2,993	3.6	161,541	1.0
Pacific Southwest	6,626	-1.6	271,812	1.0
Total United States	92,153	6.3	4,068,042	-1.4

**WEEKLY ELECTRIC OUTPUT IN PREVIOUS WEEKS--GWh**

Week Ended	2023	Week Ended	2022	% Inc. (23/22)	52 Weeks Ended	2023	% Inc. (23/22)
Jul 29	97,452	Jul 30	93,723	4.0	Jul 29	4,062,445	-1.4
Aug 05	95,336	Aug 06	96,094	-0.8	Aug 05	4,061,687	-1.6
Aug 12	92,749	Aug 13	91,862	1.0	Aug 12	4,062,574	-1.6
Aug 19	92,153	Aug 20	86,685	6.3	Aug 19	4,068,042	-1.4
<b>Aug 19</b>	<b>2,614,649</b>	<b>Aug 20</b>	<b>2,689,508</b>	<b>-2.8</b>	<b>YEAR TO DATE, FIRST 33 WEEKS</b>		

**WEEKLY ELECTRIC OUTPUT INDEX--TOTAL U.S.\***

SEASONALLY ADJUSTED 1982 = 100

Week Ended	2023	Week Ended	2022	Week Ended	2021
Jul 29	203	Jul 30	182	Jul 31	181
Aug 05	200	Aug 06	190	Aug 07	169
Aug 12	198	Aug 13	197	Aug 14	192
Aug 19	191	Aug 20	190	Aug 21	187

\* Excludes Alaska and Hawaii.

+ Includes investor-owned companies, cooperatives and government-owned utilities.

Copyright © 2023 Edison Electric Institute. All rights reserved.

## EEI WEEKLY ELECTRIC OUTPUT BY GEOGRAPHIC DIVISION (48 CONTIGUOUS STATES)

	Week Ended			NMA CUMULATIVE JANUARY WEEK ONE TO			52 Weeks Ended		
	19-Aug 2023 GWh Output	20-Aug 2022 GWh Output	% Increase Over Corresponding Week	19-Aug 2023 GWh Output	20-Aug 2022 GWh Output	% Increase Over Corresponding Week	19-Aug 2023 GWh Output	20-Aug 2022 GWh Output	% Increase Over Corresponding Week
<b>New England</b>	2,371	2,367	0.2%	<b>70,776</b>	<b>75,165</b>	<b>-5.8%</b>	111,391	116,642	-4.5%
<b>Mid-Atlantic</b>	9,250	8,803	5.1%	<b>258,283</b>	<b>273,634</b>	<b>-5.6%</b>	404,113	420,863	-4.0%
<b>Central Industrial</b>	12,613	12,861	-1.9%	<b>411,306</b>	<b>431,947</b>	<b>-4.8%</b>	636,984	660,155	-3.5%
<b>West Central</b>	6,869	6,827	0.6%	<b>216,096</b>	<b>220,547</b>	<b>-2.0%</b>	337,384	341,096	-1.1%
<b>Southeast</b>	22,678	20,817	8.9%	<b>646,197</b>	<b>677,050</b>	<b>-4.6%</b>	1,005,700	1,034,436	-2.8%
<b>South Central</b>	21,593	18,725	15.3%	<b>553,449</b>	<b>549,222</b>	<b>0.8%</b>	844,766	828,492	2.0%
<b>Rocky Mountain</b>	7,160	6,663	7.5%	<b>186,221</b>	<b>188,013</b>	<b>-1.0%</b>	294,351	294,018	0.1%
<b>Pacific Northwest</b>	2,993	2,890	3.6%	<b>103,434</b>	<b>103,253</b>	<b>0.2%</b>	161,541	160,007	1.0%
<b>Pacific Southwest</b>	6,626	6,732	-1.6%	<b>168,888</b>	<b>170,677</b>	<b>-1.0%</b>	271,812	269,027	1.0%
<b>Total United States <sup>1/</sup></b>	<u>92,153</u>	<u>86,685</u>	6.3%	<u><b>2,614,649</b></u>	<u><b>2,689,508</b></u>	<b>-2.8%</b>	<u>4,068,042</u>	<u>4,124,736</u>	-1.4%
<b>Coal Regions Only <sup>2/</sup></b>	80,163	74,696	7.3%	2,271,551	2,340,413	-2.9%	3,523,298	3,579,060	-1.6%

**Notes:** EEI output data are an estimate of electricity load made available for distribution derived as weekly net generation + purchases from non-utilities + net imports - exports - sales for resale. It is not meant to be a measure of electricity generation for the U.S. EEI survey data represent the majority of national distribution (large utilities, large government power projects, some independent and large municipal power projects). The remaining segment of the industry (smaller producers) is estimated. Non-utility generation is captured via direct sales to utilities. **Note: the year 2022 has an extra Saturday.**

<sup>1/</sup> Excludes Alaska and Hawaii

<sup>2/</sup> Excludes New England and Pacific regions

SOURCE: Edison Electric Institute (EEI), *Weekly Electric Output Report*.

AMERICAN IRON AND STEEL INSTITUTE  
 25 Massachusetts Avenue, NW, Suite 800  
 Washington, D.C. 20001

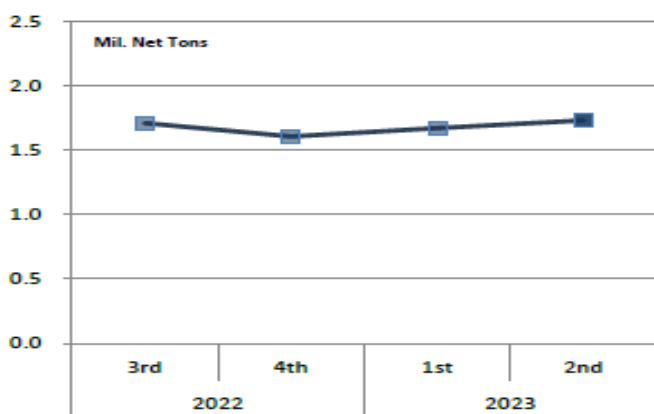
August 21, 2023

**ESTIMATED WEEKLY RAW STEEL \* PRODUCTION**

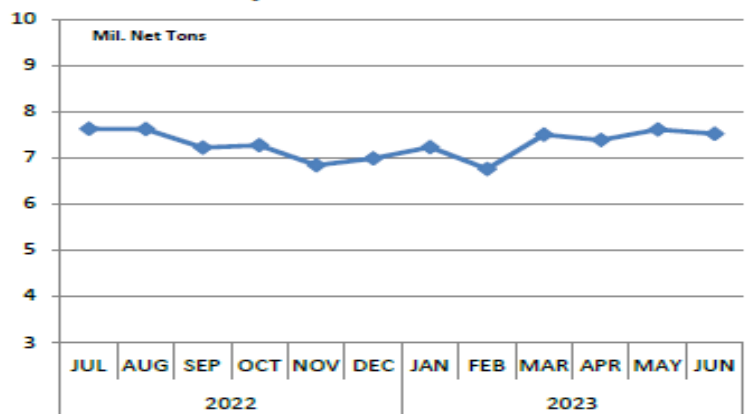
<u>Period</u>	<u>Thousand Net Tons</u>	<u>Percent Change from Previous Period</u>	<u>Percent Capability Utilization**</u>	<u>Production by District</u>		
				<u>Week Ending Aug 19</u>	<u>Aug 12</u>	
<b><u>Week Ending</u></b>				North East	127	132
				Great Lakes	578	568
August 19, 2023	1,756	1.1	77.2	Midwest	222	217
August 19, 2022	1,719	2.2	78.0	Southern	761	749
August 12, 2023	1,737	0.6	76.4	Western	68	71
				<b>Total</b>	<b>1,756</b>	<b>1,737</b>
<b><u>Year-to-Date +</u></b>						
August 19, 2023	56,363	-2.0	75.9			
August 19, 2022	57,520	-	79.7			

\*Raw steel production tonnage included in this report is estimated based on a sampling of steel producers (50% of domestic producers). Therefore, this report should be used primarily to assess production trends. The AISI production report "AIS 7," produced monthly and available by subscription, provides a more accurate summary of steel production based on data supplied by companies representing approximately 75% of U.S. production capacity plus includes revisions for previous months.

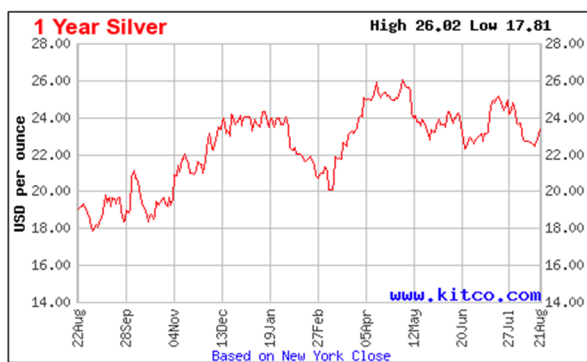
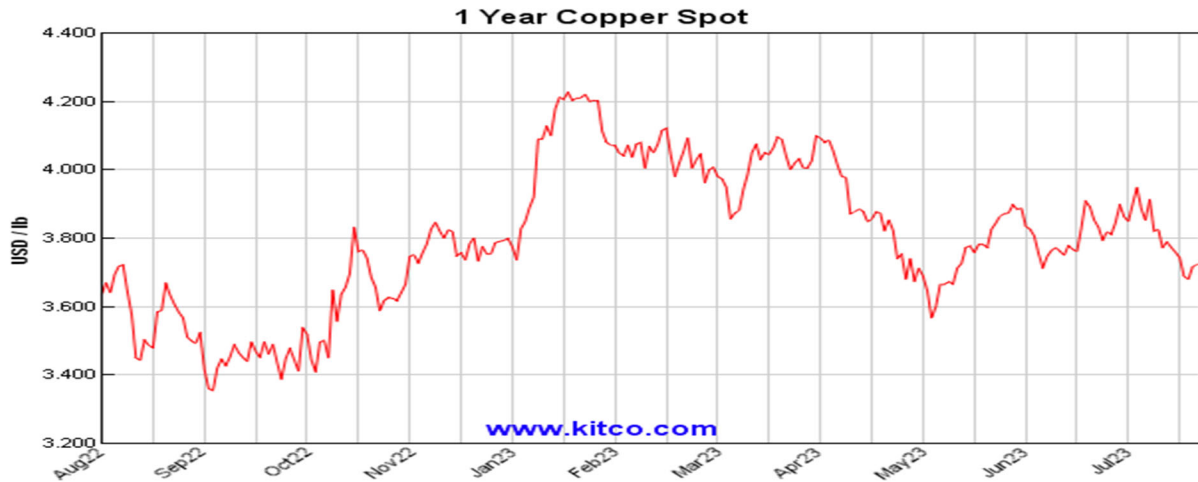
**Average Weekly Raw Steel Production**



**Monthly Raw Steel Production**



\*Steel in the first solid state after melting suitable for further processing or sale, including ingots, steel for castings and strand or pressure cast blooms, slabs or other product forms. \*\* Based on tonnage capability to produce raw steel for a sustained full order book.



Source: Kitco website - [www.kitco.com/connecting.html](http://www.kitco.com/connecting.html)

**U.S. Rail Traffic<sup>1</sup>**  
 Week 33, 2023 – Ended August 19, 2023

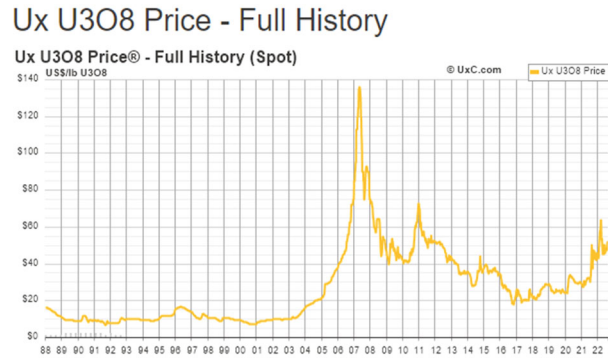
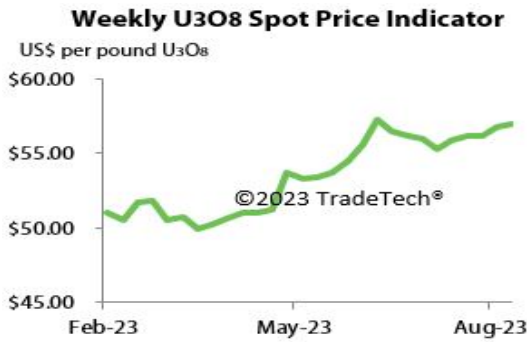
	This Week		Year-To-Date		
	Cars	vs 2022	Cumulative	Avg/wk <sup>2</sup>	vs 2022
<b>Total Carloads</b>	<b>228,972</b>	<b>-0.6%</b>	<b>7,394,978</b>	<b>224,090</b>	<b>0.2%</b>
Chemicals	31,602	-0.3%	1,026,205	31,097	-3.7%
Coal	69,773	2.2%	2,159,035	65,425	0.5%
Farm Products excl. Grain, and Food	15,638	-6.1%	532,133	16,125	0.8%
Forest Products	7,683	-14.4%	268,115	8,125	-7.5%
Grain	15,796	-18.3%	605,619	18,352	-12.5%
Metallic Ores and Metals	20,469	-2.8%	680,765	20,629	4.6%
Motor Vehicles and Parts	16,293	16.7%	485,749	14,720	13.5%
Nonmetallic Minerals	34,013	2.3%	1,047,491	31,742	4.1%
Petroleum and Petroleum Products	9,420	9.0%	308,073	9,336	9.5%
Other	8,285	-1.4%	281,793	8,539	-2.0%
<b>Total Intermodal Units</b>	<b>249,881</b>	<b>-4.6%</b>	<b>7,828,854</b>	<b>237,238</b>	<b>-9.2%</b>
<b>Total Traffic</b>	<b>478,853</b>	<b>-2.7%</b>	<b>15,223,832</b>	<b>461,328</b>	<b>-4.9%</b>

<sup>1</sup> Excludes U.S. operations of CPKC, CN and GMXT.

<sup>2</sup> Average per week figures may not sum to totals as a result of independent rounding.

Source: AAR website - <https://www.aar.org/Pages/NEWS-and-EVENTS.aspx>

### Trade Tech's and UX's Uranium Price Indicators



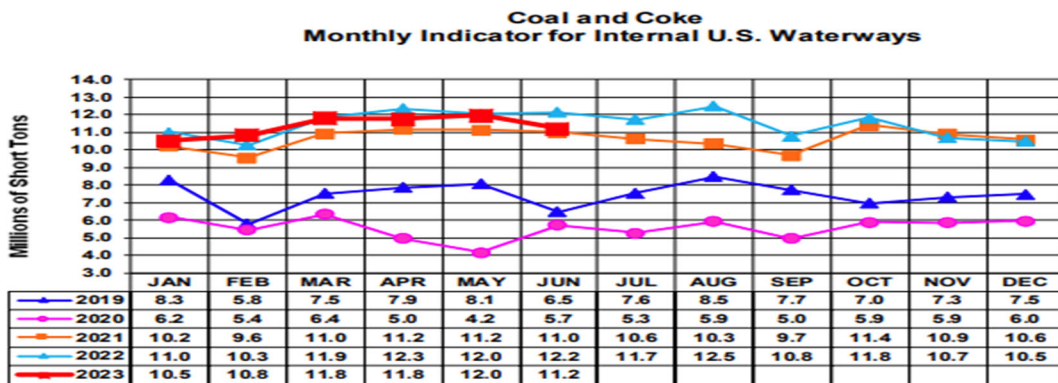
Sources: Trade Tech, Uranium Info Website – [www.uranium.info](http://www.uranium.info) ; Source: Ux Consulting Co., LLC – <http://www.uxc.com>

### Coal stocks and average number of days of burn for non-lignite coal by region (electric power sector)

Zone	Coal	May 2023		May 2022		% Change of Stocks	April 2023		% Change of Stocks
		Stocks (1000 tons)	Days of Burn	Stocks (1000 tons)	Days of Burn		Stocks (1000 tons)	Days of Burn	
Northeast	Bituminous	2,850	365	1,384	270	105.9%	2,823	365	1.0%
	Subbituminous								
South	Bituminous	20,896	111	12,627	66	65.5%	19,487	110	7.2%
	Subbituminous	5,969	80	3,503	45	70.4%	5,616	89	6.3%
Midwest	Bituminous	12,076	103	8,091	75	49.2%	10,958	105	10.2%
	Subbituminous	32,457	136	22,185	107	46.3%	31,626	134	2.6%
West	Bituminous	3,000	140	3,143	147	-4.6%	2,672	136	12.3%
	Subbituminous	30,704	133	20,688	92	48.4%	27,759	127	10.6%
U.S. Total	Bituminous	38,822	118	25,246	76	53.8%	35,939	115	8.0%
	Subbituminous	69,131	125	46,377	89	49.1%	65,000	124	6.4%

Source: U.S. Energy Information Administration

Source: Energy Information Administration, Electric Monthly Update



For the Internal U.S. Waterway Monthly Indicators, estimates for the most recent month are based on lock performance management data. The estimates will be superseded by actual data as it becomes available.

Source: Waterborne Commerce Statistics Center

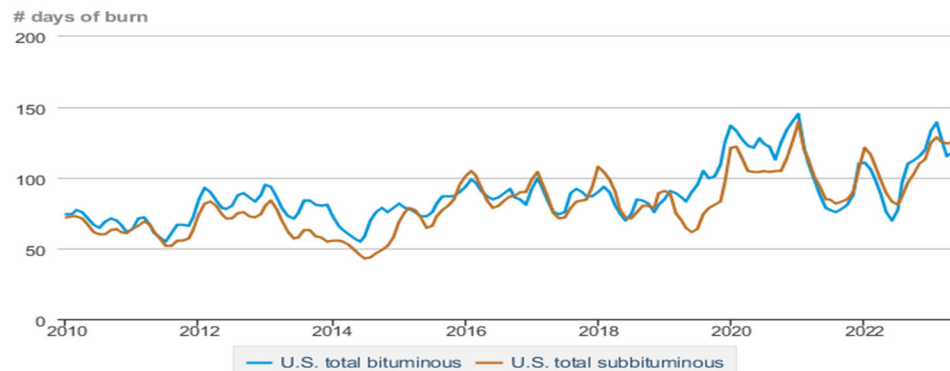
Average weekly coal commodity spot prices  
dollars per short ton

	Week ending					Week ago change
	07/21/23	07/28/23	08/04/23	08/11/23	08/18/23	
Central Appalachia 12,500 Btu, 1.2 SO <sub>2</sub>	\$62.25	\$62.25	\$66.25	\$66.25	\$70.00	\$3.75
Northern Appalachia 13,000 Btu, < 3.0 SO <sub>2</sub>	\$52.60	\$52.60	\$52.50	\$52.50	\$52.50	\$0.00
Illinois Basin 11,800 Btu, 5.0 SO <sub>2</sub>	\$50.00	\$50.00	\$50.00	\$50.00	\$50.00	\$0.00
Powder River Basin 8,800 Btu, 0.8 SO <sub>2</sub>	\$14.30	\$14.30	\$14.30	\$14.30	\$14.30	\$0.00
Uinta Basin 11,700 Btu, 0.8 SO <sub>2</sub>	\$32.50	\$32.50	\$32.50	\$32.50	\$32.50	\$0.00

Data source: With permission, S&P Global

Source: Energy Information Administration (with permission from S&P Global), *Coal Market Report*

Days of burn by non-lignite coal rank, January 2010 - May 2023



eia Data source: U.S. Energy Information Administration

Source: Energy Information Administration, *Electricity Monthly Update Report*

Temperature – heating & cooling degree days (week ending Aug 10)

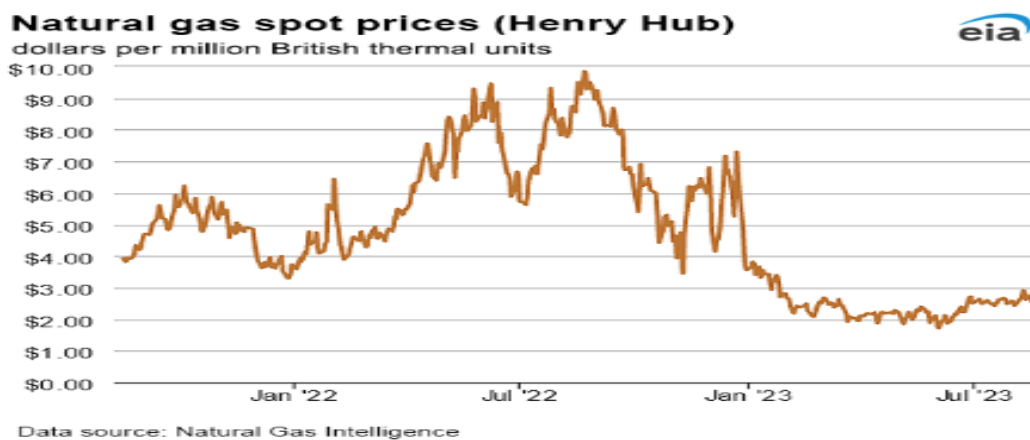
Region	HDDs			CDDs		
	Current total	Deviation from normal	Deviation from last year	Current total	Deviation from normal	Deviation from last year
New England	1	-1	1	36	-6	-60
Middle Atlantic	0	-2	0	51	-5	-49
E N Central	1	-4	0	44	-9	-30
W N Central	1	-2	0	57	-9	-17
South Atlantic	0	0	0	98	3	-13
E S Central	0	0	0	93	1	-9
W S Central	0	0	0	156	32	16
Mountain	1	-2	1	75	3	-1
Pacific	0	-2	0	50	4	-15
United States	1	-2	0	74	2	-20

Data source: National Oceanic and Atmospheric Administration  
Note: HDDs=heating degree days; CDDs=cooling degree days

Source: Energy Information Administration, *Natural Gas Weekly Update*.

U.S. Production of Selected Mineral Commodities	2023 Year to Date - 1st Quarter	2022 Year to Date - 1st Quarter	Percent Change
Aluminum, secondary (000 Mt.)	223.0	215.0	4%
Cement (Mil. Mt.)	18.4	19.0	-3%
Copper (000 Mt.)	291.0	308.0	-6%
Gold (Mt.)	40.4	40.2	0%
Gypsum (Mil. Mt.)	4.7	4.3	9%
Iron Ore (Mil. Mt.)	10.1	8.7	16%
Lead (000 Mt.)	67.2	68.6	-2%
Molybdenum (000 Mt.)	8.1	8.8	-8%
Palladium (Mt.)	2.4	2.9	-17%
Phosphate rock (Mil. Mt.)	4.6	4.6	0%
Platinum (Mt.)	0.7	0.9	-22%
Sand & gravel, construction (Mil. Mt.)	160.0	175.0	-9%
Silver (Mt.)	269.0	258.0	4%
Soda ash (Mil. Mt.)	2.6	2.8	-7%
Stone, crushed (Mil. Mt.)	300.0	295.0	2%
Zinc (000 Mt.)	178.0	180.0	-1%

Source: U.S. Geological Survey, Mineral Industry Surveys. Percent change based on USGS rounded numbers. 2022 data are preliminary estimates. W - withheld, N/A - not available



Source: Energy Information Administration, *Natural Gas Weekly*.

**Coal stocks and average number of days of burn for non-lignite coal by region (electric power sector)**

Zone	Coal	May 2023		May 2022		% Change of Stocks	April 2023		% Change of Stocks
		Stocks (1000 tons)	Days of Burn	Stocks (1000 tons)	Days of Burn		Stocks (1000 tons)	Days of Burn	
Northeast	Bituminous	2,850	365	1,384	270	105.9%	2,823	365	1.0%
	Subbituminous								
South	Bituminous	20,896	111	12,627	66	65.5%	19,487	110	7.2%
	Subbituminous	5,969	80	3,503	45	70.4%	5,616	89	6.3%
Midwest	Bituminous	12,076	103	8,091	75	49.2%	10,958	105	10.2%
	Subbituminous	32,457	136	22,185	107	46.3%	31,626	134	2.6%
West	Bituminous	3,000	140	3,143	147	-4.6%	2,672	136	12.3%
	Subbituminous	30,704	133	20,688	92	48.4%	27,759	127	10.6%
U.S. Total	Bituminous	38,822	118	25,246	76	53.8%	35,939	115	8.0%
	Subbituminous	69,131	125	46,377	89	49.1%	65,000	124	6.4%

Source: U.S. Energy Information Administration

Source: Energy Information Administration, *Electricity Monthly Update*

### Mining-Related Commodity Prices

Commodity Price - Snapshot		
Metals Prices	Date	Price
Cobalt Spot Price (\$/lb)	8/22/23	\$15.15
Copper Spot Price (\$/lb)	8/23/23	\$3.80
Gold Spot Price (\$/ounce)	8/23/23	\$1,918.10
Lead Spot Price (\$/lb)	8/22/23	\$0.98
Lithium Spot Price (\$/kg)	8/23/23	\$29.83
Molybdenum Spot Price (\$/kg)	8/22/23	\$58.75
Nickel Spot Price (\$/lb)	8/22/23	\$9.19
Silver Spot Price (\$/ounce)	8/23/23	\$24.34
Steel HRC Price (\$/mt)	8/23/23	\$719.28
Steel Rebar Price (\$/mt)	8/23/23	\$512.16
Zinc Spot Price (\$/lb)	8/23/23	\$1.07
Energy Prices	Date	Price
Coal Price - Australian Premium Coking Coal Futures (\$/mt)	8/22/23	\$256.00
Coal Spot Price - Central Appalachian (\$/st)	8/18/23	\$70.00
Coal Spot Price - Newcastle futures (\$/mt)	8/22/23	\$149.88
Coal Spot Price - Rotterdam futures (\$/mt)	8/22/23	\$118.80
Natural Gas Spot Price - Henry Hub (\$/mmbtu)	8/16/23	\$2.55
Uranium Spot Price (\$/lb)	8/21/23	\$58.25

Sources: publically available data from eia.gov, dailymetalprice.com, tradingeconomics.com, sgxgroup.com, investing.com

### EIA Working Natural Gas Underground Storage

Region	Stocks billion cubic feet (Bcf)		
	2023-08-11	2023-08-04	change
East	717	700	17
Midwest	812	793	19
Mountain	202	196	6
Pacific	240	233	7
South Central	1,093	1,108	-15
Total	3,065	3,030	35

Data source: U.S. Energy Information Administration Form EIA-912, *Weekly Underground Natural Gas Storage Report*  
 Note: Totals may not equal sum of components because of independent rounding.

Source: Energy Information Administration, *Natural Gas Weekly Update*

### EIA Oil and Natural Gas Rig Productivity

Region	NEW-WELL PRODUCTION PER RIG BY REGION			PRODUCTION BY REGION			DUC WELLS BY REGION		
	New-well oil production per rig barrels/day			New-well gas production per rig thousand cubic feet/day					
	August 2023	September 2023	change	August 2023	September 2023	change			
Anadarko	686	693	7	4,132	4,235	103			
Appalachia	193	193	-	23,734	23,770	36			
Bakken	1,686	1,694	8	2,618	2,639	21			
Eagle Ford	1,439	1,453	14	5,896	5,955	59			
Haynesville	19	19	-	11,484	11,541	57			
Niobrara	1,437	1,444	7	4,014	4,074	60			
Permian	1,073	1,079	6	2,059	2,067	8			
Rig-weighted average	970	981	11	5,260	5,264	4			

Source: Energy Information Administration, *Drilling Productivity Report*

### USGS Cobalt – U.S. Trade, Reported Stocks and Listed Prices

Cobalt - April 2023	May-23	Year to Date
U.S. Imports for Consumption - Metals (mt)	671	3,330
U.S. Exports of Cobalt Materials - Cobalt Content (mt)	522	2,230
Reported Stocks of Cobalt Metal (mt)	U.S. Govt	LME
	302	96
Listed Prices by Type (\$/lb): US Spot & LME Cash Avg.	14.44	15.07

Source: USGS, Mineral Industry Survey, Cobalt in May, July 2023

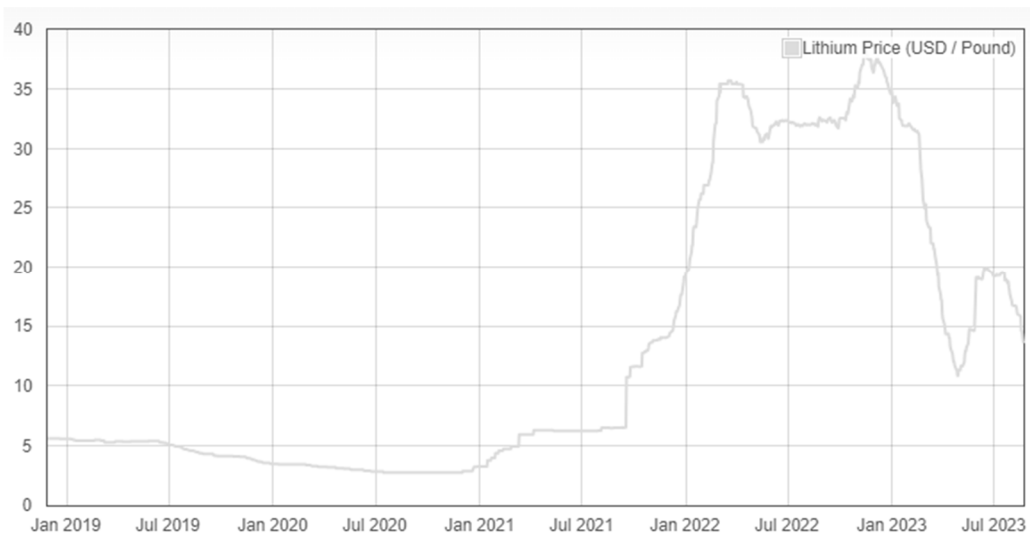
### Cobalt and Lithium Prices

#### Cobalt Prices (US\$/pound):



Source: Dailymetalprice.com - <https://www.dailymetalprice.com/metalpricecharts.php?c=co&u=lb&d=0>

#### Lithium Prices (US\$/pound):



Source: Dailymetalprice.com - <https://www.dailymetalprice.com/metalpricecharts.php>