



NATIONAL MINING ASSOCIATION

WEEKLY STATISTICAL SUMMARY

October 6, 2023 Edition
(Data for Week Ending September 30, 2023)

Prepared by
National Mining Association

101 Constitution Avenue NW, Suite 500 East
Washington, DC 20001
(202) 463-2600
www.nma.org



NMA WEEKLY STATISTICAL SUMMARY

Vol. 61, No. 39 | Dated 10/06/23

PRODUCTION, CONSUMPTION & TRADE

	Week Ended			* Cumulative Jan 1 to		
	09/30/23	09/24/22	% Chg	09/30/23	09/30/22	% Chg
EIA Coal Production (000 Tons):						
Week Ended/Year to Date	11,737	12,169	-3.6%	442,766	448,397	-1.3%
52 Weeks Ended	598,688	592,569	1.0%			
<i>Note: the year 2022 has an extra Saturday</i>						
AAR Coal Rail Cars Loaded:	68,365	70,697	-3.3%	2,571,323	2,573,480	-0.1%
Coal Production	Sep 23/22		% Chg	Jan - Sep 23/22		% Chg
Month Ended - September	50,203	51,574	-2.7%	442,766	448,397	-1.3%

U.S. Department of Commerce Coal Trade (000 Tons)

	August 23/22		% Chg	Jan - August 23/22		% Chg
Coal Exports:						
Metallurgical	5,133	3,496	46.8%	34,237	30,859	10.9%
Steam Bit. *	3,760	3,447	9.1%	30,052	25,652	17.2%
Lignite	6	6	0.0%	69	54	27.8%
Anthracite	<u>104</u>	<u>14</u>	642.9%	<u>549</u>	<u>307</u>	78.8%
Total	9,003	6,963	29.3%	64,907	56,872	14.1%
Coal Imports:	326	660	-50.6%	2,360	3,618	-34.8%

	Week Ended			Cumulative Week 1 to		
	09/30/23	10/01/22	% Chg	09/30/23	10/01/22	% Chg
EEl Electric Total Output (Mil. Kwh)	77,239	70,819	9.1%	3,122,132	3,177,414	-1.7%
EEl Coal Region Output (Mil. Kwh)	67,635	60,547	11.7%	2,716,460	2,761,123	-1.6%
AISI Raw Steel Output (000 Tons)	1,722	1,684	2.3%	66,770	67,683	-1.3%

EIA AVERAGE COAL & NATURAL GAS SPOT PRICES

Dollars Per Short Ton

Average Coal Spot Prices (\$/Short Ton)	Week Ending			Natural Gas Spot Prices (\$/MMBtu)	
	09/29/23	09/22/23	% Chg	Wed.	09/27/23
Central App, 12,500 Btu, 1.2 SO ₂	\$72.15	\$70.00	3.1%	Henry Hub	2.71
Northern App, 13,000 Btu, < 3.0 SO ₂	53.00	54.00	-1.9%	New York	1.28
Illinois Basin, 11,800, 5.0 SO ₂	47.75	49.00	-2.6%	Chicago	2.27
Powder River Basin, 8,800 Btu 0.8 SO ₂	14.20	14.25	-0.4%	Cal.Comp.Avg.	2.59
Uinta Basin, 11,700 Btu, 0.8 SO ₂	32.05	32.20	-0.5%		

Coal exports and Imports are "as reported" (not revised); *Steam excludes lignite & anthracite. All data in this report are preliminary and subject to revision. r/ revised.

Sources: EIA; Edison Electric Institute; American Iron & Steel Institute; Association of American Railroads; Dept. of Commerce; S&P Global; NGI's Daily Gas Price Index

EIA Estimated Weekly U.S. Coal Production Overview									
Coal-Producing Region & State (thousand short tons)	Week Ended			Year to Date			52 Weeks Ended		
	9/30/2023 (week 39)	9/23/2023 (week 38)	9/24/2022 (week 39)	9/30/2023	9/30/2022	% Change	9/30/2023	9/24/2022	% Change
Alabama	233	235	222	8,674	7,894	9.9	11,426	9,804	16.5
Alaska	20	20	19	784	721	8.8	1,093	990	10.4
Colorado	242	246	272	9,013	9,832	-8.3	12,202	13,271	-8.1
Illinois	761	764	726	29,677	28,624	3.7	39,213	36,294	8.0
Indiana	529	529	476	19,628	17,289	13.5	26,310	22,119	18.9
Kentucky total	574	575	561	22,308	21,352	4.5	29,902	28,143	6.3
Eastern (KY)	255	254	237	9,774	8,949	9.2	13,070	11,684	11.9
Western (KY)	320	321	323	12,534	12,403	1.1	16,831	16,459	2.3
Louisiana	7	7	6	224	226	-0.7	311	300	3.7
Maryland	29	29	29	1,023	1,080	-5.3	1,424	1,369	4.0
Mississippi	61	62	72	2,024	2,604	-22.3	2,848	3,294	-13.5
Missouri	2	2	1	94	50	88.2	119	56	112.5
Montana	551	558	585	21,480	21,731	-1.2	28,471	29,116	-2.2
New Mexico	184	179	234	6,843	8,258	-17.1	9,330	11,011	-15.3
North Dakota	510	503	586	18,891	20,637	-8.5	25,474	26,759	-4.8
Ohio	38	38	45	1,446	1,921	-24.7	2,055	2,664	-22.9
Oklahoma	s	s	s	1	1	11.3	2	1	100.0
Pennsylvania total	790	782	738	31,347	29,587	5.9	42,258	39,479	7.0
Anthracite (PA)	53	55	49	2,036	1,817	12.1	2,746	2,421	13.4
Bituminous (PA)	737	727	689	29,311	27,771	5.5	39,512	37,058	6.6
Tennessee	s	s	.	1	s	4.8	1	s	100.0
Texas	308	309	344	10,811	12,628	-14.4	15,553	17,438	-10.8
Utah	164	170	230	5,754	8,565	-32.8	8,104	11,617	-30.2
Virginia	236	239	232	8,789	8,196	7.2	11,858	10,886	8.9
West Virginia total	1,704	1,724	1,665	66,628	63,056	5.7	88,541	82,642	7.1
Northern (WV)	937	945	958	35,901	35,434	1.3	48,249	46,820	3.1
Southern (WV)	767	779	708	30,727	27,621	11.2	40,291	35,822	12.5
Wyoming	4,794	4,854	5,124	177,326	184,143	-3.7	242,192	245,316	-1.3
Appalachian total	3,285	3,301	3,170	127,681	120,684	5.8	170,634	158,529	7.6
Interior total	1,988	1,993	1,949	74,994	73,826	1.6	101,187	95,961	5.4
Western total	6,464	6,530	7,050	240,091	253,887	-5.4	326,867	338,080	-3.3
East of Mississippi River	4,956	4,976	4,767	191,545	181,605	5.5	255,836	236,694	8.1
West of Mississippi River	6,781	6,848	7,402	251,222	266,793	-5.8	342,852	355,875	-3.7
Bituminous and lignite	11,684	11,769	12,120	440,730	446,581	-1.3	595,941	590,147	1.0
Anthracite	53	55	49	2,036	1,817	12.1	2,746	2,421	13.4
U.S. total	11,737	11,824	12,169	442,766	448,397	-1.3	598,688	592,569	1.0
Railroad cars loaded	68,365	68,846	70,697	2,571,323	2,573,480	-0.1	3,482,338	3,412,144	2.1

Source: Energy Information Administration



Weekly Electric Output

Volume 91 No. 39

OUTPUT FOR WEEK ENDED - Sep 30, 2023

Oct 04, 2023

The net available amount of electric energy distributed by the Total Electric Utility Industry* for the week ended Saturday, **Sep 30, 2023** was **77,239** gigawatthours (GWh), according to the Edison Electric Institute. This is equivalent to **184** on the weekly electric output index.

WEEKLY ELECTRIC OUTPUT BY GEOGRAPHIC DIVISION

(48 CONTIGUOUS STATES)

	Week Ended September 30		52 Weeks Ended September 30	
	GWh Output	% Increase Over Corresponding Week of 2022	GWh Output	% Increase Over Corresponding Period of 2022
New England	1,902	0.1	111,271	-4.2
Mid-Atlantic	6,825	1.6	403,850	-3.8
Central Industrial	11,328	9.2	638,127	-2.8
West Central	6,427	13.2	339,475	-0.2
Southeast	18,954	13.3	1,011,556	-2.0
South Central	18,518	21.2	860,352	3.7
Rocky Mountain	5,583	-3.2	294,138	0.0
Pacific Northwest	2,540	0.4	161,128	0.5
Pacific Southwest	5,162	-11.6	267,723	-1.7
Total United States	77,239	9.1	4,087,619	-0.8

WEEKLY ELECTRIC OUTPUT IN PREVIOUS WEEKS--GWh

Week Ended	2023	Week Ended	2022	% Inc. (23/22)	52 Weeks Ended	2023	% Inc. (23/22)
Sep 09	90,200	Sep 10	83,200	8.4	Sep 09	4,082,083	-1.1
Sep 16	80,267	Sep 17	78,471	2.3	Sep 16	4,083,879	-0.9
Sep 23	76,650	Sep 24	79,329	-3.4	Sep 23	4,081,200	-1.1
Sep 30	77,239	Oct 01	70,819	9.1	Sep 30	4,087,620	-0.8
Sep 30	3,122,132	Oct 01	3,177,414	-1.7	YEAR TO DATE, FIRST 39 WEEKS		

WEEKLY ELECTRIC OUTPUT INDEX--TOTAL U.S.*

SEASONALLY ADJUSTED 1982 = 100

Week Ended	2023	Week Ended	2022	Week Ended	2021
Sep 09	197	Sep 10	194	Sep 11	177
Sep 16	177	Sep 17	187	Sep 18	184
Sep 23	171	Sep 24	199	Sep 25	178
Sep 30	184	Oct 01	177	Oct 02	178

* Excludes Alaska and Hawaii.

+ Includes investor-owned companies, cooperatives and government-owned utilities.

Copyright © 2023 Edison Electric Institute. All rights reserved.

EEI WEEKLY ELECTRIC OUTPUT BY GEOGRAPHIC DIVISION (48 CONTIGUOUS STATES)

	Week Ended			NMA CUMULATIVE JANUARY WEEK ONE TO			52 Weeks Ended		
	30-Sep	1-Oct	% Increase Over Corresponding Week	30-Sep	1-Oct	% Increase Over Corresponding Week	30-Sep	1-Oct	% Increase Over Corresponding Week
	2023 GWh Output	2022 GWh Output		2023 GWh Output	2022 GWh Output		2023 GWh Output	2022 GWh Output	
New England	1,902	1,899	0.2%	84,011	88,519	-5.1%	111,271	116,113	-4.2%
Mid-Atlantic	6,825	6,717	1.6%	307,678	323,293	-4.8%	403,850	419,736	-3.8%
Central Industrial	11,328	10,376	9.2%	485,573	505,071	-3.9%	638,127	656,674	-2.8%
West Central	6,427	5,677	13.2%	257,937	260,297	-0.9%	339,475	340,269	-0.2%
Southeast	18,954	16,726	13.3%	772,458	797,455	-3.1%	1,011,556	1,032,215	-2.0%
South Central	18,518	15,285	21.2%	670,149	650,335	3.0%	860,352	829,649	3.7%
Rocky Mountain	5,583	5,766	-3.2%	222,666	224,672	-0.9%	294,138	294,211	0.0%
Pacific Northwest	2,540	2,531	0.4%	118,717	118,948	-0.2%	161,128	160,323	0.5%
Pacific Southwest	5,162	5,842	-11.6%	202,944	208,823	-2.8%	267,723	272,389	-1.7%
Total United States ^{1/}	<u>77,239</u>	<u>70,819</u>	9.1%	<u>3,122,132</u>	<u>3,177,413</u>	-1.7%	<u>4,087,620</u>	<u>4,121,579</u>	-0.8%
Coal Regions Only ^{2/}	67,635	60,547	11.7%	2,716,460	2,761,123	-1.6%	3,547,498	3,572,754	-0.7%

Notes: EEI output data are an estimate of electricity load made available for distribution derived as weekly net generation + purchases from non-utilities + net imports - exports - sales for resale. It is not meant to be a measure of electricity generation for the U.S. EEI survey data represent the majority of national distribution (large utilities, large government power projects, some independent and large municipal power projects). The remaining segment of the industry (smaller producers) is estimated. Non-utility generation is captured via direct sales to utilities. **Note: the year 2022 has an extra Saturday.**

^{1/} Excludes Alaska and Hawaii

^{2/} Excludes New England and Pacific regions

SOURCE: Edison Electric Institute (EEI), *Weekly Electric Output Report*.

AMERICAN IRON AND STEEL INSTITUTE
 25 Massachusetts Avenue, NW, Suite 800
 Washington, D.C. 20001

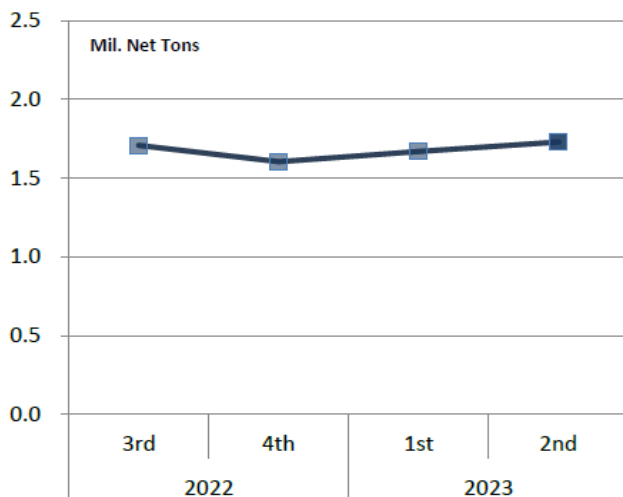
October 2, 2023

ESTIMATED WEEKLY RAW STEEL * PRODUCTION

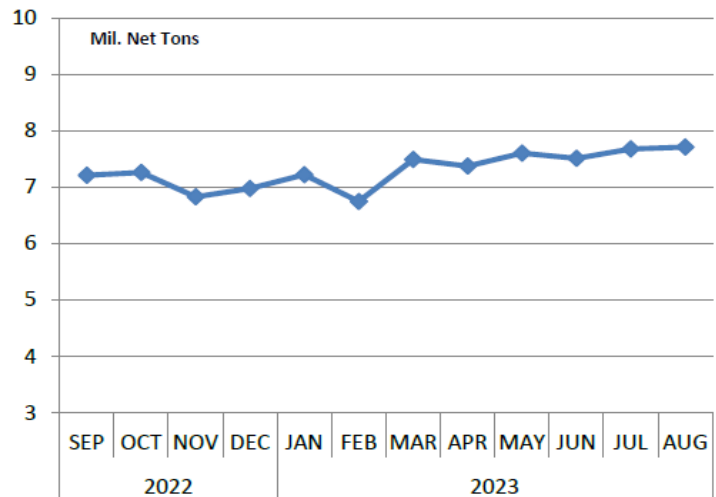
<u>Period</u>	<u>Thousand Net Tons</u>	<u>Percent Change from Previous Period</u>	<u>Percent Capability Utilization**</u>	<u>Production by District</u>		
				<u>Week Ending</u>		
				<u>Sep 30</u>	<u>Sep 23</u>	
<u>Week Ending</u>				North East	134	126
				Great Lakes	568	575
Sep 30, 2023	1,722	-0.7	75.7	Midwest	206	220
Sep 30, 2022	1,684	2.3	76.4	Southern	746	744
Sep 23, 2023	1,735	0.1	76.3	Western	68	70
				Total	1,722	1,735
<u>Year-to-Date +</u>						
Sep 30, 2023	66,770	-1.3	76.0			
Sep 30, 2022	67,683	-	79.4			

*Raw steel production tonnage included in this report is estimated based on a sampling of steel producers (50% of domestic producers). Therefore, this report should be used primarily to assess production trends. The AISI production report "AIS 7," produced monthly and available by subscription, provides a more accurate summary of steel production based on data supplied by companies representing approximately 75% of U.S. production capacity plus includes revisions for previous months.

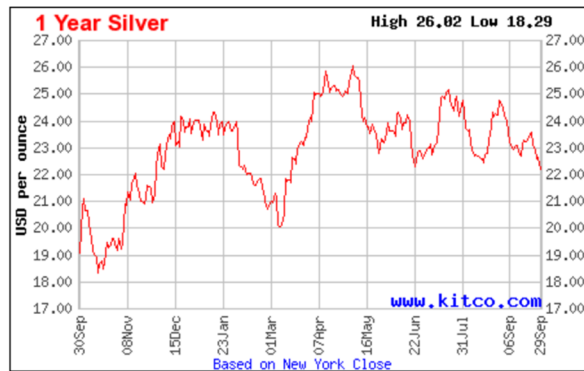
Average Weekly Raw Steel Production



Monthly Raw Steel Production



*Steel in the first solid state after melting suitable for further processing or sale, including ingots, steel for castings and strand or pressure cast blooms, slabs or other product forms. ** Based on tonnage capability to produce raw steel for a sustained full order book.



Source: Kitco website - www.kitco.com/connecting.html

U.S. Rail Traffic¹
Week 39, 2023 – Ended September 30, 2023

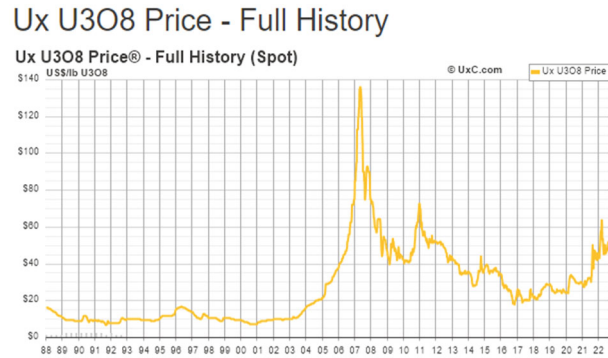
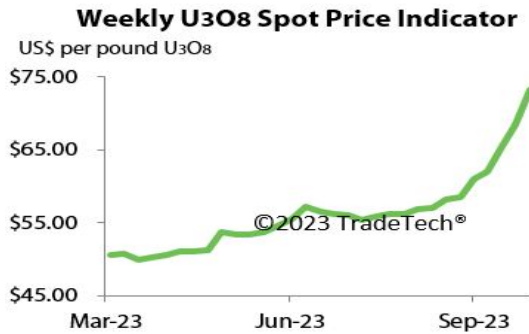
	This Week		Year-To-Date		
	Cars	vs 2022	Cumulative	Avg/wk ²	vs 2022
Total Carloads	235,988	3.7%	8,774,830	224,996	0.3%
Chemicals	31,750	7.3%	1,215,546	31,168	-2.6%
Coal	68,365	0.7%	2,571,307	65,931	-0.1%
Farm Products excl. Grain, and Food	16,533	5.6%	628,650	16,119	1.1%
Forest Products	8,395	0.4%	317,368	8,138	-7.0%
Grain	18,501	-11.6%	701,385	17,984	-12.7%
Metallic Ores and Metals	23,142	13.1%	811,804	20,815	5.1%
Motor Vehicles and Parts	15,973	9.6%	581,139	14,901	13.7%
Nonmetallic Minerals	33,808	2.9%	1,245,398	31,933	3.4%
Petroleum and Petroleum Products	10,169	9.9%	368,253	9,442	10.5%
Other	9,352	17.0%	333,980	8,564	-1.5%
Total Intermodal Units	264,166	2.0%	9,329,334	239,214	-8.2%
Total Traffic	500,154	2.8%	18,104,164	464,209	-4.3%

¹ Excludes U.S. operations of CPKC, CN and GMXT.

² Average per week figures may not sum to totals as a result of independent rounding.

Source: AAR website - <https://www.aar.org/Pages/NEWS-and-EVENTS.aspx>

Trade Tech's and UX's Uranium Price Indicators



Sources: Trade Tech, Uranium Info Website – www.uranium.info ; Source: Ux Consulting Co., LLC – <http://www.uxc.com>

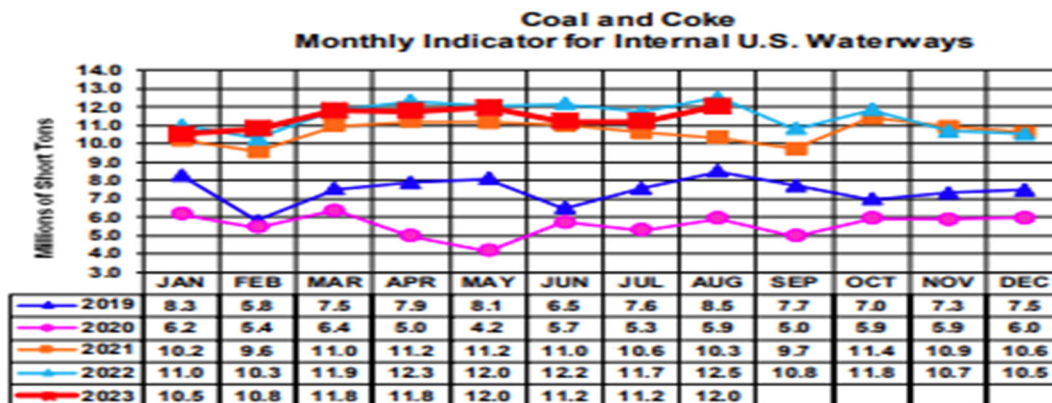
Coal stocks and average number of days of burn for non-lignite coal by region (electric power sector)

Zone	Coal	July 2023		July 2022		% Change of Stocks	June 2023		% Change of Stocks
		Stocks (1000 tons)	Days of Burn	Stocks (1000 tons)	Days of Burn		Stocks (1000 tons)	Days of Burn	
Northeast	Bituminous	2,715	362	1,638	365	65.8%	3,046	365	-10.9%
	Subbituminous								
South	Bituminous	18,294	140	10,833	56	68.9%	20,922	128	-12.6%
	Subbituminous	5,793	90	3,254	38	78.0%	6,123	79	-5.4%
Midwest	Bituminous	12,731	129	7,317	73	74.0%	12,680	117	0.4%
	Subbituminous	30,679	151	17,327	102	77.1%	32,099	146	-4.4%
West	Bituminous	3,043	148	3,221	159	-5.5%	3,238	152	-6.0%
	Subbituminous	29,493	148	17,504	81	68.5%	30,634	141	-3.7%
U.S. Total	Bituminous	36,782	144	23,008	77	59.9%	39,886	137	-7.8%
	Subbituminous	65,965	143	38,085	81	73.2%	68,857	134	-4.2%

Source: U.S. Energy Information Administration

NOTE: Stockpile levels shown above reflect a sample of electric power sector plants, which were used to create the days of burn statistics. These levels will not equal total electric power sector stockpile levels.

Source: Energy Information Administration, Electric Monthly Update



For the Internal U.S. Waterway Monthly Indicators, estimates for the most recent month are based on lock performance management data. The estimates will be superseded by actual data as it becomes available.

Source: Waterborne Commerce Statistics Center

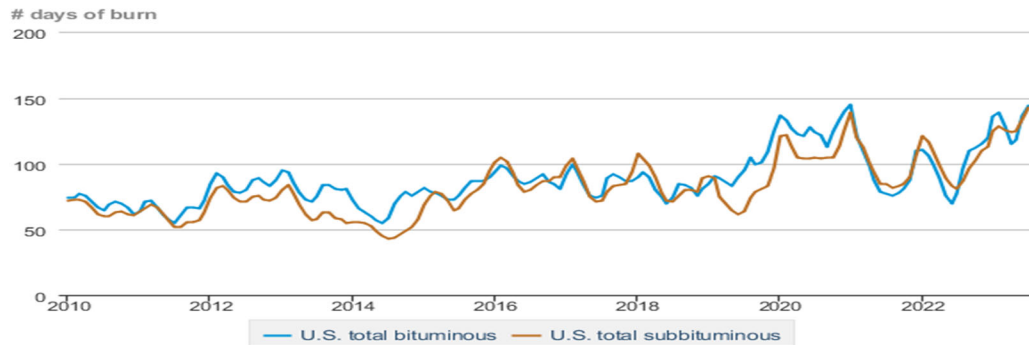
Average weekly coal commodity spot prices
dollars per short ton

	Week ending					Week ago
	09/01/23	09/08/23	09/15/23	09/22/23	09/29/23	change
Central Appalachia 12,500 Btu, 1.2 SO ₂	\$70.00	\$70.00	\$70.00	\$70.00	\$72.15	\$2.15
Northern Appalachia 13,000 Btu, < 3.0 SO ₂	\$54.10	\$54.10	\$54.00	\$54.00	\$53.00	-\$1.00
Illinois Basin 11,800 Btu, 5.0 SO ₂	\$50.00	\$50.00	\$49.00	\$49.00	\$47.75	-\$1.25
Powder River Basin 8,800 Btu, 0.8 SO ₂	\$14.30	\$14.30	\$14.25	\$14.25	\$14.20	-\$0.05
Uinta Basin 11,700 Btu, 0.8 SO ₂	\$32.35	\$32.35	\$32.20	\$32.20	\$32.05	-\$0.15

Data source: With permission, S&P Global

Source: Energy Information Administration (with permission from S&P Global), *Coal Market Report*

Days of burn by non-lignite coal rank, January 2010 - July 2023



eia Data source: U.S. Energy Information Administration

Source: Energy Information Administration, *Electricity Monthly Update Report*

Temperature – heating & cooling degree days (week ending Sep 21)

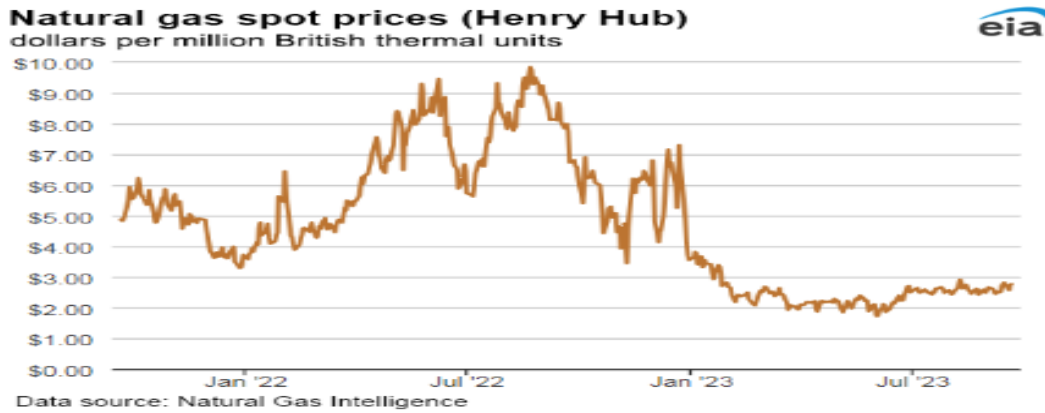
Region	HDDs			CDDs		
	Current total	Deviation from normal	Deviation from last year	Current total	Deviation from normal	Deviation from last year
New England	25	-11	-2	0	-2	-3
Middle Atlantic	23	-4	14	0	-10	-17
E N Central	31	1	26	3	-8	-36
W N Central	19	-15	14	20	4	-37
South Atlantic	6	-2	6	52	-5	-12
E S Central	6	-2	5	42	-3	-24
W S Central	0	-2	0	90	14	-16
Mountain	26	-13	9	32	-4	-3
Pacific	8	-4	0	10	-19	8
United States	18	-4	11	28	-5	-15

Data source: National Oceanic and Atmospheric Administration
Note: HDDs=heating degree days; CDDs=cooling degree days

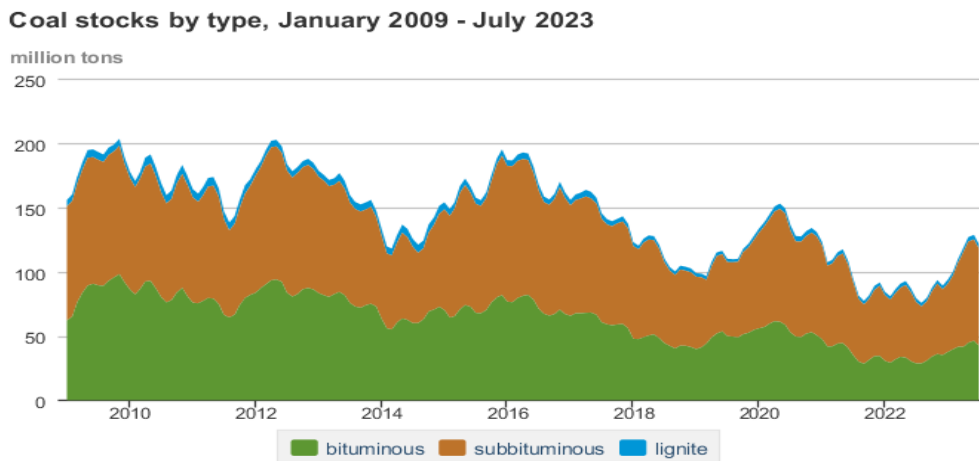
Source: Energy Information Administration, *Natural Gas Weekly Update*.

U.S. Production of Selected Mineral Commodities	2023 Year to Date - 2nd Quarter	2022 Year to Date - 2nd Quarter	Percent Change
Aluminum, secondary (000 Mt.)	453.0	434.0	4%
Cement (Mil. Mt.)	42.5	43.6	-3%
Copper (000 Mt.)	544.0	621.0	-12%
Gold (Mt.)	79.1	83.6	-5%
Gypsum (Mil. Mt.)	9.5	9.0	6%
Iron Ore (Mil. Mt.)	20.7	18.7	11%
Lead (000 Mt.)	140.0	141.0	-1%
Molybdenum (000 Mt.)	16.5	16.5	0%
Palladium (Mt.)	4.8	5.5	-13%
Phosphate rock (Mil. Mt.)	9.9	9.8	1%
Platinum (Mt.)	1.5	1.6	-6%
Sand & gravel, construction (Mil. Mt.)	411.0	437.0	-6%
Silver (Mt.)	538.0	514.0	5%
Soda ash (Mil. Mt.)	5.4	5.5	-2%
Stone, crushed (Mil. Mt.)	712.0	708.0	1%
Zinc (000 Mt.)	366.0	375.0	-2%

Source: U.S. Geological Survey, Mineral Industry Surveys. Percent change based on USGS rounded numbers. 2022 data are preliminary estimates. W - withheld, N/A - not available



Source: Energy Information Administration, *Natural Gas Weekly*.



Source: Energy Information Administration, *Electricity Monthly Update*

Mining-Related Commodity Prices

Commodity Price - Snapshot		
Metals Prices	Date	Price
Cobalt Spot Price (\$/lb)	10/2/23	\$15.15
Copper Spot Price (\$/lb)	10/3/23	\$3.61
Gold Spot Price (\$/ounce)	9/27/23	\$1,828.30
Lead Spot Price (\$/lb)	10/2/23	\$0.98
Lithium Spot Price (\$/kg)	10/3/23	\$22.81
Molybdenum Spot Price (\$/kg)	10/2/23	\$55.63
Nickel Spot Price (\$/lb)	10/2/23	\$8.35
Silver Spot Price (\$/ounce)	10/3/23	\$21.05
Steel HRC Price (\$/mt)	10/3/23	\$763.64
Steel Rebar Price (\$/mt)	9/28/23	\$502.86
Zinc Spot Price (\$/lb)	10/3/23	\$1.13
Energy Prices	Date	Price
Coal Price - Australian Premium Coking Coal Futures (\$/mt)	10/3/23	\$338.00
Coal Spot Price - Central Appalachian (\$/st)	9/29/23	\$72.15
Coal Spot Price - Newcastle futures (\$/mt)	10/3/23	\$149.50
Coal Spot Price - Rotterdam futures (\$/mt)	10/3/23	\$120.80
Natural Gas Spot Price - Henry Hub (\$/mmbtu)	9/27/23	\$2.71
Uranium Spot Price (\$/lb)	9/25/23	\$70.00

Sources: publicly available data from eia.gov, dailymetalprice.com, tradingeconomics.com, sgxgroup.com, investing.com

EIA Working Natural Gas Underground Storage

Working gas in underground storage

Region	Stocks billion cubic feet (Bcf)		
	2023-09-22	2023-09-15	change
East	821	793	28
Midwest	962	931	31
Mountain	234	228	6
Pacific	271	263	8
South Central	1,071	1,053	18
Total	3,359	3,269	90

Data source: U.S. Energy Information Administration Form EIA-912, *Weekly Underground Natural Gas Storage Report*

Note: Totals may not equal sum of components because of independent rounding.

Source: Energy Information Administration, *Natural Gas Weekly Update*

EIA Oil and Natural Gas Rig Productivity

Region	NEW-WELL PRODUCTION PER RIG BY REGION			PRODUCTION BY REGION			DUC WELLS BY REGION		
	New-well oil production per rig barrels/day			New-well gas production per rig thousand cubic feet/day					
	September 2023	October 2023	change	September 2023	October 2023	change			
Anadarko	692	691	(1)	4,235	4,341	106			
Appalachia	193	193	-	23,782	23,825	43			
Bakken	1,697	1,709	12	2,644	2,670	26			
Eagle Ford	1,455	1,469	14	5,966	6,026	60			
Haynesville	19	19	-	11,531	11,739	208			
Niobrara	1,444	1,452	8	4,091	4,124	33			
Permian	1,085	1,102	17	2,083	2,108	25			
Rig-weighted average	985	1,002	17	5,286	5,232	(54)			

Source: Energy Information Administration, *Drilling Productivity Report*

USGS Cobalt – U.S. Trade, Reported Stocks and Listed Prices

Cobalt - July 2023	Jul-23	Year to Date
U.S. Imports for Consumption - Metals (mt)	641	4,540
U.S. Exports of Cobalt Materials - Cobalt Content (mt)	532	3,110
Reported LME Stocks of Cobalt Metal (mt)	93	-
Listed Prices by Type (\$/lb): US Spot & LME Cash Avg.	17.85	14.85

Source: USGS, Mineral Industry Survey, Cobalt in July, September 2023

Cobalt and Lithium Prices

Cobalt Prices (US\$/pound):



Source: Dailymetalprice.com - <https://www.dailymetalprice.com/metalpricecharts.php?c=co&u=lb&d=0>

Lithium Prices (US\$/pound):



Source: Dailymetalprice.com - <https://www.dailymetalprice.com/metalpricecharts.php>