



NATIONAL MINING ASSOCIATION

WEEKLY STATISTICAL SUMMARY

October 13, 2023 Edition
(Data for Week Ending October 7, 2023)

Prepared by
National Mining Association

101 Constitution Avenue NW, Suite 500 East
Washington, DC 20001
(202) 463-2600
www.nma.org



NMA WEEKLY STATISTICAL SUMMARY

Vol. 61, No. 40 | Dated 10/13/23

PRODUCTION, CONSUMPTION & TRADE

	Week Ended			* Cumulative Jan 1 to		
	10/07/23	10/01/22	% Chg	10/07/23	10/07/22	% Chg
EIA Coal Production (000 Tons):						
Week Ended/Year to Date	11,456	11,673	-1.9%	454,222	459,729	-1.2%
52 Weeks Ended	598,471	593,118	0.9%			
<i>Note: the year 2022 has an extra Saturday</i>						
AAR Coal Rail Cars Loaded:	67,210	67,866	-1.0%	2,638,533	2,639,714	0.0%
Coal Production	Sep 23/22		% Chg	Jan - Sep 23/22		% Chg
Month Ended - September	50,203	51,574	-2.7%	442,766	448,397	-1.3%

U.S. Department of Commerce Coal Trade (000 Tons)

	August 23/22		% Chg	Jan - August 23/22		% Chg
Coal Exports:						
Metallurgical	5,133	3,496	46.8%	34,237	30,859	10.9%
Steam Bit. *	3,760	3,447	9.1%	30,052	25,652	17.2%
Lignite	6	6	0.0%	69	54	27.8%
Anthracite	<u>104</u>	<u>14</u>	642.9%	<u>549</u>	<u>307</u>	78.8%
Total	9,003	6,963	29.3%	64,907	56,872	14.1%
Coal Imports:	326	660	-50.6%	2,360	3,618	-34.8%

	Week Ended			Cumulative Week 1 to		
	10/07/23	10/08/22	% Chg	10/07/23	10/08/22	% Chg
EEl Electric Total Output (Mil. Kwh)	75,962	69,706	9.0%	3,198,094	3,247,120	-1.5%
EEl Coal Region Output (Mil. Kwh)	66,124	59,789	10.6%	2,782,584	2,820,912	-1.4%
AISI Raw Steel Output (000 Tons)	1,698	1,644	3.3%	68,468	69,327	-1.2%

EIA AVERAGE COAL & NATURAL GAS SPOT PRICES

Dollars Per Short Ton

Average Coal Spot Prices (\$/Short Ton)	Week Ending			Natural Gas Spot Prices (\$/MMBtu)	
	10/06/23	09/29/23	% Chg	Wed.	10/04/23
Central App, 12,500 Btu, 1.2 SO ₂	\$74.35	\$72.15	3.0%	Henry Hub	2.91
Northern App, 13,000 Btu, < 3.0 SO ₂	54.65	53.00	3.1%	New York	1.33
Illinois Basin, 11,800, 5.0 SO ₂	47.75	47.75	0.0%	Chicago	2.60
Powder River Basin, 8,800 Btu 0.8 SO ₂	14.15	14.20	-0.4%	Cal.Comp.Avg.	3.87
Uinta Basin, 11,700 Btu, 0.8 SO ₂	31.90	32.05	-0.5%		

Coal exports and Imports are "as reported" (not revised); *Steam excludes lignite & anthracite. All data in this report are preliminary and subject to revision. r/ revised.

Sources: EIA; Edison Electric Institute; American Iron & Steel Institute; Association of American Railroads; Dept. of Commerce; S&P Global; NGI's Daily Gas Price Index

EIA Estimated Weekly U.S. Coal Production Overview

Coal-Producing Region & State (thousand short tons)	Week Ended			Year to Date			52 Weeks Ended		
	10/7/2023 (week 40)	9/30/2023 (week 39)	10/1/2022 (week 40)	10/7/2023	10/7/2022	% Change	10/7/2023	10/1/2022	% Change
Alabama	228	233	212	8,902	8,094	10.0	11,442	9,853	16.1
Alaska	23	20	19	807	743	8.5	1,097	991	10.7
Colorado	213	242	258	9,226	10,062	-8.3	12,156	13,272	-8.4
Illinois	733	761	698	30,410	29,319	3.7	39,247	36,389	7.9
Indiana	554	529	463	20,182	17,777	13.5	26,401	22,206	18.9
Kentucky total	584	574	542	22,892	21,906	4.5	29,944	28,194	6.2
Eastern (KY)	257	255	230	10,030	9,190	9.1	13,097	11,719	11.8
Western (KY)	327	320	312	12,862	12,716	1.1	16,847	16,476	2.3
Louisiana	6	7	6	231	232	-0.8	311	299	4.0
Maryland	27	29	28	1,050	1,110	-5.4	1,423	1,373	3.6
Mississippi	47	61	68	2,071	2,664	-22.2	2,828	3,301	-14.3
Missouri	3	2	1	97	52	86.8	120	57	110.5
Montana	518	551	556	21,998	22,236	-1.1	28,433	29,092	-2.3
New Mexico	161	184	219	7,004	8,436	-17.0	9,273	11,061	-16.2
North Dakota	480	510	553	19,371	21,111	-8.2	25,402	26,789	-5.2
Ohio	34	38	44	1,480	1,965	-24.7	2,046	2,652	-22.9
Oklahoma	s	s	s	1	1	10.9	2	1	100.0
Pennsylvania total	823	790	723	32,170	30,388	5.9	42,358	39,492	7.3
Anthracite (PA)	56	53	48	2,092	1,869	12.0	2,754	2,429	13.4
Bituminous (PA)	767	737	675	30,078	28,519	5.5	39,604	37,063	6.9
Tennessee	.	s	.	1	s	4.8	1	s	100.0
Texas	284	308	334	11,095	12,975	-14.5	15,504	17,409	-10.9
Utah	137	164	215	5,891	8,733	-32.5	8,027	11,597	-30.8
Virginia	241	236	224	9,030	8,420	7.2	11,875	10,897	9.0
West Virginia total	1,683	1,704	1,603	68,311	64,651	5.7	88,621	82,811	7.0
Northern (WV)	915	937	920	36,815	36,332	1.3	48,244	46,935	2.8
Southern (WV)	769	767	684	31,496	28,319	11.2	40,376	35,876	12.5
Wyoming	4,676	4,794	4,907	182,002	188,853	-3.6	241,962	245,383	-1.4
Appalachian total	3,292	3,285	3,065	130,974	123,817	5.8	170,862	158,797	7.6
Interior total	1,955	1,988	1,882	76,949	75,736	1.6	101,260	96,138	5.3
Western total	6,208	6,464	6,726	246,299	260,175	-5.3	326,349	338,184	-3.5
East of Mississippi River	4,954	4,956	4,606	196,499	186,293	5.5	256,185	237,169	8.0
West of Mississippi River	6,502	6,781	7,067	257,723	273,436	-5.7	342,286	355,950	-3.8
Bituminous and lignite	11,400	11,684	11,625	452,130	457,860	-1.3	595,717	590,690	0.9
Anthracite	56	53	48	2,092	1,869	12.0	2,754	2,429	13.4
U.S. total	11,456	11,737	11,673	454,222	459,729	-1.2	598,471	593,118	0.9
Railroad cars loaded	67,210	68,365	67,866	2,638,533	2,639,714	s	3,481,682	3,414,823	2.0

Source: Energy Information Administration



Weekly Electric Output

Volume 91 No. 40

OUTPUT FOR WEEK ENDED - Oct 07, 2023

Oct 12, 2023

The net available amount of electric energy distributed by the Total Electric Utility Industry* for the week ended Saturday, **Oct 07, 2023** was **75,962** gigawatthours (GWh), according to the Edison Electric Institute. This is equivalent to **181** on the weekly electric output index.

WEEKLY ELECTRIC OUTPUT BY GEOGRAPHIC DIVISION

(48 CONTIGUOUS STATES)

	Week Ended October 07		52 Weeks Ended October 07	
	GWh Output	% Increase Over Corresponding Week of 2022	GWh Output	% Increase Over Corresponding Period of 2022
New England	1,986	3.7	111,342	-4.1
Mid-Atlantic	7,419	8.7	404,445	-3.5
Central Industrial	11,586	11.3	639,307	-2.5
West Central	6,489	13.0	340,221	0.1
Southeast	18,953	11.7	1,013,547	-1.6
South Central	16,692	14.8	862,501	4.0
Rocky Mountain	4,985	-6.1	293,812	-0.1
Pacific Northwest	2,547	1.2	161,157	0.6
Pacific Southwest	5,305	-3.3	267,543	-1.9
Total United States	75,962	9.0	4,093,875	-0.5

WEEKLY ELECTRIC OUTPUT IN PREVIOUS WEEKS--GWh

Week Ended	2023	Week Ended	2022	% Inc. (23/22)	52 Weeks Ended	2023	% Inc. (23/22)
Sep 16	80,267	Sep 17	78,471	2.3	Sep 16	4,083,879	-0.9
Sep 23	76,650	Sep 24	79,329	-3.4	Sep 23	4,081,200	-1.1
Sep 30	77,239	Oct 01	70,819	9.1	Sep 30	4,087,620	-0.8
Oct 07	75,962	Oct 08	69,706	9.0	Oct 07	4,093,875	-0.5
Oct 07	3,198,094	Oct 08	3,247,120	-1.5	YEAR TO DATE, FIRST 40 WEEKS		

WEEKLY ELECTRIC OUTPUT INDEX--TOTAL U.S.*

SEASONALLY ADJUSTED 1982 = 100

Week Ended	2023	Week Ended	2022	Week Ended	2021
Sep 16	177	Sep 17	187	Sep 18	184
Sep 23	171	Sep 24	199	Sep 25	178
Sep 30	184	Oct 01	177	Oct 02	178
Oct 07	181	Oct 08	176	Oct 09	187

* Excludes Alaska and Hawaii.

+ Includes investor-owned companies, cooperatives and government-owned utilities.

Copyright © 2023 Edison Electric Institute. All rights reserved.

EEI WEEKLY ELECTRIC OUTPUT BY GEOGRAPHIC DIVISION (48 CONTIGUOUS STATES)

	Week Ended			NMA CUMULATIVE JANUARY WEEK ONE TO			52 Weeks Ended		
	7-Oct	8-Oct	% Increase Over Corresponding Week	7-Oct	8-Oct	% Increase Over Corresponding Week	7-Oct	8-Oct	% Increase Over Corresponding Week
	2023 GWh Output	2022 GWh Output		2023 GWh Output	2022 GWh Output		2023 GWh Output	2022 GWh Output	
New England	1,986	1,915	3.7%	85,997	90,434	-4.9%	111,342	116,046	-4.1%
Mid-Atlantic	7,419	6,824	8.7%	315,097	330,117	-4.5%	404,445	419,124	-3.5%
Central Industrial	11,586	10,406	11.3%	497,159	515,477	-3.6%	639,307	655,472	-2.5%
West Central	6,489	5,743	13.0%	264,426	266,040	-0.6%	340,221	339,837	0.1%
Southeast	18,953	16,961	11.7%	791,411	814,416	-2.8%	1,013,547	1,029,522	-1.6%
South Central	16,692	14,544	14.8%	686,841	664,879	3.3%	862,501	828,952	4.0%
Rocky Mountain	4,985	5,311	-6.1%	227,651	229,983	-1.0%	293,812	294,227	-0.1%
Pacific Northwest	2,547	2,518	1.2%	121,264	121,466	-0.2%	161,157	160,172	0.6%
Pacific Southwest	5,305	5,484	-3.3%	208,249	214,307	-2.8%	267,543	272,739	-1.9%
Total United States ^{1/}	<u>75,962</u>	<u>69,706</u>	9.0%	<u>3,198,094</u>	<u>3,247,119</u>	-1.5%	<u>4,093,875</u>	<u>4,116,091</u>	-0.5%
Coal Regions Only ^{2/}	66,124	59,789	10.6%	2,782,584	2,820,912	-1.4%	3,553,833	3,567,134	-0.4%

Notes: EEI output data are an estimate of electricity load made available for distribution derived as weekly net generation + purchases from non-utilities + net imports - exports - sales for resale. It is not meant to be a measure of electricity generation for the U.S. EEI survey data represent the majority of national distribution (large utilities, large government power projects, some independent and large municipal power projects). The remaining segment of the industry (smaller producers) is estimated. Non-utility generation is captured via direct sales to utilities. **Note: the year 2022 has an extra Saturday.**

^{1/} Excludes Alaska and Hawaii

^{2/} Excludes New England and Pacific regions

SOURCE: Edison Electric Institute (EEI), *Weekly Electric Output Report*.

AMERICAN IRON AND STEEL INSTITUTE
 25 Massachusetts Avenue, NW, Suite 800
 Washington, D.C. 20001

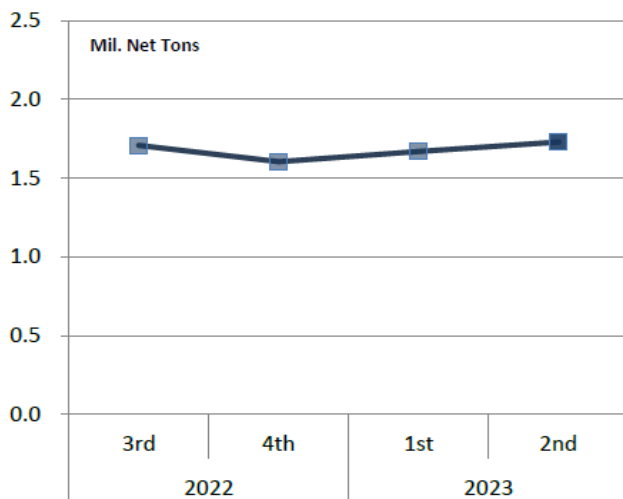
October 9, 2023

ESTIMATED WEEKLY RAW STEEL * PRODUCTION

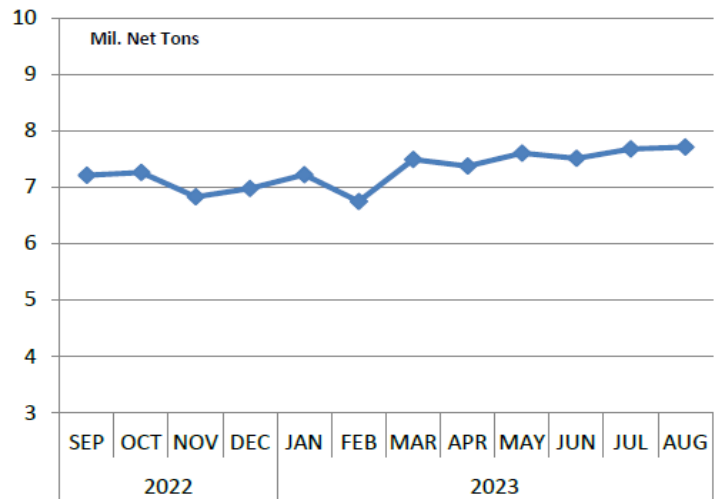
<u>Period</u>	<u>Thousand Net Tons</u>	<u>Percent Change from Previous Period</u>	<u>Percent Capacity Utilization**</u>	<u>Production by District</u>		
				<u>Week Ending</u>		
				<u>Oct 7</u>	<u>Sep 30</u>	
<u>Week Ending</u>				North East	132	134
				Great Lakes	558	568
Oct 7, 2023	1,698	-1.4	75.7	Midwest	204	206
Oct 7, 2022	1,644	3.3	73.7	Southern	738	746
Sep 30, 2023	1,722	-0.7	75.7	Western	66	68
				Total	1,698	1,722
<u>Year-to-Date +</u>						
Oct 7, 2023	68,468	-1.2	75.9			
Oct 7, 2022	69,327	-	78.8			

*Raw steel production tonnage included in this report is estimated based on a sampling of steel producers (50% of domestic producers). Therefore, this report should be used primarily to assess production trends. The AISI production report "AIS 7," produced monthly and available by subscription, provides a more accurate summary of steel production based on data supplied by companies representing approximately 75% of U.S. production capacity plus includes revisions for previous months.

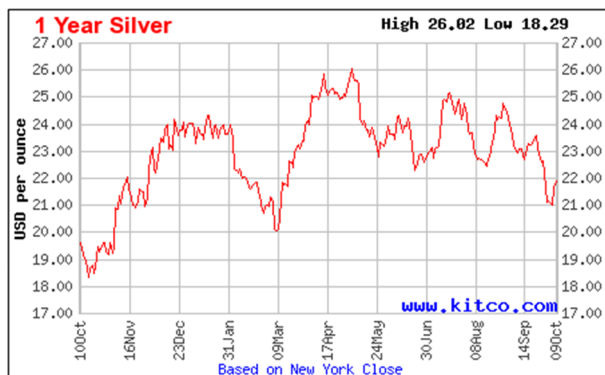
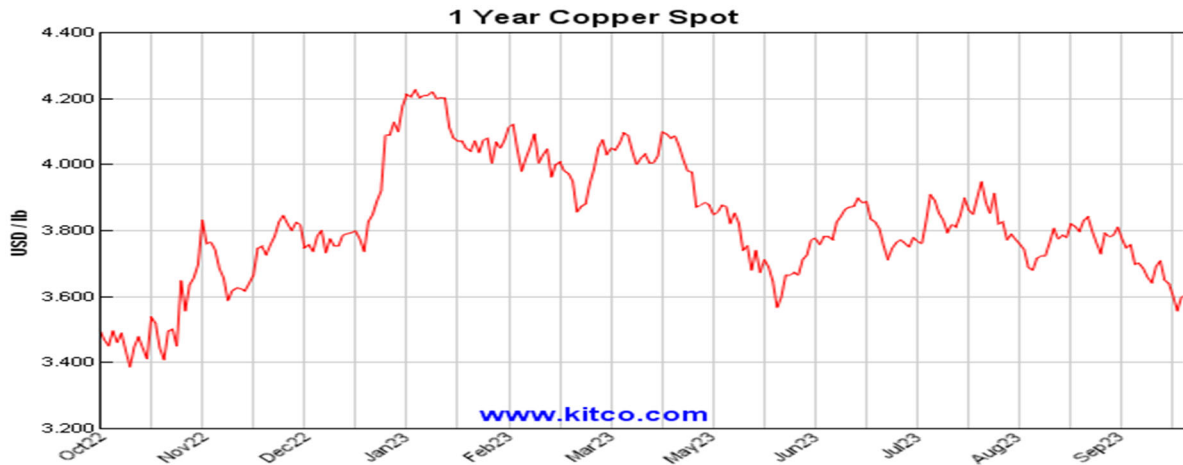
Average Weekly Raw Steel Production



Monthly Raw Steel Production



*Steel in the first solid state after melting suitable for further processing or sale, including ingots, steel for castings and strand or pressure cast blooms, slabs or other product forms. ** Based on tonnage capability to produce raw steel for a sustained full order book.



Source: Kitco website - www.kitco.com/connecting.html

U.S. Rail Traffic¹
Week 40, 2023 – Ended October 7, 2023

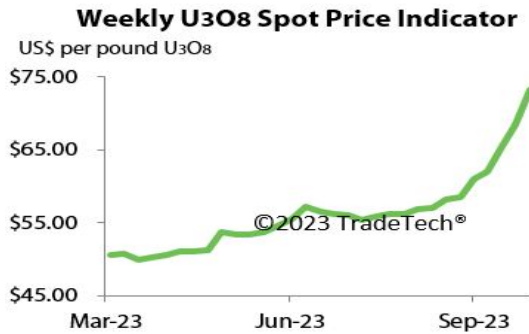
	This Week		Year-To-Date		
	Cars	vs 2022	Cumulative	Avg/wk ²	vs 2022
Total Carloads	233,768	3.6%	9,008,598	225,215	0.4%
Chemicals	29,905	3.8%	1,245,451	31,136	-2.4%
Coal	67,210	1.8%	2,638,517	65,963	-0.1%
Farm Products excl. Grain, and Food	16,461	-0.7%	645,111	16,128	1.1%
Forest Products	7,937	0.0%	325,305	8,133	-6.8%
Grain	23,235	6.4%	724,620	18,116	-12.2%
Metallic Ores and Metals	20,051	1.2%	831,855	20,796	5.0%
Motor Vehicles and Parts	16,495	18.9%	597,634	14,941	13.8%
Nonmetallic Minerals	33,590	2.8%	1,278,988	31,975	3.4%
Petroleum and Petroleum Products	10,139	15.0%	378,392	9,460	10.6%
Other	8,745	-4.8%	342,725	8,568	-1.6%
Total Intermodal Units	265,449	2.5%	9,594,783	239,870	-7.9%
Total Traffic	499,217	3.0%	18,603,381	465,085	-4.1%

¹ Excludes U.S. operations of CPKC, CN and GMXT.

² Average per week figures may not sum to totals as a result of independent rounding.

Source: AAR website - <https://www.aar.org/Pages/NEWS-and-EVENTS.aspx>

Trade Tech's and UX's Uranium Price Indicators



Sources: Trade Tech, Uranium Info Website – www.uranium.info ; Source: Ux Consulting Co., LLC – <http://www.uxc.com>

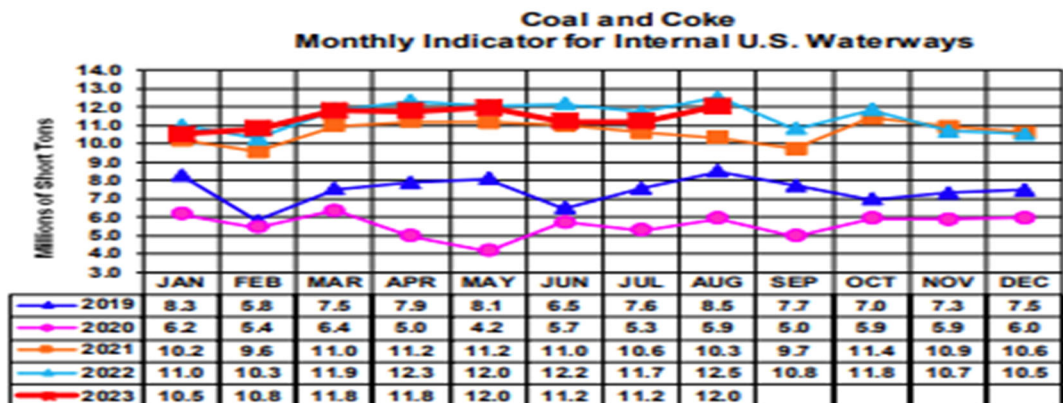
Coal stocks and average number of days of burn for non-lignite coal by region (electric power sector)

Zone	Coal	July 2023		July 2022		% Change of Stocks	June 2023		% Change of Stocks
		Stocks (1000 tons)	Days of Burn	Stocks (1000 tons)	Days of Burn		Stocks (1000 tons)	Days of Burn	
Northeast	Bituminous	2,715	362	1,638	365	65.8%	3,046	365	-10.9%
	Subbituminous								
South	Bituminous	18,294	140	10,833	56	68.9%	20,922	128	-12.6%
	Subbituminous	5,793	90	3,254	38	78.0%	6,123	79	-5.4%
Midwest	Bituminous	12,731	129	7,317	73	74.0%	12,680	117	0.4%
	Subbituminous	30,679	151	17,327	102	77.1%	32,099	146	-4.4%
West	Bituminous	3,043	148	3,221	159	-5.5%	3,238	152	-6.0%
	Subbituminous	29,493	148	17,504	81	68.5%	30,634	141	-3.7%
U.S. Total	Bituminous	36,782	144	23,008	77	59.9%	39,886	137	-7.8%
	Subbituminous	65,965	143	38,085	81	73.2%	68,857	134	-4.2%

Source: U.S. Energy Information Administration

NOTE: Stockpile levels shown above reflect a sample of electric power sector plants, which were used to create the days of burn statistics. These levels will not equal total electric power sector stockpile levels.

Source: Energy Information Administration, Electric Monthly Update



For the Internal U.S. Waterway Monthly Indicators, estimates for the most recent month are based on lock performance management data. The estimates will be superseded by actual data as it becomes available.

Source: Waterborne Commerce Statistics Center

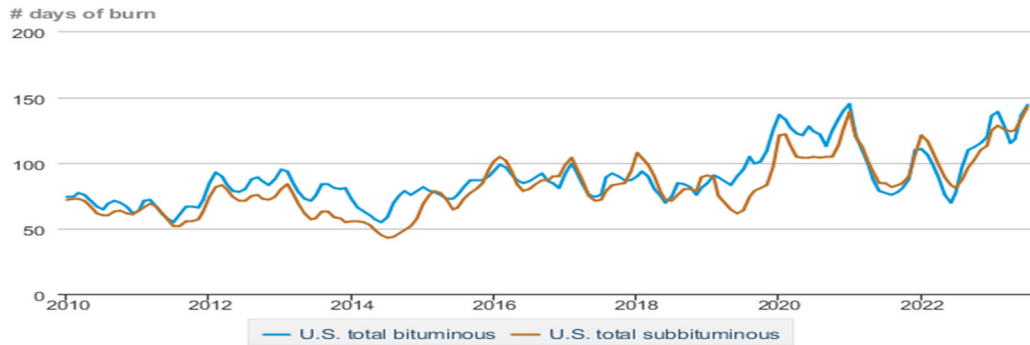
Average weekly coal commodity spot prices
dollars per short ton

	Week ending					Week ago
	09/08/23	09/15/23	09/22/23	09/29/23	10/06/23	change
Central Appalachia 12,500 Btu, 1.2 SO ₂	\$70.00	\$70.00	\$70.00	\$72.15	\$74.35	\$2.20
Northern Appalachia 13,000 Btu, < 3.0 SO ₂	\$54.10	\$54.00	\$54.00	\$53.00	\$54.65	\$1.65
Illinois Basin 11,800 Btu, 5.0 SO ₂	\$50.00	\$49.00	\$49.00	\$47.75	\$47.75	\$0.00
Powder River Basin 8,600 Btu, 0.8 SO ₂	\$14.30	\$14.25	\$14.25	\$14.20	\$14.15	\$-0.05
Uinta Basin 11,700 Btu, 0.8 SO ₂	\$32.35	\$32.20	\$32.20	\$32.05	\$31.90	\$-0.15

Data source: With permission, S&P Global

Source: Energy Information Administration (with permission from S&P Global), *Coal Market Report*

Days of burn by non-lignite coal rank, January 2010 - July 2023



 Data source: U.S. Energy Information Administration

Source: Energy Information Administration, *Electricity Monthly Update Report*

Temperature – heating & cooling degree days (week ending Sep 28)

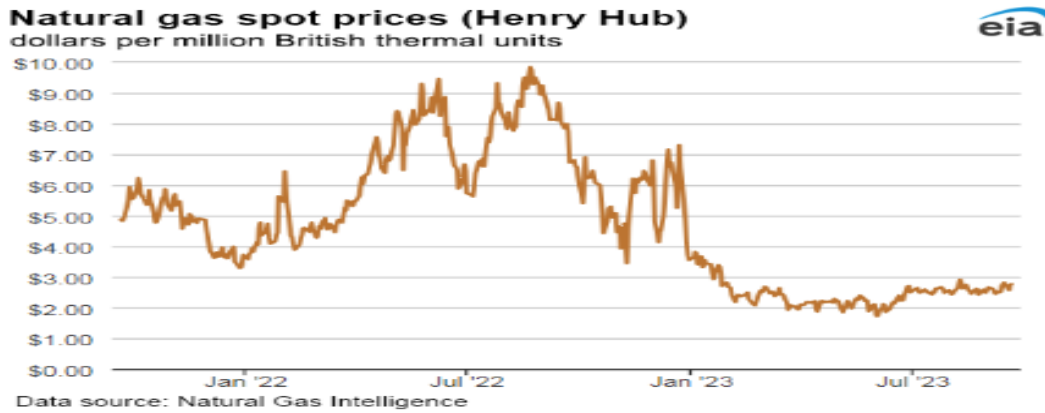
Region	HDDs			CDDs		
	Current total	Deviation from normal	Deviation from last year	Current total	Deviation from normal	Deviation from last year
New England	56	5	6	0	-1	0
Middle Atlantic	40	-1	-3	0	-6	-1
E N Central	20	-24	-48	10	4	10
W N Central	12	-34	-45	31	21	26
South Atlantic	15	-1	-7	44	-5	-2
E S Central	2	-13	-20	50	16	18
W S Central	0	-4	-1	111	48	27
Mountain	34	-15	8	29	0	-9
Pacific	12	-3	9	5	-17	-39
United States	20	-11	-15	30	4	0

Data source: National Oceanic and Atmospheric Administration
Note: HDDs=heating degree days; CDDs=cooling degree days

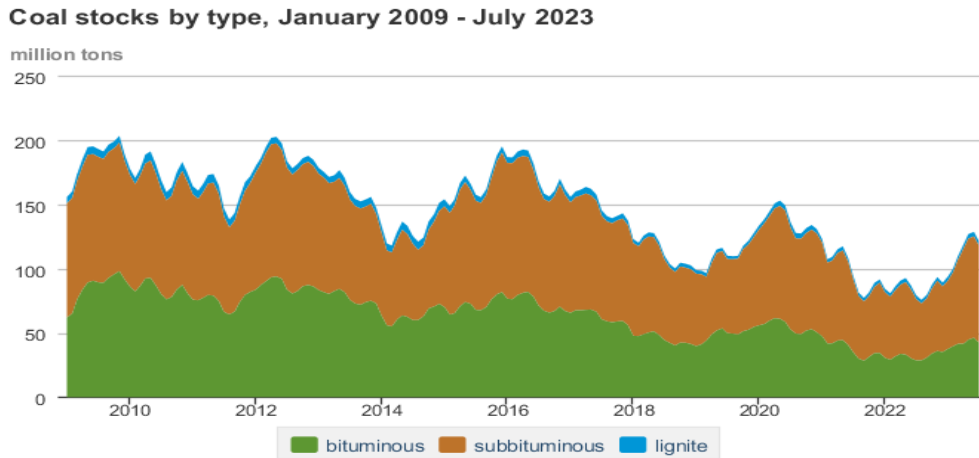
Source: Energy Information Administration, *Natural Gas Weekly Update*.

U.S. Production of Selected Mineral Commodities	2023 Year to Date - 2nd Quarter	2022 Year to Date - 2nd Quarter	Percent Change
Aluminum, secondary (000 Mt.)	453.0	434.0	4%
Cement (Mil. Mt.)	42.5	43.6	-3%
Copper (000 Mt.)	544.0	621.0	-12%
Gold (Mt.)	79.1	83.6	-5%
Gypsum (Mil. Mt.)	9.5	9.0	6%
Iron Ore (Mil. Mt.)	20.7	18.7	11%
Lead (000 Mt.)	140.0	141.0	-1%
Molybdenum (000 Mt.)	16.5	16.5	0%
Palladium (Mt.)	4.8	5.5	-13%
Phosphate rock (Mil. Mt.)	9.9	9.8	1%
Platinum (Mt.)	1.5	1.6	-6%
Sand & gravel, construction (Mil. Mt.)	411.0	437.0	-6%
Silver (Mt.)	538.0	514.0	5%
Soda ash (Mil. Mt.)	5.4	5.5	-2%
Stone, crushed (Mil. Mt.)	712.0	708.0	1%
Zinc (000 Mt.)	366.0	375.0	-2%

Source: U.S. Geological Survey, Mineral Industry Surveys. Percent change based on USGS rounded numbers. 2022 data are preliminary estimates. W - withheld, N/A - not available



Source: Energy Information Administration, *Natural Gas Weekly*.



Source: Energy Information Administration, *Electricity Monthly Update*

Mining-Related Commodity Prices

Commodity Price - Snapshot		
Metals Prices	Date	Price
Cobalt Spot Price (\$/lb)	10/9/23	\$15.15
Copper Spot Price (\$/lb)	10/10/23	\$3.61
Gold Spot Price (\$/ounce)	10/10/23	\$1,859.70
Lead Spot Price (\$/lb)	10/9/23	\$0.97
Lithium Spot Price (\$/kg)	10/10/23	\$22.81
Molybdenum Spot Price (\$/kg)	10/9/23	\$55.63
Nickel Spot Price (\$/lb)	10/9/23	\$8.46
Silver Spot Price (\$/ounce)	10/10/23	\$21.71
Steel HRC Price (\$/mt)	10/10/23	\$777.27
Steel Rebar Price (\$/mt)	10/10/23	\$492.67
Zinc Spot Price (\$/lb)	10/10/23	\$1.12
Energy Prices	Date	Price
Coal Price - Australian Premium Coking Coal Futures (\$/mt)	10/10/23	\$344.50
Coal Spot Price - Central Appalachian (\$/st)	10/6/23	\$74.35
Coal Spot Price - Newcastle futures (\$/mt)	10/10/23	\$140.40
Coal Spot Price - Rotterdam futures (\$/mt)	10/10/23	\$130.25
Natural Gas Spot Price - Henry Hub (\$/mmbtu)	10/4/23	\$2.91
Uranium Spot Price (\$/lb)	10/2/23	\$72.75

Sources: publicly available data from eia.gov, dailymetalprice.com, tradingeconomics.com, sgxgroup.com, investing.com

EIA Working Natural Gas Underground Storage

Working gas in underground storage

Region	Stocks billion cubic feet (Bcf)		
	2023-09-29	2023-09-22	change
East	847	821	26
Midwest	991	962	29
Mountain	239	234	5
Pacific	278	271	7
South Central	1,090	1,071	19
Total	3,445	3,359	86

Data source: U.S. Energy Information Administration Form EIA-912, *Weekly Underground Natural Gas Storage Report*

Note: Totals may not equal sum of components because of independent rounding.

Source: Energy Information Administration, *Natural Gas Weekly Update*

EIA Oil and Natural Gas Rig Productivity

Region	NEW-WELL PRODUCTION PER RIG BY REGION			PRODUCTION BY REGION			DUC WELLS BY REGION		
	New-well oil production per rig barrels/day			New-well gas production per rig thousand cubic feet/day					
	September 2023	October 2023	change	September 2023	October 2023	change	September 2023	October 2023	change
Anadarko	692	691	(1)	4,235	4,341	106			
Appalachia	193	193	-	23,782	23,825	43			
Bakken	1,697	1,709	12	2,644	2,670	26			
Eagle Ford	1,455	1,469	14	5,966	6,026	60			
Haynesville	19	19	-	11,531	11,739	208			
Niobrara	1,444	1,452	8	4,091	4,124	33			
Permian	1,085	1,102	17	2,083	2,108	25			
Rig-weighted average	985	1,002	17	5,286	5,232	(54)			

Source: Energy Information Administration, *Drilling Productivity Report*

USGS Cobalt – U.S. Trade, Reported Stocks and Listed Prices

Cobalt - July 2023	Jul-23	Year to Date
U.S. Imports for Consumption - Metals (mt)	641	4,540
U.S. Exports of Cobalt Materials - Cobalt Content (mt)	532	3,110
Reported LME Stocks of Cobalt Metal (mt)	93	-
Listed Prices by Type (\$/lb): US Spot & LME Cash Avg.	17.85	14.85

Source: USGS, Mineral Industry Survey, Cobalt in July, September 2023

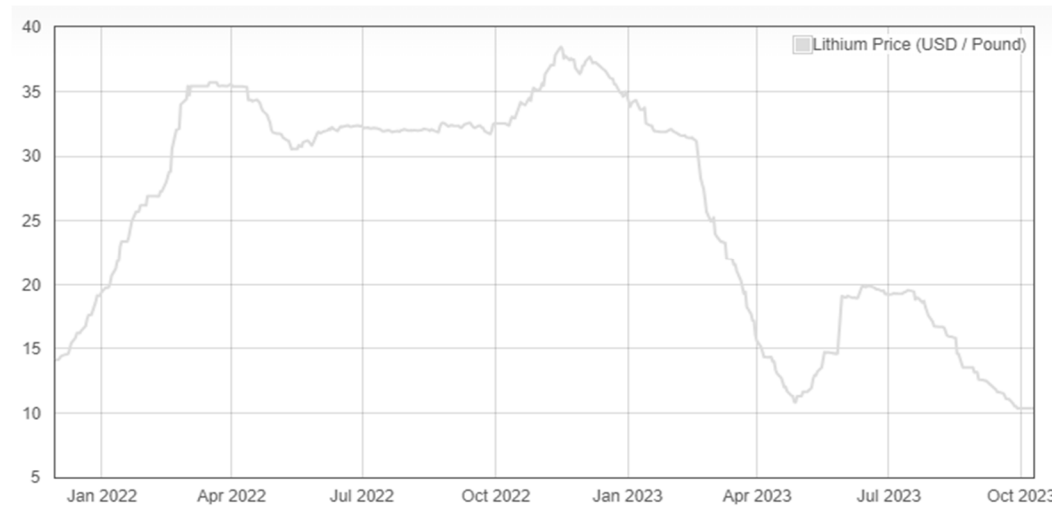
Cobalt and Lithium Prices

Cobalt Prices (US\$/pound):



Source: Dailymetalprice.com - <https://www.dailymetalprice.com/metalpricecharts.php?c=co&u=lb&d=0>

Lithium Prices (US\$/pound):



Source: Dailymetalprice.com - <https://www.dailymetalprice.com/metalpricecharts.php>