



NATIONAL MINING ASSOCIATION

WEEKLY STATISTICAL SUMMARY

November 24, 2023 Edition
(Data for Week Ending November 18, 2023)

Prepared by
National Mining Association

101 Constitution Avenue NW, Suite 500 East
Washington, DC 20001
(202) 463-2600
www.nma.org



NMA WEEKLY STATISTICAL SUMMARY

Vol. 61, No. 46 | Dated 11/24/23

PRODUCTION, CONSUMPTION & TRADE

	Week Ended			* Cumulative Jan 1 to		
	11/18/23	11/12/22	% Chg	11/18/23	11/18/22	% Chg
EIA Coal Production (000 Tons):						
Week Ended/Year to Date	11,868	11,547	2.8%	521,962	529,702	-1.5%
52 Weeks Ended	596,310	595,514	0.1%			
<i>Note: the year 2022 has an extra Saturday</i>						
AAR Coal Rail Cars Loaded:	69,630	67,493	3.2%	3,035,947	3,048,718	-0.4%
Coal Production	Oct 23/22		% Chg	Jan - Oct 23/22		% Chg
Month Ended - October	49,074	51,332	-4.4%	491,840	499,729	-1.6%

U.S. Department of Commerce Coal Trade (000 Tons)

	September 23/22		% Chg	Jan - Sep 23/22		% Chg
Coal Exports:						
Metallurgical	4,366	4,270	2.2%	38,603	35,129	9.9%
Steam Bit. *	4,339	2,787	55.7%	34,391	28,439	20.9%
Lignite	5	6	-16.7%	74	60	23.3%
Anthracite	<u>39</u>	<u>27</u>	44.4%	<u>588</u>	<u>334</u>	76.0%
Total	8,749	7,090	23.4%	73,656	63,962	15.2%
Coal Imports:	314	531	-40.9%	3,029	4,928	-38.5%

	Week Ended			Cumulative Week 1 to		
	11/18/23	11/18/22	% Chg	11/18/23	11/19/22	% Chg
EI Electric Total Output (Mil. Kwh)	70,318	76,644	-8.3%	3,621,653	3,672,630	-1.4%
EI Coal Region Output (Mil. Kwh)	60,328	66,287	-9.0%	3,147,747	3,187,699	-1.3%
AISI Raw Steel Output (000 Tons)	1,696	1,594	6.4%	78,701	79,043	-0.4%

EIA AVERAGE COAL & NATURAL GAS SPOT PRICES

Dollars Per Short Ton

Average Coal Spot Prices (\$/Short Ton)	Week Ending			Natural Gas Spot Prices (\$/MMBtu)	
	11/10/23	11/17/23	% Chg	Wed.	11/15/23
Central App, 12,500 Btu, 1.2 SO ₂	\$71.25	\$73.45	-3.0%	Henry Hub	2.87
Northern App, 13,000 Btu, < 3.0 SO ₂	52.05	53.65	-3.0%	New York	2.25
Illinois Basin, 11,800, 5.0 SO ₂	51.00	51.00	0.0%	Chicago	2.55
Powder River Basin, 8,800 Btu 0.8 SO ₂	14.00	13.95	0.4%	Cal.Comp.Avg.	6.11
Uinta Basin, 11,700 Btu, 0.8 SO ₂	29.85	29.75	0.3%		

Coal exports and Imports are "as reported" (not revised); *Steam excludes lignite & anthracite. All data in this report are preliminary and subject to revision. r/ revised.

Sources: EIA; Edison Electric Institute; American Iron & Steel Institute; Association of American Railroads; Dept. of Commerce; S&P Global; NGI's Daily Gas Price Index

EIA Estimated Weekly U.S. Coal Production Overview									
Coal-Producing Region & State (thousand short tons)	Week Ended			Year to Date			52 Weeks Ended		
	11/18/2023 (week 46)	11/11/2023 (week 45)	11/12/2022 (week 46)	11/18/2023	11/18/2022	% Change	11/18/2023	11/12/2022	% Change
Alabama	236	236	203	10,261	9,326	10.0	11,570	10,173	13.7
Alaska	24	23	23	941	884	6.4	1,091	1,006	8.4
Colorado	220	225	235	10,504	11,483	-8.5	12,015	13,085	-8.2
Illinois	759	758	707	34,786	33,605	3.5	39,341	37,055	6.2
Indiana	574	560	498	23,419	20,794	12.6	26,625	22,933	16.1
Kentucky total	605	592	564	26,308	25,327	3.9	29,942	28,421	5.4
Eastern (KY)	266	262	245	11,541	10,677	8.1	13,121	11,914	10.1
Western (KY)	339	330	319	14,767	14,649	0.8	16,821	16,507	1.9
Louisiana	6	6	6	268	271	-1.4	309	304	1.6
Maryland	28	29	30	1,217	1,291	-5.7	1,409	1,418	-0.6
Mississippi	49	53	61	2,367	3,031	-21.9	2,757	3,343	-17.5
Missouri	3	2	2	112	63	76.8	124	65	90.8
Montana	537	531	515	25,042	25,358	-1.2	28,359	28,772	-1.4
New Mexico	167	168	182	7,952	9,536	-16.6	9,121	10,850	-15.9
North Dakota	497	504	483	22,251	24,036	-7.4	25,359	26,841	-5.5
Ohio	35	36	45	1,686	2,240	-24.7	1,978	2,584	-23.5
Oklahoma	s	s	s	2	2	10.1	2	2	s
Pennsylvania total	852	833	816	36,997	35,330	4.7	42,248	39,810	6.1
Anthracite (PA)	58	57	53	2,424	2,190	10.7	2,766	2,464	12.3
Bituminous (PA)	794	776	763	34,572	33,140	4.3	39,482	37,346	5.7
Tennessee	.	.	.	1	s	4.8	1	s	100.0
Texas	294	305	353	12,836	15,113	-15.1	15,109	17,314	-12.7
Utah	142	147	171	6,722	9,769	-31.2	7,823	11,213	-30.2
Virginia	249	246	228	10,446	9,800	6.6	11,912	11,017	8.1
West Virginia total	1,744	1,738	1,626	78,339	74,503	5.1	88,807	83,441	6.4
Northern (WV)	948	940	915	42,217	41,876	0.8	48,108	47,109	2.1
Southern (WV)	796	797	711	36,121	32,627	10.7	40,699	36,332	12.0
Wyoming	4,845	4,804	4,800	209,504	217,939	-3.9	240,409	245,868	-2.2
Appalachian total	3,411	3,380	3,193	150,486	143,167	5.1	171,046	160,358	6.7
Interior total	2,025	2,014	1,946	88,557	87,529	1.2	101,087	97,521	3.7
Western total	6,432	6,403	6,408	282,918	299,007	-5.4	324,177	337,635	-4.0
East of Mississippi River	5,133	5,080	4,778	225,826	215,246	4.9	256,590	240,195	6.8
West of Mississippi River	6,736	6,717	6,769	296,135	314,456	-5.8	339,721	355,319	-4.4
Bituminous and lignite	11,811	11,740	11,494	519,537	527,512	-1.5	593,545	593,050	0.1
Anthracite	58	57	53	2,424	2,190	10.7	2,766	2,464	12.3
U.S. total	11,868	11,797	11,547	521,962	529,702	-1.5	596,310	595,514	0.1
Railroad cars loaded	69,630	69,213	67,493	3,035,947	3,048,718	-0.4	3,470,524	3,431,443	1.1

Source: Energy Information Administration



Weekly Electric Output

Volume 91 No. 46

OUTPUT FOR WEEK ENDED - Nov 18, 2023

Nov 22, 2023

The net available amount of electric energy distributed by the Total Electric Utility Industry* for the week ended Saturday, **Nov 18, 2023** was **70,318** gigawatthours (GWh), according to the Edison Electric Institute. This is equivalent to **175** on the weekly electric output index.

WEEKLY ELECTRIC OUTPUT BY GEOGRAPHIC DIVISION

(48 CONTIGUOUS STATES)

	Week Ended November 18		52 Weeks Ended November 18	
	GWh Output	% Increase Over Corresponding Week of 2022	GWh Output	% Increase Over Corresponding Period of 2022
New England	2,079	-2.1	111,352	-3.8
Mid-Atlantic	7,227	-3.9	404,569	-3.2
Central Industrial	11,458	-9.4	638,934	-2.4
West Central	5,968	-11.3	339,269	-0.4
Southeast	16,807	-11.6	1,010,227	-1.8
South Central	13,909	-8.5	864,756	3.9
Rocky Mountain	4,959	-4.3	294,456	-0.2
Pacific Northwest	3,058	-10.3	160,614	0.0
Pacific Southwest	4,853	0.6	267,748	-2.2
Total United States	70,318	-8.3	4,091,924	-0.7

WEEKLY ELECTRIC OUTPUT IN PREVIOUS WEEKS--GWh

Week Ended	2023	Week Ended	2022	% Inc. (23/22)	52 Weeks Ended	2023	% Inc. (23/22)
Oct 28	71,340	Oct 29	68,883	3.6	Oct 28	4,094,392	-0.5
Nov 04	72,785	Nov 05	69,293	5.0	Nov 04	4,097,883	-0.4
Nov 11	71,033	Nov 12	70,667	0.5	Nov 11	4,098,249	-0.4
Nov 18	70,318	Nov 19	76,644	-8.3	Nov 18	4,091,924	-0.7
Nov 18	3,621,653	Nov 19	3,672,630	-1.4	YEAR TO DATE, FIRST 46 WEEKS		

WEEKLY ELECTRIC OUTPUT INDEX--TOTAL U.S.*

SEASONALLY ADJUSTED 1982 = 100

Week Ended	2023	Week Ended	2022	Week Ended	2021
Oct 28	184	Oct 29	180	Oct 30	177
Nov 04	186	Nov 05	173	Nov 06	173
Nov 11	183	Nov 12	171	Nov 13	166
Nov 18	175	Nov 19	188	Nov 20	174

* Excludes Alaska and Hawaii.

+ Includes investor-owned companies, cooperatives and government-owned utilities.

Copyright © 2023 Edison Electric Institute. All rights reserved.

EEI WEEKLY ELECTRIC OUTPUT BY GEOGRAPHIC DIVISION (48 CONTIGUOUS STATES)

	Week Ended			NMA CUMULATIVE JANUARY WEEK ONE TO			52 Weeks Ended		
	18-Nov	19-Nov	% Increase Over Corresponding Week	18-Nov	19-Nov	% Increase Over Corresponding Week	18-Nov	19-Nov	% Increase Over Corresponding Week
	2023	2022		2023	2022		2023	2022	
	GWh Output	GWh Output		GWh Output	GWh Output		GWh Output	GWh Output	
New England	2,079	2,124	-2.1%	97,733	102,161	-4.3%	111,352	115,777	-3.8%
Mid-Atlantic	7,227	7,523	-3.9%	356,623	371,519	-4.0%	404,569	417,965	-3.2%
Central Industrial	11,458	12,653	-9.4%	563,168	581,859	-3.2%	638,934	654,408	-2.4%
West Central	5,968	6,730	-11.3%	299,726	302,294	-0.8%	339,269	340,721	-0.4%
Southeast	16,807	19,007	-11.6%	893,206	919,531	-2.9%	1,010,227	1,028,777	-1.8%
South Central	13,909	15,193	-8.5%	775,088	750,871	3.2%	864,756	832,621	3.9%
Rocky Mountain	4,959	5,181	-4.3%	259,937	261,625	-0.6%	294,456	295,075	-0.2%
Pacific Northwest	3,058	3,408	-10.3%	138,030	138,775	-0.5%	160,614	160,576	0.0%
Pacific Southwest	4,853	4,825	0.6%	238,143	243,995	-2.4%	267,748	273,742	-2.2%
Total United States ^{1/}	<u>70,318</u>	<u>76,644</u>	-8.3%	<u>3,621,653</u>	<u>3,672,630</u>	-1.4%	<u>4,091,925</u>	<u>4,119,662</u>	-0.7%
Coal Regions Only ^{2/}	60,328	66,287	-9.0%	3,147,747	3,187,699	-1.3%	3,552,211	3,569,567	-0.5%

Notes: EEI output data are an estimate of electricity load made available for distribution derived as weekly net generation + purchases from non-utilities + net imports - exports - sales for resale. It is not meant to be a measure of electricity generation for the U.S. EEI survey data represent the majority of national distribution (large utilities, large government power projects, some independent and large municipal power projects). The remaining segment of the industry (smaller producers) is estimated. Non-utility generation is captured via direct sales to utilities. **Note: the year 2022 has an extra Saturday.**

^{1/} Excludes Alaska and Hawaii

^{2/} Excludes New England and Pacific regions

SOURCE: Edison Electric Institute (EEI), *Weekly Electric Output Report*.

AMERICAN IRON AND STEEL INSTITUTE
 25 Massachusetts Avenue, NW, Suite 800
 Washington, D.C. 20001

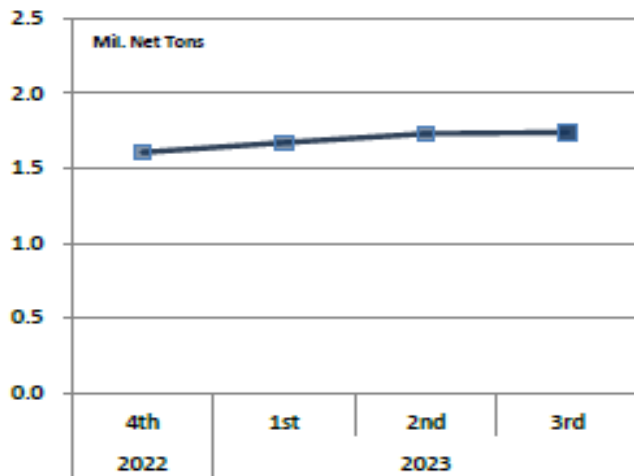
November 20, 2023

ESTIMATED WEEKLY RAW STEEL * PRODUCTION

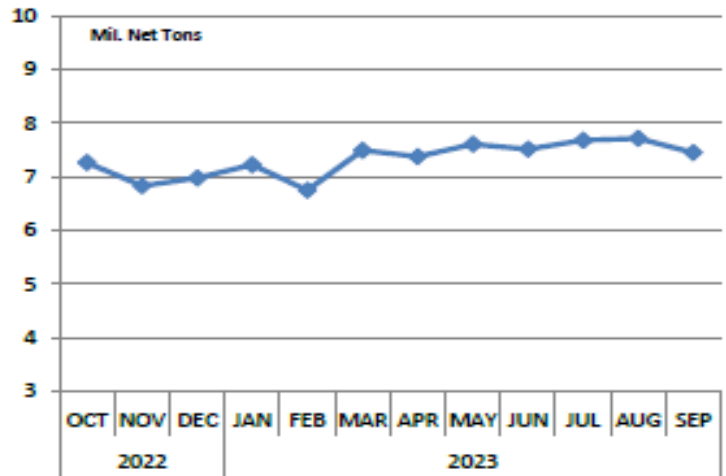
<u>Period</u>	<u>Thousand Net Tons</u>	<u>Percent Change from Previous Period</u>	<u>Percent Capability Utilization**</u>	<u>Production by District</u>		
				<u>Week Ending</u>		
				<u>Nov 18</u>	<u>Nov 11</u>	
<u>Week Ending</u>				North East	129	131
				Great Lakes	548	552
Nov 18, 2023	1,696	0.8	73.8	Midwest	182	176
Nov 18, 2022	1,594	6.4	71.5	Southern	770	755
Nov 11, 2023	1,683	-0.9	73.2	Western	67	69
				Total	1,696	1,683
<u>Year-to-Date +</u>						
Nov 18, 2023	78,701	-0.4	75.7			
Nov 18, 2022	79,043	-	78.1			

*Raw steel production tonnage included in this report is estimated based on a sampling of steel producers (50% of domestic producers). Therefore, this report should be used primarily to assess production trends. The AISI production report "AIS 7," produced monthly and available by subscription, provides a more accurate summary of steel production based on data supplied by companies representing approximately 75% of U.S. production capacity plus includes revisions for previous months.

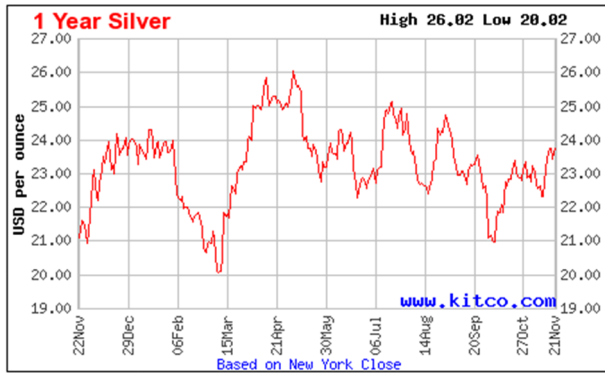
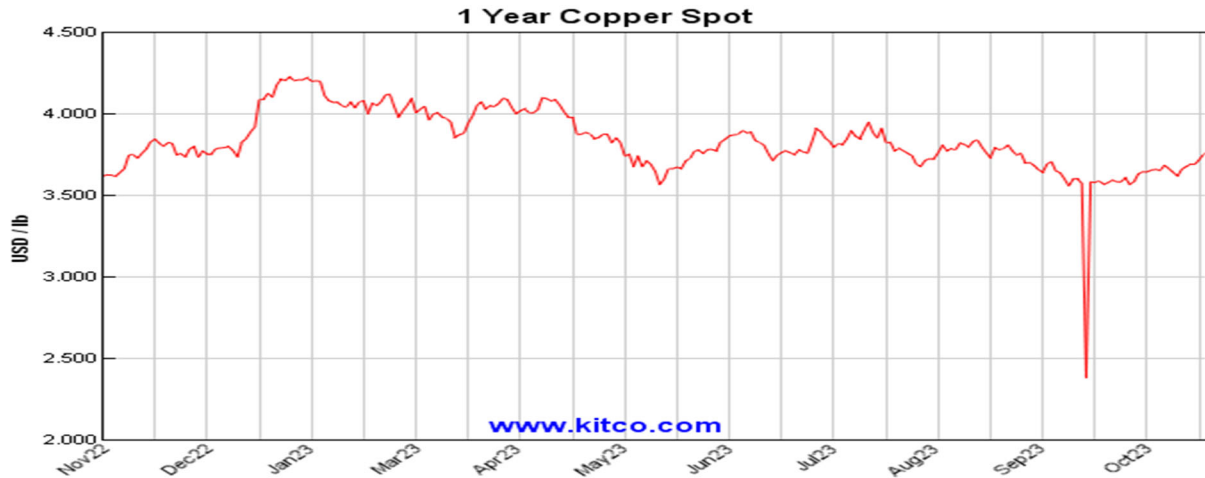
Average Weekly Raw Steel Production



Monthly Raw Steel Production



*Steel in the first solid state after melting suitable for further processing or sale, including ingots, steel for castings and strand or pressure cast blooms, slabs or other product forms. ** Based on tonnage capability to produce raw steel for a sustained full order book.



Source: Kitco website - www.kitco.com/connecting.html

U.S. Rail Traffic¹
 Week 46, 2023 – Ended November 18, 2023

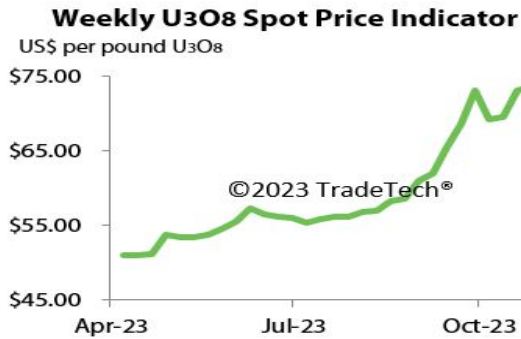
	This Week		Year-To-Date		
	Cars	vs 2022	Cumulative	Avg/wk ²	vs 2022
Total Carloads	237,416	3.8%	10,391,997	225,913	0.2%
Chemicals	32,295	8.5%	1,431,733	31,125	-1.9%
Coal	69,630	4.8%	3,035,931	65,999	-0.5%
Farm Products excl. Grain, and Food	17,525	7.4%	747,521	16,250	1.2%
Forest Products	8,491	4.1%	373,052	8,110	-6.3%
Grain	24,483	-1.9%	858,792	18,669	-11.4%
Metallic Ores and Metals	20,837	-0.3%	952,645	20,710	4.6%
Motor Vehicles and Parts	15,260	12.0%	689,226	14,983	12.5%
Nonmetallic Minerals	31,204	0.2%	1,472,085	32,002	2.7%
Petroleum and Petroleum Products	10,103	8.3%	438,637	9,536	10.6%
Other	7,588	-5.5%	392,375	8,530	-1.8%
Total Intermodal Units	264,000	4.1%	11,193,010	243,326	-6.5%
Total Traffic	501,416	4.0%	21,585,007	469,239	-3.4%

¹ Excludes U.S. operations of CPKC, CN and GMXT.

² Average per week figures may not sum to totals as a result of independent rounding.

Source: AAR website - <https://www.aar.org/Pages/NEWS-and-EVENTS.aspx>

Trade Tech's and UX's Uranium Price Indicators



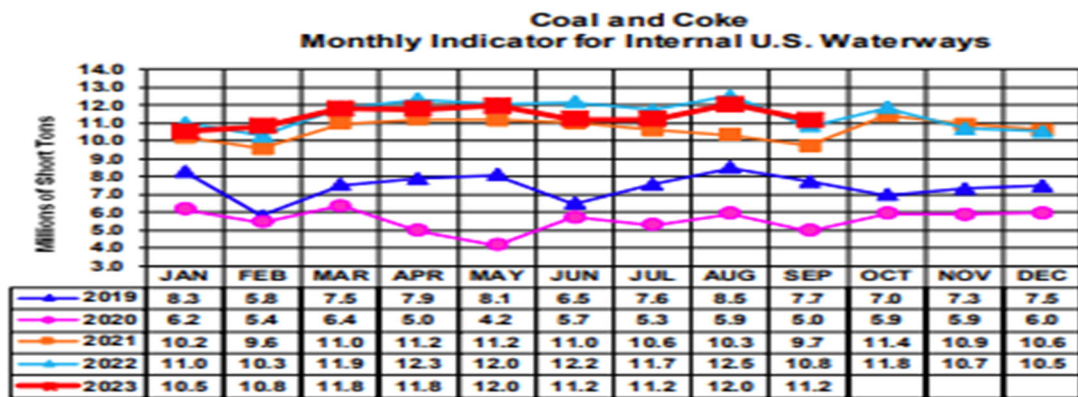
Sources: Trade Tech, Uranium Info Website – www.uranium.info ; Source: Ux Consulting Co., LLC – <http://www.uxc.com>

Coal stocks and average number of days of burn for non-lignite coal by region (electric power sector)

Zone	Coal	September 2023		September 2022			August 2023		
		Stocks (1000 tons)	Days of Burn	Stocks (1000 tons)	Days of Burn	% Change of Stocks	Stocks (1000 tons)	Days of Burn	% Change of Stocks
Northeast	Bituminous	2,163	279	1,925	365	12.4%	2,260	316	-4.3%
	Subbituminous								
South	Bituminous	17,603	136	12,476	108	41.1%	18,921	145	-7.0%
	Subbituminous	5,594	105	3,584	63	56.1%	5,474	99	2.2%
Midwest	Bituminous	12,737	146	7,247	87	75.8%	12,761	137	-0.2%
	Subbituminous	29,159	156	17,096	111	70.6%	29,140	155	0.1%
West	Bituminous	2,647	150	3,029	163	-12.6%	2,807	148	-5.7%
	Subbituminous	29,320	166	15,536	93	88.7%	28,359	155	3.4%
U.S. Total	Bituminous	35,150	143	24,678	110	42.4%	36,749	147	-4.4%
	Subbituminous	64,073	152	36,216	97	76.9%	62,973	148	1.7%

Source: U.S. Energy Information Administration

Source: Energy Information Administration, Electric Monthly Update



For the Internal U.S. Waterway Monthly Indicators, estimates for the most recent month are based on lock performance management data. The estimates will be superseded by actual data as it becomes available.

Source: Waterborne Commerce Statistics Center

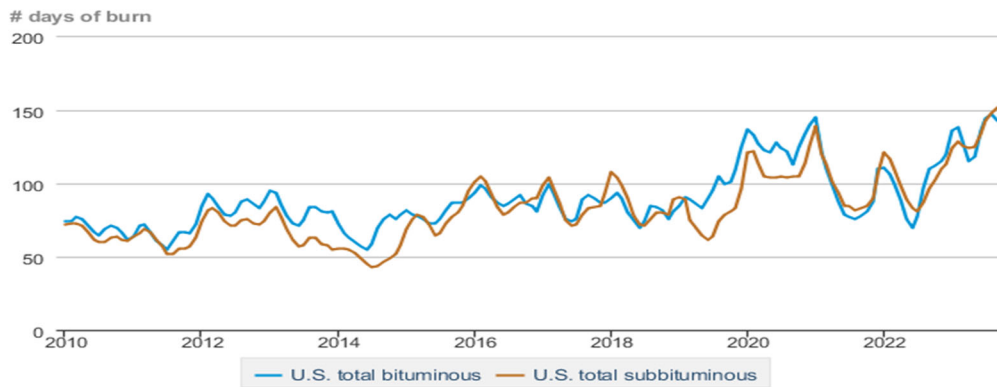
Average weekly coal commodity spot prices
dollars per short ton

	Week ending					Week ago change
	10/20/23	10/27/23	11/03/23	11/10/23	11/17/23	
Central Appalachia 12,500 Btu, 1.2 SO ₂	\$71.25	\$71.25	\$71.25	\$71.25	\$73.45	\$2.20
Northern Appalachia 13,000 Btu, < 3.0 SO ₂	\$50.50	\$50.50	\$52.05	\$52.05	\$53.65	\$1.60
Illinois Basin 11,800 Btu, 5.0 SO ₂	\$48.50	\$48.50	\$51.00	\$51.00	\$51.00	\$0.00
Powder River Basin 8,800 Btu, 0.8 SO ₂	\$14.00	\$14.00	\$14.00	\$14.00	\$13.95	\$-0.05
Uinta Basin 11,700 Btu, 0.8 SO ₂	\$29.85	\$29.85	\$29.85	\$29.85	\$29.75	\$-0.10

Data source: With permission, S&P Global

Source: Energy Information Administration (with permission from S&P Global), *Coal Market Report*

Days of burn by non-lignite coal rank, January 2010 - September 2023



eia Data source: U.S. Energy Information Administration

Source: Energy Information Administration, *Electricity Monthly Update Report*

Temperature – heating & cooling degree days (week ending Nov 09)

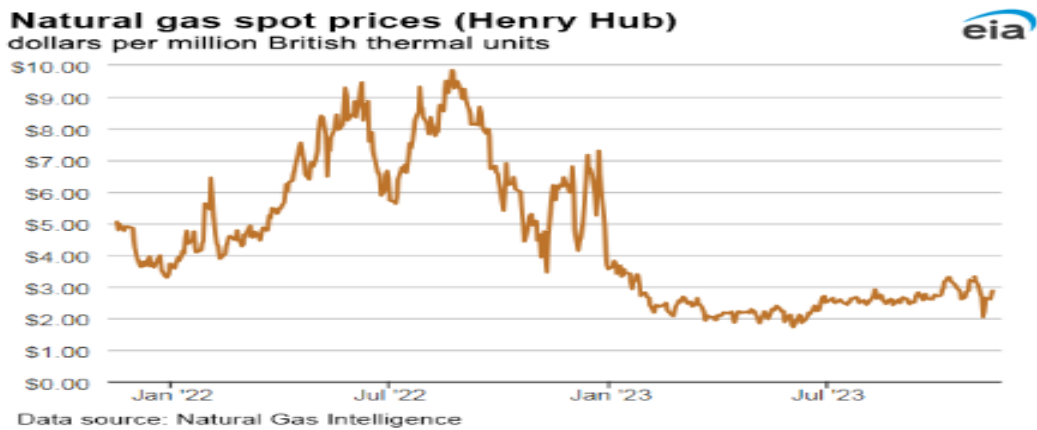
Region	HDDs			CDDs		
	Current total	Deviation from normal	Deviation from last year	Current total	Deviation from normal	Deviation from last year
New England	143	1	69	0	0	-1
Middle Atlantic	123	-11	59	0	0	-1
E N Central	119	-31	39	0	0	0
W N Central	124	-39	2	0	0	0
South Atlantic	69	-16	40	12	-3	-18
E S Central	55	-32	33	2	0	-8
W S Central	26	-26	9	25	15	-7
Mountain	113	-35	-50	6	4	6
Pacific	45	-24	-68	0	-1	0
United States	90	-25	11	6	1	-4

Data source: National Oceanic and Atmospheric Administration
Note: HDDs=heating degree days; CDDs=cooling degree days

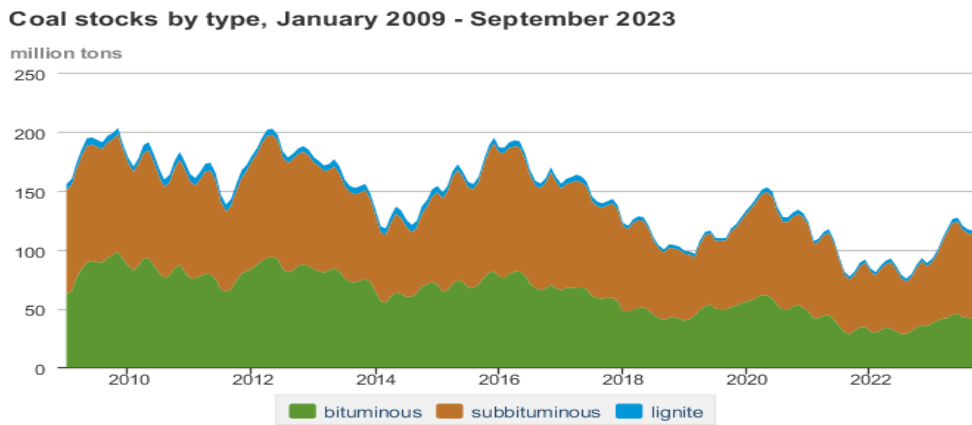
Source: Energy Information Administration, *Natural Gas Weekly Update*.

U.S. Production of Selected Mineral Commodities	2023 Year to Date - 2nd Quarter	2022 Year to Date - 2nd Quarter	Percent Change
Aluminum, secondary (000 Mt.)	453.0	434.0	4%
Cement (Mil. Mt.)	42.5	43.6	-3%
Copper (000 Mt.)	544.0	621.0	-12%
Gold (Mt.)	79.1	83.6	-5%
Gypsum (Mil. Mt.)	9.5	9.0	6%
Iron Ore (Mil. Mt.)	20.7	18.7	11%
Lead (000 Mt.)	140.0	141.0	-1%
Molybdenum (000 Mt.)	16.5	16.5	0%
Palladium (Mt.)	4.8	5.5	-13%
Phosphate rock (Mil. Mt.)	9.9	9.8	1%
Platinum (Mt.)	1.5	1.6	-6%
Sand & gravel, construction (Mil. Mt.)	411.0	437.0	-6%
Silver (Mt.)	538.0	514.0	5%
Soda ash (Mil. Mt.)	5.4	5.5	-2%
Stone, crushed (Mil. Mt.)	712.0	708.0	1%
Zinc (000 Mt.)	366.0	375.0	-2%

Source: U.S. Geological Survey, Mineral Industry Surveys. Percent change based on USGS rounded numbers. 2022 data are preliminary estimates. W - withheld, N/A - not available



Source: Energy Information Administration, *Natural Gas Weekly*.



Source: U.S. Energy Information Administration

Source: Energy Information Administration, *Electricity Monthly Update*

Mining-Related Commodity Prices

Commodity Price - Snapshot		
Metals Prices	Date	Price
Cobalt Spot Price (\$/lb)	11/22/2023	\$15.16
Copper Spot Price (\$/lb)	11/22/2023	\$3.77
Gold Spot Price (\$/ounce)	11/22/2023	\$1,988.12
Lead Spot Price (\$/lb)	11/22/2023	\$1.03
Lithium Spot Price (\$/kg)	11/22/2023	\$19.23
Molybdenum Spot Price (\$/kg)	11/22/2023	\$55.63
Nickel Spot Price (\$/lb)	11/22/2023	\$7.60
Silver Spot Price (\$/ounce)	11/22/2023	\$23.59
Steel HRC Price (\$/mt)	11/22/2023	\$1,033.00
Steel Rebar Price (\$/mt)	11/22/2023	\$557.46
Zinc Spot Price (\$/lb)	11/22/2023	\$1.13
Energy Prices	Date	Price
Coal Price - Australian Premium Coking Coal Futures (\$/mt)	11/22/2023	\$300.50
Coal Spot Price - Central Appalachian (\$/st)	11/17/2023	\$73.45
Coal Spot Price - Newcastle futures (\$/mt)	11/22/2023	\$122.30
Coal Spot Price - Rotterdam futures (\$/mt)	11/22/2023	\$122.50
Natural Gas Spot Price - Henry Hub (\$/mmbtu)	11/15/2023	\$2.87
Uranium Spot Price (\$/lb)	11/20/2023	\$80.25

Sources: publically available data from eia.gov, dailymetalprice.com, tradingeconomics.com, sgxgroup.com, investing.com

EIA Working Natural Gas Underground Storage

Working gas in underground storage

Region	Stocks billion cubic feet (Bcf)		
	2023-11-10	2023-11-03	change
East	931	924	7
Midwest	1,116	1,105	11
Mountain	256	253	3
Pacific	292	284	8
South Central	1,238	1,206	32
Total	3,833	3,773	60

Data source: U.S. Energy Information Administration Form EIA-912. *Weekly Underground Natural Gas Storage Report*
 Note: Totals may not equal sum of components because of independent rounding.

Source: Energy Information Administration, *Natural Gas Weekly Update*

EIA Oil and Natural Gas Rig Productivity

Region	NEW-WELL PRODUCTION PER RIG BY REGION			PRODUCTION BY REGION			DUC WELLS BY REGION		
	New-well oil production per rig barrels/day			New-well gas production per rig thousand cubic feet/day					
	November 2023	December 2023	change	November 2023	December 2023	change			
Anadarko	689	698	9	4,539	4,652	113			
Appalachia	191	191	-	25,014	25,019	5			
Bakken	1,784	1,811	27	2,654	2,694	40			
Eagle Ford	1,529	1,590	61	6,148	6,240	92			
Haynesville	18	18	-	12,772	13,001	229			
Niobrara	1,460	1,469	9	4,158	4,199	41			
Permian	1,289	1,319	30	2,512	2,552	40			
Rig-weighted average	1,123	1,153	30	5,571	5,612	41			

Source: Energy Information Administration, *Drilling Productivity Report*

USGS Cobalt – U.S. Trade, Reported Stocks and Listed Prices

Cobalt - August 2023	Aug-23	Year to Date
U.S. Imports for Consumption - Metals (mt)	426	4,960
U.S. Exports of Cobalt Materials - Cobalt Content (mt)	299	3,410
Reported LME Stocks of Cobalt Metal (mt)	93	-
Listed Prices by Type (\$/lb): US Spot & LME Cash Avg.	17.41	14.85

Source: USGS, Mineral Industry Survey, Cobalt in August, October 2023

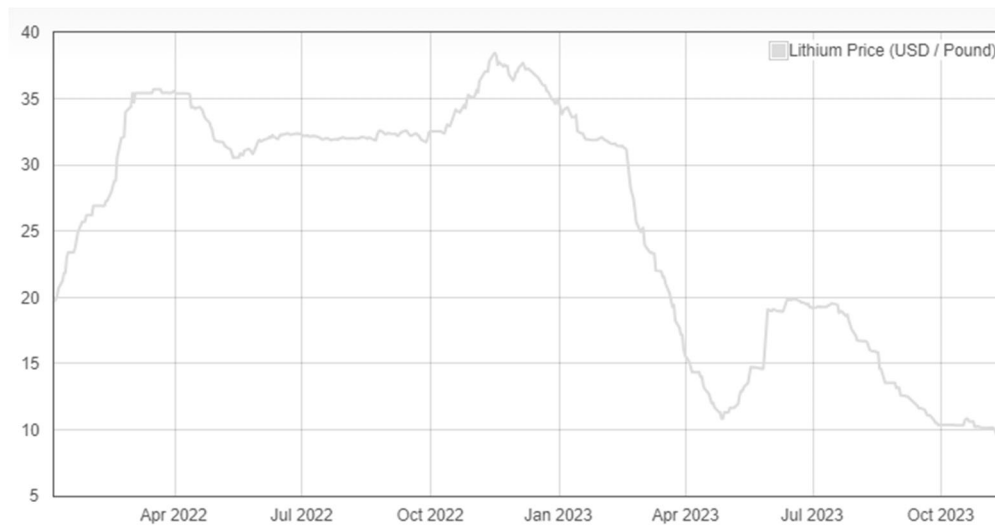
Cobalt and Lithium Prices

Cobalt Prices (US\$/pound):



Source: Dailymetalprice.com - <https://www.dailymetalprice.com/metalpricecharts.php?c=co&u=lb&d=0>

Lithium Prices (US\$/pound):



Source: Dailymetalprice.com - <https://www.dailymetalprice.com/metalpricecharts.php>