



NATIONAL MINING ASSOCIATION

WEEKLY STATISTICAL SUMMARY

December 1, 2023 Edition
(Data for Week Ending November 25, 2023)

Prepared by
National Mining Association

101 Constitution Avenue NW, Suite 500 East
Washington, DC 20001
(202) 463-2600
www.nma.org



NMA WEEKLY STATISTICAL SUMMARY

Vol. 61, No. 47 | Dated 12/01/23

PRODUCTION, CONSUMPTION & TRADE

	Week Ended			* Cumulative Jan 1 to		
	11/25/23	11/19/22	% Chg	11/25/23	11/25/22	% Chg
EIA Coal Production (000 Tons):						
Week Ended/Year to Date	10,460	11,374	-8.0%	532,422	540,370	-1.5%
52 Weeks Ended	595,396	595,742	-0.1%			
<i>Note: the year 2022 has an extra Saturday</i>						
AAR Coal Rail Cars Loaded:	61,369	66,485	-7.7%	3,097,316	3,111,076	-0.4%
Coal Production	Oct 23/22		% Chg	Jan - Oct 23/22		% Chg
Month Ended - October	49,074	51,332	-4.4%	491,840	499,729	-1.6%

U.S. Department of Commerce Coal Trade (000 Tons)

	September 23/22		% Chg	Jan - Sep 23/22		% Chg
Coal Exports:						
Metallurgical	4,366	4,270	2.2%	38,603	35,129	9.9%
Steam Bit. *	4,339	2,787	55.7%	34,391	28,439	20.9%
Lignite	5	6	-16.7%	74	60	23.3%
Anthracite	<u>39</u>	<u>27</u>	44.4%	<u>588</u>	<u>334</u>	76.0%
Total	8,749	7,090	23.4%	73,656	63,962	15.2%
Coal Imports:	314	531	-40.9%	3,029	4,928	-38.5%

	Week Ended			Cumulative Week 1 to		
	11/25/23	11/26/22	% Chg	11/25/23	11/26/22	% Chg
EEl Electric Total Output (Mil. Kwh)	71,126	72,870	-2.4%	3,692,780	3,745,500	-1.4%
EEl Coal Region Output (Mil. Kwh)	61,110	62,808	-2.7%	3,208,857	3,250,507	-1.3%
AISI Raw Steel Output (000 Tons)	1,687	1,594	5.8%	80,388	80,637	-0.3%

EIA AVERAGE COAL & NATURAL GAS SPOT PRICES

Dollars Per Short Ton

Average Coal Spot Prices (\$/Short Ton)	Week Ending			Natural Gas Spot Prices (\$/MMBtu)	
	11/24/23	11/17/23	% Chg	Wed.	11/15/23
Central App, 12,500 Btu, 1.2 SO ₂	\$73.45	\$73.45	0.0%	Henry Hub	2.87
Northern App, 13,000 Btu, < 3.0 SO ₂	53.65	53.65	0.0%	New York	2.25
Illinois Basin, 11,800, 5.0 SO ₂	51.00	51.00	0.0%	Chicago	2.55
Powder River Basin, 8,800 Btu 0.8 SO ₂	13.95	13.95	0.0%	Cal.Comp.Avg.	6.11
Uinta Basin, 11,700 Btu, 0.8 SO ₂	29.75	29.75	0.0%		

Coal exports and Imports are "as reported" (not revised); *Steam excludes lignite & anthracite. All data in this report are preliminary and subject to revision. r/ revised.

Sources: EIA; Edison Electric Institute; American Iron & Steel Institute; Association of American Railroads; Dept. of Commerce; S&P Global; NGI's Daily Gas Price Index

EIA Estimated Weekly U.S. Coal Production Overview									
Coal-Producing Region & State (thousand short tons)	Week Ended			Year to Date			52 Weeks Ended		
	11/25/2023 (week 47)	11/18/2023 (week 46)	11/19/2022 (week 47)	11/25/2023	11/25/2022	% Change	11/25/2023	11/19/2022	% Change
Alabama	212	236	200	10,472	9,514	10.1	11,581	10,223	13.3
Alaska	21	24	23	963	906	6.2	1,089	1,008	8.0
Colorado	199	220	231	10,703	11,700	-8.5	11,983	13,050	-8.2
Illinois	687	759	697	35,473	34,259	3.5	39,331	37,155	5.9
Indiana	498	574	490	23,917	21,254	12.5	26,632	23,045	15.6
Kentucky total	525	605	556	26,832	25,848	3.8	29,911	28,450	5.1
Eastern (KY)	233	266	242	11,774	10,904	8.0	13,113	11,943	9.8
Western (KY)	291	339	314	15,058	14,944	0.8	16,798	16,507	1.8
Louisiana	6	6	6	273	277	-1.4	308	305	1.0
Maryland	26	28	29	1,243	1,318	-5.7	1,406	1,425	-1.3
Mississippi	47	49	60	2,415	3,087	-21.8	2,745	3,349	-18.0
Missouri	2	3	2	114	65	75.4	124	66	87.9
Montana	466	537	507	25,509	25,834	-1.3	28,318	28,712	-1.4
New Mexico	143	167	179	8,095	9,704	-16.6	9,085	10,812	-16.0
North Dakota	449	497	476	22,700	24,482	-7.3	25,333	26,843	-5.6
Ohio	33	35	45	1,719	2,281	-24.7	1,966	2,572	-23.6
Oklahoma	s	s	s	2	2	10.0	2	2	s
Pennsylvania total	747	852	803	37,743	36,083	4.6	42,191	39,851	5.9
Anthracite (PA)	52	58	52	2,477	2,239	10.6	2,766	2,470	12.0
Bituminous (PA)	694	794	751	35,267	33,845	4.2	39,426	37,382	5.5
Tennessee	.	.	.	1	s	4.8	1	s	100.0
Texas	277	294	348	13,113	15,440	-15.1	15,038	17,293	-13.0
Utah	129	142	168	6,851	9,927	-31.0	7,783	11,148	-30.2
Virginia	218	249	224	10,664	10,010	6.5	11,906	11,033	7.9
West Virginia total	1,569	1,744	1,601	79,908	76,005	5.1	88,774	83,521	6.3
Northern (WV)	833	948	901	43,051	42,721	0.8	48,040	47,124	1.9
Southern (WV)	735	796	700	36,857	33,284	10.7	40,734	36,397	11.9
Wyoming	4,209	4,845	4,728	213,713	222,374	-3.9	239,890	245,879	-2.4
Appalachian total	3,037	3,411	3,145	153,524	146,117	5.1	170,938	160,569	6.5
Interior total	1,807	2,025	1,917	90,364	89,327	1.2	100,978	97,722	3.3
Western total	5,616	6,432	6,312	288,534	304,927	-5.4	323,481	337,452	-4.1
East of Mississippi River	4,560	5,133	4,706	230,386	219,660	4.9	256,443	240,625	6.6
West of Mississippi River	5,900	6,736	6,668	302,036	320,710	-5.8	338,953	355,117	-4.6
Bituminous and lignite	10,408	11,811	11,322	529,945	538,132	-1.5	592,631	593,273	-0.1
Anthracite	52	58	52	2,477	2,239	10.6	2,766	2,470	12.0
U.S. total	10,460	11,868	11,374	532,422	540,370	-1.5	595,396	595,742	-0.1
Railroad cars loaded	61,369	69,630	66,485	3,097,316	3,111,076	-0.4	3,465,408	3,433,209	0.9

Source: Energy Information Administration



Weekly Electric Output

Volume 91 No. 47

OUTPUT FOR WEEK ENDED - Nov 25, 2023

Nov 29, 2023

The net available amount of electric energy distributed by the Total Electric Utility Industry* for the week ended Saturday, **Nov 25, 2023** was **71,126** gigawatthours (GWh), according to the Edison Electric Institute. This is equivalent to **179** on the weekly electric output index.

WEEKLY ELECTRIC OUTPUT BY GEOGRAPHIC DIVISION

(48 CONTIGUOUS STATES)

	Week Ended November 25		52 Weeks Ended November 25	
	GWh Output	% Increase Over Corresponding Week of 2022	GWh Output	% Increase Over Corresponding Period of 2022
New England	2,092	-1.6	111,318	-3.8
Mid-Atlantic	7,226	-2.6	404,379	-3.2
Central Industrial	11,352	-2.3	638,662	-2.4
West Central	5,978	0.4	339,295	-0.4
Southeast	16,947	-5.9	1,009,161	-1.9
South Central	14,188	-1.0	864,611	3.7
Rocky Mountain	5,419	-1.0	294,403	-0.3
Pacific Northwest	3,260	-2.4	160,533	-0.1
Pacific Southwest	4,664	1.5	267,818	-2.2
Total United States	71,126	-2.4	4,090,180	-0.7

WEEKLY ELECTRIC OUTPUT IN PREVIOUS WEEKS--GWh

Week Ended	2023	Week Ended	2022	% Inc. (23/22)	52 Weeks Ended	2023	% Inc. (23/22)
Nov 04	72,785	Nov 05	69,293	5.0	Nov 04	4,097,883	-0.4
Nov 11	71,033	Nov 12	70,667	0.5	Nov 11	4,098,249	-0.4
Nov 18	70,318	Nov 19	76,644	-8.3	Nov 18	4,091,924	-0.7
Nov 25	71,126	Nov 26	72,870	-2.4	Nov 25	4,090,181	-0.7
Nov 25	3,692,780	Nov 26	3,745,500	-1.4	YEAR TO DATE, FIRST 47 WEEKS		

WEEKLY ELECTRIC OUTPUT INDEX--TOTAL U.S.*

SEASONALLY ADJUSTED 1982 = 100

Week Ended	2023	Week Ended	2022	Week Ended	2021
Nov 04	186	Nov 05	173	Nov 06	173
Nov 11	183	Nov 12	171	Nov 13	166
Nov 18	175	Nov 19	188	Nov 20	174
Nov 25	179	Nov 26	176	Nov 27	172

* Excludes Alaska and Hawaii.

+ Includes investor-owned companies, cooperatives and government-owned utilities.

Copyright © 2023 Edison Electric Institute. All rights reserved.

EEI WEEKLY ELECTRIC OUTPUT BY GEOGRAPHIC DIVISION (48 CONTIGUOUS STATES)

	Week Ended			NMA CUMULATIVE JANUARY WEEK ONE TO			52 Weeks Ended		
	25-Nov	26-Nov	% Increase Over Corresponding Week	25-Nov	26-Nov	% Increase Over Corresponding Week	25-Nov	26-Nov	% Increase Over Corresponding Week
	2023 GWh Output	2022 GWh Output		2023 GWh Output	2022 GWh Output		2023 GWh Output	2022 GWh Output	
New England	2,092	2,127	-1.6%	99,825	104,288	-4.3%	111,318	115,767	-3.8%
Mid-Atlantic	7,226	7,417	-2.6%	363,849	378,936	-4.0%	404,379	417,833	-3.2%
Central Industrial	11,352	11,624	-2.3%	574,520	593,483	-3.2%	638,662	654,093	-2.4%
West Central	5,978	5,951	0.5%	305,704	308,245	-0.8%	339,295	340,709	-0.4%
Southeast	16,947	18,012	-5.9%	910,153	937,543	-2.9%	1,009,161	1,028,288	-1.9%
South Central	14,188	14,332	-1.0%	789,276	765,203	3.1%	864,611	833,810	3.7%
Rocky Mountain	5,419	5,472	-1.0%	265,356	267,097	-0.7%	294,403	295,227	-0.3%
Pacific Northwest	3,260	3,341	-2.4%	141,290	142,116	-0.6%	160,533	160,727	-0.1%
Pacific Southwest	4,664	4,594	1.5%	242,807	248,589	-2.3%	267,818	273,766	-2.2%
Total United States ^{1/}	<u>71,126</u>	<u>72,870</u>	-2.4%	<u>3,692,779</u>	<u>3,745,500</u>	-1.4%	<u>4,090,180</u>	<u>4,120,220</u>	-0.7%
Coal Regions Only ^{2/}	61,110	62,808	-2.7%	3,208,857	3,250,507	-1.3%	3,550,511	3,569,960	-0.5%

Notes: EEI output data are an estimate of electricity load made available for distribution derived as weekly net generation + purchases from non-utilities + net imports - exports - sales for resale. It is not meant to be a measure of electricity generation for the U.S. EEI survey data represent the majority of national distribution (large utilities, large government power projects, some independent and large municipal power projects). The remaining segment of the industry (smaller producers) is estimated. Non-utility generation is captured via direct sales to utilities. **Note: the year 2022 has an extra Saturday.**

^{1/} Excludes Alaska and Hawaii

^{2/} Excludes New England and Pacific regions

SOURCE: Edison Electric Institute (EEI), *Weekly Electric Output Report*.

AMERICAN IRON AND STEEL INSTITUTE
 25 Massachusetts Avenue, NW, Suite 800
 Washington, D.C. 20001

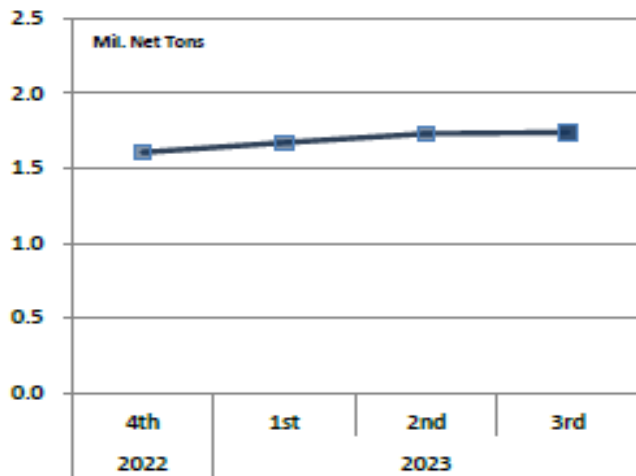
November 27, 2023

ESTIMATED WEEKLY RAW STEEL * PRODUCTION

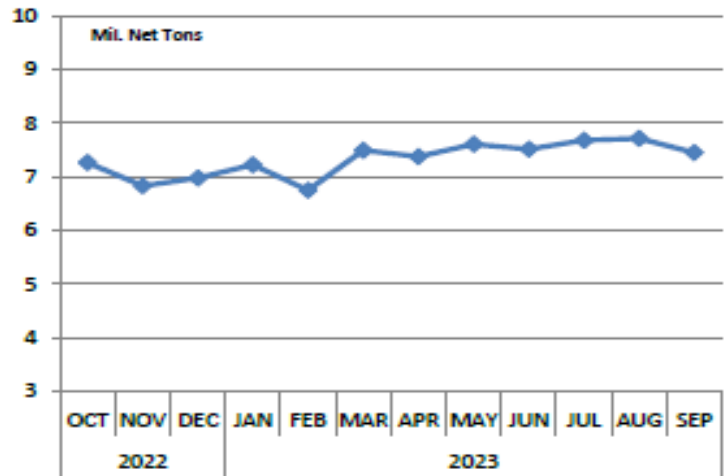
<u>Period</u>	<u>Thousand Net Tons</u>	<u>Percent Change from Previous Period</u>	<u>Percent Capability Utilization**</u>	<u>Production by District</u>		
				<u>Week Ending</u>		
				<u>Nov 25</u>	<u>Nov 18</u>	
<u>Week Ending</u>				North East	123	129
				Great Lakes	553	548
Nov 25, 2023	1,687	-0.5	73.4	Midwest	177	182
Nov 25, 2022	1,594	5.8	71.5	Southern	776	770
Nov 18, 2023	1,696	0.8	73.8	Western	<u>58</u>	<u>67</u>
				Total	1,687	1,696
<u>Year-to-Date +</u>						
Nov 25, 2023	80,388	-0.3	75.7			
Nov 25, 2022	80,637	-	78.1			

*Raw steel production tonnage included in this report is estimated based on a sampling of steel producers (50% of domestic producers). Therefore, this report should be used primarily to assess production trends. The AISI production report "AIS 7," produced monthly and available by subscription, provides a more accurate summary of steel production based on data supplied by companies representing approximately 75% of U.S. production capacity plus includes revisions for previous months.

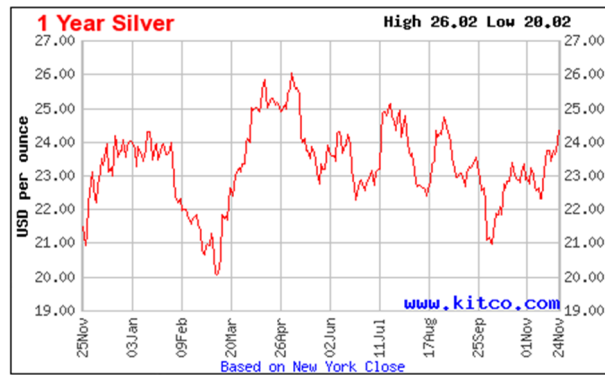
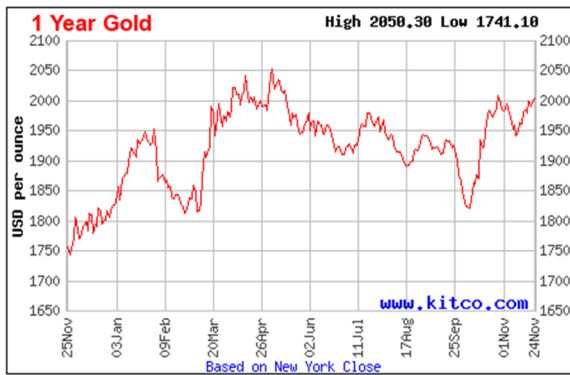
Average Weekly Raw Steel Production



Monthly Raw Steel Production



*Steel in the first solid state after melting suitable for further processing or sale, including ingots, steel for castings and strand or pressure cast blooms, slabs or other product forms. ** Based on tonnage capability to produce raw steel for a sustained full order book.



Source: Kitco website - www.kitco.com/connecting.html

U.S. Rail Traffic¹
Week 47, 2023 – Ended November 25, 2023

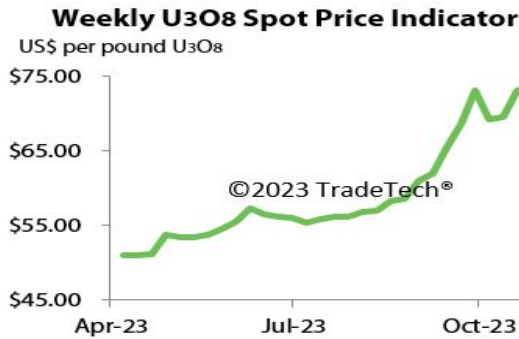
	This Week		Year-To-Date		
	Cars	vs 2022	Cumulative	Avg/wk ²	vs 2022
Total Carloads	195,948	-2.5%	10,587,945	225,275	0.2%
Chemicals	27,582	1.9%	1,459,315	31,049	-1.8%
Coal	61,369	-0.6%	3,097,300	65,900	-0.5%
Farm Products excl. Grain, and Food	14,742	-0.9%	762,263	16,218	1.2%
Forest Products	7,468	3.3%	380,520	8,096	-6.1%
Grain	17,961	-6.9%	876,753	18,654	-11.3%
Metallic Ores and Metals	18,457	5.0%	971,102	20,662	4.6%
Motor Vehicles and Parts	11,946	-2.1%	701,172	14,919	12.2%
Nonmetallic Minerals	21,525	-7.3%	1,493,610	31,779	2.5%
Petroleum and Petroleum Products	8,642	13.6%	447,279	9,517	10.7%
Other	6,256	-37.8%	398,631	8,482	-2.7%
Total Intermodal Units	219,384	7.1%	11,412,394	242,817	-6.3%
Total Traffic	415,332	2.4%	22,000,339	468,092	-3.3%

¹ Excludes U.S. operations of CPKC, CN and GMXT.

² Average per week figures may not sum to totals as a result of independent rounding.

Source: AAR website - <https://www.aar.org/Pages/NEWS-and-EVENTS.aspx>

Trade Tech's and UX's Uranium Price Indicators



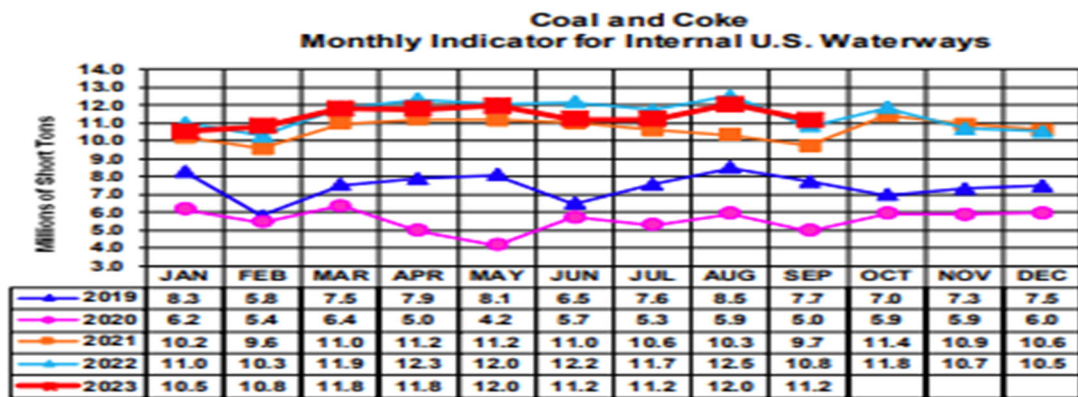
Sources: Trade Tech, Uranium Info Website – www.uranium.info ; Source: Ux Consulting Co., LLC – <http://www.uxc.com>

Coal stocks and average number of days of burn for non-lignite coal by region (electric power sector)

Zone	Coal	September 2023		September 2022			August 2023		
		Stocks (1000 tons)	Days of Burn	Stocks (1000 tons)	Days of Burn	% Change of Stocks	Stocks (1000 tons)	Days of Burn	% Change of Stocks
Northeast	Bituminous	2,163	279	1,925	365	12.4%	2,260	316	-4.3%
	Subbituminous								
South	Bituminous	17,603	136	12,476	108	41.1%	18,921	145	-7.0%
	Subbituminous	5,594	105	3,584	63	56.1%	5,474	99	2.2%
Midwest	Bituminous	12,737	146	7,247	87	75.8%	12,761	137	-0.2%
	Subbituminous	29,159	156	17,096	111	70.6%	29,140	155	0.1%
West	Bituminous	2,647	150	3,029	163	-12.6%	2,807	148	-5.7%
	Subbituminous	29,320	166	15,536	93	88.7%	28,359	155	3.4%
U.S. Total	Bituminous	35,150	143	24,678	110	42.4%	36,749	147	-4.4%
	Subbituminous	64,073	152	36,216	97	76.9%	62,973	148	1.7%

Source: U.S. Energy Information Administration

Source: Energy Information Administration, Electric Monthly Update



For the Internal U.S. Waterway Monthly Indicators, estimates for the most recent month are based on lock performance management data. The estimates will be superseded by actual data as it becomes available.

Source: Waterborne Commerce Statistics Center

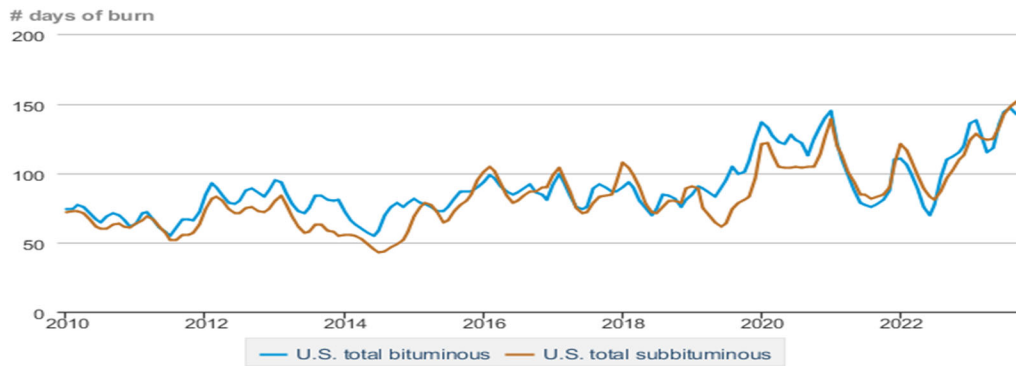
Average weekly coal commodity spot prices
dollars per short ton

	Week ending					Week ago
	10/27/23	11/03/23	11/10/23	11/17/23	11/24/23	change
Central Appalachia 12,500 Btu, 1.2 SO ₂	\$71.25	\$71.25	\$71.25	\$73.45	\$73.45	\$0.00
Northern Appalachia 13,000 Btu, < 3.0 SO ₂	\$50.50	\$52.05	\$52.05	\$53.65	\$53.65	\$0.00
Illinois Basin 11,800 Btu, 5.0 SO ₂	\$48.50	\$51.00	\$51.00	\$51.00	\$51.00	\$0.00
Powder River Basin 8,800 Btu, 0.8 SO ₂	\$14.00	\$14.00	\$14.00	\$13.95	\$13.95	\$0.00
Uinta Basin 11,700 Btu, 0.8 SO ₂	\$29.85	\$29.85	\$29.85	\$29.75	\$29.75	\$0.00

Data source: With permission, S&P Global

Source: Energy Information Administration (with permission from S&P Global), *Coal Market Report*

Days of burn by non-lignite coal rank, January 2010 - September 2023



eia Data source: U.S. Energy Information Administration

Source: Energy Information Administration, *Electricity Monthly Update Report*

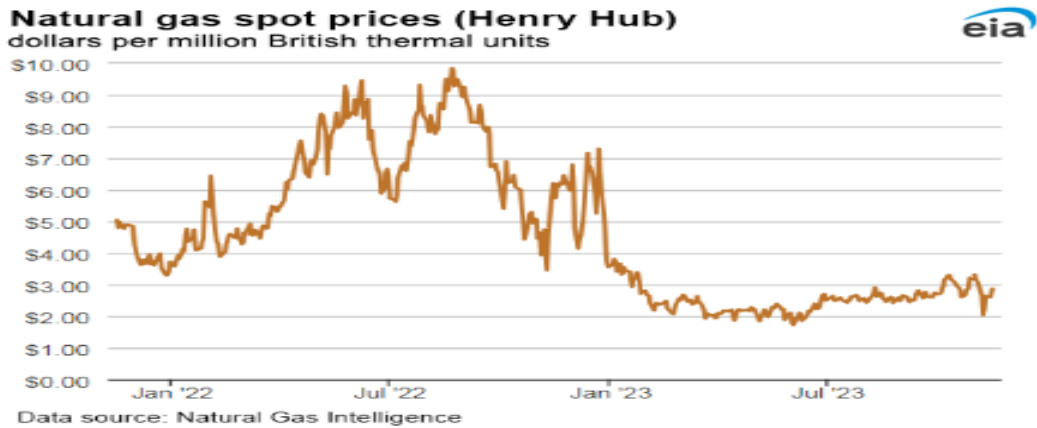
Region	HDDs			CDDs		
	Current total	Deviation from normal	Deviation from last year	Current total	Deviation from normal	Deviation from last year
New England	143	1	69	0	0	-1
Middle Atlantic	123	-11	59	0	0	-1
E N Central	119	-31	39	0	0	0
W N Central	124	-39	2	0	0	0
South Atlantic	69	-16	40	12	-3	-18
E S Central	55	-32	33	2	0	-8
W S Central	26	-26	9	25	15	-7
Mountain	113	-35	-50	6	4	6
Pacific	45	-24	-68	0	-1	0
United States	90	-25	11	6	1	-4

Data source: National Oceanic and Atmospheric Administration
Note: HDDs=heating degree days; CDDs=cooling degree days

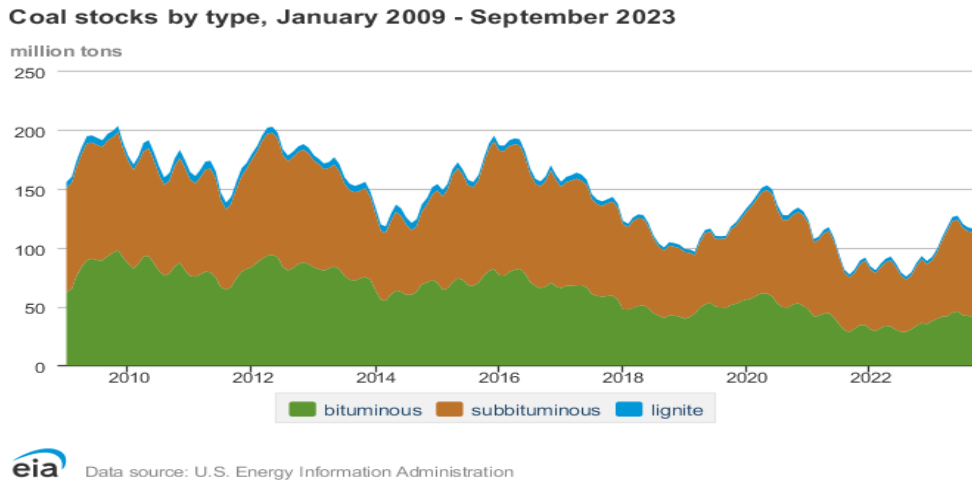
Source: Energy Information Administration, *Natural Gas Weekly Update*.

U.S. Production of Selected Mineral Commodities	2023 Year to Date - 2nd Quarter	2022 Year to Date - 2nd Quarter	Percent Change
Aluminum, secondary (000 Mt.)	453.0	434.0	4%
Cement (Mil. Mt.)	42.5	43.6	-3%
Copper (000 Mt.)	544.0	621.0	-12%
Gold (Mt.)	79.1	83.6	-5%
Gypsum (Mil. Mt.)	9.5	9.0	6%
Iron Ore (Mil. Mt.)	20.7	18.7	11%
Lead (000 Mt.)	140.0	141.0	-1%
Molybdenum (000 Mt.)	16.5	16.5	0%
Palladium (Mt.)	4.8	5.5	-13%
Phosphate rock (Mil. Mt.)	9.9	9.8	1%
Platinum (Mt.)	1.5	1.6	-6%
Sand & gravel, construction (Mil. Mt.)	411.0	437.0	-6%
Silver (Mt.)	538.0	514.0	5%
Soda ash (Mil. Mt.)	5.4	5.5	-2%
Stone, crushed (Mil. Mt.)	712.0	708.0	1%
Zinc (000 Mt.)	366.0	375.0	-2%

Source: U.S. Geological Survey, Mineral Industry Surveys. Percent change based on USGS rounded numbers. 2022 data are preliminary estimates. W - withheld, N/A - not available



Source: Energy Information Administration, *Natural Gas Weekly*.



Source: Energy Information Administration, *Electricity Monthly Update*

Mining-Related Commodity Prices

Commodity Price - Snapshot		
Metals Prices	Date	Price
Cobalt Spot Price (\$/lb)	11/28/23	\$15.15
Copper Spot Price (\$/lb)	11/28/23	\$3.80
Gold Spot Price (\$/ounce)	11/28/23	\$2,014.00
Lead Spot Price (\$/lb)	11/28/23	\$0.97
Lithium Spot Price (\$/kg)	11/28/23	\$17.68
Molybdenum Spot Price (\$/kg)	11/28/23	\$55.63
Nickel Spot Price (\$/lb)	11/28/23	\$7.18
Silver Spot Price (\$/ounce)	11/28/23	\$24.65
Steel HRC Price (\$/mt)	11/29/23	\$1,113.60
Steel Rebar Price (\$/mt)	11/28/23	\$547.71
Zinc Spot Price (\$/lb)	11/28/23	\$1.15
Energy Prices	Date	Price
Coal Price - Australian Premium Coking Coal Futures (\$/mt)	11/28/23	\$327.00
Coal Spot Price - Central Appalachian (\$/st)	11/24/23	\$73.45
Coal Spot Price - Newcastle futures (\$/mt)	11/29/23	\$129.29
Coal Spot Price - Rotterdam futures (\$/mt)	11/29/23	\$115.00
Natural Gas Spot Price - Henry Hub (\$/mmbtu)	11/15/23	\$2.87
Uranium Spot Price (\$/lb)	11/20/23	\$80.25

Sources: publically available data from eia.gov, dailymetalprice.com, tradingeconomics.com, sgxgroup.com, investing.com

EIA Working Natural Gas Underground Storage

Working gas in underground storage

Region	Stocks billion cubic feet (Bcf)		
	2023-11-10	2023-11-03	change
East	931	924	7
Midwest	1,116	1,105	11
Mountain	256	253	3
Pacific	292	284	8
South Central	1,238	1,206	32
Total	3,833	3,773	60

Data source: U.S. Energy Information Administration Form EIA-912. *Weekly Underground Natural Gas Storage Report*
 Note: Totals may not equal sum of components because of independent rounding.

Source: Energy Information Administration, *Natural Gas Weekly Update*

EIA Oil and Natural Gas Rig Productivity

Region	NEW-WELL PRODUCTION PER RIG BY REGION			PRODUCTION BY REGION			DUC WELLS BY REGION		
	New-well oil production per rig barrels/day			New-well gas production per rig thousand cubic feet/day					
	November 2023	December 2023	change	November 2023	December 2023	change			
Anadarko	689	698	9	4,539	4,652	113			
Appalachia	191	191	-	25,014	25,019	5			
Bakken	1,784	1,811	27	2,654	2,694	40			
Eagle Ford	1,529	1,590	61	6,148	6,240	92			
Haynesville	18	18	-	12,772	13,001	229			
Niobrara	1,460	1,469	9	4,158	4,199	41			
Permian	1,289	1,319	30	2,512	2,552	40			
Rig-weighted average	1,123	1,153	30	5,571	5,612	41			

Source: Energy Information Administration, *Drilling Productivity Report*

USGS Cobalt – U.S. Trade, Reported Stocks and Listed Prices

Cobalt - August 2023	Aug-23	Year to Date
U.S. Imports for Consumption - Metals (mt)	426	4,960
U.S. Exports of Cobalt Materials - Cobalt Content (mt)	299	3,410
Reported LME Stocks of Cobalt Metal (mt)	93	-
Listed Prices by Type (\$/lb): US Spot & LME Cash Avg.	17.41	14.85

Source: USGS, Mineral Industry Survey, Cobalt in August, October 2023

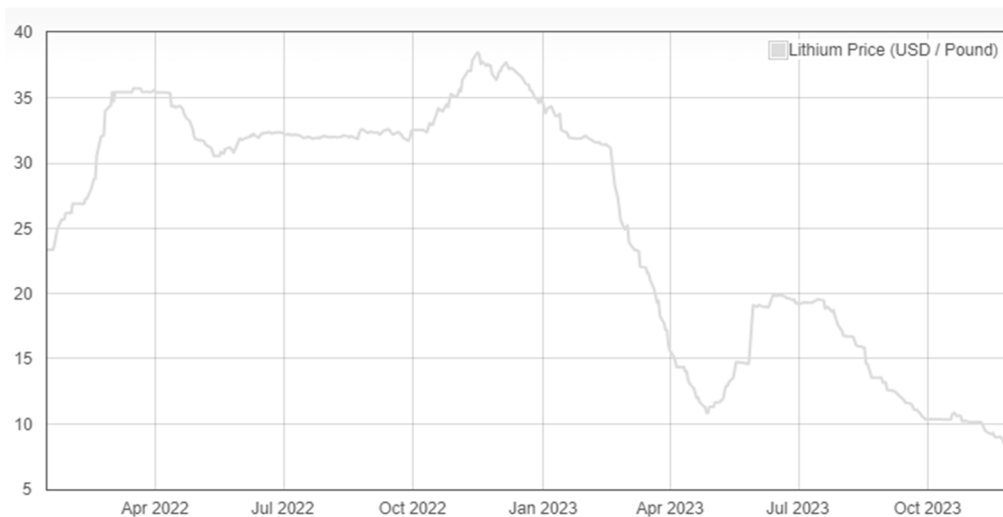
Cobalt and Lithium Prices

Cobalt Prices (US\$/pound):



Source: Dailymetalprice.com - <https://www.dailymetalprice.com/metalpricecharts.php?c=co&u=lb&d=0>

Lithium Prices (US\$/pound):



Source: Dailymetalprice.com - <https://www.dailymetalprice.com/metalpricecharts.php>