



# **NATIONAL MINING ASSOCIATION**

## **WEEKLY STATISTICAL SUMMARY**

**February 16, 2024 Edition**  
(Data for Week Ending February 10, 2024)

Prepared by  
**National Mining Association**

101 Constitution Avenue NW, Suite 500 East  
Washington, DC 20001  
(202) 463-2600  
[www.nma.org](http://www.nma.org)



# NMA WEEKLY STATISTICAL SUMMARY

Vol. 62, No. 6 | Dated 02/16/24

## PRODUCTION, CONSUMPTION & TRADE

	Week Ended			* Cumulative Jan 1 to		
	2/10/24	2/11/23	% Chg	2/10/24	2/10/23	% Chg
EIA Coal Production (000 Tons):						
Week Ended/Year to Date	10,541	11,946	-11.8%	58,088	67,245	-13.6%
52 Weeks Ended	570,904	604,712	-5.6%			
AAR Coal Rail Cars Loaded:	61,908	69,045	-10.3%	342,265	388,678	-11.9%
EIA Coal Production	<b>Jan 24/23</b>		<b>% Chg</b>	<b>Jan - Jan 24/23</b>		<b>% Chg</b>
Month Ended - January	42,950	51,010	-15.8%	42,950	51,010	-15.8%

### U.S. Department of Commerce Coal Trade (000 Tons)

	December 23/22		% Chg	Jan - Dec 23/22		% Chg
Coal Exports:						
Metallurgical	4,203	3,335	26.0%	51,292	46,411	10.5%
Steam Bit. *	4,185	3,204	30.6%	47,689	37,818	26.1%
Lignite	12	8	50.0%	99	84	17.9%
Anthracite	<u>85</u>	<u>74</u>	14.9%	<u>775</u>	<u>507</u>	52.9%
Total	8,485	6,621	28.2%	99,855	84,820	17.7%
Coal Imports:	233	292	-20.2%	4,010	6,314	-36.5%

	Week Ended			Cumulative Week 1 to		
	2/10/24	2/11/23	% Chg	2/10/24	2/11/23	% Chg
EI Electric Total Output (Mil. Kwh)	75,587	75,319	0.4%	489,171	465,967	5.0%
EI Coal Region Output (Mil. Kwh)	65,057	64,980	0.1%	423,948	401,543	5.6%
AISI Raw Steel Output (000 Tons)	1,710	1,800	-5.0%	9,936	10,074	-1.4%

## EIA AVERAGE COAL & NATURAL GAS SPOT PRICES

Dollars Per Short Ton

Average Coal Spot Prices (\$/Short Ton)	Week Ending			Natural Gas Spot Prices (\$/MMBtu)	
	2/09/24	2/02/24	% Chg	Wed.	2/7/24
Central App, 12,500 Btu, 1.2 SO <sub>2</sub>	\$73.25	\$71.00	3.2%	Henry Hub	1.97
Northern App, 13,000 Btu, < 3.0 SO <sub>2</sub>	48.95	47.50	3.1%	New York	1.68
Illinois Basin, 11,800, 5.0 SO <sub>2</sub>	43.00	43.00	0.0%	Chicago	1.67
Powder River Basin, 8,800 Btu 0.8 SO <sub>2</sub>	13.95	14.00	-0.4%	Cal.Comp.Avg.	3.02
Uinta Basin, 11,700 Btu, 0.8 SO <sub>2</sub>	26.90	27.00	-0.4%		

Coal exports and Imports are "as reported" (not revised); \*Steam bit. excludes lignite & anthracite. All data in this report are preliminary and subject to revision. r/ revised.

Sources: EIA; Edison Electric Institute; American Iron & Steel Institute; Association of American Railroads; Dept. of Commerce; S&P Global

<b>EIA Estimated Weekly U.S. Coal Production Overview</b>									
Coal-Producing Region & State (thousand short tons)	Week Ended			Year to Date			52 Weeks Ended		
	2/10/2024 (week 6)	2/3/2024 (week 5)	2/11/2023 (week 6)	2/10/2024	2/10/2023	% Change	2/10/2024	2/11/2023	% Change
Alabama	217	227	222	1,208	1,252	-3.5	11,716	10,733	9.2
Alaska	21	22	23	115	129	-10.5	1,053	1,039	1.3
Colorado	197	196	224	1,086	1,262	-13.9	11,272	12,902	-12.6
Illinois	696	719	791	3,861	4,453	-13.3	36,866	38,477	-4.2
Indiana	484	497	539	2,663	3,035	-12.2	24,618	24,577	0.2
<b>Kentucky total</b>	<b>544</b>	<b>555</b>	<b>612</b>	<b>3,005</b>	<b>3,445</b>	<b>-12.8</b>	<b>28,412</b>	<b>29,218</b>	<b>-2.8</b>
Eastern (KY)	239	241	256	1,322	1,442	-8.3	12,388	12,408	-0.2
Western (KY)	305	314	356	1,683	2,003	-16.0	16,024	16,810	-4.7
Louisiana	6	6	6	30	35	-12.7	307	319	-3.8
Maryland	23	23	26	127	145	-12.4	1,313	1,452	-9.6
Mississippi	37	37	47	201	266	-24.3	2,371	3,352	-29.3
Missouri	3	3	3	17	16	3.4	137	83	65.1
Montana	509	512	556	2,833	3,128	-9.4	27,888	28,699	-2.8
New Mexico	138	142	170	758	957	-20.8	8,385	10,444	-19.7
North Dakota	422	415	540	2,314	3,043	-24.0	23,612	27,050	-12.7
Ohio	31	31	40	167	225	-25.8	1,815	2,442	-25.7
Oklahoma	s	s	s	s	s	20.5	2	2	s
<b>Pennsylvania total</b>	<b>807</b>	<b>817</b>	<b>864</b>	<b>4,456</b>	<b>4,865</b>	<b>-8.4</b>	<b>41,581</b>	<b>40,886</b>	<b>1.7</b>
Anthracite (PA)	57	56	59	311	330	-5.9	2,898	2,593	11.8
Bituminous (PA)	750	761	806	4,145	4,535	-8.6	38,683	38,293	1.0
Tennessee	.	.	.	.	.	.	.	s	.
Texas	240	243	299	1,297	1,685	-23.0	13,736	17,209	-20.2
Utah	113	115	163	611	920	-33.6	6,834	10,399	-34.3
Virginia	212	217	241	1,170	1,357	-13.8	10,951	11,422	-4.1
<b>West Virginia total</b>	<b>1,630</b>	<b>1,669</b>	<b>1,793</b>	<b>9,036</b>	<b>10,093</b>	<b>-10.5</b>	<b>85,130</b>	<b>85,759</b>	<b>-0.7</b>
Northern (WV)	840	850	949	4,642	5,344	-13.1	45,043	47,881	-5.9
Southern (WV)	790	819	844	4,394	4,749	-7.5	40,086	37,878	5.8
Wyoming	4,211	4,247	4,785	23,133	26,935	-14.1	232,907	248,248	-6.2
<b>Appalachian total</b>	<b>3,160</b>	<b>3,224</b>	<b>3,443</b>	<b>17,484</b>	<b>19,379</b>	<b>-9.8</b>	<b>164,894</b>	<b>165,102</b>	<b>-0.1</b>
<b>Interior total</b>	<b>1,771</b>	<b>1,817</b>	<b>2,042</b>	<b>9,753</b>	<b>11,493</b>	<b>-15.1</b>	<b>94,061</b>	<b>100,829</b>	<b>-6.7</b>
<b>Western total</b>	<b>5,610</b>	<b>5,649</b>	<b>6,461</b>	<b>30,851</b>	<b>36,373</b>	<b>-15.2</b>	<b>311,949</b>	<b>338,781</b>	<b>-7.9</b>
<b>East of Mississippi River</b>	<b>4,682</b>	<b>4,790</b>	<b>5,176</b>	<b>25,893</b>	<b>29,136</b>	<b>-11.1</b>	<b>244,772</b>	<b>248,318</b>	<b>-1.4</b>
<b>West of Mississippi River</b>	<b>5,859</b>	<b>5,900</b>	<b>6,770</b>	<b>32,195</b>	<b>38,109</b>	<b>-15.5</b>	<b>326,132</b>	<b>356,395</b>	<b>-8.5</b>
Bituminous and lignite	10,484	10,635	11,887	57,777	66,915	-13.7	568,006	602,119	-5.7
Anthracite	57	56	59	311	330	-5.9	2,898	2,593	11.8
<b>U.S. total</b>	<b>10,541</b>	<b>10,691</b>	<b>11,946</b>	<b>58,088</b>	<b>67,245</b>	<b>-13.6</b>	<b>570,904</b>	<b>604,712</b>	<b>-5.6</b>
Railroad cars loaded	61,908	62,779	69,045	342,265	388,678	-11.9	3,369,280	3,494,357	-3.6

Source: Energy Information Administration



# Weekly Electric Output

Volume 92 No. 6

**OUTPUT FOR WEEK ENDED - Feb 10, 2024**

**Feb 14, 2024**

The net available amount of electric energy distributed by the Total Electric Utility Industry\* for the week ended Saturday, **Feb 10, 2024** was **75,587** gigawatthours (GWh), according to the Edison Electric Institute. This is equivalent to **171** on the weekly electric output index.

**WEEKLY ELECTRIC OUTPUT BY GEOGRAPHIC DIVISION**

(48 CONTIGUOUS STATES)

	Week Ended February 10		52 Weeks Ended February 10	
	GWh Output	% Increase Over Corresponding Week of 2023	GWh Output	% Increase Over Corresponding Period of 2023
New England	2,197	-1.9	111,436	-2.8
Mid-Atlantic	7,833	-0.3	404,462	-2.3
Central Industrial	12,191	-1.8	638,657	-1.9
West Central	6,275	-5.1	337,375	-0.9
Southeast	19,232	4.1	1,014,654	-0.7
South Central	14,099	-1.7	872,165	4.0
Rocky Mountain	5,427	2.9	293,879	-0.8
Pacific Northwest	3,420	0.6	159,467	-0.8
Pacific Southwest	4,913	4.5	267,253	-2.6
Total United States	75,587	0.4	4,099,349	-0.3

**WEEKLY ELECTRIC OUTPUT IN PREVIOUS WEEKS--GWh**

Week Ended	2024	Week Ended	2023	% Inc. (24/23)	52 Weeks Ended	2024	% Inc. (24/23)
Jan 20	94,267	Jan 21	76,887	22.6	Jan 20	4,105,101	-0.4
Jan 27	80,177	Jan 28	79,377	1.0	Jan 27	4,105,901	-0.3
Feb 03	77,013	Feb 04	83,834	-8.1	Feb 03	4,099,080	-0.4
Feb 10	75,587	Feb 11	75,319	0.4	Feb 10	4,099,348	-0.3
<b>Feb 10</b>	<b>489,171</b>	<b>Feb 11</b>	<b>465,967</b>	<b>5.0</b>	<b>YEAR TO DATE, FIRST 6 WEEKS</b>		

**WEEKLY ELECTRIC OUTPUT INDEX--TOTAL U.S.\***

**SEASONALLY ADJUSTED 1982 = 100**

Week Ended	2024	Week Ended	2023	Week Ended	2022
Jan 20	200	Jan 21	176	Jan 22	188
Jan 27	171	Jan 28	183	Jan 29	205
Feb 03	170	Feb 04	196	Feb 05	203
Feb 10	171	Feb 11	178	Feb 12	193

\* Excludes Alaska and Hawaii.

+ Includes investor-owned companies, cooperatives and government-owned utilities.

Copyright © 2024 Edison Electric Institute. All rights reserved.

## EEI WEEKLY ELECTRIC OUTPUT BY GEOGRAPHIC DIVISION (48 CONTIGUOUS STATES)

	Week Ended			NMA CUMULATIVE JANUARY WEEK ONE TO			52 Weeks Ended		
	10-Feb 2024 GWh Output	11-Feb 2023 GWh Output	% Increase Over Corresponding Week	10-Feb 2024 GWh Output	11-Feb 2023 GWh Output	% Increase Over Corresponding Week	10-Feb 2024 GWh Output	11-Feb 2023 GWh Output	% Increase Over Corresponding Week
<b>New England</b>	2,197	2,239	-1.9%	<b>14,250</b>	<b>13,815</b>	<b>3.1%</b>	111,436	114,591	-2.8%
<b>Mid-Atlantic</b>	7,833	7,855	-0.3%	<b>49,860</b>	<b>47,944</b>	<b>4.0%</b>	404,462	414,174	-2.3%
<b>Central Industrial</b>	12,191	12,417	-1.8%	<b>80,187</b>	<b>77,189</b>	<b>3.9%</b>	638,657	651,029	-1.9%
<b>West Central</b>	6,275	6,611	-5.1%	<b>39,866</b>	<b>39,798</b>	<b>0.2%</b>	337,375	340,364	-0.9%
<b>Southeast</b>	19,232	18,476	4.1%	<b>123,642</b>	<b>114,519</b>	<b>8.0%</b>	1,014,654	1,021,937	-0.7%
<b>South Central</b>	14,099	14,348	-1.7%	<b>95,990</b>	<b>87,872</b>	<b>9.2%</b>	872,165	838,271	4.0%
<b>Rocky Mountain</b>	5,427	5,273	2.9%	<b>34,403</b>	<b>34,221</b>	<b>0.5%</b>	293,879	296,150	-0.8%
<b>Pacific Northwest</b>	3,420	3,399	0.6%	<b>21,889</b>	<b>21,213</b>	<b>3.2%</b>	159,467	160,807	-0.8%
<b>Pacific Southwest</b>	4,913	4,701	4.5%	<b>29,082</b>	<b>29,397</b>	<b>-1.1%</b>	267,253	274,267	-2.6%
<b>Total United States <sup>1/</sup></b>	<u>75,587</u>	<u>75,319</u>	0.4%	<u><b>489,169</b></u>	<u><b>465,968</b></u>	<b>5.0%</b>	4,099,348	4,111,590	-0.3%
<b>Coal Regions Only <sup>2/</sup></b>	65,057	64,980	0.1%	<b>423,948</b>	<b>401,543</b>	<b>5.6%</b>	3,561,192	3,561,925	0.0%

**Notes:** EEI output data are an estimate of electricity load made available for distribution derived as weekly net generation + purchases from non-utilities + net imports - exports - sales for resale. It is not meant to be a measure of electricity generation for the U.S. EEI survey data represent the majority of national distribution (large utilities, large government power projects, some independent and large municipal power projects). The remaining segment of the industry (smaller producers) is estimated. Non-utility generation is captured via direct sales to utilities.

<sup>1/</sup> Excludes Alaska and Hawaii

<sup>2/</sup> Excludes New England and Pacific regions

SOURCE: Edison Electric Institute (EEI), *Weekly Electric Output Report*.

AMERICAN IRON AND STEEL INSTITUTE  
 25 Massachusetts Avenue, NW, Suite 800  
 Washington, D.C. 20001

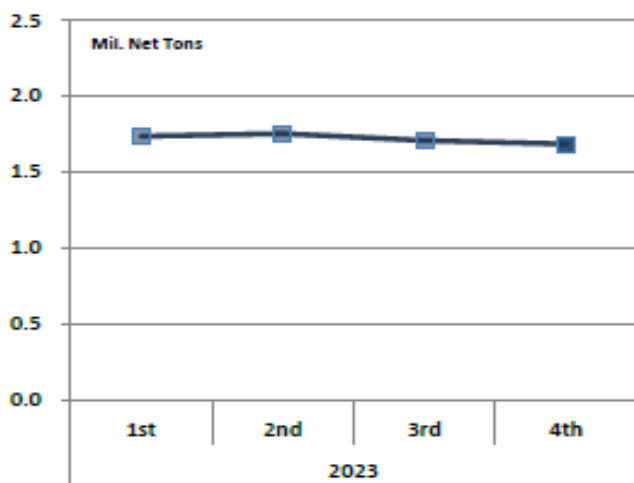
February 12, 2024

**ESTIMATED WEEKLY RAW STEEL \* PRODUCTION**

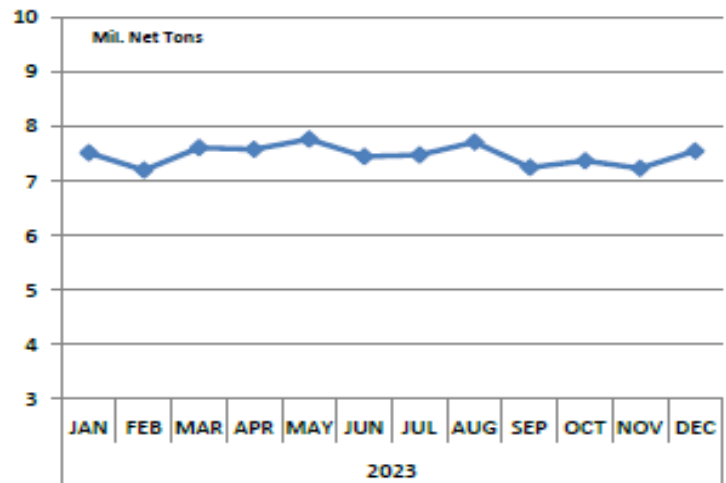
<u>Period</u>	<u>Thousand Net Tons</u>	<u>Percent Change from Previous Period</u>	<u>Percent Capability Utilization**</u>	<u>Production by District</u>		
				<u>Week Ending</u>		
				<u>Feb 10</u>	<u>Feb 3</u>	
<b><u>Week Ending</u></b>				North East	133	136
				Great Lakes	560	562
Feb 10, 2024	1,710	0.5	77.0	Midwest	188	190
Feb 10, 2023	1,800	-5.0	80.5	Southern	759	746
Feb 3, 2024	1,702	1.3	76.6	Western	70	68
				<b>Total</b>	<b>1,710</b>	<b>1,702</b>
<b><u>Year-to-Date +</u></b>						
Feb 10, 2024	9,936	-1.4	76.4			
Feb 10, 2023	10,074	-	78.1			

\*Raw steel production tonnage included in this report is estimated based on a sampling of steel producers (50% of domestic producers). Therefore, this report should be used primarily to assess production trends. The AISI production report "AIS 7," produced monthly and available by subscription, provides a more accurate summary of steel production based on data supplied by companies representing approximately 75% of U.S. production capacity plus includes revisions for previous months.

**Average Weekly Raw Steel Production**



**Monthly Raw Steel Production**



\*Steel in the first solid state after melting suitable for further processing or sale, including ingots, steel for castings and strand or pressure cast blooms, slabs or other product forms. \*\* Based on tonnage capability to produce raw steel for a sustained full order book.

**U.S. Rail Traffic<sup>1</sup>**  
**Week 6, 2024 – Ended February 10, 2024**

	This Week		Year-To-Date		
	Cars	vs 2023	Cumulative	Avg/wk <sup>2</sup>	vs 2023
<b>Total Carloads</b>	<b>220,362</b>	<b>-2.5%</b>	<b>1,245,530</b>	<b>207,588</b>	<b>-6.4%</b>
Chemicals	33,109	5.9%	185,247	30,875	3.4%
Coal	61,908	-10.5%	349,874	58,312	-12.0%
Farm Products excl. Grain, and Food	17,448	2.9%	96,232	16,039	-2.6%
Forest Products	8,208	-0.2%	48,207	8,035	-0.9%
Grain	21,551	8.5%	119,741	19,957	-9.6%
Metallic Ores and Metals	18,474	-0.9%	115,827	19,305	-0.6%
Motor Vehicles and Parts	15,028	13.3%	76,916	12,819	-3.4%
Nonmetallic Minerals	26,637	-10.5%	144,279	24,047	-15.4%
Petroleum and Petroleum Products	9,876	2.9%	59,922	9,987	4.3%
Other	8,123	-11.6%	49,285	8,214	-1.4%
<b>Total Intermodal Units</b>	<b>264,478</b>	<b>11.1%</b>	<b>1,470,492</b>	<b>245,082</b>	<b>6.5%</b>
<b>Total Traffic</b>	<b>484,840</b>	<b>4.5%</b>	<b>2,716,022</b>	<b>452,670</b>	<b>0.2%</b>

<sup>1</sup> Excludes U.S. operations of CPKC, CN and GMXT.

<sup>2</sup> Average per week figures may not sum to totals as a result of independent rounding.

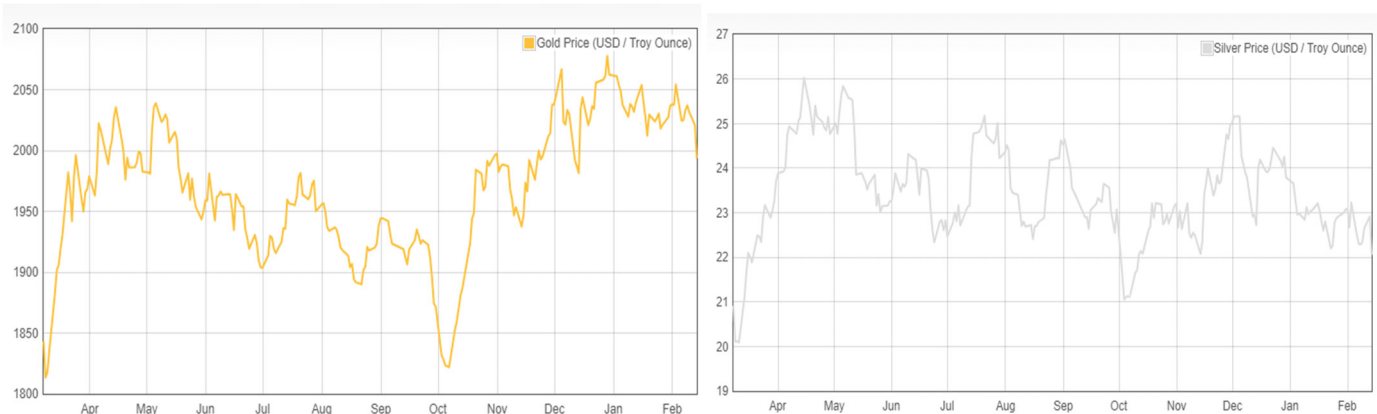
Source: AAR website - <https://www.aar.org/Pages/NEWS-and-EVENTS.aspx>

**Copper, Gold and Silver Prices**

Copper Prices:

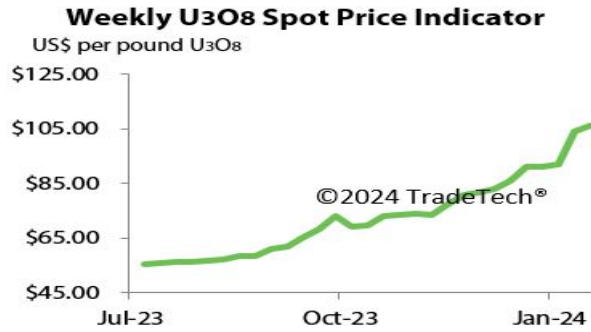


Gold and Silver Prices:



Source: Dailymetalprice.com - <https://www.dailymetalprice.com/metalprices.php>

### Trade Tech’s and UX’s Uranium Price Indicators



Sources: Trade Tech, Uranium Info Website – [www.uranium.info](http://www.uranium.info) ; Source: Ux Consulting Co., LLC – <http://www.uxc.com>

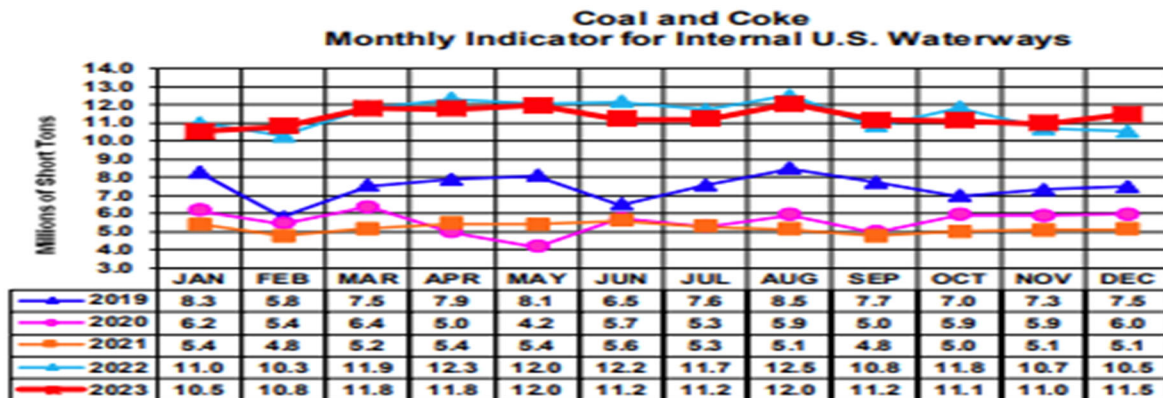
### Coal stocks and average number of days of burn for non-lignite coal by region (electric power sector)

Zone	Coal	November 2023		November 2022			October 2023		
		Stocks (1000 tons)	Days of Burn	Stocks (1000 tons)	Days of Burn	% Change of Stocks	Stocks (1000 tons)	Days of Burn	% Change of Stocks
Northeast	Bituminous	2,442	251	2,579	365	-5.3%	2,211	254	10.5%
	Subbituminous								
South	Bituminous	22,642	165	16,264	122	39.2%	19,586	143	15.6%
	Subbituminous	6,605	113	3,708	65	78.1%	6,131	106	7.7%
Midwest	Bituminous	13,260	148	8,395	84	58.0%	13,003	141	2.0%
	Subbituminous	33,303	179	23,752	140	40.2%	30,663	160	8.6%
West	Bituminous	2,755	190	2,385	157	15.5%	2,634	169	4.6%
	Subbituminous	31,390	183	19,245	106	63.1%	31,412	183	-0.1%
U.S. Total	Bituminous	41,099	164	29,624	115	38.7%	37,433	147	9.8%
	Subbituminous	71,298	173	46,705	110	52.7%	68,205	161	4.5%

Source: U.S. Energy Information Administration

NOTE: Stockpile levels shown above reflect a sample of electric power sector plants, which were used to create the days of burn statistics. These levels will not equal total electric power sector stockpile levels.

Source: Energy Information Administration, Electric Monthly Update



For the Internal U.S. Waterway Monthly Indicators, estimates for the most recent month are based on lock performance management data. The estimates will be superseded by actual data as it becomes available.

Source: Waterborne Commerce Statistics Center

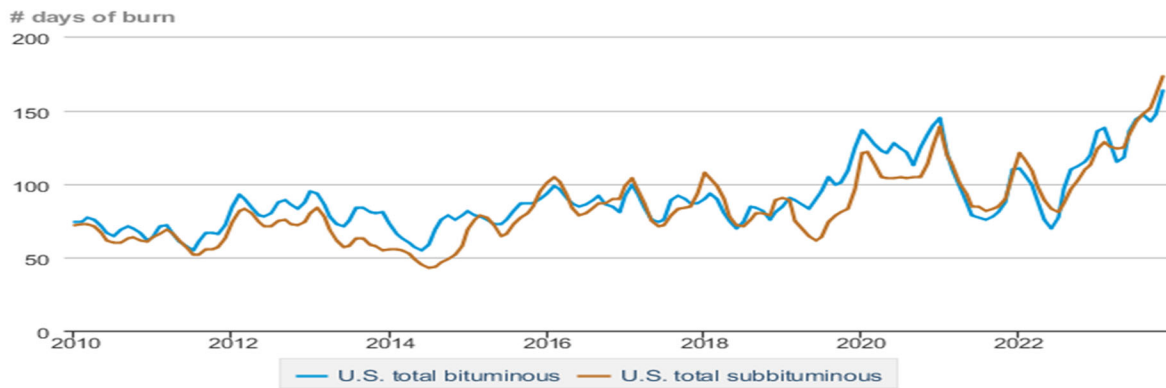
**Average weekly coal commodity spot prices**  
dollars per short ton

	Week ending					Week ago change
	01/12/24	01/19/24	01/26/24	02/02/24	02/09/24	
Central Appalachia 12,500 Btu, 1.2 SO <sub>2</sub>	\$81.05	\$72.00	\$71.00	\$71.00	\$73.25	\$2.25
Northern Appalachia 13,000 Btu, < 3.0 SO <sub>2</sub>	\$53.15	\$48.00	\$47.50	\$47.50	\$48.95	\$1.45
Illinois Basin 11,800 Btu, 5.0 SO <sub>2</sub>	\$44.25	\$44.00	\$43.00	\$43.00	\$43.00	\$0.00
Powder River Basin 8,800 Btu, 0.8 SO <sub>2</sub>	\$13.90	\$14.00	\$14.00	\$14.00	\$13.95	\$-0.05
Uinta Basin 11,700 Btu, 0.8 SO <sub>2</sub>	\$28.20	\$27.25	\$27.00	\$27.00	\$26.90	\$-0.10

Data source: With permission, S&P Global

Source: Energy Information Administration (with permission from S&P Global), *Coal Market Report*

**Days of burn by non-lignite coal rank, January 2010 - November 2023**



 Data source: U.S. Energy Information Administration

Source: Energy Information Administration, *Electricity Monthly Update Report*

**Temperature – heating & cooling degree days (week ending Feb 01)**

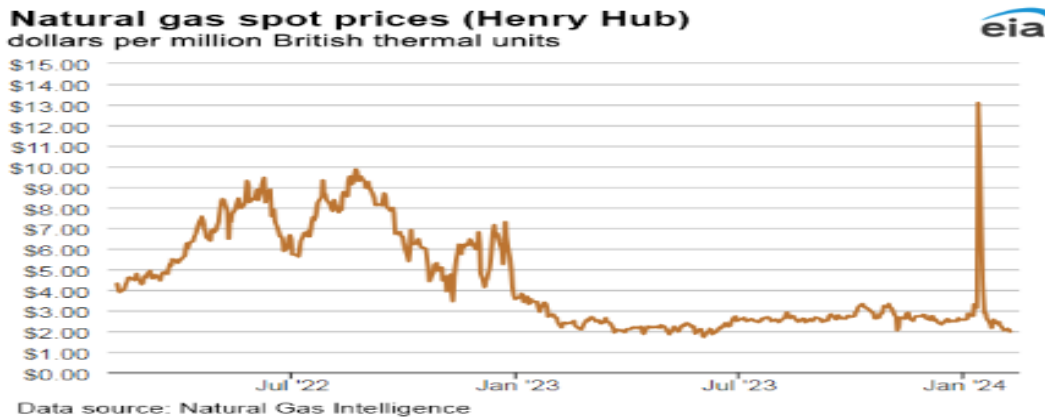
Region	HDDs			CDDs		
	Current total	Deviation from normal	Deviation from last year	Current total	Deviation from normal	Deviation from last year
New England	224	-49	13	0	0	0
Middle Atlantic	208	-54	1	0	0	0
E N Central	202	-90	-94	0	0	0
W N Central	193	-113	-159	0	0	0
South Atlantic	116	-62	-26	5	-3	-3
E S Central	132	-50	-32	0	-1	0
W S Central	89	-43	-77	0	-4	0
Mountain	168	-55	-111	0	-1	0
Pacific	71	-42	-69	0	-1	0
United States	154	-65	-67	1	-1	-1

Data source: National Oceanic and Atmospheric Administration  
Note: HDDs=heating degree days; CDDs=cooling degree days

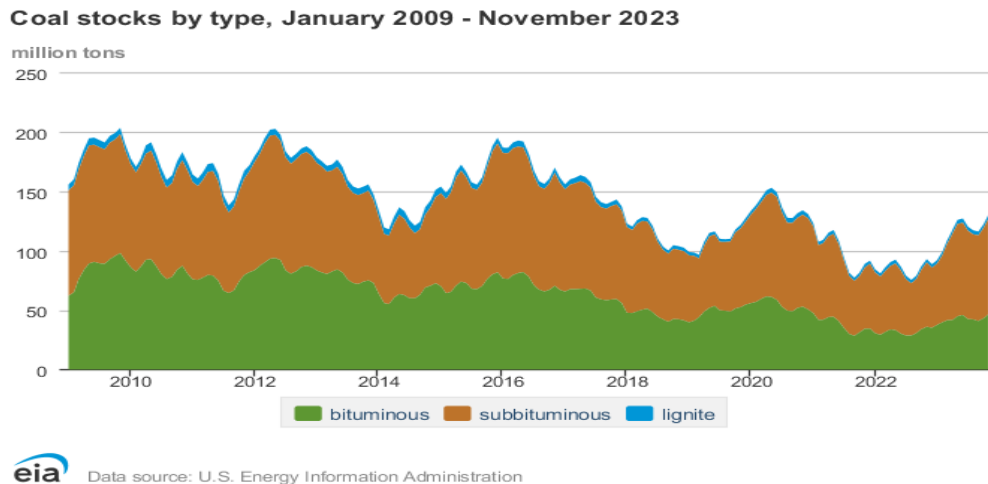
Source: Energy Information Administration, *Natural Gas Weekly Update*.

U.S. Production of Selected Mineral Commodities	2023 Year to Date - 3rd Quarter	2022 Year to Date - 3rd Quarter	Percent Change
Aluminum, secondary (000 Mt.)	686.0	649.0	6%
Cement (Mil. Mt.)	66.9	68.9	-3%
Copper (000 Mt.)	835.0	931.0	-10%
Gold (Mt.)	125.0	126.0	-1%
Gypsum (Mil. Mt.)	14.0	13.8	1%
Iron Ore (Mil. Mt.)	32.0	29.6	8%
Lead (000 Mt.)	201.0	203.0	-1%
Molybdenum (000 Mt.)	25.0	24.4	2%
Palladium (Mt.)	7.4	7.6	-3%
Phosphate rock (Mil. Mt.)	15.0	15.4	-3%
Platinum (Mt.)	2.2	2.3	-4%
Sand & gravel, construction (Mil. Mt.)	698.0	735.0	-5%
Silver (Mt.)	778.0	753.0	3%
Soda ash (Mil. Mt.)	8.1	8.3	-2%
Stone, crushed (Mil. Mt.)	1,170.0	1,180.0	-1%
Zinc (000 Mt.)	543.0	581.0	-7%

Source: U.S. Geological Survey, Mineral Industry Surveys. Percent change based on USGS rounded numbers. 2023 data are preliminary estimates. W - withheld, N/A - not available



Source: Energy Information Administration, *Natural Gas Weekly*.



Source: Energy Information Administration, *Electricity Monthly Update*

### Mining-Related Commodity Prices

Commodity Price - Snapshot		
Metals Prices	Date	Price
Cobalt Spot Price (\$/lb)	2/12/24	\$12.95
Copper Spot Price (\$/lb)	2/13/24	\$3.70
Gold Spot Price (\$/ounce)	2/13/24	\$2,026.20
Lead Spot Price (\$/lb)	2/12/24	\$0.91
Lithium Spot Price (\$/kg)	2/13/24	\$13.55
Molybdenum Spot Price (\$/kg)	2/12/24	\$46.75
Nickel Spot Price (\$/lb)	2/12/24	\$7.15
Silver Spot Price (\$/ounce)	2/13/24	\$22.87
Steel HRC Price (\$/mt)	2/13/24	\$796.21
Steel Rebar Price (\$/mt)	2/8/24	\$542.28
Zinc Spot Price (\$/lb)	2/13/24	\$1.04
Energy Prices	Date	Price
Coal Price - Australian Premium Coking Coal Futures (\$/mt)	2/13/24	\$301.00
Coal Spot Price - Central Appalachian (\$/st)	2/9/24	\$73.25
Coal Spot Price - Newcastle futures (\$/mt)	2/13/24	\$120.30
Coal Spot Price - Rotterdam futures (\$/mt)	2/13/24	\$94.10
Natural Gas Spot Price - Henry Hub (\$/mmbtu)	2/7/23	\$1.97
Uranium Spot Price (\$/lb)	2/5/24	\$106.00

Sources: publically available data from eia.gov, dailymetalprice.com, tradingeconomics.com, sgxgroup.com, investing.com

### EIA Working Natural Gas Underground Storage

Working gas in underground storage

Region	Stocks billion cubic feet (Bcf)		
	2024-02-02	2024-01-26	change
East	568	605	-37
Midwest	689	727	-38
Mountain	183	185	-2
Pacific	228	223	5
South Central	916	919	-3
Total	2,584	2,659	-75

Data source: U.S. Energy Information Administration Form EIA-912, *Weekly Underground Natural Gas Storage Report*  
 Note: Totals may not equal sum of components because of independent rounding.

Source: Energy Information Administration, *Natural Gas Weekly Update*

### EIA Oil and Natural Gas Rig Productivity

Region	NEW-WELL PRODUCTION PER RIG BY REGION			PRODUCTION BY REGION			DUC WELLS BY REGION		
	New-well oil production per rig barrels/day			New-well gas production per rig thousand cubic feet/day					
	February 2024	March 2024	change	February 2024	March 2024	change			
Anadarko	713	714	1	4,739	4,772	33			
Appalachia	235	236	1	27,695	27,950	255			
Bakken	1,717	1,726	9	2,611	2,624	13			
Eagle Ford	1,645	1,650	5	6,057	6,063	6			
Haynesville	15	15	-	13,544	13,571	27			
Niobrara	1,486	1,488	2	4,479	4,523	44			
Permian	1,345	1,358	13	2,503	2,514	11			
Rig-weighted average	1,158	1,172	14	5,939	5,954	15			

Source: Energy Information Administration, *Drilling Productivity Report*

### USGS Cobalt – U.S. Trade, Reported Stocks and Listed Prices

Cobalt - November 2023	Nov-23	Year to Date
U.S. Imports for Consumption - Metals (mt)	842	6,920
U.S. Exports of Cobalt Materials - Cobalt Content (mt)	350	4,750
Reported LME Stocks of Cobalt Metal (mt)	92	-
Listed Prices by Type (\$/lb): US Spot & LME Cash Avg.	18.84	14.86

Source: USGS, Mineral Industry Survey, Cobalt in November 2023, January 2024

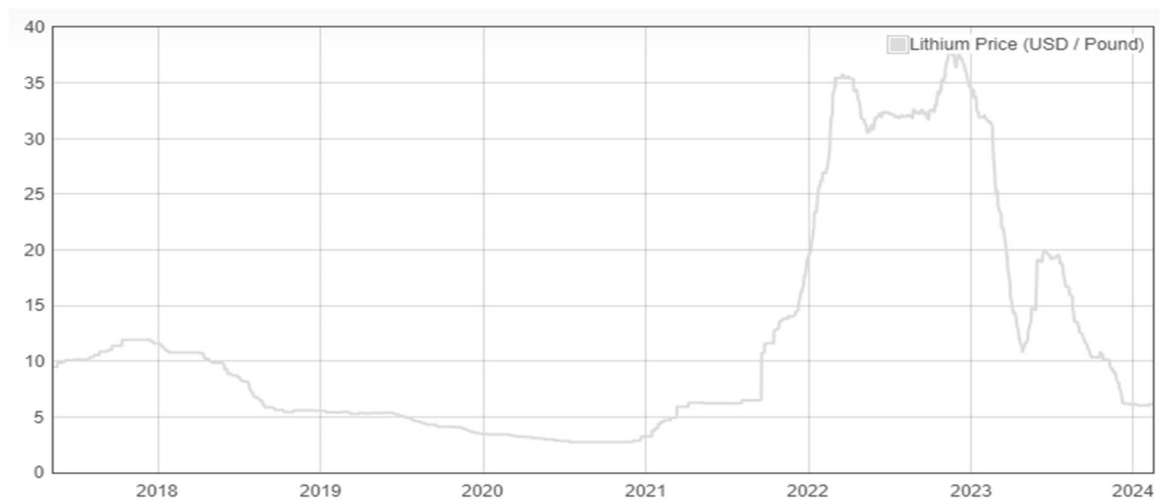
### Cobalt and Lithium Prices

#### Cobalt Prices (US\$/pound):



Source: Dailymetalprice.com - <https://www.dailymetalprice.com/metalpricecharts.php?c=co&u=lb&d=0>

#### Lithium Prices (US\$/pound):



Source: Dailymetalprice.com - <https://www.dailymetalprice.com/metalpricecharts.php>