



NATIONAL MINING ASSOCIATION

WEEKLY STATISTICAL SUMMARY

February 23, 2024 Edition
(Data for Week Ending February 17, 2024)

Prepared by
National Mining Association

101 Constitution Avenue NW, Suite 500 East
Washington, DC 20001
(202) 463-2600
www.nma.org



NMA WEEKLY STATISTICAL SUMMARY

Vol. 62, No. 7 | Dated 02/23/24

PRODUCTION, CONSUMPTION & TRADE

	Week Ended			* Cumulative Jan 1 to		
	2/17/24	2/18/23	% Chg	2/17/24	2/17/23	% Chg
EIA Coal Production (000 Tons):						
Week Ended/Year to Date	10,136	11,517	-12.0%	68,224	78,818	-13.4%
52 Weeks Ended	569,523	603,999	-5.7%			
AAR Coal Rail Cars Loaded:	59,534	66,566	-10.6%	401,799	455,565	-11.8%
EIA Coal Production Month Ended - January	Jan 24/23 42,950	51,010	% Chg -15.8%	Jan - Jan 24/23 42,950	51,010	% Chg -15.8%

U.S. Department of Commerce Coal Trade (000 Tons)

	December 23/22		% Chg	Jan - Dec 23/22		% Chg
Coal Exports:						
Metallurgical	4,203	3,335	26.0%	51,292	46,411	10.5%
Steam Bit. *	4,185	3,204	30.6%	47,689	37,818	26.1%
Lignite	12	8	50.0%	99	84	17.9%
Anthracite	<u>85</u>	<u>74</u>	14.9%	<u>775</u>	<u>507</u>	52.9%
Total	8,485	6,621	28.2%	99,855	84,820	17.7%
Coal Imports:	233	292	-20.2%	4,010	6,314	-36.5%

	Week Ended			Cumulative Week 1 to		
	2/17/24	2/18/23	% Chg	2/17/24	2/18/23	% Chg
EEI Electric Total Output (Mil. Kwh)	76,416	75,037	1.8%	565,586	541,004	4.5%
EEI Coal Region Output (Mil. Kwh)	65,958	64,661	2.0%	489,906	466,204	5.1%
AISI Raw Steel Output (000 Tons)	1,721	1,800	-4.4%	11,657	11,873	-1.8%

EIA AVERAGE COAL & NATURAL GAS SPOT PRICES

Dollars Per Short Ton

Average Coal Spot Prices (\$/Short Ton)	Week Ending			Natural Gas Spot Prices (\$/MMBtu)	
	2/16/24	2/09/24	% Chg	Wed.	2/14/24
Central App, 12,500 Btu, 1.2 SO ₂	\$73.25	\$73.25	0.0%	Henry Hub	1.51
Northern App, 13,000 Btu, < 3.0 SO ₂	48.95	48.95	0.0%	New York	1.40
Illinois Basin, 11,800, 5.0 SO ₂	43.00	43.00	0.0%	Chicago	1.49
Powder River Basin, 8,800 Btu 0.8 SO ₂	13.95	13.95	0.0%	Cal.Comp.Avg.	2.44
Uinta Basin, 11,700 Btu, 0.8 SO ₂	26.90	26.90	0.0%		

Coal exports and Imports are "as reported" (not revised); *Steam bit. excludes lignite & anthracite. All data in this report are preliminary and subject to revision. r/ revised.

Sources: EIA; Edison Electric Institute; American Iron & Steel Institute; Association of American Railroads; Dept. of Commerce; S&P Global

EIA Estimated Weekly U.S. Coal Production Overview									
Coal-Producing Region & State (thousand short tons)	Week Ended			Year to Date			52 Weeks Ended		
	2/17/2024 (week 7)	2/10/2024 (week 6)	2/18/2023 (week 7)	2/17/2024	2/17/2023	% Change	2/17/2024	2/18/2023	% Change
Alabama	208	217	214	1,416	1,467	-3.5	11,710	10,736	9.1
Alaska	20	21	22	135	151	-10.7	1,050	1,039	1.1
Colorado	194	197	216	1,281	1,480	-13.4	11,250	12,870	-12.6
Illinois	669	696	763	4,530	5,220	-13.2	36,772	38,476	-4.4
Indiana	457	484	520	3,120	3,557	-12.3	24,555	24,655	-0.4
Kentucky total	523	544	590	3,528	4,038	-12.6	28,345	29,223	-3.0
Eastern (KY)	233	239	247	1,555	1,690	-8.0	12,374	12,421	-0.4
Western (KY)	290	305	343	1,973	2,348	-16.0	15,971	16,802	-4.9
Louisiana	5	6	6	36	41	-12.9	307	320	-4.1
Maryland	22	23	25	149	170	-12.1	1,311	1,445	-9.3
Mississippi	35	37	46	237	312	-24.2	2,361	3,337	-29.2
Missouri	3	3	3	20	19	3.9	138	85	62.4
Montana	509	509	536	3,342	3,666	-8.8	27,861	28,660	-2.8
New Mexico	130	138	164	888	1,121	-20.8	8,351	10,380	-19.5
North Dakota	413	422	521	2,726	3,566	-23.6	23,503	26,985	-12.9
Ohio	29	31	38	196	263	-25.7	1,805	2,422	-25.5
Oklahoma	s	s	s	s	s	23.1	2	2	s
Pennsylvania total	782	807	833	5,237	5,703	-8.2	41,529	40,884	1.6
Anthracite (PA)	55	57	57	366	387	-5.4	2,896	2,601	11.3
Bituminous (PA)	726	750	777	4,871	5,316	-8.4	38,633	38,284	0.9
Tennessee	s	.
Texas	218	240	289	1,515	1,975	-23.3	13,665	17,162	-20.4
Utah	102	113	158	713	1,079	-33.9	6,778	10,291	-34.1
Virginia	203	212	232	1,372	1,591	-13.8	10,921	11,437	-4.5
West Virginia total	1,580	1,630	1,729	10,616	11,830	-10.3	84,981	85,777	-0.9
Northern (WV)	816	840	915	5,458	6,264	-12.9	44,944	47,837	-6.0
Southern (WV)	764	790	813	5,158	5,567	-7.3	40,037	37,940	5.5
Wyoming	4,034	4,211	4,613	27,167	31,570	-13.9	232,328	247,813	-6.2
Appalachian total	3,057	3,160	3,319	20,541	22,714	-9.6	164,631	165,122	-0.3
Interior total	1,677	1,771	1,968	11,431	13,471	-15.1	93,770	100,840	-7.0
Western total	5,402	5,610	6,229	36,252	42,633	-15.0	311,121	338,038	-8.0
East of Mississippi River	4,508	4,682	4,990	30,401	34,150	-11.0	244,290	248,393	-1.7
West of Mississippi River	5,628	5,859	6,527	37,822	44,667	-15.3	325,233	355,606	-8.5
Bituminous and lignite	10,080	10,484	11,460	67,858	78,431	-13.5	566,626	601,398	-5.8
Anthracite	55	57	57	366	387	-5.4	2,896	2,601	11.3
U.S. total	10,136	10,541	11,517	68,224	78,818	-13.4	569,523	603,999	-5.7
Railroad cars loaded	59,534	61,908	66,566	401,799	455,565	-11.8	3,362,248	3,491,902	-3.7

Source: Energy Information Administration

EEI

Weekly Electric Output

Volume 92 No. 7

OUTPUT FOR WEEK ENDED - Feb 17, 2024

Feb 22, 2024

The net available amount of electric energy distributed by the Total Electric Utility Industry* for the week ended Saturday, **Feb 17, 2024** was **76,416** gigawatthours (GWh), according to the Edison Electric Institute. This is equivalent to **174** on the weekly electric output index.

WEEKLY ELECTRIC OUTPUT BY GEOGRAPHIC DIVISION
(48 CONTIGUOUS STATES)

	Week Ended February 17		52 Weeks Ended February 17	
	GWh Output	% Increase Over Corresponding Week of 2023	GWh Output	% Increase Over Corresponding Period of 2023
New England	2,272	8.1	111,606	-2.3
Mid-Atlantic	8,099	8.5	405,099	-1.9
Central Industrial	12,713	4.1	639,155	-1.6
West Central	6,274	-0.3	337,359	-0.8
Southeast	18,604	1.2	1,014,878	-0.6
South Central	14,790	0.3	872,215	4.0
Rocky Mountain	5,478	-1.7	293,783	-0.9
Pacific Northwest	3,473	-1.3	159,421	-1.0
Pacific Southwest	4,713	-0.9	267,211	-2.6
Total United States	76,416	1.8	4,100,727	-0.2

WEEKLY ELECTRIC OUTPUT IN PREVIOUS WEEKS--GWh

Week Ended	2024	Week Ended	2023	% Inc. (24/23)	52 Weeks Ended	2024	% Inc. (24/23)
Jan 27	80,177	Jan 28	79,377	1.0	Jan 27	4,105,901	-0.3
Feb 03	77,013	Feb 04	83,834	-8.1	Feb 03	4,099,080	-0.4
Feb 10	75,587	Feb 11	75,319	0.4	Feb 10	4,099,348	-0.3
Feb 17	76,416	Feb 18	75,037	1.8	Feb 17	4,100,727	-0.2
Feb 17	565,586	Feb 18	541,004	4.5	YEAR TO DATE, FIRST 7 WEEKS		

WEEKLY ELECTRIC OUTPUT INDEX--TOTAL U.S.*
SEASONALLY ADJUSTED 1982 = 100

Week Ended	2024	Week Ended	2023	Week Ended	2022
Jan 27	171	Jan 28	183	Jan 29	205
Feb 03	170	Feb 04	196	Feb 05	203
Feb 10	171	Feb 11	178	Feb 12	193
Feb 17	174	Feb 18	178	Feb 19	194

* Excludes Alaska and Hawaii.

+ Includes investor-owned companies, cooperatives and government-owned utilities.

Copyright © 2024 Edison Electric Institute. All rights reserved.

EEI WEEKLY ELECTRIC OUTPUT BY GEOGRAPHIC DIVISION (48 CONTIGUOUS STATES)

	Week Ended			NMA CUMULATIVE JANUARY WEEK ONE TO			52 Weeks Ended		
	17-Feb 2024 GWh Output	18-Feb 2023 GWh Output	% Increase Over Corresponding Week	17-Feb 2024 GWh Output	18-Feb 2023 GWh Output	% Increase Over Corresponding Week	17-Feb 2024 GWh Output	18-Feb 2023 GWh Output	% Increase Over Corresponding Week
New England	2,272	2,102	8.1%	16,522	15,917	3.8%	111,606	114,291	-2.3%
Mid-Atlantic	8,099	7,462	8.5%	57,959	55,406	4.6%	405,099	413,023	-1.9%
Central Industrial	12,713	12,215	4.1%	92,900	89,404	3.9%	639,155	649,629	-1.6%
West Central	6,274	6,290	-0.3%	46,140	46,088	0.1%	337,359	339,985	-0.8%
Southeast	18,604	18,379	1.2%	142,246	132,898	7.0%	1,014,878	1,020,505	-0.6%
South Central	14,790	14,741	0.3%	110,780	102,613	8.0%	872,215	838,589	4.0%
Rocky Mountain	5,478	5,574	-1.7%	39,881	39,795	0.2%	293,783	296,410	-0.9%
Pacific Northwest	3,473	3,519	-1.3%	25,362	24,732	2.5%	159,421	161,015	-1.0%
Pacific Southwest	4,713	4,755	-0.9%	33,795	34,152	-1.0%	267,211	274,406	-2.6%
Total United States ^{1/}	<u>76,416</u>	<u>75,037</u>	1.8%	<u>565,585</u>	<u>541,005</u>	4.5%	<u>4,100,727</u>	<u>4,107,853</u>	-0.2%
Coal Regions Only ^{2/}	65,958	64,661	2.0%	489,906	466,204	5.1%	3,562,489	3,558,141	0.1%

Notes: EEI output data are an estimate of electricity load made available for distribution derived as weekly net generation + purchases from non-utilities + net imports - exports - sales for resale. It is not meant to be a measure of electricity generation for the U.S. EEI survey data represent the majority of national distribution (large utilities, large government power projects, some independent and large municipal power projects). The remaining segment of the industry (smaller producers) is estimated. Non-utility generation is captured via direct sales to utilities.

^{1/} Excludes Alaska and Hawaii

^{2/} Excludes New England and Pacific regions

SOURCE: Edison Electric Institute (EEI), *Weekly Electric Output Report*.

AMERICAN IRON AND STEEL INSTITUTE
 25 Massachusetts Avenue, NW, Suite 800
 Washington, D.C. 20001

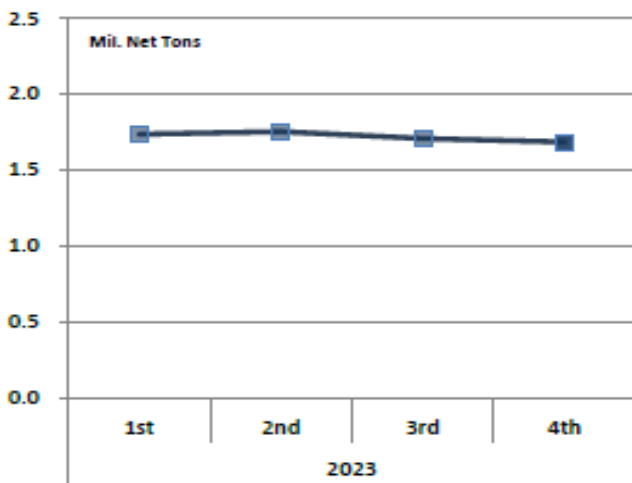
February 19, 2024

ESTIMATED WEEKLY RAW STEEL * PRODUCTION

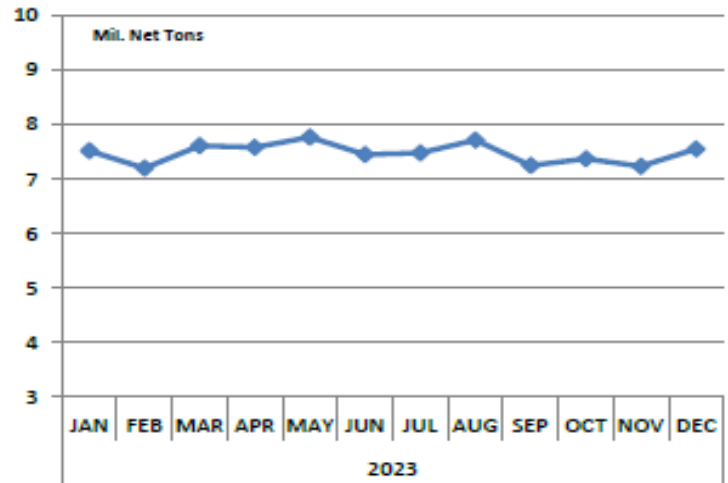
<u>Period</u>	<u>Thousand Net Tons</u>	<u>Percent Change from Previous Period</u>	<u>Percent Capability Utilization**</u>	<u>Production by District</u>		
				<u>Week Ending</u>		
				<u>Feb 17</u>	<u>Feb 10</u>	
<u>Week Ending</u>				North East	127	133
				Great Lakes	558	560
Feb 17, 2024	1,721	0.6	77.5	Midwest	190	188
Feb 17, 2023	1,800	-4.4	80.5	Southern	777	759
Feb 10, 2024	1,710	0.5	77.0	Western	69	70
				Total	1,721	1,710
<u>Year-to-Date +</u>						
Feb 17, 2024	11,657	-1.8	76.5			
Feb 17, 2023	11,873	-	78.1			

*Raw steel production tonnage included in this report is estimated based on a sampling of steel producers (50% of domestic producers). Therefore, this report should be used primarily to assess production trends. The AISI production report "AIS 7," produced monthly and available by subscription, provides a more accurate summary of steel production based on data supplied by companies representing approximately 75% of U.S. production capacity plus includes revisions for previous months.

Average Weekly Raw Steel Production



Monthly Raw Steel Production



*Steel in the first solid state after melting suitable for further processing or sale, including ingots, steel for castings and strand or pressure cast blooms, slabs or other product forms. ** Based on tonnage capability to produce raw steel for a sustained full order book.

U.S. Rail Traffic¹
 Week 7, 2024 – Ended February 17, 2024

	This Week		Year-To-Date		
	Cars	vs 2023	Cumulative	Avg/wk ²	vs 2023
Total Carloads	220,529	-0.6%	1,466,059	209,437	-5.6%
Chemicals	33,899	4.8%	219,146	31,307	3.6%
Coal	59,534	-10.7%	409,408	58,487	-11.8%
Farm Products excl. Grain, and Food	17,377	3.4%	113,609	16,230	-1.8%
Forest Products	8,360	5.1%	56,567	8,081	0.0%
Grain	20,876	1.4%	140,617	20,088	-8.1%
Metallic Ores and Metals	19,425	2.7%	135,252	19,322	-0.1%
Motor Vehicles and Parts	14,849	8.7%	91,765	13,109	-1.6%
Nonmetallic Minerals	27,126	-2.3%	171,405	24,486	-13.6%
Petroleum and Petroleum Products	9,467	-1.3%	69,389	9,913	3.5%
Other	9,616	26.0%	58,901	8,414	2.3%
Total Intermodal Units	253,697	7.9%	1,724,189	246,313	6.7%
Total Traffic	474,226	3.7%	3,190,248	455,750	0.7%

¹ Excludes U.S. operations of CPKC, CN and GMXT.

² Average per week figures may not sum to totals as a result of independent rounding.

Source: AAR website - <https://www.aar.org/Pages/NEWS-and-EVENTS.aspx>

Copper, Gold and Silver Prices

Copper Prices:

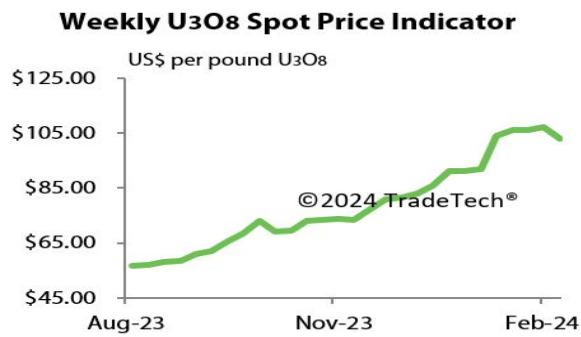


Gold and Silver Prices:



Source: Dailymetalprice.com - <https://www.dailymetalprice.com/metalprices.php>

Trade Tech’s and UX’s Uranium Price Indicators



Sources: Trade Tech, Uranium Info Website – www.uranium.info ; Source: Ux Consulting Co., LLC – <http://www.uxc.com>

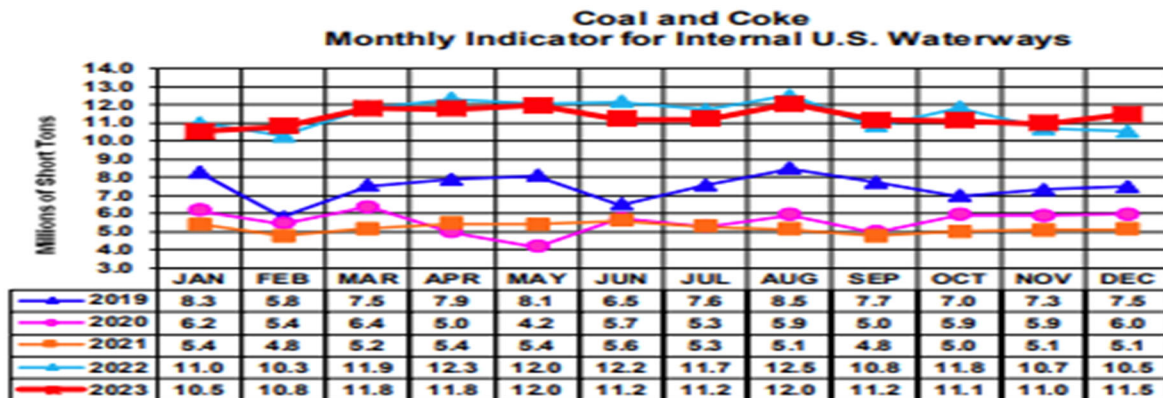
Coal stocks and average number of days of burn for non-lignite coal by region (electric power sector)

Zone	Coal	November 2023		November 2022			October 2023		
		Stocks (1000 tons)	Days of Burn	Stocks (1000 tons)	Days of Burn	% Change of Stocks	Stocks (1000 tons)	Days of Burn	% Change of Stocks
Northeast	Bituminous	2,442	251	2,579	365	-5.3%	2,211	254	10.5%
	Subbituminous								
South	Bituminous	22,642	165	16,264	122	39.2%	19,586	143	15.6%
	Subbituminous	6,605	113	3,708	65	78.1%	6,131	106	7.7%
Midwest	Bituminous	13,260	148	8,395	84	58.0%	13,003	141	2.0%
	Subbituminous	33,303	179	23,752	140	40.2%	30,663	160	8.6%
West	Bituminous	2,755	190	2,385	157	15.5%	2,634	169	4.6%
	Subbituminous	31,390	183	19,245	106	63.1%	31,412	183	-0.1%
U.S. Total	Bituminous	41,099	164	29,624	115	38.7%	37,433	147	9.8%
	Subbituminous	71,298	173	46,705	110	52.7%	68,205	161	4.5%

Source: U.S. Energy Information Administration

NOTE: Stockpile levels shown above reflect a sample of electric power sector plants, which were used to create the days of burn statistics. These levels will not equal total electric power sector stockpile levels.

Source: Energy Information Administration, Electric Monthly Update



For the Internal U.S. Waterway Monthly Indicators, estimates for the most recent month are based on lock performance management data. The estimates will be superseded by actual data as it becomes available.

Source: Waterborne Commerce Statistics Center

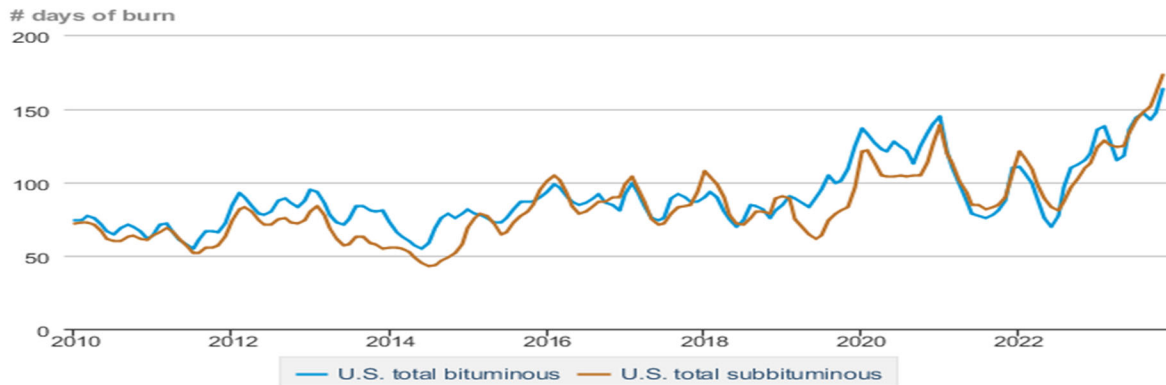
Average weekly coal commodity spot prices
dollars per short ton

	Week ending					Week ago change
	01/19/24	01/26/24	02/02/24	02/09/24	02/16/24	
Central Appalachia 12,500 Btu, 1.2 SO ₂	\$72.00	\$71.00	\$71.00	\$73.25	\$73.25	\$0.00
Northern Appalachia 13,000 Btu, < 3.0 SO ₂	\$48.00	\$47.50	\$47.50	\$48.95	\$48.95	\$0.00
Illinois Basin 11,800 Btu, 5.0 SO ₂	\$44.00	\$43.00	\$43.00	\$43.00	\$43.00	\$0.00
Powder River Basin 8,600 Btu, 0.8 SO ₂	\$14.00	\$14.00	\$14.00	\$13.95	\$13.95	\$0.00
Uinta Basin 11,700 Btu, 0.8 SO ₂	\$27.25	\$27.00	\$27.00	\$26.90	\$26.90	\$0.00

Data source: With permission, S&P Global

Source: Energy Information Administration (with permission from S&P Global), *Coal Market Report*

Days of burn by non-lignite coal rank, January 2010 - November 2023



 Data source: U.S. Energy Information Administration

Source: Energy Information Administration, *Electricity Monthly Update Report*

Temperature – heating & cooling degree days (week ending Feb 08)

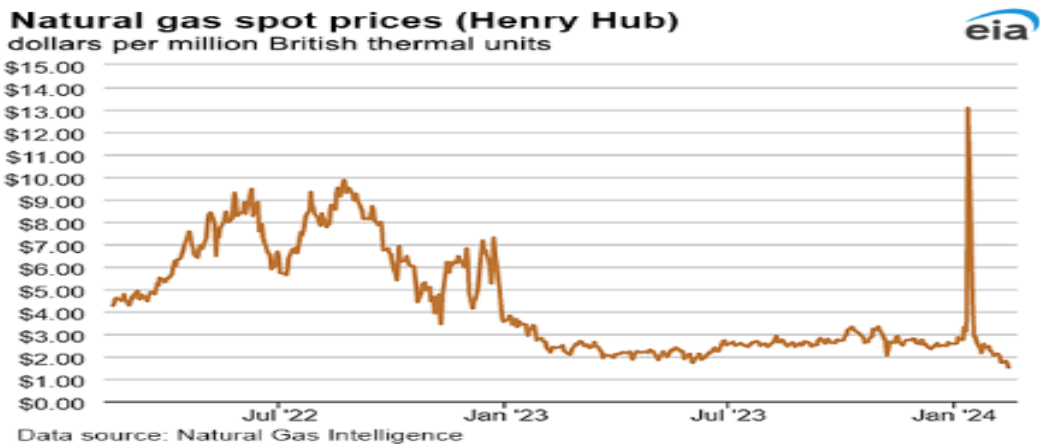
Region	HDDs			CDDs		
	Current total	Deviation from normal	Deviation from last year	Current total	Deviation from normal	Deviation from last year
New England	228	-43	-54	0	0	0
Middle Atlantic	218	-41	-39	0	0	0
E N Central	198	-86	-64	0	0	0
W N Central	170	-123	-101	0	0	0
South Atlantic	148	-25	-7	2	-5	-6
E S Central	121	-53	-30	0	0	0
W S Central	71	-51	-41	1	-3	0
Mountain	196	-20	-20	0	-1	0
Pacific	138	28	22	0	0	0
United States	168	-45	-35	0	-1	-1

Data source: National Oceanic and Atmospheric Administration
Note: HDDs=heating degree days; CDDs=cooling degree days

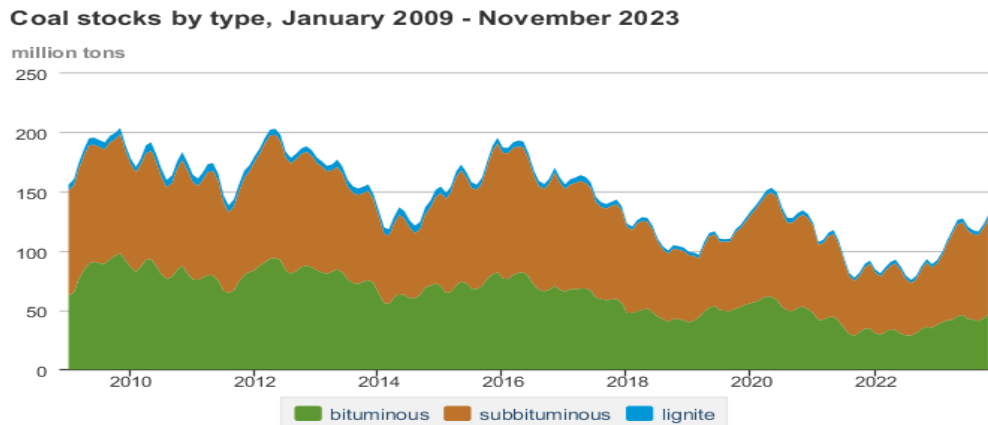
Source: Energy Information Administration, *Natural Gas Weekly Update*.

U.S. Production of Selected Mineral Commodities	2023 Year to Date - 3rd Quarter	2022 Year to Date - 3rd Quarter	Percent Change
Aluminum, secondary (000 Mt.)	686.0	649.0	6%
Cement (Mil. Mt.)	66.9	68.9	-3%
Copper (000 Mt.)	835.0	931.0	-10%
Gold (Mt.)	125.0	126.0	-1%
Gypsum (Mil. Mt.)	14.0	13.8	1%
Iron Ore (Mil. Mt.)	32.0	29.6	8%
Lead (000 Mt.)	201.0	203.0	-1%
Molybdenum (000 Mt.)	25.0	24.4	2%
Palladium (Mt.)	7.4	7.6	-3%
Phosphate rock (Mil. Mt.)	15.0	15.4	-3%
Platinum (Mt.)	2.2	2.3	-4%
Sand & gravel, construction (Mil. Mt.)	698.0	735.0	-5%
Silver (Mt.)	778.0	753.0	3%
Soda ash (Mil. Mt.)	8.1	8.3	-2%
Stone, crushed (Mil. Mt.)	1,170.0	1,180.0	-1%
Zinc (000 Mt.)	543.0	581.0	-7%

Source: U.S. Geological Survey, Mineral Industry Surveys. Percent change based on USGS rounded numbers. 2023 data are preliminary estimates. W - withheld, N/A - not available



Source: Energy Information Administration, *Natural Gas Weekly*.



Source: U.S. Energy Information Administration

Source: Energy Information Administration, *Electricity Monthly Update*

Mining-Related Commodity Prices

Commodity Price - Snapshot		
Metals Prices	Date	Price
Cobalt Spot Price (\$/lb)	2/19/24	\$12.95
Copper Spot Price (\$/lb)	2/20/24	\$3.86
Gold Spot Price (\$/ounce)	2/20/24	\$2,027.12
Lead Spot Price (\$/lb)	2/19/24	\$0.92
Lithium Spot Price (\$/kg)	2/20/24	\$13.55
Molybdenum Spot Price (\$/kg)	2/19/24	\$46.75
Nickel Spot Price (\$/lb)	2/19/24	\$7.30
Silver Spot Price (\$/ounce)	2/20/24	\$23.05
Steel HRC Price (\$/mt)	2/20/24	\$802.27
Steel Rebar Price (\$/mt)	2/20/24	\$523.53
Zinc Spot Price (\$/lb)	2/20/24	\$1.08
Energy Prices	Date	Price
Coal Price - Australian Premium Coking Coal Futures (\$/mt)	2/20/24	\$307.00
Coal Spot Price - Central Appalachian (\$/st)	2/16/24	\$73.25
Coal Spot Price - Newcastle futures (\$/mt)	2/20/24	\$119.09
Coal Spot Price - Rotterdam futures (\$/mt)	2/19/24	\$94.40
Natural Gas Spot Price - Henry Hub (\$/mmbtu)	2/14/23	\$1.51
Uranium Spot Price (\$/lb)	2/12/24	\$103.20

Sources: publicly available data from eia.gov, dailymetalprice.com, tradingeconomics.com, sgxgroup.com, investing.com

EIA Working Natural Gas Underground Storage

Working gas in underground storage

Region	Stocks billion cubic feet (Bcf)		
	2024-02-09	2024-02-02	change
East	536	568	-32
Midwest	662	689	-27
Mountain	178	183	-5
Pacific	222	228	-6
South Central	936	916	20
Total	2,535	2,584	-49

Data source: U.S. Energy Information Administration Form EIA-912, *Weekly Underground Natural Gas Storage Report*
 Note: Totals may not equal sum of components because of independent rounding.

Source: Energy Information Administration, *Natural Gas Weekly Update*

EIA Oil and Natural Gas Rig Productivity

Region	NEW-WELL PRODUCTION PER RIG BY REGION			PRODUCTION BY REGION			DUC WELLS BY REGION		
	New-well oil production per rig barrels/day			New-well gas production per rig thousand cubic feet/day					
	February 2024	March 2024	change	February 2024	March 2024	change			
Anadarko	713	714	1	4,739	4,772	33			
Appalachia	235	236	1	27,695	27,950	255			
Bakken	1,717	1,726	9	2,611	2,624	13			
Eagle Ford	1,645	1,650	5	6,057	6,063	6			
Haynesville	15	15	-	13,544	13,571	27			
Niobrara	1,486	1,488	2	4,479	4,523	44			
Permian	1,345	1,358	13	2,503	2,514	11			
Rig-weighted average	1,158	1,172	14	5,939	5,954	15			

Source: Energy Information Administration, *Drilling Productivity Report*

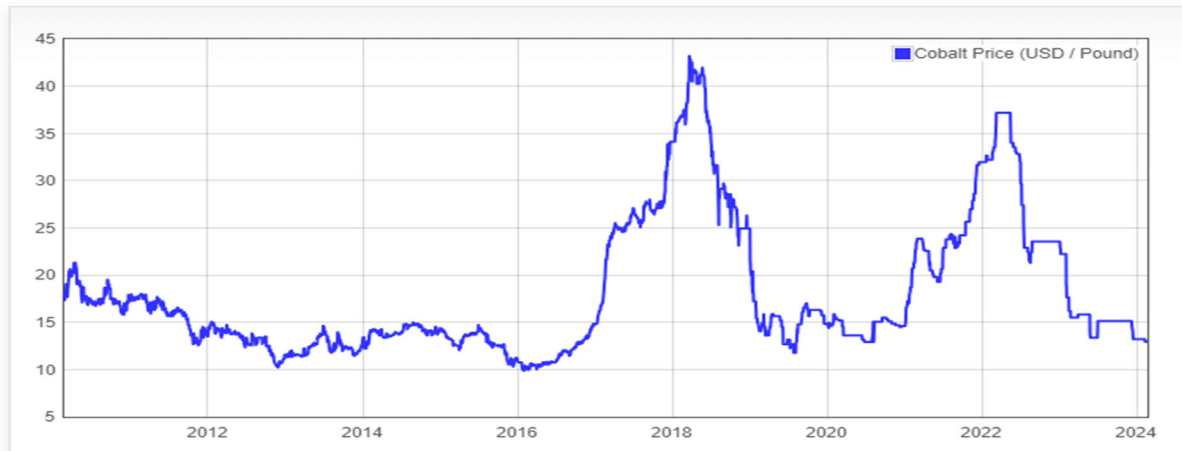
USGS Cobalt – U.S. Trade, Reported Stocks and Listed Prices

Cobalt - November 2023	Nov-23	Year to Date
U.S. Imports for Consumption - Metals (mt)	842	6,920
U.S. Exports of Cobalt Materials - Cobalt Content (mt)	350	4,750
Reported LME Stocks of Cobalt Metal (mt)	92	-
Listed Prices by Type (\$/lb): US Spot & LME Cash Avg.	18.84	14.86

Source: USGS, Mineral Industry Survey, Cobalt in November 2023, January 2024

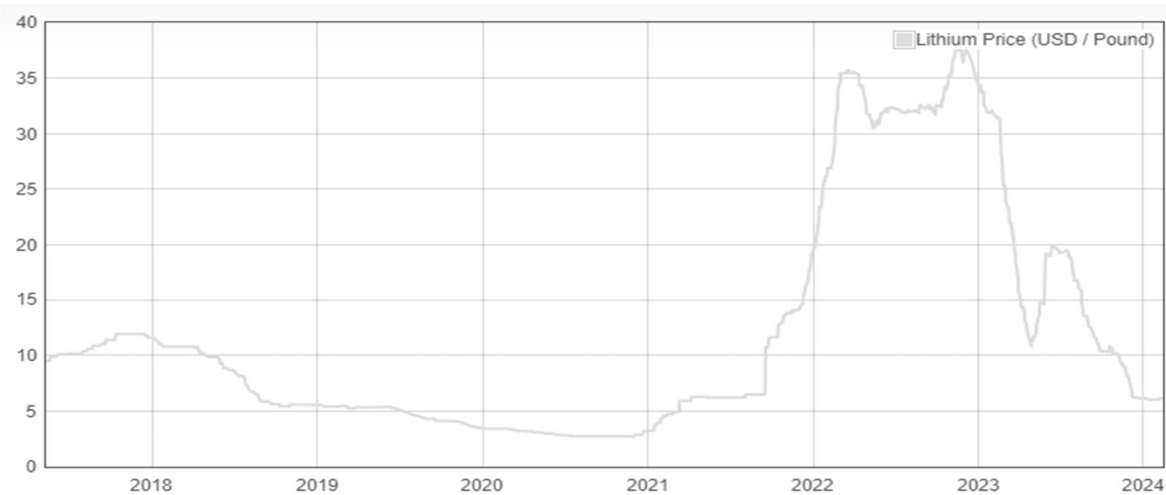
Cobalt and Lithium Prices

Cobalt Prices (US\$/pound):



Source: Dailymetalprice.com - <https://www.dailymetalprice.com/metalpricecharts.php?c=co&u=lb&d=0>

Lithium Prices (US\$/pound):



Source: Dailymetalprice.com - <https://www.dailymetalprice.com/metalpricecharts.php>