



NATIONAL MINING ASSOCIATION

WEEKLY STATISTICAL SUMMARY

January 17, 2025 Edition
(Data for Week Ending January 11, 2025)

Prepared by
National Mining Association

101 Constitution Avenue NW, Suite 500 East
Washington, DC 20001
(202) 463-2600
www.nma.org



NMA WEEKLY STATISTICAL SUMMARY

Vol. 62, No. 2 | Dated 01/17/25

COAL PRODUCTION, CONSUMPTION & TRADE

	Week Ended			* Cumulative Jan 1 to		
	1/11/25	1/13/24	% Chg	1/11/25	1/11/24	% Chg
EIA Coal Production (000 Tons):						
Week Ended/Year to Date	9,331	10,225	-8.7%	15,028	16,579	-9.4%
52 Weeks Ended	507,319	574,309	-11.7%			
AAR Coal Rail Cars Loaded:	52,232	58,478	-10.7%	84,344	96,246	-12.4%
EIA Coal Production	Dec 24/23		% Chg	Jan - Dec 24/23		% Chg
Month Ended - December	43,183	45,711	-5.5%	511,733	577,954	-11.5%

U.S. Department of Commerce Coal Trade (000 Tons)

	November 24/23		% Chg	Jan - Nov 24/23		% Chg
Coal Exports:						
Metallurgical	5,453	4,208	29.6%	51,270	47,089	8.9%
Steam Bit. *	3,914	3,982	-1.7%	46,331	43,504	6.5%
Lignite	3	7	-57.1%	140	87	60.9%
Anthracite	<u>53</u>	<u>61</u>	-13.1%	<u>678</u>	<u>690</u>	-1.7%
Total	9,423	8,258	14.1%	98,419	91,370	7.7%
Coal Imports:	167	335	-50.1%	1,871	3,777	-50.5%

	Week Ended			Cumulative Week 1 to		
	1/11/25	1/13/24	% Chg	1/11/25	1/13/24	% Chg
EEI Electric Total Output (Mil. Kwh)	91,182	82,435	10.6%	168,700	162,127	4.1%
EEI Coal Region Output (Mil. Kwh)	80,165	70,877	13.1%	147,139	140,025	5.1%
AISI Raw Steel Output (000 Tons)	1,659	1,629	1.8%	2,593	2,560	1.3%

EIA AVERAGE COAL & NATURAL GAS SPOT PRICES

Dollars Per Short Ton

Average Coal Spot Prices (\$/Short Ton)	Week Ending			Natural Gas Spot Prices (\$/MMBtu)	
	01/10/24	01/03/24	% Chg	Wed.	01/08/25
Central App, 12,500 Btu, 1.2 SO ₂	\$77.30	\$75.00	3.1%	Henry Hub	3.76
Northern App, 13,000 Btu, < 3.0 SO ₂	50.50	49.00	3.1%	New York	11.50
Illinois Basin, 11,800, 5.0 SO ₂	44.00	44.00	0.0%	Chicago	3.55
Powder River Basin, 8,800 Btu 0.8 SO ₂	14.15	14.20	-0.4%	Cal.Comp.Avg.	3.40

Coal exports and Imports are "as reported" (not revised); *Steam bit. excludes lignite & anthracite. All data in this report are preliminary and subject to revision. r/ revised.

Sources: EIA; Edison Electric Institute; American Iron & Steel Institute; Association of American Railroads; Dept. of Commerce; S&P Global



EIA Estimated Weekly U.S. Coal Production Overview

Coal-Producing Region & State (thousand short tons)	Week Ended			Year to Date			52 Weeks Ended		
	1/11/2025 (week 2)	1/4/2025 (week 1)	1/13/2024 (week 2)	1/11/2025	1/11/2024	% Change	1/11/2025	1/13/2024	% Change
Alabama	334	309	283	525	458	14.6	14,436	12,151	18.8
Alaska	21	20	24	32	39	-16.5	957	1,010	-5.2
Colorado	283	290	270	454	438	3.6	13,138	12,452	5.5
Illinois	713	719	766	1,149	1,243	-7.5	35,895	36,963	-2.9
Indiana	373	382	432	598	700	-14.6	19,928	23,562	-15.4
Kentucky total	461	476	519	744	842	-11.6	24,404	28,012	-12.9
Eastern (KY)	188	196	212	305	344	-11.6	10,274	12,183	-15.7
Western (KY)	273	280	307	440	497	-11.6	14,130	15,829	-10.7
Louisiana	5	5	6	7	9	-18.5	256	287	-10.8
Maryland	26	27	27	42	44	-5.5	1,284	1,277	0.5
Mississippi	30	37	21	53	35	53.1	2,123	2,634	-19.4
Missouri	3	3	3	5	5	7.7	154	140	10.0
Montana	489	510	507	788	823	-4.3	26,893	28,964	-7.2
New Mexico	130	120	141	204	228	-10.4	7,084	7,926	-10.6
North Dakota	516	509	525	828	851	-2.6	25,108	24,041	4.4
Ohio	33	34	38	54	61	-11.9	1,714	1,926	-11.0
Oklahoma	s	s	s	s	s	92.9	1	2	-50.0
Pennsylvania total	774	799	787	1,245	1,277	-2.5	40,582	42,555	-4.6
Anthracite (PA)	66	63	61	104	99	4.9	3,105	2,933	5.9
Bituminous (PA)	708	736	726	1,141	1,177	-3.1	37,476	39,623	-5.4
Texas	197	207	217	316	352	-10.2	11,602	13,657	-15.0
Utah	131	124	149	198	241	-17.9	6,802	6,887	-1.2
Virginia	171	180	183	280	297	-5.8	9,408	10,499	-10.4
West Virginia total	1,526	1,531	1,584	2,456	2,568	-4.3	78,772	84,222	-6.5
Northern (WV)	730	767	782	1,194	1,268	-5.8	39,615	44,259	-10.5
Southern (WV)	796	765	802	1,263	1,300	-2.9	39,158	39,964	-2.0
Wyoming	3,115	3,464	3,744	5,048	6,070	-16.8	186,779	235,140	-20.6
Appalachian total	3,052	3,076	3,114	4,907	5,050	-2.8	156,470	164,813	-5.1
Interior total	1,594	1,634	1,752	2,568	2,840	-9.6	84,089	93,075	-9.7
Western total	4,685	5,038	5,359	7,553	8,689	-13.1	266,760	316,421	-15.7
East of Mississippi River	4,441	4,494	4,641	7,147	7,524	-5.0	228,546	243,802	-6.3
West of Mississippi River	4,890	5,253	5,584	7,881	9,055	-13.0	278,773	330,507	-15.7
Bituminous and lignite	9,265	9,684	10,164	14,924	16,480	-9.4	504,213	571,376	-11.8
Anthracite	66	63	61	104	99	4.9	3,105	2,933	5.9
U.S. total	9,331	9,747	10,225	15,028	16,579	-9.4	507,319	574,309	-11.7
Railroad cars loaded	52,232	56,471	58,478	84,344	96,246	-12.4	2,930,063	3,403,949	-13.9

Source: Energy Information Administration



Weekly Electric Output

Volume 93 No. 2

OUTPUT FOR WEEK ENDED - Jan 11, 2025

The net available amount of electric energy distributed by the Total Electric Utility Industry+ for the week ended Saturday, **Jan 11, 2025** was **91,182** gigawatthours (GWh), according to the Edison Electric Institute.

WEEKLY ELECTRIC OUTPUT BY GEOGRAPHIC DIVISION

(48 CONTIGUOUS STATES)

	Week Ended January 11		52 Weeks Ended January 11	
	GWh Output	% Increase Over Corresponding Week of 2024	GWh Output	% Increase Over Corresponding Week of 2024
New England	2,629	12.25 %	113,151	1.79 %
Mid-Atlantic	9,385	17.61 %	415,042	2.92 %
Central Industrial	14,443	8.78 %	653,802	2.64 %
West Central	6,768	0.43 %	333,551	-1.17 %
Southeast	24,242	19.54 %	1,038,936	2.95 %
South Central	19,382	19.42 %	897,140	3.31 %
Rocky Mountain	5,944	-6.73 %	304,107	3.32 %
Pacific Northwest	3,566	-14.37 %	159,170	-0.17 %
Pacific Southwest	4,822	-4.54 %	273,345	2.19 %
Total United States	91,182	10.61 %	4,188,244	2.46 %

WEEKLY ELECTRIC OUTPUT IN PREVIOUS WEEKS--GWh

Week Ended	2025	Week Ended	2024	% Inc. (25/24)	52 Weeks Ended	2025	% Inc. (25/24)
Dec 21	79,947	Dec 23	78,483	1.87 %	Dec 21	4,177,082	2.32 %
Dec 28	77,960	Dec 30	73,371	6.25 %	Dec 28	4,181,671	2.59 %
Jan 04	77,518	Jan 06	79,691	-2.73 %	Jan 04	4,179,498	2.37 %
Jan 11	91,182	Jan 13	82,435	10.61 %	Jan 11	4,188,244	2.46 %
Jan 11	168,700	Jan 13	162,127	4.05 %	YEAR TO DATE, FIRST 2 WEEKS		

EEI WEEKLY ELECTRIC OUTPUT BY GEOGRAPHIC DIVISION (48 CONTIGUOUS STATES)

	Week Ended			NMA CUMULATIVE JANUARY WEEK ONE TO			52 Weeks Ended		
	11-Jan 2025 GWh Output	13-Jan 2024 GWh Output	% Increase Over Corresponding Week	11-Jan 2025 GWh Output	13-Jan 2024 GWh Output	% Increase Over Corresponding Week	11-Jan 2025 GWh Output	13-Jan 2024 GWh Output	% Increase Over Corresponding Week
New England	2,629	2,342	12.3%	4,858	4,660	4.2%	113,151	111,148	1.8%
Mid-Atlantic	9,385	7,980	17.6%	17,202	16,093	6.9%	415,042	403,276	2.9%
Central Industrial	14,443	13,278	8.8%	27,029	26,189	3.2%	653,802	636,964	2.6%
West Central	6,768	6,738	0.4%	13,090	13,170	-0.6%	333,551	337,495	-1.2%
Southeast	24,242	20,279	19.5%	44,023	40,984	7.4%	1,038,936	1,009,139	3.0%
South Central	19,382	16,229	19.4%	34,474	31,869	8.2%	897,140	868,408	3.3%
Rocky Mountain	5,944	6,373	-6.7%	11,320	11,719	-3.4%	304,107	294,344	3.3%
Pacific Northwest	3,566	4,165	-14.4%	7,062	7,598	-7.1%	159,170	159,448	-0.2%
Pacific Southwest	4,822	5,051	-4.5%	9,641	9,844	-2.1%	273,345	267,498	2.2%
Total United States ^{1/}	91,182	82,435	10.6%	168,700	162,127	4.1%	4,188,244	4,087,720	2.5%
Coal Regions Only ^{2/}	80,165	70,877	13.1%	147,139	140,025	5.1%	3,642,578	3,549,626	2.6%

Notes: EEI output data are an estimate of electricity load made available for distribution derived as weekly net generation + purchases from non-utilities + net imports - exports - sales for resale. It is not meant to be a measure of electricity generation for the U.S. EEI survey data represent the majority of national distribution (large utilities, large government power projects, some independent and large municipal power projects). The remaining segment of the industry (smaller producers) is estimated. Non-utility generation is captured via direct sales to utilities.

^{1/} Excludes Alaska and Hawaii

^{2/} Excludes New England and Pacific regions

SOURCE: Edison Electric Institute (EEI), *Weekly Electric Output Report*.

AMERICAN IRON AND STEEL INSTITUTE
 25 Massachusetts Avenue, NW, Suite 800
 Washington, D.C. 20001

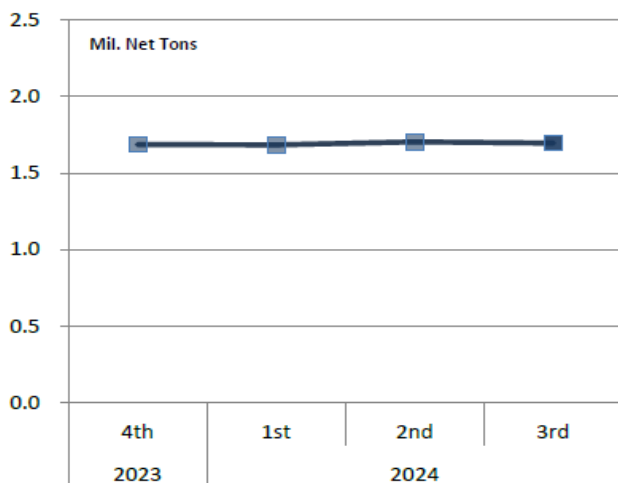
January 13, 2024

ESTIMATED WEEKLY RAW STEEL * PRODUCTION

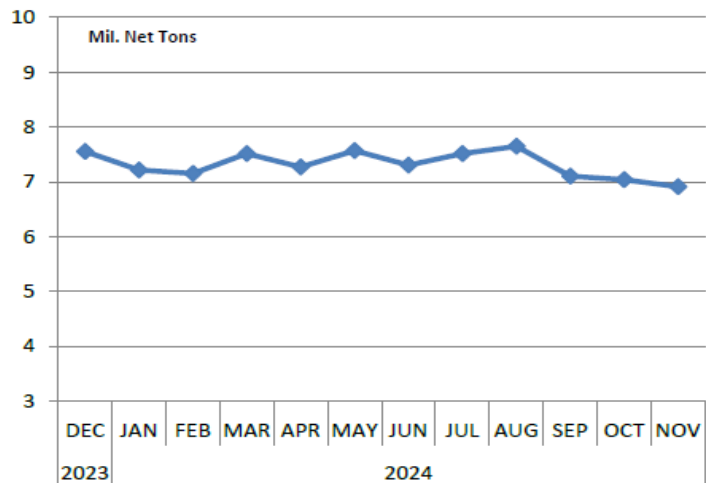
<u>Period</u>	<u>Thousand Net Tons</u>	<u>Percent Change from Previous Period</u>	<u>Percent Capability Utilization**</u>	<u>Production by District</u>		
				<u>Week Ending</u>		
				<u>Jan 11</u>	<u>Jan 4</u>	
<u>Week Ending</u>				North East	128	124
				Great Lakes	483	544
Jan 11, 2025	1,659	1.5	74.5	Midwest	240	220
Jan 11, 2024	1,629	1.8	73.3	Southern	750	693
Jan 4, 2025	1,635	-1.4	73.6	Western	58	54
				Total	1,659	1,635
<u>Year-to-Date +</u>						
Jan 11, 2025	2,593	1.3	74.1			
Jan 11, 2024	2,560	-	73.3			

*Raw steel production tonnage included in this report is estimated based on a sampling of steel producers (50% of domestic producers). Therefore, this report should be used primarily to assess production trends. The AISI production report "AIS 7," produced monthly and available by subscription, provides a more accurate summary of steel production based on data supplied by companies representing approximately 75% of U.S. production capacity plus includes revisions for previous months.

Average Weekly Raw Steel Production



Monthly Raw Steel Production



*Steel in the first solid state after melting suitable for further processing or sale, including ingots, steel for castings and strand or pressure cast blooms, slabs or other product forms. ** Based on tonnage capability to produce raw steel for a sustained full order book.

U.S. Rail Traffic¹
 Week 2, 2025 – Ended January 11, 2025

	This Week		Year-To-Date		
	Cars	vs 2024	Cumulative	Avg/wk ²	vs 2024
Total Carloads	199,511	-6.4%	398,011	199,006	-5.5%
Chemicals	31,330	-5.3%	63,077	31,539	1.5%
Coal	52,232	-10.7%	108,703	54,352	-9.4%
Farm Products excl. Grain, and Food	17,442	8.9%	33,905	16,953	4.7%
Forest Products	8,588	4.9%	16,594	8,297	3.5%
Grain	21,124	12.7%	42,072	21,036	4.1%
Metallic Ores and Metals	17,865	-13.5%	35,496	17,748	-12.9%
Motor Vehicles and Parts	9,788	-28.4%	16,236	8,118	-29.7%
Nonmetallic Minerals	22,229	-12.6%	45,182	22,591	-9.2%
Petroleum and Petroleum Products	10,746	3.5%	21,598	10,799	6.3%
Other	8,167	-3.5%	15,148	7,574	-6.4%
Total Intermodal Units	265,879	8.9%	488,789	244,395	7.8%
Total Traffic	465,390	1.8%	886,800	443,400	1.4%

¹ Excludes U.S. operations of CPKC, CN and GMXT.

² Average per week figures may not sum to totals as a result of independent rounding.

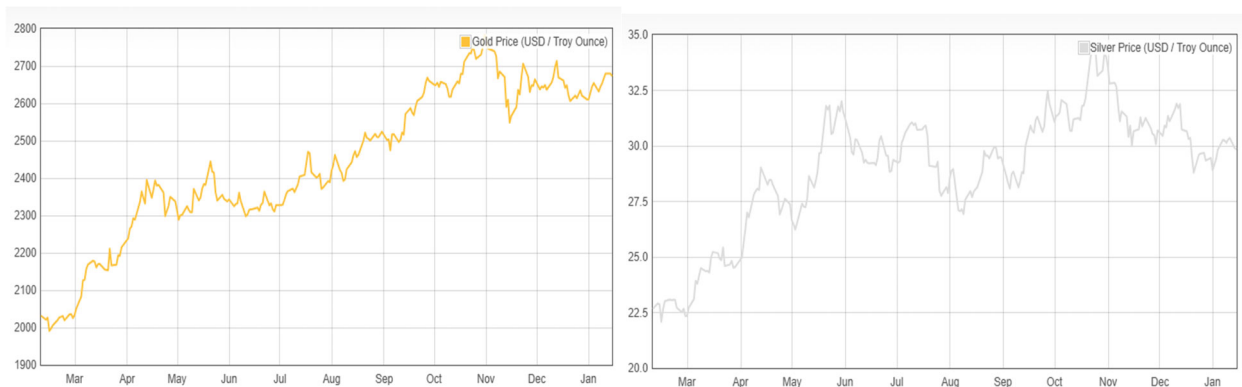
Source: AAR website - <https://www.aar.org/Pages/NEWS-and-EVENTS.aspx>

Copper, Gold and Silver Prices

Copper Prices:

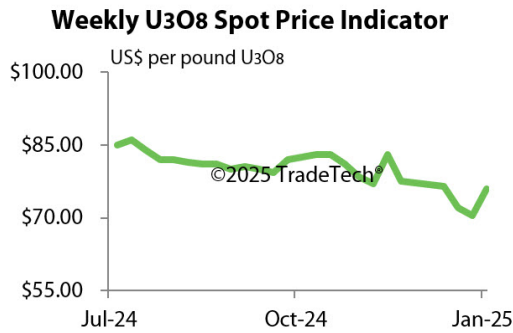


Gold and Silver Prices:



Source: Dailymetalprice.com - <https://www.dailymetalprice.com/metalprices.php>

Trade Tech’s and UX’s Uranium Price Indicators



Sources: Trade Tech, Uranium Info Website – www.uranium.info ; Source: Ux Consulting Co., LLC – <http://www.uxc.com>

Coal stocks and average number of days of burn for non-lignite coal by region (electric power sector)

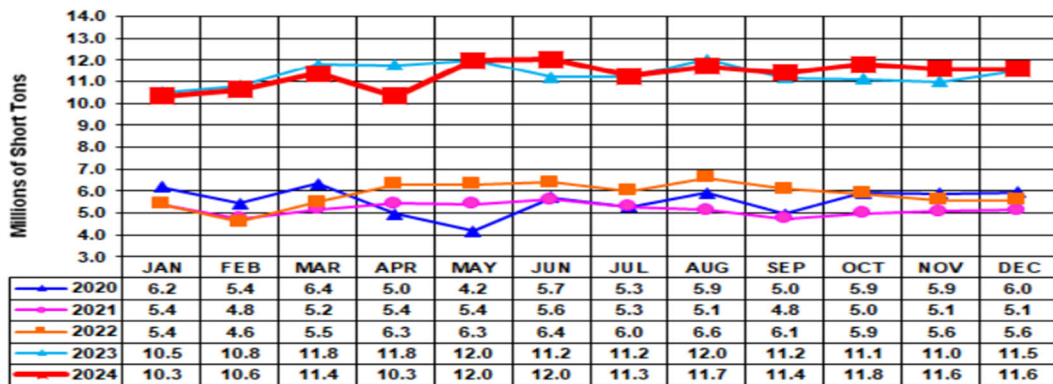
Zone	Coal	October 2024		October 2023		% Change of Stocks	September 2024		% Change of Stocks
		Stocks (1000 tons)	Days of Burn	Stocks (1000 tons)	Days of Burn		Stocks (1000 tons)	Days of Burn	
Northeast	Bituminous	2,150	174	2,211	254	-2.8%	2,056	217	4.6%
	Subbituminous	-	-	-	-	-	-	-	-
South	Bituminous	20,339	143	21,236	159	-4.2%	19,429	147	4.7%
	Subbituminous	5,962	96	6,131	106	-2.7%	6,008	106	-0.8%
Midwest	Bituminous	11,869	131	13,003	141	-8.7%	11,299	133	5.0%
	Subbituminous	33,706	146	30,663	160	9.9%	31,779	145	6.1%
West	Bituminous	3,292	228	2,634	169	25.0%	3,372	219	-2.4%
	Subbituminous	30,183	158	30,096	174	0.3%	29,152	153	3.5%
U.S. Total	Bituminous	37,649	144	39,083	155	-3.7%	36,156	148	4.1%
	Subbituminous	69,852	143	66,889	157	4.4%	66,938	143	4.4%

Source: U.S. Energy Information Administration

NOTE: Stockpile levels shown above reflect a sample of electric power sector plants, which were used to create the days of burn statistics. These levels will not equal total electric power sector stockpile levels.

Source: Energy Information Administration, Electric Monthly Update

Coal and Coke Monthly Indicator for Internal U.S. Waterways



For the Internal U.S. Waterway Monthly Indicators, estimates for the most recent month are based on lock performance management data. The estimates will be superseded by actual data as it becomes available.

Source: Waterborne Commerce Statistics Center

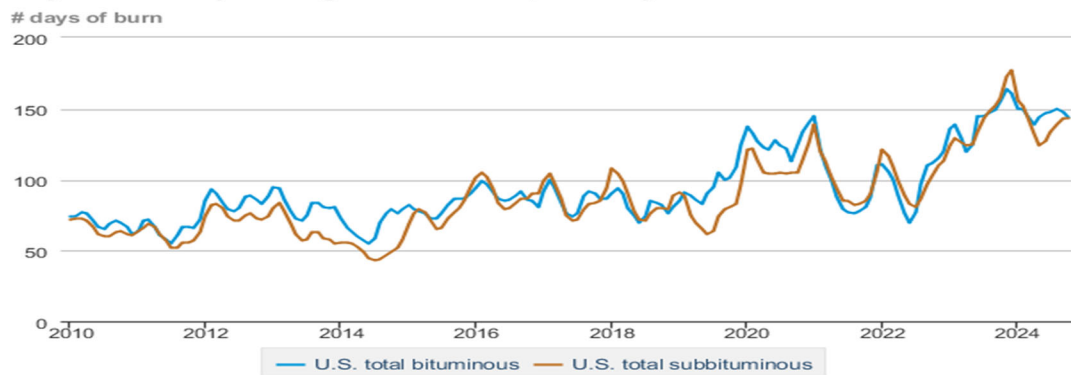
Average weekly coal commodity spot prices dollars per short ton

	Week ending					Week ago change
	12/13/24	12/20/24	12/27/24	01/03/25	01/10/25	
Central Appalachia 12,500 Btu, 1.2 SO ₂	\$75.25	\$75.25	\$75.25	\$75.00	\$77.30	\$2.30
Northern Appalachia 13,000 Btu, < 3.0 SO ₂	\$50.00	\$49.00	\$49.00	\$49.00	\$50.50	\$1.50
Illinois Basin 11,800 Btu, 5.0 SO ₂	\$44.00	\$44.00	\$44.00	\$44.00	\$44.00	\$0.00
Powder River Basin 8,800 Btu, 0.8 SO ₂	\$14.20	\$14.20	\$14.20	\$14.20	\$14.15	-\$0.05

Data source: With permission, [S&P Global](#)

Source: Energy Information Administration (with permission from S&P Global), *Coal Market Report*

Days of burn by non-lignite coal rank, January 2010 - October 2024



Data source: U.S. Energy Information Administration

Source: Energy Information Administration, *Electricity Monthly Update Report*

Temperature – heating & cooling degree days (week ending Jan 02)

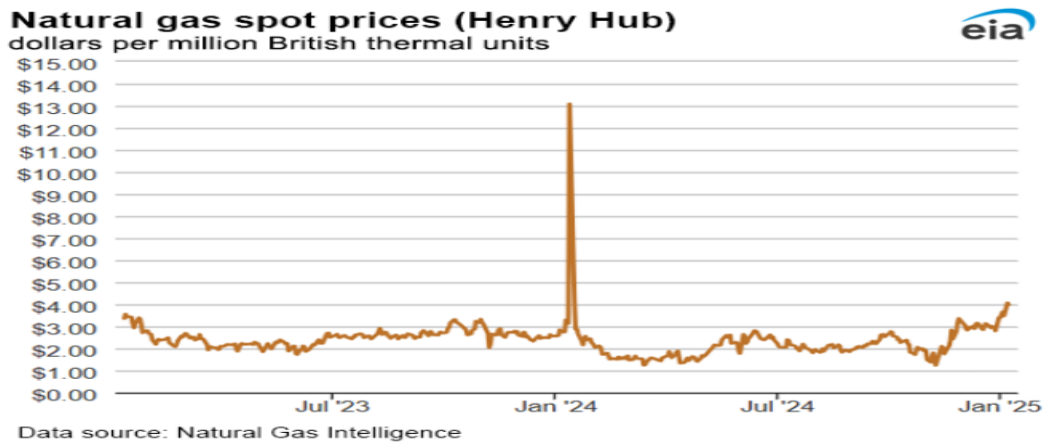
Region	HDDs			CDDs		
	Current total	Deviation from normal	Deviation from last year	Current total	Deviation from normal	Deviation from last year
New England	197	-66	5	0	0	0
Middle Atlantic	198	-52	7	0	0	0
E N Central	188	-97	-27	0	0	0
W N Central	212	-97	-30	0	0	0
South Atlantic	118	-59	-26	8	1	6
E S Central	105	-79	-72	0	-1	0
W S Central	76	-61	-70	3	1	3
Mountain	202	-34	-9	0	0	0
Pacific	105	-21	-3	0	0	0
United States	157	-63	-22	2	1	2

Data source: National Oceanic and Atmospheric Administration
Note: HDDs=heating degree days; CDDs=cooling degree days

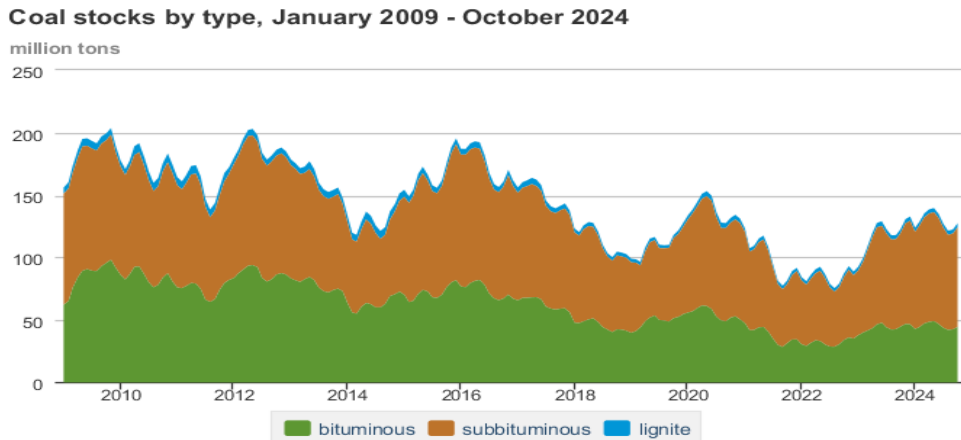
Source: Energy Information Administration, *Natural Gas Weekly Update*.

U.S. Production of Selected Mineral Commodities	2024 Year to Date - 3rd Quarter	2023 Year to Date - 3rd Quarter	Percent Change
Aluminum, secondary (000 Mt.)	670.0	686.0	-2%
Cement (Mil. Mt.)	62.5	66.9	-7%
Copper (000 Mt.)	777.0	835.0	-7%
Gold (Mt.)	118.0	124.0	-5%
Gypsum (Mil. Mt.)	14.2	14.0	1%
Iron Ore (Mil. Mt.)	34.6	32.9	5%
Lead (000 Mt.)	217.0	200.0	9%
Molybdenum (000 Mt.)	25.1	25.0	0%
Palladium (Mt.)	8.4	7.5	12%
Phosphate rock (Mil. Mt.)	14.9	14.9	0%
Platinum (Mt.)	2.5	2.2	14%
Sand & gravel, construction (Mil. Mt.)	684.0	731.0	-6%
Silver (Mt.)	771.0	764.0	1%
Soda ash (Mil. Mt.)	8.7	8.1	7%
Stone, crushed (Mil. Mt.)	1,110.0	1,170.0	-5%
Zinc (000 Mt.)	564.0	544.0	4%

Source: U.S. Geological Survey, Mineral Industry Surveys. Percent change based on USGS rounded numbers. 2024 data are preliminary estimates. W - withheld, N/A - not available



Source: Energy Information Administration, *Natural Gas Weekly*.



Data source: U.S. Energy Information Administration

Source: Energy Information Administration, *Electricity Monthly Update*

Mining-Related Commodity Prices

Commodity Price - Snapshot		
Metals Prices	Date	Price
Cobalt Spot Price (\$/lb)	1/14/25	\$11.02
Copper Spot Price (\$/lb)	1/14/25	\$4.31
Gold Spot Price (\$/ounce)	1/14/25	\$2,666.40
Lead Spot Price (\$/lb)	1/14/25	\$0.89
Lithium Spot Price (\$/kg)	1/14/25	\$10.41
Molybdenum Spot Price (\$/kg)	1/14/25	\$63.97
Nickel Spot Price (\$/lb)	1/14/25	\$7.22
Silver Spot Price (\$/ounce)	1/14/25	\$29.73
Steel HRC Price (\$/mt)	1/14/25	\$698.86
Steel Rebar Price (\$/mt)	1/14/25	\$438.67
Zinc Spot Price (\$/lb)	1/14/25	\$1.30
Energy Prices	Date	Price
Coal Price - Australian Premium Coking Coal Futures (\$/mt)	1/14/25	\$194.00
Coal Spot Price - Central Appalachian (\$/st)	1/10/25	\$77.30
Coal Spot Price - Newcastle futures (\$/mt)	1/14/25	\$115.30
Coal Spot Price - Rotterdam futures (\$/mt)	1/14/25	\$106.95
Natural Gas Spot Price - Henry Hub (\$/mmbtu)	1/8/25	\$3.76
Uranium Spot Price (\$/lb)	1/14/25	\$73.75

Sources: publically available data from eia.gov, dailymetalprice.com, tradingeconomics.com, sgxgroup.com, investing.com

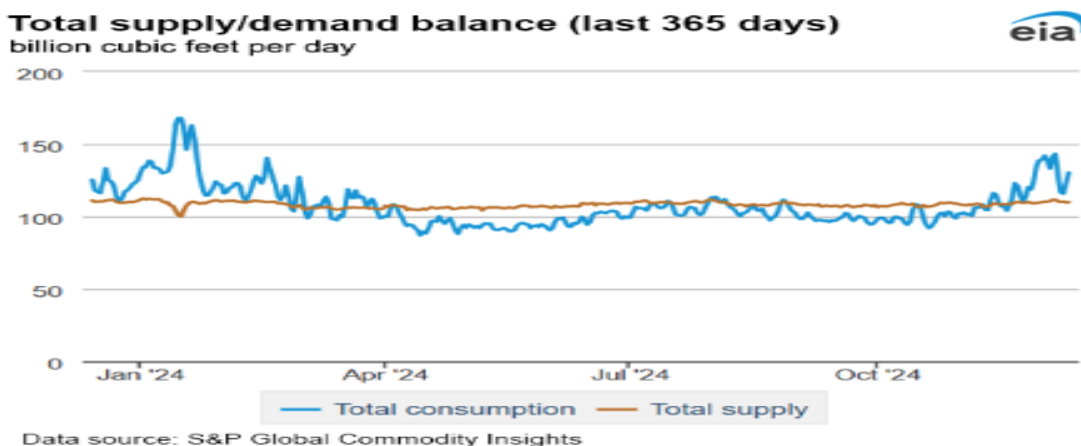
EIA Working Natural Gas Underground Storage

Working gas in underground storage

Region	Stocks billion cubic feet (Bcf)		
	2025-01-03	2024-12-27	change
East	737	745	-8
Midwest	881	914	-33
Mountain	255	262	-7
Pacific	293	295	-2
South Central	1,207	1,197	10
Total	3,373	3,413	-40

Data source: U.S. Energy Information Administration Form EIA-912, *Weekly Underground Natural Gas Storage Report*
 Note: Totals may not equal sum of components because of independent rounding.

Source: Energy Information Administration, *Natural Gas Weekly Update*



Source: Energy Information Administration, *Natural Gas Weekly Update*

USGS Cobalt – U.S. Trade, Reported Stocks and Listed Prices

Cobalt - October 2024	Oct-24	Year to Date
U.S. Imports for Consumption - Metals (mt)	590	7,000
U.S. Exports of Cobalt Materials - Cobalt Content (mt)	370	3,770
Reported LME Stocks of Cobalt Metal (mt)	130	-
Listed Prices by Type (\$/lb): US Spot & LME Cash Avg.	15.90	10.88

Source: USGS, Mineral Industry Survey, Cobalt in October 2024, December 2024

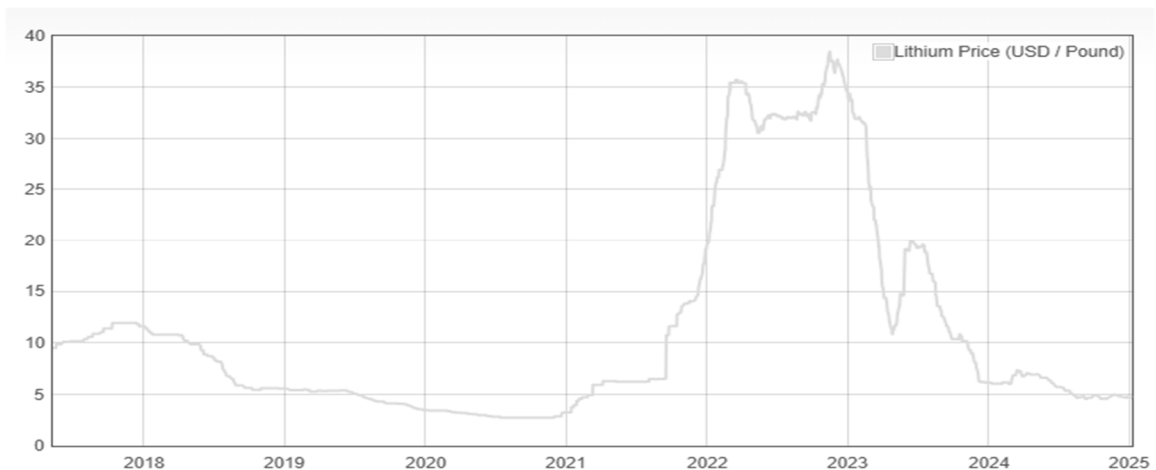
Cobalt and Lithium Prices

Cobalt Prices (US\$/pound):



Source: Dailymetalprice.com - <https://www.dailymetalprice.com/metalpricecharts.php?c=co&u=lb&d=0>

Lithium Prices (US\$/pound):



Source: Dailymetalprice.com - <https://www.dailymetalprice.com/metalpricecharts.php>