



NATIONAL MINING ASSOCIATION

WEEKLY STATISTICAL SUMMARY

January 24, 2025 Edition
(Data for Week Ending January 18, 2025)

Prepared by
National Mining Association

101 Constitution Avenue NW, Suite 500 East
Washington, DC 20001
(202) 463-2600
www.nma.org



NMA WEEKLY STATISTICAL SUMMARY

Vol. 62, No. 3 | Dated 01/24/25

COAL PRODUCTION, CONSUMPTION & TRADE

	Week Ended			* Cumulative Jan 1 to		
	1/18/25	1/20/24	% Chg	1/18/25	1/18/24	% Chg
EIA Coal Production (000 Tons):						
Week Ended/Year to Date	10,528	8,346	26.1%	25,556	25,451	0.4%
52 Weeks Ended	509,501	570,763	-10.7%			
AAR Coal Rail Cars Loaded:	59,223	47,731	24.1%	143,567	146,987	-2.3%
EIA Coal Production Month Ended - December	Dec 24/23 43,183	45,711	% Chg -5.5%	Jan - Dec 24/23 511,733	577,954	% Chg -11.5%

U.S. Department of Commerce Coal Trade (000 Tons)

	November 24/23		% Chg	Jan - Nov 24/23		% Chg
Coal Exports:						
Metallurgical	5,453	4,208	29.6%	51,270	47,089	8.9%
Steam Bit. *	3,914	3,982	-1.7%	46,331	43,504	6.5%
Lignite	3	7	-57.1%	140	87	60.9%
Anthracite	<u>53</u>	<u>61</u>	-13.1%	<u>678</u>	<u>690</u>	-1.7%
Total	9,423	8,258	14.1%	98,419	91,370	7.7%
Coal Imports:	167	335	-50.1%	1,871	3,777	-50.5%

	Week Ended			Cumulative Week 1 to		
	1/18/25	1/20/24	% Chg	1/18/25	1/20/24	% Chg
EI Electric Total Output (Mil. Kwh)	87,343	94,267	-7.3%	256,043	256,394	-0.1%
EI Coal Region Output (Mil. Kwh)	76,100	82,510	-7.8%	223,239	222,534	0.3%
AISI Raw Steel Output (000 Tons)	1,644	1,629	0.9%	4,237	4,189	1.1%

EIA AVERAGE COAL & NATURAL GAS SPOT PRICES

Dollars Per Short Ton

Average Coal Spot Prices (\$/Short Ton)	Week Ending			Natural Gas Spot Prices (\$/MMBtu)	
	01/17/24	01/10/24	% Chg	Wed.	01/15/25
Central App, 12,500 Btu, 1.2 SO ₂	\$77.30	\$77.30	0.0%	Henry Hub	4.43
Northern App, 13,000 Btu, < 3.0 SO ₂	50.50	50.50	0.0%	New York	6.50
Illinois Basin, 11,800, 5.0 SO ₂	44.00	44.00	0.0%	Chicago	4.17
Powder River Basin, 8,800 Btu 0.8 SO ₂	14.15	14.15	0.0%	Cal.Comp.Avg.	4.43

Coal exports and Imports are "as reported" (not revised); *Steam bit. excludes lignite & anthracite. All data in this report are preliminary and subject to revision. r/ revised.

Sources: EIA; Edison Electric Institute; American Iron & Steel Institute; Association of American Railroads; Dept. of Commerce; S&P Global



EIA Estimated Weekly U.S. Coal Production Overview									
Coal-Producing Region & State (thousand short tons)	Week Ended			Year to Date			52 Weeks Ended		
	1/18/2025 (week 3)	1/11/2025 (week 2)	1/20/2024 (week 3)	1/18/2025	1/18/2024	% Change	1/18/2025	1/20/2024	% Change
Alabama	355	334	231	880	703	25.1	14,560	12,161	19.7
Alaska	22	21	19	54	59	-8.2	960	1,007	-4.7
Colorado	317	283	221	772	673	14.7	13,235	12,450	6.3
Illinois	798	713	626	1,947	1,908	2.0	36,067	36,804	-2.0
Indiana	415	373	352	1,013	1,075	-5.7	19,990	23,378	-14.5
Kentucky total	515	461	424	1,260	1,292	-2.5	24,496	27,824	-12.0
Eastern (KY)	212	188	173	516	529	-2.4	10,312	12,099	-14.8
Western (KY)	304	273	250	743	763	-2.6	14,184	15,725	-9.8
Louisiana	5	5	5	12	14	-10.4	257	286	-10.1
Maryland	29	26	22	71	68	3.8	1,291	1,275	1.3
Mississippi	39	30	17	92	53	73.5	2,145	2,604	-17.6
Missouri	3	3	2	9	7	18.3	156	139	12.2
Montana	554	489	414	1,341	1,263	6.2	27,032	28,825	-6.2
New Mexico	137	130	115	342	350	-2.4	7,106	7,872	-9.7
North Dakota	570	516	428	1,399	1,306	7.1	25,251	23,932	5.5
Ohio	37	33	31	91	94	-3.3	1,720	1,909	-9.9
Oklahoma	s	s	s	s	s	117.4	1	2	-50.0
Pennsylvania total	871	774	643	2,116	1,960	8.0	40,810	42,343	-3.6
Anthracite (PA)	71	66	50	175	152	14.9	3,126	2,931	6.7
Bituminous (PA)	800	708	593	1,941	1,808	7.4	37,683	39,413	-4.4
Texas	224	197	177	540	540	-0.1	11,648	13,541	-14.0
Utah	138	131	121	336	370	-9.2	6,819	6,846	-0.4
Virginia	194	171	150	474	457	3.8	9,452	10,404	-9.2
West Virginia total	1,690	1,526	1,293	4,147	3,942	5.2	79,170	83,725	-5.4
Northern (WV)	827	730	638	2,021	1,946	3.9	39,804	43,949	-9.4
Southern (WV)	863	796	654	2,126	1,996	6.5	39,366	39,776	-1.0
Wyoming	3,614	3,115	3,056	8,662	9,318	-7.0	187,337	233,436	-19.7
Appalachian total	3,387	3,052	2,542	8,294	7,752	7.0	157,315	163,915	-4.0
Interior total	1,788	1,594	1,430	4,356	4,360	-0.1	84,447	92,480	-8.7
Western total	5,353	4,685	4,374	12,906	13,339	-3.2	267,739	314,368	-14.8
East of Mississippi River	4,943	4,441	3,788	12,089	11,551	4.7	229,701	242,427	-5.2
West of Mississippi River	5,586	4,890	4,558	13,467	13,900	-3.1	279,800	328,336	-14.8
Bituminous and lignite	10,457	9,265	8,296	25,381	25,299	0.3	506,375	567,833	-10.8
Anthracite	71	66	50	175	152	14.9	3,126	2,931	6.7
U.S. total	10,528	9,331	8,346	25,556	25,451	0.4	509,501	570,763	-10.7
Railroad cars loaded	59,223	52,232	47,731	143,567	146,987	-2.3	2,941,555	3,383,005	-13.0

Source: Energy Information Administration



Weekly Electric Output

Volume 93 No. 3

OUTPUT FOR WEEK ENDED - Jan 18, 2025

The net available amount of electric energy distributed by the Total Electric Utility Industry+ for the week ended Saturday, **Jan 18, 2025** was **87,343** gigawatthours (GWh), according to the Edison Electric Institute.

WEEKLY ELECTRIC OUTPUT BY GEOGRAPHIC DIVISION

(48 CONTIGUOUS STATES)

	Week Ended January 18		52 Weeks Ended January 18	
	GWh Output	% Increase Over Corresponding Week of 2024	GWh Output	% Increase Over Corresponding Week of 2024
New England	2,495	-3.37 %	113,064	1.47 %
Mid-Atlantic	9,019	-3.73 %	414,693	2.49 %
Central Industrial	14,187	-8.39 %	652,502	1.99 %
West Central	6,887	-8.23 %	332,933	-1.68 %
Southeast	22,665	-5.57 %	1,037,600	2.33 %
South Central	17,205	-14.11 %	894,313	2.25 %
Rocky Mountain	6,137	0.33 %	304,128	3.26 %
Pacific Northwest	3,825	-11.14 %	158,691	-0.95 %
Pacific Southwest	4,923	1.08 %	273,398	2.25 %
Total United States	87,343	-7.35 %	4,181,320	1.86 %

WEEKLY ELECTRIC OUTPUT IN PREVIOUS WEEKS--GWh

Week Ended	2025	Week Ended	2024	% Inc. (25/24)	52 Weeks Ended	2025	% Inc. (25/24)
Dec 28	77,960	Dec 30	73,371	6.25 %	Dec 28	4,181,671	2.59 %
Jan 04	77,518	Jan 06	79,691	-2.73 %	Jan 04	4,179,498	2.37 %
Jan 11	91,182	Jan 13	82,435	10.61 %	Jan 11	4,188,244	2.46 %
Jan 18	87,343	Jan 20	94,267	-7.35 %	Jan 18	4,181,320	1.86 %
Jan 18	256,043	Jan 20	256,394	-0.14 %	YEAR TO DATE, FIRST 3 WEEKS		

AMERICAN IRON AND STEEL INSTITUTE
 25 Massachusetts Avenue, NW, Suite 800
 Washington, D.C. 20001

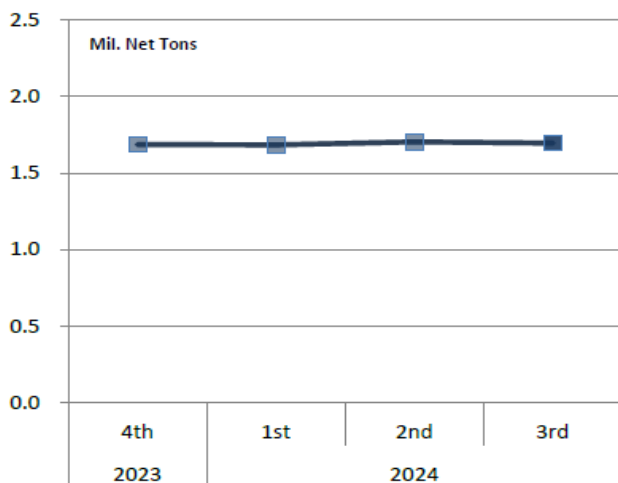
January 21, 2024

ESTIMATED WEEKLY RAW STEEL * PRODUCTION

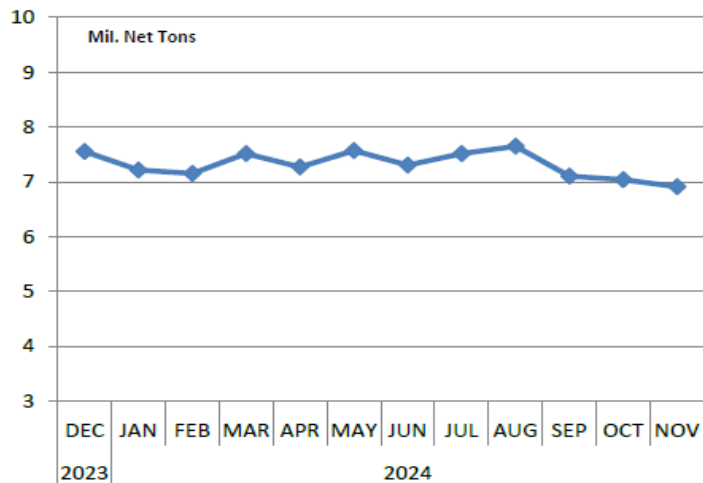
<u>Period</u>	<u>Thousand Net Tons</u>	<u>Percent Change from Previous Period</u>	<u>Percent Capability Utilization**</u>	<u>Production by District</u>		
				<u>Week Ending</u>		
				<u>Jan 18</u>	<u>Jan 11</u>	
<u>Week Ending</u>				North East	118	128
				Great Lakes	495	483
Jan 18, 2025	1,644	-0.9	73.8	Midwest	241	240
Jan 18, 2024	1,629	0.9	73.3	Southern	731	750
Jan 11, 2025	1,659	1.5	74.5	Western	59	58
				Total	1,644	1,659
<u>Year-to-Date +</u>						
Jan 18, 2025	4,237	1.1	74.0			
Jan 18, 2024	4,189	-	73.3			

*Raw steel production tonnage included in this report is estimated based on a sampling of steel producers (50% of domestic producers). Therefore, this report should be used primarily to assess production trends. The AISI production report "AIS 7," produced monthly and available by subscription, provides a more accurate summary of steel production based on data supplied by companies representing approximately 75% of U.S. production capacity plus includes revisions for previous months.

Average Weekly Raw Steel Production



Monthly Raw Steel Production



*Steel in the first solid state after melting suitable for further processing or sale, including ingots, steel for castings and strand or pressure cast blooms, slabs or other product forms. ** Based on tonnage capability to produce raw steel for a sustained full order book.

**EI WEEKLY ELECTRIC OUTPUT BY GEOGRAPHIC DIVISION
(48 CONTIGUOUS STATES)**

	Week Ended			NMA CUMULATIVE JANUARY WEEK ONE TO			52 Weeks Ended		
	18-Jan 2025 GWh Output	20-Jan 2024 GWh Output	% Increase Over Corresponding Week	18-Jan 2025 GWh Output	20-Jan 2024 GWh Output	% Increase Over Corresponding Week	18-Jan 2025 GWh Output	20-Jan 2024 GWh Output	% Increase Over Corresponding Week
New England	2,495	2,582	-3.4%	7,353	7,242	1.5%	113,064	111,417	1.5%
Mid-Atlantic	9,019	9,368	-3.7%	26,221	25,461	3.0%	414,693	404,607	2.5%
Central Industrial	14,187	15,487	-8.4%	41,216	41,676	-1.1%	652,502	639,789	2.0%
West Central	6,887	7,505	-8.2%	19,977	20,675	-3.4%	332,933	338,622	-1.7%
Southeast	22,665	24,002	-5.6%	66,688	64,986	2.6%	1,037,600	1,013,946	2.3%
South Central	17,205	20,031	-14.1%	51,679	51,900	-0.4%	894,313	874,602	2.3%
Rocky Mountain	6,137	6,117	0.3%	17,457	17,836	-2.1%	304,128	294,534	3.3%
Pacific Northwest	3,825	4,303	-11.1%	10,887	11,901	-8.5%	158,691	160,209	-0.9%
Pacific Southwest	4,923	4,871	1.1%	14,564	14,715	-1.0%	273,398	267,375	2.3%
Total United States ^{1/}	87,343	94,266	-7.3%	256,043	256,392	-0.1%	4,181,322	4,105,101	1.9%
Coal Regions Only ^{2/}	76,100	82,510	-7.8%	223,239	222,534	0.3%	3,636,169	3,566,100	2.0%

Notes: EEI output data are an estimate of electricity load made available for distribution derived as weekly net generation + purchases from non-utilities + net imports - exports - sales for resale. It is not meant to be a measure of electricity generation for the U.S. EEI survey data represent the majority of national distribution (large utilities, large government power projects, some independent and large municipal power projects). The remaining segment of the industry (smaller producers) is estimated. Non-utility generation is captured via direct sales to utilities.

^{1/} Excludes Alaska and Hawaii

^{2/} Excludes New England and Pacific regions

SOURCE: Edison Electric Institute (EEI), *Weekly Electric Output Report*.

U.S. Rail Traffic¹
 Week 3, 2025 – Ended January 18, 2025

	This Week		Year-To-Date		
	Cars	vs 2024	Cumulative	Avg/wk ²	vs 2024
Total Carloads	216,457	25.1%	614,468	204,823	3.4%
Chemicals	34,150	22.8%	97,227	32,409	8.1%
Coal	59,223	24.6%	167,926	55,975	0.2%
Farm Products excl. Grain, and Food	18,048	34.9%	51,953	17,318	13.5%
Forest Products	8,319	19.6%	24,913	8,304	8.3%
Grain	20,717	31.2%	62,789	20,930	11.7%
Metallic Ores and Metals	17,680	1.8%	53,176	17,725	-8.5%
Motor Vehicles and Parts	13,755	43.7%	29,991	9,997	-8.2%
Nonmetallic Minerals	24,622	32.2%	69,804	23,268	2.1%
Petroleum and Petroleum Products	10,643	24.9%	32,241	10,747	11.8%
Other	9,300	24.0%	24,448	8,149	3.2%
Total Intermodal Units	283,703	26.5%	772,492	257,497	14.0%
Total Traffic	500,160	25.9%	1,386,960	462,320	9.1%

¹ Excludes U.S. operations of CPKC, CN and GMXT.

² Average per week figures may not sum to totals as a result of independent rounding.

Source: AAR website - <https://www.aar.org/Pages/NEWS-and-EVENTS.aspx>

Copper, Gold and Silver Prices

Copper Prices:

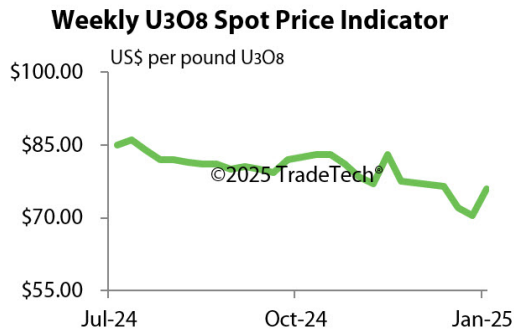


Gold and Silver Prices:



Source: Dailymetalprice.com - <https://www.dailymetalprice.com/metalprices.php>

Trade Tech's and UX's Uranium Price Indicators



Sources: Trade Tech, Uranium Info Website – www.uranium.info ; Source: Ux Consulting Co., LLC – <http://www.uxc.com>

Coal stocks and average number of days of burn for non-lignite coal by region (electric power sector)

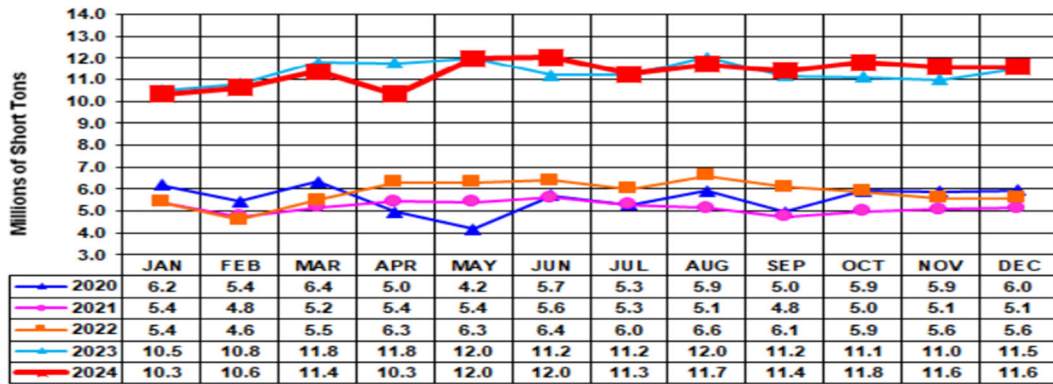
Zone	Coal	October 2024		October 2023		% Change of Stocks	September 2024		% Change of Stocks
		Stocks (1000 tons)	Days of Burn	Stocks (1000 tons)	Days of Burn		Stocks (1000 tons)	Days of Burn	
Northeast	Bituminous	2,150	174	2,211	254	-2.8%	2,056	217	4.6%
	Subbituminous	-	-	-	-	-	-	-	-
South	Bituminous	20,339	143	21,236	159	-4.2%	19,429	147	4.7%
	Subbituminous	5,962	96	6,131	106	-2.7%	6,008	106	-0.8%
Midwest	Bituminous	11,869	131	13,003	141	-8.7%	11,299	133	5.0%
	Subbituminous	33,706	146	30,663	160	9.9%	31,779	145	6.1%
West	Bituminous	3,292	228	2,634	169	25.0%	3,372	219	-2.4%
	Subbituminous	30,183	158	30,096	174	0.3%	29,152	153	3.5%
U.S. Total	Bituminous	37,649	144	39,083	155	-3.7%	36,156	148	4.1%
	Subbituminous	69,852	143	66,889	157	4.4%	66,938	143	4.4%

Source: U.S. Energy Information Administration

NOTE: Stockpile levels shown above reflect a sample of electric power sector plants, which were used to create the days of burn statistics. These levels will not equal total electric power sector stockpile levels.

Source: Energy Information Administration, Electric Monthly Update

Coal and Coke Monthly Indicator for Internal U.S. Waterways



For the Internal U.S. Waterway Monthly Indicators, estimates for the most recent month are based on lock performance management data. The estimates will be superseded by actual data as it becomes available.

Source: Waterborne Commerce Statistics Center

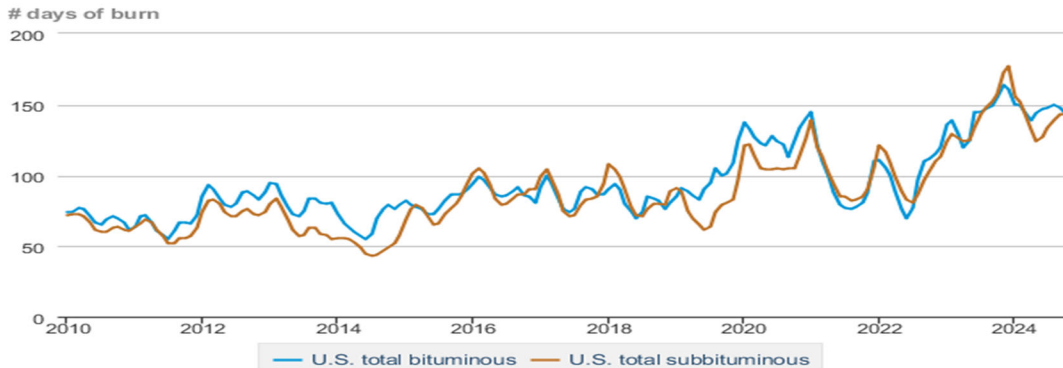
Average weekly coal commodity spot prices dollars per short ton

	Week ending					Week ago change
	12/20/24	12/27/24	01/03/25	01/10/25	01/17/25	
Central Appalachia 12,500 Btu, 1.2 SO ₂	\$75.25	\$75.25	\$75.00	\$77.30	\$77.30	\$0.00
Northern Appalachia 13,000 Btu, < 3.0 SO ₂	\$49.00	\$49.00	\$49.00	\$50.50	\$50.50	\$0.00
Illinois Basin 11,800 Btu, 5.0 SO ₂	\$44.00	\$44.00	\$44.00	\$44.00	\$44.00	\$0.00
Powder River Basin 8,800 Btu, 0.8 SO ₂	\$14.20	\$14.20	\$14.20	\$14.15	\$14.15	\$0.00

Data source: With permission, [S&P Global](#)

Source: Energy Information Administration (with permission from S&P Global), *Coal Market Report*

Days of burn by non-lignite coal rank, January 2010 - October 2024



Data source: U.S. Energy Information Administration

Source: Energy Information Administration, *Electricity Monthly Update Report*

Temperature – heating & cooling degree days (week ending Jan 09)

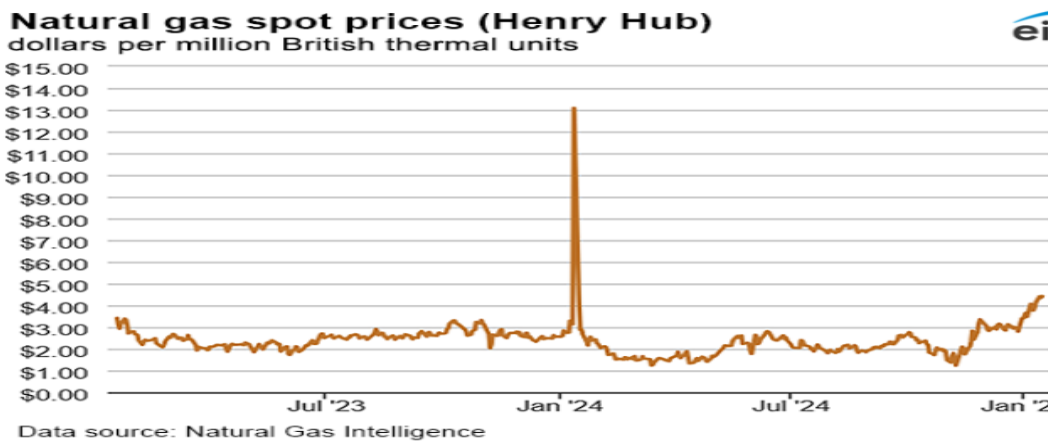
Region	HDDs			CDDs		
	Current total	Deviation from normal	Deviation from last year	Current total	Deviation from normal	Deviation from last year
New England	282	12	33	0	0	0
Middle Atlantic	272	14	40	0	0	0
E N Central	313	20	74	0	0	0
W N Central	352	36	89	0	0	0
South Atlantic	222	40	49	1	-6	-2
E S Central	227	38	40	0	-2	0
W S Central	164	23	22	1	-2	1
Mountain	229	-7	-24	0	0	0
Pacific	101	23	-42	0	0	0
United States	239	14	32	0	-2	0

Data source: National Oceanic and Atmospheric Administration
Note: HDDs=heating degree days; CDDs=cooling degree days

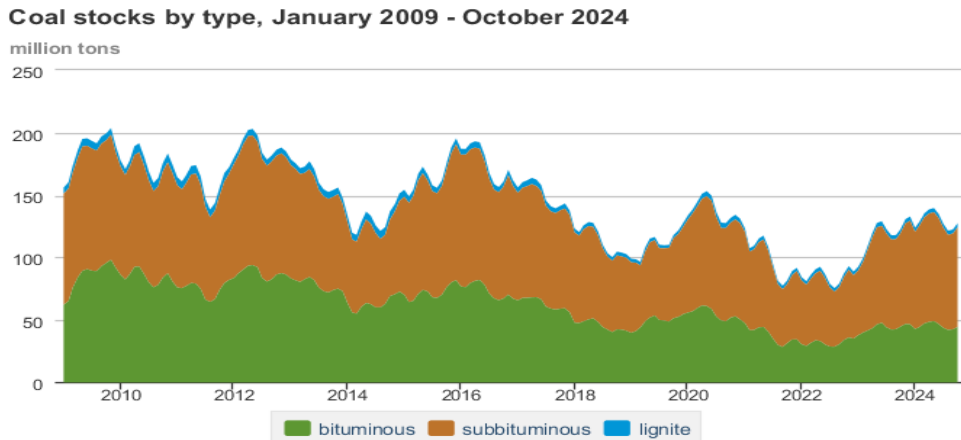
Source: Energy Information Administration, *Natural Gas Weekly Update*.

U.S. Production of Selected Mineral Commodities	2024 Year to Date - 3rd Quarter	2023 Year to Date - 3rd Quarter	Percent Change
Aluminum, secondary (000 Mt.)	670.0	686.0	-2%
Cement (Mil. Mt.)	62.5	66.9	-7%
Copper (000 Mt.)	777.0	835.0	-7%
Gold (Mt.)	118.0	124.0	-5%
Gypsum (Mil. Mt.)	14.2	14.0	1%
Iron Ore (Mil. Mt.)	34.6	32.9	5%
Lead (000 Mt.)	217.0	200.0	9%
Molybdenum (000 Mt.)	25.1	25.0	0%
Palladium (Mt.)	8.4	7.5	12%
Phosphate rock (Mil. Mt.)	14.9	14.9	0%
Platinum (Mt.)	2.5	2.2	14%
Sand & gravel, construction (Mil. Mt.)	684.0	731.0	-6%
Silver (Mt.)	771.0	764.0	1%
Soda ash (Mil. Mt.)	8.7	8.1	7%
Stone, crushed (Mil. Mt.)	1,110.0	1,170.0	-5%
Zinc (000 Mt.)	564.0	544.0	4%

Source: U.S. Geological Survey, Mineral Industry Surveys. Percent change based on USGS rounded numbers. 2024 data are preliminary estimates. W - withheld, N/A - not available



Source: Energy Information Administration, *Natural Gas Weekly*.



Data source: U.S. Energy Information Administration

Source: Energy Information Administration, *Electricity Monthly Update*

Mining-Related Commodity Prices

Commodity Price - Snapshot		
Metals Prices	Date	Price
Cobalt Spot Price (\$/lb)	1/20/25	\$11.02
Copper Spot Price (\$/lb)	1/20/25	\$4.29
Gold Spot Price (\$/ounce)	1/20/25	\$2,744.50
Lead Spot Price (\$/lb)	1/20/25	\$0.89
Lithium Spot Price (\$/kg)	1/20/25	\$10.64
Molybdenum Spot Price (\$/kg)	1/20/25	\$64.13
Nickel Spot Price (\$/lb)	1/20/25	\$7.28
Silver Spot Price (\$/ounce)	1/20/25	\$30.25
Steel HRC Price (\$/mt)	1/20/25	\$694.32
Steel Rebar Price (\$/mt)	1/20/25	\$452.80
Zinc Spot Price (\$/lb)	1/20/25	\$1.34
Energy Prices	Date	Price
Coal Price - Australian Premium Coking Coal Futures (\$/mt)	1/20/25	\$196.00
Coal Spot Price - Central Appalachian (\$/st)	1/17/25	\$77.30
Coal Spot Price - Newcastle futures (\$/mt)	1/20/25	\$117.45
Coal Spot Price - Rotterdam futures (\$/mt)	1/20/25	\$112.20
Natural Gas Spot Price - Henry Hub (\$/mmbtu)	1/15/25	\$4.43
Uranium Spot Price (\$/lb)	1/17/25	\$73.95

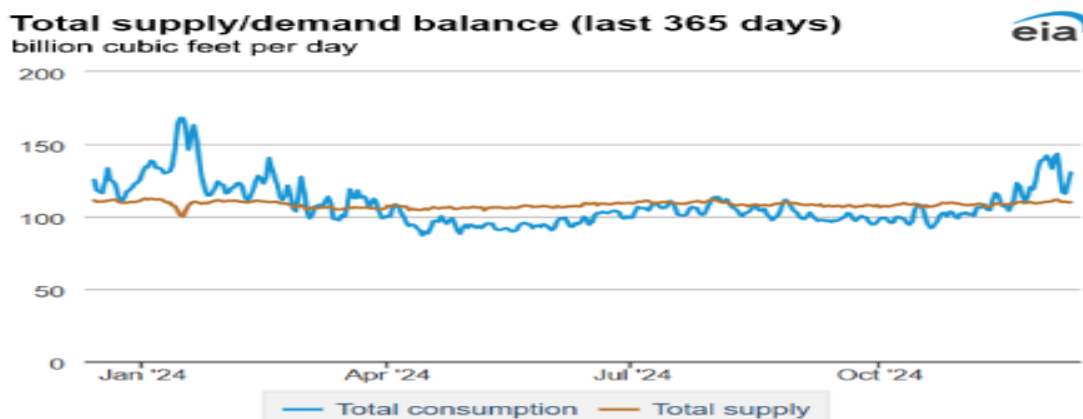
Sources: publically available data from eia.gov, dailymetalprice.com, tradingeconomics.com, sgxgroup.com, investing.com

EIA Working Natural Gas Underground Storage

Region	Working gas in underground storage		
	2025-01-10	2025-01-03	change
East	669	737	-68
Midwest	808	881	-73
Mountain	240	255	-15
Pacific	283	293	-10
South Central	1,114	1,207	-93
Total	3,115	3,373	-258

Data source: U.S. Energy Information Administration Form EIA-912, *Weekly Underground Natural Gas Storage Report*
 Note: Totals may not equal sum of components because of independent rounding.

Source: Energy Information Administration, *Natural Gas Weekly Update*



Data source: S&P Global Commodity Insights

Source: Energy Information Administration, *Natural Gas Weekly Update*

USGS Cobalt – U.S. Trade, Reported Stocks and Listed Prices

Cobalt - October 2024	Oct-24	Year to Date
U.S. Imports for Consumption - Metals (mt)	590	7,000
U.S. Exports of Cobalt Materials - Cobalt Content (mt)	370	3,770
Reported LME Stocks of Cobalt Metal (mt)	130	-
Listed Prices by Type (\$/lb): US Spot & LME Cash Avg.	15.90	10.88

Source: USGS, Mineral Industry Survey, Cobalt in October 2024, December 2024

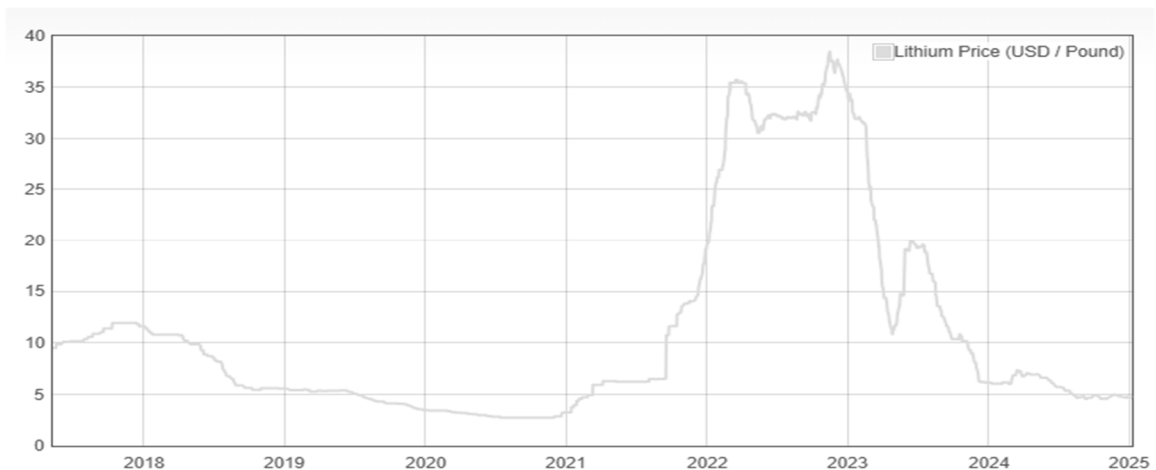
Cobalt and Lithium Prices

Cobalt Prices (US\$/pound):



Source: Dailymetalprice.com - <https://www.dailymetalprice.com/metalpricecharts.php?c=co&u=lb&d=0>

Lithium Prices (US\$/pound):



Source: Dailymetalprice.com - <https://www.dailymetalprice.com/metalpricecharts.php>