



NATIONAL MINING ASSOCIATION

WEEKLY STATISTICAL SUMMARY

January 31, 2025 Edition
(Data for Week Ending January 25, 2025)

Prepared by
National Mining Association

101 Constitution Avenue NW, Suite 500 East
Washington, DC 20001
(202) 463-2600
www.nma.org



NMA WEEKLY STATISTICAL SUMMARY

Vol. 62, No. 4 | Dated 01/31/25

COAL PRODUCTION, CONSUMPTION & TRADE

	Week Ended			* Cumulative Jan 1 to		
	1/25/25	1/27/24	% Chg	1/25/25	1/25/24	% Chg
EIA Coal Production (000 Tons):						
Week Ended/Year to Date	9,318	10,007	-6.9%	34,874	34,993	-0.3%
52 Weeks Ended	508,812	568,931	-10.6%			
AAR Coal Rail Cars Loaded:	52,514	57,231	-8.2%	196,061	201,556	-2.7%
EIA Coal Production	Dec 24/23		% Chg	Jan - Dec 24/23		% Chg
Month Ended - December	43,183	45,711	-5.5%	511,733	577,954	-11.5%

U.S. Department of Commerce Coal Trade (000 Tons)

	November 24/23		% Chg	Jan - Nov 24/23		% Chg
Coal Exports:						
Metallurgical	5,453	4,208	29.6%	51,270	47,089	8.9%
Steam Bit. *	3,914	3,982	-1.7%	46,331	43,504	6.5%
Lignite	3	7	-57.1%	140	87	60.9%
Anthracite	<u>53</u>	<u>61</u>	-13.1%	<u>678</u>	<u>690</u>	-1.7%
Total	9,423	8,258	14.1%	98,419	91,370	7.7%
Coal Imports:	167	335	-50.1%	1,871	3,777	-50.5%

	Week Ended			Cumulative Week 1 to		
	1/25/25	1/27/24	% Chg	1/25/25	1/27/24	% Chg
EI Electric Total Output (Mil. Kwh)	97,259	80,177	21.3%	353,301	336,571	5.0%
EI Coal Region Output (Mil. Kwh)	85,545	69,532	23.0%	308,783	292,066	5.7%
AISI Raw Steel Output (000 Tons)	1,641	1,629	0.7%	5,878	5,818	1.0%

EIA AVERAGE COAL & NATURAL GAS SPOT PRICES

Dollars Per Short Ton

Average Coal Spot Prices (\$/Short Ton)	Week Ending			Natural Gas Spot Prices (\$/MMBtu)	
	01/24/25	01/17/25	% Chg	Wed.	01/22/25
Central App, 12,500 Btu, 1.2 SO ₂	\$76.50	\$77.30	-1.0%	Henry Hub	3.89
Northern App, 13,000 Btu, < 3.0 SO ₂	51.00	50.50	1.0%	New York	17.54
Illinois Basin, 11,800, 5.0 SO ₂	44.50	44.00	1.1%	Chicago	3.81
Powder River Basin, 8,800 Btu 0.8 SO ₂	14.20	14.15	0.4%	Cal.Comp.Avg.	3.66

Coal exports and Imports are "as reported" (not revised); *Steam bit. excludes lignite & anthracite. All data in this report are preliminary and subject to revision. r/ revised.

Sources: EIA; Edison Electric Institute; American Iron & Steel Institute; Association of American Railroads; Dept. of Commerce; S&P Global



EIA Estimated Weekly U.S. Coal Production Overview									
Coal-Producing Region & State (thousand short tons)	Week Ended			Year to Date			52 Weeks Ended		
	1/25/2025 (week 4)	1/18/2025 (week 3)	1/27/2024 (week 4)	1/25/2025	1/25/2024	% Change	1/25/2025	1/27/2024	% Change
Alabama	313	355	277	1,193	967	23.4	14,596	12,217	19.5
Alaska	19	22	23	73	81	-10.0	955	1,007	-5.2
Colorado	280	317	265	1,051	925	13.7	13,250	12,492	6.1
Illinois	713	798	750	2,660	2,623	1.4	36,030	36,773	-2.0
Indiana	368	415	423	1,382	1,478	-6.5	19,936	23,267	-14.3
Kentucky total	463	515	508	1,723	1,776	-3.0	24,451	27,724	-11.8
Eastern (KY)	191	212	208	707	727	-2.7	10,296	12,051	-14.6
Western (KY)	272	304	300	1,015	1,049	-3.2	14,156	15,673	-9.7
Louisiana	4	5	5	17	19	-11.7	256	285	-10.2
Maryland	26	29	27	96	94	3.0	1,290	1,277	1.0
Mississippi	38	39	21	130	73	78.6	2,162	2,578	-16.1
Missouri	3	3	3	12	10	18.5	156	139	12.2
Montana	488	554	497	1,829	1,737	5.3	27,023	28,772	-6.1
New Mexico	122	137	138	464	481	-3.6	7,091	7,842	-9.6
North Dakota	511	570	514	1,910	1,796	6.4	25,248	23,910	5.6
Ohio	34	37	37	125	129	-3.6	1,716	1,898	-9.6
Oklahoma	s	s	s	s	s	121.9	1	2	-50.0
Pennsylvania total	771	871	771	2,887	2,695	7.1	40,810	42,263	-3.4
Anthracite (PA)	62	71	60	237	210	13.3	3,129	2,939	6.5
Bituminous (PA)	709	800	711	2,649	2,485	6.6	37,681	39,324	-4.2
Texas	194	224	212	733	743	-1.3	11,630	13,461	-13.6
Utah	110	138	145	446	509	-12.4	6,783	6,830	-0.7
Virginia	178	194	180	652	628	3.9	9,451	10,341	-8.6
West Virginia total	1,522	1,690	1,550	5,668	5,419	4.6	79,142	83,492	-5.2
Northern (WV)	758	827	765	2,780	2,675	3.9	39,797	43,770	-9.1
Southern (WV)	763	863	785	2,889	2,744	5.3	39,345	39,723	-1.0
Wyoming	3,161	3,614	3,664	11,823	12,812	-7.7	186,835	232,361	-19.6
Appalachian total	3,034	3,387	3,048	11,328	10,659	6.3	157,301	163,538	-3.8
Interior total	1,593	1,788	1,714	5,949	5,994	-0.8	84,326	92,179	-8.5
Western total	4,691	5,353	5,245	17,597	18,340	-4.1	267,185	313,214	-14.7
East of Mississippi River	4,426	4,943	4,542	16,516	15,881	4.0	229,586	241,829	-5.1
West of Mississippi River	4,892	5,586	5,465	18,358	19,112	-3.9	279,226	327,101	-14.6
Bituminous and lignite	9,256	10,457	9,947	34,636	34,784	-0.4	505,683	565,992	-10.7
Anthracite	62	71	60	237	210	13.3	3,129	2,939	6.5
U.S. total	9,318	10,528	10,007	34,874	34,993	-0.3	508,812	568,931	-10.6
Railroad cars loaded	52,514	59,223	57,231	196,081	201,556	-2.7	2,936,838	3,371,862	-12.9

Source: Energy Information Administration



Weekly Electric Output

Volume 93 No. 4

OUTPUT FOR WEEK ENDED - Jan 25, 2025

The net available amount of electric energy distributed by the Total Electric Utility Industry+ for the week ended Saturday, **Jan 25, 2025** was **97,259** gigawatthours (GWh), according to the Edison Electric Institute.

WEEKLY ELECTRIC OUTPUT BY GEOGRAPHIC DIVISION

(48 CONTIGUOUS STATES)

	Week Ended January 25		52 Weeks Ended January 25	
	GWh Output	% Increase Over Corresponding Week of 2024	GWh Output	% Increase Over Corresponding Week of 2024
New England	2,709	11.51 %	113,343	1.62 %
Mid-Atlantic	9,878	17.51 %	416,165	2.79 %
Central Industrial	15,580	17.05 %	654,772	2.32 %
West Central	7,480	10.84 %	333,665	-1.48 %
Southeast	26,016	32.37 %	1,043,962	2.93 %
South Central	20,152	28.74 %	898,812	2.71 %
Rocky Mountain	6,438	11.74 %	304,804	3.60 %
Pacific Northwest	4,092	18.65 %	159,334	-0.48 %
Pacific Southwest	4,913	3.08 %	273,545	2.34 %
Total United States	97,259	21.30 %	4,198,401	2.25 %

WEEKLY ELECTRIC OUTPUT IN PREVIOUS WEEKS--GWh

Week Ended	2025	Week Ended	2024	% Inc. (25/24)	52 Weeks Ended	2025	% Inc. (25/24)
Jan 04	77,518	Jan 06	79,691	-2.73 %	Jan 04	4,179,498	2.37 %
Jan 11	91,182	Jan 13	82,435	10.61 %	Jan 11	4,188,244	2.46 %
Jan 18	87,343	Jan 20	94,267	-7.35 %	Jan 18	4,181,320	1.86 %
Jan 25	97,259	Jan 27	80,177	21.30 %	Jan 25	4,198,401	2.25 %
Jan 25	353,301	Jan 27	336,571	4.97 %	YEAR TO DATE, FIRST 4 WEEKS		

EEI WEEKLY ELECTRIC OUTPUT BY GEOGRAPHIC DIVISION (48 CONTIGUOUS STATES)

	Week Ended			NMA CUMULATIVE JANUARY WEEK ONE TO			52 Weeks Ended		
	25-Jan 2025 GWh Output	27-Jan 2024 GWh Output	% Increase Over Corresponding Week	25-Jan 2025 GWh Output	27-Jan 2024 GWh Output	% Increase Over Corresponding Week	25-Jan 2025 GWh Output	27-Jan 2024 GWh Output	% Increase Over Corresponding Week
New England	2,709	2,430	11.5%	10,062	9,672	4.0%	113,343	111,526	1.6%
Mid-Atlantic	9,878	8,406	17.5%	36,099	33,867	6.6%	416,165	404,864	2.8%
Central Industrial	15,580	13,310	17.1%	56,796	54,986	3.3%	654,772	639,950	2.3%
West Central	7,480	6,748	10.8%	27,457	27,423	0.1%	333,665	338,679	-1.5%
Southeast	26,016	19,654	32.4%	92,705	84,640	9.5%	1,043,962	1,014,200	2.9%
South Central	20,152	15,652	28.8%	71,831	67,552	6.3%	898,812	875,072	2.7%
Rocky Mountain	6,438	5,762	11.7%	23,895	23,598	1.3%	304,804	294,220	3.6%
Pacific Northwest	4,092	3,449	18.6%	14,979	15,350	-2.4%	159,334	160,106	-0.5%
Pacific Southwest	4,913	4,766	3.1%	19,477	19,481	0.0%	273,545	267,284	2.3%
Total United States ^{1/}	97,259	80,177	21.3%	353,301	336,569	5.0%	4,198,402	4,105,901	2.3%
Coal Regions Only ^{2/}	85,545	69,532	23.0%	308,783	292,066	5.7%	3,652,180	3,566,985	2.4%

Notes: EEI output data are an estimate of electricity load made available for distribution derived as weekly net generation + purchases from non-utilities + net imports - exports - sales for resale. It is not meant to be a measure of electricity generation for the U.S. EEI survey data represent the majority of national distribution (large utilities, large government power projects, some independent and large municipal power projects). The remaining segment of the industry (smaller producers) is estimated. Non-utility generation is captured via direct sales to utilities.

^{1/} Excludes Alaska and Hawaii

^{2/} Excludes New England and Pacific regions

SOURCE: Edison Electric Institute (EEI), *Weekly Electric Output Report*.

AMERICAN IRON AND STEEL INSTITUTE
 25 Massachusetts Avenue, NW, Suite 800
 Washington, D.C. 20001

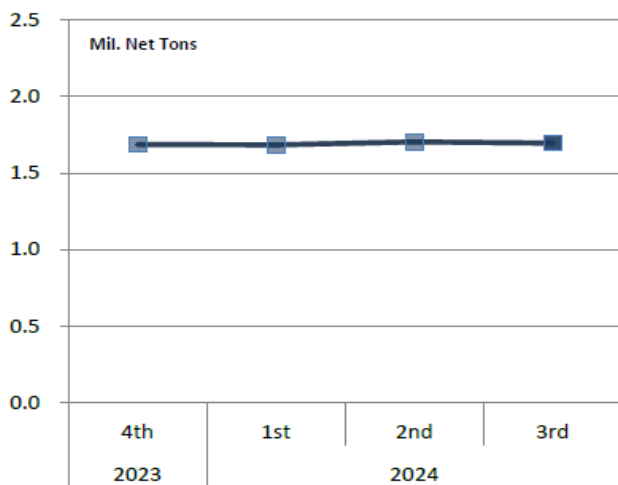
January 27, 2025

ESTIMATED WEEKLY RAW STEEL * PRODUCTION

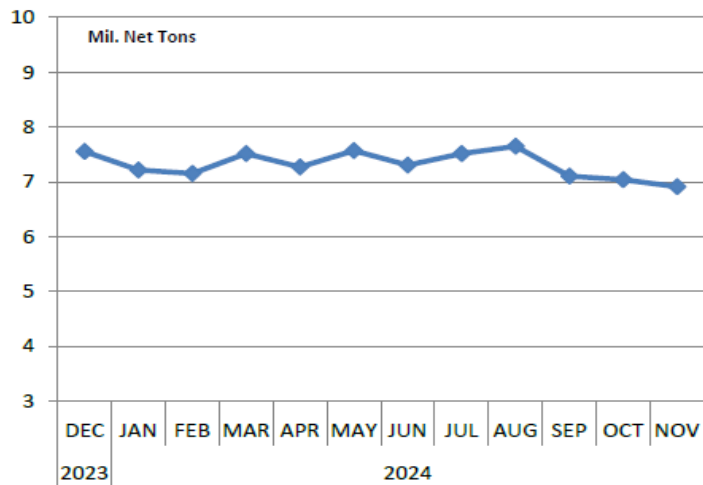
<u>Period</u>	<u>Thousand Net Tons</u>	<u>Percent Change from Previous Period</u>	<u>Percent Capability Utilization**</u>	<u>Production by District</u>		
				<u>Week Ending</u>		
				<u>Jan 25</u>	<u>Jan 18</u>	
<u>Week Ending</u>				North East	123	118
				Great Lakes	505	495
Jan 25, 2025	1,641	-0.2	73.7	Midwest	245	241
Jan 25, 2024	1,629	0.7	73.3	Southern	703	731
Jan 18, 2025	1,644	-0.9	73.8	Western	65	59
				Total	1,641	1,644
<u>Year-to-Date +</u>						
Jan 25, 2025	5,878	1.0	73.9			
Jan 25, 2024	5,818	-	73.3			

*Raw steel production tonnage included in this report is estimated based on a sampling of steel producers (50% of domestic producers). Therefore, this report should be used primarily to assess production trends. The AISI production report "AIS 7," produced monthly and available by subscription, provides a more accurate summary of steel production based on data supplied by companies representing approximately 75% of U.S. production capacity plus includes revisions for previous months.

Average Weekly Raw Steel Production



Monthly Raw Steel Production



*Steel in the first solid state after melting suitable for further processing or sale, including ingots, steel for castings and strand or pressure cast blooms, slabs or other product forms. ** Based on tonnage capability to produce raw steel for a sustained full order book.

U.S. Rail Traffic¹
Week 4, 2025 – Ended January 25, 2025

	This Week		Year-To-Date		
	Cars	vs 2024	Cumulative	Avg/wk ²	vs 2024
Total Carloads	189,125	-8.8%	803,593	200,898	0.3%
Chemicals	28,789	-4.3%	126,016	31,504	5.0%
Coal	52,514	-7.3%	220,440	55,110	-1.7%
Farm Products excl. Grain, and Food	16,180	2.3%	68,133	17,033	10.6%
Forest Products	7,717	-6.4%	32,630	8,158	4.4%
Grain	19,277	-8.3%	82,066	20,517	6.3%
Metallic Ores and Metals	16,218	-16.9%	69,394	17,349	-10.6%
Motor Vehicles and Parts	12,083	-12.1%	42,074	10,519	-9.4%
Nonmetallic Minerals	19,173	-17.7%	88,977	22,244	-2.9%
Petroleum and Petroleum Products	9,344	-12.3%	41,585	10,396	5.3%
Other	7,830	-6.0%	32,278	8,070	0.8%
Total Intermodal Units	265,672	2.5%	1,038,164	259,541	10.9%
Total Traffic	454,797	-2.5%	1,841,757	460,439	6.0%

¹ Excludes U.S. operations of CPKC, CN and GMXT.

² Average per week figures may not sum to totals as a result of independent rounding.

Source: AAR website - <https://www.aar.org/Pages/NEWS-and-EVENTS.aspx>

Copper, Gold and Silver Prices

Copper Prices:

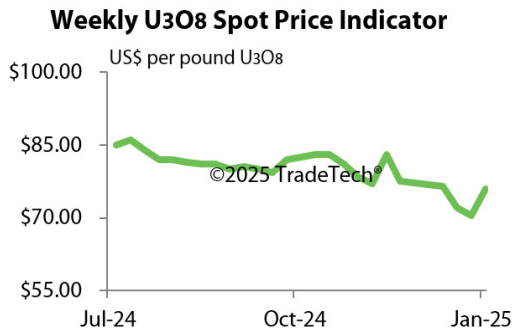


Gold and Silver Prices:



Source: Dailymetalprice.com - <https://www.dailymetalprice.com/metalprices.php>

Trade Tech's and UX's Uranium Price Indicators



Sources: Trade Tech, Uranium Info Website – www.uranium.info ; Source: Ux Consulting Co., LLC – <http://www.uxc.com>

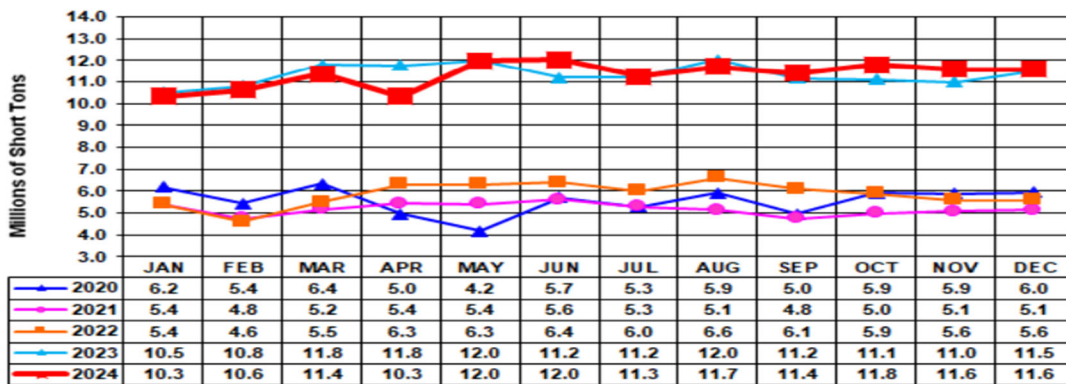
Coal stocks and average number of days of burn for non-lignite coal by region (electric power sector)

Zone	Coal	November 2024		November 2023		% Change of Stocks	October 2024		% Change of Stocks
		Stocks (1000 tons)	Days of Burn	Stocks (1000 tons)	Days of Burn		Stocks (1000 tons)	Days of Burn	
Northeast	Bituminous	2,127	166	2,442	251	-12.9%	2,150	174	-1.1%
	Subbituminous	-	-	-	-	-	-	-	-
South	Bituminous	20,805	151	22,615	165	-8.0%	20,339	143	2.3%
	Subbituminous	6,284	102	6,598	113	-4.8%	5,962	96	5.4%
Midwest	Bituminous	12,472	145	13,260	148	-5.9%	11,869	131	5.1%
	Subbituminous	33,699	154	33,303	179	1.2%	33,706	146	-0.0%
West	Bituminous	3,145	221	2,755	190	14.2%	3,292	228	-4.5%
	Subbituminous	31,176	172	31,390	183	-0.7%	30,183	158	3.3%
U.S. Total	Bituminous	38,549	154	41,073	164	-6.1%	37,649	144	2.4%
	Subbituminous	71,158	155	71,291	173	-0.2%	69,852	143	1.9%

Source: U.S. Energy Information Administration

Source: Energy Information Administration, Electric Monthly Update

Coal and Coke Monthly Indicator for Internal U.S. Waterways



For the Internal U.S. Waterway Monthly Indicators, estimates for the most recent month are based on lock performance management data. The estimates will be superseded by actual data as it becomes available.

Source: Waterborne Commerce Statistics Center

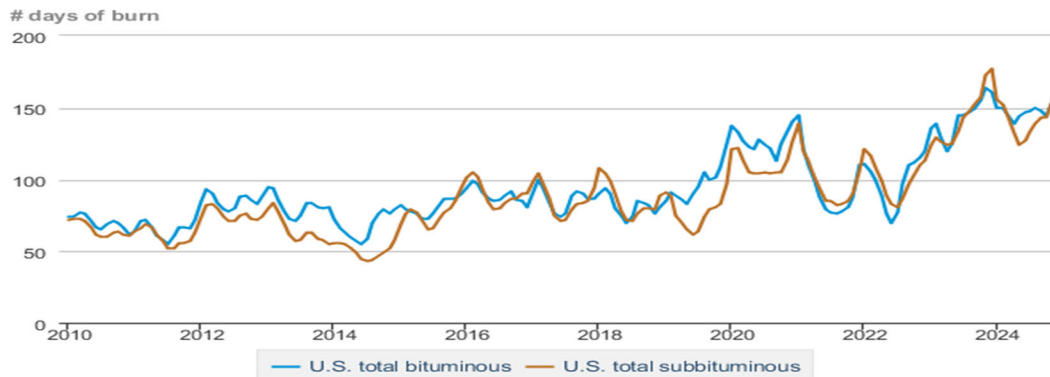
Average weekly coal commodity spot prices dollars per short ton

	Week ending					Week ago change
	12/27/24	01/03/25	01/10/25	01/17/25	01/24/25	
Central Appalachia 12,500 Btu, 1.2 SO ₂	\$75.25	\$75.00	\$77.30	\$77.30	\$76.50	\$-0.80
Northern Appalachia 13,000 Btu, < 3.0 SO ₂	\$49.00	\$49.00	\$50.50	\$50.50	\$51.00	\$0.50
Illinois Basin 11,800 Btu, 5.0 SO ₂	\$44.00	\$44.00	\$44.00	\$44.00	\$44.50	\$0.50
Powder River Basin 8,800 Btu, 0.8 SO ₂	\$14.20	\$14.20	\$14.15	\$14.15	\$14.20	\$0.05

Data source: With permission, S&P Global

Source: Energy Information Administration (with permission from S&P Global), *Coal Market Report*

Days of burn by non-lignite coal rank, January 2010 - November 2024



Data source: U.S. Energy Information Administration

Source: Energy Information Administration, *Electricity Monthly Update Report*

Temperature – heating & cooling degree days (week ending Jan 16)

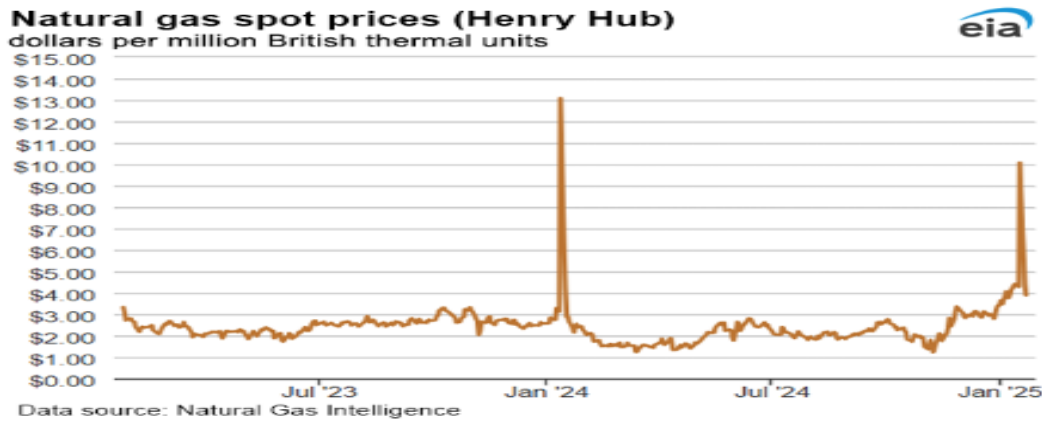
Region	HDDs			CDDs		
	Current total	Deviation from normal	Deviation from last year	Current total	Deviation from normal	Deviation from last year
New England	271	-3	55	0	0	0
Middle Atlantic	270	8	38	0	0	0
E N Central	316	19	-5	0	0	0
W N Central	319	0	-85	0	0	0
South Atlantic	223	39	52	0	-8	-2
E S Central	225	35	8	0	-2	0
W S Central	163	22	-39	0	-3	0
Mountain	246	11	-41	0	0	0
Pacific	116	-7	-29	0	-1	0
United States	239	13	-8	0	-2	0

Data source: National Oceanic and Atmospheric Administration
Note: HDDs=heating degree days; CDDs=cooling degree days

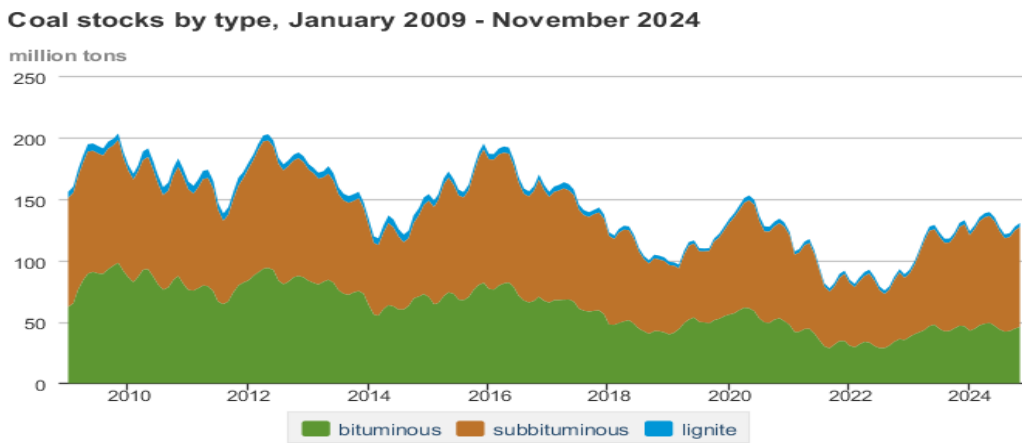
Source: Energy Information Administration, *Natural Gas Weekly Update*.

U.S. Production of Selected Mineral Commodities	2024 Year to Date - 3rd Quarter	2023 Year to Date - 3rd Quarter	Percent Change
Aluminum, secondary (000 Mt.)	670.0	686.0	-2%
Cement (Mil. Mt.)	62.5	66.9	-7%
Copper (000 Mt.)	777.0	835.0	-7%
Gold (Mt.)	118.0	124.0	-5%
Gypsum (Mil. Mt.)	14.2	14.0	1%
Iron Ore (Mil. Mt.)	34.6	32.9	5%
Lead (000 Mt.)	217.0	200.0	9%
Molybdenum (000 Mt.)	25.1	25.0	0%
Palladium (Mt.)	8.4	7.5	12%
Phosphate rock (Mil. Mt.)	14.9	14.9	0%
Platinum (Mt.)	2.5	2.2	14%
Sand & gravel, construction (Mil. Mt.)	684.0	731.0	-6%
Silver (Mt.)	771.0	764.0	1%
Soda ash (Mil. Mt.)	8.7	8.1	7%
Stone, crushed (Mil. Mt.)	1,110.0	1,170.0	-5%
Zinc (000 Mt.)	564.0	544.0	4%

Source: U.S. Geological Survey, Mineral Industry Surveys. Percent change based on USGS rounded numbers. 2024 data are preliminary estimates. W - withheld, N/A - not available



Source: Energy Information Administration, *Natural Gas Weekly*.



Source: U.S. Energy Information Administration

Source: Energy Information Administration, *Electricity Monthly Update*

Mining-Related Commodity Prices

Commodity Price - Snapshot		
Metals Prices	Date	Price
Cobalt Spot Price (\$/lb)	1/27/25	\$11.02
Copper Spot Price (\$/lb)	1/27/25	\$4.20
Gold Spot Price (\$/ounce)	1/27/25	\$2,767.10
Lead Spot Price (\$/lb)	1/27/25	\$0.88
Lithium Spot Price (\$/kg)	1/27/25	\$10.73
Molybdenum Spot Price (\$/kg)	1/27/25	\$64.73
Nickel Spot Price (\$/lb)	1/27/25	\$7.06
Silver Spot Price (\$/ounce)	1/27/25	\$30.58
Steel HRC Price (\$/mt)	1/27/25	\$732.85
Steel Rebar Price (\$/mt)	1/27/25	\$456.34
Zinc Spot Price (\$/lb)	1/27/25	\$1.28
Energy Prices	Date	Price
Coal Price - Australian Premium Coking Coal Futures (\$/mt)	1/27/25	\$190.00
Coal Spot Price - Central Appalachian (\$/st)	1/24/25	\$76.50
Coal Spot Price - Newcastle futures (\$/mt)	1/27/25	\$114.04
Coal Spot Price - Rotterdam futures (\$/mt)	1/27/25	\$110.25
Natural Gas Spot Price - Henry Hub (\$/mmbtu)	1/22/25	\$3.89
Uranium Spot Price (\$/lb)	1/27/25	\$68.70

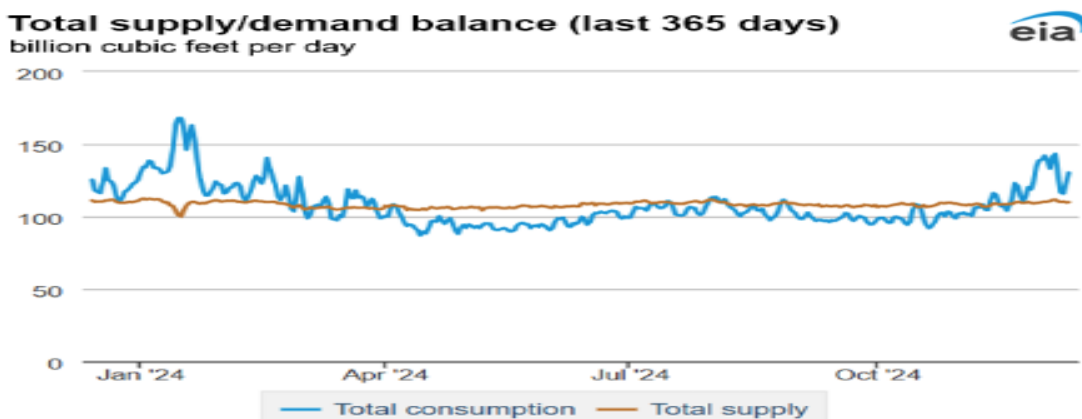
Sources: publically available data from eia.gov, dailymetalprice.com, tradingeconomics.com, sgxgroup.com, investing.com

EIA Working Natural Gas Underground Storage

Region	Stocks billion cubic feet (Bcf)		
	2025-01-17	2025-01-10	change
East	613	669	-56
Midwest	744	808	-64
Mountain	229	240	-11
Pacific	269	283	-14
South Central	1,037	1,114	-77
Total	2,892	3,115	-223

Data source: U.S. Energy Information Administration Form EIA-912, *Weekly Underground Natural Gas Storage Report*
 Note: Totals may not equal sum of components because of independent rounding.

Source: Energy Information Administration, *Natural Gas Weekly Update*



Data source: S&P Global Commodity Insights

Source: Energy Information Administration, *Natural Gas Weekly Update*

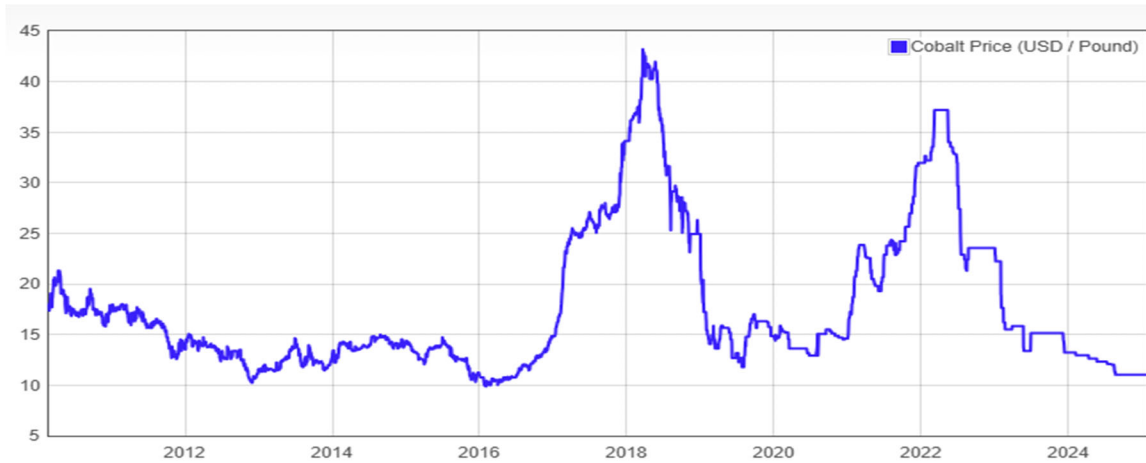
USGS Cobalt – U.S. Trade, Reported Stocks and Listed Prices

Cobalt - October 2024	Oct-24	Year to Date
U.S. Imports for Consumption - Metals (mt)	590	7,000
U.S. Exports of Cobalt Materials - Cobalt Content (mt)	370	3,770
Reported LME Stocks of Cobalt Metal (mt)	130	-
Listed Prices by Type (\$/lb): US Spot & LME Cash Avg.	15.90	10.88

Source: USGS, Mineral Industry Survey, Cobalt in October 2024, December 2024

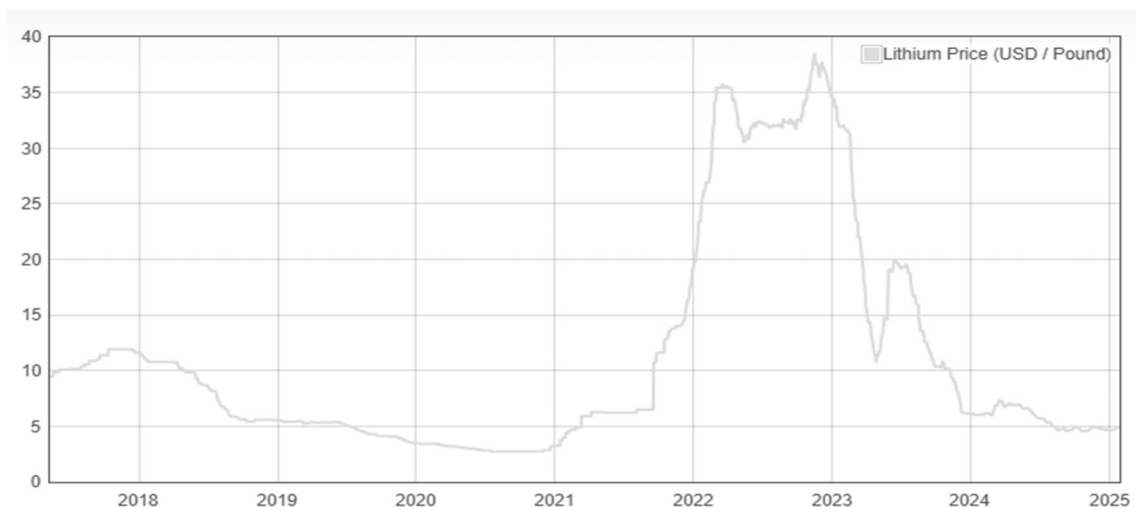
Cobalt and Lithium Prices

Cobalt Prices (US\$/pound):



Source: Dailymetalprice.com - <https://www.dailymetalprice.com/metalpricecharts.php?c=co&u=lb&d=0>

Lithium Prices (US\$/pound):



Source: Dailymetalprice.com - <https://www.dailymetalprice.com/metalpricecharts.php>