



# **NATIONAL MINING ASSOCIATION**

## **WEEKLY STATISTICAL SUMMARY**

**February 7, 2025 Edition**  
(Data for Week Ending February 1, 2025)

Prepared by  
**National Mining Association**

101 Constitution Avenue NW, Suite 500 East  
Washington, DC 20001  
(202) 463-2600  
[www.nma.org](http://www.nma.org)



# NMA WEEKLY STATISTICAL SUMMARY

Vol. 62, No. 5 | Dated 02/07/25

## COAL PRODUCTION, CONSUMPTION & TRADE

	Week Ended			* Cumulative Jan 1 to		
	2/01/25	2/03/24	% Chg	2/01/25	2/01/24	% Chg
EIA Coal Production (000 Tons):						
Week Ended/Year to Date	10,609	10,977	-3.4%	45,483	45,699	-0.5%
52 Weeks Ended	508,444	569,826	-10.8%			
AAR Coal Rail Cars Loaded:	59,863	62,779	-4.6%	255,944	262,773	-2.6%
EIA Coal Production Month Ended - December	<b>Dec 24/23</b> 43,183	<b>Dec 24/23</b> 45,711	<b>% Chg</b> -5.5%	<b>Jan - Dec 24/23</b> 511,733	<b>Jan - Dec 24/23</b> 577,954	<b>% Chg</b> -11.5%

### U.S. Department of Commerce Coal Trade (000 Tons)

	December 24/23		% Chg	Jan - Dec 24/23		% Chg
Coal Exports:						
Metallurgical	5,586	4,203	32.9%	56,856	51,292	10.8%
Steam Bit. *	3,649	4,185	-12.8%	49,981	47,686	4.8%
Lignite	3	12	-75.0%	143	99	44.4%
Anthracite	<u>59</u>	<u>85</u>	-30.6%	<u>737</u>	<u>775</u>	-4.9%
Total	9,297	8,485	9.6%	107,717	99,852	7.9%
Coal Imports:	127	233	-45.5%	1,998	4,010	-50.2%

	Week Ended			Cumulative Week 1 to		
	2/01/25	2/03/24	% Chg	2/01/25	2/03/24	% Chg
EI Electric Total Output (Mil. Kwh)	81,767	77,013	6.2%	435,069	413,584	5.2%
EI Coal Region Output (Mil. Kwh)	70,376	66,825	5.3%	379,159	358,891	5.6%
AISI Raw Steel Output (000 Tons)	1,656	1,643	0.8%	7,534	7,461	1.0%

## EIA AVERAGE COAL & NATURAL GAS SPOT PRICES

Dollars Per Short Ton

Average Coal Spot Prices (\$/Short Ton)	Week Ending			Natural Gas Spot Prices (\$/MMBtu)	
	01/31/25	01/24/25	% Chg	Wed.	01/29/25
Central App, 12,500 Btu, 1.2 SO <sub>2</sub>	\$76.50	\$76.50	0.0%	Henry Hub	3.29
Northern App, 13,000 Btu, < 3.0 SO <sub>2</sub>	51.00	51.00	0.0%	New York	3.57
Illinois Basin, 11,800, 5.0 SO <sub>2</sub>	44.50	44.50	0.0%	Chicago	2.99
Powder River Basin, 8,800 Btu 0.8 SO <sub>2</sub>	14.20	14.20	0.0%	Cal.Comp.Avg.	3.45

Coal exports and Imports are "as reported" (not revised); \*Steam bit. excludes lignite & anthracite. All data in this report are preliminary and subject to revision. r/ revised.

Sources: EIA; Edison Electric Institute; American Iron & Steel Institute; Association of American Railroads; Dept. of Commerce; S&P Global



<b>EIA Estimated Weekly U.S. Coal Production Overview</b>									
Coal-Producing Region & State (thousand short tons)	Week Ended			Year to Date			52 Weeks Ended		
	2/1/2025 (week 5)	1/25/2025 (week 4)	2/3/2024 (week 5)	2/1/2025	2/1/2024	% Change	2/1/2025	2/3/2024	% Change
Alabama	379	313	303	1,572	1,263	24.5	14,673	12,333	19.0
Alaska	23	19	25	97	106	-9.0	953	1,014	-6.0
Colorado	322	280	290	1,373	1,208	13.7	13,282	12,593	5.5
Illinois	811	713	823	3,471	3,425	1.3	36,018	36,930	-2.5
Indiana	424	368	464	1,805	1,930	-6.5	19,897	23,276	-14.5
<b>Kentucky total</b>	<b>524</b>	<b>463</b>	<b>557</b>	<b>2,247</b>	<b>2,320</b>	<b>-3.1</b>	<b>24,418</b>	<b>27,763</b>	<b>-12.0</b>
Eastern (KY)	213	191	228	921	949	-3.0	10,281	12,061	-14.8
Western (KY)	311	272	329	1,326	1,370	-3.2	14,137	15,702	-10.0
Louisiana	5	4	6	22	25	-11.0	255	286	-10.8
Maryland	30	26	29	126	122	3.2	1,290	1,285	0.4
Mississippi	34	38	23	164	95	72.0	2,173	2,561	-15.2
Missouri	4	3	3	15	13	17.9	156	140	11.4
Montana	557	488	545	2,386	2,268	5.2	27,035	28,848	-6.3
New Mexico	147	122	151	611	629	-2.8	7,087	7,849	-9.7
North Dakota	587	511	563	2,497	2,345	6.5	25,271	24,018	5.2
Ohio	38	34	41	162	169	-3.7	1,714	1,898	-9.7
Oklahoma	s	s	s	s	s	119.5	1	2	-50.0
<b>Pennsylvania total</b>	<b>880</b>	<b>771</b>	<b>845</b>	<b>3,767</b>	<b>3,519</b>	<b>7.0</b>	<b>40,845</b>	<b>42,383</b>	<b>-3.6</b>
Anthracite (PA)	75	62	66	313	274	14.2	3,138	2,960	6.0
Bituminous (PA)	805	709	780	3,454	3,246	6.4	37,706	39,423	-4.4
Texas	225	194	233	958	970	-1.2	11,621	13,445	-13.6
Utah	149	110	160	595	664	-10.5	6,772	6,851	-1.2
Virginia	195	178	197	847	820	3.3	9,449	10,331	-8.5
<b>West Virginia total</b>	<b>1,735</b>	<b>1,522</b>	<b>1,700</b>	<b>7,404</b>	<b>7,077</b>	<b>4.6</b>	<b>79,177</b>	<b>83,675</b>	<b>-5.4</b>
Northern (WV)	830	758	839	3,610	3,494	3.3	39,788	43,805	-9.2
Southern (WV)	905	763	861	3,794	3,583	5.9	39,389	39,870	-1.2
Wyoming	3,542	3,161	4,019	15,365	16,731	-8.2	186,358	232,345	-19.8
<b>Appalachian total</b>	<b>3,471</b>	<b>3,034</b>	<b>3,344</b>	<b>14,799</b>	<b>13,919</b>	<b>6.3</b>	<b>157,428</b>	<b>163,965</b>	<b>-4.0</b>
<b>Interior total</b>	<b>1,812</b>	<b>1,593</b>	<b>1,880</b>	<b>7,761</b>	<b>7,828</b>	<b>-0.9</b>	<b>84,258</b>	<b>92,343</b>	<b>-8.8</b>
<b>Western total</b>	<b>5,327</b>	<b>4,691</b>	<b>5,753</b>	<b>22,923</b>	<b>23,951</b>	<b>-4.3</b>	<b>266,758</b>	<b>313,519</b>	<b>-14.9</b>
<b>East of Mississippi River</b>	<b>5,049</b>	<b>4,426</b>	<b>4,982</b>	<b>21,565</b>	<b>20,740</b>	<b>4.0</b>	<b>229,653</b>	<b>242,435</b>	<b>-5.3</b>
<b>West of Mississippi River</b>	<b>5,560</b>	<b>4,892</b>	<b>5,995</b>	<b>23,918</b>	<b>24,959</b>	<b>-4.2</b>	<b>278,791</b>	<b>327,391</b>	<b>-14.8</b>
<b>Bituminous and lignite</b>	<b>10,534</b>	<b>9,256</b>	<b>10,911</b>	<b>45,171</b>	<b>45,425</b>	<b>-0.6</b>	<b>505,306</b>	<b>566,866</b>	<b>-10.9</b>
<b>Anthracite</b>	<b>75</b>	<b>62</b>	<b>66</b>	<b>313</b>	<b>274</b>	<b>14.2</b>	<b>3,138</b>	<b>2,960</b>	<b>6.0</b>
<b>U.S. total</b>	<b>10,609</b>	<b>9,318</b>	<b>10,977</b>	<b>45,483</b>	<b>45,699</b>	<b>-0.5</b>	<b>508,444</b>	<b>569,826</b>	<b>-10.8</b>
Railroad cars loaded	59,863	52,514	62,779	255,944	262,773	-2.6	2,933,922	3,376,417	-13.1

Source: Energy Information Administration



# Weekly Electric Output

Volume 93 No. 5

**OUTPUT FOR WEEK ENDED - Feb 01, 2025**

The net available amount of electric energy distributed by the Total Electric Utility Industry+ for the week ended Saturday, **Feb 01, 2025** was **81,767** gigawatthours (GWh), according to the Edison Electric Institute.

**WEEKLY ELECTRIC OUTPUT BY GEOGRAPHIC DIVISION**

(48 CONTIGUOUS STATES)

	Week Ended February 01		52 Weeks Ended February 01	
	GWh Output	% Increase Over Corresponding Week of 2024	GWh Output	% Increase Over Corresponding Week of 2024
New England	2,483	4.27 %	113,445	1.76 %
Mid-Atlantic	8,506	4.24 %	416,510	2.97 %
Central Industrial	13,483	3.64 %	655,245	2.56 %
West Central	6,496	5.31 %	333,993	-1.10 %
Southeast	20,030	1.32 %	1,044,222	2.99 %
South Central	15,774	10.01 %	900,247	3.19 %
Rocky Mountain	6,087	13.17 %	305,513	4.01 %
Pacific Northwest	3,879	24.37 %	160,094	0.41 %
Pacific Southwest	5,030	7.30 %	273,887	2.56 %
<b>Total United States</b>	<b>81,767</b>	<b>6.17 %</b>	<b>4,203,156</b>	<b>2.54 %</b>

**WEEKLY ELECTRIC OUTPUT IN PREVIOUS WEEKS--GWh**

Week Ended	2025	Week Ended	2024	% Inc. (25/24)	52 Weeks Ended	2025	% Inc. (25/24)
Jan 11	91,182	Jan 13	82,435	10.61 %	Jan 11	4,188,244	2.46 %
Jan 18	87,343	Jan 20	94,267	-7.35 %	Jan 18	4,181,320	1.86 %
Jan 25	97,259	Jan 27	80,177	21.30 %	Jan 25	4,198,401	2.25 %
Feb 01	81,767	Feb 03	77,013	6.17 %	Feb 01	4,203,156	2.54 %
<b>Feb 01</b>	<b>435,069</b>	<b>Feb 03</b>	<b>413,584</b>	<b>5.19 %</b>	<b>YEAR TO DATE, FIRST 5 WEEKS</b>		

## EEI WEEKLY ELECTRIC OUTPUT BY GEOGRAPHIC DIVISION (48 CONTIGUOUS STATES)

	Week Ended			NMA CUMULATIVE JANUARY WEEK ONE TO			52 Weeks Ended		
	1-Feb 2025 GWh Output	3-Feb 2024 GWh Output	% Increase Over Corresponding Week	1-Feb 2025 GWh Output	3-Feb 2024 GWh Output	% Increase Over Corresponding Week	1-Feb 2025 GWh Output	3-Feb 2024 GWh Output	% Increase Over Corresponding Week
<b>New England</b>	2,483	2,381	4.3%	<b>12,545</b>	<b>12,053</b>	<b>4.1%</b>	113,445	111,478	1.8%
<b>Mid-Atlantic</b>	8,506	8,160	4.2%	<b>44,605</b>	<b>42,027</b>	<b>6.1%</b>	416,510	404,484	3.0%
<b>Central Industrial</b>	13,483	13,010	3.6%	<b>70,279</b>	<b>67,996</b>	<b>3.4%</b>	655,245	638,883	2.6%
<b>West Central</b>	6,496	6,168	5.3%	<b>33,953</b>	<b>33,591</b>	<b>1.1%</b>	333,993	337,711	-1.1%
<b>Southeast</b>	20,030	19,770	1.3%	<b>112,735</b>	<b>104,410</b>	<b>8.0%</b>	1,044,222	1,013,898	3.0%
<b>South Central</b>	15,774	14,339	10.0%	<b>87,605</b>	<b>81,891</b>	<b>7.0%</b>	900,247	872,414	3.2%
<b>Rocky Mountain</b>	6,087	5,378	13.2%	<b>29,982</b>	<b>28,976</b>	<b>3.5%</b>	305,513	293,726	4.0%
<b>Pacific Northwest</b>	3,879	3,119	24.4%	<b>18,858</b>	<b>18,469</b>	<b>2.1%</b>	160,094	159,446	0.4%
<b>Pacific Southwest</b>	5,030	4,688	7.3%	<b>24,507</b>	<b>24,169</b>	<b>1.4%</b>	273,887	267,040	2.6%
<b>Total United States <sup>1/</sup></b>	<u>81,768</u>	<u>77,013</u>	6.2%	<u><b>435,069</b></u>	<u><b>413,582</b></u>	<b>5.2%</b>	4,203,156	4,099,080	2.5%
<b>Coal Regions Only <sup>2/</sup></b>	70,376	66,825	5.3%	<b>379,159</b>	<b>358,891</b>	<b>5.6%</b>	3,655,730	3,561,116	2.7%

**Notes:** EEI output data are an estimate of electricity load made available for distribution derived as weekly net generation + purchases from non-utilities + net imports - exports - sales for resale. It is not meant to be a measure of electricity generation for the U.S. EEI survey data represent the majority of national distribution (large utilities, large government power projects, some independent and large municipal power projects). The remaining segment of the industry (smaller producers) is estimated. Non-utility generation is captured via direct sales to utilities.

<sup>1/</sup> Excludes Alaska and Hawaii

<sup>2/</sup> Excludes New England and Pacific regions

SOURCE: Edison Electric Institute (EEI), *Weekly Electric Output Report*.

AMERICAN IRON AND STEEL INSTITUTE  
 25 Massachusetts Avenue, NW, Suite 800  
 Washington, D.C. 20001

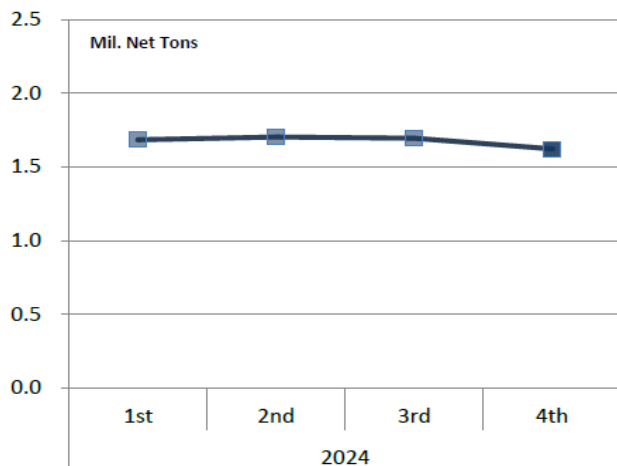
February 3, 2025

**ESTIMATED WEEKLY RAW STEEL \* PRODUCTION**

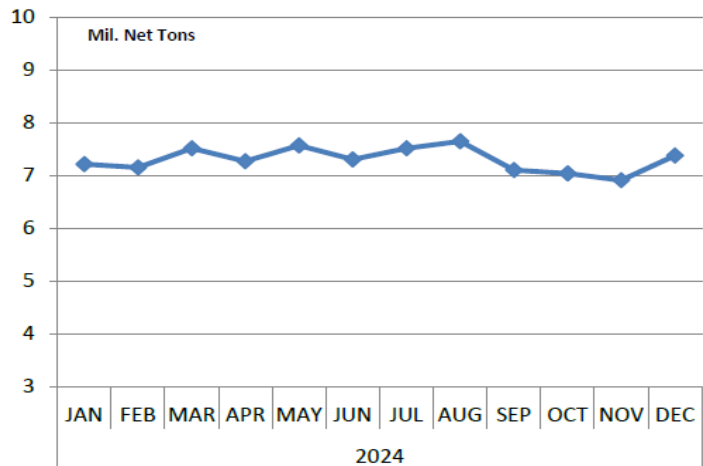
<u>Period</u>	<u>Thousand Net Tons</u>	<u>Percent Change from Previous Period</u>	<u>Percent Capability Utilization**</u>	<u>Production by District</u>		
				<u>Week Ending</u>		
				<u>Feb 1</u>	<u>Jan 25</u>	
<b><u>Week Ending</u></b>				North East	118	123
				Great Lakes	503	505
Feb 1, 2025	1,656	0.9	74.4	Midwest	233	245
Feb 1, 2024	1,643	0.8	73.9	Southern	745	703
Jan 25, 2025	1,641	-0.2	73.7	Western	57	65
				<b>Total</b>	<b>1,656</b>	<b>1,641</b>
<b><u>Year-to-Date +</u></b>						
Feb 1, 2025	7,534	1.0	74.0			
Feb 1, 2024	7,461	-	73.3			

\*Raw steel production tonnage included in this report is estimated based on a sampling of steel producers (50% of domestic producers). Therefore, this report should be used primarily to assess production trends. The AISI production report "AIS 7," produced monthly and available by subscription, provides a more accurate summary of steel production based on data supplied by companies representing approximately 75% of U.S. production capacity plus includes revisions for previous months.

**Average Weekly Raw Steel Production**



**Monthly Raw Steel Production**



\*Steel in the first solid state after melting suitable for further processing or sale, including ingots, steel for castings and strand or pressure cast blooms, slabs or other product forms. \*\* Based on tonnage capability to produce raw steel for a sustained full order book.

**U.S. Rail Traffic<sup>1</sup>**  
 Week 5, 2025 – Ended February 1, 2025

	This Week		Year-To-Date		
	Cars	vs 2024	Cumulative	Avg/wk <sup>2</sup>	vs 2024
<b>Total Carloads</b>	<b>222,071</b>	<b>-0.1%</b>	<b>1,025,664</b>	<b>205,133</b>	<b>0.2%</b>
Chemicals	33,374	4.2%	159,390	31,878	4.8%
Coal	59,863	-4.5%	280,303	56,061	-2.3%
Farm Products excl. Grain, and Food	17,197	0.0%	85,330	17,066	8.3%
Forest Products	8,271	-5.8%	40,901	8,180	2.2%
Grain	22,114	5.5%	104,180	20,836	6.1%
Metallic Ores and Metals	18,815	-3.3%	88,209	17,642	-9.1%
Motor Vehicles and Parts	15,686	1.5%	57,760	11,552	-6.7%
Nonmetallic Minerals	26,637	2.6%	115,614	23,123	-1.7%
Petroleum and Petroleum Products	11,192	6.4%	52,777	10,555	5.5%
Other	8,922	-2.1%	41,200	8,240	0.2%
<b>Total Intermodal Units</b>	<b>291,551</b>	<b>8.2%</b>	<b>1,329,715</b>	<b>265,943</b>	<b>10.3%</b>
<b>Total Traffic</b>	<b>513,622</b>	<b>4.5%</b>	<b>2,355,379</b>	<b>471,076</b>	<b>5.6%</b>

<sup>1</sup> Excludes U.S. operations of CPKC, CN and GMXT.

<sup>2</sup> Average per week figures may not sum to totals as a result of independent rounding.

Source: AAR website - <https://www.aar.org/Pages/NEWS-and-EVENTS.aspx>

**Copper, Gold and Silver Prices**

Copper Prices:

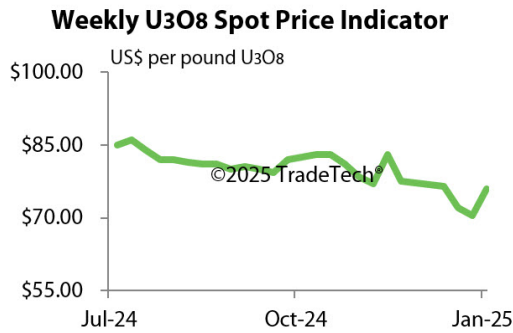


Gold and Silver Prices:



Source: Dailymetalprice.com - <https://www.dailymetalprice.com/metalprices.php>

### Trade Tech's and UX's Uranium Price Indicators



Sources: Trade Tech, Uranium Info Website – [www.uranium.info](http://www.uranium.info) ; Source: Ux Consulting Co., LLC – <http://www.uxc.com>

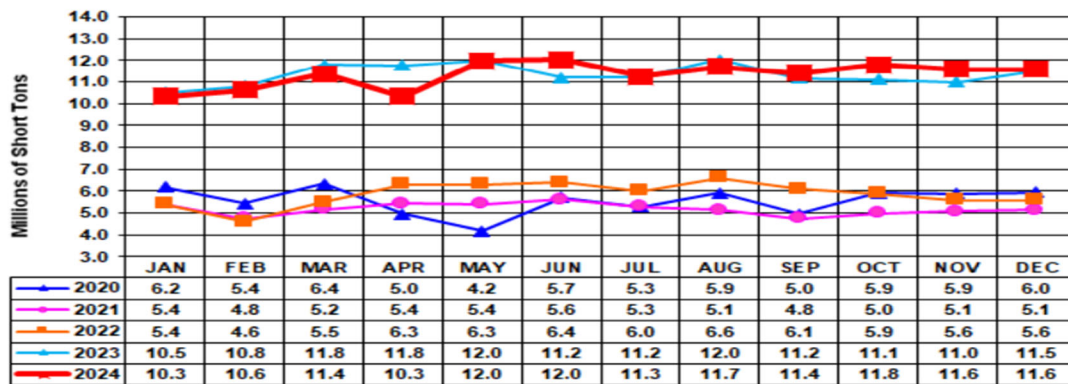
### Coal stocks and average number of days of burn for non-lignite coal by region (electric power sector)

Zone	Coal	November 2024		November 2023		% Change of Stocks	October 2024		% Change of Stocks
		Stocks (1000 tons)	Days of Burn	Stocks (1000 tons)	Days of Burn		Stocks (1000 tons)	Days of Burn	
Northeast	Bituminous	2,127	166	2,442	251	-12.9%	2,150	174	-1.1%
	Subbituminous	-	-	-	-	-	-	-	-
South	Bituminous	20,805	151	22,615	165	-8.0%	20,339	143	2.3%
	Subbituminous	6,284	102	6,598	113	-4.8%	5,962	96	5.4%
Midwest	Bituminous	12,472	145	13,260	148	-5.9%	11,869	131	5.1%
	Subbituminous	33,699	154	33,303	179	1.2%	33,706	146	-0.0%
West	Bituminous	3,145	221	2,755	190	14.2%	3,292	228	-4.5%
	Subbituminous	31,176	172	31,390	183	-0.7%	30,183	158	3.3%
U.S. Total	Bituminous	38,549	154	41,073	164	-6.1%	37,649	144	2.4%
	Subbituminous	71,158	155	71,291	173	-0.2%	69,852	143	1.9%

Source: U.S. Energy Information Administration

Source: Energy Information Administration, Electric Monthly Update

### Coal and Coke Monthly Indicator for Internal U.S. Waterways



For the Internal U.S. Waterway Monthly Indicators, estimates for the most recent month are based on lock performance management data. The estimates will be superseded by actual data as it becomes available.

Source: Waterborne Commerce Statistics Center

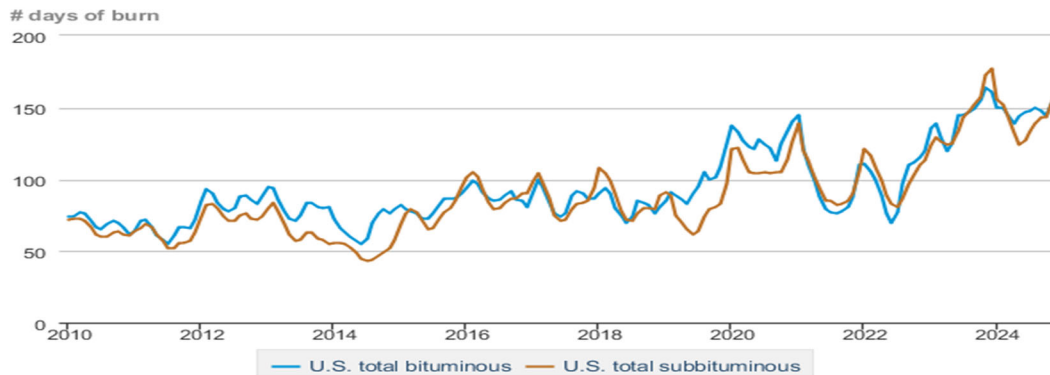
### Average weekly coal commodity spot prices dollars per short ton

	Week ending					Week ago change
	01/03/25	01/10/25	01/17/25	01/24/25	01/31/25	
Central Appalachia 12,500 Btu, 1.2 SO <sub>2</sub>	\$75.00	\$77.30	\$77.30	\$76.50	\$76.50	\$0.00
Northern Appalachia 13,000 Btu, < 3.0 SO <sub>2</sub>	\$49.00	\$50.50	\$50.50	\$51.00	\$51.00	\$0.00
Illinois Basin 11,800 Btu, 5.0 SO <sub>2</sub>	\$44.00	\$44.00	\$44.00	\$44.50	\$44.50	\$0.00
Powder River Basin 8,800 Btu, 0.8 SO <sub>2</sub>	\$14.20	\$14.15	\$14.15	\$14.20	\$14.20	\$0.00

Data source: With permission, S&P Global

Source: Energy Information Administration (with permission from S&P Global), *Coal Market Report*

### Days of burn by non-lignite coal rank, January 2010 - November 2024



eia Data source: U.S. Energy Information Administration

Source: Energy Information Administration, *Electricity Monthly Update Report*

### Temperature – heating & cooling degree days (week ending Jan 23)

Region	HDDs			CDDs		
	Current total	Deviation from normal	Deviation from last year	Current total	Deviation from normal	Deviation from last year
New England	313	38	9	0	0	0
Middle Atlantic	304	41	11	0	0	0
E N Central	349	53	9	0	0	0
W N Central	372	57	4	0	0	0
South Atlantic	242	59	0	2	-6	1
E S Central	258	70	-18	0	-2	0
W S Central	207	69	10	0	-4	0
Mountain	280	50	69	0	0	0
Pacific	122	4	12	0	-1	0
United States	270	45	12	0	-2	0

Data source: National Oceanic and Atmospheric Administration  
Note: HDDs=heating degree days; CDDs=cooling degree days

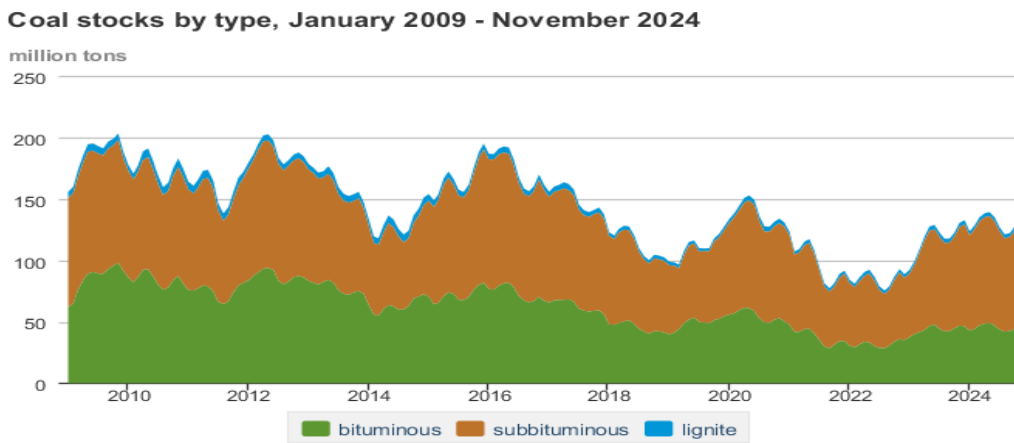
Source: Energy Information Administration, *Natural Gas Weekly Update*.

U.S. Production of Selected Mineral Commodities	2024 Year to Date - 3rd Quarter	2023 Year to Date - 3rd Quarter	Percent Change
Aluminum, secondary (000 Mt.)	670.0	686.0	-2%
Cement (Mil. Mt.)	62.5	66.9	-7%
Copper (000 Mt.)	777.0	835.0	-7%
Gold (Mt.)	118.0	124.0	-5%
Gypsum (Mil. Mt.)	14.2	14.0	1%
Iron Ore (Mil. Mt.)	34.6	32.9	5%
Lead (000 Mt.)	217.0	200.0	9%
Molybdenum (000 Mt.)	25.1	25.0	0%
Palladium (Mt.)	8.4	7.5	12%
Phosphate rock (Mil. Mt.)	14.9	14.9	0%
Platinum (Mt.)	2.5	2.2	14%
Sand & gravel, construction (Mil. Mt.)	684.0	731.0	-6%
Silver (Mt.)	771.0	764.0	1%
Soda ash (Mil. Mt.)	8.7	8.1	7%
Stone, crushed (Mil. Mt.)	1,110.0	1,170.0	-5%
Zinc (000 Mt.)	564.0	544.0	4%

Source: U.S. Geological Survey, Mineral Industry Surveys. Percent change based on USGS rounded numbers. 2024 data are preliminary estimates. W - withheld, N/A - not available



Source: Energy Information Administration, *Natural Gas Weekly*.



Source: U.S. Energy Information Administration

Source: Energy Information Administration, *Electricity Monthly Update*

### Mining-Related Commodity Prices

Commodity Price - Snapshot		
Metals Prices	Date	Price
Cobalt Spot Price (\$/lb)	2/3/25	\$9.77
Copper Spot Price (\$/lb)	2/4/25	\$4.34
Gold Spot Price (\$/ounce)	2/4/25	\$2,842.71
Lead Spot Price (\$/lb)	2/4/25	\$0.89
Lithium Spot Price (\$/kg)	1/27/25	\$10.73
Molybdenum Spot Price (\$/kg)	1/27/25	\$64.73
Nickel Spot Price (\$/lb)	2/4/25	\$6.93
Silver Spot Price (\$/ounce)	2/4/25	\$32.28
Steel HRC Price (\$/mt)	2/4/25	\$734.34
Steel Rebar Price (\$/mt)	1/27/25	\$456.34
Zinc Spot Price (\$/lb)	2/4/25	\$1.27
Energy Prices	Date	Price
Coal Price - Australian Premium Coking Coal Futures (\$/mt)	2/4/25	\$192.50
Coal Spot Price - Central Appalachian (\$/st)	1/31/25	\$76.50
Coal Spot Price - Newcastle futures (\$/mt)	2/4/25	\$112.53
Coal Spot Price - Rotterdam futures (\$/mt)	2/4/25	\$105.50
Natural Gas Spot Price - Henry Hub (\$/mmbtu)	1/31/25	\$3.29
Uranium Spot Price (\$/lb)	2/3/25	\$72.80

Sources: publically available data from eia.gov, dailymetalprice.com, tradingeconomics.com, sgxgroup.com, investing.com

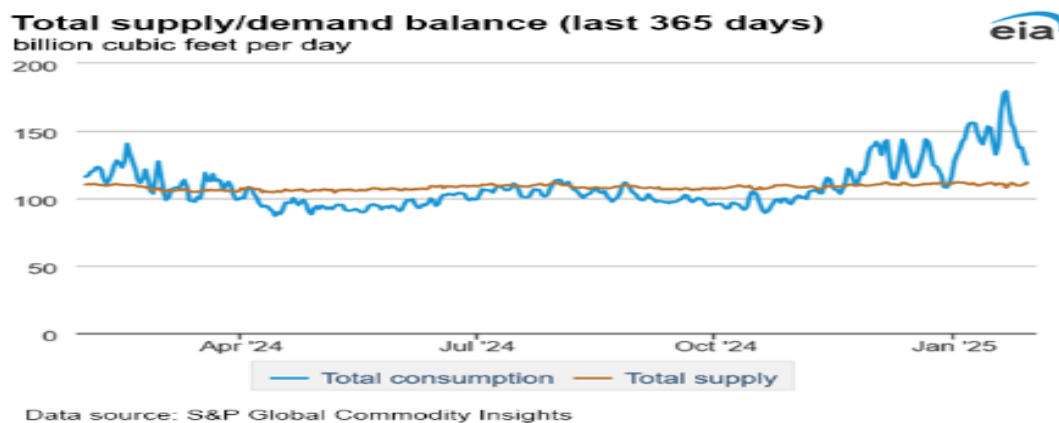
### EIA Working Natural Gas Underground Storage

Region	Stocks billion cubic feet (Bcf)		
	2025-01-24	2025-01-17	change
East	552	613	-61
Midwest	661	744	-83
Mountain	212	229	-17
Pacific	246	269	-23
South Central	901	1,037	-136
Total	2,571	2,892	-321

Data source: U.S. Energy Information Administration Form EIA-912, *Weekly Underground Natural Gas Storage Report*

Note: Totals may not equal sum of components because of independent rounding.

Source: Energy Information Administration, *Natural Gas Weekly Update*



Source: Energy Information Administration, *Natural Gas Weekly Update*

### USGS Cobalt – U.S. Trade, Reported Stocks and Listed Prices

Cobalt - November 2024	Nov-24	Year to Date
U.S. Imports for Consumption - Metals (mt)	930	7,930
U.S. Exports of Cobalt Materials - Cobalt Content (mt)	471	4,310
Reported LME Stocks of Cobalt Metal (mt)	128	-
Listed Prices by Type (\$/lb): US Spot & LME Cash Avg.	15.68	10.91

Source: USGS, Mineral Industry Survey, Cobalt in November 2024, February 2025

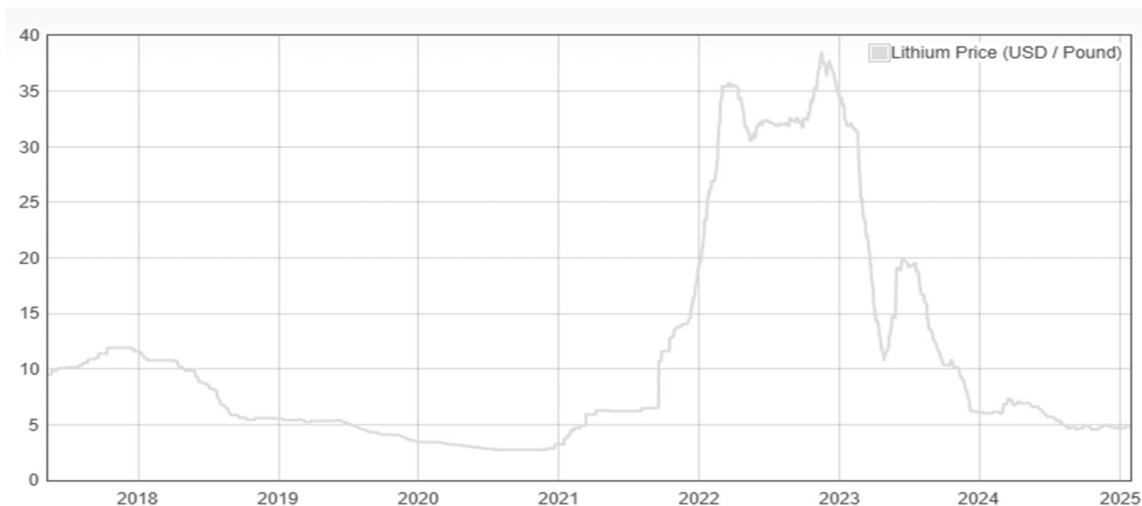
### Cobalt and Lithium Prices

#### Cobalt Prices (US\$/pound):



Source: Dailymetalprice.com - <https://www.dailymetalprice.com/metalpricecharts.php?c=co&u=lb&d=0>

#### Lithium Prices (US\$/pound):



Source: Dailymetalprice.com - <https://www.dailymetalprice.com/metalpricecharts.php>