



NATIONAL MINING ASSOCIATION

WEEKLY STATISTICAL SUMMARY

February 14, 2025 Edition
(Data for Week Ending February 8, 2025)

Prepared by
National Mining Association

101 Constitution Avenue NW, Suite 500 East
Washington, DC 20001
(202) 463-2600
www.nma.org



NMA WEEKLY STATISTICAL SUMMARY

Vol. 62, No. 6 | Dated 02/14/25

COAL PRODUCTION, CONSUMPTION & TRADE

	Week Ended			* Cumulative Jan 1 to		
	2/08/25	2/10/24	% Chg	2/08/25	2/08/24	% Chg
EIA Coal Production (000 Tons):						
Week Ended/Year to Date	10,030	10,825	-7.3%	55,513	56,566	-1.9%
52 Weeks Ended	507,650	568,695	-10.7%			
AAR Coal Rail Cars Loaded:	56,636	61,908	-8.5%	312,580	324,930	-3.8%
EIA Coal Production						
Month Ended - January	Jan 25/24		% Chg	Jan - Jan 25/24		% Chg
	44,104	44,052	0.1%	44,104	44,052	0.1%

U.S. Department of Commerce Coal Trade (000 Tons)

	December 24/23		% Chg	Jan - Dec 24/23		% Chg
Coal Exports:						
Metallurgical	5,586	4,203	32.9%	56,856	51,292	10.8%
Steam Bit. *	3,649	4,185	-12.8%	49,981	47,686	4.8%
Lignite	3	12	-75.0%	143	99	44.4%
Anthracite	59	85	-30.6%	737	775	-4.9%
Total	9,297	8,485	9.6%	107,717	99,852	7.9%
Coal Imports:	127	233	-45.5%	1,998	4,010	-50.2%

	Week Ended			Cumulative Week 1 to		
	2/08/25	2/10/24	% Chg	2/08/25	2/10/24	% Chg
EEI Electric Total Output (Mil. Kwh)	79,239	75,587	4.8%	514,308	489,171	5.1%
EEI Coal Region Output (Mil. Kwh)	67,715	65,057	4.1%	446,874	423,948	5.4%
AISI Raw Steel Output (000 Tons)	1,675	1,726	-3.0%	9,209	9,186	0.3%

EIA AVERAGE COAL & NATURAL GAS SPOT PRICES

Dollars Per Short Ton

Average Coal Spot Prices (\$/Short Ton)	Week Ending			Natural Gas Spot Prices (\$/MMBtu)	
	02/07/25	01/31/25	% Chg	Wed.	02/05/25
Central App, 12,500 Btu, 1.2 SO ₂	\$76.50	\$76.50	0.0%	Henry Hub	3.22
Northern App, 13,000 Btu, < 3.0 SO ₂	50.00	51.00	-2.0%	New York	3.81
Illinois Basin, 11,800, 5.0 SO ₂	44.50	44.50	0.0%	Chicago	3.12
Powder River Basin, 8,800 Btu 0.8 SO ₂	14.20	14.20	0.0%	Cal.Comp.Avg.	3.37

Coal exports and Imports are "as reported" (not revised); *Steam bit. excludes lignite & anthracite. All data in this report are preliminary and subject to revision. r/ revised.

Sources: EIA; Edison Electric Institute; American Iron & Steel Institute; Association of American Railroads; Dept. of Commerce; S&P Global



EIA Estimated Weekly U.S. Coal Production Overview									
Coal-Producing Region & State (thousand short tons)	Week Ended			Year to Date			52 Weeks Ended		
	2/8/2025 (week 6)	2/1/2025 (week 5)	2/10/2024 (week 6)	2/8/2025	2/8/2024	% Change	2/8/2025	2/10/2024	% Change
Alabama	338	379	299	1,910	1,563	22.2	14,712	12,409	18.6
Alaska	21	23	25	118	131	-10.4	949	1,016	-6.6
Colorado	302	322	286	1,676	1,495	12.1	13,298	12,655	5.1
Illinois	760	811	811	4,231	4,240	-0.2	35,967	36,953	-2.7
Indiana	395	424	457	2,201	2,389	-7.9	19,835	23,194	-14.5
Kentucky total	491	524	549	2,738	2,871	-4.6	24,360	27,698	-12.1
Eastern (KY)	202	213	225	1,122	1,175	-4.5	10,258	12,027	-14.7
Western (KY)	289	311	325	1,616	1,696	-4.8	14,102	15,671	-10.0
Louisiana	5	5	6	27	31	-12.5	254	285	-10.9
Maryland	27	30	29	154	151	1.5	1,288	1,289	-0.1
Mississippi	37	34	23	201	118	70.5	2,187	2,537	-13.8
Missouri	3	4	3	19	16	15.8	157	140	12.1
Montana	527	557	537	2,913	2,807	3.8	27,025	28,830	-6.3
New Mexico	131	147	149	742	778	-4.6	7,069	7,828	-9.7
North Dakota	544	587	556	3,040	2,903	4.7	25,259	24,033	5.1
Ohio	35	38	40	198	209	-5.4	1,709	1,889	-9.5
Oklahoma	s	s	s	s	s	122.0	1	2	-50.0
Pennsylvania total	829	880	834	4,596	4,356	5.5	40,840	42,357	-3.6
Anthracite (PA)	68	75	65	380	339	12.2	3,141	2,973	5.7
Bituminous (PA)	762	805	769	4,216	4,017	4.9	37,699	39,384	-4.3
Texas	213	225	230	1,171	1,200	-2.4	11,605	13,380	-13.3
Utah	131	149	157	726	822	-11.7	6,746	6,845	-1.4
Virginia	185	195	194	1,032	1,015	1.6	9,439	10,280	-8.2
West Virginia total	1,610	1,735	1,676	9,014	8,760	2.9	79,111	83,552	-5.3
Northern (WV)	788	830	828	4,398	4,325	1.7	39,749	43,680	-9.0
Southern (WV)	822	905	849	4,616	4,436	4.1	39,363	39,872	-1.3
Wyoming	3,443	3,542	3,963	18,808	20,710	-9.2	185,838	231,524	-19.7
Appalachian total	3,227	3,471	3,297	18,026	17,230	4.6	157,358	163,803	-3.9
Interior total	1,704	1,812	1,854	9,464	9,690	-2.3	84,107	92,162	-8.7
Western total	5,100	5,327	5,673	28,023	29,647	-5.5	266,185	312,731	-14.9
East of Mississippi River	4,709	5,049	4,913	26,273	25,672	2.3	229,449	242,157	-5.2
West of Mississippi River	5,321	5,560	5,912	29,240	30,894	-5.4	278,201	326,538	-14.8
Bituminous and lignite	9,963	10,534	10,760	55,133	56,227	-1.9	504,509	565,722	-10.8
Anthracite	68	75	65	380	339	12.2	3,141	2,973	5.7
U.S. total	10,030	10,609	10,825	55,513	56,566	-1.9	507,650	568,695	-10.7
Railroad cars loaded	56,636	59,863	61,908	312,580	324,930	-3.8	2,928,650	3,369,280	-13.1

Source: Energy Information Administration



Weekly Electric Output

Volume 93 No. 6

OUTPUT FOR WEEK ENDED - Feb 08, 2025

The net available amount of electric energy distributed by the Total Electric Utility Industry+ for the week ended Saturday, **Feb 08, 2025** was **79,239** gigawatthours (GWh), according to the Edison Electric Institute.

WEEKLY ELECTRIC OUTPUT BY GEOGRAPHIC DIVISION

(48 CONTIGUOUS STATES)

	Week Ended February 08		52 Weeks Ended February 08	
	GWh Output	% Increase Over Corresponding Week of 2024	GWh Output	% Increase Over Corresponding Week of 2024
New England	2,513	14.41 %	113,761	2.08 %
Mid-Atlantic	8,649	10.41 %	417,326	3.18 %
Central Industrial	13,259	8.76 %	656,313	2.76 %
West Central	6,600	5.18 %	334,318	-0.91 %
Southeast	18,472	-3.95 %	1,043,463	2.84 %
South Central	15,438	9.50 %	901,586	3.37 %
Rocky Mountain	5,297	-2.39 %	305,383	3.91 %
Pacific Northwest	4,047	18.35 %	160,722	0.79 %
Pacific Southwest	4,964	1.02 %	273,937	2.50 %
Total United States	79,239	4.83 %	4,206,808	2.62 %

WEEKLY ELECTRIC OUTPUT IN PREVIOUS WEEKS--GWh

Week Ended	2025	Week Ended	2024	% Inc. (25/24)	52 Weeks Ended	2025	% Inc. (25/24)
Jan 18	87,343	Jan 20	94,267	-7.35 %	Jan 18	4,181,320	1.86 %
Jan 25	97,259	Jan 27	80,177	21.30 %	Jan 25	4,198,401	2.25 %
Feb 01	81,767	Feb 03	77,013	6.17 %	Feb 01	4,203,156	2.54 %
Feb 08	79,239	Feb 10	75,587	4.83 %	Feb 08	4,206,808	2.62 %
Feb 08	514,308	Feb 10	489,171	5.14 %	YEAR TO DATE, FIRST 6 WEEKS		

**EI WEEKLY ELECTRIC OUTPUT BY GEOGRAPHIC DIVISION
(48 CONTIGUOUS STATES)**

	Week Ended			NMA CUMULATIVE JANUARY WEEK ONE TO			52 Weeks Ended		
	8-Feb 2025 GWh Output	10-Feb 2024 GWh Output	% Increase Over Corresponding Week	8-Feb 2025 GWh Output	10-Feb 2024 GWh Output	% Increase Over Corresponding Week	8-Feb 2025 GWh Output	10-Feb 2024 GWh Output	% Increase Over Corresponding Week
New England	2,513	2,197	14.4%	15,058	14,250	5.7%	113,761	111,436	2.1%
Mid-Atlantic	8,649	7,833	10.4%	53,254	49,860	6.8%	417,326	404,462	3.2%
Central Industrial	13,259	12,191	8.8%	83,538	80,187	4.2%	656,313	638,657	2.8%
West Central	6,600	6,275	5.2%	40,553	39,866	1.7%	334,318	337,375	-0.9%
Southeast	18,472	19,232	-4.0%	131,207	123,642	6.1%	1,043,463	1,014,654	2.8%
South Central	15,438	14,099	9.5%	103,043	95,990	7.3%	901,586	872,165	3.4%
Rocky Mountain	5,297	5,427	-2.4%	35,279	34,403	2.5%	305,383	293,879	3.9%
Pacific Northwest	4,047	3,420	18.3%	22,905	21,889	4.6%	160,722	159,467	0.8%
Pacific Southwest	4,964	4,913	1.0%	29,471	29,082	1.3%	273,937	267,253	2.5%
Total United States ^{1/}	79,239	75,587	4.8%	514,308	489,169	5.1%	4,206,809	4,099,348	2.6%
Coal Regions Only ^{2/}	67,715	65,057	4.1%	446,874	423,948	5.4%	3,658,389	3,561,192	2.7%

Notes: EEI output data are an estimate of electricity load made available for distribution derived as weekly net generation + purchases from non-utilities + net imports - exports - sales for resale. It is not meant to be a measure of electricity generation for the U.S. EEI survey data represent the majority of national distribution (large utilities, large government power projects, some independent and large municipal power projects). The remaining segment of the industry (smaller producers) is estimated. Non-utility generation is captured via direct sales to utilities.

^{1/} Excludes Alaska and Hawaii

^{2/} Excludes New England and Pacific regions

SOURCE: Edison Electric Institute (EEI), *Weekly Electric Output Report*.

AMERICAN IRON AND STEEL INSTITUTE
 25 Massachusetts Avenue, NW, Suite 800
 Washington, D.C. 20001

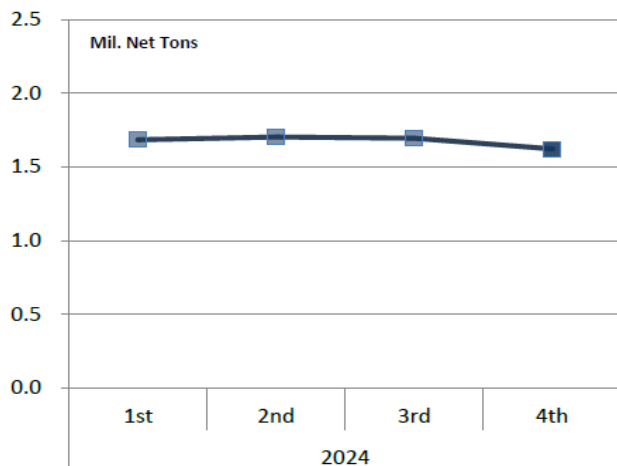
February 10, 2025

ESTIMATED WEEKLY RAW STEEL * PRODUCTION

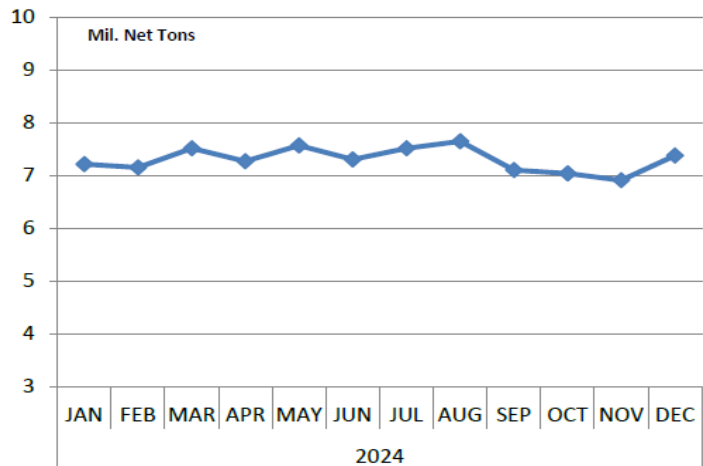
<u>Period</u>	<u>Thousand Net Tons</u>	<u>Percent Change from Previous Period</u>	<u>Percent Capability Utilization**</u>	<u>Production by District</u>		
				<u>Week Ending</u>		
				<u>Feb 8</u>	<u>Feb 1</u>	
<u>Week Ending</u>				North East	120	118
				Great Lakes	496	503
Feb 8, 2025	1,675	1.1	75.2	Midwest	250	233
Feb 8, 2024	1,726	-3.0	77.7	Southern	747	745
Feb 1, 2025	1,656	0.9	74.4	Western	62	57
				Total	1,675	1,656
<u>Year-to-Date +</u>						
Feb 8, 2025	9,209	0.3	74.2			
Feb 8, 2024	9,186	-	75.4			

*Raw steel production tonnage included in this report is estimated based on a sampling of steel producers (50% of domestic producers). Therefore, this report should be used primarily to assess production trends. The AISI production report "AIS 7," produced monthly and available by subscription, provides a more accurate summary of steel production based on data supplied by companies representing approximately 75% of U.S. production capacity plus includes revisions for previous months.

Average Weekly Raw Steel Production



Monthly Raw Steel Production



*Steel in the first solid state after melting suitable for further processing or sale, including ingots, steel for castings and strand or pressure cast blooms, slabs or other product forms. ** Based on tonnage capability to produce raw steel for a sustained full order book.

U.S. Rail Traffic¹
Week 6, 2025 – Ended February 8, 2025

	This Week		Year-To-Date		
	Cars	vs 2024	Cumulative	Avg/wk ²	vs 2024
Total Carloads	218,393	-0.7%	1,244,057	207,343	0.0%
Chemicals	34,390	3.8%	193,780	32,297	4.6%
Coal	56,636	-7.7%	336,939	56,157	-3.2%
Farm Products excl. Grain, and Food	17,921	2.7%	103,251	17,209	7.3%
Forest Products	8,329	1.5%	49,230	8,205	2.1%
Grain	21,764	1.0%	125,944	20,991	5.2%
Metallic Ores and Metals	16,917	-8.3%	105,126	17,521	-9.0%
Motor Vehicles and Parts	15,602	3.8%	73,362	12,227	-4.6%
Nonmetallic Minerals	27,904	4.8%	143,518	23,920	-0.5%
Petroleum and Petroleum Products	9,927	0.2%	62,704	10,451	4.6%
Other	9,003	10.5%	50,203	8,367	1.9%
Total Intermodal Units	284,056	7.4%	1,613,771	268,962	9.7%
Total Traffic	502,449	3.7%	2,857,828	476,305	5.3%

¹ Excludes U.S. operations of CPKC, CN and GMXT.

² Average per week figures may not sum to totals as a result of independent rounding.

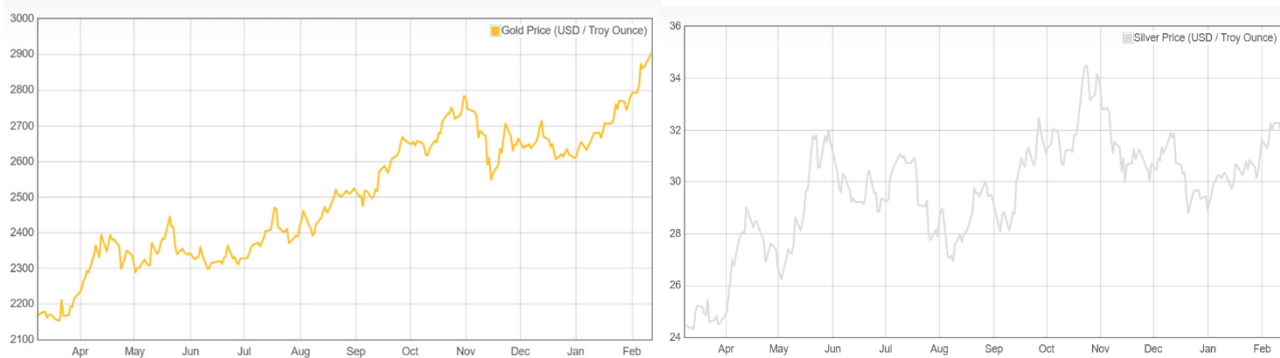
Source: AAR website - <https://www.aar.org/Pages/NEWS-and-EVENTS.aspx>

Copper, Gold and Silver Prices

Copper Prices:

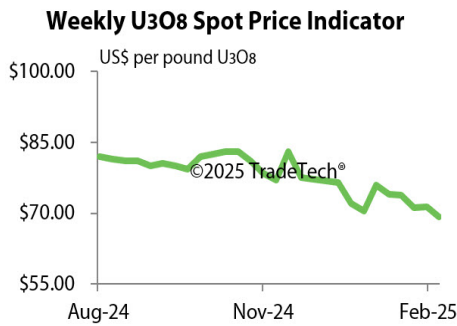


Gold and Silver Prices:



Source: Dailymetalprice.com - <https://www.dailymetalprice.com/metalprices.php>

Trade Tech's and UX's Uranium Price Indicators



Sources: Trade Tech, Uranium Info Website – www.uranium.info ; Source: Ux Consulting Co., LLC – <http://www.uxc.com>

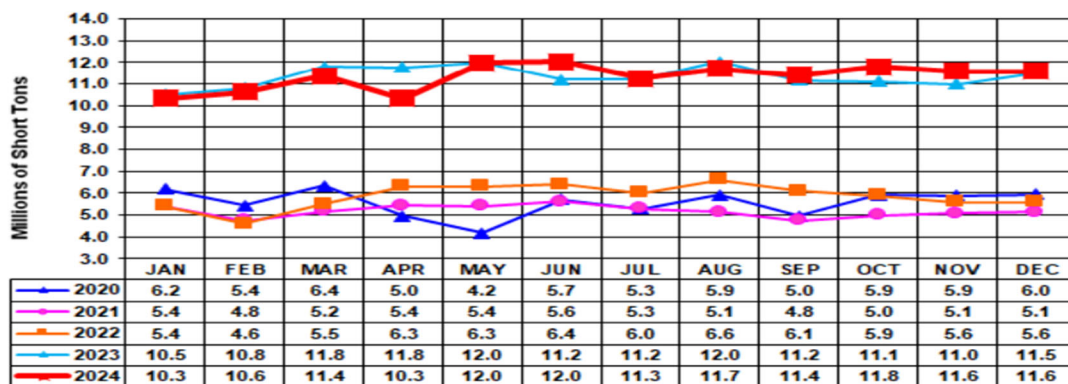
Coal stocks and average number of days of burn for non-lignite coal by region (electric power sector)

Zone	Coal	November 2024		November 2023		% Change of Stocks	October 2024		% Change of Stocks
		Stocks (1000 tons)	Days of Burn	Stocks (1000 tons)	Days of Burn		Stocks (1000 tons)	Days of Burn	
Northeast	Bituminous	2,127	166	2,442	251	-12.9%	2,150	174	-1.1%
	Subbituminous	-	-	-	-	-	-	-	-
South	Bituminous	20,805	151	22,615	165	-8.0%	20,339	143	2.3%
	Subbituminous	6,284	102	6,598	113	-4.8%	5,962	96	5.4%
Midwest	Bituminous	12,472	145	13,260	148	-5.9%	11,869	131	5.1%
	Subbituminous	33,699	154	33,303	179	1.2%	33,706	146	-0.0%
West	Bituminous	3,145	221	2,755	190	14.2%	3,292	228	-4.5%
	Subbituminous	31,176	172	31,390	183	-0.7%	30,183	158	3.3%
U.S. Total	Bituminous	38,549	154	41,073	164	-6.1%	37,649	144	2.4%
	Subbituminous	71,158	155	71,291	173	-0.2%	69,852	143	1.9%

Source: U.S. Energy Information Administration

Source: Energy Information Administration, Electric Monthly Update

Coal and Coke Monthly Indicator for Internal U.S. Waterways



For the Internal U.S. Waterway Monthly Indicators, estimates for the most recent month are based on lock performance management data. The estimates will be superseded by actual data as it becomes available.

Source: Waterborne Commerce Statistics Center

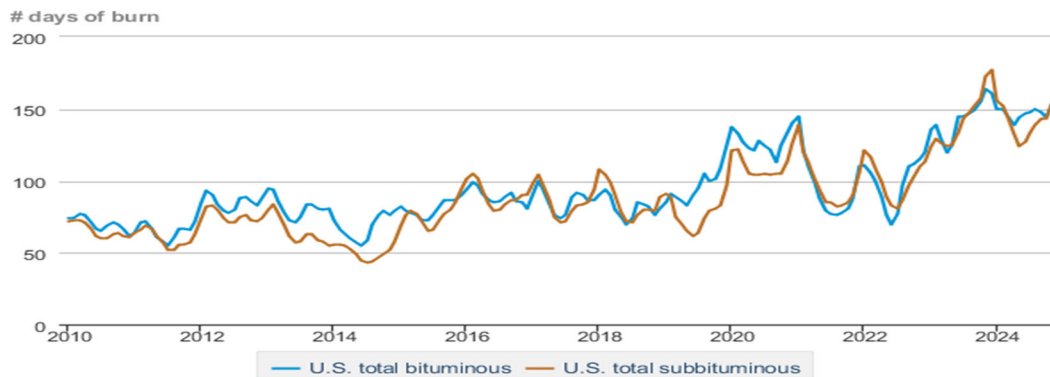
Average weekly coal commodity spot prices dollars per short ton

	Week ending					Week ago change
	01/10/25	01/17/25	01/24/25	01/31/25	02/07/25	
Central Appalachia 12,500 Btu, 1.2 SO ₂	\$77.30	\$77.30	\$76.50	\$76.50	\$76.50	\$0.00
Northern Appalachia 13,000 Btu, < 3.0 SO ₂	\$50.50	\$50.50	\$51.00	\$51.00	\$50.00	-\$1.00
Illinois Basin 11,800 Btu, 5.0 SO ₂	\$44.00	\$44.00	\$44.50	\$44.50	\$44.50	\$0.00
Powder River Basin 8,800 Btu, 0.8 SO ₂	\$14.15	\$14.15	\$14.20	\$14.20	\$14.20	\$0.00

Data source: With permission, S&P Global

Source: Energy Information Administration (with permission from S&P Global), *Coal Market Report*

Days of burn by non-lignite coal rank, January 2010 - November 2024



 Data source: U.S. Energy Information Administration

Source: Energy Information Administration, *Electricity Monthly Update Report*

Temperature – heating & cooling degree days (week ending Jan 30)

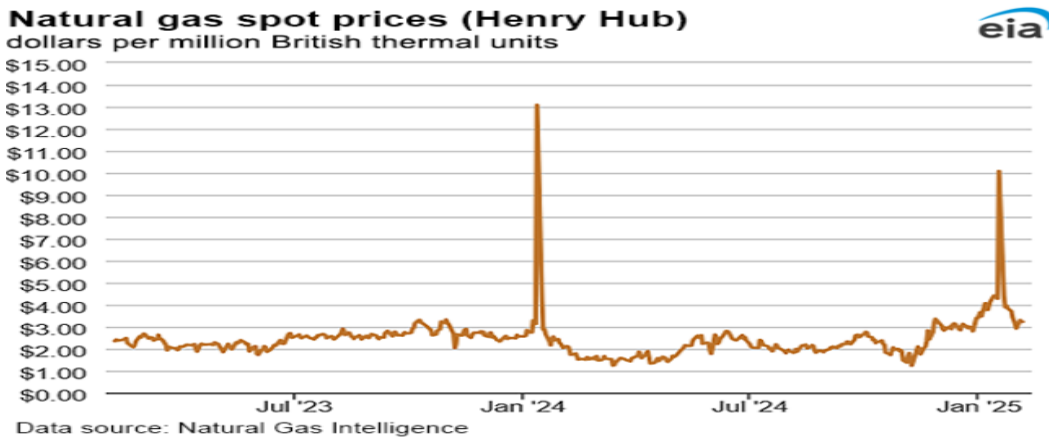
Region	HDDs			CDDs		
	Current total	Deviation from normal	Deviation from last year	Current total	Deviation from normal	Deviation from last year
New England	281	6	71	0	0	0
Middle Atlantic	267	4	65	0	0	0
E N Central	269	-24	67	0	0	0
W N Central	257	-52	48	0	0	0
South Atlantic	182	2	84	2	-6	-6
E S Central	181	-3	73	0	-1	0
W S Central	124	-10	32	1	-3	0
Mountain	245	20	66	0	-1	0
Pacific	140	25	65	0	-1	0
United States	217	-4	63	0	-2	-1

Data source: National Oceanic and Atmospheric Administration
Note: HDDs=heating degree days; CDDs=cooling degree days

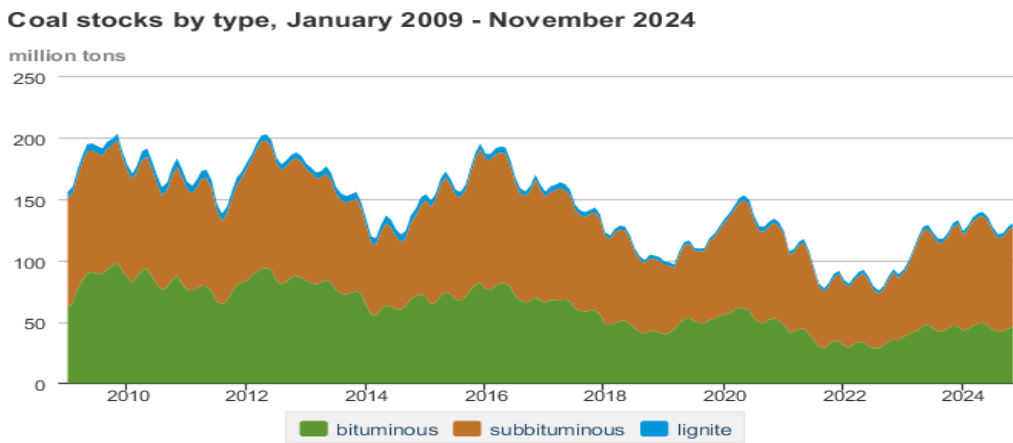
Source: Energy Information Administration, *Natural Gas Weekly Update*.

U.S. Production of Selected Mineral Commodities	2024 Year to Date - 3rd Quarter	2023 Year to Date - 3rd Quarter	Percent Change
Aluminum, secondary (000 Mt.)	670.0	686.0	-2%
Cement (Mil. Mt.)	62.5	66.9	-7%
Copper (000 Mt.)	777.0	835.0	-7%
Gold (Mt.)	118.0	124.0	-5%
Gypsum (Mil. Mt.)	14.2	14.0	1%
Iron Ore (Mil. Mt.)	34.6	32.9	5%
Lead (000 Mt.)	217.0	200.0	9%
Molybdenum (000 Mt.)	25.1	25.0	0%
Palladium (Mt.)	8.4	7.5	12%
Phosphate rock (Mil. Mt.)	14.9	14.9	0%
Platinum (Mt.)	2.5	2.2	14%
Sand & gravel, construction (Mil. Mt.)	684.0	731.0	-6%
Silver (Mt.)	771.0	764.0	1%
Soda ash (Mil. Mt.)	8.7	8.1	7%
Stone, crushed (Mil. Mt.)	1,110.0	1,170.0	-5%
Zinc (000 Mt.)	564.0	544.0	4%

Source: U.S. Geological Survey, Mineral Industry Surveys. Percent change based on USGS rounded numbers. 2024 data are preliminary estimates. W - withheld, N/A - not available



Source: Energy Information Administration, *Natural Gas Weekly*.



Data source: U.S. Energy Information Administration

Source: Energy Information Administration, *Electricity Monthly Update*

Mining-Related Commodity Prices

Commodity Price - Snapshot		
Metals Prices	Date	Price
Cobalt Spot Price (\$/lb)	2/10/25	\$9.77
Copper Spot Price (\$/lb)	2/11/25	\$4.58
Gold Spot Price (\$/ounce)	2/11/25	\$2,906.85
Lead Spot Price (\$/lb)	2/11/25	\$0.89
Lithium Spot Price (\$/kg)	2/11/25	\$10.49
Molybdenum Spot Price (\$/kg)	2/11/25	\$64.18
Nickel Spot Price (\$/lb)	2/11/25	\$7.01
Silver Spot Price (\$/ounce)	2/11/25	\$31.73
Steel HRC Price (\$/mt)	2/11/25	\$759.60
Steel Rebar Price (\$/mt)	2/11/25	\$438.47
Zinc Spot Price (\$/lb)	2/11/25	\$1.28
Energy Prices	Date	Price
Coal Price - Australian Premium Coking Coal Futures (\$/mt)	2/11/25	\$196.00
Coal Spot Price - Central Appalachian (\$/st)	2/7/25	\$76.50
Coal Spot Price - Newcastle futures (\$/mt)	2/11/25	\$104.77
Coal Spot Price - Rotterdam futures (\$/mt)	2/10/25	\$102.90
Natural Gas Spot Price - Henry Hub (\$/mmbtu)	2/5/25	\$3.22
Uranium Spot Price (\$/lb)	2/10/25	\$68.40

Sources: publically available data from eia.gov, dailymetalprice.com, tradingeconomics.com, sgxgroup.com, investing.com

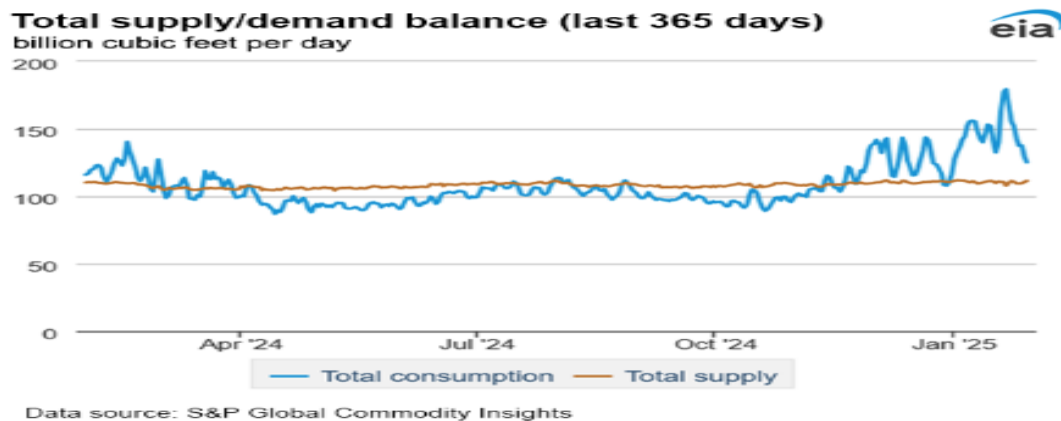
EIA Working Natural Gas Underground Storage

Working gas in underground storage

Region	Stocks billion cubic feet (Bcf)		
	2025-01-31	2025-01-24	change
East	507	552	-45
Midwest	605	661	-56
Mountain	200	212	-12
Pacific	230	246	-16
South Central	854	901	-47
Total	2,397	2,571	-174

Data source: U.S. Energy Information Administration Form EIA-912, *Weekly Underground Natural Gas Storage Report*
 Note: Totals may not equal sum of components because of independent rounding.

Source: Energy Information Administration, *Natural Gas Weekly Update*



Source: Energy Information Administration, *Natural Gas Weekly Update*

USGS Cobalt – U.S. Trade, Reported Stocks and Listed Prices

Cobalt - November 2024	Nov-24	Year to Date
U.S. Imports for Consumption - Metals (mt)	930	7,930
U.S. Exports of Cobalt Materials - Cobalt Content (mt)	471	4,310
Reported LME Stocks of Cobalt Metal (mt)	128	-
Listed Prices by Type (\$/lb): US Spot & LME Cash Avg.	15.68	10.91

Source: USGS, Mineral Industry Survey, Cobalt in November 2024, February 2025

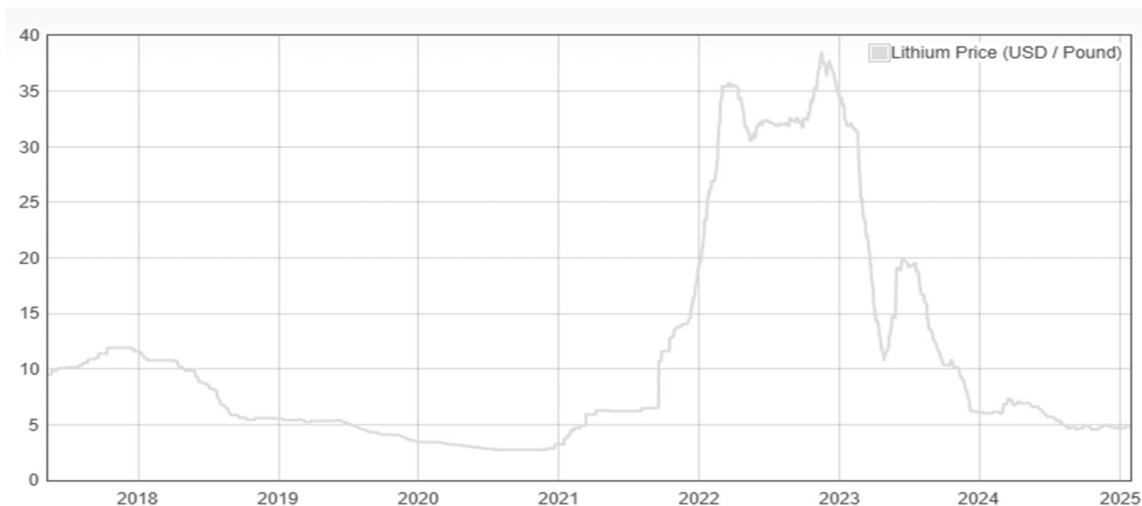
Cobalt and Lithium Prices

Cobalt Prices (US\$/pound):



Source: Dailymetalprice.com - <https://www.dailymetalprice.com/metalpricecharts.php?c=co&u=lb&d=0>

Lithium Prices (US\$/pound):



Source: Dailymetalprice.com - <https://www.dailymetalprice.com/metalpricecharts.php>