



NATIONAL MINING ASSOCIATION

WEEKLY STATISTICAL SUMMARY

February 21, 2025 Edition
(Data for Week Ending February 15, 2025)

Prepared by
National Mining Association

101 Constitution Avenue NW, Suite 500 East
Washington, DC 20001
(202) 463-2600
www.nma.org



NMA WEEKLY STATISTICAL SUMMARY

Vol. 62, No. 7 | Dated 02/21/25

COAL PRODUCTION, CONSUMPTION & TRADE

	Week Ended			* Cumulative Jan 1 to		
	2/15/25	2/17/24	% Chg	2/15/25	2/15/24	% Chg
EIA Coal Production (000 Tons):						
Week Ended/Year to Date	9,638	10,410	-7.4%	65,151	67,092	-2.9%
52 Weeks Ended	506,878	567,579	-10.7%			
AAR Coal Rail Cars Loaded:	54,447	59,534	-8.5%	367,027	385,130	-4.7%
EIA Coal Production						
Month Ended - January	Jan 25/24		% Chg	Jan - Jan 25/24		% Chg
	44,104	44,052	0.1%	44,104	44,052	0.1%

U.S. Department of Commerce Coal Trade (000 Tons)

	December 24/23		% Chg	Jan - Dec 24/23		% Chg
Coal Exports:						
Metallurgical	5,586	4,203	32.9%	56,856	51,292	10.8%
Steam Bit. *	3,649	4,185	-12.8%	49,981	47,686	4.8%
Lignite	3	12	-75.0%	143	99	44.4%
Anthracite	<u>59</u>	<u>85</u>	-30.6%	<u>737</u>	<u>775</u>	-4.9%
Total	9,297	8,485	9.6%	107,717	99,852	7.9%
Coal Imports:	127	233	-45.5%	1,998	4,010	-50.2%

	Week Ended			Cumulative Week 1 to		
	2/15/25	2/17/24	% Chg	2/15/25	2/17/24	% Chg
EI Electric Total Output (Mil. Kwh)	84,714	76,416	10.9%	599,022	565,586	5.9%
EI Coal Region Output (Mil. Kwh)	73,068	65,958	10.8%	519,942	489,906	6.1%
AISI Raw Steel Output (000 Tons)	1,670	1,726	-3.2%	10,879	10,912	-0.3%

EIA AVERAGE COAL & NATURAL GAS SPOT PRICES

Dollars Per Short Ton

Average Coal Spot Prices (\$/Short Ton)	Week Ending			Natural Gas Spot Prices (\$/MMBtu)	
	02/14/25	02/07/25	% Chg	Wed.	02/12/25
Central App, 12,500 Btu, 1.2 SO ₂	\$76.50	\$76.50	0.0%	Henry Hub	3.94
Northern App, 13,000 Btu, < 3.0 SO ₂	50.00	50.00	0.0%	New York	4.15
Illinois Basin, 11,800, 5.0 SO ₂	44.50	44.50	0.0%	Chicago	3.90
Powder River Basin, 8,800 Btu 0.8 SO ₂	14.20	14.20	0.0%	Cal.Comp.Avg.	3.73

Coal exports and Imports are "as reported" (not revised); *Steam bit. excludes lignite & anthracite. All data in this report are preliminary and subject to revision. r/ revised.

Sources: EIA; Edison Electric Institute; American Iron & Steel Institute; Association of American Railroads; Dept. of Commerce; S&P Global



EIA Estimated Weekly U.S. Coal Production Overview									
Coal-Producing Region & State (thousand short tons)	Week Ended			Year to Date			52 Weeks Ended		
	2/15/2025 (week 7)	2/8/2025 (week 6)	2/17/2024 (week 7)	2/15/2025	2/15/2024	% Change	2/15/2025	2/17/2024	% Change
Alabama	324	338	288	2,234	1,854	20.5	14,748	12,483	18.1
Alaska	20	21	24	137	156	-11.9	945	1,018	-7.2
Colorado	289	302	275	1,965	1,773	10.8	13,312	12,714	4.7
Illinois	738	760	780	4,968	5,029	-1.2	35,925	36,972	-2.8
Indiana	381	395	440	2,582	2,833	-8.9	19,776	23,114	-14.4
Kentucky total	479	491	528	3,217	3,405	-5.5	24,310	27,634	-12.0
Eastern (KY)	198	202	216	1,320	1,394	-5.3	10,239	11,994	-14.6
Western (KY)	281	289	312	1,897	2,012	-5.7	14,071	15,640	-10.0
Louisiana	5	5	6	31	36	-13.8	253	285	-11.2
Maryland	27	27	28	180	180	0.4	1,287	1,292	-0.4
Mississippi	40	37	22	241	140	72.0	2,205	2,513	-12.3
Missouri	3	3	3	22	19	15.2	157	140	12.1
Montana	505	527	517	3,418	3,330	2.7	27,013	28,811	-6.2
New Mexico	126	131	143	868	923	-5.9	7,052	7,808	-9.7
North Dakota	529	544	534	3,569	3,443	3.6	25,254	24,046	5.0
Ohio	35	35	38	232	248	-6.1	1,706	1,881	-9.3
Oklahoma	s	s	s	s	s	123.7	1	2	-50.0
Pennsylvania total	797	829	802	5,393	5,167	4.4	40,836	42,330	-3.5
Anthracite (PA)	64	68	62	445	402	10.6	3,143	2,985	5.3
Bituminous (PA)	733	762	739	4,949	4,765	3.9	37,693	39,345	-4.2
Texas	200	213	221	1,371	1,424	-3.7	11,584	13,316	-13.0
Utah	114	131	151	840	975	-13.9	6,708	6,839	-1.9
Virginia	185	185	187	1,216	1,204	1.0	9,437	10,230	-7.8
West Virginia total	1,574	1,610	1,612	10,588	10,390	1.9	79,073	83,429	-5.2
Northern (WV)	785	788	796	5,182	5,129	1.0	39,737	43,556	-8.8
Southern (WV)	789	822	816	5,405	5,261	2.7	39,336	39,873	-1.3
Wyoming	3,270	3,443	3,811	22,078	24,563	-10.1	185,296	230,722	-19.7
Appalachian total	3,138	3,227	3,171	21,164	20,436	3.6	157,325	163,639	-3.9
Interior total	1,648	1,704	1,783	11,112	11,493	-3.3	83,972	91,983	-8.7
Western total	4,852	5,100	5,456	32,875	35,164	-6.5	265,581	311,957	-14.9
East of Mississippi River	4,578	4,709	4,724	30,852	30,449	1.3	229,303	241,878	-5.2
West of Mississippi River	5,060	5,321	5,685	34,300	36,643	-6.4	277,575	325,701	-14.8
Bituminous and lignite	9,574	9,963	10,347	64,707	66,690	-3.0	503,735	564,594	-10.8
Anthracite	64	68	62	445	402	10.6	3,143	2,985	5.3
U.S. total	9,638	10,030	10,410	65,151	67,092	-2.9	506,878	567,579	-10.7
Railroad cars loaded	54,447	56,636	59,534	367,027	385,130	-4.7	2,923,563	3,362,248	-13.0

Source: Energy Information Administration



Weekly Electric Output

Volume 93 No. 7

OUTPUT FOR WEEK ENDED - Feb 15, 2025

The net available amount of electric energy distributed by the Total Electric Utility Industry+ for the week ended Saturday, **Feb 15, 2025** was **84,714** gigawatthours (GWh), according to the Edison Electric Institute.

WEEKLY ELECTRIC OUTPUT BY GEOGRAPHIC DIVISION

(48 CONTIGUOUS STATES)

	Week Ended February 15		52 Weeks Ended February 15	
	GWh Output	% Increase Over Corresponding Week of 2024	GWh Output	% Increase Over Corresponding Week of 2024
New England	2,555	12.44 %	114,044	2.18 %
Mid-Atlantic	8,825	8.97 %	418,053	3.20 %
Central Industrial	14,179	11.53 %	657,779	2.91 %
West Central	7,025	11.97 %	335,069	-0.68 %
Southeast	20,480	10.09 %	1,045,339	3.00 %
South Central	16,739	13.18 %	903,534	3.59 %
Rocky Mountain	5,820	6.24 %	305,725	4.07 %
Pacific Northwest	4,099	18.04 %	161,348	1.21 %
Pacific Southwest	4,991	5.90 %	274,215	2.62 %
Total United States	84,714	10.86 %	4,215,106	2.79 %

WEEKLY ELECTRIC OUTPUT IN PREVIOUS WEEKS--GWh

Week Ended	2025	Week Ended	2024	% Inc. (25/24)	52 Weeks Ended	2025	% Inc. (25/24)
Jan 25	97,259	Jan 27	80,177	21.30 %	Jan 25	4,198,401	2.25 %
Feb 01	81,767	Feb 03	77,013	6.17 %	Feb 01	4,203,156	2.54 %
Feb 08	79,239	Feb 10	75,587	4.83 %	Feb 08	4,206,808	2.62 %
Feb 15	84,714	Feb 17	76,416	10.86 %	Feb 15	4,215,106	2.79 %
Feb 15	599,022	Feb 17	565,586	5.91 %	YEAR TO DATE, FIRST 7 WEEKS		

EEI WEEKLY ELECTRIC OUTPUT BY GEOGRAPHIC DIVISION (48 CONTIGUOUS STATES)

	Week Ended			NMA CUMULATIVE JANUARY WEEK ONE TO			52 Weeks Ended		
	15-Feb 2025 GWh Output	17-Feb 2024 GWh Output	% Increase Over Corresponding Week	15-Feb 2025 GWh Output	17-Feb 2024 GWh Output	% Increase Over Corresponding Week	15-Feb 2025 GWh Output	17-Feb 2024 GWh Output	% Increase Over Corresponding Week
New England	2,555	2,272	12.5%	17,613	16,522	6.6%	114,044	111,606	2.2%
Mid-Atlantic	8,825	8,099	9.0%	62,079	57,959	7.1%	418,053	405,099	3.2%
Central Industrial	14,179	12,713	11.5%	97,717	92,900	5.2%	657,779	639,155	2.9%
West Central	7,025	6,274	12.0%	47,578	46,140	3.1%	335,069	337,359	-0.7%
Southeast	20,480	18,604	10.1%	151,687	142,246	6.6%	1,045,339	1,014,878	3.0%
South Central	16,739	14,790	13.2%	119,782	110,780	8.1%	903,534	872,215	3.6%
Rocky Mountain	5,820	5,478	6.2%	41,099	39,881	3.1%	305,725	293,783	4.1%
Pacific Northwest	4,099	3,473	18.0%	27,004	25,362	6.5%	161,348	159,421	1.2%
Pacific Southwest	4,991	4,713	5.9%	34,462	33,795	2.0%	274,215	267,211	2.6%
Total United States ^{1/}	84,713	76,416	10.9%	599,021	565,585	5.9%	4,215,106	4,100,727	2.8%
Coal Regions Only ^{2/}	73,068	65,958	10.8%	519,942	489,906	6.1%	3,665,499	3,562,489	2.9%

Notes: EEI output data are an estimate of electricity load made available for distribution derived as weekly net generation + purchases from non-utilities + net imports - exports - sales for resale. It is not meant to be a measure of electricity generation for the U.S. EEI survey data represent the majority of national distribution (large utilities, large government power projects, some independent and large municipal power projects). The remaining segment of the industry (smaller producers) is estimated. Non-utility generation is captured via direct sales to utilities.

^{1/} Excludes Alaska and Hawaii

^{2/} Excludes New England and Pacific regions

SOURCE: Edison Electric Institute (EEI), *Weekly Electric Output Report*.

AMERICAN IRON AND STEEL INSTITUTE
 25 Massachusetts Avenue, NW, Suite 800
 Washington, D.C. 20001

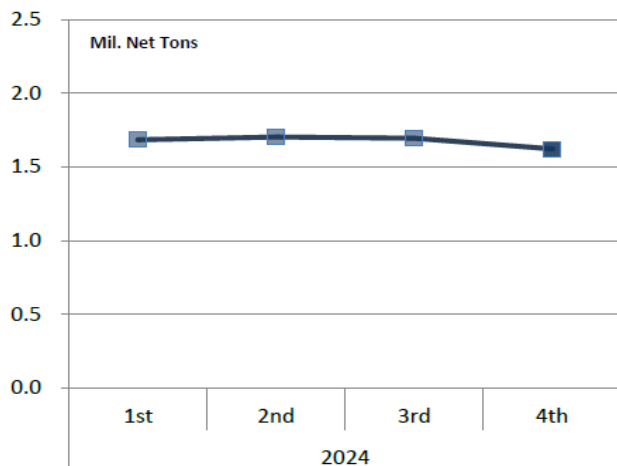
February 17, 2025

ESTIMATED WEEKLY RAW STEEL * PRODUCTION

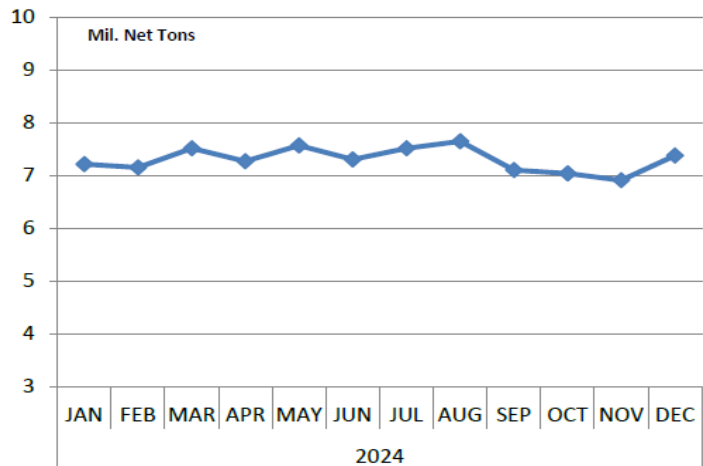
<u>Period</u>	<u>Thousand Net Tons</u>	<u>Percent Change from Previous Period</u>	<u>Percent Capability Utilization**</u>	<u>Production by District</u>		
				<u>Week Ending</u>		
				<u>Feb 15</u>	<u>Feb 8</u>	
<u>Week Ending</u>				North East	122	120
				Great Lakes	487	496
Feb 15, 2025	1,670	-0.3	75.0	Midwest	247	250
Feb 15, 2024	1,726	-3.2	77.7	Southern	750	747
Feb 8, 2025	1,675	1.1	75.2	Western	64	62
				Total	1,670	1,675
<u>Year-to-Date +</u>						
Feb 15, 2025	10,879	-0.3	74.3			
Feb 15, 2024	10,912	-	75.4			

*Raw steel production tonnage included in this report is estimated based on a sampling of steel producers (50% of domestic producers). Therefore, this report should be used primarily to assess production trends. The AISI production report "AIS 7," produced monthly and available by subscription, provides a more accurate summary of steel production based on data supplied by companies representing approximately 75% of U.S. production capacity plus includes revisions for previous months.

Average Weekly Raw Steel Production



Monthly Raw Steel Production



*Steel in the first solid state after melting suitable for further processing or sale, including ingots, steel for castings and strand or pressure cast blooms, slabs or other product forms. ** Based on tonnage capability to produce raw steel for a sustained full order book.

U.S. Rail Traffic¹
Week 7, 2025 – Ended February 15, 2025

	This Week		Year-To-Date		
	Cars	vs 2024	Cumulative	Avg/wk ²	vs 2024
Total Carloads	209,216	-4.8%	1,453,273	207,610	-0.7%
Chemicals	32,246	-4.9%	226,026	32,289	3.1%
Coal	54,447	-7.6%	391,386	55,912	-3.9%
Farm Products excl. Grain, and Food	16,580	-4.6%	119,831	17,119	5.5%
Forest Products	8,247	-1.4%	57,477	8,211	1.6%
Grain	19,645	-5.9%	145,589	20,798	3.5%
Metallic Ores and Metals	17,270	-11.0%	122,396	17,485	-9.3%
Motor Vehicles and Parts	14,782	-0.4%	88,144	12,592	-3.9%
Nonmetallic Minerals	26,611	-1.6%	170,129	24,304	-0.7%
Petroleum and Petroleum Products	10,948	15.9%	73,652	10,522	6.2%
Other	8,440	-12.2%	58,643	8,378	-0.4%
Total Intermodal Units	271,524	7.0%	1,885,295	269,328	9.3%
Total Traffic	480,740	1.5%	3,338,568	476,938	4.7%

¹ Excludes U.S. operations of CPKC, CN and GMXT.

² Average per week figures may not sum to totals as a result of independent rounding.

Source: AAR website - <https://www.aar.org/Pages/NEWS-and-EVENTS.aspx>

Copper, Gold and Silver Prices

Copper Prices:

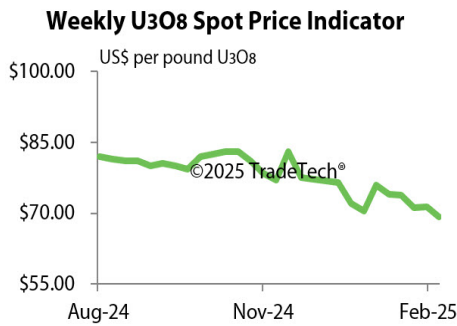


Gold and Silver Prices:



Source: Dailymetalprice.com - <https://www.dailymetalprice.com/metalprices.php>

Trade Tech's and UX's Uranium Price Indicators



Sources: Trade Tech, Uranium Info Website – www.uranium.info ; Source: Ux Consulting Co., LLC – <http://www.uxc.com>

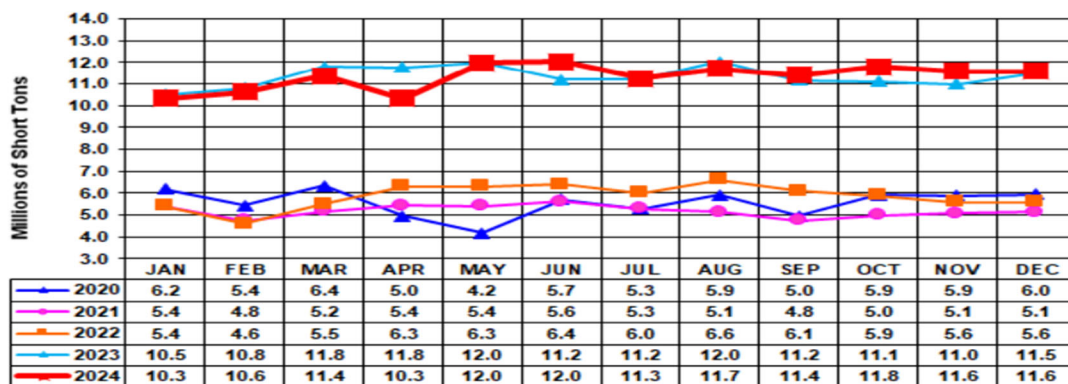
Coal stocks and average number of days of burn for non-lignite coal by region (electric power sector)

Zone	Coal	November 2024		November 2023		% Change of Stocks	October 2024		% Change of Stocks
		Stocks (1000 tons)	Days of Burn	Stocks (1000 tons)	Days of Burn		Stocks (1000 tons)	Days of Burn	
Northeast	Bituminous	2,127	166	2,442	251	-12.9%	2,150	174	-1.1%
	Subbituminous	-	-	-	-	-	-	-	-
South	Bituminous	20,805	151	22,615	165	-8.0%	20,339	143	2.3%
	Subbituminous	6,284	102	6,598	113	-4.8%	5,962	96	5.4%
Midwest	Bituminous	12,472	145	13,260	148	-5.9%	11,869	131	5.1%
	Subbituminous	33,699	154	33,303	179	1.2%	33,706	146	-0.0%
West	Bituminous	3,145	221	2,755	190	14.2%	3,292	228	-4.5%
	Subbituminous	31,176	172	31,390	183	-0.7%	30,183	158	3.3%
U.S. Total	Bituminous	38,549	154	41,073	164	-6.1%	37,649	144	2.4%
	Subbituminous	71,158	155	71,291	173	-0.2%	69,852	143	1.9%

Source: U.S. Energy Information Administration

Source: Energy Information Administration, Electric Monthly Update

Coal and Coke Monthly Indicator for Internal U.S. Waterways



For the Internal U.S. Waterway Monthly Indicators, estimates for the most recent month are based on lock performance management data. The estimates will be superseded by actual data as it becomes available.

Source: Waterborne Commerce Statistics Center

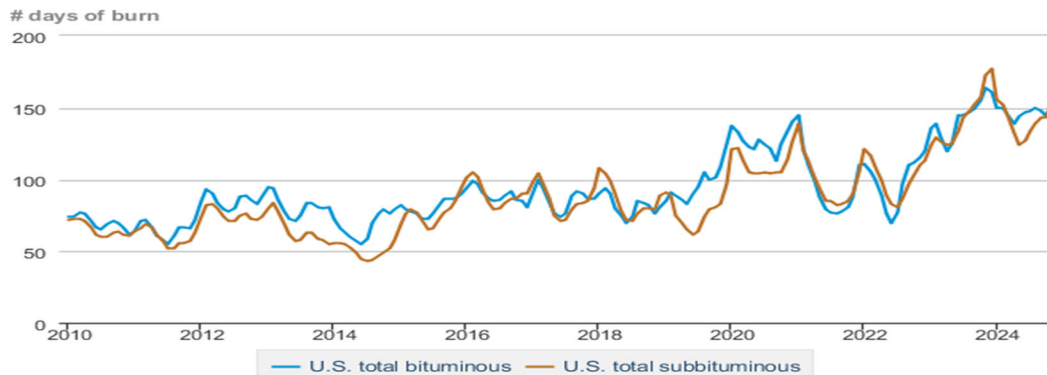
Average weekly coal commodity spot prices dollars per short ton

	Week ending					Week ago change
	01/17/25	01/24/25	01/31/25	02/07/25	02/14/25	
Central Appalachia 12,500 Btu, 1.2 SO ₂	\$77.30	\$76.50	\$76.50	\$76.50	\$76.50	\$0.00
Northern Appalachia 13,000 Btu, < 3.0 SO ₂	\$50.50	\$51.00	\$51.00	\$50.00	\$50.00	\$0.00
Illinois Basin 11,800 Btu, 5.0 SO ₂	\$44.00	\$44.50	\$44.50	\$44.50	\$44.50	\$0.00
Powder River Basin 8,800 Btu, 0.8 SO ₂	\$14.15	\$14.20	\$14.20	\$14.20	\$14.20	\$0.00

Data source: With permission, S&P Global

Source: Energy Information Administration (with permission from S&P Global), *Coal Market Report*

Days of burn by non-lignite coal rank, January 2010 - November 2024



 Data source: U.S. Energy Information Administration

Source: Energy Information Administration, *Electricity Monthly Update Report*

Temperature – heating & cooling degree days (week ending Feb 06)

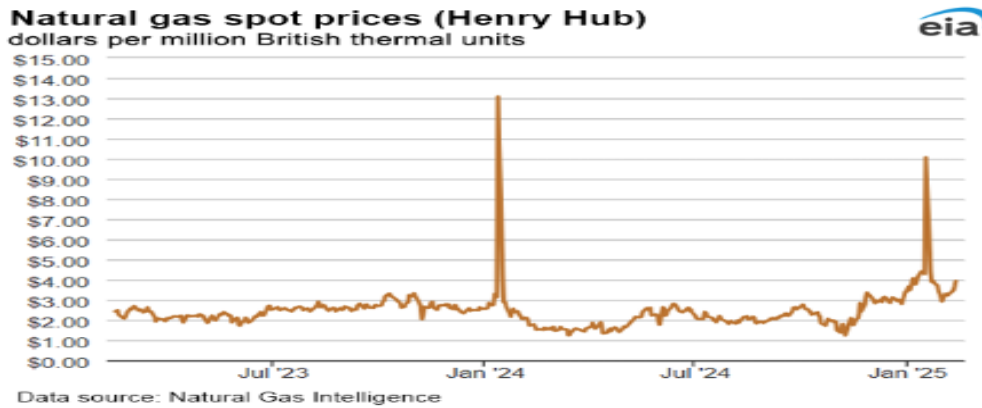
Region	HDDs			CDDs		
	Current total	Deviation from normal	Deviation from last year	Current total	Deviation from normal	Deviation from last year
New England	278	6	44	0	0	0
Middle Atlantic	246	-14	26	0	0	0
E N Central	238	-49	35	0	0	0
W N Central	244	-54	70	0	0	0
South Atlantic	115	-59	-33	9	2	8
E S Central	83	-94	-47	1	1	1
W S Central	53	-73	-18	12	8	11
Mountain	166	-52	-17	1	0	1
Pacific	111	1	-10	0	0	0
United States	176	-40	9	3	1	3

Data source: National Oceanic and Atmospheric Administration
Note: HDDs=heating degree days; CDDs=cooling degree days

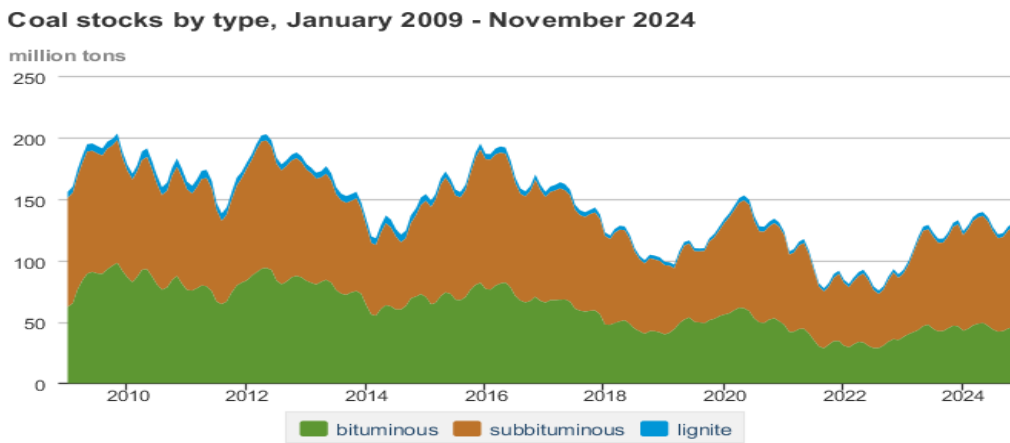
Source: Energy Information Administration, *Natural Gas Weekly Update*.

U.S. Production of Selected Mineral Commodities	2024 Year to Date - 3rd Quarter	2023 Year to Date - 3rd Quarter	Percent Change
Aluminum, secondary (000 Mt.)	670.0	686.0	-2%
Cement (Mil. Mt.)	62.5	66.9	-7%
Copper (000 Mt.)	777.0	835.0	-7%
Gold (Mt.)	118.0	124.0	-5%
Gypsum (Mil. Mt.)	14.2	14.0	1%
Iron Ore (Mil. Mt.)	34.6	32.9	5%
Lead (000 Mt.)	217.0	200.0	9%
Molybdenum (000 Mt.)	25.1	25.0	0%
Palladium (Mt.)	8.4	7.5	12%
Phosphate rock (Mil. Mt.)	14.9	14.9	0%
Platinum (Mt.)	2.5	2.2	14%
Sand & gravel, construction (Mil. Mt.)	684.0	731.0	-6%
Silver (Mt.)	771.0	764.0	1%
Soda ash (Mil. Mt.)	8.7	8.1	7%
Stone, crushed (Mil. Mt.)	1,110.0	1,170.0	-5%
Zinc (000 Mt.)	564.0	544.0	4%

Source: U.S. Geological Survey, Mineral Industry Surveys. Percent change based on USGS rounded numbers. 2024 data are preliminary estimates. W - withheld, N/A - not available



Source: Energy Information Administration, *Natural Gas Weekly*.



Source: Energy Information Administration, *Electricity Monthly Update*

Mining-Related Commodity Prices

Commodity Price - Snapshot		
Metals Prices	Date	Price
Cobalt Spot Price (\$/lb)	2/17/25	\$9.77
Copper Spot Price (\$/lb)	2/18/25	\$4.58
Gold Spot Price (\$/ounce)	2/18/25	\$2,933.20
Lead Spot Price (\$/lb)	2/18/25	\$0.90
Lithium Spot Price (\$/kg)	2/18/25	\$10.46
Molybdenum Spot Price (\$/kg)	2/18/25	\$64.42
Nickel Spot Price (\$/lb)	2/18/25	\$6.96
Silver Spot Price (\$/ounce)	2/18/25	\$32.86
Steel HRC Price (\$/mt)	2/18/25	\$772.73
Steel Rebar Price (\$/mt)	2/18/25	\$445.50
Zinc Spot Price (\$/lb)	2/18/25	\$1.31
Energy Prices	Date	Price
Coal Price - Australian Premium Coking Coal Futures (\$/mt)	2/18/25	\$194.50
Coal Spot Price - Central Appalachian (\$/st)	2/14/25	\$76.50
Coal Spot Price - Newcastle futures (\$/mt)	2/18/25	\$100.91
Coal Spot Price - Rotterdam futures (\$/mt)	2/18/25	\$101.90
Natural Gas Spot Price - Henry Hub (\$/mmbtu)	2/12/25	\$3.94
Uranium Spot Price (\$/lb)	2/14/25	\$66.45

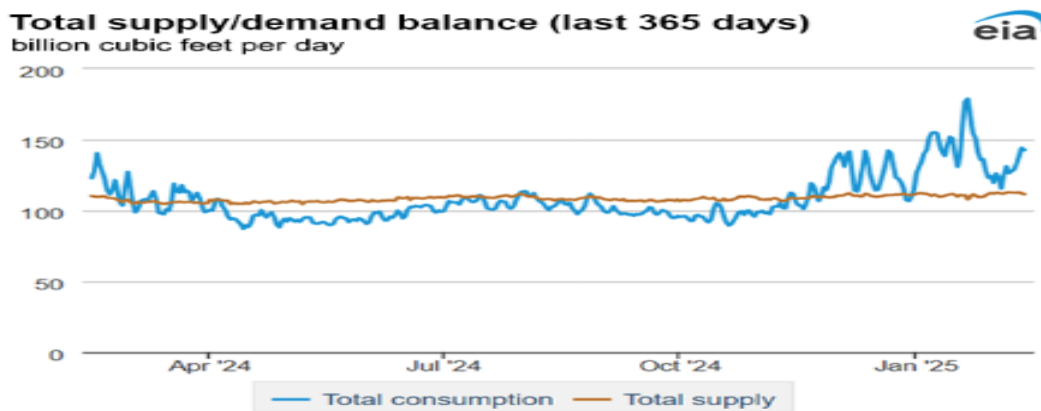
Sources: publically available data from eia.gov, dailymetalprice.com, tradingeconomics.com, sgxgroup.com, investing.com

EIA Working Natural Gas Underground Storage

Region	Stocks billion cubic feet (Bcf)		
	2025-02-07	2025-01-31	change
East	468	507	-39
Midwest	559	605	-46
Mountain	193	200	-7
Pacific	224	230	-6
South Central	853	854	-1
Total	2,297	2,397	-100

Data source: U.S. Energy Information Administration Form EIA-912, *Weekly Underground Natural Gas Storage Report*
 Note: Totals may not equal sum of components because of independent rounding.

Source: Energy Information Administration, *Natural Gas Weekly Update*



Data source: S&P Global Commodity Insights

Source: Energy Information Administration, *Natural Gas Weekly Update*

USGS Cobalt – U.S. Trade, Reported Stocks and Listed Prices

Cobalt - November 2024	Nov-24	Year to Date
U.S. Imports for Consumption - Metals (mt)	930	7,930
U.S. Exports of Cobalt Materials - Cobalt Content (mt)	471	4,310
Reported LME Stocks of Cobalt Metal (mt)	128	-
Listed Prices by Type (\$/lb): US Spot & LME Cash Avg.	15.68	10.91

Source: USGS, Mineral Industry Survey, Cobalt in November 2024, February 2025

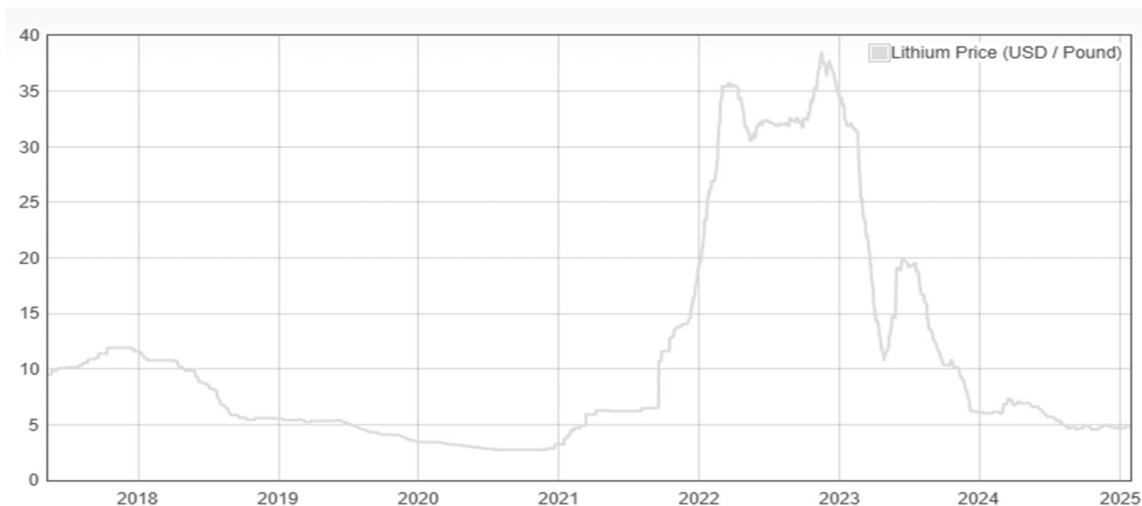
Cobalt and Lithium Prices

Cobalt Prices (US\$/pound):



Source: Dailymetalprice.com - <https://www.dailymetalprice.com/metalpricecharts.php?c=co&u=lb&d=0>

Lithium Prices (US\$/pound):



Source: Dailymetalprice.com - <https://www.dailymetalprice.com/metalpricecharts.php>