



NATIONAL MINING ASSOCIATION

WEEKLY STATISTICAL SUMMARY

March 7, 2025 Edition
(Data for Week Ending March 1, 2025)

Prepared by
National Mining Association

101 Constitution Avenue NW, Suite 500 East
Washington, DC 20001
(202) 463-2600
www.nma.org



NMA WEEKLY STATISTICAL SUMMARY

Vol. 62, No. 9 | Dated 03/07/25

COAL PRODUCTION, CONSUMPTION & TRADE

	Week Ended			* Cumulative Jan 1 to		
	3/01/25	3/02/24	% Chg	3/01/25	3/01/24	% Chg
EIA Coal Production (000 Tons):						
Week Ended/Year to Date	10,627	10,129	4.9%	84,246	89,582	-6.0%
52 Weeks Ended	505,081	564,728	-10.6%			
AAR Coal Rail Cars Loaded:	60,073	57,929	3.7%	474,952	513,755	-7.6%
EIA Coal Production Month Ended - January	Jan 25/24 44,104	Jan 25/24 44,052	% Chg 0.1%	Jan - Jan 25/24 44,104	Jan - Jan 25/24 44,052	% Chg 0.1%

U.S. Department of Commerce Coal Trade (000 Tons)

	December 24/23		% Chg	Jan - Dec 24/23		% Chg
Coal Exports:						
Metallurgical	5,586	4,203	32.9%	56,856	51,292	10.8%
Steam Bit. *	3,649	4,185	-12.8%	49,981	47,686	4.8%
Lignite	3	12	-75.0%	143	99	44.4%
Anthracite	<u>59</u>	<u>85</u>	-30.6%	<u>737</u>	<u>775</u>	-4.9%
Total	9,297	8,485	9.6%	107,717	99,852	7.9%
Coal Imports:	127	233	-45.5%	1,998	4,010	-50.2%

	Week Ended			Cumulative Week 1 to		
	3/01/25	3/02/24	% Chg	3/01/25	3/02/24	% Chg
EI Electric Total Output (Mil. Kwh)	76,865	75,244	2.2%	766,559	716,443	7.0%
EI Coal Region Output (Mil. Kwh)	66,793	64,879	3.0%	666,643	620,205	7.5%
AISI Raw Steel Output (000 Tons)	1,641	1,721	-4.6%	14,179	14,359	-1.3%

EIA AVERAGE COAL & NATURAL GAS SPOT PRICES

Dollars Per Short Ton

Average Coal Spot Prices (\$/Short Ton)	Week Ending			Natural Gas Spot Prices (\$/MMBtu)	
	02/28/25	02/21/25	% Chg	Wed.	02/26/25
Central App, 12,500 Btu, 1.2 SO ₂	\$76.00	\$76.00	0.0%	Henry Hub	3.91
Northern App, 13,000 Btu, < 3.0 SO ₂	50.00	50.00	0.0%	New York	3.60
Illinois Basin, 11,800, 5.0 SO ₂	44.00	44.00	0.0%	Chicago	3.60
Powder River Basin, 8,800 Btu 0.8 SO ₂	14.20	14.20	0.0%	Cal.Comp.Avg.	3.56

Coal exports and Imports are "as reported" (not revised); *Steam bit. excludes lignite & anthracite. All data in this report are preliminary and subject to revision. r/ revised.

Sources: EIA; Edison Electric Institute; American Iron & Steel Institute; Association of American Railroads; Dept. of Commerce; S&P Global



EIA Estimated Weekly U.S. Coal Production Overview									
Coal-Producing Region & State (thousand short tons)	Week Ended			Year to Date			52 Weeks Ended		
	3/1/2025 (week 9)	2/22/2025 (week 8)	3/2/2024 (week 9)	3/1/2025	3/1/2024	% Change	3/1/2025	3/2/2024	% Change
Alabama	358	303	280	2,895	2,475	17.0	14,831	12,618	17.5
Alaska	22	19	24	178	208	-14.3	937	1,021	-8.2
Colorado	320	257	268	2,542	2,368	7.4	13,337	12,821	4.0
Illinois	805	647	759	6,421	6,714	-4.4	35,811	36,971	-3.1
Indiana	419	338	428	3,339	3,783	-11.7	19,651	22,926	-14.3
Kentucky total	520	418	514	4,155	4,547	-8.6	24,189	27,474	-12.0
Eastern (KY)	214	170	210	1,704	1,861	-8.4	10,189	11,914	-14.5
Western (KY)	307	248	304	2,452	2,686	-8.7	13,999	15,560	-10.0
Louisiana	5	4	5	41	48	-16.2	251	284	-11.6
Maryland	29	24	27	233	240	-2.8	1,284	1,298	-1.1
Mississippi	39	27	21	307	187	64.3	2,228	2,462	-9.5
Missouri	4	3	3	28	25	11.2	157	141	11.3
Montana	559	444	503	4,421	4,446	-0.6	26,980	28,744	-6.1
New Mexico	139	118	139	1,125	1,232	-8.7	7,021	7,757	-9.5
North Dakota	576	468	520	4,613	4,597	0.3	25,226	24,045	4.9
Ohio	37	30	37	300	331	-9.3	1,696	1,862	-8.9
Oklahoma	s	s	s	s	s	117.9	1	2	-50.0
Pennsylvania total	879	702	780	6,975	6,899	1.1	40,808	42,232	-3.4
Anthracite (PA)	72	60	61	576	537	7.4	3,150	3,006	4.8
Bituminous (PA)	807	642	719	6,398	6,362	0.6	37,659	39,225	-4.0
Texas	226	179	215	1,777	1,901	-6.6	11,546	13,174	-12.4
Utah	139	119	147	1,098	1,302	-15.7	6,663	6,818	-2.3
Virginia	196	155	182	1,567	1,607	-2.5	9,413	10,117	-7.0
West Virginia total	1,706	1,385	1,569	13,679	13,873	-1.4	78,929	83,091	-5.0
Northern (WV)	835	662	774	6,680	6,849	-2.5	39,637	43,261	-8.4
Southern (WV)	871	723	794	6,999	7,024	-0.4	39,291	39,830	-1.4
Wyoming	3,648	2,827	3,708	28,553	32,797	-12.9	184,122	228,869	-19.6
Appalachian total	3,419	2,770	3,085	27,353	27,286	0.2	157,151	163,133	-3.7
Interior total	1,805	1,446	1,735	14,364	15,345	-6.4	83,644	91,519	-8.6
Western total	5,404	4,252	5,309	42,530	46,951	-9.4	264,286	310,075	-14.8
East of Mississippi River	4,989	4,030	4,597	39,871	40,656	-1.9	228,840	241,053	-5.1
West of Mississippi River	5,638	4,438	5,532	44,376	48,926	-9.3	276,241	323,675	-14.7
Bituminous and lignite	10,556	8,408	10,068	83,670	89,046	-6.0	501,931	561,721	-10.6
Anthracite	72	60	61	576	537	7.4	3,150	3,006	4.8
U.S. total	10,627	8,468	10,129	84,246	89,582	-6.0	505,081	564,728	-10.6
Railroad cars loaded	60,073	47,852	57,929	474,952	513,755	-7.6	2,912,003	3,344,612	-12.9

Source: Energy Information Administration



Weekly Electric Output

Volume 93 No. 9

OUTPUT FOR WEEK ENDED - Mar 01, 2025

The net available amount of electric energy distributed by the Total Electric Utility Industry+ for the week ended Saturday, **Mar 01, 2025** was **76,865** gigawatthours (GWh), according to the Edison Electric Institute.

WEEKLY ELECTRIC OUTPUT BY GEOGRAPHIC DIVISION

(48 CONTIGUOUS STATES)

	Week Ended March 01		52 Weeks Ended March 01	
	GWh Output	% Increase Over Corresponding Week of 2024	GWh Output	% Increase Over Corresponding Week of 2024
New England	2,174	1.41 %	114,384	2.66 %
Mid-Atlantic	7,711	0.00 %	419,158	3.37 %
Central Industrial	12,494	3.81 %	660,924	3.32 %
West Central	6,256	5.47 %	336,594	-0.10 %
Southeast	19,190	1.65 %	1,049,405	3.15 %
South Central	15,431	5.86 %	909,643	4.22 %
Rocky Mountain	5,711	-0.56 %	306,179	4.41 %
Pacific Northwest	3,288	-9.37 %	161,221	1.56 %
Pacific Southwest	4,608	0.32 %	274,279	2.86 %
Total United States	76,865	2.15 %	4,231,788	3.16 %

WEEKLY ELECTRIC OUTPUT IN PREVIOUS WEEKS--GWh

Week Ended	2025	Week Ended	2024	% Inc. (25/24)	52 Weeks Ended	2025	% Inc. (25/24)
Feb 08	79,239	Feb 10	75,587	4.83 %	Feb 08	4,206,808	2.62 %
Feb 15	84,714	Feb 17	76,416	10.86 %	Feb 15	4,215,106	2.79 %
Feb 22	90,673	Feb 24	75,613	19.92 %	Feb 22	4,230,167	3.13 %
Mar 01	76,865	Mar 02	75,244	2.15 %	Mar 01	4,231,788	3.16 %
Mar 01	766,559	Mar 02	716,443	7.00 %	YEAR TO DATE, FIRST 9 WEEKS		

EEI WEEKLY ELECTRIC OUTPUT BY GEOGRAPHIC DIVISION (48 CONTIGUOUS STATES)

	Week Ended			NMA CUMULATIVE JANUARY WEEK ONE TO			52 Weeks Ended		
	1-Mar 2025 GWh Output	2-Mar 2024 GWh Output	% Increase Over Corresponding Week	1-Mar 2025 GWh Output	2-Mar 2024 GWh Output	% Increase Over Corresponding Week	1-Mar 2025 GWh Output	2-Mar 2024 GWh Output	% Increase Over Corresponding Week
New England	2,174	2,144	1.4%	22,343	20,912	6.8%	114,384	111,409	2.7%
Mid-Atlantic	7,711	7,711	0.0%	79,021	73,796	7.1%	419,158	405,473	3.4%
Central Industrial	12,494	12,036	3.8%	125,136	117,174	6.8%	660,924	639,674	3.3%
West Central	6,256	5,932	5.5%	61,097	58,135	5.1%	336,594	336,915	-0.1%
Southeast	19,190	18,879	1.6%	193,956	180,449	7.5%	1,049,405	1,017,402	3.1%
South Central	15,431	14,578	5.9%	154,902	139,792	10.8%	909,643	872,803	4.2%
Rocky Mountain	5,711	5,743	-0.6%	52,531	50,859	3.3%	306,179	293,235	4.4%
Pacific Northwest	3,288	3,628	-9.4%	33,838	32,323	4.7%	161,221	158,746	1.6%
Pacific Southwest	4,608	4,593	0.3%	43,733	43,002	1.7%	274,279	266,649	2.9%
Total United States ^{1/}	<u>76,863</u>	<u>75,244</u>	2.2%	<u>766,557</u>	<u>716,442</u>	7.0%	<u>4,231,787</u>	<u>4,102,306</u>	3.2%
Coal Regions Only ^{2/}	66,793	64,879	3.0%	666,643	620,205	7.5%	3,681,903	3,565,502	3.3%

Notes: EEI output data are an estimate of electricity load made available for distribution derived as weekly net generation + purchases from non-utilities + net imports - exports - sales for resale. It is not meant to be a measure of electricity generation for the U.S. EEI survey data represent the majority of national distribution (large utilities, large government power projects, some independent and large municipal power projects). The remaining segment of the industry (smaller producers) is estimated. Non-utility generation is captured via direct sales to utilities.

^{1/} Excludes Alaska and Hawaii

^{2/} Excludes New England and Pacific regions

SOURCE: Edison Electric Institute (EEI), *Weekly Electric Output Report*.

AMERICAN IRON AND STEEL INSTITUTE
 25 Massachusetts Avenue, NW, Suite 800
 Washington, D.C. 20001

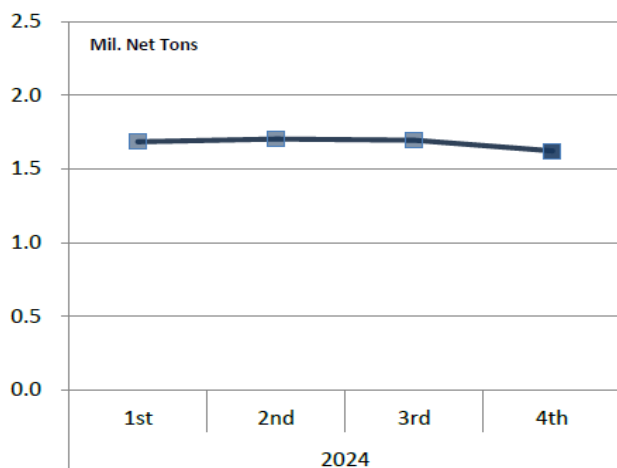
March 3, 2025

ESTIMATED WEEKLY RAW STEEL * PRODUCTION

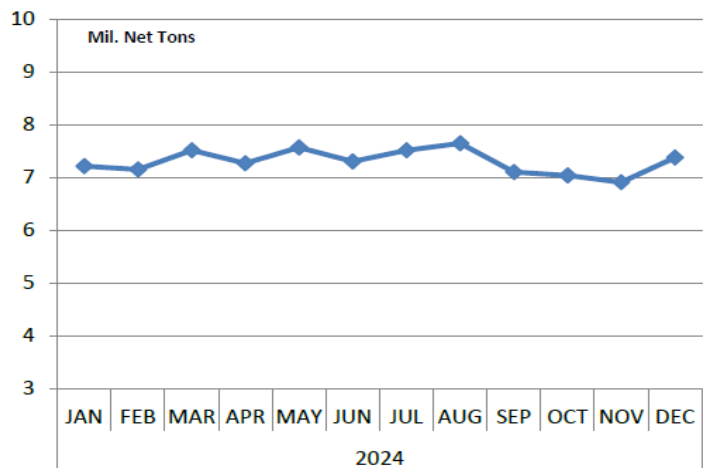
<u>Period</u>	<u>Thousand Net Tons</u>	<u>Percent Change from Previous Period</u>	<u>Percent Capability Utilization**</u>	<u>Production by District</u>		
				<u>Week Ending</u>		
				<u>Mar 1</u>	<u>Feb 22</u>	
<u>Week Ending</u>				North East	122	107
				Great Lakes	464	481
Mar 1, 2025	1,641	-1.1	73.7	Midwest	229	238
Mar 1, 2024	1,721	-4.6	77.5	Southern	763	768
Feb 22, 2025	1,659	-0.7	74.5	Western	63	65
				Total	1,641	1,659
<u>Year-to-Date +</u>						
Mar 1, 2025	14,179	-1.3	74.3			
Mar 1, 2024	14,359	-	75.4			

*Raw steel production tonnage included in this report is estimated based on a sampling of steel producers (50% of domestic producers). Therefore, this report should be used primarily to assess production trends. The AISI production report "AIS 7," produced monthly and available by subscription, provides a more accurate summary of steel production based on data supplied by companies representing approximately 75% of U.S. production capacity plus includes revisions for previous months.

Average Weekly Raw Steel Production



Monthly Raw Steel Production



*Steel in the first solid state after melting suitable for further processing or sale, including ingots, steel for castings and strand or pressure cast blooms, slabs or other product forms. ** Based on tonnage capability to produce raw steel for a sustained full order book.

U.S. Rail Traffic¹
 Week 9, 2025 – Ended March 1, 2025

	This Week		Year-To-Date		
	Cars	vs 2024	Cumulative	Avg/wk ²	vs 2024
Total Carloads	222,757	1.4%	1,869,282	207,698	-2.0%
Chemicals	33,742	1.4%	293,295	32,588	2.6%
Coal	60,073	4.7%	499,311	55,479	-5.0%
Farm Products excl. Grain, and Food	17,567	-1.3%	154,040	17,116	3.6%
Forest Products	8,335	1.3%	74,190	8,243	1.2%
Grain	20,924	7.7%	182,887	20,321	0.6%
Metallic Ores and Metals	18,964	-3.7%	158,105	17,567	-9.1%
Motor Vehicles and Parts	16,435	3.4%	118,524	13,169	-4.1%
Nonmetallic Minerals	27,396	-4.9%	220,352	24,484	-3.2%
Petroleum and Petroleum Products	10,392	0.5%	93,109	10,345	3.3%
Other	8,929	-0.1%	75,469	8,385	-1.0%
Total Intermodal Units	285,774	8.8%	2,436,330	270,703	8.5%
Total Traffic	508,531	5.4%	4,305,612	478,401	3.7%

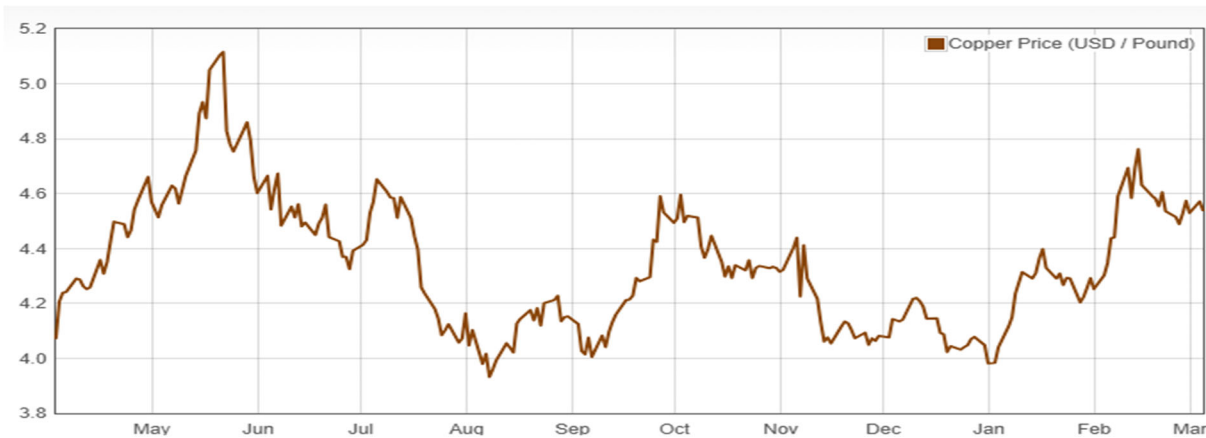
¹ Excludes U.S. operations of CPKC, CN and GMXT.

² Average per week figures may not sum to totals as a result of independent rounding.

Source: AAR website - <https://www.aar.org/Pages/NEWS-and-EVENTS.aspx>

Copper, Gold and Silver Prices

Copper Prices:

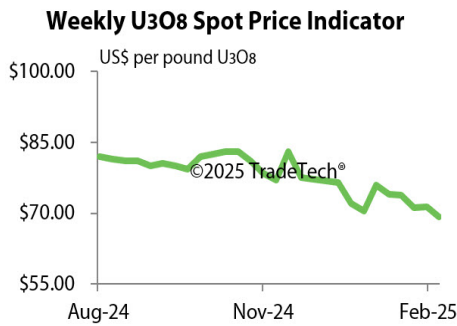


Gold and Silver Prices:



Source: Dailymetalprice.com - <https://www.dailymetalprice.com/metalprices.php>

Trade Tech's and UX's Uranium Price Indicators



Sources: Trade Tech, Uranium Info Website – www.uranium.info ; Source: Ux Consulting Co., LLC – <http://www.uxc.com>

Coal stocks and average number of days of burn for non-lignite coal by region (electric power sector)

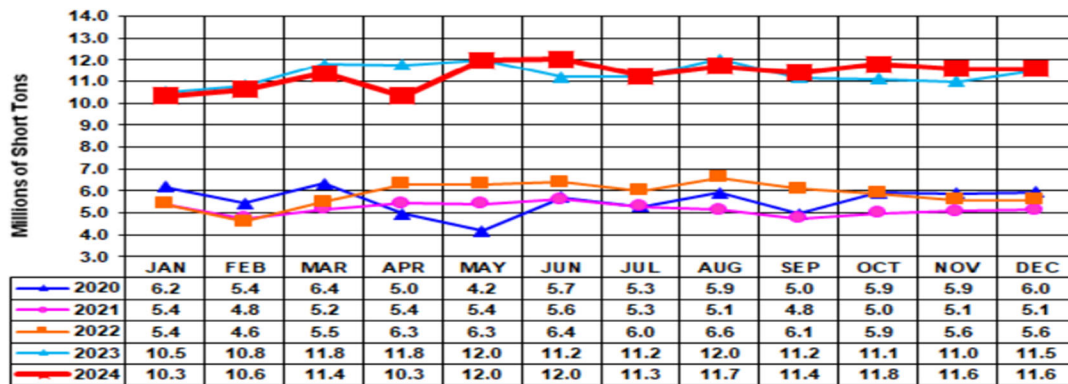
Zone	Coal	December 2024		December 2023		% Change of Stocks	November 2024		% Change of Stocks
		Stocks (1000 tons)	Days of Burn	Stocks (1000 tons)	Days of Burn		Stocks (1000 tons)	Days of Burn	
Northeast	Bituminous	1,847	145	2,616	339	-29.4%	2,127	166	-13.1%
	Subbituminous	-	-	-	-	-	-	-	-
South	Bituminous	19,586	142	22,697	160	-13.7%	20,806	151	-5.9%
	Subbituminous	6,145	101	6,922	130	-11.2%	6,284	102	-2.2%
Midwest	Bituminous	11,846	146	12,578	145	-5.8%	12,472	145	-5.0%
	Subbituminous	32,647	156	35,034	182	-6.8%	33,699	154	-3.1%
West	Bituminous	2,928	206	2,731	189	7.2%	3,145	221	-6.9%
	Subbituminous	31,972	177	32,507	182	-1.6%	31,176	172	2.6%
U.S. Total	Bituminous	36,208	148	40,623	161	-10.9%	38,550	154	-6.1%
	Subbituminous	70,763	159	74,463	177	-5.0%	71,158	155	-0.6%

Source: U.S. Energy Information Administration

NOTE: Stockpile levels shown above reflect a sample of electric power sector plants, which were used to create the days of burn statistics. These levels will not equal total electric power sector stockpile levels.

Source: Energy Information Administration, Electric Monthly Update

Coal and Coke Monthly Indicator for Internal U.S. Waterways



For the Internal U.S. Waterway Monthly Indicators, estimates for the most recent month are based on lock performance management data. The estimates will be superseded by actual data as it becomes available.

Source: Waterborne Commerce Statistics Center

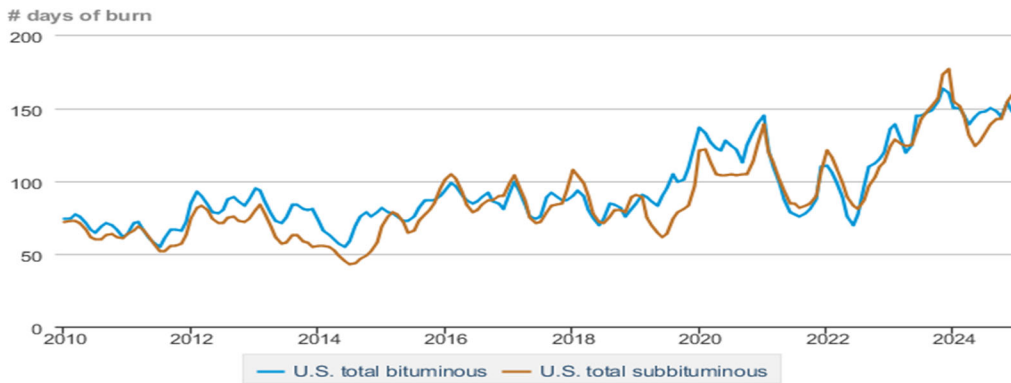
Average weekly coal commodity spot prices dollars per short ton

	Week ending					Week ago change
	01/31/25	02/07/25	02/14/25	02/21/25	02/28/25	
Central Appalachia 12,500 Btu, 1.2 SO ₂	\$76.50	\$76.50	\$76.50	\$76.00	\$76.00	\$0.00
Northern Appalachia 13,000 Btu, < 3.0 SO ₂	\$51.00	\$50.00	\$50.00	\$50.00	\$50.00	\$0.00
Illinois Basin 11,800 Btu, 5.0 SO ₂	\$44.50	\$44.50	\$44.50	\$44.00	\$44.00	\$0.00
Powder River Basin 8,800 Btu, 0.8 SO ₂	\$14.20	\$14.20	\$14.20	\$14.20	\$14.20	\$0.00

Data source: With permission, S&P Global

Source: Energy Information Administration (with permission from S&P Global), *Coal Market Report*

Days of burn by non-lignite coal rank, January 2010 - December 2024



 Data source: U.S. Energy Information Administration

Source: Energy Information Administration, *Electricity Monthly Update Report*

Temperature – heating & cooling degree days (week ending Feb 20)

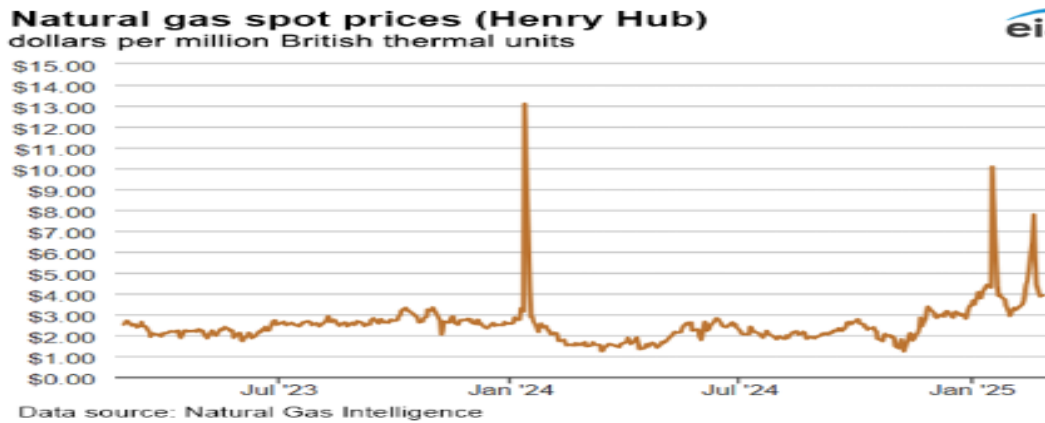
Region	HDDs			CDDs		
	Current total	Deviation from normal	Deviation from last year	Current total	Deviation from normal	Deviation from last year
New England	286	31	28	0	0	0
Middle Atlantic	267	25	22	0	0	0
E N Central	343	82	101	0	0	0
W N Central	405	141	167	0	0	0
South Atlantic	186	29	31	8	0	5
E S Central	208	55	52	0	-1	0
W S Central	181	77	71	0	-4	0
Mountain	222	25	25	0	-1	0
Pacific	106	5	-4	0	0	0
United States	247	52	57	1	-1	1

Data source: National Oceanic and Atmospheric Administration
Note: HDDs=heating degree days; CDDs=cooling degree days

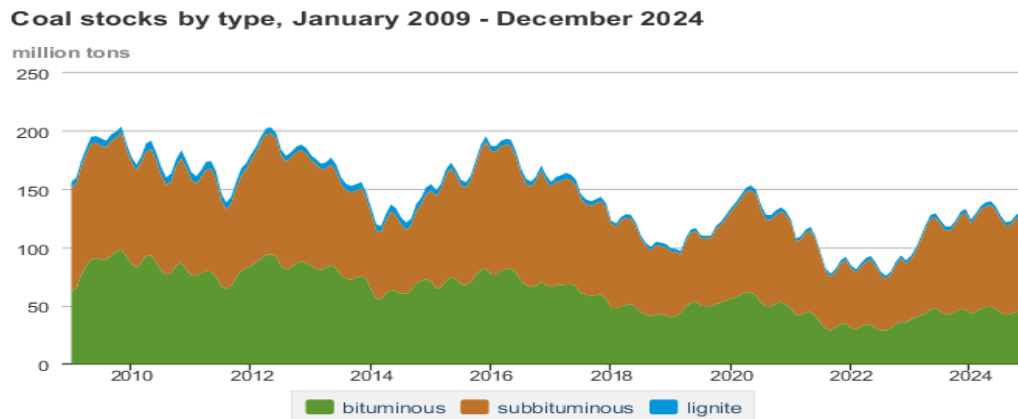
Source: Energy Information Administration, *Natural Gas Weekly Update*.

U.S. Production of Selected Mineral Commodities	2024 Year to Date - 3rd Quarter	2023 Year to Date - 3rd Quarter	Percent Change
Aluminum, secondary (000 Mt.)	670.0	686.0	-2%
Cement (Mil. Mt.)	62.5	66.9	-7%
Copper (000 Mt.)	777.0	835.0	-7%
Gold (Mt.)	118.0	124.0	-5%
Gypsum (Mil. Mt.)	14.2	14.0	1%
Iron Ore (Mil. Mt.)	34.6	32.9	5%
Lead (000 Mt.)	217.0	200.0	9%
Molybdenum (000 Mt.)	25.1	25.0	0%
Palladium (Mt.)	8.4	7.5	12%
Phosphate rock (Mil. Mt.)	14.9	14.9	0%
Platinum (Mt.)	2.5	2.2	14%
Sand & gravel, construction (Mil. Mt.)	684.0	731.0	-6%
Silver (Mt.)	771.0	764.0	1%
Soda ash (Mil. Mt.)	8.7	8.1	7%
Stone, crushed (Mil. Mt.)	1,110.0	1,170.0	-5%
Zinc (000 Mt.)	564.0	544.0	4%

Source: U.S. Geological Survey, Mineral Industry Surveys. Percent change based on USGS rounded numbers. 2024 data are preliminary estimates. W - withheld, N/A - not available



Source: Energy Information Administration, *Natural Gas Weekly*.



Source: Energy Information Administration, *Electricity Monthly Update*

Mining-Related Commodity Prices

Commodity Price - Snapshot		
Metals Prices	Date	Price
Cobalt Spot Price (\$/lb)	3/3/25	\$10.87
Copper Spot Price (\$/lb)	3/4/25	\$4.53
Gold Spot Price (\$/ounce)	3/4/25	\$2,910.82
Lead Spot Price (\$/lb)	3/4/25	\$0.91
Lithium Spot Price (\$/kg)	3/4/25	\$10.36
Molybdenum Spot Price (\$/kg)	3/4/25	\$64.61
Nickel Spot Price (\$/lb)	3/4/25	\$7.23
Silver Spot Price (\$/ounce)	3/4/25	\$31.83
Steel HRC Price (\$/mt)	3/4/25	\$915.15
Steel Rebar Price (\$/mt)	3/4/25	\$452.15
Zinc Spot Price (\$/lb)	3/4/25	\$1.27
Energy Prices	Date	Price
Coal Price - Australian Premium Coking Coal Futures (\$/mt)	3/4/25	\$185.50
Coal Spot Price - Central Appalachia (\$/st)	2/28/25	\$76.00
Coal Spot Price - Newcastle futures (\$/mt)	3/4/25	\$101.52
Coal Spot Price - Rotterdam futures (\$/mt)	3/4/25	\$96.50
Natural Gas Spot Price - Henry Hub (\$/mmbtu)	2/26/25	\$3.91
Uranium Spot Price (\$/lb)	3/3/25	\$65.45

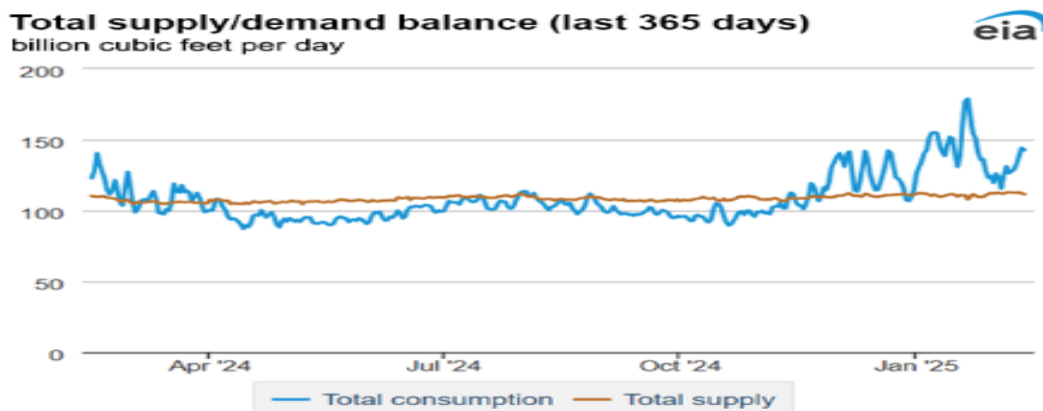
Sources: publically available data from eia.gov, dailymetalprice.com, tradingeconomics.com, sgxgroup.com, investing.com

EIA Working Natural Gas Underground Storage

Region	Stocks billion cubic feet (Bcf)		
	2025-02-21	2025-02-14	change
East	362	419	-57
Midwest	424	494	-70
Mountain	168	182	-14
Pacific	198	208	-10
South Central	688	799	-111
Total	1,840	2,101	-261

Data source: U.S. Energy Information Administration Form EIA-912, *Weekly Underground Natural Gas Storage Report*
 Note: Totals may not equal sum of components because of independent rounding.

Source: Energy Information Administration, *Natural Gas Weekly Update*



Data source: S&P Global Commodity Insights

Source: Energy Information Administration, *Natural Gas Weekly Update*

USGS Cobalt – U.S. Trade, Reported Stocks and Listed Prices

Cobalt - December 2024	Dec-24	Year to Date
U.S. Imports for Consumption - Metals (mt)	1,060	8,990
U.S. Exports of Cobalt Materials - Cobalt Content (mt)	409	4,720
Reported LME Stocks of Cobalt Metal (mt)	128	-
Listed Prices by Type (\$/lb): US Spot & LME Cash Avg.	15.56	10.91

Source: USGS, Mineral Industry Survey, Cobalt in December 2024, March 2025

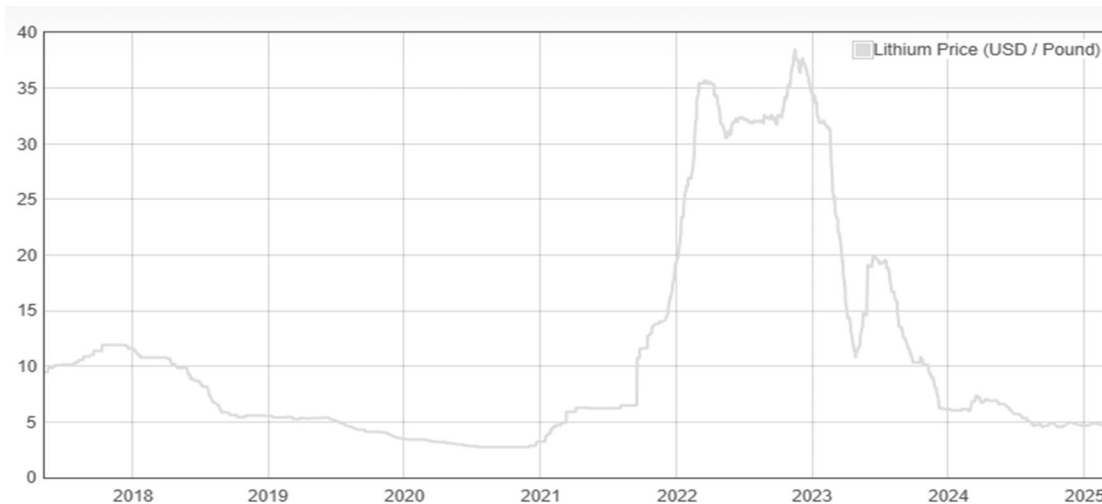
Cobalt and Lithium Prices

Cobalt Prices (US\$/pound):



Source: Dailymetalprice.com - <https://www.dailymetalprice.com/metalpricecharts.php?c=co&u=lb&d=0>

Lithium Prices (US\$/pound):



Source: Dailymetalprice.com - <https://www.dailymetalprice.com/metalpricecharts.php>