



# **NATIONAL MINING ASSOCIATION**

## **WEEKLY STATISTICAL SUMMARY**

**March 14, 2025 Edition**  
(Data for Week Ending March 8, 2025)

Prepared by  
**National Mining Association**

101 Constitution Avenue NW, Suite 500 East  
Washington, DC 20001  
(202) 463-2600  
[www.nma.org](http://www.nma.org)



# NMA WEEKLY STATISTICAL SUMMARY

Vol. 62, No. 10 | Dated 03/14/25

## COAL PRODUCTION, CONSUMPTION & TRADE

	Week Ended			* Cumulative Jan 1 to		
	3/08/25	3/09/24	% Chg	3/08/25	3/08/24	% Chg
EIA Coal Production (000 Tons):						
Week Ended/Year to Date	10,288	9,785	5.1%	94,534	99,412	-4.9%
52 Weeks Ended	505,979	563,271	-10.2%			
AAR Coal Rail Cars Loaded:	57,977	55,963	3.6%	532,929	569,974	-6.5%
EIA Coal Production Month Ended - February	<b>Feb 25/24</b> 38,761	<b>Feb 25/24</b> 44,011	<b>% Chg</b> -11.9%	<b>Jan - Feb 25/24</b> 82,865	<b>Jan - Feb 25/24</b> 88,063	<b>% Chg</b> -5.9%

### U.S. Department of Commerce Coal Trade (000 Tons)

	January 25/24		% Chg	Jan - Jan 25/24		% Chg
	Jan 25/24	Jan 24/24		Jan 25/24	Jan 24/24	
Coal Exports:						
Metallurgical	3,765	3,945	-4.6%	3,765	3,945	-4.6%
Steam Bit. *	3,903	4,419	-11.7%	3,903	4,419	-11.7%
Lignite	10	10	0.0%	10	10	0.0%
Anthracite	<u>57</u>	<u>47</u>	21.3%	<u>57</u>	<u>47</u>	21.3%
Total	7,735	8,421	-8.1%	7,735	8,421	-8.1%
Coal Imports:	245	94	160.6%	245	94	160.6%

	Week Ended			Cumulative Week 1 to		
	3/08/25	3/09/24	% Chg	3/08/25	3/09/24	% Chg
EI Electric Total Output (Mil. Kwh)	77,360	71,741	7.8%	843,919	788,184	7.1%
EI Coal Region Output (Mil. Kwh)	67,176	61,525	9.2%	733,819	681,730	7.6%
AISI Raw Steel Output (000 Tons)	1,671	1,696	-1.5%	15,850	16,055	-1.3%

## EIA AVERAGE COAL & NATURAL GAS SPOT PRICES

Dollars Per Short Ton

Average Coal Spot Prices (\$/Short Ton)	Week Ending			Natural Gas Spot Prices (\$/MMBtu)	
	03/07/25	02/28/25	% Chg	Wed.	03/05/25
Central App, 12,500 Btu, 1.2 SO <sub>2</sub>	\$76.00	\$76.00	0.0%	Henry Hub	4.40
Northern App, 13,000 Btu, < 3.0 SO <sub>2</sub>	50.00	50.00	0.0%	New York	4.10
Illinois Basin, 11,800, 5.0 SO <sub>2</sub>	44.00	44.00	0.0%	Chicago	4.00
Powder River Basin, 8,800 Btu 0.8 SO <sub>2</sub>	14.20	14.20	0.0%	Cal.Comp.Avg.	3.74

Coal exports and Imports are "as reported" (not revised); \*Steam bit. excludes lignite & anthracite. All data in this report are preliminary and subject to revision. r/ revised.

Sources: EIA; Edison Electric Institute; American Iron & Steel Institute; Association of American Railroads; Dept. of Commerce; S&P Global



<b>EIA Estimated Weekly U.S. Coal Production Overview</b>									
Coal-Producing Region & State (thousand short tons)	Week Ended			Year to Date			52 Weeks Ended		
	3/8/2025 (week 10)	3/1/2025 (week 9)	3/9/2024 (week 10)	3/8/2025	3/8/2024	% Change	3/8/2025	3/9/2024	% Change
Alabama	336	358	270	3,231	2,747	17.6	14,832	12,679	17.0
Alaska	21	22	23	200	231	-13.6	969	1,022	-5.2
Colorado	276	320	259	2,819	2,628	7.3	12,549	12,869	-2.5
Illinois	744	805	733	7,164	7,451	-3.8	33,980	36,963	-8.1
Indiana	413	419	413	3,752	4,198	-10.6	19,647	22,832	-13.9
<b>Kentucky total</b>	<b>508</b>	<b>520</b>	<b>497</b>	<b>4,664</b>	<b>5,046</b>	<b>-7.6</b>	<b>23,827</b>	<b>27,393</b>	<b>-13.0</b>
Eastern (KY)	211	214	203	1,915	2,065	-7.3	10,121	11,875	-14.8
Western (KY)	298	307	293	2,749	2,981	-7.8	13,706	15,518	-11.7
Louisiana	5	5	5	46	54	-15.2	256	284	-9.9
Maryland	28	29	26	262	266	-1.7	1,314	1,301	1.0
Mississippi	42	39	20	349	207	68.3	2,180	2,438	-10.6
Missouri	3	4	3	32	28	12.3	150	141	6.4
Montana	530	559	486	4,951	4,934	0.4	26,938	28,707	-6.2
New Mexico	140	139	135	1,264	1,368	-7.5	7,078	7,732	-8.5
North Dakota	574	576	502	5,187	5,102	1.7	25,435	24,039	5.8
Ohio	40	37	36	340	367	-7.4	1,763	1,853	-4.9
Oklahoma	s	s	s	s	s	123.0	s	2	-100.0
<b>Pennsylvania total</b>	<b>844</b>	<b>879</b>	<b>754</b>	<b>7,819</b>	<b>7,656</b>	<b>2.1</b>	<b>40,897</b>	<b>42,177</b>	<b>-3.0</b>
Anthracite (PA)	66	72	59	642	595	7.8	3,078	3,016	2.1
Bituminous (PA)	778	807	695	7,177	7,060	1.6	37,819	39,161	-3.4
Texas	227	226	208	2,003	2,110	-5.1	12,183	13,104	-7.0
Utah	133	139	142	1,230	1,445	-14.9	7,231	6,807	6.2
Virginia	208	196	176	1,775	1,784	-0.5	9,689	10,062	-3.7
<b>West Virginia total</b>	<b>1,694</b>	<b>1,706</b>	<b>1,515</b>	<b>15,373</b>	<b>15,396</b>	<b>-0.1</b>	<b>79,116</b>	<b>82,914</b>	<b>-4.6</b>
Northern (WV)	853	835	748	7,533	7,600	-0.9	40,057	43,113	-7.1
Southern (WV)	840	871	767	7,840	7,795	0.6	39,058	39,802	-1.9
Wyoming	3,522	3,648	3,583	32,075	36,396	-11.9	185,944	227,952	-18.4
<b>Appalachian total</b>	<b>3,361</b>	<b>3,419</b>	<b>2,981</b>	<b>30,714</b>	<b>30,280</b>	<b>1.4</b>	<b>157,732</b>	<b>162,861</b>	<b>-3.1</b>
<b>Interior total</b>	<b>1,731</b>	<b>1,805</b>	<b>1,676</b>	<b>16,094</b>	<b>17,029</b>	<b>-5.5</b>	<b>82,103</b>	<b>91,282</b>	<b>-10.1</b>
<b>Western total</b>	<b>5,196</b>	<b>5,404</b>	<b>5,129</b>	<b>47,726</b>	<b>52,103</b>	<b>-8.4</b>	<b>266,144</b>	<b>309,127</b>	<b>-13.9</b>
<b>East of Mississippi River</b>	<b>4,857</b>	<b>4,989</b>	<b>4,441</b>	<b>44,728</b>	<b>45,117</b>	<b>-0.9</b>	<b>227,246</b>	<b>240,613</b>	<b>-5.6</b>
<b>West of Mississippi River</b>	<b>5,431</b>	<b>5,638</b>	<b>5,344</b>	<b>49,807</b>	<b>54,295</b>	<b>-8.3</b>	<b>278,732</b>	<b>322,657</b>	<b>-13.6</b>
<b>Bituminous and lignite</b>	<b>10,222</b>	<b>10,556</b>	<b>9,727</b>	<b>93,892</b>	<b>98,817</b>	<b>-5.0</b>	<b>502,901</b>	<b>560,255</b>	<b>-10.2</b>
<b>Anthracite</b>	<b>66</b>	<b>72</b>	<b>59</b>	<b>642</b>	<b>595</b>	<b>7.8</b>	<b>3,078</b>	<b>3,016</b>	<b>2.1</b>
<b>U.S. total</b>	<b>10,288</b>	<b>10,627</b>	<b>9,785</b>	<b>94,534</b>	<b>99,412</b>	<b>-4.9</b>	<b>505,979</b>	<b>563,271</b>	<b>-10.2</b>
Railroad cars loaded	57,977	60,073	55,963	532,929	569,974	-6.5	2,914,010	3,335,649	-12.6

Source: Energy Information Administration



# Weekly Electric Output

Volume 93 No. 10

**OUTPUT FOR WEEK ENDED - Mar 08, 2025**

The net available amount of electric energy distributed by the Total Electric Utility Industry+ for the week ended Saturday, **Mar 08, 2025** was **77,360** gigawatthours (GWh), according to the Edison Electric Institute.

**WEEKLY ELECTRIC OUTPUT BY GEOGRAPHIC DIVISION**

(48 CONTIGUOUS STATES)

	Week Ended March 08		52 Weeks Ended March 08	
	GWh Output	% Increase Over Corresponding Week of 2024	GWh Output	% Increase Over Corresponding Week of 2024
New England	2,231	8.55 %	114,560	2.86 %
Mid-Atlantic	7,949	10.34 %	419,903	3.67 %
Central Industrial	12,732	11.75 %	662,263	3.63 %
West Central	6,612	14.54 %	337,433	0.26 %
Southeast	19,138	9.99 %	1,051,144	3.37 %
South Central	15,209	4.80 %	910,341	4.28 %
Rocky Mountain	5,536	5.55 %	306,470	4.53 %
Pacific Northwest	3,219	-9.69 %	160,875	1.31 %
Pacific Southwest	4,734	3.01 %	274,417	3.02 %
<b>Total United States</b>	<b>77,360</b>	<b>7.83 %</b>	<b>4,237,406</b>	<b>3.35 %</b>

**WEEKLY ELECTRIC OUTPUT IN PREVIOUS WEEKS--GWh**

Week Ended	2025	Week Ended	2024	% Inc. (25/24)	52 Weeks Ended	2025	% Inc. (25/24)
Feb 15	84,714	Feb 17	76,416	10.86 %	Feb 15	4,215,106	2.79 %
Feb 22	90,673	Feb 24	75,613	19.92 %	Feb 22	4,230,167	3.13 %
Mar 01	76,865	Mar 02	75,244	2.15 %	Mar 01	4,231,788	3.16 %
Mar 08	77,360	Mar 09	71,741	7.83 %	Mar 08	4,237,406	3.35 %
<b>Mar 08</b>	<b>843,919</b>	<b>Mar 09</b>	<b>788,184</b>	<b>7.07 %</b>	<b>YEAR TO DATE, FIRST 10 WEEKS</b>		

**EI WEEKLY ELECTRIC OUTPUT BY GEOGRAPHIC DIVISION  
(48 CONTIGUOUS STATES)**

	Week Ended			NMA CUMULATIVE JANUARY WEEK ONE TO			52 Weeks Ended		
	8-Mar 2025 GWh Output	9-Mar 2024 GWh Output	% Increase Over Corresponding Week	8-Mar 2025 GWh Output	9-Mar 2024 GWh Output	% Increase Over Corresponding Week	8-Mar 2025 GWh Output	9-Mar 2024 GWh Output	% Increase Over Corresponding Week
<b>New England</b>	2,231	2,056	8.5%	<b>24,574</b>	<b>22,968</b>	<b>7.0%</b>	114,560	111,364	2.9%
<b>Mid-Atlantic</b>	7,949	7,204	10.3%	<b>86,970</b>	<b>81,000</b>	<b>7.4%</b>	419,903	405,030	3.7%
<b>Central Industrial</b>	12,732	11,393	11.8%	<b>137,868</b>	<b>128,567</b>	<b>7.2%</b>	662,263	639,084	3.6%
<b>West Central</b>	6,612	5,772	14.6%	<b>67,709</b>	<b>63,907</b>	<b>5.9%</b>	337,433	336,553	0.3%
<b>Southeast</b>	19,138	17,399	10.0%	<b>213,094</b>	<b>197,848</b>	<b>7.7%</b>	1,051,144	1,016,845	3.4%
<b>South Central</b>	15,209	14,512	4.8%	<b>170,111</b>	<b>154,304</b>	<b>10.2%</b>	910,341	872,975	4.3%
<b>Rocky Mountain</b>	5,536	5,245	5.5%	<b>58,067</b>	<b>56,104</b>	<b>3.5%</b>	306,470	293,199	4.5%
<b>Pacific Northwest</b>	3,219	3,565	-9.7%	<b>37,057</b>	<b>35,888</b>	<b>3.3%</b>	160,875	158,798	1.3%
<b>Pacific Southwest</b>	4,734	4,596	3.0%	<b>48,467</b>	<b>47,598</b>	<b>1.8%</b>	274,417	266,385	3.0%
<b>Total United States <sup>1/</sup></b>	<b>77,360</b>	<b>71,742</b>	<b>7.8%</b>	<b>843,917</b>	<b>788,184</b>	<b>7.1%</b>	4,237,406	4,100,233	3.3%
<b>Coal Regions Only <sup>2/</sup></b>	67,176	61,525	9.2%	<b>733,819</b>	<b>681,730</b>	<b>7.6%</b>	3,687,554	3,563,686	3.5%

**Notes:** EEI output data are an estimate of electricity load made available for distribution derived as weekly net generation + purchases from non-utilities + net imports - exports - sales for resale. It is not meant to be a measure of electricity generation for the U.S. EEI survey data represent the majority of national distribution (large utilities, large government power projects, some independent and large municipal power projects). The remaining segment of the industry (smaller producers) is estimated. Non-utility generation is captured via direct sales to utilities.

<sup>1/</sup> Excludes Alaska and Hawaii

<sup>2/</sup> Excludes New England and Pacific regions

SOURCE: Edison Electric Institute (EEI), *Weekly Electric Output Report*.

AMERICAN IRON AND STEEL INSTITUTE  
 25 Massachusetts Avenue, NW, Suite 800  
 Washington, D.C. 20001

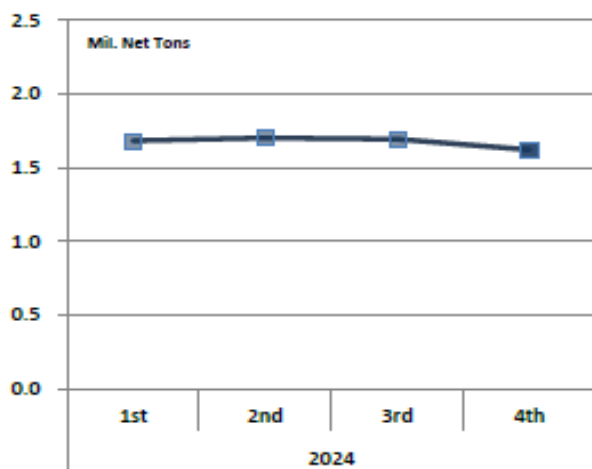
March 10, 2025

**ESTIMATED WEEKLY RAW STEEL \* PRODUCTION**

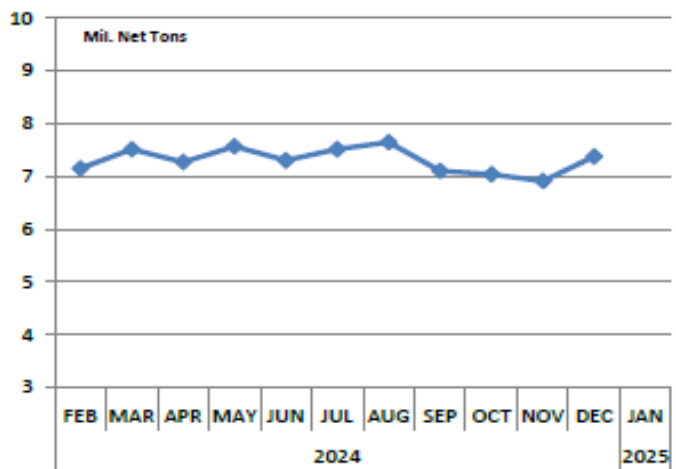
<u>Period</u>	<u>Thousand Net Tons</u>	<u>Percent Change from Previous Period</u>	<u>Percent Capability Utilization**</u>	<u>Production by District</u>			
				<u>Week Ending</u>			
<u>Week Ending</u>				<u>Mar 8</u>	<u>Mar 1</u>		
				North East	128	122	
				Great Lakes	472	464	
				Midwest	237	229	
				Southern	762	763	
				Western	72	63	
				<b>Total</b>	<b>1,671</b>	<b>1,641</b>	
<b><u>Year-to-Date +</u></b>							
Mar 8, 2025	1,671	1.8	75.0				
Mar 8, 2024	1,696	-1.5	76.4				
Mar 1, 2025	1,641	-1.1	73.7				
Mar 8, 2025	15,850	-1.3	74.4				
Mar 8, 2024	16,055	-	75.8				

\*Raw steel production tonnage included in this report is estimated based on a sampling of steel producers (50% of domestic producers). Therefore, this report should be used primarily to assess production trends. The AISI production report "AIS 7," produced monthly and available by subscription, provides a more accurate summary of steel production based on data supplied by companies representing approximately 75% of U.S. production capacity plus includes revisions for previous months.

**Average Weekly Raw Steel Production**



**Monthly Raw Steel Production**



\*Steel in the first solid state after melting suitable for further processing or sale, including ingots, steel for castings and strand or pressure cast blooms, slabs or other product forms. \*\* Based on tonnage capability to produce raw steel for a sustained full order book.

**U.S. Rail Traffic<sup>1</sup>**  
**Week 10, 2025 – Ended March 8, 2025**

	This Week		Year-To-Date		
	Cars	vs 2024	Cumulative	Avg/wk <sup>2</sup>	vs 2024
<b>Total Carloads</b>	<b>219,457</b>	<b>2.6%</b>	<b>2,088,739</b>	<b>208,874</b>	<b>-1.5%</b>
Chemicals	33,079	-2.0%	326,374	32,637	2.1%
Coal	57,977	5.1%	557,288	55,729	-4.0%
Farm Products excl. Grain, and Food	16,945	1.7%	170,985	17,099	3.4%
Forest Products	8,188	-2.0%	82,378	8,238	0.9%
Grain	21,710	12.5%	204,597	20,460	1.8%
Metallic Ores and Metals	17,939	-4.6%	176,044	17,604	-8.7%
Motor Vehicles and Parts	16,396	5.4%	134,920	13,492	-3.0%
Nonmetallic Minerals	28,407	-0.4%	248,759	24,876	-2.9%
Petroleum and Petroleum Products	9,919	-0.2%	103,028	10,303	2.9%
Other	8,897	14.3%	84,366	8,437	0.4%
<b>Total Intermodal Units</b>	<b>277,955</b>	<b>7.7%</b>	<b>2,714,285</b>	<b>271,429</b>	<b>8.4%</b>
<b>Total Traffic</b>	<b>497,412</b>	<b>5.4%</b>	<b>4,803,024</b>	<b>480,302</b>	<b>3.8%</b>

<sup>1</sup> Excludes U.S. operations of CPKC, CN and GMXT.

<sup>2</sup> Average per week figures may not sum to totals as a result of independent rounding.

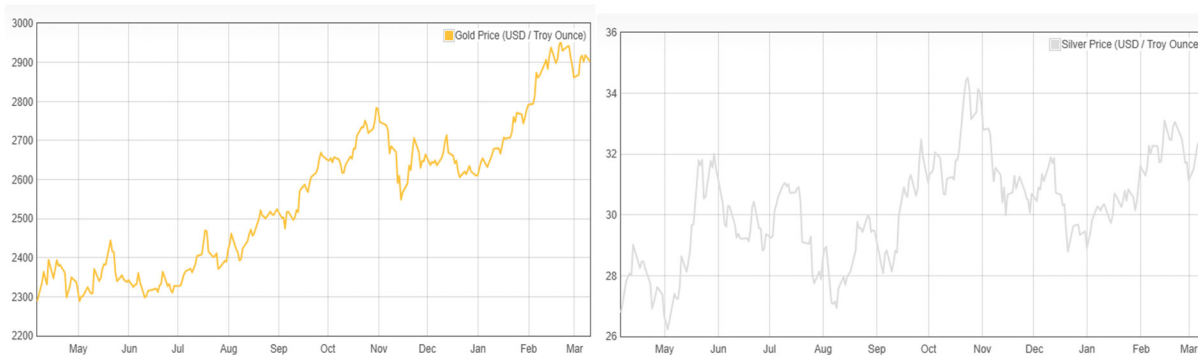
Source: AAR website - <https://www.aar.org/Pages/NEWS-and-EVENTS.aspx>

**Copper, Gold and Silver Prices**

Copper Prices:

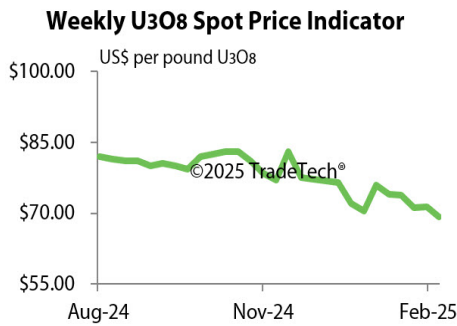


Gold and Silver Prices:



Source: Dailymetalprice.com - <https://www.dailymetalprice.com/metalprices.php>

### Trade Tech's and UX's Uranium Price Indicators



Sources: Trade Tech, Uranium Info Website – [www.uranium.info](http://www.uranium.info) ; Source: Ux Consulting Co., LLC – <http://www.uxc.com>

### Coal stocks and average number of days of burn for non-lignite coal by region (electric power sector)

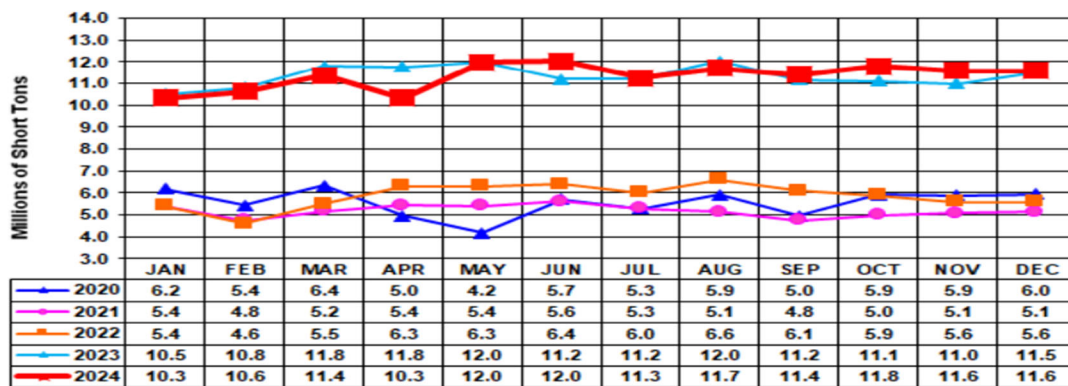
Zone	Coal	December 2024		December 2023		% Change of Stocks	November 2024		% Change of Stocks
		Stocks (1000 tons)	Days of Burn	Stocks (1000 tons)	Days of Burn		Stocks (1000 tons)	Days of Burn	
Northeast	Bituminous	1,847	145	2,616	339	-29.4%	2,127	166	-13.1%
	Subbituminous	-	-	-	-	-	-	-	-
South	Bituminous	19,586	142	22,697	160	-13.7%	20,806	151	-5.9%
	Subbituminous	6,145	101	6,922	130	-11.2%	6,284	102	-2.2%
Midwest	Bituminous	11,846	146	12,578	145	-5.8%	12,472	145	-5.0%
	Subbituminous	32,647	156	35,034	182	-6.8%	33,699	154	-3.1%
West	Bituminous	2,928	206	2,731	189	7.2%	3,145	221	-6.9%
	Subbituminous	31,972	177	32,507	182	-1.6%	31,176	172	2.6%
U.S. Total	Bituminous	36,208	148	40,623	161	-10.9%	38,550	154	-6.1%
	Subbituminous	70,763	159	74,463	177	-5.0%	71,158	155	-0.6%

Source: U.S. Energy Information Administration

**NOTE:** Stockpile levels shown above reflect a sample of electric power sector plants, which were used to create the days of burn statistics. These levels will not equal total electric power sector stockpile levels.

Source: Energy Information Administration, Electric Monthly Update

### Coal and Coke Monthly Indicator for Internal U.S. Waterways



For the Internal U.S. Waterway Monthly Indicators, estimates for the most recent month are based on lock performance management data. The estimates will be superseded by actual data as it becomes available.

Source: Waterborne Commerce Statistics Center

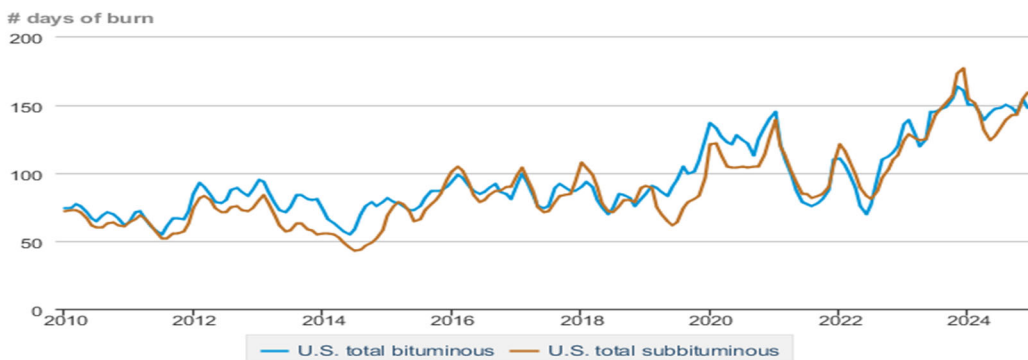
### Average weekly coal commodity spot prices dollars per short ton

	Week ending					Week ago change
	02/07/25	02/14/25	02/21/25	02/28/25	03/07/25	
Central Appalachia 12,500 Btu, 1.2 SO <sub>2</sub>	\$76.50	\$76.50	\$76.00	\$76.00	\$76.00	\$0.00
Northern Appalachia 13,000 Btu, < 3.0 SO <sub>2</sub>	\$50.00	\$50.00	\$50.00	\$50.00	\$50.00	\$0.00
Illinois Basin 11,800 Btu, 5.0 SO <sub>2</sub>	\$44.50	\$44.50	\$44.00	\$44.00	\$44.00	\$0.00
Powder River Basin 8,800 Btu, 0.8 SO <sub>2</sub>	\$14.20	\$14.20	\$14.20	\$14.20	\$14.20	\$0.00

Data source: With permission, S&P Global

Source: Energy Information Administration (with permission from S&P Global), *Coal Market Report*

### Days of burn by non-lignite coal rank, January 2010 - December 2024



eia Data source: U.S. Energy Information Administration

Source: Energy Information Administration, *Electricity Monthly Update Report*

### Temperature – heating & cooling degree days (week ending Feb 27)

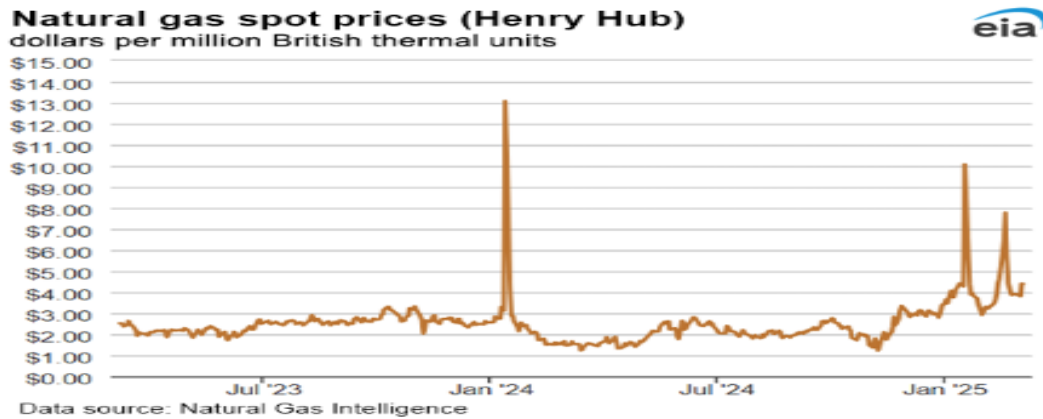
Region	HDDs			CDDs		
	Current total	Deviation from normal	Deviation from last year	Current total	Deviation from normal	Deviation from last year
New England	221	-21	-4	0	0	0
Middle Atlantic	205	-25	3	0	0	0
E N Central	227	-18	66	0	0	0
W N Central	219	-26	71	0	0	0
South Atlantic	146	1	18	5	-3	2
E S Central	158	18	68	0	-2	0
W S Central	117	26	85	3	-1	-14
Mountain	156	-30	-2	2	1	2
Pacific	58	-40	36	0	-1	0
United States	166	-17	29	1	-2	-1

Data source: National Oceanic and Atmospheric Administration  
Note: HDDs=heating degree days; CDDs=cooling degree days

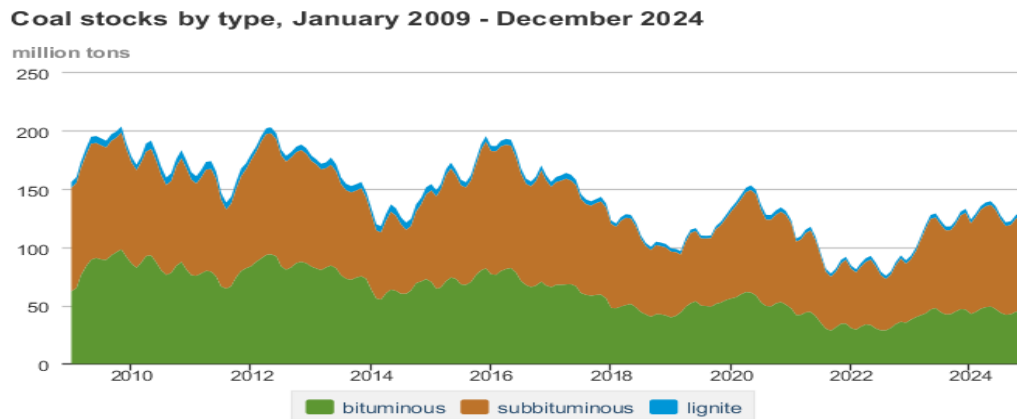
Source: Energy Information Administration, *Natural Gas Weekly Update*.

U.S. Production of Selected Mineral Commodities	2024 Year to Date - 3rd Quarter	2023 Year to Date - 3rd Quarter	Percent Change
Aluminum, secondary (000 Mt.)	670.0	686.0	-2%
Cement (Mil. Mt.)	62.5	66.9	-7%
Copper (000 Mt.)	777.0	835.0	-7%
Gold (Mt.)	118.0	124.0	-5%
Gypsum (Mil. Mt.)	14.2	14.0	1%
Iron Ore (Mil. Mt.)	34.6	32.9	5%
Lead (000 Mt.)	217.0	200.0	9%
Molybdenum (000 Mt.)	25.1	25.0	0%
Palladium (Mt.)	8.4	7.5	12%
Phosphate rock (Mil. Mt.)	14.9	14.9	0%
Platinum (Mt.)	2.5	2.2	14%
Sand & gravel, construction (Mil. Mt.)	684.0	731.0	-6%
Silver (Mt.)	771.0	764.0	1%
Soda ash (Mil. Mt.)	8.7	8.1	7%
Stone, crushed (Mil. Mt.)	1,110.0	1,170.0	-5%
Zinc (000 Mt.)	564.0	544.0	4%

Source: U.S. Geological Survey, Mineral Industry Surveys. Percent change based on USGS rounded numbers. 2024 data are preliminary estimates. W - withheld, N/A - not available



Source: Energy Information Administration, *Natural Gas Weekly*.



Data source: U.S. Energy Information Administration

Source: Energy Information Administration, *Electricity Monthly Update*

### Mining-Related Commodity Prices

Commodity Price - Snapshot		
Metals Prices	Date	Price
Cobalt Spot Price (\$/lb)	3/11/25	\$12.58
Copper Spot Price (\$/lb)	3/12/25	\$4.81
Gold Spot Price (\$/ounce)	3/12/25	\$2,936.56
Lead Spot Price (\$/lb)	3/12/25	\$0.94
Lithium Spot Price (\$/kg)	3/12/25	\$10.34
Molybdenum Spot Price (\$/kg)	3/12/25	\$63.36
Nickel Spot Price (\$/lb)	3/12/25	\$7.54
Silver Spot Price (\$/ounce)	3/12/25	\$33.25
Steel HRC Price (\$/mt)	3/12/25	\$940.40
Steel Rebar Price (\$/mt)	3/12/25	\$445.38
Zinc Spot Price (\$/lb)	3/12/25	\$1.33
Energy Prices	Date	Price
Coal Price - Australian Premium Coking Coal Futures (\$/mt)	3/11/25	\$181.00
Coal Spot Price - Central Appalachian (\$/st)	3/7/25	\$76.00
Coal Spot Price - Newcastle futures (\$/mt)	3/11/25	\$104.95
Coal Spot Price - Rotterdam futures (\$/mt)	3/10/25	\$99.00
Natural Gas Spot Price - Henry Hub (\$/mmbtu)	3/5/25	\$4.40
Uranium Spot Price (\$/lb)	3/11/25	\$63.95

Sources: publically available data from eia.gov, dailymetalprice.com, tradingeconomics.com, sgxgroup.com, investing.com

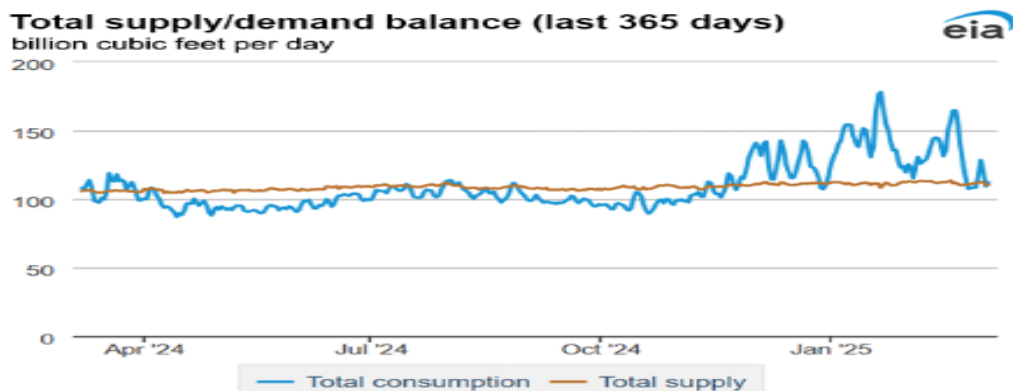
### EIA Working Natural Gas Underground Storage

Region	Stocks billion cubic feet (Bcf)		
	2025-02-28	2025-02-21	change
East	340	362	-22
Midwest	396	424	-28
Mountain	166	168	-2
Pacific	199	198	1
South Central	658	688	-30
Total	1,760	1,840	-80

Data source: U.S. Energy Information Administration Form EIA-912, *Weekly Underground Natural Gas Storage Report*

Note: Totals may not equal sum of components because of independent rounding.

Source: Energy Information Administration, *Natural Gas Weekly Update*



Data source: S&P Global Commodity Insights

Source: Energy Information Administration, *Natural Gas Weekly Update*

### USGS Cobalt – U.S. Trade, Reported Stocks and Listed Prices

Cobalt - December 2024	Dec-24	Year to Date
U.S. Imports for Consumption - Metals (mt)	1,060	8,990
U.S. Exports of Cobalt Materials - Cobalt Content (mt)	409	4,720
Reported LME Stocks of Cobalt Metal (mt)	128	-
Listed Prices by Type (\$/lb): US Spot & LME Cash Avg.	15.56	10.91

Source: USGS, Mineral Industry Survey, Cobalt in December 2024, March 2025

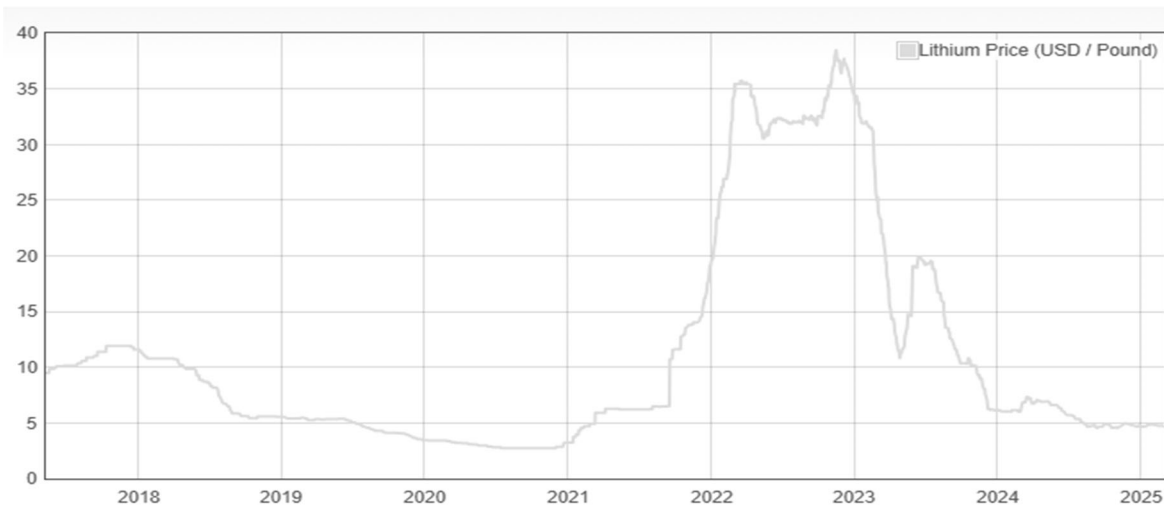
### Cobalt and Lithium Prices

#### Cobalt Prices (US\$/pound):



Source: Dailymetalprice.com - <https://www.dailymetalprice.com/metalpricecharts.php?c=co&u=lb&d=0>

#### Lithium Prices (US\$/pound):



Source: Dailymetalprice.com - <https://www.dailymetalprice.com/metalpricecharts.php>