



NATIONAL MINING ASSOCIATION

WEEKLY STATISTICAL SUMMARY

June 13, 2025 Edition
(Data for Week Ending June 7, 2025)

Prepared by
National Mining Association

101 Constitution Avenue NW, Suite 500 East
Washington, DC 20001
(202) 463-2600
www.nma.org



NMA WEEKLY STATISTICAL SUMMARY

Vol. 62, No. 23 | Dated 06/13/25

COAL PRODUCTION, CONSUMPTION & TRADE

	Week Ended			* Cumulative Jan 1 to		
	6/07/25	6/08/24	% Chg	6/07/25	6/07/24	% Chg
EIA Coal Production (000 Tons):						
Week Ended/Year to Date	10,398	9,817	5.9%	232,655	214,698	8.4%
52 Weeks Ended	528,808	533,823	-0.9%			
AAR Coal Rail Cars Loaded:	57,889	54,797	5.6%	1,290,880	1,217,648	6.0%
EIA Coal Production						
Month Ended - May	46,227	39,370	17.4%	219,536	204,950	7.1%
	May 25/24		% Chg	Jan - May 25/24		% Chg

U.S. Department of Commerce Coal Trade (000 Tons)

	April 25/24		% Chg	Jan - Apr 25/24		% Chg
Coal Exports:						
Metallurgical	3,617	3,446	5.0%	16,307	17,773	-8.2%
Steam Bit. *	3,927	3,364	16.7%	15,523	15,573	-0.3%
Lignite	4	6	-33.3%	38	35	8.6%
Anthracite	40	31	29.0%	163	295	-44.7%
Total	7,588	6,847	10.8%	32,031	33,676	-4.9%
Coal Imports:	264	254	3.9%	896	582	54.0%

	Week Ended			Cumulative Week 1 to		
	6/07/25	6/08/24	% Chg	6/07/25	6/08/24	% Chg
EI Electric Total Output (Mil. Kwh)	82,114	84,405	-2.7%	1,813,882	1,749,416	3.7%
EI Coal Region Output (Mil. Kwh)	71,728	74,184	-3.3%	1,576,620	1,519,770	3.7%
AISI Raw Steel Output (000 Tons)	1,785	1,703	4.8%	38,072	38,165	-0.2%

EIA AVERAGE COAL & NATURAL GAS SPOT PRICES

Dollars Per Short Ton

Average Coal Spot Prices (\$/Short Ton)	Week Ending			Natural Gas Spot Prices (\$/MMBtu)	
	06/06/25	05/30/25	% Chg	Wed.	06/04/25
Central App, 12,500 Btu, 1.2 SO ₂	\$79.00	\$79.00	0.0%	Henry Hub	2.82
Northern App, 13,000 Btu, < 3.0 SO ₂	57.00	57.00	0.0%	New York	2.16
Illinois Basin, 11,800, 5.0 SO ₂	46.50	46.50	0.0%	Chicago	2.78
Powder River Basin, 8,800 Btu 0.8 SO ₂	14.30	14.30	0.0%	Cal.Comp.Avg.	2.99

Coal exports and Imports are "as reported" (not revised); *Steam bit. excludes lignite & anthracite. All data in this report are preliminary and subject to revision. r/ revised.

Sources: EIA; Edison Electric Institute; American Iron & Steel Institute; Association of American Railroads; Dept. of Commerce; S&P Global

EIA Estimated Weekly U.S. Coal Production Overview									
Coal-Producing Region & State (thousand short tons)	Week Ended			Year to Date			52 Weeks Ended		
	6/7/2025 (week 23)	5/31/2025 (week 22)	6/8/2024 (week 23)	6/7/2025	6/7/2024	% Change	6/7/2025	6/8/2024	% Change
Alabama	294	387	315	6,572	6,307	4.2	14,607	13,370	9.3
Alaska	20	20	18	475	459	3.4	1,017	1,001	1.6
Colorado	253	266	260	5,565	5,676	-2.0	12,246	12,869	-4.8
Illinois	728	777	707	17,274	15,847	9.0	35,698	35,499	0.6
Indiana	404	408	416	8,876	9,078	-2.2	19,890	21,532	-7.6
Kentucky total	499	499	524	10,864	11,116	-2.3	23,954	26,086	-8.2
Eastern (KY)	209	209	223	4,364	4,624	-5.6	10,010	11,151	-10.2
Western (KY)	290	290	301	6,500	6,492	0.1	13,945	14,934	-6.6
Louisiana	5	6	5	116	110	5.5	270	272	-0.7
Maryland	28	30	26	599	570	5.0	1,347	1,275	5.6
Mississippi	48	47	50	1,013	706	43.6	2,342	2,339	0.1
Missouri	3	4	3	58	65	-10.2	140	142	-1.4
Montana	543	597	501	11,264	10,778	4.5	27,404	27,028	1.4
New Mexico	146	168	154	2,702	3,119	-13.4	6,762	7,281	-7.1
North Dakota	543	617	500	12,464	10,984	13.5	26,829	24,091	11.4
Ohio	38	38	39	815	815	-0.1	1,789	1,807	-1.0
Oklahoma	s	s	.	s	s	-16.9	s	1	-100.0
Pennsylvania total	840	912	793	18,124	16,853	7.5	42,000	40,736	3.1
Anthracite (PA)	59	74	67	1,381	1,358	1.7	3,054	3,111	-1.8
Bituminous (PA)	781	838	726	16,743	15,496	8.0	38,946	37,625	3.5
Texas	244	268	204	5,799	4,516	28.4	13,573	12,327	10.1
Utah	143	183	85	3,657	2,622	39.5	8,488	6,285	35.1
Virginia	216	222	206	4,337	4,111	5.5	9,921	9,500	4.4
West Virginia total	1,714	1,814	1,711	38,162	34,894	9.4	82,382	79,985	3.0
Northern (WV)	917	878	870	20,398	17,449	16.9	43,058	41,073	4.8
Southern (WV)	797	937	840	17,763	17,445	1.8	39,323	38,911	1.1
Wyoming	3,688	3,540	3,301	83,920	76,072	10.3	198,149	210,399	-5.8
Appalachian total	3,339	3,613	3,312	72,973	68,173	7.0	162,055	157,824	2.7
Interior total	1,723	1,799	1,686	39,636	36,814	7.7	85,858	87,046	-1.4
Western total	5,336	5,390	4,820	120,045	109,711	9.4	280,895	288,953	-2.8
East of Mississippi River	4,810	5,135	4,786	106,635	100,296	6.3	233,930	232,128	0.8
West of Mississippi River	5,588	5,667	5,031	126,019	114,402	10.2	294,878	301,695	-2.3
Bituminous and lignite	10,339	10,728	9,750	231,273	213,341	8.4	525,754	530,712	-0.9
Anthracite	59	74	67	1,381	1,358	1.7	3,054	3,111	-1.8
U.S. total	10,398	10,802	9,817	232,655	214,698	8.4	528,808	533,823	-0.9
Railroad cars loaded	57,889	60,123	54,797	1,290,880	1,217,648	6.0	3,024,439	3,140,146	-3.7

Source: Energy Information Administration



Weekly Electric Output

Volume 93 No. 23

OUTPUT FOR WEEK ENDED - Jun 07, 2025

The net available amount of electric energy distributed by the Total Electric Utility Industry+ for the week ended Saturday, **Jun 07, 2025** was **82,114** gigawatthours (GWh), according to the Edison Electric Institute.

WEEKLY ELECTRIC OUTPUT BY GEOGRAPHIC DIVISION

(48 CONTIGUOUS STATES)

	Week Ended June 07		52 Weeks Ended June 07	
	GWh Output	% Increase Over Corresponding Week of 2024	GWh Output	% Increase Over Corresponding Week of 2024
New England	2,006	-5.67 %	114,142	1.75 %
Mid-Atlantic	7,654	-9.89 %	417,207	2.07 %
Central Industrial	12,613	-2.79 %	659,303	2.78 %
West Central	6,219	-2.47 %	337,821	1.32 %
Southeast	19,911	-3.96 %	1,049,963	2.62 %
South Central	19,748	1.49 %	919,919	4.00 %
Rocky Mountain	5,583	-9.22 %	308,095	4.46 %
Pacific Northwest	2,841	4.74 %	161,672	2.10 %
Pacific Southwest	5,539	2.94 %	278,015	4.86 %
Total United States	82,114	-2.71 %	4,246,137	3.01 %

WEEKLY ELECTRIC OUTPUT IN PREVIOUS WEEKS--GWh

Week Ended	2025	Week Ended	2024	% Inc. (25/24)	52 Weeks Ended	2025	% Inc. (25/24)
May 17	75,855	May 18	74,022	2.48 %	May 17	4,253,433	3.67 %
May 24	77,837	May 25	81,411	-4.39 %	May 24	4,249,859	3.35 %
May 31	76,711	Jun 01	78,143	-1.83 %	May 31	4,248,428	3.28 %
Jun 07	82,114	Jun 08	84,405	-2.71 %	Jun 07	4,246,137	3.01 %
Jun 07	1,813,882	Jun 08	1,749,416	3.68 %	YEAR TO DATE, FIRST 23 WEEKS		

EEI WEEKLY ELECTRIC OUTPUT BY GEOGRAPHIC DIVISION (48 CONTIGUOUS STATES)

	Week Ended			NMA CUMULATIVE JANUARY WEEK ONE TO			52 Weeks Ended		
	7-Jun 2025 GWh Output	8-Jun 2024 GWh Output	% Increase Over Corresponding Week	7-Jun 2025 GWh Output	8-Jun 2024 GWh Output	% Increase Over Corresponding Week	7-Jun 2025 GWh Output	8-Jun 2024 GWh Output	% Increase Over Corresponding Week
New England	2,006	2,126	-5.6%	48,988	47,800	2.5%	114,142	112,183	1.7%
Mid-Atlantic	7,654	8,494	-9.9%	177,416	174,141	1.9%	417,207	408,761	2.1%
Central Industrial	12,613	12,975	-2.8%	288,359	282,016	2.2%	659,303	641,466	2.8%
West Central	6,219	6,376	-2.5%	143,881	139,691	3.0%	337,821	333,421	1.3%
Southeast	19,911	20,731	-4.0%	452,345	438,278	3.2%	1,049,963	1,023,185	2.6%
South Central	19,748	19,458	1.5%	389,543	364,156	7.0%	919,919	884,497	4.0%
Rocky Mountain	5,583	6,150	-9.2%	125,076	121,488	3.0%	308,095	294,938	4.5%
Pacific Northwest	2,841	2,713	4.7%	76,388	74,424	2.6%	161,672	158,345	2.1%
Pacific Southwest	5,539	5,381	2.9%	111,882	107,418	4.2%	278,015	265,132	4.9%
Total United States ^{1/}	82,114	84,404	-2.7%	1,813,878	1,749,412	3.7%	4,246,137	4,121,928	3.0%
Coal Regions Only ^{2/}	71,728	74,184	-3.3%	1,576,620	1,519,770	3.7%	3,692,308	3,586,268	3.0%

Notes: EEI output data are an estimate of electricity load made available for distribution derived as weekly net generation + purchases from non-utilities + net imports - exports - sales for resale. It is not meant to be a measure of electricity generation for the U.S. EEI survey data represent the majority of national distribution (large utilities, large government power projects, some independent and large municipal power projects). The remaining segment of the industry (smaller producers) is estimated. Non-utility generation is captured via direct sales to utilities. Data may not match weekly EEI report due to rounding.

^{1/} Excludes Alaska and Hawaii

^{2/} Excludes New England and Pacific regions

SOURCE: Edison Electric Institute (EEI), *Weekly Electric Output Report*.

AMERICAN IRON AND STEEL INSTITUTE
 25 Massachusetts Avenue, NW, Suite 800
 Washington, D.C. 20001

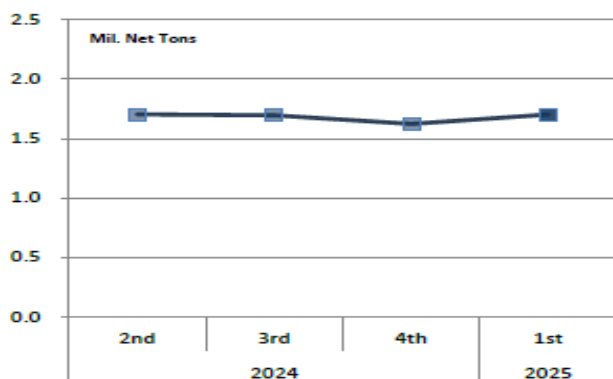
June 9, 2025

ESTIMATED WEEKLY RAW STEEL* PRODUCTION

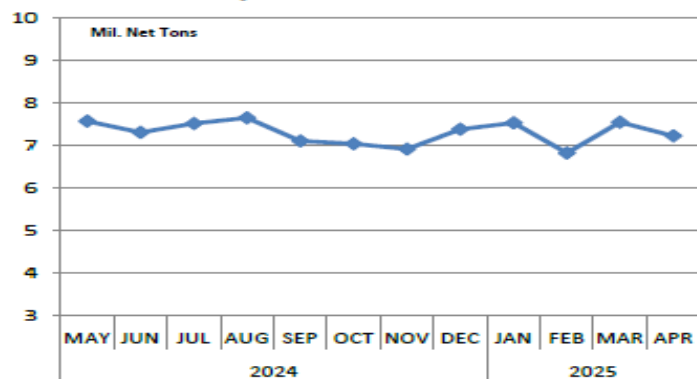
<u>Period</u>	<u>Thousand Net Tons</u>	<u>Percent Change from Previous Period</u>	<u>Percent Capability Utilization**</u>	<u>Production by District</u>		
				<u>Week Ending</u>		
				<u>June 7</u>	<u>May 31</u>	
<u>Week Ending</u>				North East	128	131
				Great Lakes	535	532
June 7, 2025	1,785	1.6	79.5	Midwest	252	235
June 7, 2024	1,703	4.8	76.7	Southern	802	793
May 31, 2025	1,757	0.7	78.2	Western	68	66
				Total	1,785	1,757
<u>Year-to-Date +</u>						
June 7, 2025	38,072	-0.2	75.5			
June 7, 2024	38,165	-	76.2			

*Raw steel production tonnage included in this report is estimated based on a sampling of steel producers (50% of domestic producers). Therefore, this report should be used primarily to assess production trends. The AISI production report "AIS 7," produced monthly and available by subscription, provides a more accurate summary of steel production based on data supplied by companies representing approximately 75% of U.S. production capacity plus includes revisions for previous months.

Average Weekly Raw Steel Production



Monthly Raw Steel Production



*Steel in the first solid state after melting suitable for further processing or sale, including ingots, steel for castings and strand or pressure cast blooms, slabs or other product forms. ** Based on tonnage capability to produce raw steel for a sustained full order book.

U.S. Rail Traffic¹
 Week 23, 2025 – Ended June 7, 2025

	This Week		Year-To-Date		
	Cars	vs 2024	Cumulative	Avg/wk ²	vs 2024
Total Carloads	225,301	3.1%	5,025,834	218,515	2.5%
Chemicals	32,680	0.5%	760,511	33,066	1.9%
Coal	57,889	5.0%	1,315,244	57,185	7.1%
Farm Products excl. Grain, and Food	16,985	-2.6%	389,755	16,946	2.6%
Forest Products	8,432	-1.4%	189,653	8,246	-1.0%
Grain	19,870	4.9%	487,043	21,176	4.8%
Metallic Ores and Metals	20,430	6.1%	438,602	19,070	-3.2%
Motor Vehicles and Parts	15,958	-4.2%	347,838	15,123	-0.7%
Nonmetallic Minerals	32,404	4.9%	656,602	28,548	0.1%
Petroleum and Petroleum Products	10,643	-4.1%	233,684	10,160	-0.9%
Other	10,010	22.7%	206,902	8,996	5.0%
Total Intermodal Units	258,506	-4.9%	6,198,500	269,500	6.1%
Total Traffic	483,807	-1.3%	11,224,334	488,015	4.5%

¹ Excludes U.S. operations of CPKC, CN and GMXT.

² Average per week figures may not sum to totals as a result of independent rounding.

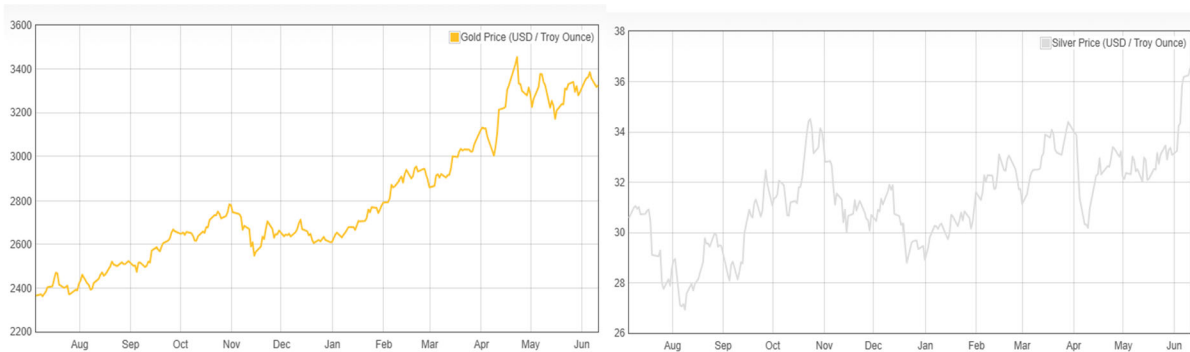
Source: AAR website - <https://www.aar.org/Pages/NEWS-and-EVENTS.aspx>

Copper, Gold and Silver Prices

Copper Prices:

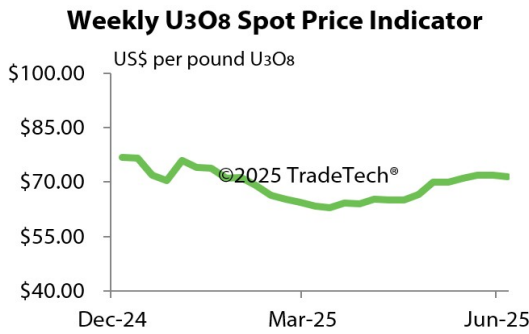


Gold and Silver Prices:



Source: Dailymetalprice.com - <https://www.dailymetalprice.com/metalprices.php>

Trade Tech's and UX's Uranium Price Indicators



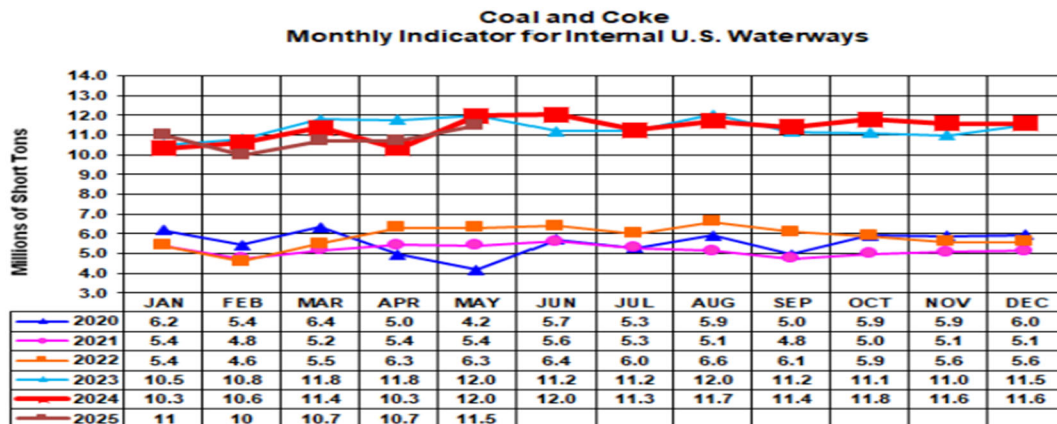
Sources: Trade Tech, Uranium Info Website – www.uranium.info ; Source: Ux Consulting Co., LLC – <http://www.uxc.com>

Coal stocks and average number of days of burn for non-lignite coal by region (electric power sector)

Zone	Coal	March 2025		March 2024		% Change of Stocks	February 2025		% Change of Stocks
		Stocks (1000 tons)	Days of Burn	Stocks (1000 tons)	Days of Burn		Stocks (1000 tons)	Days of Burn	
Northeast	Bituminous	1,001	117	2,076	278	-51.8%	775	108	29.2%
	Subbituminous	-	-	-	-	-	-	-	-
South	Bituminous	16,833	107	23,152	139	-27.3%	15,211	113	10.7%
	Subbituminous	5,459	89	6,927	112	-21.2%	4,891	87	11.6%
Midwest	Bituminous	9,658	114	12,638	143	-23.6%	9,689	123	-0.3%
	Subbituminous	29,134	119	35,787	146	-18.6%	27,266	128	6.9%
West	Bituminous	2,675	179	3,117	179	-14.2%	2,650	191	1.0%
	Subbituminous	29,137	143	33,112	150	-12.0%	28,172	151	3.4%
U.S. Total	Bituminous	30,167	114	40,983	145	-26.4%	28,324	121	6.5%
	Subbituminous	63,731	124	75,826	144	-16.0%	60,329	133	5.6%

Source: U.S. Energy Information Administration

Source: Energy Information Administration, Electric Monthly Update



For the Internal U.S. Waterway Monthly Indicators, estimates for the most recent month are based on lock performance management data. The estimates will be superseded by actual data as it becomes available.

Source: Waterborne Commerce Statistics Center

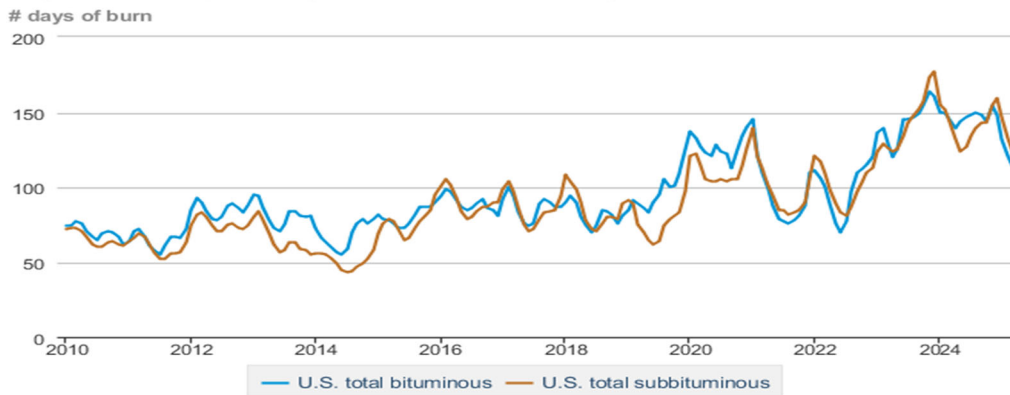
Average weekly coal commodity spot prices dollars per short ton

	Week ending					Week ago change
	05/09/25	05/16/25	05/23/25	05/30/25	06/06/25	
Central Appalachia 12,500 Btu, 1.2 SO ₂	\$78.00	\$79.00	\$79.00	\$79.00	\$79.00	\$0.00
Northern Appalachia 13,000 Btu, < 3.0 SO ₂	\$55.00	\$57.00	\$57.00	\$57.00	\$57.00	\$0.00
Illinois Basin 11,800 Btu, 5.0 SO ₂	\$46.50	\$46.50	\$46.50	\$46.50	\$46.50	\$0.00
Powder River Basin 8,800 Btu, 0.8 SO ₂	\$14.30	\$14.30	\$14.30	\$14.30	\$14.30	\$0.00

Data source: With permission, S&P Global

Source: Energy Information Administration (with permission from S&P Global), *Coal Market Report*

Days of burn by non-lignite coal rank, January 2010 - March 2025



eia Data source: U.S. Energy Information Administration

Source: Energy Information Administration, *Electricity Monthly Update Report*

Temperature – heating & cooling degree days (week ending May 29)

Region	HDDs			CDDs		
	Current total	Deviation from normal	Deviation from last year	Current total	Deviation from normal	Deviation from last year
New England	60	20	55	0	-3	-16
Middle Atlantic	56	26	55	0	-10	-35
E N Central	62	26	47	0	-18	-16
W N Central	50	19	21	1	-22	-14
South Atlantic	25	14	25	46	-5	-32
E S Central	15	5	15	36	-7	-31
W S Central	3	1	3	82	11	-28
Mountain	32	-12	-20	33	3	13
Pacific	18	-12	-21	1	-10	1
United States	38	11	21	22	-8	-19

Data source: National Oceanic and Atmospheric Administration
Note: HDDs=heating degree days; CDDs=cooling degree days

Source: Energy Information Administration, *Natural Gas Weekly Update*.

U.S. Production of Selected Mineral Commodities	2024 Year to Date - 3rd Quarter	2023 Year to Date - 3rd Quarter	Percent Change
Aluminum, secondary (000 Mt.)	670.0	686.0	-2%
Cement (Mil. Mt.)	62.5	66.9	-7%
Copper (000 Mt.)	777.0	835.0	-7%
Gold (Mt.)	118.0	124.0	-5%
Gypsum (Mil. Mt.)	14.2	14.0	1%
Iron Ore (Mil. Mt.)	34.6	32.9	5%
Lead (000 Mt.)	217.0	200.0	9%
Molybdenum (000 Mt.)	25.1	25.0	0%
Palladium (Mt.)	8.4	7.5	12%
Phosphate rock (Mil. Mt.)	14.9	14.9	0%
Platinum (Mt.)	2.5	2.2	14%
Sand & gravel, construction (Mil. Mt.)	684.0	731.0	-6%
Silver (Mt.)	771.0	764.0	1%
Soda ash (Mil. Mt.)	8.7	8.1	7%
Stone, crushed (Mil. Mt.)	1,110.0	1,170.0	-5%
Zinc (000 Mt.)	564.0	544.0	4%

Source: U.S. Geological Survey, Mineral Industry Surveys. Percent change based on USGS rounded numbers. 2024 data are preliminary estimates. W - withheld, N/A - not available

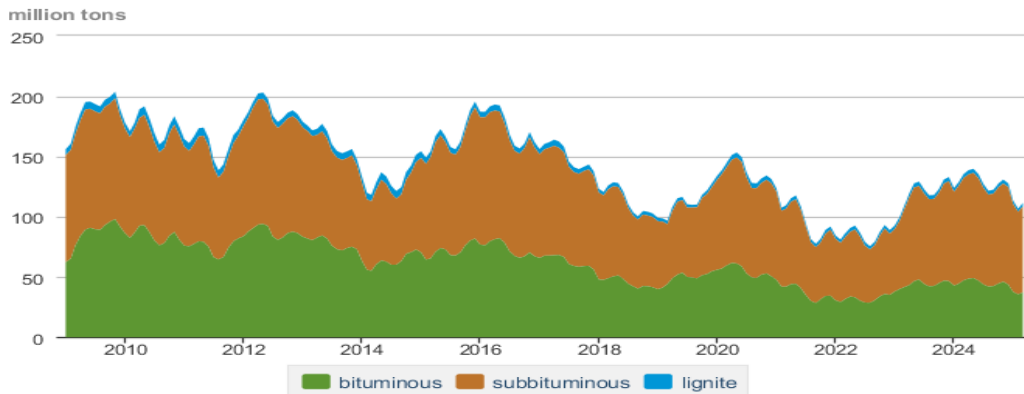
Natural gas spot prices (Henry Hub)
dollars per million British thermal units



Data source: Natural Gas Intelligence

Source: Energy Information Administration, *Natural Gas Weekly*.

Coal stocks by type, January 2009 - March 2025



Data source: U.S. Energy Information Administration

Source: Energy Information Administration, *Electricity Monthly Update*

Mining-Related Commodity Prices

Commodity Prices - Snapshot				
Metals Prices	Date	Price	Date	Price
Cobalt Spot Price (\$/lb)	6/3/24	\$15.28	6/10/24	\$15.12
Copper Spot Price (\$/lb)	6/3/24	\$4.82	6/10/24	\$4.87
Gold Spot Price (\$/ounce)	6/3/24	\$3,358.20	6/10/24	\$3,327.65
Lead Spot Price (\$/lb)	6/3/24	\$0.90	6/10/24	\$0.90
Lithium Spot Price (\$/kg)	6/3/24	\$8.38	6/10/24	\$8.39
Molybdenum Spot Price (\$/kg)	6/3/24	\$66.29	6/10/24	\$66.73
Nickel Spot Price (\$/lb)	6/3/24	\$6.99	6/10/24	\$6.94
Silver Spot Price (\$/ounce)	6/3/24	\$34.25	6/10/24	\$36.76
Steel HRC Price (\$/mt)	6/3/24	\$870.71	6/10/24	\$879.80
Steel Rebar Price (\$/mt)	6/3/24	\$407.78	6/10/24	\$411.01
Zinc Spot Price (\$/lb)	6/3/24	\$1.22	6/10/24	\$1.20
Energy Prices	Date	Price	Date	Price
Coal Price - Austr. Prem. Coking Coal Futures (\$/mt)	6/3/24	\$183.00	6/10/24	\$177.00
Coal Spot Price - Central Appalachian (\$/st)	5/30/24	\$79.00	6/6/24	\$79.00
Coal Spot Price - Newcastle futures (\$/mt)	6/3/24	\$104.14	6/10/24	\$103.53
Coal Spot Price - Rotterdam futures (\$/mt)	6/3/24	\$98.90	6/10/24	\$102.70
Natural Gas Spot Price - Henry Hub (\$/mmbtu)	5/28/24	\$3.14	6/4/24	\$2.82
Uranium Spot Price (\$/lb)	6/3/24	\$71.90	6/10/24	\$70.50

Sources: publicly available data from eia.gov, dailymetalprice.com, tradingeconomics.com, sgx.com, investing.com

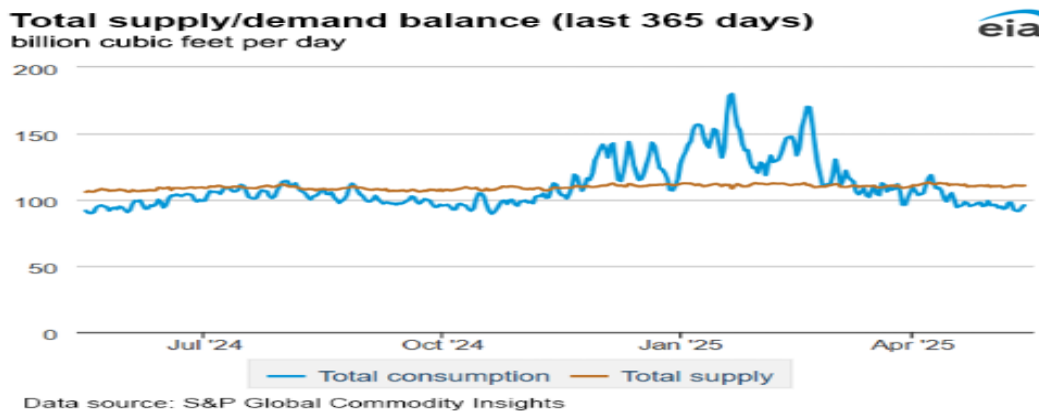
EIA Working Natural Gas Underground Storage

Working gas in underground storage

Region	Stocks billion cubic feet (Bcf)		
	2025-05-30	2025-05-23	change
East	498	462	36
Midwest	579	541	38
Mountain	205	198	7
Pacific	261	254	7
South Central	1,055	1,021	34
Total	2,598	2,476	122

Data source: U.S. Energy Information Administration Form EIA-912, *Weekly Underground Natural Gas Storage Report*
 Note: Totals may not equal sum of components because of independent rounding.

Source: Energy Information Administration, *Natural Gas Weekly Update*



Source: Energy Information Administration, *Natural Gas Weekly Update*

USGS Cobalt – U.S. Trade, Reported Stocks and Listed Prices

Cobalt - March 2025	Mar-25	Year to Date
U.S. Imports for Consumption - Metals (mt)	963	2,780
U.S. Exports of Cobalt Materials - Cobalt Content (mt)	573	1,190
Reported LME Stocks of Cobalt Metal (mt)	19	-
Listed Prices by Type (\$/lb): US Spot & LME Cash Avg.	19.30	13.98

Source: USGS, Mineral Industry Survey, Cobalt in March 2025, June 2025

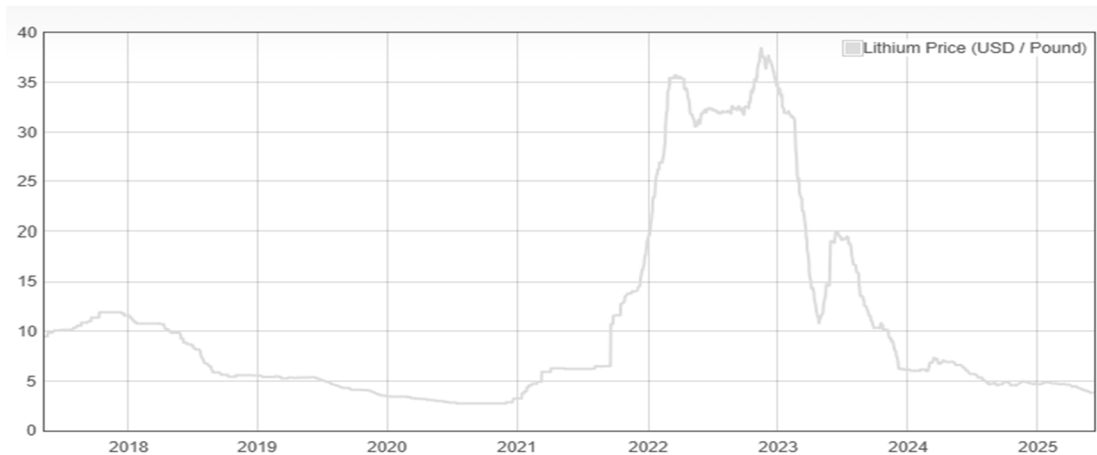
Cobalt and Lithium Prices

Cobalt Prices (US\$/pound):



Source: Dailymetalprice.com - <https://www.dailymetalprice.com/metalpricecharts.php?c=co&u=lb&d=0>

Lithium Prices (US\$/pound):



Source: Dailymetalprice.com - <https://www.dailymetalprice.com/metalpricecharts.php>