



NATIONAL MINING ASSOCIATION

WEEKLY STATISTICAL SUMMARY

June 20, 2025 Edition
(Data for Week Ending June 14, 2025)

Prepared by
National Mining Association

101 Constitution Avenue NW, Suite 500 East
Washington, DC 20001
(202) 463-2600
www.nma.org



NMA WEEKLY STATISTICAL SUMMARY

Vol. 62, No. 24 | Dated 06/20/25

COAL PRODUCTION, CONSUMPTION & TRADE

	Week Ended			* Cumulative Jan 1 to		
	6/14/25	6/15/24	% Chg	6/14/25	6/14/24	% Chg
EIA Coal Production (000 Tons):						
Week Ended/Year to Date	10,604	10,044	5.6%	243,258	224,713	8.3%
52 Weeks Ended	529,367	532,489	-0.6%			
AAR Coal Rail Cars Loaded:	59,027	56,064	5.3%	1,349,907	1,273,548	6.0%
EIA Coal Production						
Month Ended - May	May 25/24 46,227	39,370	% Chg 17.4%	Jan - May 25/24 219,536	204,950	% Chg 7.1%

U.S. Department of Commerce Coal Trade (000 Tons)

	April 25/24		% Chg	Jan - Apr 25/24		% Chg
Coal Exports:						
Metallurgical	3,617	3,446	5.0%	16,307	17,773	-8.2%
Steam Bit. *	3,927	3,364	16.7%	15,523	15,573	-0.3%
Lignite	4	6	-33.3%	38	35	8.6%
Anthracite	<u>40</u>	<u>31</u>	29.0%	<u>163</u>	<u>295</u>	-44.7%
Total	7,588	6,847	10.8%	32,031	33,676	-4.9%
Coal Imports:	264	254	3.9%	896	582	54.0%

	Week Ended			Cumulative Week 1 to		
	6/14/25	6/15/24	% Chg	6/14/25	6/15/24	% Chg
EI Electric Total Output (Mil. Kwh)	85,329	84,658	0.8%	1,899,212	1,834,074	3.6%
EI Coal Region Output (Mil. Kwh)	74,754	74,454	0.4%	1,651,374	1,594,224	3.6%
AISI Raw Steel Output (000 Tons)	1,783	1,703	4.7%	39,855	39,868	0.0%

EIA AVERAGE COAL & NATURAL GAS SPOT PRICES

Dollars Per Short Ton

Average Coal Spot Prices (\$/Short Ton)	Week Ending			Natural Gas Spot Prices (\$/MMBtu)	
	06/13/25	06/06/25	% Chg	Wed.	06/11/25
Central App, 12,500 Btu, 1.2 SO ₂	\$79.00	\$79.00	0.0%	Henry Hub	2.74
Northern App, 13,000 Btu, < 3.0 SO ₂	58.00	57.00	1.8%	New York	2.16
Illinois Basin, 11,800, 5.0 SO ₂	47.25	46.50	1.6%	Chicago	2.60
Powder River Basin, 8,800 Btu 0.8 SO ₂	14.30	14.30	0.0%	Cal.Comp.Avg.	2.74

Coal exports and Imports are "as reported" (not revised); *Steam bit. excludes lignite & anthracite. All data in this report are preliminary and subject to revision. r/ revised.

Sources: EIA; Edison Electric Institute; American Iron & Steel Institute; Association of American Railroads; Dept. of Commerce; S&P Global

EIA Estimated Weekly U.S. Coal Production Overview									
Coal-Producing Region & State (thousand short tons)	Week Ended			Year to Date			52 Weeks Ended		
	6/14/2025 (week 24)	6/7/2025 (week 23)	6/15/2024 (week 24)	6/14/2025	6/14/2024	% Change	6/14/2025	6/15/2024	% Change
Alabama	320	294	322	6,892	6,628	4.0	14,605	13,462	8.5
Alaska	20	20	19	495	478	3.6	1,018	1,000	1.8
Colorado	255	253	266	5,820	5,941	-2.0	12,236	12,887	-5.1
Illinois	762	728	724	18,036	16,568	8.9	35,736	35,441	0.8
Indiana	408	404	426	9,284	9,503	-2.3	19,873	21,480	-7.5
Kentucky total	500	499	536	11,364	11,650	-2.5	23,918	26,042	-8.2
Eastern (KY)	209	209	228	4,573	4,851	-5.7	9,990	11,118	-10.1
Western (KY)	291	290	308	6,791	6,799	-0.1	13,928	14,925	-6.7
Louisiana	5	5	5	122	115	5.8	270	272	-0.7
Maryland	28	28	26	627	597	5.1	1,349	1,275	5.8
Mississippi	47	48	52	1,060	757	40.0	2,337	2,343	-0.3
Missouri	3	3	3	61	68	-9.9	140	142	-1.4
Montana	561	543	513	11,824	11,289	4.7	27,452	26,930	1.9
New Mexico	150	146	158	2,851	3,276	-13.0	6,754	7,262	-7.0
North Dakota	567	543	511	13,031	11,494	13.4	26,885	24,161	11.3
Ohio	38	38	40	852	855	-0.3	1,787	1,810	-1.3
Oklahoma	s	s	.	s	s	-7.6	s	1	-100.0
Pennsylvania total	862	840	811	18,986	17,662	7.5	42,050	40,705	3.3
Anthracite (PA)	64	59	69	1,445	1,426	1.3	3,049	3,127	-2.5
Bituminous (PA)	798	781	743	17,541	16,236	8.0	39,001	37,579	3.8
Texas	256	244	208	6,055	4,724	28.2	13,621	12,294	10.8
Utah	163	143	87	3,820	2,709	41.0	8,565	6,245	37.1
Virginia	217	216	211	4,554	4,321	5.4	9,927	9,485	4.7
West Virginia total	1,765	1,714	1,750	39,927	36,639	9.0	82,397	79,954	3.1
Northern (WV)	915	917	890	21,313	18,337	16.2	43,083	41,019	5.0
Southern (WV)	851	797	860	18,614	18,302	1.7	39,314	38,935	1.0
Wyoming	3,677	3,688	3,378	87,596	79,440	10.3	198,448	209,298	-5.2
Appalachian total	3,438	3,339	3,388	76,412	71,552	6.8	162,105	157,808	2.7
Interior total	1,772	1,723	1,725	41,408	38,534	7.5	85,906	86,897	-1.1
Western total	5,393	5,336	4,931	125,438	114,627	9.4	281,357	287,784	-2.2
East of Mississippi River	4,946	4,810	4,897	111,582	105,179	6.1	233,979	231,996	0.9
West of Mississippi River	5,657	5,588	5,147	131,676	119,534	10.2	295,388	300,493	-1.7
Bituminous and lignite	10,540	10,339	9,976	241,813	223,287	8.3	526,318	529,363	-0.6
Anthracite	64	59	69	1,445	1,426	1.3	3,049	3,127	-2.5
U.S. total	10,604	10,398	10,044	243,258	224,713	8.3	529,367	532,489	-0.6
Railroad cars loaded	59,027	57,889	56,064	1,349,907	1,273,548	6.0	3,027,402	3,129,769	-3.3

Source: Energy Information Administration



Weekly Electric Output

Volume 93 No. 24

OUTPUT FOR WEEK ENDED - Jun 14, 2025

The net available amount of electric energy distributed by the Total Electric Utility Industry+ for the week ended Saturday, **Jun 14, 2025** was **85,329** gigawatthours (GWh), according to the Edison Electric Institute.

WEEKLY ELECTRIC OUTPUT BY GEOGRAPHIC DIVISION

(48 CONTIGUOUS STATES)

	Week Ended June 14		52 Weeks Ended June 14	
	GWh Output	% Increase Over Corresponding Week of 2024	GWh Output	% Increase Over Corresponding Week of 2024
New England	1,993	-2.75 %	114,086	1.70 %
Mid-Atlantic	8,002	-0.34 %	417,179	1.92 %
Central Industrial	12,855	0.97 %	659,427	2.59 %
West Central	6,647	-1.40 %	337,727	1.24 %
Southeast	21,274	1.60 %	1,050,298	2.52 %
South Central	19,596	-0.35 %	919,851	3.94 %
Rocky Mountain	6,380	0.53 %	308,128	4.10 %
Pacific Northwest	3,064	12.18 %	162,004	2.30 %
Pacific Southwest	5,518	1.72 %	278,108	4.73 %
Total United States	85,329	0.79 %	4,246,808	2.90 %

WEEKLY ELECTRIC OUTPUT IN PREVIOUS WEEKS--GWh

Week Ended	2025	Week Ended	2024	% Inc. (25/24)	52 Weeks Ended	2025	% Inc. (25/24)
May 24	77,837	May 25	81,411	-4.39 %	May 24	4,249,859	3.35 %
May 31	76,711	Jun 01	78,143	-1.83 %	May 31	4,248,428	3.28 %
Jun 07	82,114	Jun 08	84,405	-2.71 %	Jun 07	4,246,137	3.01 %
Jun 14	85,329	Jun 15	84,658	0.79 %	Jun 14	4,246,808	2.90 %
Jun 14	1,899,212	Jun 15	1,834,074	3.55 %	YEAR TO DATE, FIRST 24 WEEKS		

EEI WEEKLY ELECTRIC OUTPUT BY GEOGRAPHIC DIVISION (48 CONTIGUOUS STATES)

	Week Ended			NMA CUMULATIVE JANUARY WEEK ONE TO			52 Weeks Ended		
	14-Jun 2025 GWh Output	15-Jun 2024 GWh Output	% Increase Over Corresponding Week	14-Jun 2025 GWh Output	15-Jun 2024 GWh Output	% Increase Over Corresponding Week	14-Jun 2025 GWh Output	15-Jun 2024 GWh Output	% Increase Over Corresponding Week
New England	1,993	2,049	-2.7%	50,981	49,849	2.3%	114,086	112,176	1.7%
Mid-Atlantic	8,002	8,030	-0.3%	185,418	182,171	1.8%	417,179	409,309	1.9%
Central Industrial	12,855	12,732	1.0%	301,214	294,748	2.2%	659,427	642,766	2.6%
West Central	6,647	6,742	-1.4%	150,528	146,433	2.8%	337,727	333,576	1.2%
Southeast	21,274	20,940	1.6%	473,619	459,218	3.1%	1,050,298	1,024,434	2.5%
South Central	19,596	19,664	-0.3%	409,139	383,820	6.6%	919,851	884,942	3.9%
Rocky Mountain	6,380	6,346	0.5%	131,456	127,834	2.8%	308,128	296,005	4.1%
Pacific Northwest	3,064	2,731	12.2%	79,452	77,155	3.0%	162,004	158,367	2.3%
Pacific Southwest	5,518	5,425	1.7%	117,400	112,843	4.0%	278,108	265,540	4.7%
Total United States ^{1/}	85,329	84,659	0.8%	1,899,207	1,834,071	3.6%	4,246,808	4,127,115	2.9%
Coal Regions Only ^{2/}	74,754	74,454	0.4%	1,651,374	1,594,224	3.6%	3,692,610	3,591,032	2.8%

Notes: EEI output data are an estimate of electricity load made available for distribution derived as weekly net generation + purchases from non-utilities + net imports - exports - sales for resale. It is not meant to be a measure of electricity generation for the U.S. EEI survey data represent the majority of national distribution (large utilities, large government power projects, some independent and large municipal power projects). The remaining segment of the industry (smaller producers) is estimated. Non-utility generation is captured via direct sales to utilities. Data may not match weekly EEI report due to rounding.

^{1/} Excludes Alaska and Hawaii

^{2/} Excludes New England and Pacific regions

SOURCE: Edison Electric Institute (EEI), *Weekly Electric Output Report*.

AMERICAN IRON AND STEEL INSTITUTE
 25 Massachusetts Avenue, NW, Suite 800
 Washington, D.C. 20001

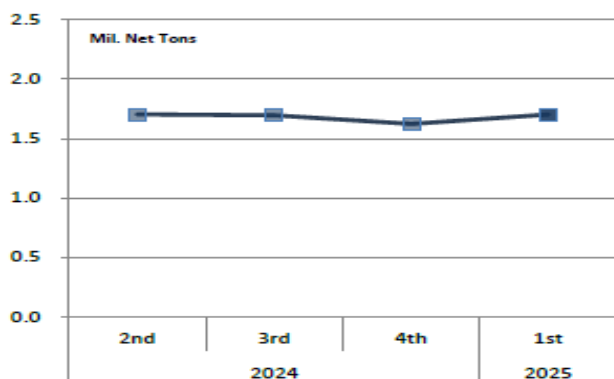
June 16, 2025

ESTIMATED WEEKLY RAW STEEL* PRODUCTION

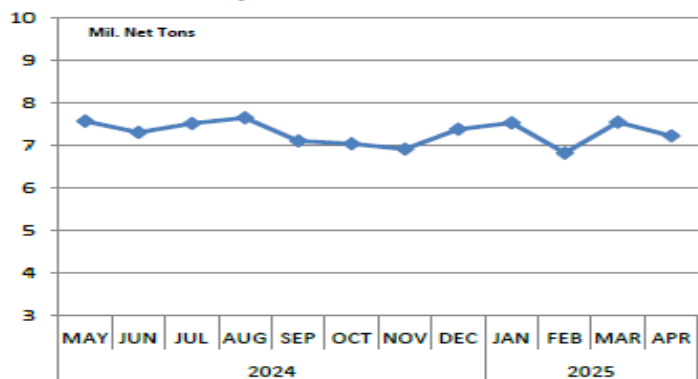
Period	Thousand Net Tons	Percent Change from Previous Period	Percent Capability Utilization**	Production by District		
				Week Ending		
				June 14	June 7	
<u>Week Ending</u>				North East	129	128
				Great Lakes	556	535
June 14, 2025	1,783	-0.1	79.4	Midwest	253	252
June 14, 2024	1,703	4.7	76.7	Southern	780	802
June 7, 2025	1,785	1.6	79.5	Western	65	68
				Total	1,783	1,785
<u>Year-to-Date +</u>						
June 14, 2025	39,855	0.0	75.6			
June 14, 2024	39,868	-	76.2			

*Raw steel production tonnage included in this report is estimated based on a sampling of steel producers (50% of domestic producers). Therefore, this report should be used primarily to assess production trends. The AISI production report "AIS 7," produced monthly and available by subscription, provides a more accurate summary of steel production based on data supplied by companies representing approximately 75% of U.S. production capacity plus includes revisions for previous months.

Average Weekly Raw Steel Production



Monthly Raw Steel Production



*Steel in the first solid state after melting suitable for further processing or sale, including ingots, steel for castings and strand or pressure cast blooms, slabs or other product forms. ** Based on tonnage capability to produce raw steel for a sustained full order book.

U.S. Rail Traffic¹
Week 24, 2025 – Ended June 14, 2025

	This Week		Year-To-Date		
	Cars	vs 2024	Cumulative	Avg/wk ²	vs 2024
Total Carloads	224,851	1.0%	5,250,685	218,779	2.5%
Chemicals	32,894	-0.7%	793,405	33,059	1.8%
Coal	59,027	5.3%	1,374,271	57,261	7.0%
Farm Products excl. Grain, and Food	16,817	3.8%	406,572	16,941	2.7%
Forest Products	8,194	0.5%	197,847	8,244	-1.0%
Grain	19,767	3.2%	506,810	21,117	4.8%
Metallic Ores and Metals	20,668	-2.6%	459,270	19,136	-3.1%
Motor Vehicles and Parts	17,460	2.0%	365,298	15,221	-0.6%
Nonmetallic Minerals	31,016	-0.3%	687,618	28,651	0.1%
Petroleum and Petroleum Products	10,294	-6.8%	243,978	10,166	-1.2%
Other	8,714	-7.8%	215,616	8,984	4.4%
Total Intermodal Units	260,959	-3.5%	6,459,459	269,144	5.7%
Total Traffic	485,810	-1.5%	11,710,144	487,923	4.2%

¹ Excludes U.S. operations of CPKC, CN and GMXT.

² Average per week figures may not sum to totals as a result of independent rounding.

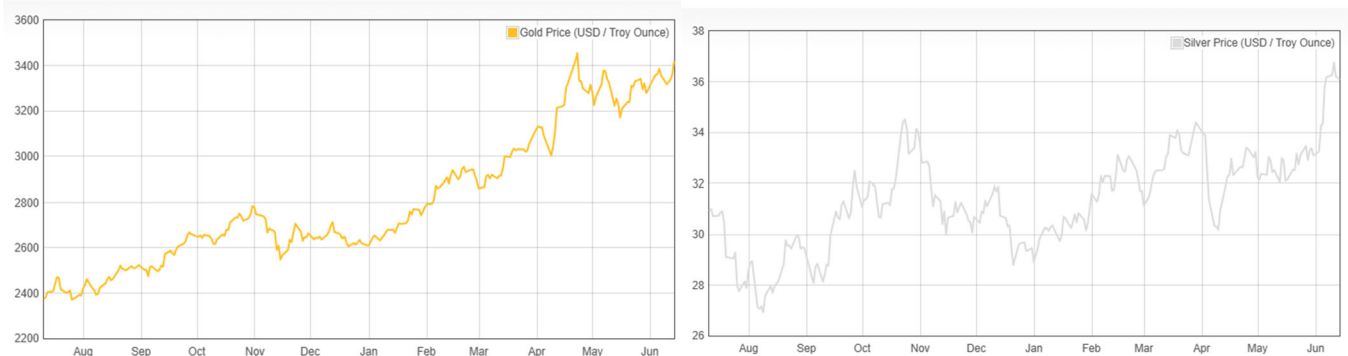
Source: AAR website - <https://www.aar.org/Pages/NEWS-and-EVENTS.aspx>

Copper, Gold and Silver Prices

Copper Prices:

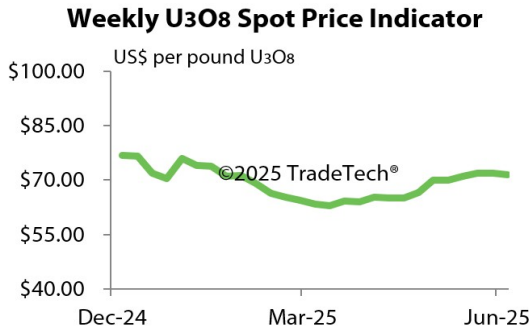


Gold and Silver Prices:



Source: Dailymetalprice.com - <https://www.dailymetalprice.com/metalprices.php>

Trade Tech's and UX's Uranium Price Indicators



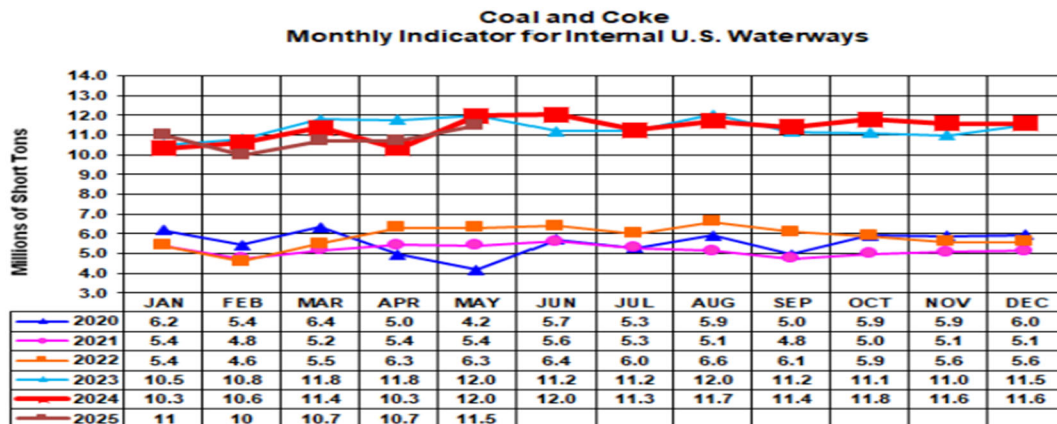
Sources: Trade Tech, Uranium Info Website – www.uranium.info ; Source: Ux Consulting Co., LLC – <http://www.uxc.com>

Coal stocks and average number of days of burn for non-lignite coal by region (electric power sector)

Zone	Coal	March 2025		March 2024		% Change of Stocks	February 2025		% Change of Stocks
		Stocks (1000 tons)	Days of Burn	Stocks (1000 tons)	Days of Burn		Stocks (1000 tons)	Days of Burn	
Northeast	Bituminous	1,001	117	2,076	278	-51.8%	775	108	29.2%
	Subbituminous
South	Bituminous	16,833	107	23,152	139	-27.3%	15,211	113	10.7%
	Subbituminous	5,459	89	6,927	112	-21.2%	4,891	87	11.6%
Midwest	Bituminous	9,658	114	12,638	143	-23.6%	9,689	123	-0.3%
	Subbituminous	29,134	119	35,787	146	-18.6%	27,266	128	6.9%
West	Bituminous	2,675	179	3,117	179	-14.2%	2,650	191	1.0%
	Subbituminous	29,137	143	33,112	150	-12.0%	28,172	151	3.4%
U.S. Total	Bituminous	30,167	114	40,983	145	-26.4%	28,324	121	6.5%
	Subbituminous	63,731	124	75,826	144	-16.0%	60,329	133	5.6%

Source: U.S. Energy Information Administration

Source: Energy Information Administration, Electric Monthly Update



For the Internal U.S. Waterway Monthly Indicators, estimates for the most recent month are based on lock performance management data. The estimates will be superseded by actual data as it becomes available.

Source: Waterborne Commerce Statistics Center

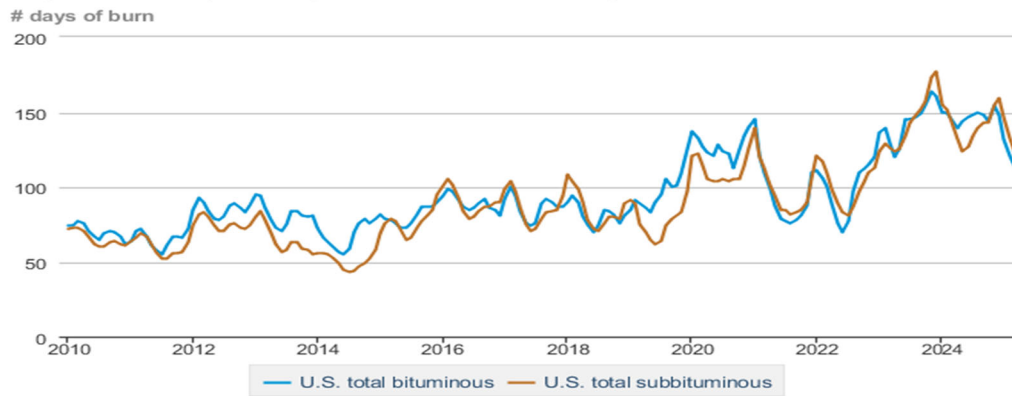
Average weekly coal commodity spot prices dollars per short ton

	Week ending					Week ago change
	05/16/25	05/23/25	05/30/25	06/06/25	06/13/25	
Central Appalachia 12,500 Btu, 1.2 SO ₂	\$79.00	\$79.00	\$79.00	\$79.00	\$79.00	\$0.00
Northern Appalachia 13,000 Btu, < 3.0 SO ₂	\$57.00	\$57.00	\$57.00	\$57.00	\$58.00	\$1.00
Illinois Basin 11,800 Btu, 5.0 SO ₂	\$46.50	\$46.50	\$46.50	\$46.50	\$47.25	\$0.75
Powder River Basin 8,800 Btu, 0.8 SO ₂	\$14.30	\$14.30	\$14.30	\$14.30	\$14.30	\$0.00

Data source: With permission, S&P Global

Source: Energy Information Administration (with permission from S&P Global), *Coal Market Report*

Days of burn by non-lignite coal rank, January 2010 - March 2025



 Data source: U.S. Energy Information Administration

Source: Energy Information Administration, *Electricity Monthly Update Report*

Temperature – heating & cooling degree days (week ending Jun 05)

Region	HDDs			CDDs		
	Current total	Deviation from normal	Deviation from last year	Current total	Deviation from normal	Deviation from last year
New England	27	-2	9	8	3	1
Middle Atlantic	26	5	13	13	-1	-4
E N Central	29	3	5	9	-14	-5
W N Central	16	-7	4	24	-6	-6
South Atlantic	9	2	4	51	-8	-6
E S Central	4	-2	-1	51	-1	0
W S Central	1	0	1	87	4	-4
Mountain	23	-12	2	36	-1	-4
Pacific	6	-18	-8	19	3	13
United States	17	-3	3	33	-4	-1

Data source: National Oceanic and Atmospheric Administration
Note: HDDs=heating degree days; CDDs=cooling degree days

Source: Energy Information Administration, *Natural Gas Weekly Update*.

U.S. Production of Selected Mineral Commodities	2024 Year to Date - 3rd Quarter	2023 Year to Date - 3rd Quarter	Percent Change
Aluminum, secondary (000 Mt.)	670.0	686.0	-2%
Cement (Mil. Mt.)	62.5	66.9	-7%
Copper (000 Mt.)	777.0	835.0	-7%
Gold (Mt.)	118.0	124.0	-5%
Gypsum (Mil. Mt.)	14.2	14.0	1%
Iron Ore (Mil. Mt.)	34.6	32.9	5%
Lead (000 Mt.)	217.0	200.0	9%
Molybdenum (000 Mt.)	25.1	25.0	0%
Palladium (Mt.)	8.4	7.5	12%
Phosphate rock (Mil. Mt.)	14.9	14.9	0%
Platinum (Mt.)	2.5	2.2	14%
Sand & gravel, construction (Mil. Mt.)	684.0	731.0	-6%
Silver (Mt.)	771.0	764.0	1%
Soda ash (Mil. Mt.)	8.7	8.1	7%
Stone, crushed (Mil. Mt.)	1,110.0	1,170.0	-5%
Zinc (000 Mt.)	564.0	544.0	4%

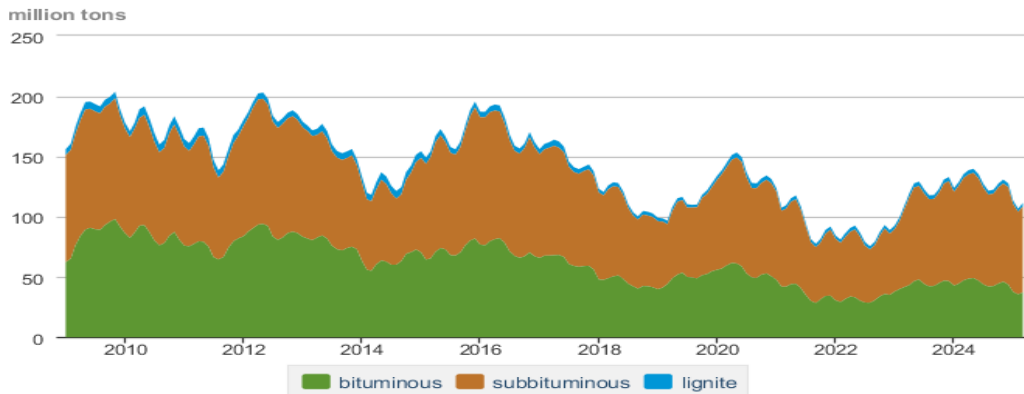
Source: U.S. Geological Survey, Mineral Industry Surveys. Percent change based on USGS rounded numbers. 2024 data are preliminary estimates. W - withheld, N/A - not available

Natural gas spot prices (Henry Hub)
dollars per million British thermal units



Source: Energy Information Administration, *Natural Gas Weekly*.

Coal stocks by type, January 2009 - March 2025



Source: Energy Information Administration, *Electricity Monthly Update*

Mining-Related Commodity Prices

Commodity Prices - Snapshot				
Metals Prices	Date	Price	Date	Price
Cobalt Spot Price (\$/lb)	6/10/24	\$15.12	6/17/24	\$15.12
Copper Spot Price (\$/lb)	6/10/24	\$4.87	6/17/24	\$4.78
Gold Spot Price (\$/ounce)	6/10/24	\$3,327.65	6/17/24	\$3,380.55
Lead Spot Price (\$/lb)	6/10/24	\$0.90	6/17/24	\$0.89
Lithium Spot Price (\$/kg)	6/10/24	\$8.39	6/17/24	\$8.41
Molybdenum Spot Price (\$/kg)	6/10/24	\$66.73	6/17/24	\$66.33
Nickel Spot Price (\$/lb)	6/10/24	\$6.94	6/17/24	\$6.76
Silver Spot Price (\$/ounce)	6/10/24	\$36.76	6/17/24	\$37.06
Steel HRC Price (\$/mt)	6/10/24	\$879.80	6/17/24	\$863.64
Steel Rebar Price (\$/mt)	6/10/24	\$411.01	6/17/24	\$410.28
Zinc Spot Price (\$/lb)	6/10/24	\$1.20	6/17/24	\$1.19
Energy Prices	Date	Price	Date	Price
Coal Price - Austr. Prem. Coking Coal Futures (\$/mt)	6/10/24	\$177.00	6/17/24	\$173.25
Coal Spot Price - Central Appalachian (\$/st)	6/6/24	\$79.00	6/13/24	\$79.00
Coal Spot Price - Newcastle futures (\$/mt)	6/10/24	\$103.53	6/17/24	\$106.16
Coal Spot Price - Rotterdam futures (\$/mt)	6/10/24	\$102.70	6/17/24	\$103.85
Natural Gas Spot Price - Henry Hub (\$/mmbtu)	6/4/24	\$2.82	6/11/24	\$2.74
Uranium Spot Price (\$/lb)	6/10/24	\$70.50	6/17/24	\$74.50

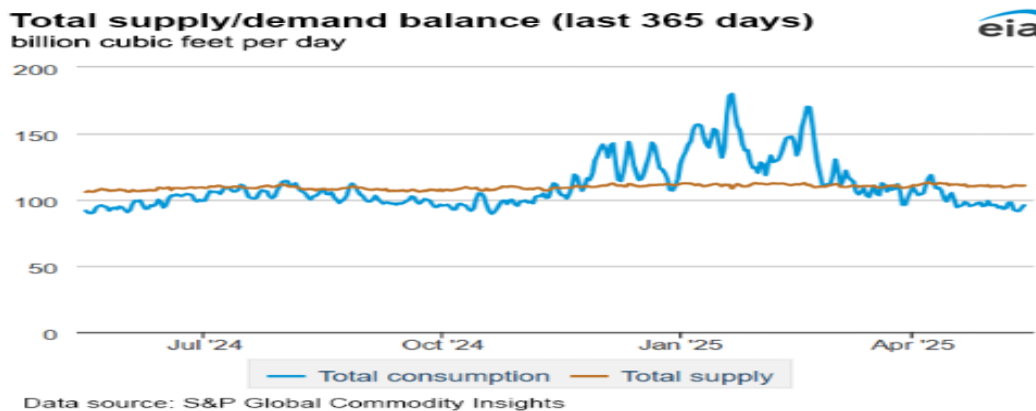
Sources: publically available data from eia.gov, dailymetalprice.com, tradingeconomics.com, sgxgroup.com, investing.com

EIA Working Natural Gas Underground Storage

Region	Working gas in underground storage		
	2025-06-06	2025-05-30	change
East	531	498	33
Midwest	608	579	29
Mountain	210	205	5
Pacific	266	261	5
South Central	1,091	1,055	36
Total	2,707	2,598	109

Data source: U.S. Energy Information Administration Form EIA-912, *Weekly Underground Natural Gas Storage Report*
 Note: Totals may not equal sum of components because of independent rounding.

Source: Energy Information Administration, *Natural Gas Weekly Update*



Source: Energy Information Administration, *Natural Gas Weekly Update*

USGS Cobalt – U.S. Trade, Reported Stocks and Listed Prices

Cobalt - March 2025	Mar-25	Year to Date
U.S. Imports for Consumption - Metals (mt)	963	2,780
U.S. Exports of Cobalt Materials - Cobalt Content (mt)	573	1,190
Reported LME Stocks of Cobalt Metal (mt)	19	-
Listed Prices by Type (\$/lb): US Spot & LME Cash Avg.	19.30	13.98

Source: USGS, Mineral Industry Survey, Cobalt in March 2025, June 2025

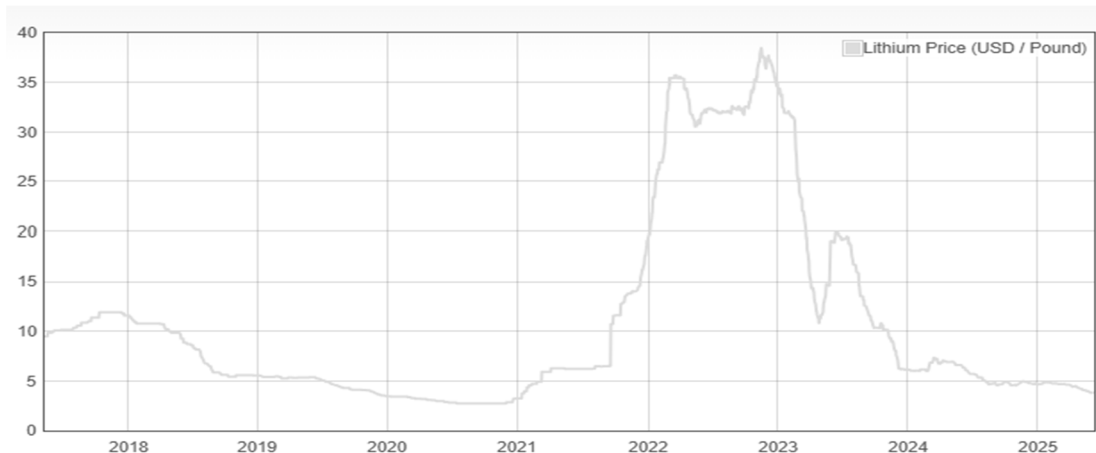
Cobalt and Lithium Prices

Cobalt Prices (US\$/pound):



Source: Dailymetalprice.com - <https://www.dailymetalprice.com/metalpricecharts.php?c=co&u=lb&d=0>

Lithium Prices (US\$/pound):



Source: Dailymetalprice.com - <https://www.dailymetalprice.com/metalpricecharts.php>