



NATIONAL MINING ASSOCIATION

WEEKLY STATISTICAL SUMMARY

July 25, 2025 Edition
(Data for Week Ending July 19, 2025)

Prepared by
National Mining Association

101 Constitution Avenue NW, Suite 500 East
Washington, DC 20001
(202) 463-2600
www.nma.org



NMA WEEKLY STATISTICAL SUMMARY

Vol. 62, No. 29 | Dated 07/25/25

COAL PRODUCTION, CONSUMPTION & TRADE

	Week Ended			* Cumulative Jan 1 to		
	7/19/25	7/20/24	% Chg	7/19/25	7/19/24	% Chg
EIA Coal Production (000 Tons):						
Week Ended/Year to Date	11,038	9,976	10.6%	294,657	273,885	7.6%
52 Weeks Ended	532,015	529,457	0.5%			
AAR Coal Rail Cars Loaded:	62,270	57,906	7.5%	1,638,876	1,553,940	5.5%
EIA Coal Production						
Month Ended - June	June 25/24		% Chg	Jan - June 25/24		% Chg
	44,385	43,004	3.2%	266,642	247,954	7.5%

U.S. Department of Commerce Coal Trade (000 Tons)

	May 25/24		% Chg	Jan - May 25/24		% Chg
Coal Exports:						
Metallurgical	3,899	4,407	-11.5%	20,206	22,180	-8.9%
Steam Bit. *	3,877	4,498	-13.8%	19,400	20,071	-3.3%
Lignite	4	7	-42.9%	42	42	0.0%
Anthracite	66	31	112.9%	229	326	-29.8%
Total	7,846	8,943	-12.3%	39,877	42,619	-6.4%
Coal Imports:	196	80	145.0%	1,092	662	65.0%

	Week Ended			Cumulative Week 1 to		
	7/19/25	7/20/24	% Chg	7/19/25	7/20/24	% Chg
EI Electric Total Output (Mil. Kwh)	99,373	97,296	2.1%	2,381,155	2,311,768	3.0%
EI Coal Region Output (Mil. Kwh)	87,241	84,789	2.9%	2,076,311	2,012,445	3.2%
AISI Raw Steel Output (000 Tons)	1,768	1,696	4.2%	48,750	48,365	0.8%

EIA AVERAGE COAL & NATURAL GAS SPOT PRICES

Dollars Per Short Ton

Average Coal Spot Prices (\$/Short Ton)	Week Ending			Natural Gas Spot Prices (\$/MMBtu)	
	07/18/25	07/11/25	% Chg	Wed.	07/16/25
Central App, 12,500 Btu, 1.2 SO ₂	\$79.00	\$79.00	0.0%	Henry Hub	3.43
Northern App, 13,000 Btu, < 3.0 SO ₂	58.00	58.00	0.0%	New York	3.50
Illinois Basin, 11,800, 5.0 SO ₂	48.25	48.25	0.0%	Chicago	3.26
Powder River Basin, 8,800 Btu 0.8 SO ₂	14.30	14.30	0.0%	Cal.Comp.Avg.	3.45

Coal exports and Imports are "as reported" (not revised); *Steam bit. excludes lignite & anthracite. All data in this report are preliminary and subject to revision. r/ revised.

Sources: EIA; Edison Electric Institute; American Iron & Steel Institute; Association of American Railroads; Dept. of Commerce; S&P Global

EIA Estimated Weekly U.S. Coal Production Overview									
Coal-Producing Region & State (thousand short tons)	Week Ended			Year to Date			52 Weeks Ended		
	7/19/2025 (week 29)	7/12/2025 (week 28)	7/20/2024 (week 29)	7/19/2025	7/19/2024	% Change	7/19/2025	7/20/2024	% Change
Alabama	322	283	237	8,386	7,985	5.0	14,752	13,688	7.8
Alaska	19	20	15	588	560	5.0	1,030	992	3.8
Colorado	237	227	214	6,983	7,108	-1.8	12,239	12,984	-5.7
Illinois	683	685	666	21,502	20,026	7.4	35,819	35,641	0.5
Indiana	387	371	354	11,166	11,401	-2.1	19,866	21,263	-6.6
Kentucky total	465	441	427	13,642	13,992	-2.5	23,903	25,833	-7.5
Eastern (KY)	199	188	186	5,538	5,860	-5.5	9,986	11,001	-9.2
Western (KY)	266	252	241	8,105	8,133	-0.3	13,917	14,832	-6.2
Louisiana	6	5	5	148	140	5.4	271	267	1.5
Maryland	28	28	24	762	717	6.2	1,363	1,275	6.9
Mississippi	54	47	49	1,300	1,002	29.7	2,333	2,362	-1.2
Missouri	3	3	3	76	84	-8.7	140	145	-3.4
Montana	619	563	575	14,622	13,958	4.8	27,573	26,967	2.2
New Mexico	140	142	150	3,555	4,028	-11.7	6,706	7,205	-6.9
North Dakota	577	534	467	15,729	13,883	13.3	27,200	24,431	11.3
Ohio	34	35	28	1,026	1,020	0.5	1,797	1,804	-0.4
Oklahoma	.	.	.	s	s	12.7	s	1	-100.0
Pennsylvania total	904	848	799	23,179	21,530	7.7	42,246	40,793	3.6
Anthracite (PA)	63	57	52	1,743	1,722	1.2	3,077	3,138	-1.9
Bituminous (PA)	841	791	747	21,436	19,808	8.2	39,170	37,655	4.0
Texas	310	290	270	7,413	5,882	26.0	13,793	12,215	12.9
Utah	220	201	179	4,734	3,373	40.4	8,802	6,308	39.5
Virginia	220	204	189	5,589	5,318	5.1	10,000	9,553	4.7
West Virginia total	1,727	1,621	1,454	48,208	44,645	8.0	83,140	80,293	3.5
Northern (WV)	894	844	745	25,606	22,334	14.7	43,414	40,982	5.9
Southern (WV)	833	777	709	22,601	22,310	1.3	39,727	39,311	1.1
Wyoming	4,083	3,822	3,870	106,048	97,234	9.1	199,042	205,438	-3.1
Appalachian total	3,435	3,208	2,918	92,687	87,075	6.4	163,284	158,407	3.1
Interior total	1,708	1,654	1,588	49,710	46,666	6.5	86,140	86,726	-0.7
Western total	5,895	5,509	5,470	152,259	140,143	8.6	282,592	284,324	-0.6
East of Mississippi River	4,825	4,563	4,227	134,760	127,636	5.6	235,220	232,504	1.2
West of Mississippi River	6,214	5,808	5,748	159,897	146,249	9.3	296,796	296,952	-0.1
Bituminous and lignite	10,975	10,314	9,923	292,914	272,162	7.6	528,939	526,319	0.5
Anthracite	63	57	52	1,743	1,722	1.2	3,077	3,138	-1.9
U.S. total	11,038	10,371	9,976	294,657	273,885	7.6	532,015	529,457	0.5
Railroad cars loaded	62,270	58,370	57,906	1,638,876	1,553,940	5.5	3,035,741	3,098,517	-2.0

Source: Energy Information Administration



Weekly Electric Output

Volume 93 No. 29

OUTPUT FOR WEEK ENDED - Jul 19, 2025

The net available amount of electric energy distributed by the Total Electric Utility Industry+ for the week ended Saturday, **Jul 19, 2025** was **99,373** gigawatthours (GWh), according to the Edison Electric Institute.

WEEKLY ELECTRIC OUTPUT BY GEOGRAPHIC DIVISION

(48 CONTIGUOUS STATES)

	Week Ended July 19		52 Weeks Ended July 19	
	GWh Output	% Increase Over Corresponding Week of 2024	GWh Output	% Increase Over Corresponding Week of 2024
New England	2,788	-3.02 %	113,635	0.47 %
Mid-Atlantic	10,280	-0.94 %	416,006	0.47 %
Central Industrial	15,322	6.04 %	664,314	2.52 %
West Central	7,890	5.52 %	340,416	1.75 %
Southeast	25,307	2.31 %	1,049,467	1.71 %
South Central	21,194	4.70 %	921,809	4.38 %
Rocky Mountain	7,248	-3.44 %	307,317	2.89 %
Pacific Northwest	3,283	1.10 %	162,030	1.91 %
Pacific Southwest	6,060	-5.09 %	276,064	2.79 %
Total United States	99,373	2.13 %	4,251,059	2.41 %

WEEKLY ELECTRIC OUTPUT IN PREVIOUS WEEKS--GWh

Week Ended	2025	Week Ended	2024	% Inc. (25/24)	52 Weeks Ended	2025	% Inc. (25/24)
Jun 28	99,357	Jun 29	96,297	3.18 %	Jun 28	4,246,983	2.48 %
Jul 05	93,747	Jul 06	92,792	1.03 %	Jul 05	4,247,938	2.44 %
Jul 12	98,133	Jul 13	97,089	1.08 %	Jul 12	4,248,982	2.41 %
Jul 19	99,373	Jul 20	97,296	2.13 %	Jul 19	4,251,059	2.41 %
Jul 19	2,381,155	Jul 20	2,311,768	3.00 %	YEAR TO DATE, FIRST 29 WEEKS		

EEI WEEKLY ELECTRIC OUTPUT BY GEOGRAPHIC DIVISION (48 CONTIGUOUS STATES)

	Week Ended			NMA CUMULATIVE JANUARY WEEK ONE TO			52 Weeks Ended		
	19-Jul 2025 GWh Output	20-Jul 2024 GWh Output	% Increase Over Corresponding Week	19-Jul 2025 GWh Output	20-Jul 2024 GWh Output	% Increase Over Corresponding Week	19-Jul 2025 GWh Output	20-Jul 2024 GWh Output	% Increase Over Corresponding Week
New England	2,788	2,874	-3.0%	63,834	63,151	1.1%	113,635	113,102	0.5%
Mid-Atlantic	10,280	10,378	-0.9%	234,345	232,271	0.9%	416,006	414,044	0.5%
Central Industrial	15,322	14,449	6.0%	379,253	367,901	3.1%	664,314	647,984	2.5%
West Central	7,890	7,478	5.5%	190,190	183,408	3.7%	340,416	334,557	1.8%
Southeast	25,307	24,736	2.3%	594,019	580,448	2.3%	1,049,467	1,031,855	1.7%
South Central	21,194	20,242	4.7%	512,628	485,351	5.6%	921,809	883,146	4.4%
Rocky Mountain	7,248	7,506	-3.4%	165,876	163,066	1.7%	307,317	298,695	2.9%
Pacific Northwest	3,283	3,248	1.1%	94,358	92,036	2.5%	162,030	158,993	1.9%
Pacific Southwest	6,060	6,385	-5.1%	146,646	144,133	1.7%	276,064	268,577	2.8%
Total United States ^{1/}	<u>99,372</u>	<u>97,296</u>	2.1%	<u>2,381,149</u>	<u>2,311,765</u>	3.0%	<u>4,251,058</u>	<u>4,150,953</u>	2.4%
Coal Regions Only ^{2/}	87,241	84,789	2.9%	2,076,311	2,012,445	3.2%	3,699,329	3,610,281	2.5%

Notes: EEI output data are an estimate of electricity load made available for distribution derived as weekly net generation + purchases from non-utilities + net imports - exports - sales for resale. It is not meant to be a measure of electricity generation for the U.S. EEI survey data represent the majority of national distribution (large utilities, large government power projects, some independent and large municipal power projects). The remaining segment of the industry (smaller producers) is estimated. Non-utility generation is captured via direct sales to utilities. Data may not match weekly EEI report due to rounding.

^{1/} Excludes Alaska and Hawaii

^{2/} Excludes New England and Pacific regions

SOURCE: Edison Electric Institute (EEI), *Weekly Electric Output Report*.

AMERICAN IRON AND STEEL INSTITUTE
 25 Massachusetts Avenue, NW, Suite 800
 Washington, D.C. 20001

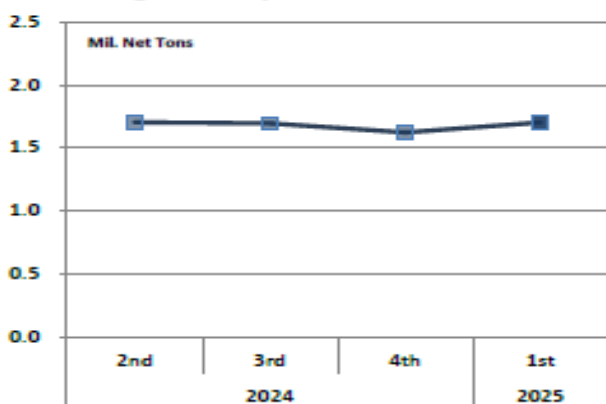
July 21, 2025

ESTIMATED WEEKLY RAW STEEL* PRODUCTION

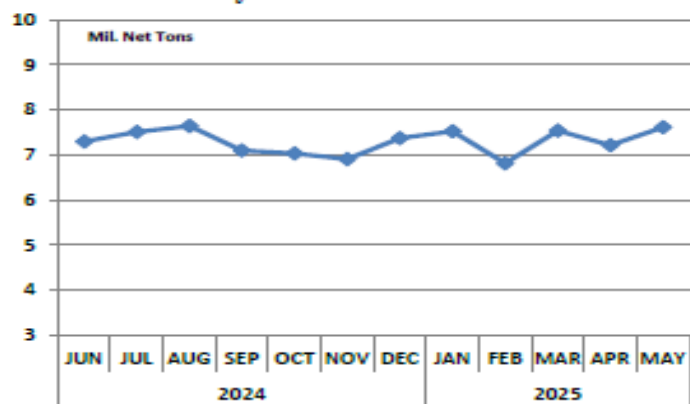
Period	Thousand Net Tons	Percent Change from Previous Period	Percent Capacity Utilization**	Production by District		
				Week Ending		
				July 19	July 12	
<u>Week Ending</u>				North East	118	121
				Great Lakes	561	570
July 19, 2025	1,768	-0.8	78.0	Midwest	223	233
July 19, 2024	1,696	4.2	76.4	Southern	798	790
July 12, 2025	1,783	0.1	78.7	Western	68	69
				Total	1,768	1,783
<u>Year-to-Date +</u>						
July 19, 2025	48,750	0.8	76.2			
July 19, 2024	48,365	-	76.2			

*Raw steel production tonnage included in this report is estimated based on a sampling of steel producers (50% of domestic producers). Therefore, this report should be used primarily to assess production trends. The AISI production report "AIS 7," produced monthly and available by subscription, provides a more accurate summary of steel production based on data supplied by companies representing approximately 75% of U.S. production capacity plus includes revisions for previous months.

Average Weekly Raw Steel Production



Monthly Raw Steel Production



*Steel in the first solid state after melting suitable for further processing or sale, including ingots, steel for castings and strand or pressure cast blooms, slabs or other product forms. ** Based on tonnage capability to produce raw steel for a sustained full order book.

U.S. Rail Traffic¹
Week 29, 2025 – Ended July 19, 2025

	This Week		Year-To-Date		
	Cars	vs 2024	Cumulative	Avg/wk ²	vs 2024
Total Carloads	229,739	7.28%	6,363,575	219,434	2.7%
Chemicals	33,460	4.4%	956,130	32,970	1.9%
Coal	62,270	7.8%	1,663,238	57,353	6.3%
Farm Products excl. Grain, and Food	17,058	1.0%	490,229	16,904	2.5%
Forest Products	8,333	2.0%	238,729	8,232	-1.0%
Grain	21,541	24.8%	612,313	21,114	6.4%
Metallic Ores and Metals	21,220	9.2%	562,847	19,409	-2.3%
Motor Vehicles and Parts	13,521	8.5%	437,417	15,083	0.9%
Nonmetallic Minerals	32,381	5.3%	842,910	29,066	0.49%
Petroleum and Petroleum Products	11,149	3.8%	297,915	10,273	-0.2%
Other	8,806	2.5%	261,847	9,029	5.0%
Total Intermodal Units	277,143	4.3%	7,771,228	267,973	5.0%
Total Traffic	506,882	5.6%	14,134,803	487,407	3.9%

¹ Excludes U.S. operations of CPKC, CN and GMXT.

² Average per week figures may not sum to totals as a result of independent rounding.

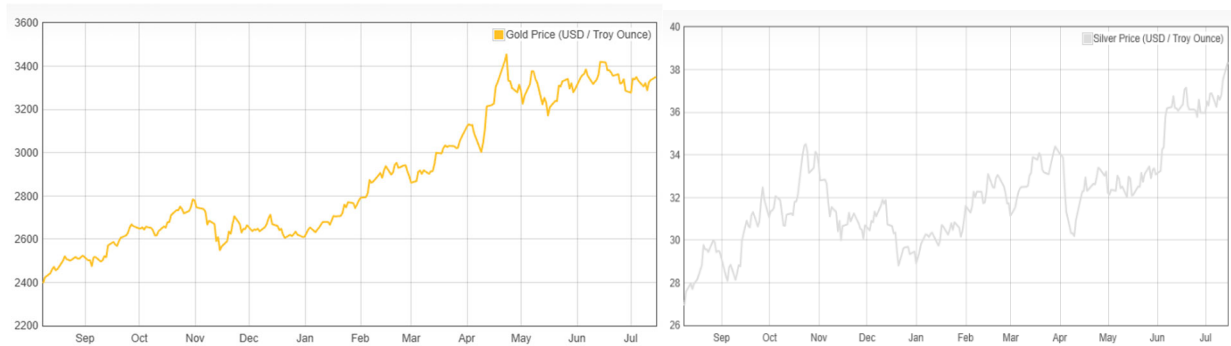
Source: AAR website - <https://www.aar.org/Pages/NEWS-and-EVENTS.aspx>

Copper, Gold and Silver Prices

Copper Prices:

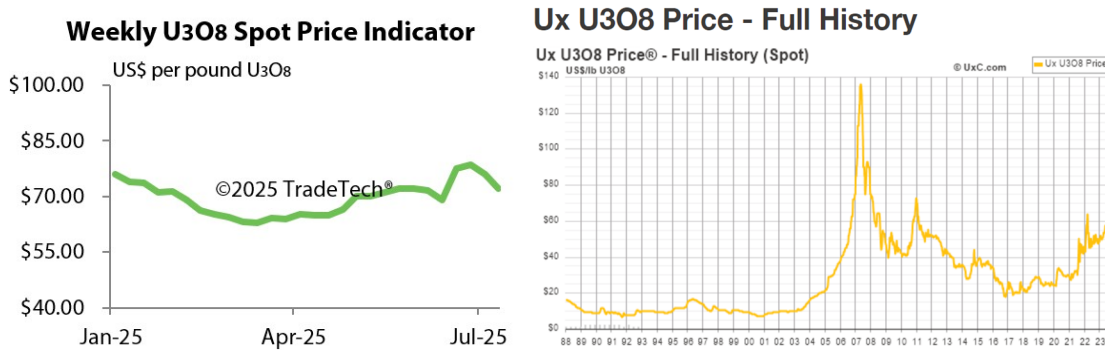


Gold and Silver Prices:



Source: Dailymetalprice.com - <https://www.dailymetalprice.com/metalprices.php>

Trade Tech's and UX's Uranium Price Indicators



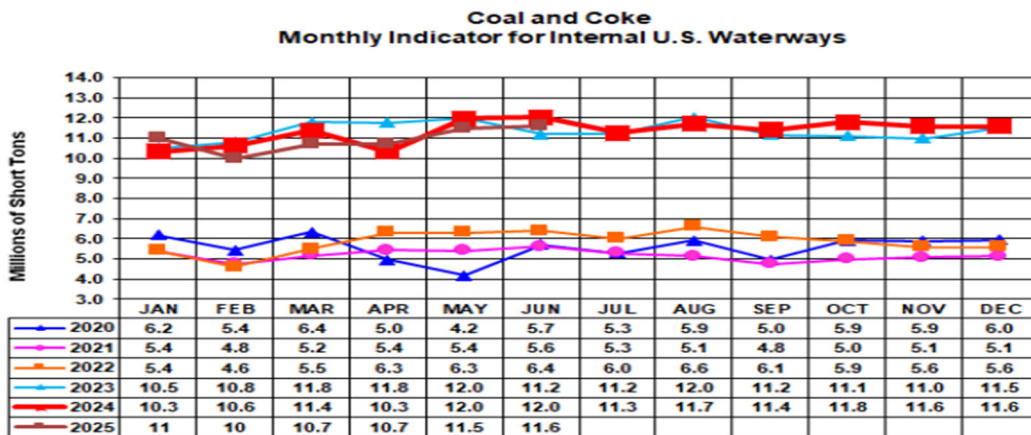
Sources: Trade Tech, Uranium Info Website – www.uranium.info ; Source: Ux Consulting Co., LLC – <http://www.uxc.com>

Coal stocks and average number of days of burn for non-lignite coal by region (electric power sector)

Zone	Coal	April 2025		April 2024		% Change of Stocks	March 2025		% Change of Stocks
		Stocks (1000 tons)	Days of Burn	Stocks (1000 tons)	Days of Burn		Stocks (1000 tons)	Days of Burn	
Northeast	Bituminous	1,180	111	2,176	267	-45.8%	1,001	117	17.9%
	Subbituminous	-	-	-	-	-	-	-	-
South	Bituminous	17,860	100	23,673	133	-24.6%	16,833	107	6.1%
	Subbituminous	5,359	78	7,120	103	-24.7%	5,459	89	-1.8%
Midwest	Bituminous	9,723	104	12,479	130	-22.1%	9,658	114	0.7%
	Subbituminous	29,573	103	36,106	132	-18.1%	29,134	119	1.5%
West	Bituminous	2,966	179	3,498	182	-15.2%	2,675	179	10.9%
	Subbituminous	30,447	135	33,963	142	-10.4%	29,137	143	4.5%
U.S. Total	Bituminous	31,728	106	41,825	139	-24.1%	30,167	114	5.2%
	Subbituminous	65,379	112	77,189	132	-15.3%	63,731	124	2.6%

Source: U.S. Energy Information Administration

Source: Energy Information Administration, Electric Monthly Update



For the Internal U.S. Waterway Monthly Indicators, estimates for the most recent month are based on lock performance management data. The estimates will be superseded by actual data as it becomes available.

Source: Waterborne Commerce Statistics Center

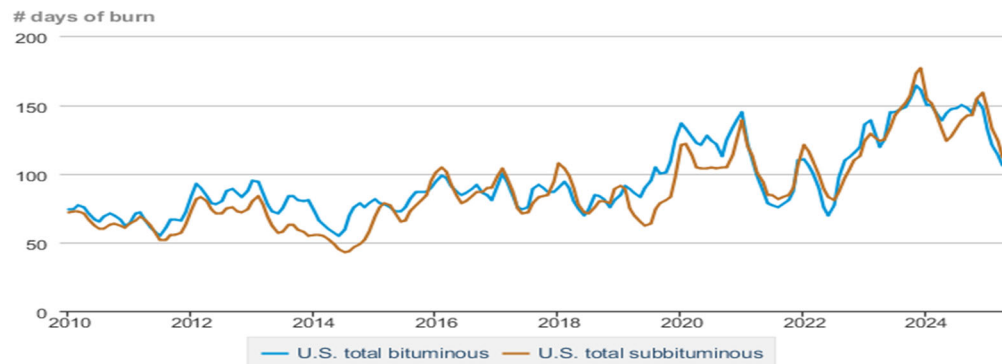
Average weekly coal commodity spot prices dollars per short ton

	Week ending					Week ago change
	06/20/25	06/27/25	07/04/25	07/11/25	07/18/25	
Central Appalachia 12,500 Btu, 1.2 SO ₂	\$79.00	\$79.00	\$79.00	\$79.00	\$79.00	\$0.00
Northern Appalachia 13,000 Btu, < 3.0 SO ₂	\$58.00	\$58.00	\$58.00	\$58.00	\$58.00	\$0.00
Illinois Basin 11,800 Btu, 5.0 SO ₂	\$47.25	\$49.00	\$49.00	\$48.25	\$48.25	\$0.00
Powder River Basin 8,800 Btu, 0.8 SO ₂	\$14.30	\$14.30	\$14.30	\$14.30	\$14.30	\$0.00

Data source: With permission, S&P Global

Source: Energy Information Administration (with permission from S&P Global), *Coal Market Report*

Days of burn by non-lignite coal rank, January 2010 - April 2025



eia Data source: U.S. Energy Information Administration

Source: Energy Information Administration, *Electricity Monthly Update Report*

Region	Temperature – heating & cooling degree days (week ending Jul 10)					
	HDDs			CDDs		
	Current total	Deviation from normal	Deviation from last year	Current total	Deviation from normal	Deviation from last year
New England	1	0	0	55	19	-14
Middle Atlantic	0	0	0	75	23	-14
E N Central	0	-1	0	75	22	16
W N Central	0	-3	-2	80	13	29
South Atlantic	0	0	0	105	11	-16
E S Central	0	0	0	103	12	-7
W S Central	0	0	0	114	-6	-9
Mountain	1	-7	-4	86	12	2
Pacific	1	-4	1	43	5	-40
United States	0	-2	0	82	12	-9

Data source: National Oceanic and Atmospheric Administration
Note: HDDs=heating degree days; CDDs=cooling degree days

Source: Energy Information Administration, *Natural Gas Weekly Update*.

U.S. Production of Selected Mineral Commodities	2024 Year to Date - 3rd Quarter	2023 Year to Date - 3rd Quarter	Percent Change
Aluminum, secondary (000 Mt.)	670.0	686.0	-2%
Cement (Mil. Mt.)	62.5	66.9	-7%
Copper (000 Mt.)	777.0	835.0	-7%
Gold (Mt.)	118.0	124.0	-5%
Gypsum (Mil. Mt.)	14.2	14.0	1%
Iron Ore (Mil. Mt.)	34.6	32.9	5%
Lead (000 Mt.)	217.0	200.0	9%
Molybdenum (000 Mt.)	25.1	25.0	0%
Palladium (Mt.)	8.4	7.5	12%
Phosphate rock (Mil. Mt.)	14.9	14.9	0%
Platinum (Mt.)	2.5	2.2	14%
Sand & gravel, construction (Mil. Mt.)	684.0	731.0	-6%
Silver (Mt.)	771.0	764.0	1%
Soda ash (Mil. Mt.)	8.7	8.1	7%
Stone, crushed (Mil. Mt.)	1,110.0	1,170.0	-5%
Zinc (000 Mt.)	564.0	544.0	4%

Source: U.S. Geological Survey, Mineral Industry Surveys. Percent change based on USGS rounded numbers. 2024 data are preliminary estimates. W - withheld, N/A - not available

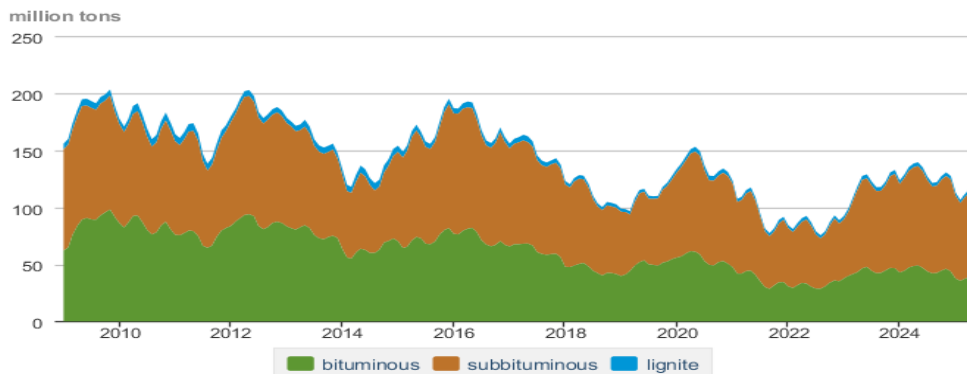
Natural gas spot prices (Henry Hub)
dollars per million British thermal units



Data source: Natural Gas Intelligence

Source: Energy Information Administration, *Natural Gas Weekly*.

Coal stocks by type, January 2009 - April 2025



Data source: U.S. Energy Information Administration

Source: Energy Information Administration, *Electricity Monthly Update*

Mining-Related Commodity Prices

Commodity Prices - Snapshot				
Metals Prices	Date	Price	Date	Price
Cobalt Spot Price (\$/lb)	7/15/25	\$15.12	7/21/25	\$15.12
Copper Spot Price (\$/lb)	7/15/25	\$5.56	7/21/25	\$15.61
Gold Spot Price (\$/ounce)	7/15/25	\$3,359.50	7/21/25	\$3,362.60
Lead Spot Price (\$/lb)	7/15/25	\$0.90	7/21/25	\$0.91
Lithium Spot Price (\$/kg)	7/15/25	\$9.04	7/21/25	\$9.47
Molybdenum Spot Price (\$/kg)	7/15/25	\$68.29	7/21/25	\$66.21
Nickel Spot Price (\$/lb)	7/15/25	\$6.89	7/21/25	\$7.03
Silver Spot Price (\$/ounce)	7/15/25	\$38.26	7/21/25	\$38.47
Steel HRC Price (\$/mt)	7/15/25	\$880.81	7/21/25	\$872.73
Steel Rebar Price (\$/mt)	7/15/25	\$426.75	7/21/25	\$442.31
Zinc Spot Price (\$/lb)	7/15/25	\$1.22	7/21/25	\$1.29
Energy Prices	Date	Price	Date	Price
Coal Price - Austr. Prem. Coking Coal Futures (\$/mt)	7/15/25	\$177.50	7/21/25	\$190.00
Coal Spot Price - Central Appalachian (\$/st)	7/11/25	\$79.00	7/18/25	\$79.00
Coal Spot Price - Newcastle futures (\$/mt)	7/15/25	\$67.57	7/21/25	\$109.80
Coal Spot Price - Rotterdam futures (\$/mt)	7/14/25	\$104.50	7/21/25	\$104.75
Natural Gas Spot Price - Henry Hub (\$/mmbtu)	7/8/25	\$3.08	7/16/25	\$3.43
Uranium Spot Price (\$/lb)	7/15/25	\$72.30	7/21/25	\$71.25

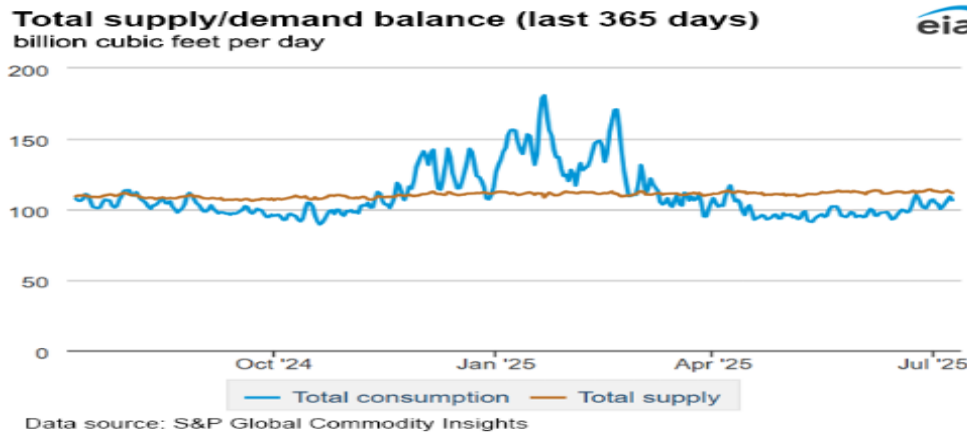
Sources: publicly available data from eia.gov, dailymetalprice.com, tradingeconomics.com, sgxgroup.com, investing.com

EIA Working Natural Gas Underground Storage

Region	Stocks billion cubic feet (Bcf)		
	2025-07-11	2025-07-04	change
East	628	616	12
Midwest	730	710	20
Mountain	235	231	4
Pacific	295	291	4
South Central	1,164	1,158	6
Total	3,052	3,006	46

Data source: U.S. Energy Information Administration Form EIA-912, *Weekly Underground Natural Gas Storage Report*
 Note: Totals may not equal sum of components because of independent rounding.

Source: Energy Information Administration, *Natural Gas Weekly Update*



Source: Energy Information Administration, *Natural Gas Weekly Update*

USGS Cobalt – U.S. Trade, Reported Stocks and Listed Prices

Cobalt - April 2025	Apr-25	Year to Date
U.S. Imports for Consumption - Metals (mt)	1,280	4,070
U.S. Exports of Cobalt Materials - Cobalt Content (mt)	383	1,570
Reported LME Stocks of Cobalt Metal (mt)	140	-
Listed Prices by Type (\$/lb): US Spot & LME Cash Avg.	21.25	15.01

Source: USGS, Mineral Industry Survey, Cobalt in March 2025, July 2025

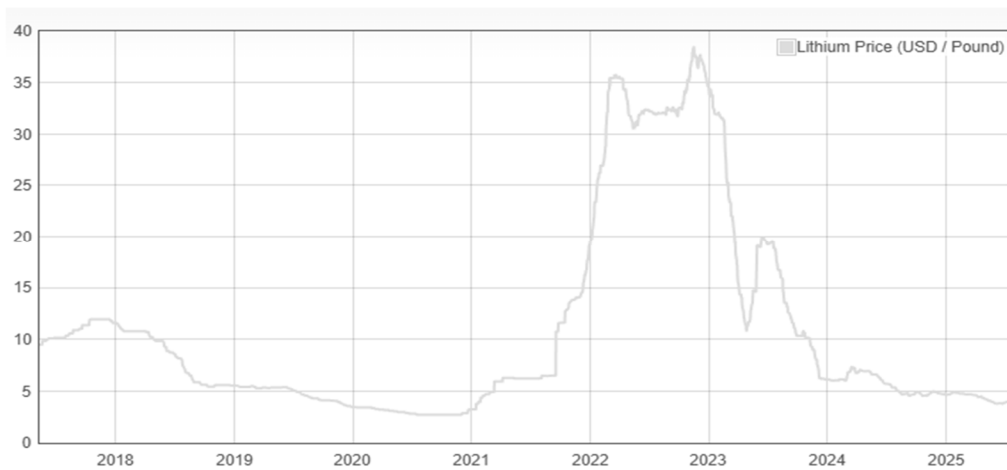
Cobalt and Lithium Prices

Cobalt Prices (US\$/pound):



Source: Dailymetalprice.com - <https://www.dailymetalprice.com/metalpricecharts.php?c=co&u=lb&d=0>

Lithium Prices (US\$/pound):



Source: Dailymetalprice.com - <https://www.dailymetalprice.com/metalpricecharts.php>